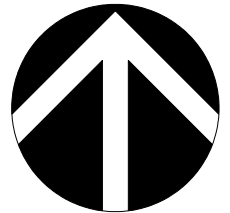



NOTES:

- 1. LOTS P-3 AND P-12 ARE INTENDED TO BE PARKING STRUCTURES AND WILL NOT REQUIRE SANITARY SEWER OR WATER SERVICES.
- 2. LOT P-8 IS THE EXISTING PSC BUILDING AND IS CURRENTLY SERVED BY SANITARY SEWER AND WATER SERVICES.
- 3. PARALLEL STORM SEWERS ARE REQUIRED TO SEPARATE OFFSITE PASS THRU WATER AND CLEAN ROOFTOP RUNOFF FROM CONTAMINATED PARKING LOT AND ROADWAY RUNOFF THAT REQUIRE SEDIMENT, OIL AND GREASE TREATMENT.

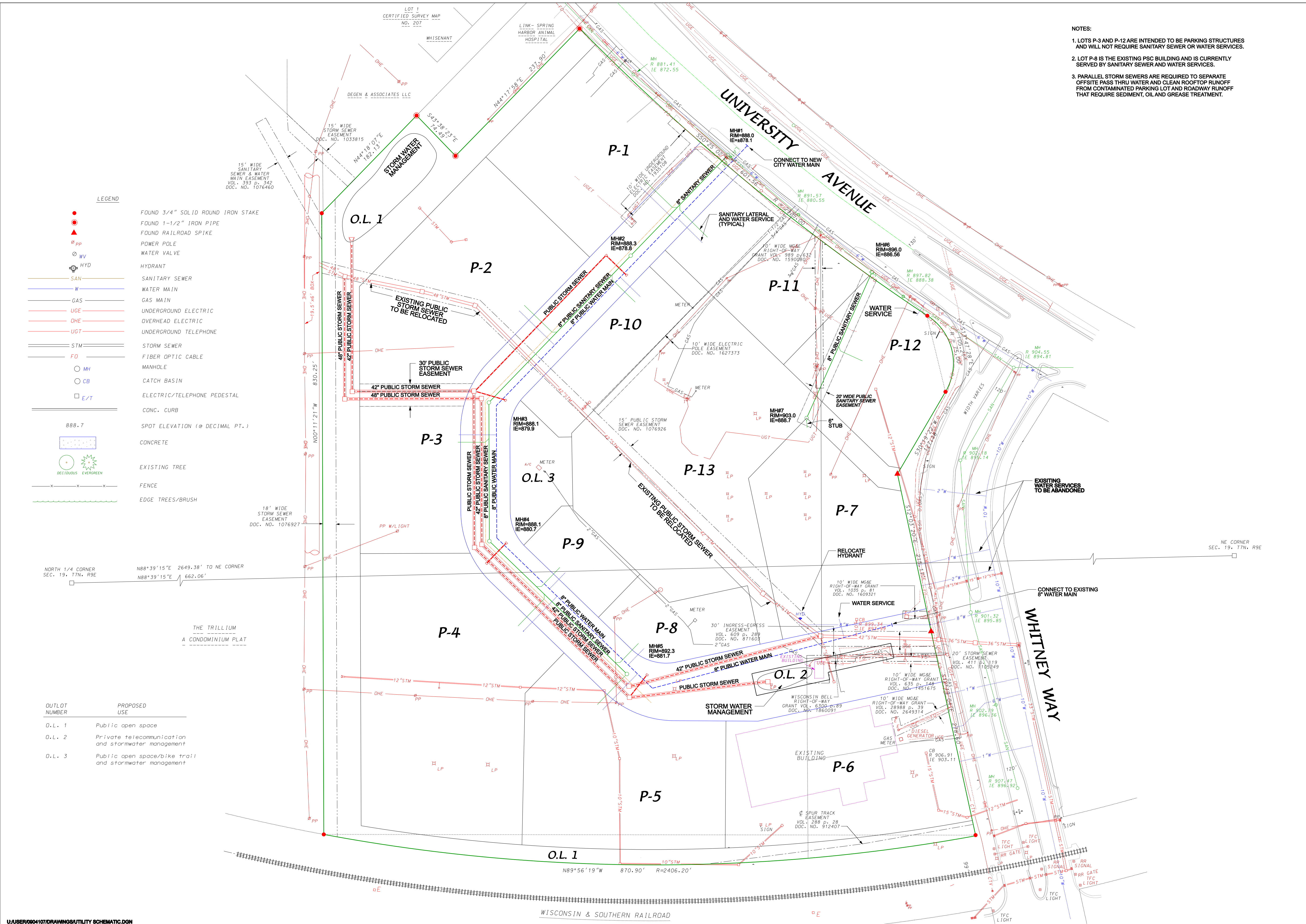
D'ONOFRIO KOTTKE AND ASSOCIATES, INC.
 7530 Weyward Way, Madison, WI 53717
 Phone: 608.833.7530 • Fax: 608.833.1089
YOUR NATURAL RESOURCE FOR LAND DEVELOPMENT

UTILITY SCHEMATIC
ERDMAN CENTER
 LOTS 1 & 2, CERTIFIED SURVEY MAP NO. 4473,
 PART OF THE SE1/4 & SW1/4 OF THE SE1/4 OF SECTION 18,
 AND PART OF THE NE1/4 AND NW1/4 OF SECTION 19, T7N, R9E
 CITY OF MADISON, DANE COUNTY, WISCONSIN


SCALE: 1" = 60'
 (PAGE SIZE: 22x34)


DATE: 07-07-10
REVISED:

DRAWN BY: KRQ
FN: 09-04-107
Sheet Number:



LEGEND

●	FOUND 3/4" SOLID ROUND IRON STAKE
▲	FOUND 1-1/2" IRON PIPE
▲	FOUND RAILROAD SPIKE
⊙	POWER POLE
⊙	WATER VALVE
⊙	HYDRANT
— SAN —	SANITARY SEWER
— W —	WATER MAIN
— GAS —	GAS MAIN
— UGE —	UNDERGROUND ELECTRIC
— OHE —	OVERHEAD ELECTRIC
— UGT —	UNDERGROUND TELEPHONE
— STM —	STORM SEWER
— FO —	FIBER OPTIC CABLE
○	MANHOLE
○	CATCH BASIN
□	ELECTRIC/TELEPHONE PEDESTAL
—	CONC. CURB
888.7	SPOT ELEVATION (@ DECIMAL PT.)
■	CONCRETE
●	EXISTING TREE
—	FENCE
—	EDGE TREES/BRUSH

18" WIDE STORM SEWER EASEMENT DOC. NO. 1076927	830.25'	830.25'	NOO*11'21"W
N80°39'15"E 2649.38' TO NE CORNER			N88°39'15"E 662.06'

OUTLOT NUMBER	PROPOSED USE
O.L. 1	Public open space
O.L. 2	Private telecommunication and stormwater management
O.L. 3	Public open space/bike trail and stormwater management