

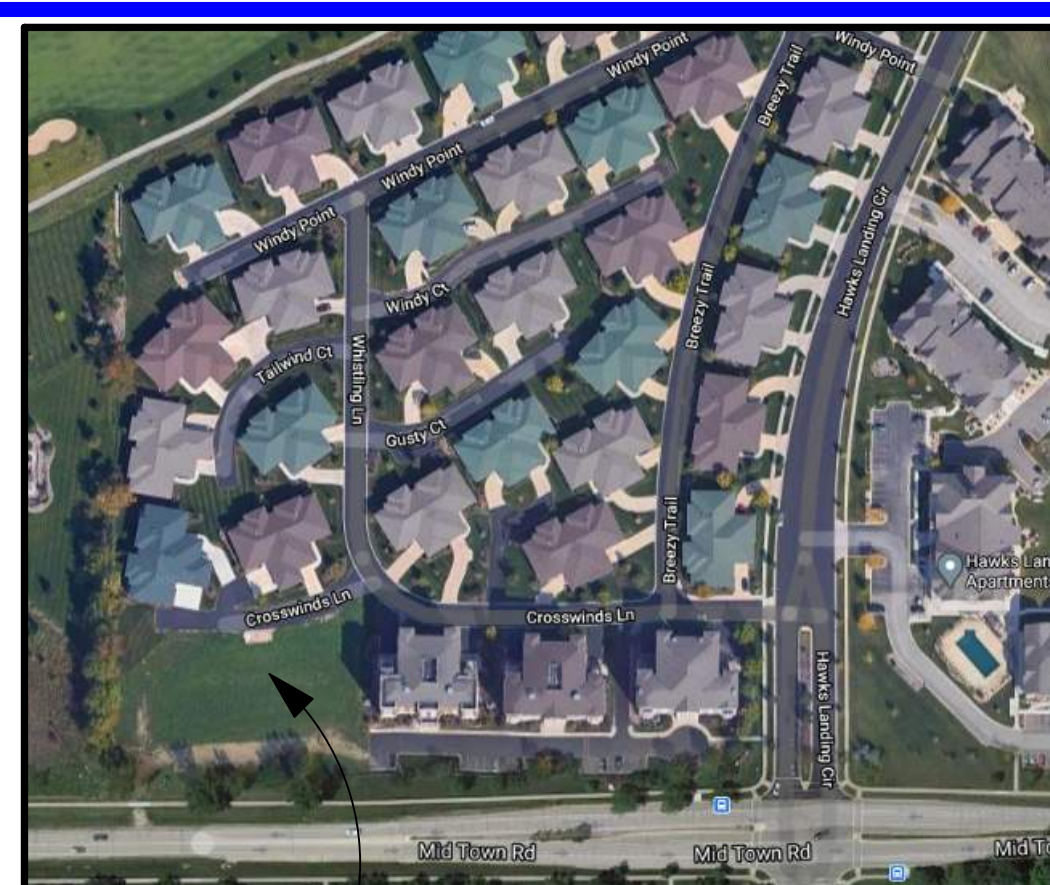
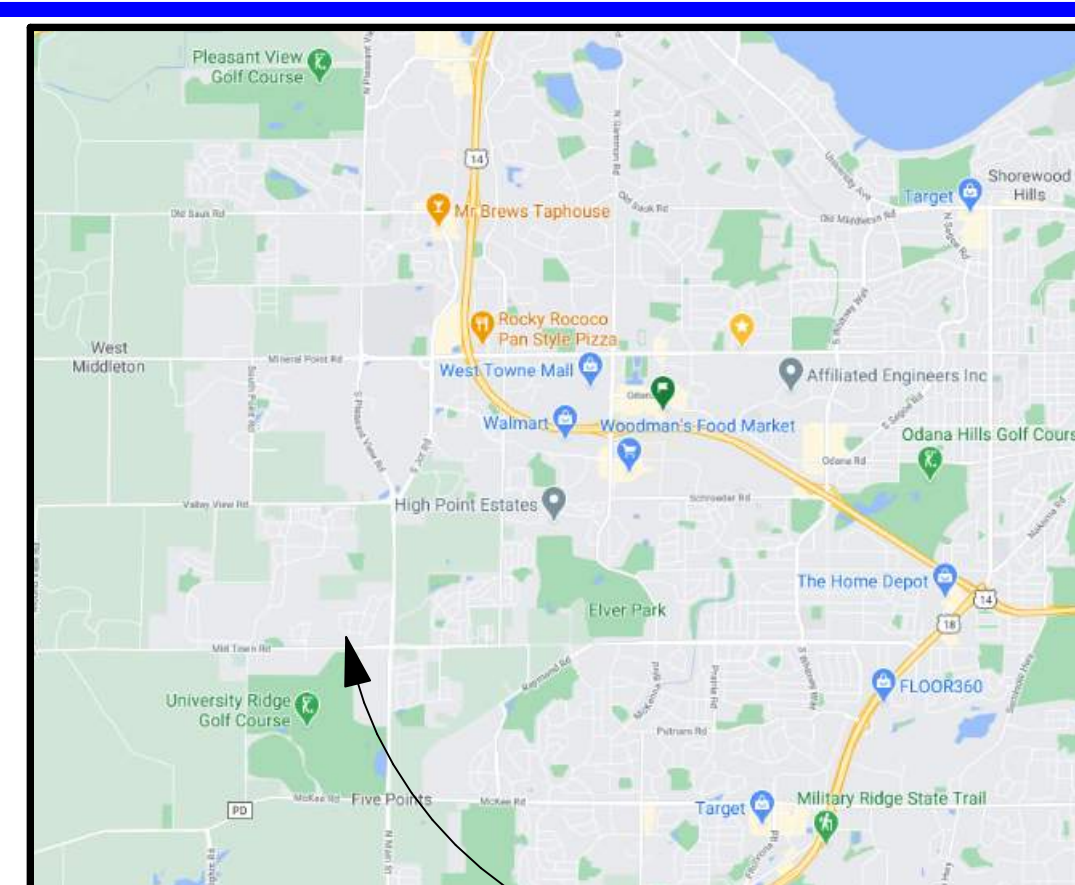
# CROSSWINDS @ HAWKS LANDING

## BUILDINGS 4 & 5 - 16 CONDOMINIUM UNITS EACH BLDG

9237 - 9249 CROSSWINDS LANE  
MADISON, WISCONSIN 53593



### PROJECT LOCATION



VICINITY LOCATION

### PROJECT DIRECTORY

<b>GORMAN &amp; COMPANY, LLC.</b> 200 NORTH MAIN STREET OREGON, WI 53575 VOICE (608) 835-3900	<b>DEVELOPER</b>	<b>CIVIL ENGINEER</b> RONALD R. KLAAS, P.E. D'ONOFRIO KOTTKE AND ASSOCIATED 7530 WESTWARD WAY MADISON, WISCONSIN 53717 VOICE (608) 833-7530	<b>CIVIL</b>
<b>GORMAN ARCHITECTURAL, LLC</b> PATRICK PATRELLO JR. 200 NORTH MAIN STREET OREGON, WI 53575 VOICE (608) 835-6339 FAX (608) 835-3344	<b>ARCHITECT</b>	<b>GORMAN &amp; COMPANY GENERAL CONTRACTORS, LLC</b> RON SIWIGGUM 200 NORTH MAIN STREET OREGON, WI 53575 VOICE (608) 835-5573 FAX (608) 835-5578	<b>CONTRACTOR</b>

### LAND USE TABLE

SITE AREA	54984 SQ FT
BLDG FOOTPRINT SF	7890 SF X 2 = 15780 SQ FT
LOT COVERAGE	15780 SQ FT / 54984 SQ FT = 28.7%
BUILDING GROSS SF	47263 SQ FT EACH
<b>PROPOSED 32 DWELLING UNITS</b>	
(16) 2 BEDROOM + DEN UNITS	1705 SQ FT EACH
(16) 3 BEDROOM UNITS	1945 SQ FT EACH
USEABLE OPEN SPACE AREA	10250 SQ FT
LANDSCAPE AREA	15300 SQ FT
PAVED AREA	13650 SQ FT
PARKING PROPOSED	13 SURFACE & 32 COVERED
BIKE PARKING	32 (LABELED AS STORAGE CLOSETS)

### SET ISSUE

#### APPROVED FOR:

- PLANNING APPROVAL
- PERMIT APPLICATION
- BIDDING
- CONSTRUCTION

**CROSSWINDS @ HAWK'S LANDING**  
BUILDINGS 4 & 5 - 16 CONDOMINIUM UNITS EACH BLDG  
9237 - 9249 CROSSWINDS LANES  
MADISON, WISCONSIN 53593

<b>Issue Dates:</b>	
<b>DATE</b>	<b>DESCRIPTION</b>
2021.01.06	ALTERATION TO PD
2021.02.08	ZONING REVIEW COMMENTS

<b>Project No.</b>	Project Number
<b>Plot Date:</b>	2/9/2021 8:31:08 AM
<b>Drawn by:</b>	crd
<b>Checked by:</b>	pp
<b>Approved by:</b>	Conceptual
<b>Sheet Title</b>	COVER SHEET

Sheet No.  
**G101**

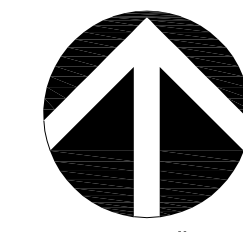
**CROSSWINDS @ HAWKS LANDING**  
BUILDINGS 4 & 5 - 16 CONDOMINIUM UNITS EACH BLDG  
9237-9249 CROSSWINDS LANE  
MADISON, WISCONSIN 53593

Issue Dates:	
DATE	DESCRIPTION

Project No.	
Plot Date:	2021/01/06
Drawn by:	DKA
Checked by:	
Approved by:	

Sheet Title  
**GRADING & EROSION  
CONTROL PLAN**

Sheet No.  
**C-101**



SCALE: 1" = 30'

**CROSSWINDS @ HAWK'S LANDING**  
BUILDINGS 4 & 5 - 16 CONDOMINIUM UNITS EACH BLDG  
9237 - 9249 CROSSWINDS LANES  
MADISON, WISCONSIN 53593

Issue Dates:

DATE	DESCRIPTION
2021.01.06	ALTERATION TO PD

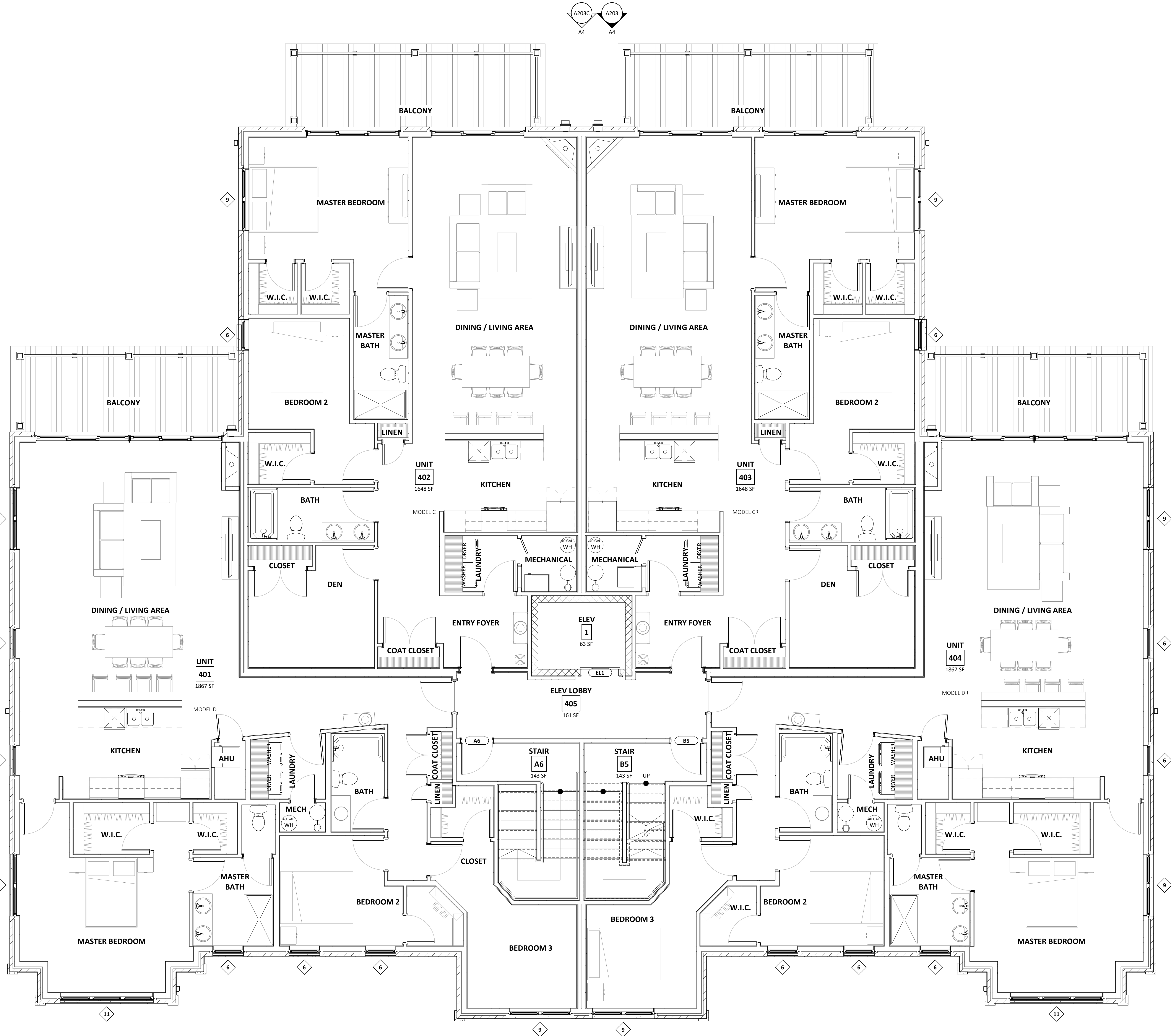
Project No.	Project Number
Plot Date:	2/9/2021 8:28:01 AM
Drawn by:	crd
Checked by:	pp
Approved by:	
Conceptual	

Sheet Title  
FOURTH FLOOR OVERALL PLAN

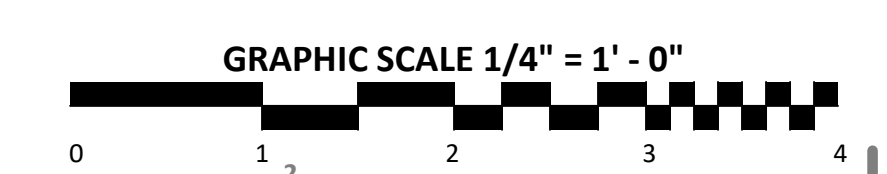
Sheet No.  
**A141**

**GENERAL PLAN NOTES**

- DIMENSIONAL WOOD FRAMING - ALL EXTERIOR DIMENSIONS ARE FROM FACE OF SHEATHING TO FACE OF SHEATHING.
- DIMENSIONAL WOOD FRAMING - OPENINGS ARE DIMENSIONED TO CENTER OF ROUGH OPENINGS - VERIFY RO'S PRIOR TO FRAMING.
- DIMENSIONAL WOOD FRAMING - FLOORS HEIGHTS ARE DIMENSIONED TO ROUGH FLOOR ELEVATION (TOP OF FLOOR SHEATHING).
- DIMENSIONAL WOOD FRAMING DEMISING (PARTY) WALLS ON THIS PLAN ARE DIMENSIONED TO CENTERLINE OF WALL U.N.O.
- STRUCTURAL MASONRY CONSTRUCTION - ALL EXTERIOR DIMENSIONS ARE FROM FACE OF MASONRY TO FACE OF MASONRY.
- STRUCTURAL MASONRY CONSTRUCTION - OPENINGS ARE DIMENSIONED AS MASONRY OPENINGS (MO'S) - VERIFY RO'S PRIOR TO MASONRY CONSTRUCTION.
- SEE STRUCTURAL SHEETS FOR DIMENSIONS OF FOUNDATION WALLS & PRECAST PLANK
- SEE STRUCTURAL SHEETS FOR STRUCTURAL ELEMENTS & ADDITIONAL INFORMATION
- SEE ENLARGED SCALE PLANS FOR 1/4" SCALE PLANS FOR UNITS & COMMON AREAS
- DOOR LOCATIONS ARE DOOR WIDTH PLUS 8 INCHES (4 INCHES EACH SIDE) TO ACCOUNT FOR TRIM U.N.O.
- SEE SHEET A601 FOR COMMON ARE DOOR SCHEDULES
- SEE SHEET A602 FOR COMMON AREA ROOM FINISH SCHEDULE



**1 FOURTH FLOOR OVERALL PLAN**  
SCALE: 1/4" = 1'-0"



Conceptual

C:\Temp\CAD\BLDG 4 v.1 (2020) \marshah\ADK5F.rvt

**CROSSWINDS @ HAWK'S LANDING**  
BUILDINGS 4 & 5 - 16 CONDOMINIUM UNITS EACH BLDG  
9237 - 9249 CROSSWINDS LANES  
MADISON, WISCONSIN 53593

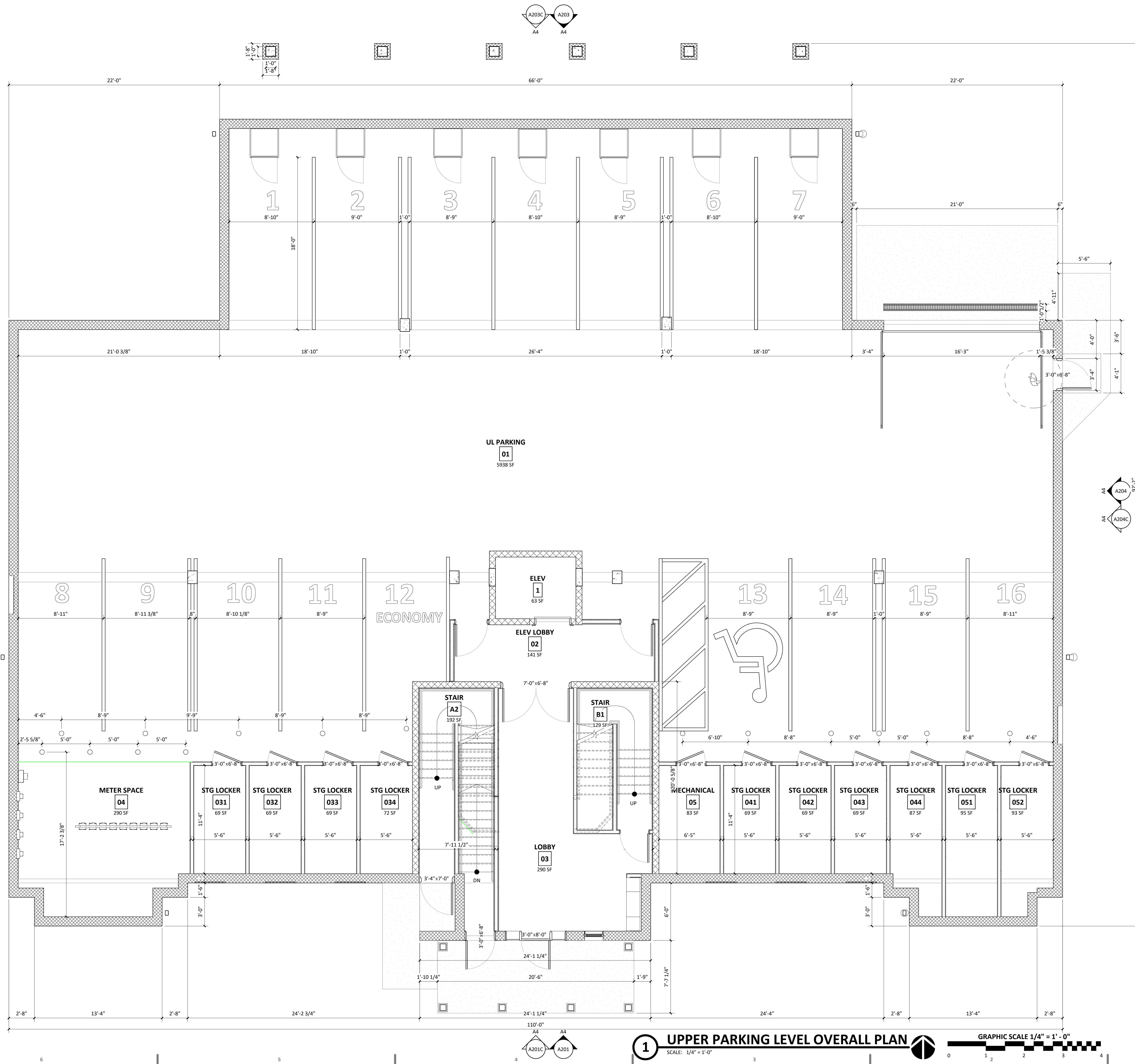
Issue Dates:

DATE	DESCRIPTION
2021.01.06	ALTERATION TO PD

Project No.	Project Number
Plot Date:	2/9/2021 8:27:51 AM
Drawn by:	crd
Checked by:	pp
Approved by:	
Conceptual	

Sheet Title  
UPPER PARKING LEVEL  
OVERALL PLAN

Sheet No.  
**A102**



**1 UPPER PARKING LEVEL OVERALL PLAN**  
SCALE: 1/4" = 1'-0"  
GRAPHIC SCALE 1/4" = 1'-0"

Conceptual

C:\TempCAD\BLDG 4 v.1 (2020) \marshhall\ADK5F.rvt

**CROSSWINDS @ HAWK'S LANDING**  
BUILDINGS 4 & 5 - 16 CONDOMINIUM UNITS EACH BLDG  
9237 - 9249 CROSSWINDS LANES  
MADISON, WISCONSIN 53593

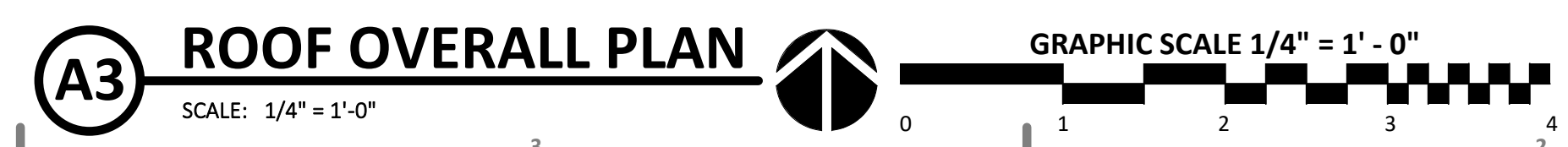
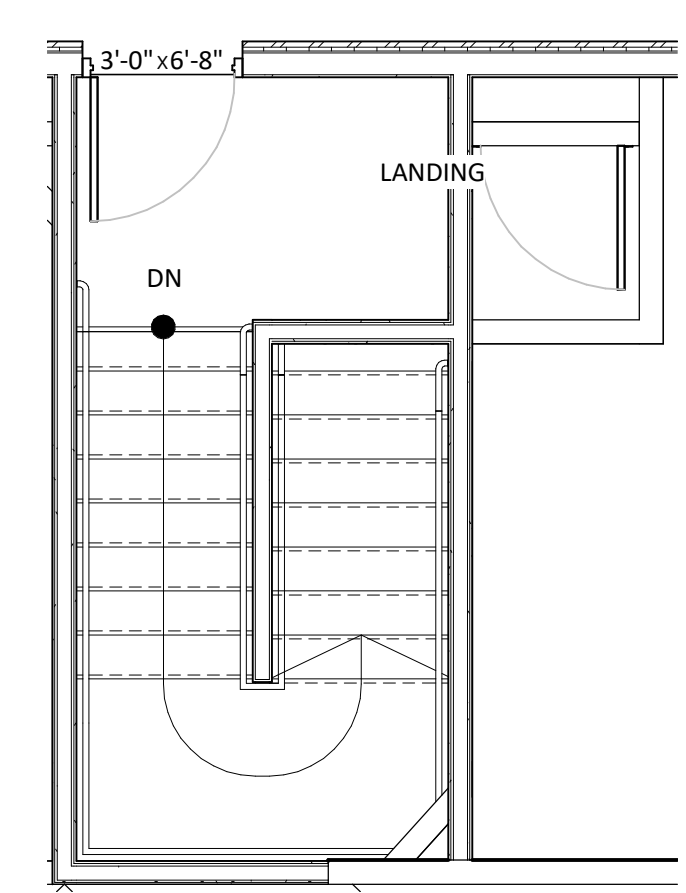
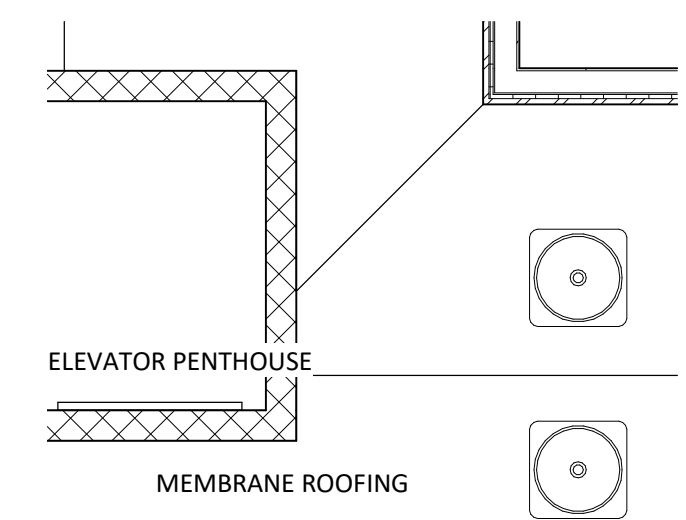
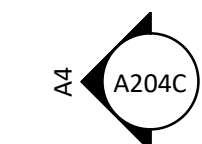
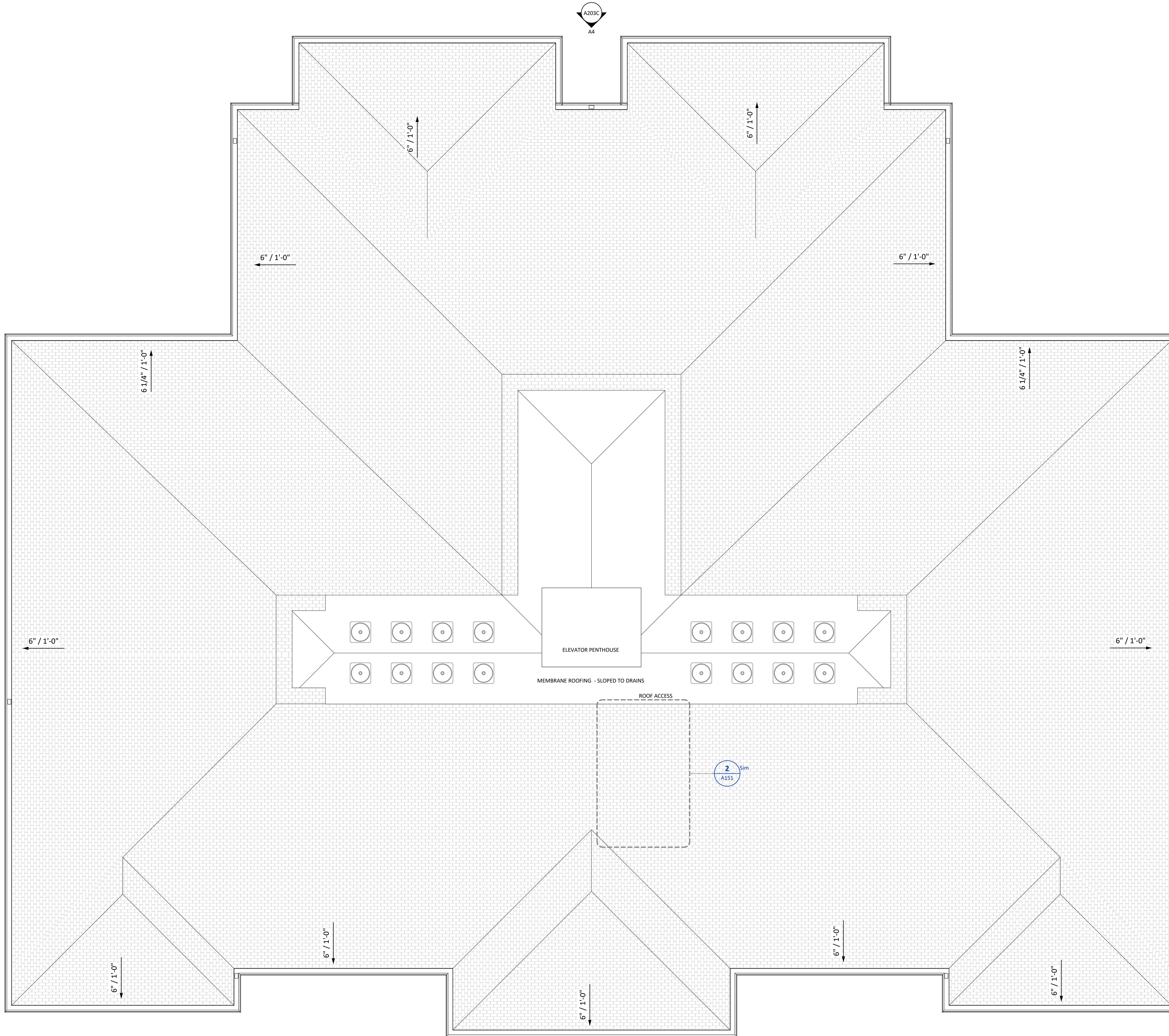
Issue Dates:

DATE	DESCRIPTION
2021.01.06	ALTERATION TO PD

Project No.	Project Number
Plot Date:	2021.01.05 08:46:32
Drawn by:	crd
Checked by:	pp
Approved by:	

Conceptual  
Sheet Title  
ROOF OVERALL PLAN

Sheet No.  
**A151**





STREETSCAPE MONTAGE - EXISTING NEXT TO PROPOSED



PROPOSED VIEW FROM MID TOWN ROAD

**CROSSWINDS @ HAWK'S LANDING**  
BUILDINGS 4 & 5 - 16 CONDOMINIUM UNITS EACH BLDG  
9237 - 9249 CROSSWINDS LANES  
MADISON, WISCONSIN 53593

Issue Dates:

DATE	DESCRIPTION
2021.02.06	ZONING REVIEW COMMENTS

Project No.	Project Number
Plot Date:	3/5/2021 11:10:23 AM
Drawn by:	jam
Checked by:	
Approved by:	
Conceptual	

Sheet Title  
RENDERING

Sheet No.  
**A205**

**EXTERIOR MATERIALS**

						
Regency Red Blend (A) BUILDING 4 COUNTYMATERIALS.COM	Coffee Blend (A) BUILDING 5 COUNTYMATERIALS.COM	<a href="https://www.stonecastproducts.com/12-inch-stone-face-prairie-stonecast">https://www.stonecastproducts.com/12-inch-stone-face-prairie-stonecast</a>	<a href="https://www.longboardproducts.com/6-channel-profile">https://www.longboardproducts.com/6-channel-profile</a>	<a href="https://woodtone.com/product/absolutecedar/">https://woodtone.com/product/absolutecedar/</a>	<a href="https://www.andersenwindows.com/windows-and-doors/series/100-series/">https://www.andersenwindows.com/windows-and-doors/series/100-series/</a>	<a href="https://www.gaf.com/en-us/roofing-products/residential-roofing-products/shingles?Action=GetGrid&amp;ZipCode=53575">https://www.gaf.com/en-us/roofing-products/residential-roofing-products/shingles?Action=GetGrid&amp;ZipCode=53575</a>



**CROSSWINDS @ HAWK'S LANDING**  
BUILDINGS 4 & 5 - 16 CONDOMINIUM UNITS EACH BLDG  
9237 - 9249 CROSSWINDS LANES  
MADISON, WISCONSIN 53593

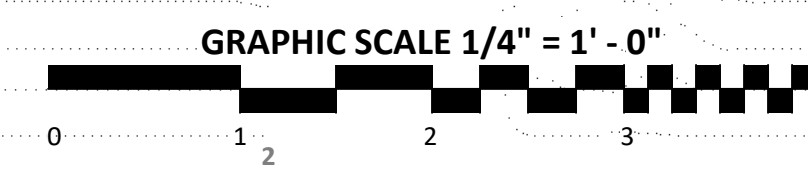
Issue Dates:

DATE	DESCRIPTION
2021.01.06	ALTERATION TO PD

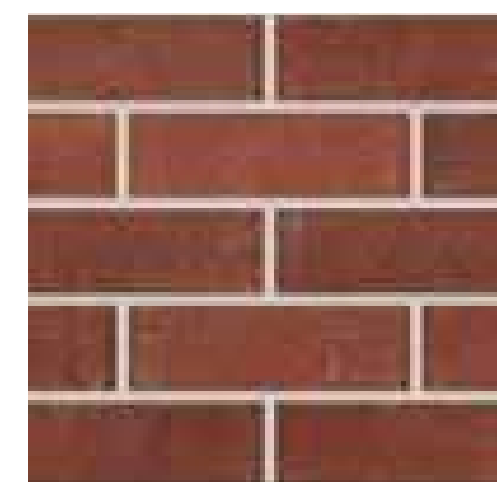
Project No.	Project Number
Plot Date:	2/9/2021 8:28:44 AM
Drawn by:	crd
Checked by:	pp
Approved by:	
Conceptual	

Sheet Title  
COLOR EXTERIOR  
ELEVATIONS

Sheet No.  
**A201C**

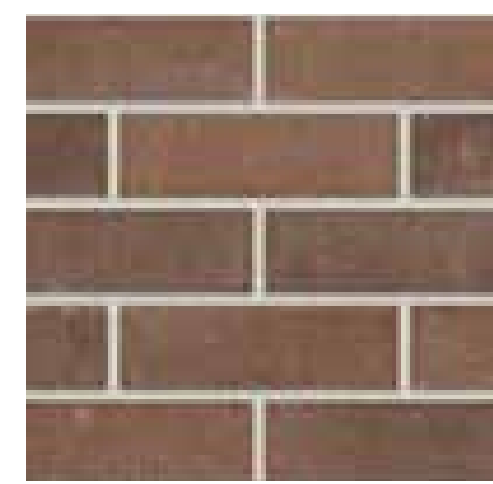


**EXTERIOR MATERIALS**



Regency Red Blend (A)

BUILDING 4  
COUNTYMATERIALS.COM



Coffee Blend (A)

BUILDING 5  
COUNTYMATERIALS.COM



<https://www.stonecastproducts.com/>  
12" STONE FACE - PRAIRIE  
STONECAST



VERTICAL WOOD SIDING  
LONG BOARD SIDING TONGUE AND GROOVE

<https://www.longboardproducts.com/6-channel-profile>



CEDAR POSTS  
WOODTONE REAL CEDAR

<https://woodtone.com/product/absolutecedar/>



DARK BRONZE WINDOWS

<https://www.andersenwindows.com/windows-and-doors/series/100-series/>



ARCHITECTURAL DIMENSIONAL ASPHALT SHINGLES  
GAF TIMBERLINE CHARCOAL COLOR

<https://www.gaf.com/en-us/roofing-products/residential-roofing-products/shingles?Action=GetGrid&ZipCode=53575>



**CROSSWINDS @ HAWK'S LANDING**  
BUILDINGS 4 & 5 - 16 CONDOMINIUM UNITS EACH BLDG  
9237 - 9249 CROSSWINDS LANES  
MADISON, WISCONSIN 53593

Issue Dates:

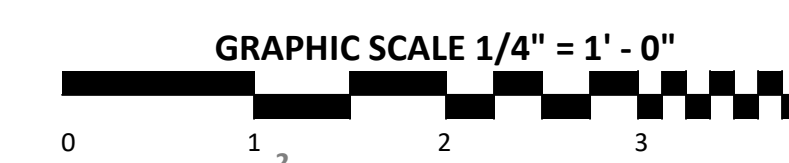
DATE	DESCRIPTION
2021.01.06	ALTERATION TO PD

Project No.	Project Number
Plot Date:	2/9/2021 8:30:15 AM
Drawn by:	crd
Checked by:	pp
Approved by:	Conceptual

Sheet Title  
COLOR EXTERIOR  
ELEVATIONS

Sheet No.  
**A203C**

**A4** COLORIZED NORTH ELEVATION  
SCALE: 1/4" = 1'-0"





**EXTERIOR MATERIALS**

						
Regency Red Blend (A) BUILDING 4 COUNTYMATERIALS.COM	Coffee Blend (A) BUILDING 5 COUNTYMATERIALS.COM	<a href="https://www.stonecastproducts.com/12-inch-stone-face-prairie-stonecast">https://www.stonecastproducts.com/12" STONE FACE - PRAIRIE STONECAST</a>	<a href="https://www.longboardproducts.com/6-channel-profile">https://www.longboardproducts.com/6-channel-profile</a>	<a href="https://woodtone.com/product/absolutecedar/">https://woodtone.com/product/absolutecedar/</a>	<a href="https://www.andersenwindows.com/windows-and-doors/series/100-series/">https://www.andersenwindows.com/windows-and-doors/series/100-series/</a>	<a href="https://www.gaf.com/en-us/roofing-products/residential-roofing-products/shingles?Action=GetGrid&amp;ZipCode=53575">https://www.gaf.com/en-us/roofing-products/residential-roofing-products/shingles?Action=GetGrid&amp;ZipCode=53575</a>



**CROSSWINDS @ HAWK'S LANDING**  
BUILDINGS 4 & 5 - 16 CONDOMINIUM UNITS EACH BLDG  
9237 - 9249 CROSSWINDS LANES  
MADISON, WISCONSIN 53593

Issue Dates:

DATE	DESCRIPTION
2021.01.06	ALTERATION TO PD

Project No.	Project Number
Plot Date:	2/9/2021 8:29:26 AM
Drawn by:	crd
Checked by:	pp
Approved by:	Conceptual

Sheet Title  
COLOR EXTERIOR  
ELEVATIONS

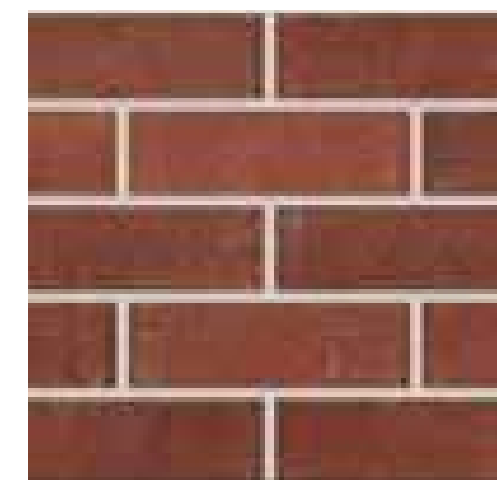
Sheet No.  
**A202C**

**A4** COLORIZED WEST ELEVATION  
SCALE: 1/4" = 1'-0"



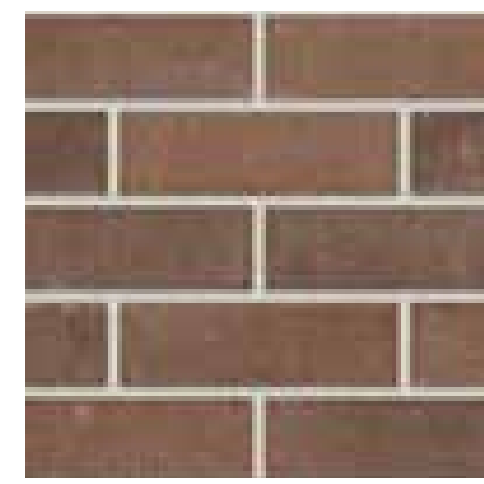
C:\TempCAD\BLDG 4 v.1 (2020) \marshhall\ADKSF.rvt

**EXTERIOR MATERIALS**



Regency Red Blend (A)

BUILDING 4  
COUNTYMATERIALS.COM



Coffee Blend (A)

BUILDING 5  
COUNTYMATERIALS.COM



<https://www.stonecastproducts.com/>  
12" STONE FACE - PRAIRIE  
STONECAST



VERTICAL WOOD SIDING  
LONG BOARD SIDING TONGUE AND GROOVE

<https://www.longboardproducts.com/6-channel-profile>



CEDAR POSTS  
WOODTONE REAL CEDAR

<https://woodtone.com/product/absolutecedar/>



DARK BRONZE WINDOWS

<https://www.andersenwindows.com/windows-and-doors/series/100-series/>



ARCHITECTURAL DIMENSIONAL ASPHALT SHINGLES  
GAF TIMBERLINE CHARCOAL COLOR

<https://www.gaf.com/en-us/roofing-products/residential-roofing-products/shingles?Action=GetGrid&ZipCode=53575>



**CROSSWINDS @ HAWK'S LANDING**  
BUILDINGS 4 & 5 - 16 CONDOMINIUM UNITS EACH BLDG  
9237 - 9249 CROSSWINDS LANES  
MADISON, WISCONSIN 53593

Issue Dates:

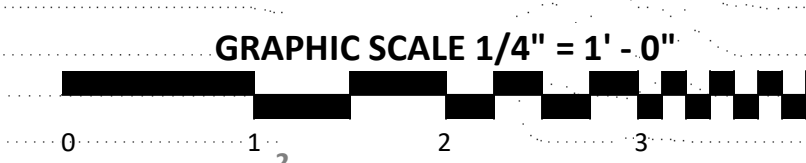
DATE	DESCRIPTION
2021.01.06	ALTERATION TO PD

Project No.	Project Number
Plot Date:	2/9/2021 8:30:51 AM
Drawn by:	crd
Checked by:	pp
Approved by:	Conceptual

Sheet Title  
COLOR EXTERIOR  
ELEVATIONS

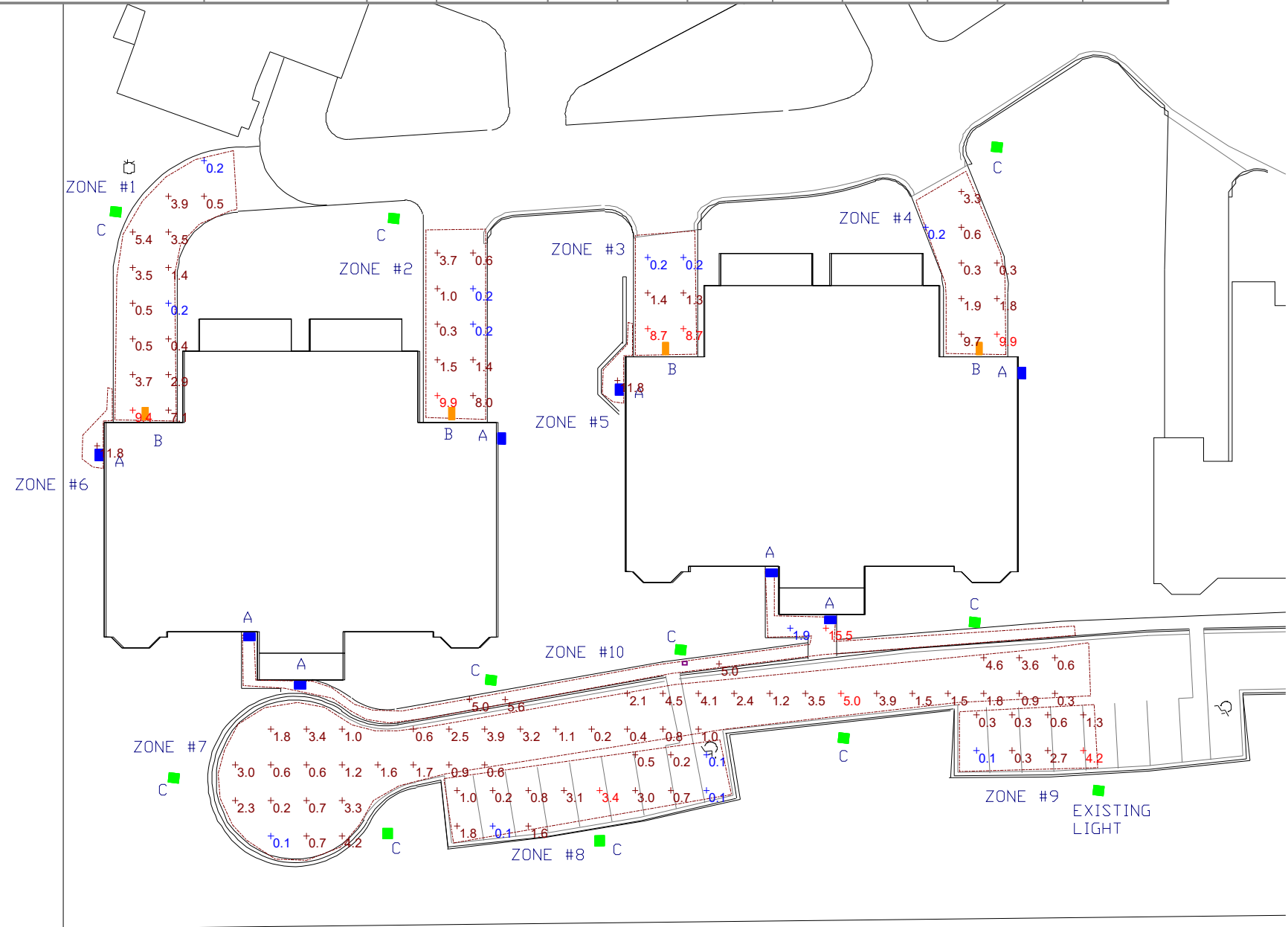
Sheet No.  
**A204C**

**A4** COLORIZED EAST ELEVATION  
SCALE: 1/4" = 1'-0"



Symbol	Label	Image	QTY	Manufacturer	Catalog Number	Description	Lamp	Number Lamps	Filename	Lumens per Lamp	Lumen Multiplier	LLF	Wattage	Efficiency	Distribution	Polar Plot	Notes
	A		8	Seagull Lighting	8301493S-12	LED Exterior lighting sconce.	LED	1	WST_LED_P2_27K_VF_MVOLT_VG.ies	2894	1	0.87	26	100%	TYPE III, VERY SHORT, BUG RATING: B1 - U0 - G1		
	B		4	-	WPFC-50K80P-S3	80W Full cutoff LED wall pack with photocell.	80W LED	1	TWF1_2_42TRT.ies	9600	1	0.87	80	51%	TYPE II, VERY SHORT, FULL CUTOFF, BUG RATING: B1 - U0 - G1		
	C		11	Nuvo Lighting	Model: 60/3456	Briton 14" tall outdoor single head post light with glass panel shades.	60W Max. bulb.	1	AVPCL2_P35_X_27K_R5_CAY.ies	6720	1	0.87	60	100%	TYPE VS, BUG RATING: B3 - U0 - G1		

Description	Symbol	Avg	Max	Min	Max/Min	Avg/Min
Calc Zone #1	+	2.9 fc	9.4 fc	0.2 fc	47.0:1	14.5:1
Calc Zone #2	+	2.7 fc	9.9 fc	0.2 fc	49.5:1	13.5:1
Calc Zone #3	+	3.4 fc	8.7 fc	0.2 fc	43.5:1	17.0:1
Calc Zone #4	+	3.1 fc	9.9 fc	0.2 fc	49.5:1	15.5:1
Calc Zone #5	+	11.8 fc	11.8 fc	11.8 fc	1.0:1	1.0:1
Calc Zone #6	+	11.8 fc	11.8 fc	11.8 fc	1.0:1	1.0:1
Calc Zone #7	+	1.9 fc	5.0 fc	0.1 fc	50.0:1	19.0:1
Calc Zone #8	+	1.2 fc	3.4 fc	0.1 fc	34.0:1	12.0:1
Calc Zone #9	+	1.2 fc	4.2 fc	0.1 fc	42.0:1	12.0:1
Calc Zone #10	+	6.6 fc	15.5 fc	1.9 fc	8.2:1	3.5:1



**CROSSWINDS @ HAWK'S LANDING**  
**Buildings 4&5**  
**9237 - 9249 CrossWinds Lane**  
**Madison, WI 53593**

**Designer**  
 CL  
**Date**  
 02/02/2021  
**Scale**  
 Not to Scale  
**Revision No.**

**Summary**