

**ADDITIONAL BASALT LANE
STORMSEWER SAS
CONSTRUCTION LOCATION**

**PROJECT LOCATION
POND SEDIMENT REMOVAL &
CATCH BASIN CONSTRUCTION**

PROJECT LOCATION

14915

PRAIRIE HILLS DETENTION BASIN IMPROVEMENTS

EXHIBIT 1

NORTH OF MCKEE ROAD/WEST OF DORCHESTER WAY - 3147 DORCHESTER WAY - MADISON, WI



REPLACE EX. INLET WITH
6'X6' CATCH BASIN WITH SUMP AND
TYPE 1 TERRACE INLET

REPLACE EX. INLET WITH
6'X6' CATCH BASIN WITH SUMP



REMOVE SEDIMENT IN WEST & EAST
DETENTION CELL UNDER EXISTING
MAINTENANCE PERMIT

APPROXIMATE PROPOSED
MAINTENANCE ACCESS
LOCATION

CONSTRUCT 6'X6' CATCH BASIN WITH
SUMP OVER EXISTING STORMSEWER

AERIAL LAYOUT MAP

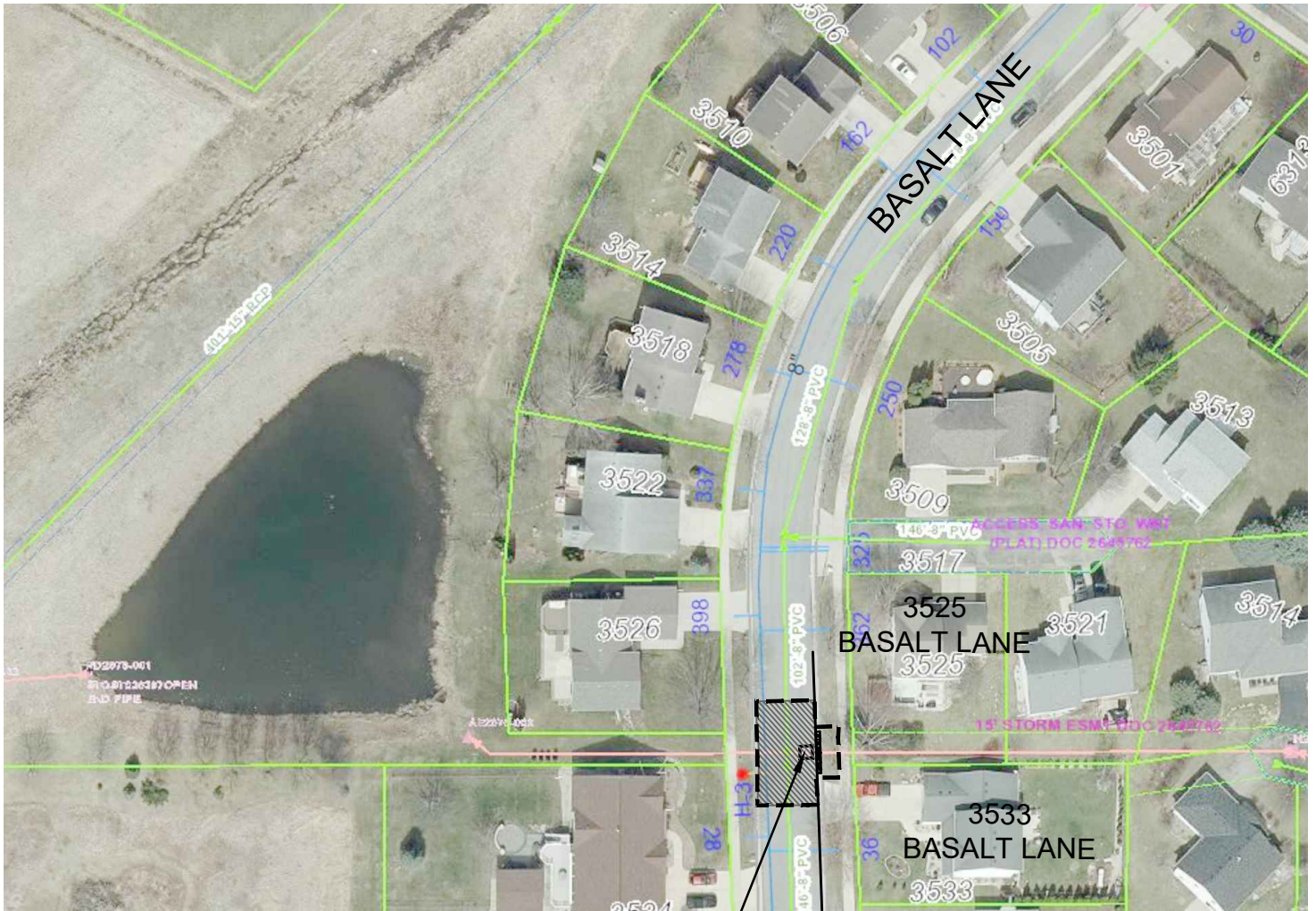
14915

PRAIRIE HILLS DETENTION BASIN IMPROVEMENTS

EXHIBIT 2

NORTH OF MCKEE ROAD/WEST OF DORCHESTER WAY - 3147 DORCHESTER WAY - MADISON, WI

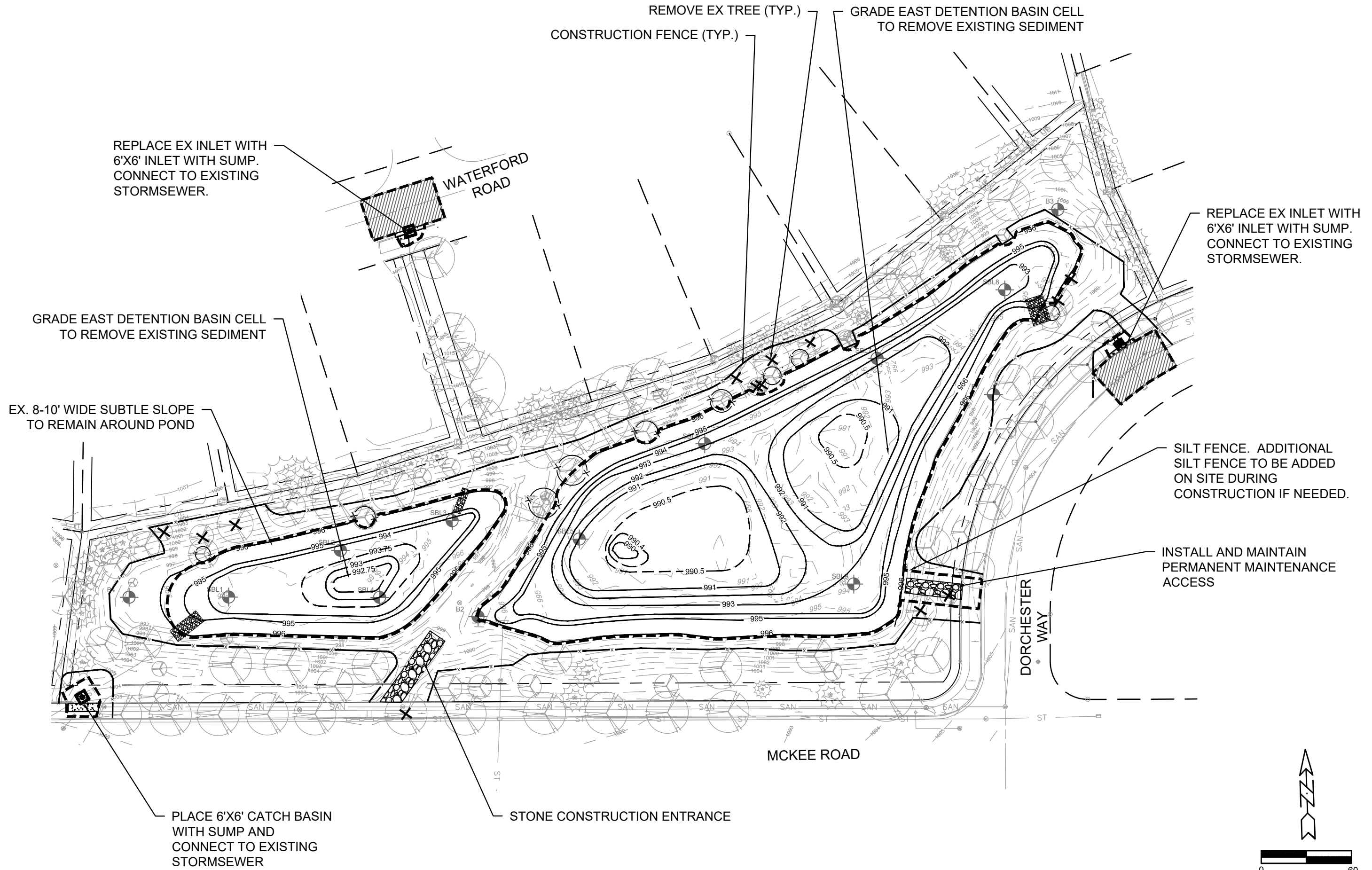




CONSTRUCT 6'X6' CATCH BASIN WITH SUMP OVER EXISTING STORMSEWER

	AERIAL LAYOUT MAP
14915	PRAIRIE HILLS DETENTION BASIN IMPROVEMENTS (BASALT LANE STRUCTURE)
EXHIBIT 3	BASALT LANE - BETWEEN 3525 & 3533 BASALT LN - MADISON, WI





MARK	REVISION	DATE	BY
14915		Date: 6/8/2022 10:38 AM	GPI

14915
 3147 DORCHESTER WAY
 CONTRACT NO: 9372

GRADING AND EROSION CONTROL PLAN
 PRAIRIE HILLS DETENTION BASIN IMPROVEMENTS
 M:\DESIGN\Projects\11086\CAD\Sewers\11086 East Town Detention Basin.dwg



14915

EXHIBIT 4