

Land Use and UDC Application Set

East Towne FSU, Madison, WI

East Town FSU

03601



Perspective View - Northwest

Total Square Footage

Footprint 5035 s.f.

Seat Count

Interior 144

Exterior 22

East Washington Ave Glazing

Total Glazed Area 40%

Etched Glazing 9.5%

Glazed Width 62.3%

05/13/2015

East Towne FSU, Madison, WI - Store #03601





Perspective View - Northeast

05/13/2015

East Towne FSU, Madison, WI - Store #03601





Perspective View - Southwest

05/13/2015

East Towne FSU, Madison, WI - Store #03601





Perspective View - Southeast

05/13/2015

East Towne FSU, Madison, WI - Store #03601





View from Service Drive Looking East

05/13/2015

East Towne FSU, Madison, WI - Store #03601





View from Service Drive Looking West

05/13/2015

East Towne FSU, Madison, WI - Store #03601





Elevation - North

05/13/2015

East Towne FSU, Madison, WI - Store #03601

Exterior Elevations





Elevation - West

05/13/2015

East Towne FSU, Madison, WI - Store #03601

Exterior Elevations





Elevation - South

05/13/2015

East Towne FSU, Madison, WI - Store #03601

Exterior Elevations

See Finish Schedule for more information





- T/PLATE 22'-6"
- T/PLATE 20'-10 1/4"
- T/PLATE 19'-2 1/2"
- T/PLATE 15'-5 1/2"
- T/WINDOW 11'-0"
- B/CANOPY 9'-0"
- FINISH SLAB 0'-0"

Elevation - East

05/13/2015

East Towne FSU, Madison, WI - Store #03601

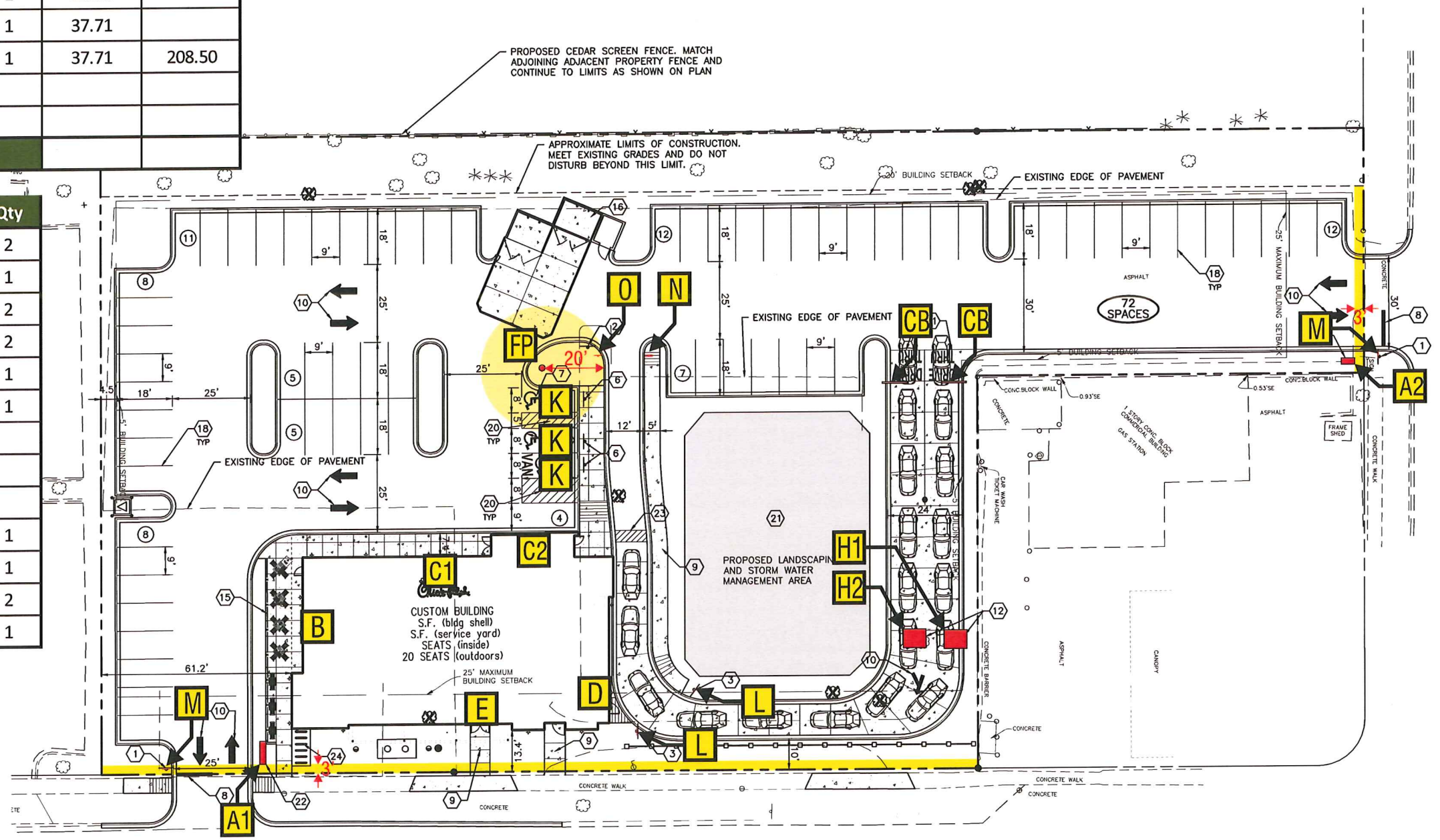
Exterior Elevations

See Finish Schedule for more information



Item	Description	Qty	Sign Area	Allowed
A1	Main ID Sign	1	72.00	72.00
A2	Main ID Sign	1	20.00	72.00
B	Wall Sign - Script 5' set	1	37.71	
C1	Wall Sign - Script 5' set	1	37.71	
C2	Wall Sign - Icon	1	25.00	
D	Wall Sign - Script 5' set	1	37.71	
E	Wall Sign - Script 5' set	1	37.71	208.50

Item	Description	Qty
K1	DOT - Handicapped Parking	2
K2	DOT - Handicapped Parking (Van)	1
L	DOT - Pedestrian Sign	2
M	DOT - Stop	2
N	DOT - Stop / Do Not Enter	1
O	DOT - Do Not Enter	1
H1	Menu Canopy (Lane 1)	1
H2	Menu Canopy (Lane 2)	1
CB	Clearance Bar	2
FP	Flag pole (50') freight not included	1



EAST WASHINGTON AVENUE FRONTAGE ROAD

EAST WASHINGTON AVENUE A/K/A SUN PRAIRIE ROAD (U.S. HIGHWAY NO. 151)



5198 North Lake Drive
 Lake City, GA 30260
 404.361.3800
 www.claytonsigns.com

SITE PLAN
DRAWING FILE - CFA - MADISON, WI SIGNAGE.CDR

ALL ELECTRICAL
 SIGNS ARE
 120 VOLTS
 UNLESS
 OTHERWISE INDICATED

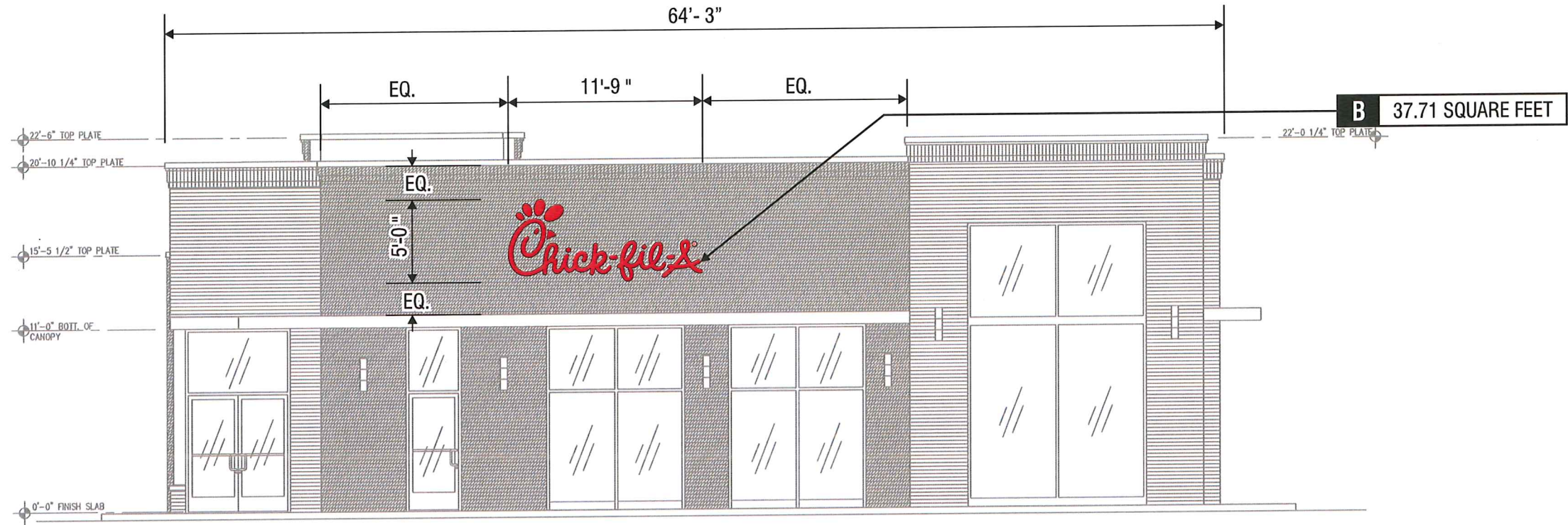
DRAWN BY	Ben Holliday
ACCOUNT REP.	Ben Holliday
DRAWING DATE	January 14, 2015
REVISION DATE	May 11, 2015

STORE NUMBER	STORE ADDRESS
L03601	Chick-fil-A at Madison, WI 4210 E Washington Ave Madison, WI 53704

THIS DRAWING IS AN ORIGINAL, UNPUBLISHED DESIGN CREATED BY CLAYTON SIGNS, INC. IT IS NOT TO BE REPRODUCED, CHANGED, OR EXHIBITED TO ANYONE OUTSIDE OF YOUR COMPANY IN WHOLE OR IN PART WITHOUT WRITTEN PERMISSION FROM THE OWNER OF CLAYTON SIGNS, INC. ANY SUCH ACTIONS MAY BE SUBJECT TO LEGAL ACTION IN A COURT OF LAW.

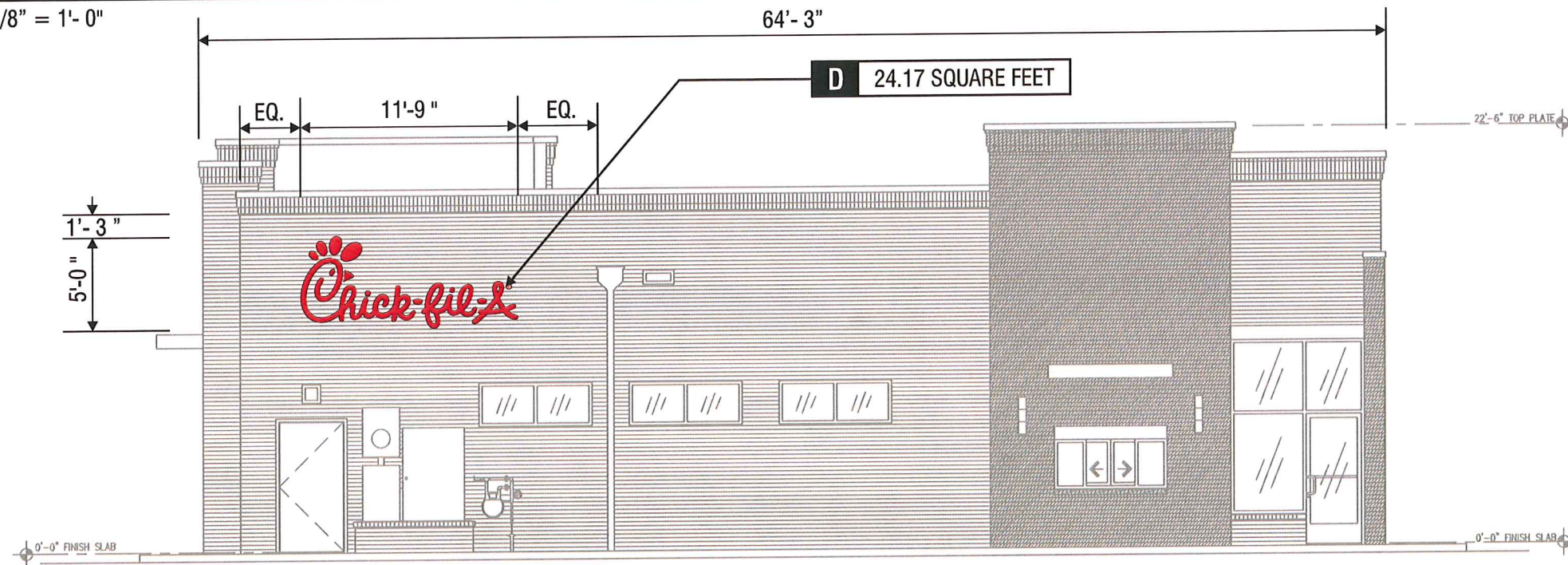
© 2015 ALL RIGHTS RESERVED

SITE PLAN



ELEVATION

SCALE - 1/8" = 1'- 0"



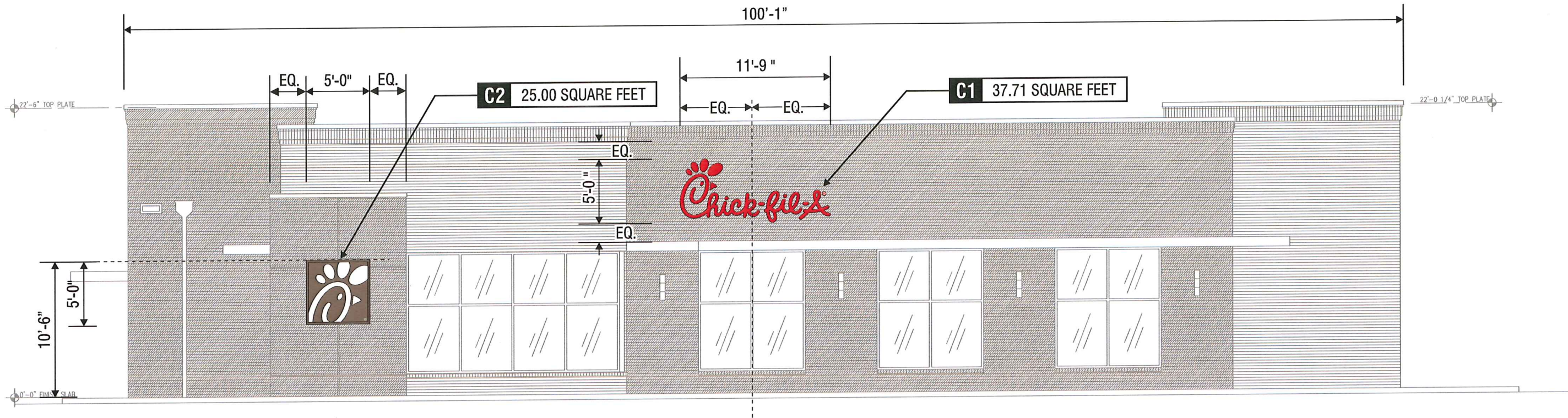
ELEVATION

SCALE - 1/8" = 1'- 0"



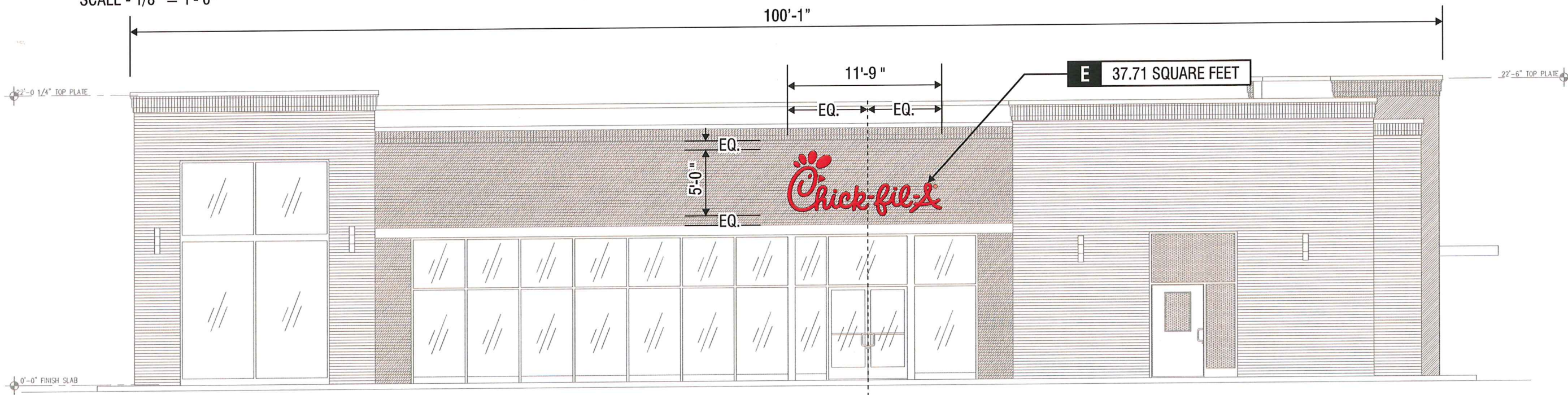
5198 North Lake Drive
Lake City, GA 30260
404.361.3800
www.claytonsigns.com

BUILDING S08C VERSION 8	BUILDING ELEVATIONS	ALL ELECTRICAL SIGNS ARE 120 VOLTS UNLESS OTHERWISE INDICATED	DRAWN BY Ben Holliday	STORE NUMBER L03601	STORE ADDRESS Chick-fil-A at Madison, WI 4210 E Washington Ave Madison, WI 53704	THIS DRAWING IS AN ORIGINAL, UNPUBLISHED DESIGN CREATED BY CLAYTON SIGNS, INC. IT IS NOT TO BE REPRODUCED, CHANGED, OR EXHIBITED TO ANYONE OUTSIDE OF YOUR COMPANY IN WHOLE OR IN PART WITHOUT WRITTEN PERMISSION FROM THE OWNER OF CLAYTON SIGNS, INC.. ANY SUCH ACTIONS MAY BE SUBJECT TO LEGAL ACTION IN A COURT OF LAW. © 2015 ALL RIGHTS RESERVED	BUILDING ELEVATIONS
	DRAWING FILE - CFA - MADISON, WI SIGNAGE.CDR		ACCOUNT REP. Ben Holliday	DRAWING DATE January 14, 2015	REVISION DATE May 11, 2015		



ELEVATION

SCALE - 1/8" = 1'-0"



ELEVATION

SCALE - 1/8" = 1'-0"



5198 North Lake Drive
Lake City, GA 30260
404.361.3800
www.claytonsigns.com

BUILDING
S08C
VERSION 8

BUILDING ELEVATIONS

DRAWING FILE - CFA - MADISON, WI SIGNAGE.CDR

ALL ELECTRICAL
SIGNS ARE
120 VOLTS
UNLESS
OTHERWISE INDICATED

DRAWN BY	Ben Holliday
ACCOUNT REP.	Ben Holliday
DRAWING DATE	January 14, 2015
REVISION DATE	May 11, 2015

STORE NUMBER
L03601

STORE ADDRESS

Chick-fil-A at Madison, WI
4210 E Washington Ave
Madison, WI 53704

THIS DRAWING IS AN ORIGINAL, UNPUBLISHED DESIGN CREATED BY CLAYTON SIGNS, INC. IT IS NOT TO BE REPRODUCED, CHANGED, OR EXHIBITED TO ANYONE OUTSIDE OF YOUR COMPANY IN WHOLE OR IN PART WITHOUT WRITTEN PERMISSION FROM THE OWNER OF CLAYTON SIGNS, INC.. ANY SUCH ACTIONS MAY BE SUBJECT TO LEGAL ACTION IN A COURT OF LAW.
© 2015 ALL RIGHTS RESERVED

BUILDING
ELEVATIONS

SPECIFICATIONS

CABINET

ALUMINUM CABINET HAS STEEL FRAME WITH .080 ALUMINUM CLADDING, RETAINERS AND FILLER.

CHICK-FIL-A ICON

ACRYLIC FACES DECORATED WITH TRANSLUCENT VINYL FILM ON SURFACE OF ACRYLIC. FACES ARE BACKLIT BY HIGH OUTPUT FLUORESCENT LAMPS SPACED EVENLY ON 8" CENTERS.



FACES
230-53 CARDINAL RED
TRANSLUCENT VINYL FILM

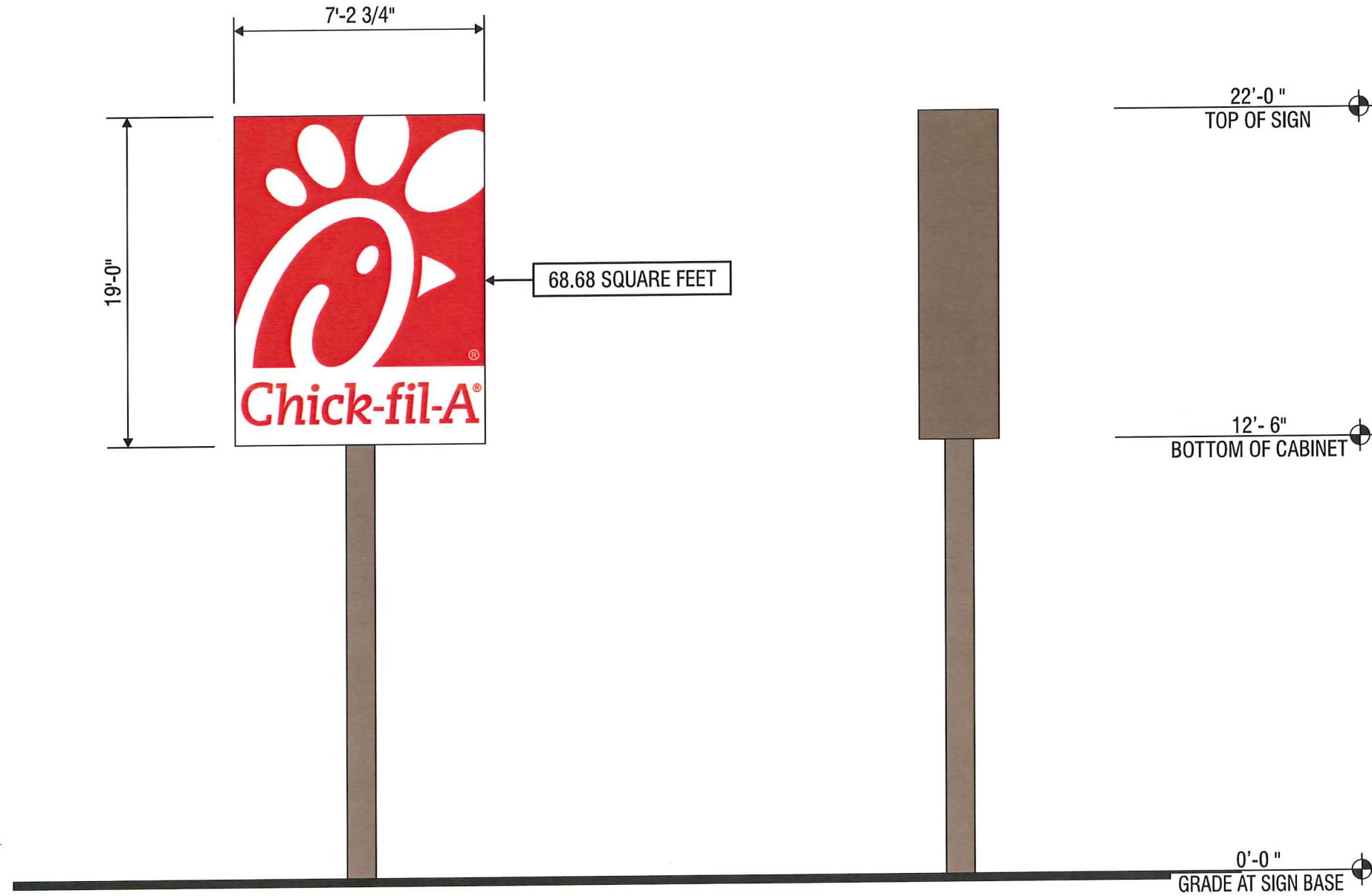


7328 WHITE ACRYLIC



ALUMINUM SURFACES
PAINTED DARK BRONZE
TO MATCH BUILDING

REFER TO
ENGINEERS STAMPED
DRAWING FOR FOUNDATION



ELEVATION

SCALE - 1/4" = 1'- 0"

END VIEW

SCALE - 1/4" = 1'- 0"

 	FLOURESCENT CABINET LIGHTING T8/HO/LAMPS POWER SUPPLY EESB ELECTRONIC BALLAST	WET LOCATION CONNECT THE AC LINE TO THE BLACK (LINE) AND WHITE (NEUTRAL) INPUT WIRES OF THE POWER SUPPLY USING 18-14 AWG TWIST ON WIRE CONNECTORS. GROUND POWER SUPPLY GREEN WIRE TO GROUNDING SCREW.	WHITE BLACK YEL/GRN BALLAST BLUE RED
	THIS SIGN IS INTENDED TO BE INSTALLED IN ACCORDANCE WITH REQUIREMENTS OF ARTICLE 600 OF THE NATIONAL ELECTRICAL CODE AND/OR APPLICABLE LOCAL CODES. THIS INCLUDES PROPER GROUNDING & BONDING OF THE SIGN.		



5198 North Lake Drive
Lake City, GA 30260
404.361.3800
www.claytonsigns.com

SIGN TYPE
1

DOUBLE-FACED INTERNALLY-ILLUMINATED PYLON SIGN

DRAWING FILE - CFA - MADISON, WI SIGNAGE.CDR

ALL ELECTRICAL
SIGNS ARE
120 VOLTS
UNLESS
OTHERWISE INDICATED

DRAWN BY	Ben Holliday
ACCOUNT REP.	Ben Holliday
DRAWING DATE	January 14, 2015
REVISION DATE	May 11, 2015

STORE NUMBER
L03601

STORE ADDRESS
Chick-fil-A at Madison, WI
4210 E Washington Ave
Madison, WI 53704

THIS DRAWING IS AN ORIGINAL, UNPUBLISHED DESIGN CREATED BY CLAYTON SIGNS, INC. IT IS NOT TO BE REPRODUCED, CHANGED, OR EXHIBITED TO ANYONE OUTSIDE OF YOUR COMPANY IN WHOLE OR IN PART WITHOUT WRITTEN PERMISSION FROM THE OWNER OF CLAYTON SIGNS, INC.. ANY SUCH ACTIONS MAY BE SUBJECT TO LEGAL ACTION IN A COURT OF LAW.
© 2015 ALL RIGHTS RESERVED

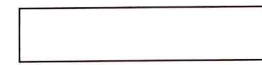
LOCATION
A

SPECIFICATIONS

CABINET
 ALUMINUM CABINET HAS EXTRUDED ALUMINUM FRAME .
CHICK-FIL-A ICON
 ACRYLIC FACES DECORATED WITH TRANSLUCENT VINYL FILM ON SURFACE OF ACRYLIC. FACES ARE BACKLIT BY HIGH OUTPUT FLUORESCENT LAMPS SPACED EVENLY ON 8" CENTERS.



FACES
 ARLON 230-53 CARDINAL RED



ARLON CAST FLEX 10 FLEX MATERIAL
 WHITE LEXAN



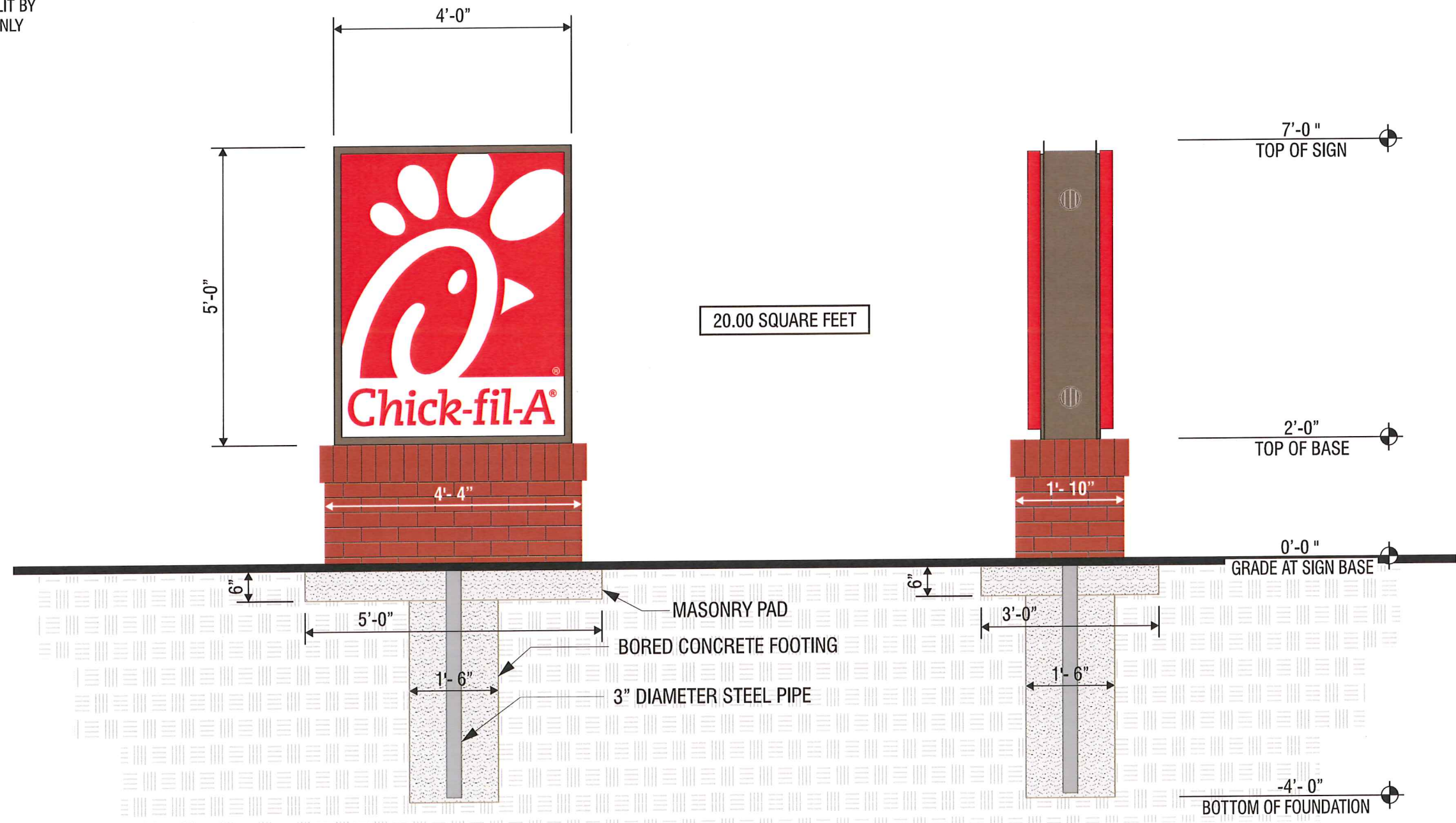
ALUMINUM SURFACES
 PAINTED DARK BRONZE
 TO MATCH BUILDING



MASONRY TO MATCH BUILDING

MASONRY WORK AND CONCRETE PAD FOR MASONRY WORK IS FURNISHED BY THE GENERAL CONTRACTOR SIGN FOUNDATION IS FURNISHED BY CLAYTON SIGNS, INC.

REFER TO ENGINEERS STAMPED DRAWING FOR FOUNDATION



ELEVATION

SCALE - 1/2" = 1'- 0"

END VIEW

SCALE - 1/2" = 1'- 0"

 CLAYTON SIGNS C UL US LISTED	FLOURESCENT CABINET LIGHTING T8/HO/LAMPS POWER SUPPLY EESB ELECTRONIC BALLAST	WET LOCATION CONNECT THE AC LINE TO THE BLACK (LINE) AND WHITE (NEUTRAL) INPUT WIRES OF THE POWER SUPPLY USING 18-14 AWG TWIST ON WIRE CONNECTORS. GROUND POWER SUPPLY GREEN WIRE TO GROUNDING SCREW.	WHITE BLACK YEL/GRN BLUE RED
	BALLAST		
THIS SIGN IS INTENDED TO BE INSTALLED IN ACCORDANCE WITH REQUIREMENTS OF ARTICLE 600 OF THE NATIONAL ELECTRICAL CODE AND/OR APPLICABLE LOCAL CODES. THIS INCLUDES PROPER GROUNDING & BONDING OF THE SIGN.			



5198 North Lake Drive
 Lake City, GA 30260
 404.361.3800
 www.claytonsigns.com

SIGN TYPE 2	DOUBLE-FACED INTERNALLY-ILLUMINATED MONUMENT SIGN	ALL ELECTRICAL SIGNS ARE 120 VOLTS UNLESS OTHERWISE INDICATED	DRAWN BY Ben Holliday	STORE NUMBER L03601	STORE ADDRESS Chick-fil-A at Madison, WI 4210 E Washington Ave Madison, WI 53704	THIS DRAWING IS AN ORIGINAL, UNPUBLISHED DESIGN CREATED BY CLAYTON SIGNS, INC. IT IS NOT TO BE REPRODUCED, CHANGED, OR EXHIBITED TO ANYONE OUTSIDE OF YOUR COMPANY IN WHOLE OR IN PART WITHOUT WRITTEN PERMISSION FROM THE OWNER OF CLAYTON SIGNS, INC.. ANY SUCH ACTIONS MAY BE SUBJECT TO LEGAL ACTION IN A COURT OF LAW. © 2015 ALL RIGHTS RESERVED	LOCATION A2
	DRAWING FILE - CFA - MADISON, WI SIGNAGE.CDR		ACCOUNT REP. Ben Holliday	DRAWING DATE January 14, 2015	REVISION DATE May 11, 2015		

SPECIFICATIONS

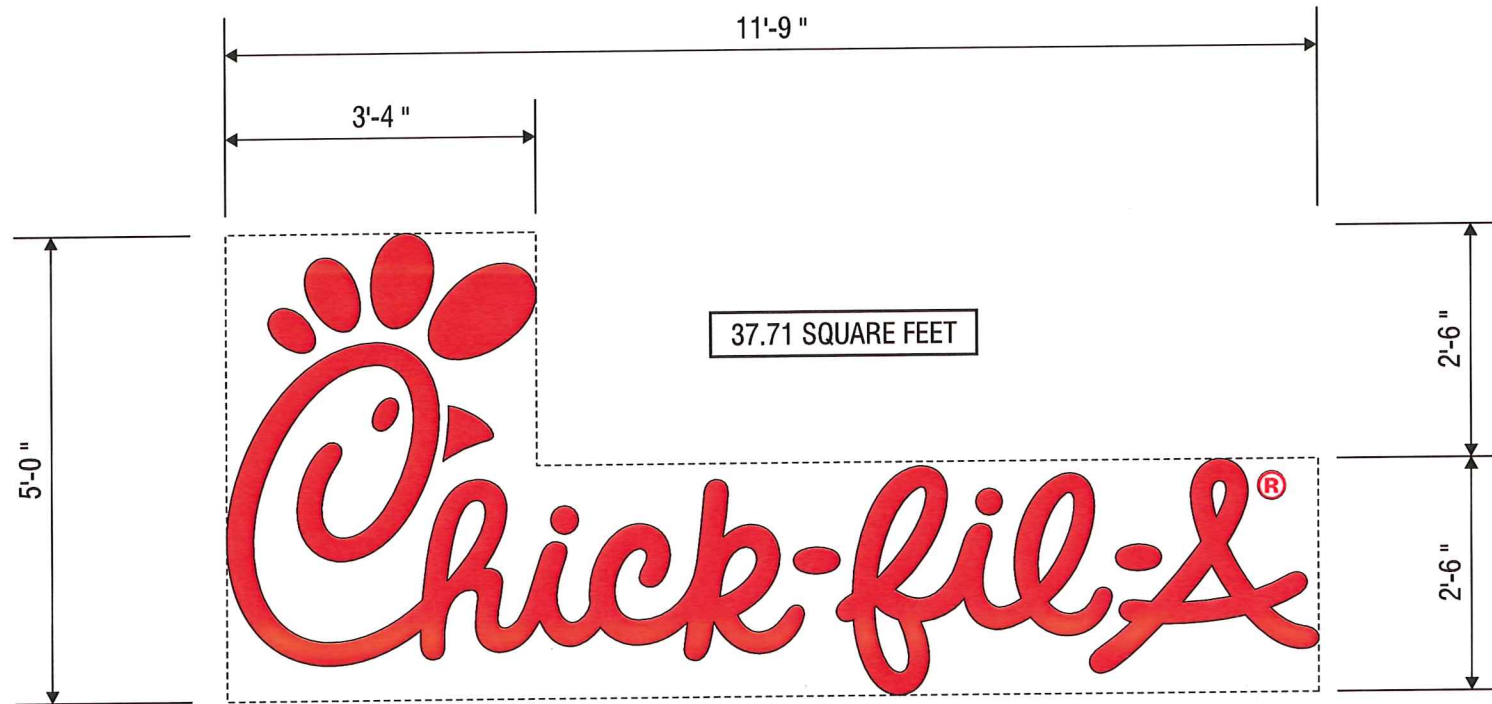
CHICK-FIL-A SCRIPT LETTERS
 LETTERS ARE LED-ILLUMINATED
 CHANNEL LETTERS MOUNTED
 ON ALUMINUM SURFACE OF BUILDING
 WITH TRANSFORMERS REMOTELY
 LOCATED BEHIND THE WALL IN
 UL APPROVED TRANSFORMER BOXES.
 FACES ARE 3/16" ACRYLIC
 RETURNS ARE .063 ALUMINUM
 BACKS ARE .080 ALUMINUM
 ALL RETURNS ARE ARC-WELDED TO
 LETTER BACKS



CHANNEL LETTER FACES
 2793 RED ACRYLIC
 TRIMCAP RETAINER-
 1" RED JEWELITE TRIMCAP

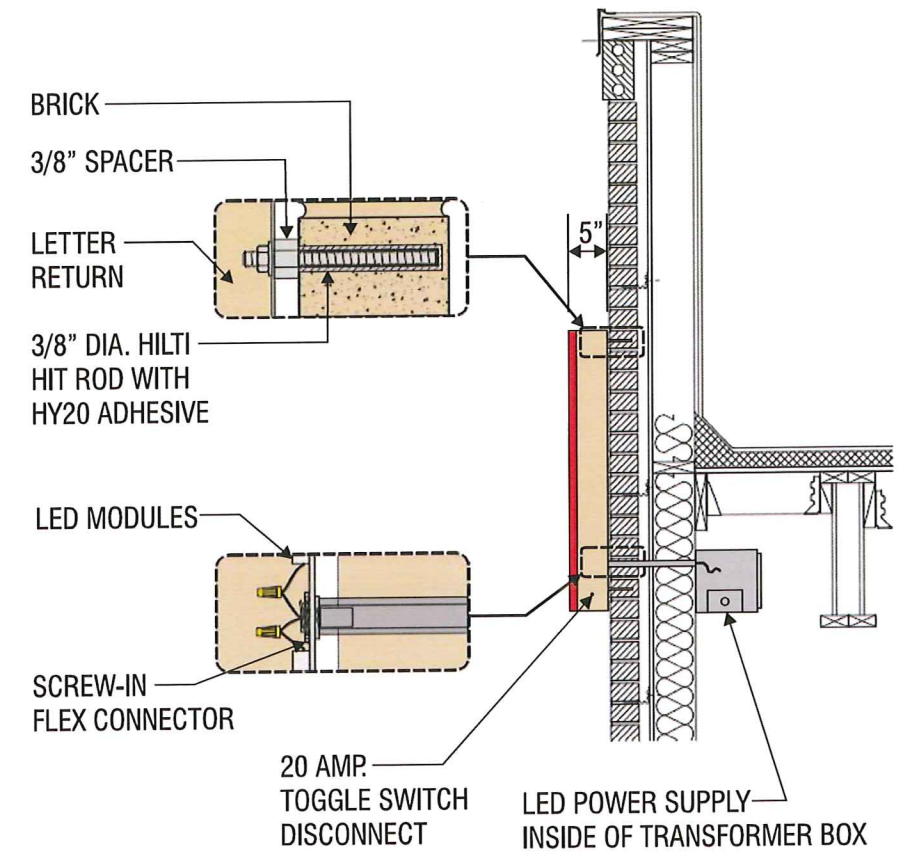


ALUMINUM RETURNS
 PAINTED TO MATCH
 SHERWIN WILLIAMS
 SW6108 LATTE



ELEVATION

SCALE - 1/2" = 1'-0"



CROSS-SECTION

SCALE - 1/2" = 1'-0"

	CHANNEL LETTERS (RED ILLUMINATION) LED'S JTSLS016R-0.4 RED LED POWER SUPPLY BL-120-12-60 POWER SUPPLY		WET LOCATION CONNECT THE AC LINE TO THE BLACK (LINE) AND WHITE (NEUTRAL) INPUT WIRES OF THE POWER SUPPLY USING 18-14 AWG TWIST ON WIRE CONNECTORS. GROUND POWER SUPPLY GREEN WIRE TO GROUNDING SCREW. REPLACE JUNCTION BOX COVER.
	THIS SIGN IS INTENDED TO BE INSTALLED IN ACCORDANCE WITH REQUIREMENTS OF ARTICLE 600 OF THE NATIONAL ELECTRICAL CODE AND/OR APPLICABLE LOCAL CODES. THIS INCLUDES PROPER GROUNDING & BONDING OF THE SIGN.		

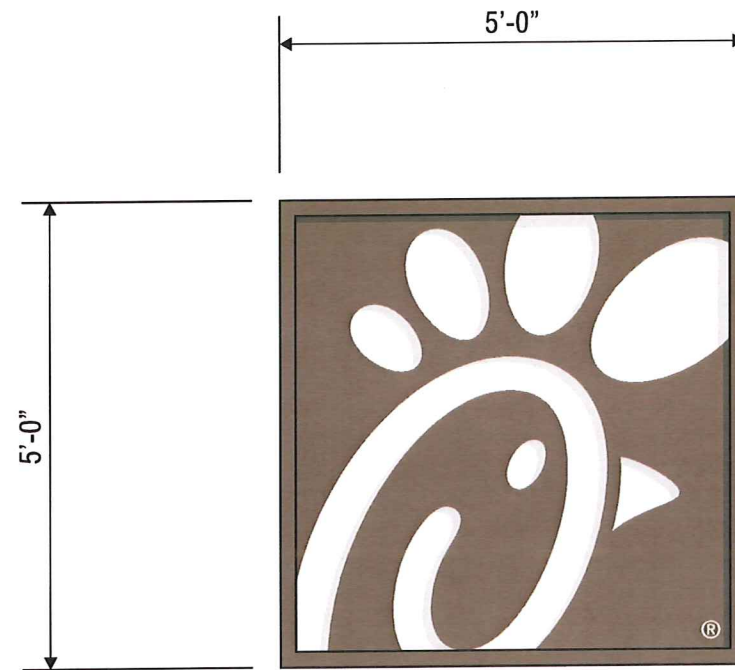
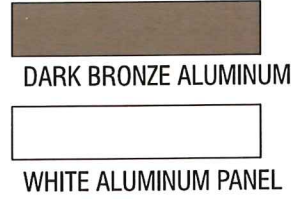


5198 North Lake Drive
 Lake City, GA 30260
 404.361.3800
 www.claytonsigns.com

SIGN TYPE 3.5	LED-ILLUMINATED CHANNEL LETTER WALL SIGN	ALL ELECTRICAL SIGNS ARE 120 VOLTS UNLESS OTHERWISE INDICATED	DRAWN BY Ben Holliday	STORE NUMBER L03601	STORE ADDRESS Chick-fil-A at Madison, WI 4210 E Washington Ave Madison, WI 53704	THIS DRAWING IS AN ORIGINAL, UNPUBLISHED DESIGN CREATED BY CLAYTON SIGNS, INC. IT IS NOT TO BE REPRODUCED, CHANGED, OR EXHIBITED TO ANYONE OUTSIDE OF YOUR COMPANY IN WHOLE OR IN PART WITHOUT WRITTEN PERMISSION FROM THE OWNER OF CLAYTON SIGNS, INC.. ANY SUCH ACTIONS MAY BE SUBJECT TO LEGAL ACTION IN A COURT OF LAW. © 2015 ALL RIGHTS RESERVED	LOCATION B-C1 D-E
	DRAWING FILE - CFA - MADISON, WI SIGNAGE.CDR		ACCOUNT REP. Ben Holliday	DRAWING DATE January 14, 2015	REVISION DATE May 11, 2015		

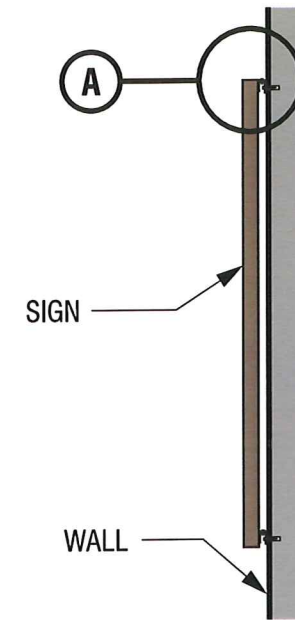
SPECIFICATIONS

LOGO IS NON-ILLUMINATED ALUMINUM CONSTRUCTION
 ICON WITH STENCIL CUT GRAPHICS SPACED OUT FROM
 A WHITE ALUMINUM BACKER PANEL.



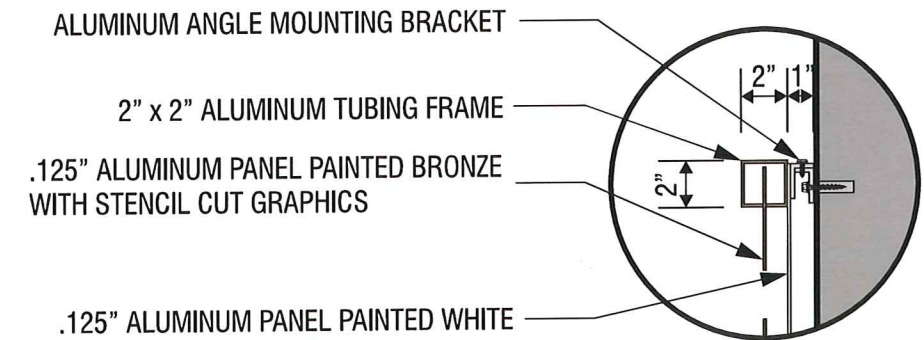
ELEVATION

SCALE - 1/2" = 1'- 0"



END VIEW

SCALE - 1/2" = 1'- 0"



CROSS-SECTION A

SCALE - 1/2" = 1'- 0"



5198 North Lake Drive
 Lake City, GA 30260
 404.361.3800
 www.claytonsigns.com

NON-ILLUMINATED WALL SIGN	DRAWING FILE - CFA - MADISON, WI SIGNAGE.CDR	ALL ELECTRICAL SIGNS ARE 120 VOLTS UNLESS OTHERWISE INDICATED	DRAWN BY	Ben Holliday	STORE NUMBER		STORE ADDRESS	THIS DRAWING IS AN ORIGINAL, UNPUBLISHED DESIGN CREATED BY CLAYTON SIGNS, INC. IT IS NOT TO BE REPRODUCED, CHANGED, OR EXHIBITED TO ANYONE OUTSIDE OF YOUR COMPANY IN WHOLE OR IN PART WITHOUT WRITTEN PERMISSION FROM THE OWNER OF CLAYTON SIGNS, INC.. ANY SUCH ACTIONS MAY BE SUBJECT TO LEGAL ACTION IN A COURT OF LAW.	LOCATION C2
			ACCOUNT REP.	Ben Holliday	L03601	Chick-fil-A at Madison, WI 4210 E Washington Ave Madison, WI 53704			
			DRAWING DATE	January 14, 2015					
			REVISION DATE	May 11, 2015					

SPECIFICATIONS

CANOPY TOP

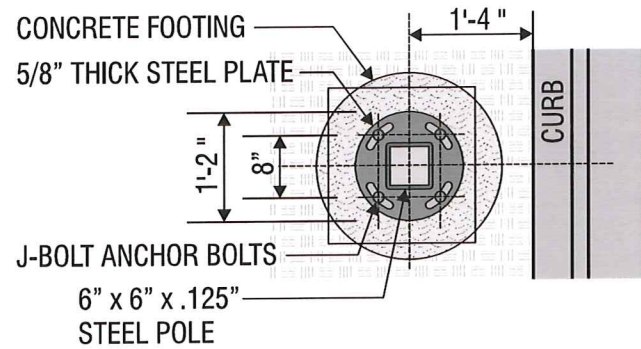
METAL TOP (OPAQUE) WITH COLOR TO MATCH BUILDING COLOR.

STRUCTURE

6" X 6" STEEL SUPPORT POLE INSTALLED INTO CONCRETE FOOTING WITH ANCHOR BOLTS. 3" ALUMINUM TUBING FRAME ON CANOPY TOP.

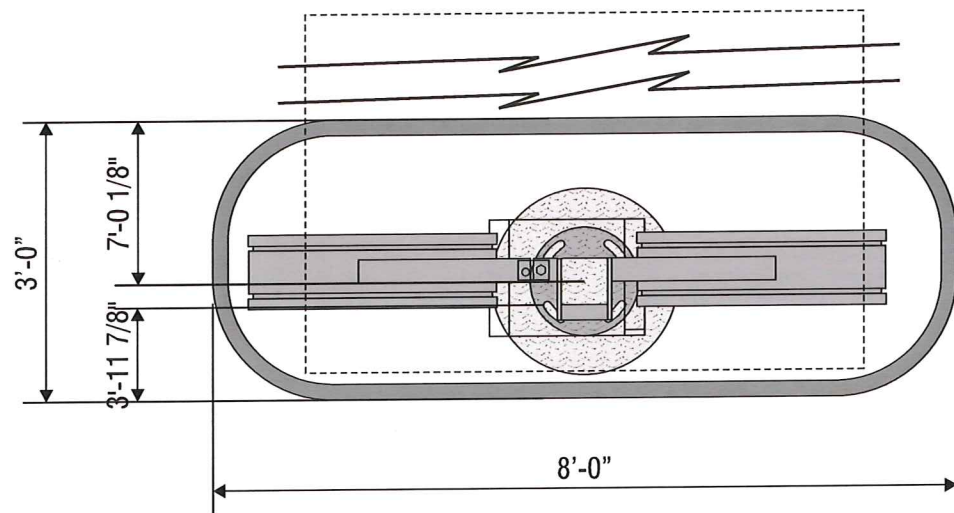
MENU BOARDS

PIVOTING ALUMINUM CONSTRUCTION CABINETS INTERNALLY ILLUMINATED WITH OPENINGS TO FIT MENU GRAPHICS. BOARDS INTERNALLY ILLUMINATED BY BY LEDS.



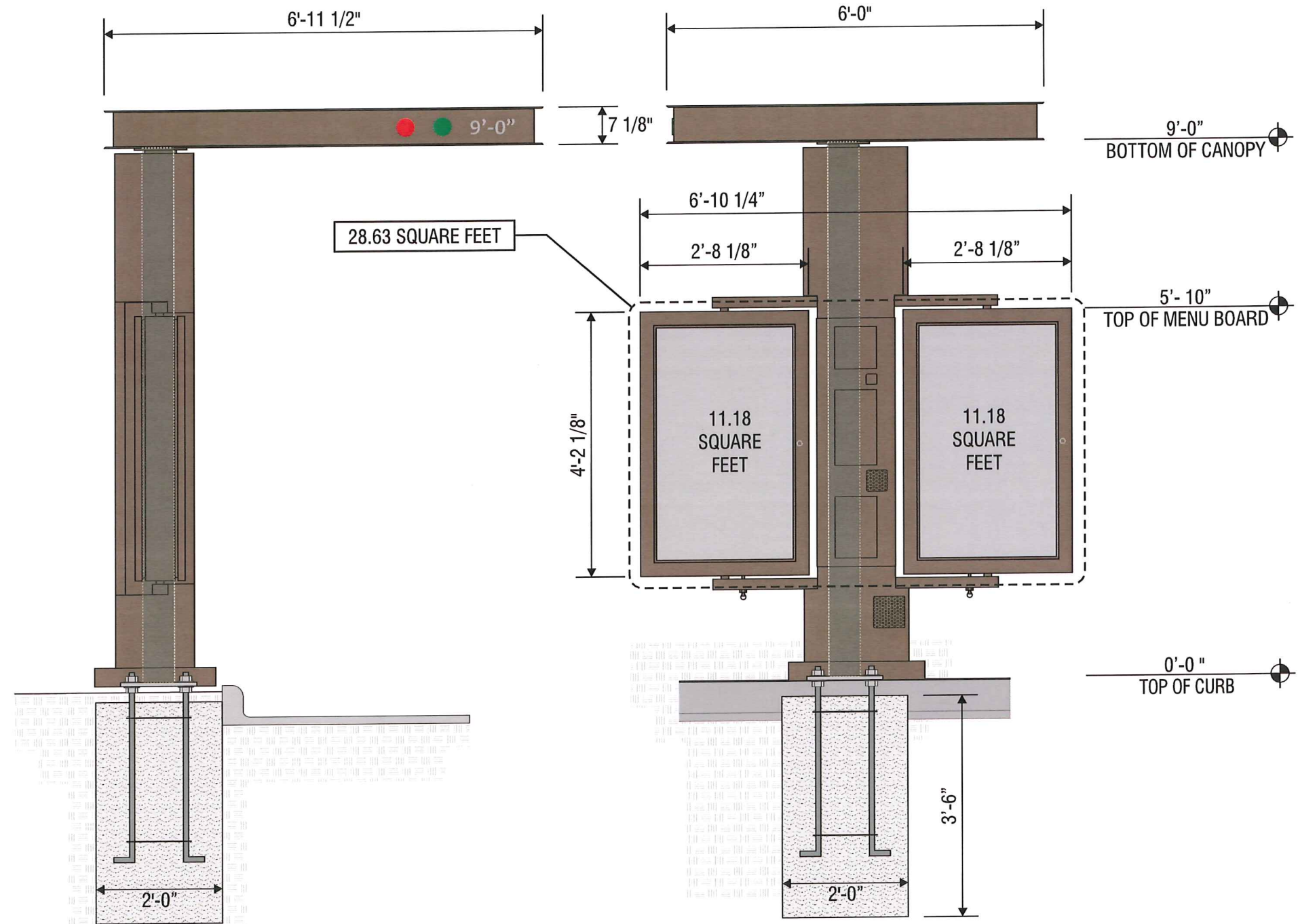
BOLT DETAIL

SCALE - 1/2" = 1'-0"



OUTER LANE ISLAND PLAN VIEW

SCALE - 1/2" = 1'-0"



END VIEW

SCALE - 1/2" = 1'-0"

ELEVATION

SCALE - 1/2" = 1'-0"



5198 North Lake Drive
Lake City, GA 30260
404.361.3800
www.claytonsigns.com

MENU CANOPY/MENU BOARD

DRAWING FILE - CFA - MADISON, WI SIGNAGE.CDR

ALL ELECTRICAL
SIGNS ARE
120 VOLTS
UNLESS
OTHERWISE INDICATED

DRAWN BY	Ben Holliday
ACCOUNT REP.	Ben Holliday
DRAWING DATE	January 14, 2015
REVISION DATE	May 11, 2015

STORE NUMBER
L03601

STORE ADDRESS

Chick-fil-A at Madison, WI
4210 E Washington Ave
Madison, WI 53704

THIS DRAWING IS AN ORIGINAL, UNPUBLISHED DESIGN CREATED BY CLAYTON SIGNS, INC. IT IS NOT TO BE REPRODUCED, CHANGED, OR EXHIBITED TO ANYONE OUTSIDE OF YOUR COMPANY IN WHOLE OR IN PART WITHOUT WRITTEN PERMISSION FROM THE OWNER OF CLAYTON SIGNS, INC.. ANY SUCH ACTIONS MAY BE SUBJECT TO LEGAL ACTION IN A COURT OF LAW.

© 2015 ALL RIGHTS RESERVED

LOCATION
H1/H2

SPECIFICATIONS

SIGN PANELS

PANELS ARE .080 ALUMINUM WITH REFLECTIVE BACKGROUND AND GRAPHICS.

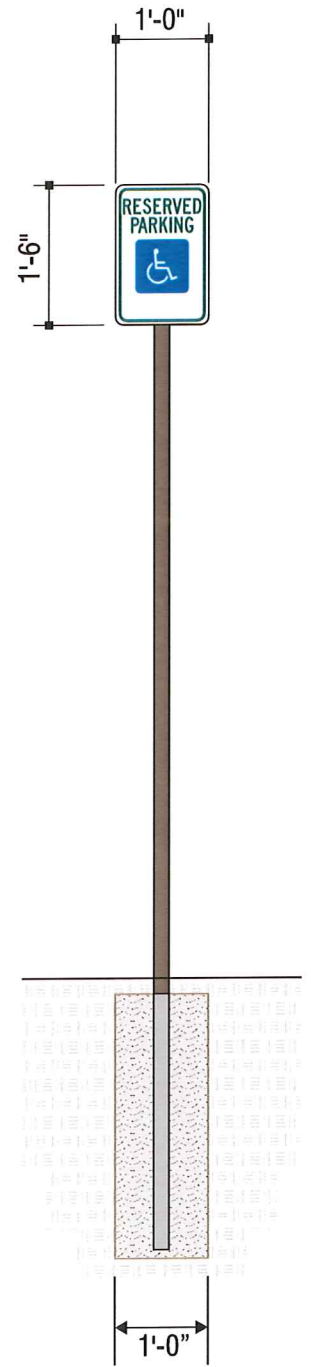
SIGN POSTS

POSTS ARE 2" x 2" SQUARE ALUMINUM TUBING CAPPED ON TOP

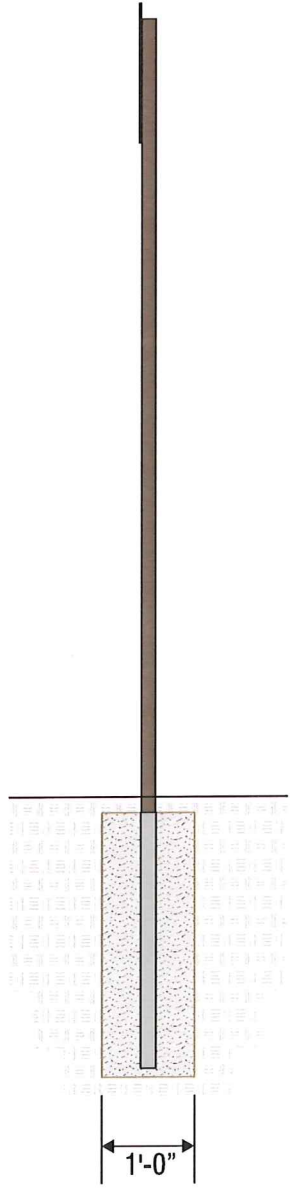


BACK OF SIGN PANEL AND POST
DARK BRONZE

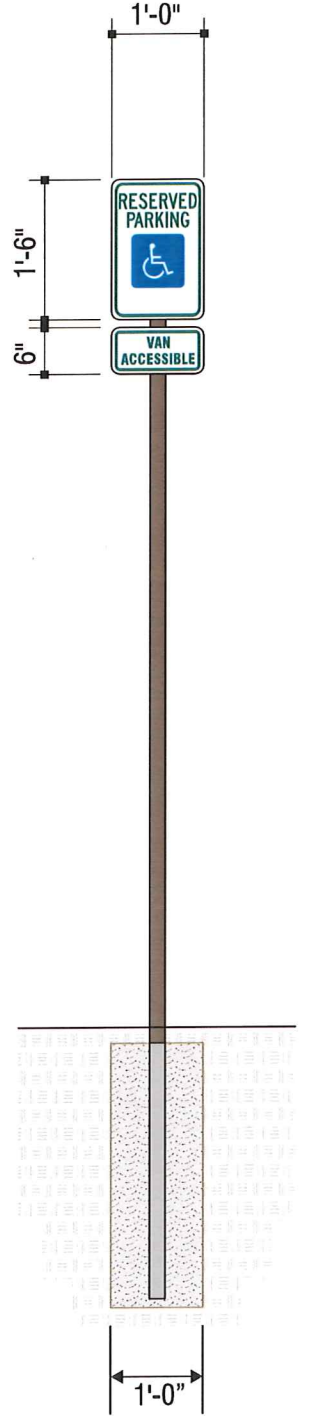
NOTE: IF THIS SIGN IS LOCATED ON THE SIDEWALK THEN IT IS THE RESPONSIBILITY OF THE GENERAL CONTRACTOR TO INSTALL A PVC SLEEVE INTO THE CONCRETE WHEN THE SIDEWALK IS POURED PRIOR TO INSTALLATION OF THE SIGN' BY CLAYTON SIGNS.



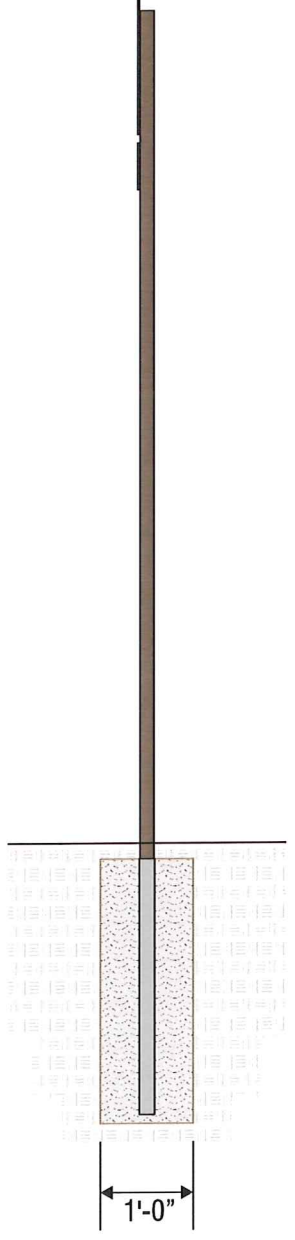
ELEVATION
SCALE - 1/2" = 1'- 0"



END VIEW
SCALE - 1/2" = 1'- 0"



ELEVATION
SCALE - 1/2" = 1'- 0"



END VIEW
SCALE - 1/2" = 1'- 0"



5198 North Lake Drive
Lake City, GA 30260
404.361.3800
www.claytonsigns.com

SIGN TYPE 7	DOT REGULATORY TRAFFIC SIGNS
	DRAWING FILE - CFA - MADISON, WI SIGNAGE.CDR

ALL ELECTRICAL SIGNS ARE 120 VOLTS UNLESS OTHERWISE INDICATED

DRAWN BY	Ben Holliday
ACCOUNT REP.	Ben Holliday
DRAWING DATE	January 14, 2015
REVISION DATE	May 11, 2015

STORE NUMBER	L03601
--------------	--------

STORE ADDRESS	Chick-fil-A at Madison, WI 4210 E Washington Ave Madison, WI 53704
---------------	--

THIS DRAWING IS AN ORIGINAL, UNPUBLISHED DESIGN CREATED BY CLAYTON SIGNS, INC. IT IS NOT TO BE REPRODUCED, CHANGED, OR EXHIBITED TO ANYONE OUTSIDE OF YOUR COMPANY IN WHOLE OR IN PART WITHOUT WRITTEN PERMISSION FROM THE OWNER OF CLAYTON SIGNS, INC.. ANY SUCH ACTIONS MAY BE SUBJECT TO LEGAL ACTION IN A COURT OF LAW.
© 2015 ALL RIGHTS RESERVED

LOCATION
K

SPECIFICATIONS

SIGN PANELS

PANELS ARE .080 ALUMINUM WITH REFLECTIVE BACKGROUND AND GRAPHICS.

SIGN POSTS

POSTS ARE 2" x 2" SQUARE ALUMINUM TUBING CAPPED ON TOP



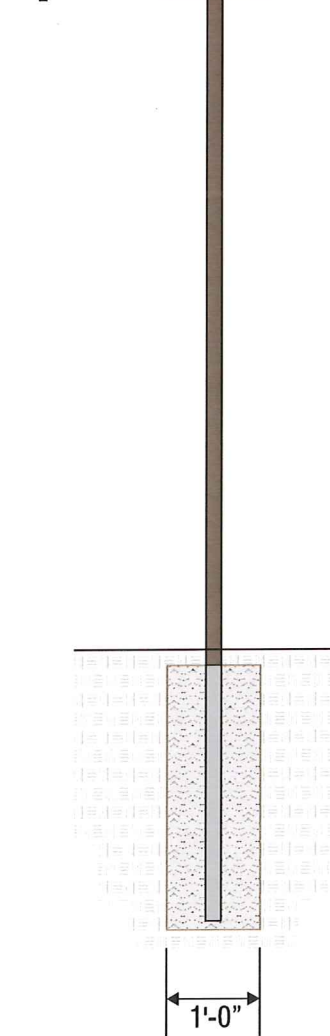
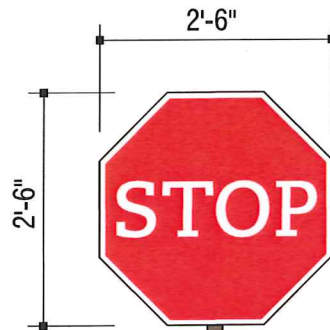
SIGN PANEL
RED REFLECTIVE



SIGN PANEL
WHITE REFLECTIVE

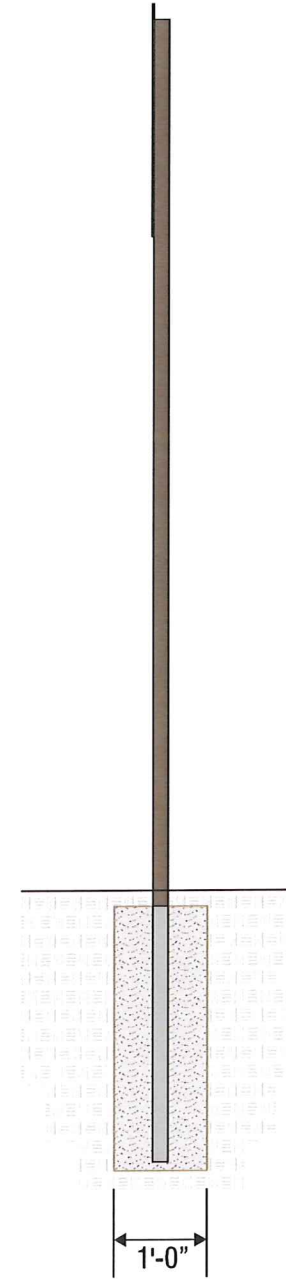


BACK OF SIGN PANEL AND POST
DARK BRONZE



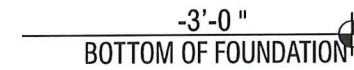
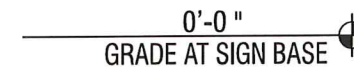
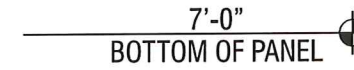
ELEVATION

SCALE - 1/2" = 1'-0"



END VIEW

SCALE - 1/2" = 1'-0"



5198 North Lake Drive
Lake City, GA 30260
404.361.3800
www.claytonsigns.com

SIGN TYPE
7

DOT REGULATORY TRAFFIC SIGNS

DRAWING FILE - CFA - MADISON, WI SIGNAGE.CDR

ALL ELECTRICAL
SIGNS ARE
120 VOLTS
UNLESS
OTHERWISE INDICATED

DRAWN BY	Ben Holliday
ACCOUNT REP.	Ben Holliday
DRAWING DATE	January 14, 2015
REVISION DATE	May 11, 2015

STORE NUMBER
L03601

STORE ADDRESS
Chick-fil-A at Madison, WI
4210 E Washington Ave
Madison, WI 53704

THIS DRAWING IS AN ORIGINAL, UNPUBLISHED DESIGN CREATED BY CLAYTON SIGNS, INC. IT IS NOT TO BE REPRODUCED, CHANGED, OR EXHIBITED TO ANYONE OUTSIDE OF YOUR COMPANY IN WHOLE OR IN PART WITHOUT WRITTEN PERMISSION FROM THE OWNER OF CLAYTON SIGNS, INC.. ANY SUCH ACTIONS MAY BE SUBJECT TO LEGAL ACTION IN A COURT OF LAW.
© 2015 ALL RIGHTS RESERVED

LOCATION
M

SPECIFICATIONS

SIGN PANELS
 PANELS ARE .080 ALUMINUM WITH REFLECTIVE BACKGROUND AND GRAPHICS.
SIGN POSTS
 POSTS ARE 2" x 2" SQUARE ALUMINUM TUBING CAPPED ON TOP



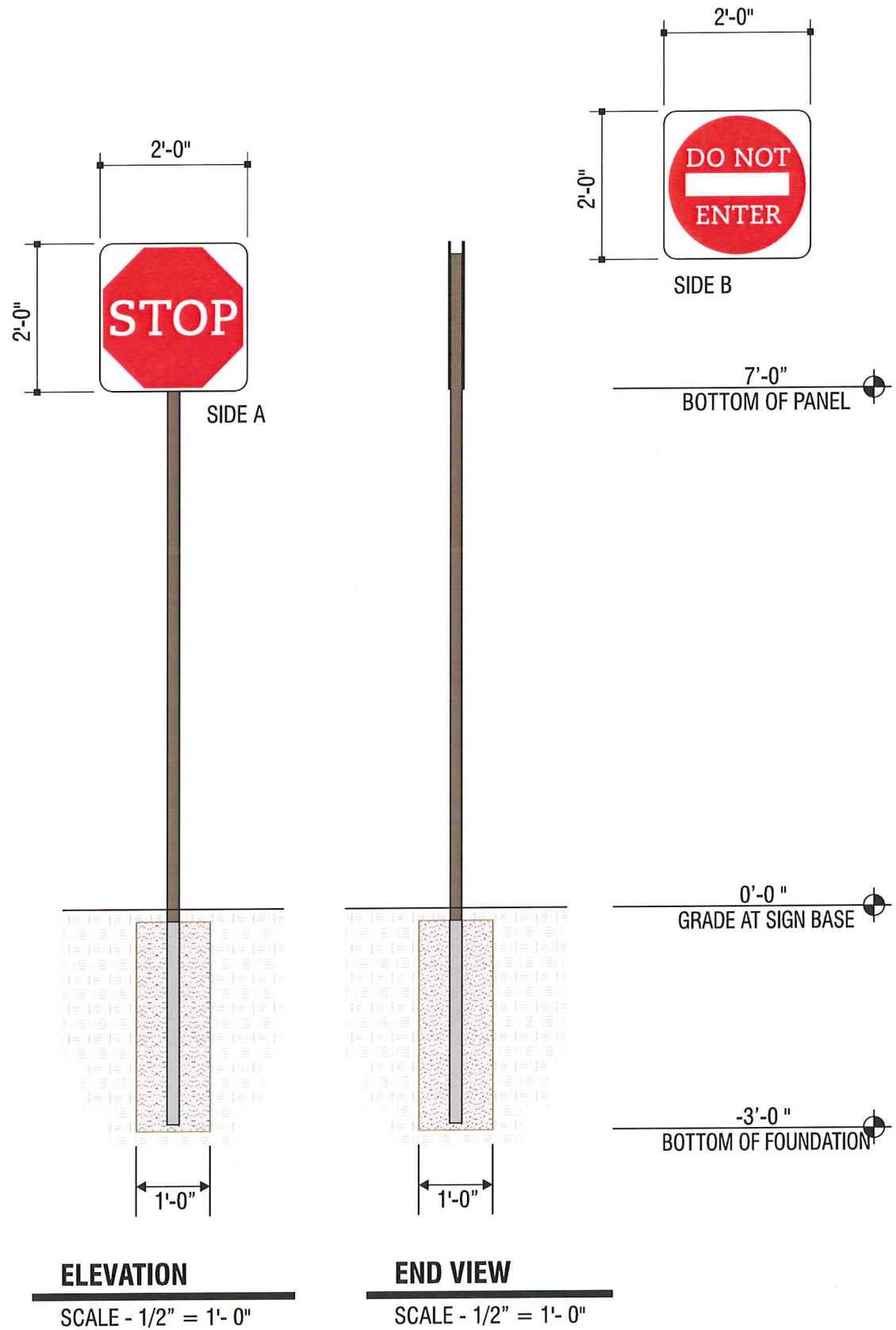
SIGN PANEL
 RED REFLECTIVE



SIGN PANEL
 WHITE REFLECTIVE

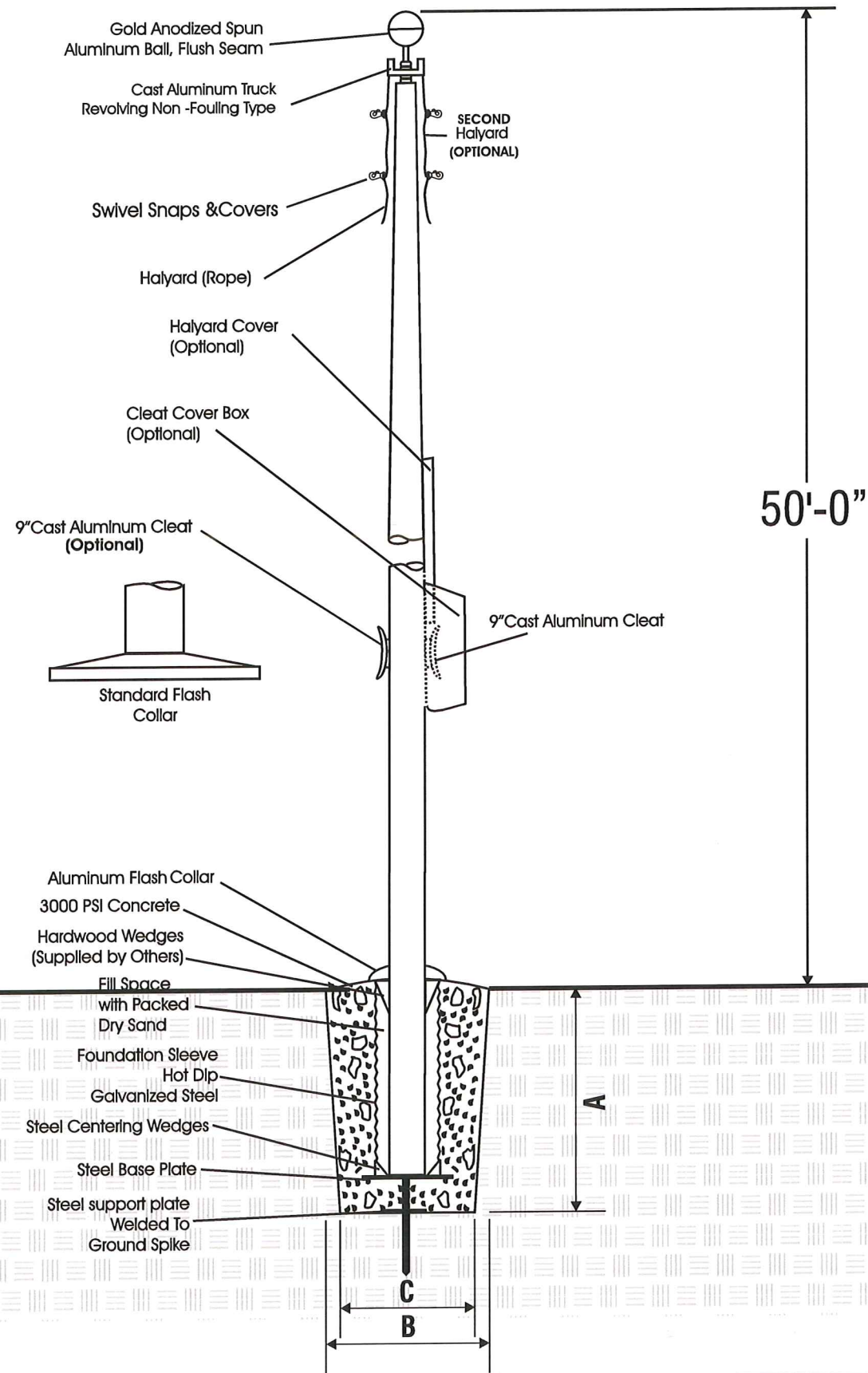
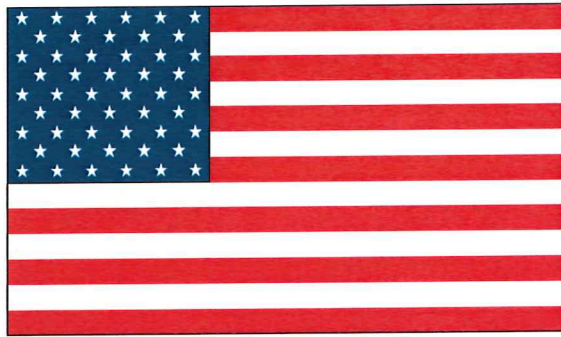


BACK OF SIGN PANEL AND POST
 DARK BRONZE



5198 North Lake Drive
 Lake City, GA 30260
 404.361.3800
 www.claytonsigns.com

SIGN TYPE 7	DOT REGULATORY TRAFFIC SIGNS	ALL ELECTRICAL SIGNS ARE 120 VOLTS UNLESS OTHERWISE INDICATED	DRAWN BY Ben Holliday	STORE NUMBER	STORE ADDRESS	THIS DRAWING IS AN ORIGINAL, UNPUBLISHED DESIGN CREATED BY CLAYTON SIGNS, INC. IT IS NOT TO BE REPRODUCED, CHANGED, OR EXHIBITED TO ANYONE OUTSIDE OF YOUR COMPANY IN WHOLE OR IN PART WITHOUT WRITTEN PERMISSION FROM THE OWNER OF CLAYTON SIGNS, INC. ANY SUCH ACTIONS MAY BE SUBJECT TO LEGAL ACTION IN A COURT OF LAW. © 2015 ALL RIGHTS RESERVED	LOCATION N
	DRAWING FILE - CFA - MADISON, WI SIGNAGE.CDR		ACCOUNT REP. Ben Holliday	L03601	Chick-fil-A at Madison, WI 4210 E Washington Ave Madison, WI 53704		
			DRAWING DATE January 14, 2015				
			REVISION DATE May 11, 2015				



FOUNDATION SIZES

HEIGHT	A	B	C
20'	3'6"	30"	24"
25'	3'6"	30"	24"
30'	3'6"	30"	24"
35'	4'0"	36"	30"
40'	4'6"	42"	36"
45'	5'0"	48"	42"
50'	5'6"	48"	42"

GROUND SLEEVE AND CONCRETE INSTALLED BY THE GENERAL CONTRACTOR
 POLE INSTALLED ON PRE-INSTALLED GROUND SLEEVE BY SIGN CONTRACTOR



5198 North Lake Drive
 Lake City, GA 30260
 404.361.3800
 www.claytonsigns.com

SIGN TYPE 10	FLAG POLE
	DRAWING FILE - CFA - MADISON, WI SIGNAGE.CDR

ALL ELECTRICAL SIGNS ARE 120 VOLTS UNLESS OTHERWISE INDICATED

DRAWN BY	Ben Holliday
ACCOUNT REP.	Ben Holliday
DRAWING DATE	January 14, 2015
REVISION DATE	May 11, 2015

STORE NUMBER
L03601

STORE ADDRESS
Chick-fil-A at Madison, WI 4210 E Washington Ave Madison, WI 53704

THIS DRAWING IS AN ORIGINAL, UNPUBLISHED DESIGN CREATED BY CLAYTON SIGNS, INC. IT IS NOT TO BE REPRODUCED, CHANGED, OR EXHIBITED TO ANYONE OUTSIDE OF YOUR COMPANY IN WHOLE OR IN PART WITHOUT WRITTEN PERMISSION FROM THE OWNER OF CLAYTON SIGNS, INC. ANY SUCH ACTIONS MAY BE SUBJECT TO LEGAL ACTION IN A COURT OF LAW.
 © 2015 ALL RIGHTS RESERVED

LOCATION
FP

SPECIFICATIONS

SUPPORT POLE

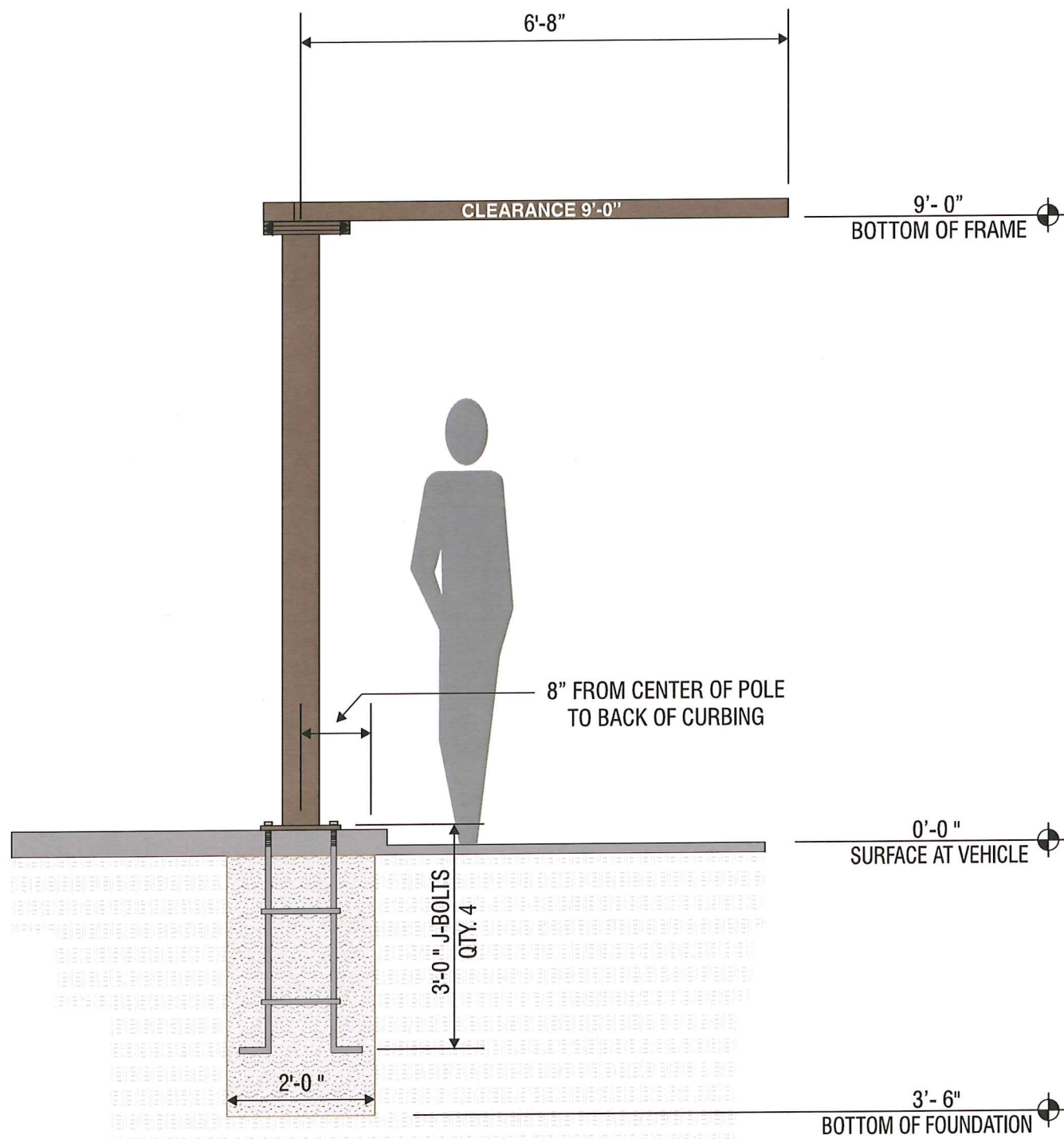
POLE HAS 13" x 13" x 3/4" THICK STEEL PLATE WITH FOUR (4) 1" DIA. HOLES IN EACH CORNER 2" FROM EACH END AND FOUR (4) ANCHOR BOLTS



METAL SURFACES
DARK BRONZE

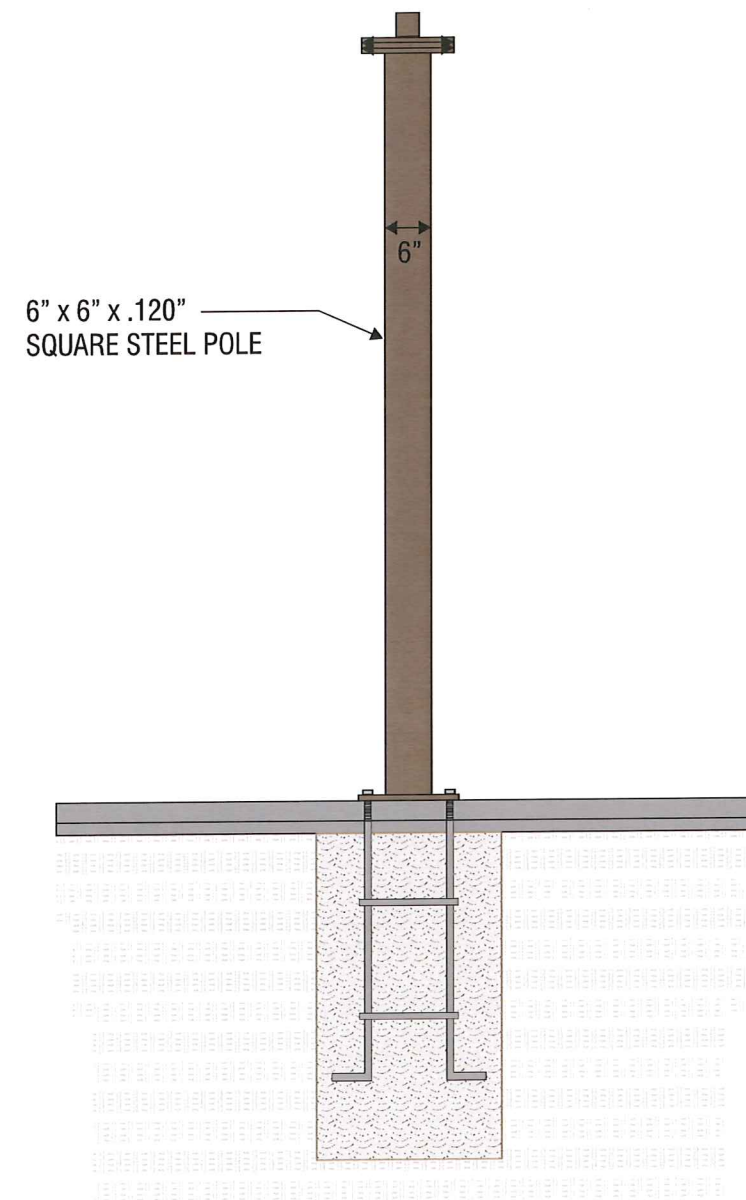


GRAPHICS
WHITE HIGH PERFORMANCE
VINYL FILM GRAPHICS



ELEVATION

SCALE - 1/2" = 1'-0"



END VIEW

SCALE - 1/2" = 1'-0"



5198 North Lake Drive
Lake City, GA 30260
404.361.3800
www.claytonsigns.com

SIGN TYPE
9E

CLEARANCE BAR

DRAWING FILE - CFA - MADISON, WI SIGNAGE.CDR

ALL ELECTRICAL
SIGNS ARE
120 VOLTS
UNLESS
OTHERWISE INDICATED

DRAWN BY	Ben Holliday
ACCOUNT REP.	Ben Holliday
DRAWING DATE	January 14, 2015
REVISION DATE	May 11, 2015

STORE NUMBER	L03601
--------------	--------

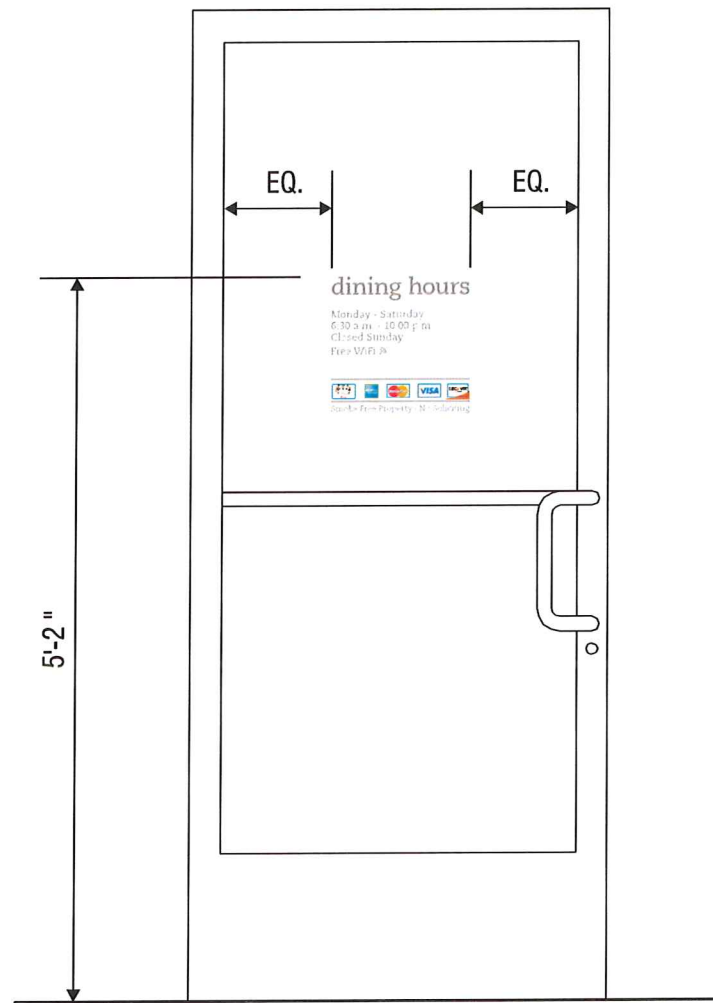
STORE ADDRESS

Chick-fil-A at Madison, WI
4210 E Washington Ave
Madison, WI 53704

THIS DRAWING IS AN ORIGINAL, UNPUBLISHED DESIGN CREATED BY CLAYTON SIGNS, INC. IT IS NOT TO BE REPRODUCED, CHANGED, OR EXHIBITED TO ANYONE OUTSIDE OF YOUR COMPANY IN WHOLE OR IN PART WITHOUT WRITTEN PERMISSION FROM THE OWNER OF CLAYTON SIGNS, INC. ANY SUCH ACTIONS MAY BE SUBJECT TO LEGAL ACTION IN A COURT OF LAW.

©2015 ALL RIGHTS RESERVED

LOCATION
CB



ELEVATION

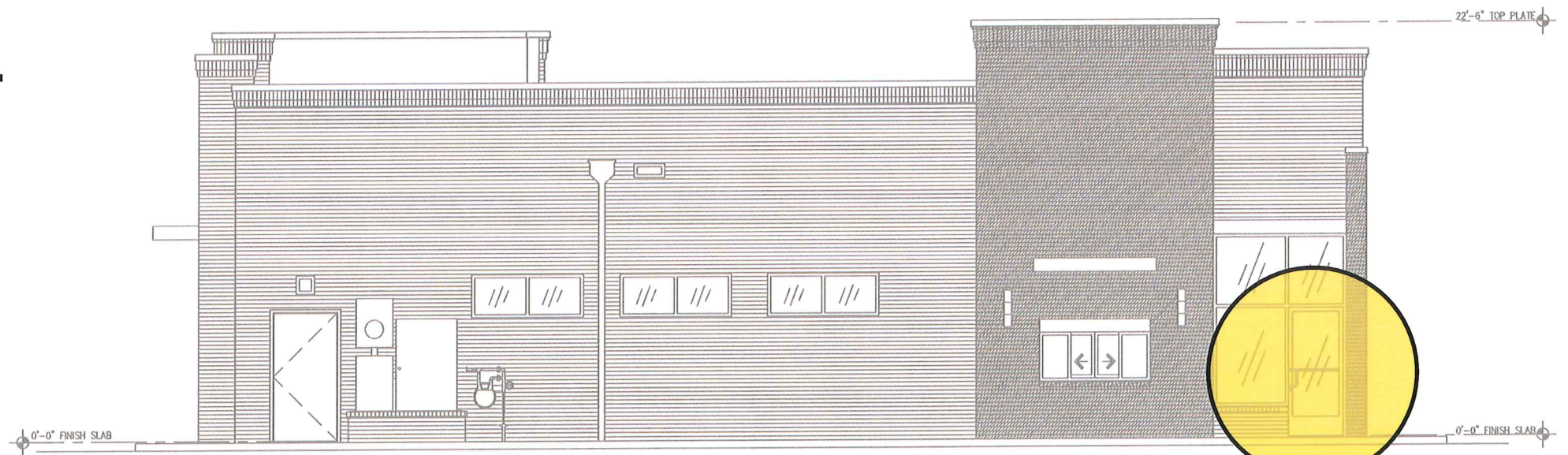
SCALE - 3/4" = 1'-0"



LETTERING IS WHITE VINYL FILM
 CREDIT CARD LOGOS ARE PRINTED DECALS ON CLEAR FILM
 ALL GRAPHICS ARE APPLIED TO INTERIOR SURFACE OF GLASS

ELEVATION

SCALE - 3" = 1'-0"



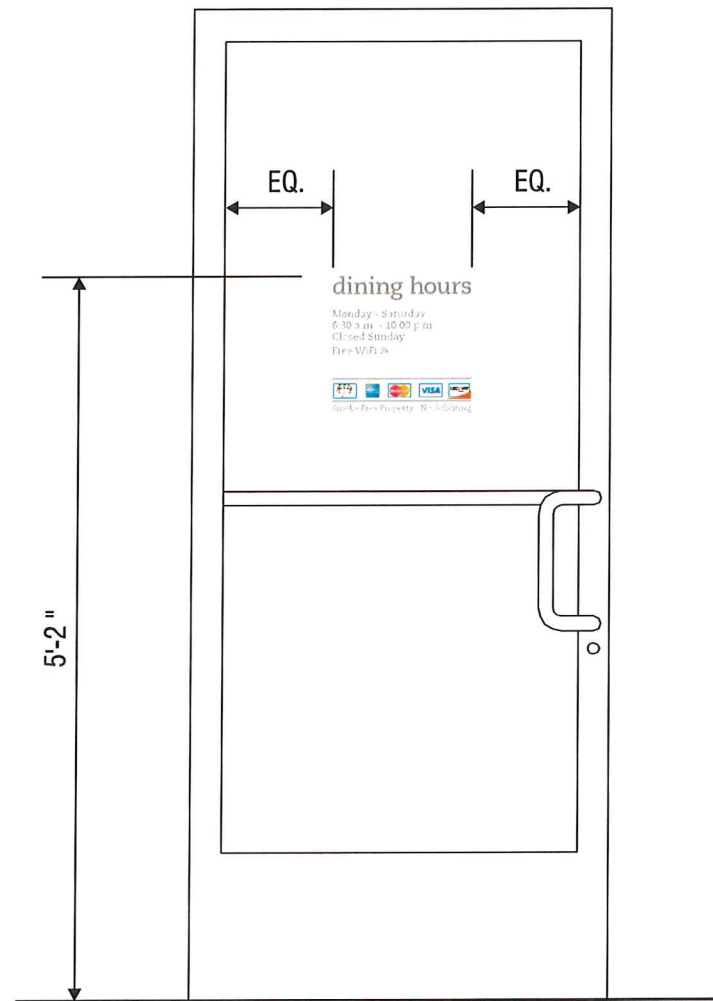
ELEVATION

SCALE - 1/8" = 1'-0"



5198 North Lake Drive
 Lake City, GA 30260
 404.361.3800
 www.claytonsigns.com

SIGN TYPE 6	VINYL WINDOW GRAPHICS	ALL ELECTRICAL SIGNS ARE 120 VOLTS UNLESS OTHERWISE INDICATED	DRAWN BY	Ben Holliday	STORE NUMBER		THIS DRAWING IS AN ORIGINAL, UNPUBLISHED DESIGN CREATED BY CLAYTON SIGNS, INC. IT IS NOT TO BE REPRODUCED, CHANGED, OR EXHIBITED TO ANYONE OUTSIDE OF YOUR COMPANY IN WHOLE OR IN PART WITHOUT WRITTEN PERMISSION FROM THE OWNER OF CLAYTON SIGNS, INC.. ANY SUCH ACTIONS MAY BE SUBJECT TO LEGAL ACTION IN A COURT OF LAW. © 2015 ALL RIGHTS RESERVED
	DRAWING FILE - CFA - MADISON, WI SIGNAGE.CDR		ACCOUNT REP.	Ben Holliday	L03601	Chick-fil-A at Madison, WI 4210 E Washington Ave Madison, WI 53704	
			DRAWING DATE	January 14, 2015			
			REVISION DATE	May 11, 2015			



ELEVATION
SCALE - 3/4" = 1'-0"

VERIFY ADDRESS BEFORE MAKING NUMBERS

1234

8" TALL ADDRESS NUMBERS
AVERY SC 900-810-0 LIGHT GREY VINYL FILM
APPLIED TO INTERIOR SURFACE OF GLASS
CAESCLIA COM 55 ROMAN FONT

ELEVATION

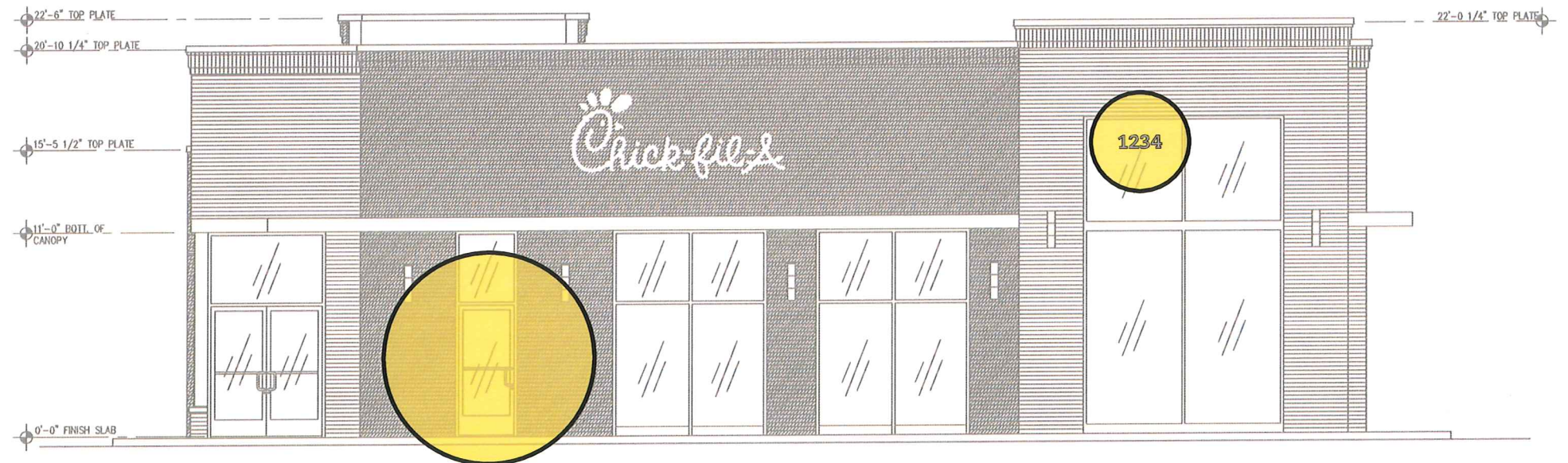
SCALE - 3" = 1'-0"



LETTERING IS WHITE VINYL FILM
CREDIT CARD LOGOS ARE PRINTED DECALS ON CLEAR FILM
ALL GRAPHICS ARE APPLIED TO INTERIOR SURFACE OF GLASS

ELEVATION

SCALE - 3" = 1'-0"



ELEVATION

SCALE - 1/8" = 1'-0"



5198 North Lake Drive
Lake City, GA 30260
404.361.3800
www.claytonsigns.com

SIGN TYPE
6

VINYL WINDOW GRAPHICS

DRAWING FILE - CFA - MADISON, WI SIGNAGE.CDR

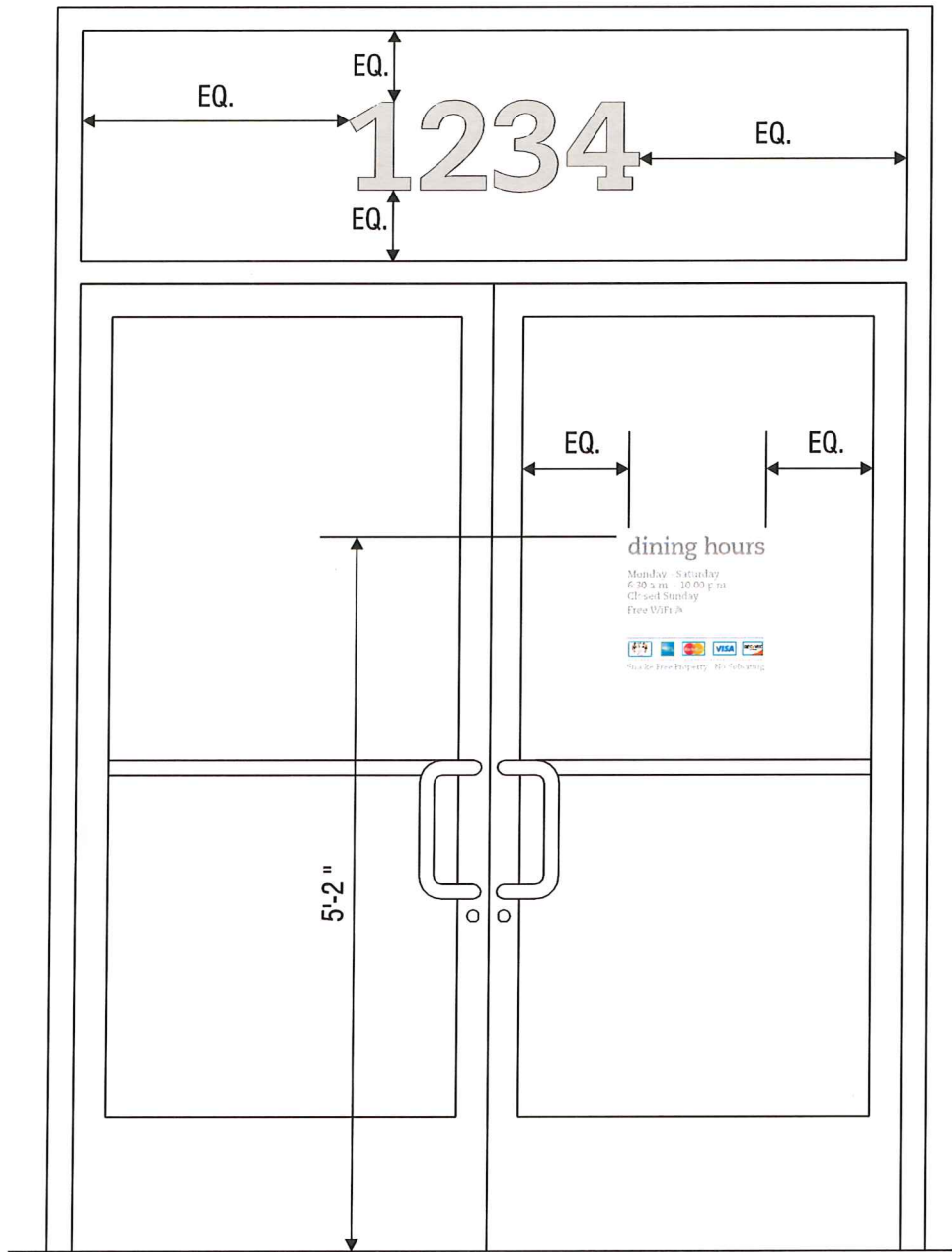
ALL ELECTRICAL
SIGNS ARE
120 VOLTS
UNLESS
OTHERWISE INDICATED

DRAWN BY	Ben Holliday
ACCOUNT REP.	Ben Holliday
DRAWING DATE	January 14, 2015
REVISION DATE	May 11, 2015

STORE NUMBER
L03601

STORE ADDRESS
Chick-fil-A at Madison, WI
4210 E Washington Ave
Madison, WI 53704

THIS DRAWING IS AN ORIGINAL, UNPUBLISHED DESIGN CREATED BY CLAYTON SIGNS, INC. IT IS NOT TO BE REPRODUCED, CHANGED, OR EXHIBITED TO ANYONE OUTSIDE OF YOUR COMPANY IN WHOLE OR IN PART WITHOUT WRITTEN PERMISSION FROM THE OWNER OF CLAYTON SIGNS, INC.. ANY SUCH ACTIONS MAY BE SUBJECT TO LEGAL ACTION IN A COURT OF LAW.
© 2015 ALL RIGHTS RESERVED



ELEVATION

SCALE - 3/4" = 1'- 0"

VERIFY ADDRESS BEFORE MAKING NUMBERS

1234

8" TALL ADDRESS NUMBERS
 AVERY SC 900-810-0 LIGHT GREY VINYL FILM
 APPLIED TO INTERIOR SURFACE OF GLASS
 CAESCILIA COM 55 ROMAN FONT

ELEVATION

SCALE - 3" = 1'- 0"



LETTERING IS WHITE VINYL FILM
 CREDIT CARD LOGOS ARE PRINTED DECALS ON CLEAR FILM
 ALL GRAPHICS ARE APPLIED TO INTERIOR SURFACE OF GLASS

ELEVATION

SCALE - 3" = 1'- 0"



ELEVATION

SCALE - 1/16" = 1'- 0"



5198 North Lake Drive
 Lake City, GA 30260
 404.361.3800
 www.claytonsigns.com

SIGN TYPE
6

VINYL WINDOW GRAPHICS

DRAWING FILE - CFA - MADISON, WI SIGNAGE.CDR

ALL ELECTRICAL
 SIGNS ARE
120 VOLTS
 UNLESS
 OTHERWISE INDICATED

DRAWN BY	Ben Holliday
ACCOUNT REP.	Ben Holliday
DRAWING DATE	January 14, 2015
REVISION DATE	May 11, 2015

STORE NUMBER
L03601

STORE ADDRESS
 Chick-fil-A at Madison, WI
 4210 E Washington Ave
 Madison, WI 53704

THIS DRAWING IS AN ORIGINAL, UNPUBLISHED DESIGN CREATED BY CLAYTON SIGNS, INC. IT IS NOT TO BE REPRODUCED, CHANGED, OR EXHIBITED TO ANYONE OUTSIDE OF YOUR COMPANY IN WHOLE OR IN PART WITHOUT WRITTEN PERMISSION FROM THE OWNER OF CLAYTON SIGNS, INC. ANY SUCH ACTIONS MAY BE SUBJECT TO LEGAL ACTION IN A COURT OF LAW.
 ©2015 ALL RIGHTS RESERVED