

## Step 4. Catch Your Bus!

### Waiting for the Bus

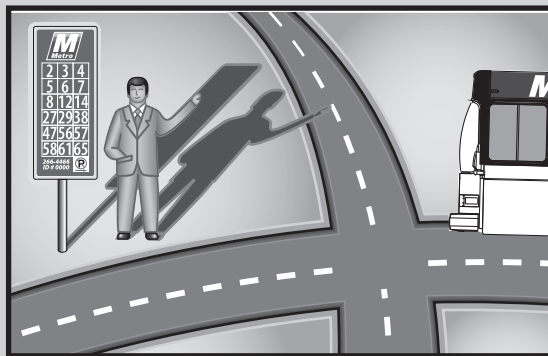
Arrive at the bus stop at least five minutes before your scheduled stop. Check for your route number on the sign. Metro has three types of bus stops diagramed below.

Make sure you are waiting at the correct location and your stop is appropriate for the direction the bus is traveling. Wave to the driver when you see your bus approaching.

Never run after a departing bus. For your safety, buses will not load passengers after they pull away from a stop or transfer point loading area.

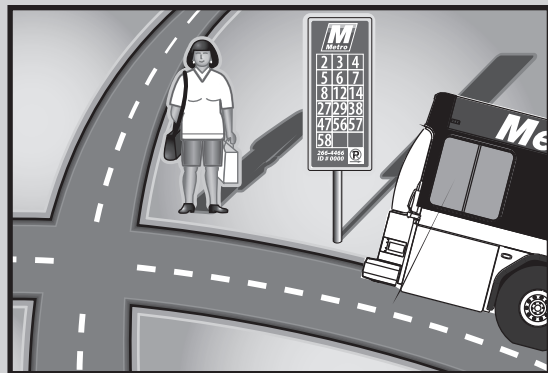
Smoking is *not* allowed inside bus shelters.

### Where to Wait!



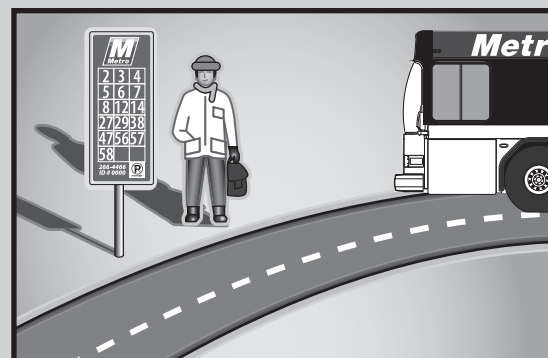
Wait at Sign!

Bus stop is past the intersection—wait at sign.



Wait at Corner!

Bus stop is before the intersection—wait at corner.  
(The back of these signs direct you to board the bus at corner.)



Wait at Sign!

Bus stop is in the middle of the block—wait at sign.

### Destination Signs

To ensure you're boarding the correct bus, check the destination sign above the windshield. The destination sign will indicate the route number and destination of a bus. If a route is traveling by way of a certain street, the "via" will flash after the route name. (For example, "North Transfer Point via Fordem".) Vias are indicated on route schedules by a dashed <sup>Route Number</sup> or dotted line. <sup>Destination</sup>

47 ARBOR HILLS

### Passenger Conduct - While You're Riding

To promote the safety and comfort of our riders, the following rules have been established:

1. Save the front seats for senior citizens and people with disabilities.
2. Refrain from smoking, eating, drinking and littering.
3. Turn off your portable radio, tape, CD player and television, or use earphones so that the sound is limited to your personal listening.
4. Do not stand in front of the standee line at the front of the bus near the drivers seat.
5. No animals are allowed aboard Metro buses, except service animals or caged pets that fit on your lap.
6. Do not bring any weapons including pistols, rifles, knives or swords on the bus.
7. Fencing foils must be sheathed in a case and left at the front of the bus with the driver.
8. If the bus is full, please keep large items on your lap.
9. Do not block the aisle or restrict passenger movement with large articles, packages, baggage, non-collapsible strollers, and baby buggies.
10. For the safety of the child and others, please remove children from stroller and fold during the ride.
11. Refrain from use of improper vulgar language, boisterous behavior or fighting.
12. Do not bring items of a dangerous nature on board the bus including: flammable liquids; dangerous, toxic or poisonous substances; storage batteries; vessels containing caustic materials, chemicals, acids or alkalis; fishing rods which are not broken down or have unsecured or exposed hooks or lures; ski poles unless secured to skis or have tip covers; sheet glass and sharp objects.
13. Do not have distracting conversations with drivers.
14. Repeated or serious incidents of inappropriate conduct by a passenger may lead to the exclusion from transit service.

For a complete copy of the Rules of Conduct and Transit Exclusion Policy, click on [mymetrobus.com](http://mymetrobus.com).

### Exiting the Bus

When exiting the bus, be alert to your destination. Use the touch strip or pull cord to signal your driver one block in advance. The driver can assist you if you are unfamiliar with the area. Remain seated until the bus comes to a complete stop. *Please exit through the rear door.*