

APPLICATION FOR
URBAN DESIGN COMMISSION
REVIEW AND APPROVAL

AGENDA ITEM # _____

Project # _____

03309

DATE SUBMITTED: <u>3/29/06</u>	Action Requested
UDC MEETING DATE: <u>4/19/06</u>	<input type="checkbox"/> Informational Presentation
	<input type="checkbox"/> Initial Approval and/or Recommendation
	<input checked="" type="checkbox"/> Final Approval and/or Recommendation

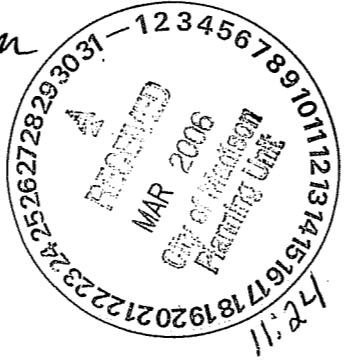
PROJECT ADDRESS: 4402 FEMRITE DRIVE

ALDERMANIC DISTRICT: 16

OWNER/DEVELOPER (Partners and/or Principals) ARCHITECT/DESIGNER/OR AGENT:
EVANGEL LIFE CENTER RON SIGGELKOW,
DIMENSION IV MADISON

CONTACT PERSON: RON SIGGELKOW, DIMENSION IV-MADISON
Address: 313 W. BELTLINE HWY
MADISON, WI 53713
Phone: 608-229-4444
Fax: 608-229-4445
E-mail address: rsiggelkow@dimensionivmadison.com

- TYPE OF PROJECT:
(See Section A for:)
- Planned Unit Development (PUD)
 - General Development Plan (GDP)
 - Specific Implementation Plan (SIP)
 - Planned Community Development (PCD)
 - General Development Plan (GDP)
 - Specific Implementation Plan (SIP)
 - Planned Residential Development (PRD)
 - New Construction or Exterior Remodeling in an Urban Design District * (A public hearing is required as well as a fee)
 - School, Public Building or Space (Fee may be required)
 - New Construction or Addition to or Remodeling of a Retail, Hotel or Motel Building Exceeding 50,000 Sq. Ft.
 - Planned Commercial Site

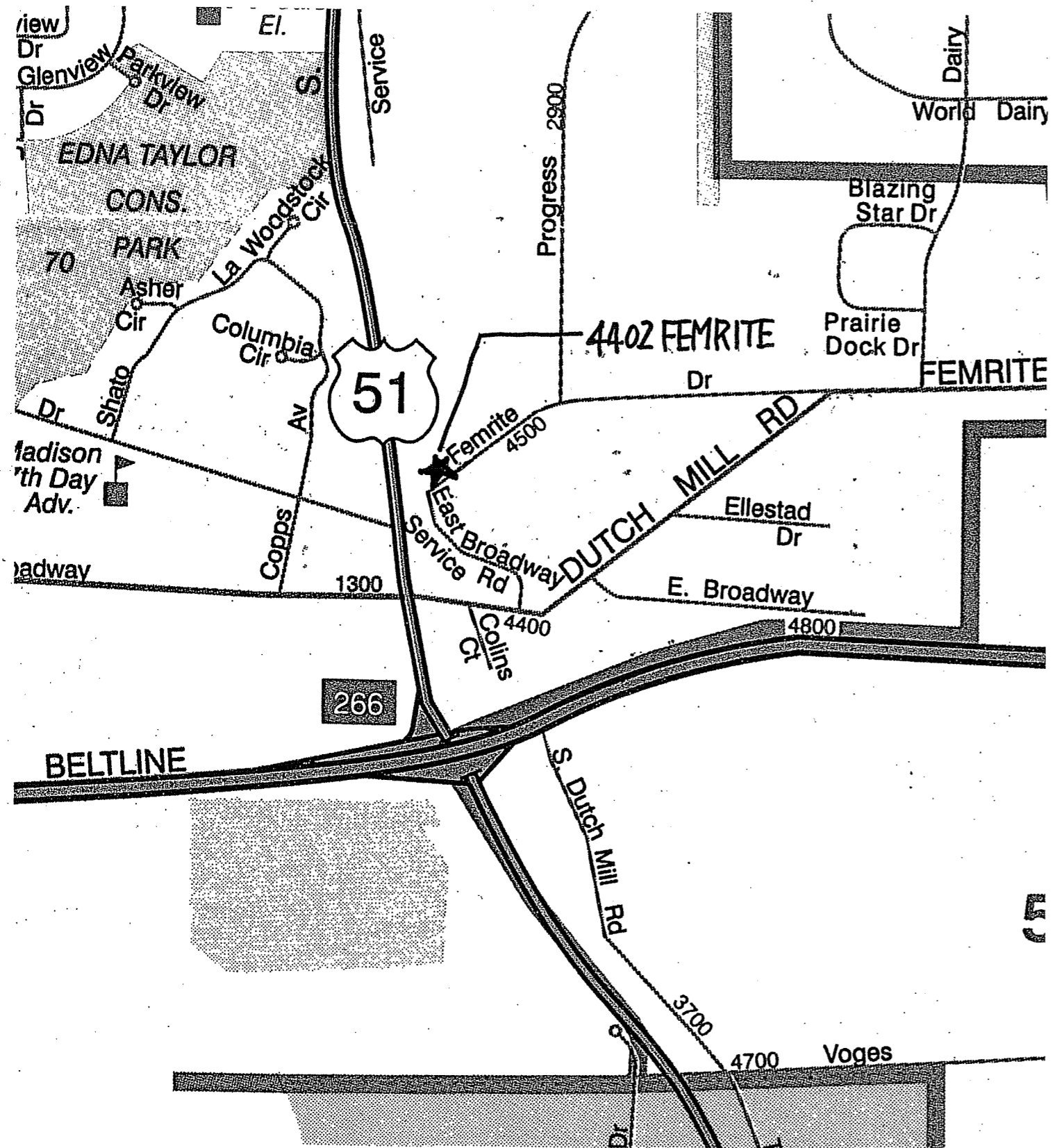


(See Section B for:)
 New Construction or Exterior Remodeling in C4 District (Fee required)

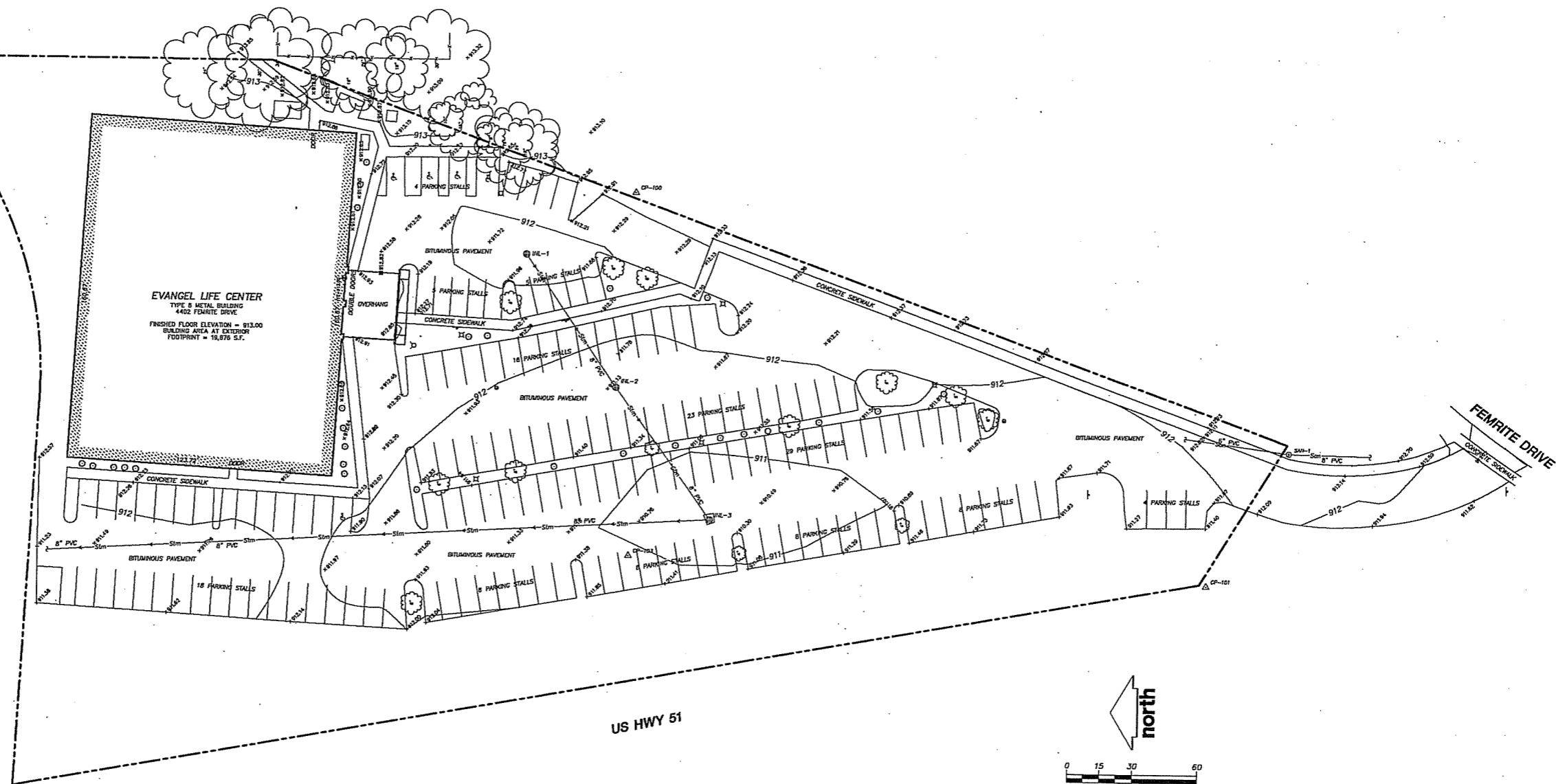
(See Section C for:)
 R.P.S.M. Parking Variance (Fee required)

(See Section D for:)
 Comprehensive Design Review* (Fee required)
 Street Graphics Variance* (Fee required)
 Other _____

*Public Hearing Required (Submission Deadline 3 Weeks in Advance of Meeting Date)



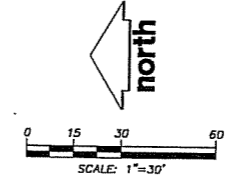
SITE LOCATOR MAP
 EVANGEL LIFE CENTER



EVANGEL LIFE CENTER
 TYPE B METAL BUILDING
 1402 FEMRITE DRIVE
 FINISHED FLOOR ELEVATION = 913.00
 BUILDING AREA AT EXISTING
 FOOTPRINT = 18,876 S.F.

US HWY 51

FEMRITE DRIVE



STORM SEWER INLETS					
INLET ID	RIM ELEVATION	INVERT	ELEVATION	PIPE SIZE	PIPE TYPE
INL-1	911.47	SW	909.47	8"	PVC
INL-2	910.93	NE	908.98	8"	PVC
		SW	908.87	8"	PVC
INL-3	909.83	NE	907.60	8"	PVC
		N	907.50	8"	PVC

CONTROL POINTS				
CONTROL POINT	NORTHING	EASTING	ELEVATION	DESCRIPTION
CP-100	10267.85	10181.18	913.36	600 NAIL
CP-101	10000.00	10000.00	910.76	600 NAIL
CP-103	102289.71	10011.10	911.18	MAG NAIL

SANITARY SEWER MANHOLES					
STRUCT. ID	RIM ELEVATION	INVERT	ELEVATION	PIPE SIZE	PIPE TYPE
SAN-1	912.69	N	902.07	6"	PVC
		S	902.04	8"	PVC

LEGEND

- △ CP-1 CONTROL POINT
- STREET SIGN
- ⊕ WATER OR GAS VALVE
- ⊕ FIRE HYDRANT
- ⊕ UTILITY MANHOLE
- ⊕ STORM SEWER INLET
- ⊕ LIGHT POLE
- ⊕ DECIDUOUS TREE
- ⊕ SPOT ELEVATION
- ▭ BUILDINGS
- EDGE OF WOODS OR SHRUBS
- PROPERTY LINE
- SANITARY SEWER
- STORM SEWER
- FENCE
- CONCRETE CURB & GUTTER
- PAVEMENT EDGE
- 750 INDEX CONTOUR
- 745 INTERMEDIATE CONTOUR

NOTES

1. TOPOGRAPHIC AND UTILITY MAP PERFORMED BY JENKINS SURVEY & DESIGN, INC. ON FEBRUARY 25TH, 2006.
2. ELEVATIONS FOR THIS SURVEY AND MAP ARE BASED ON THE FIRST FLOOR OF THE EXISTING BUILDING, ELEVATION=913.00.
3. CONTOUR INTERVAL IS ONE FOOT.
4. SUBSURFACE UTILITIES AND FEATURES SHOWN ON THIS MAP HAVE BEEN APPROXIMATED BY LOCATING SURFICIAL FEATURES AND APPURTENANCES.
5. BEFORE EXCAVATION, APPROPRIATE UTILITY COMPANIES SHOULD BE CONTACTED, FOR EXACT LOCATION OF UNDERGROUND UTILITIES, CONTACT DIGGER'S HOTLINE, AT 1.800.242.8511
6. JENKINS SURVEY AND DESIGN DOES NOT GUARANTEE THAT ALL UNDERGROUND UTILITIES ON SITE, WHETHER PUBLIC OR PRIVATE, HAVE BEEN LOCATED.
7. THE ACCURACY OF THE CONTROL POINTS AND BENCHMARKS SHOWN ON THIS MAP SHALL BE VERIFIED BEFORE BEING UTILIZED. JENKINS SURVEY AND DESIGN DOES NOT WARRANT THE ACCURACY OF THESE CONTROL POINTS AND BENCHMARKS.

REVIEW DRAWING
 NOT TO BE USED FOR CONSTRUCTION
 DATE OF ISSUE March 29, 2006

TO OBTAIN LOCATIONS OF PARTICIPANT UNDERGROUND FACILITIES BEFORE YOU DIG IN WISCONSIN

CALL DIGGERS HOTLINE
 1-800-242-8511 TOLL FREE

WISCONSIN STATE RESIDENTS MUST REGISTER BEFORE YOU DIG
 THERE IS NOW SAVE MONEY BEFORE YOU DIG

THE INFORMATION SHOWN ON THIS DRAWING CONCERNING THE TYPE AND LOCATION OF UNDERGROUND UTILITIES IS NOT GUARANTEED TO BE ACCURATE OR ALL INCLUDING. THE CONTRACTOR IS RESPONSIBLE FOR MAKING THE CONTRACTOR'S OWN DETERMINATIONS AS TO THE TYPE AND LOCATION OF UNDERGROUND UTILITIES AS MAY BE NECESSARY TO AVOID DAMAGE THEREOF.

EXISTING CONDITIONS MAP

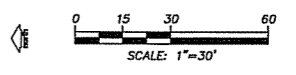
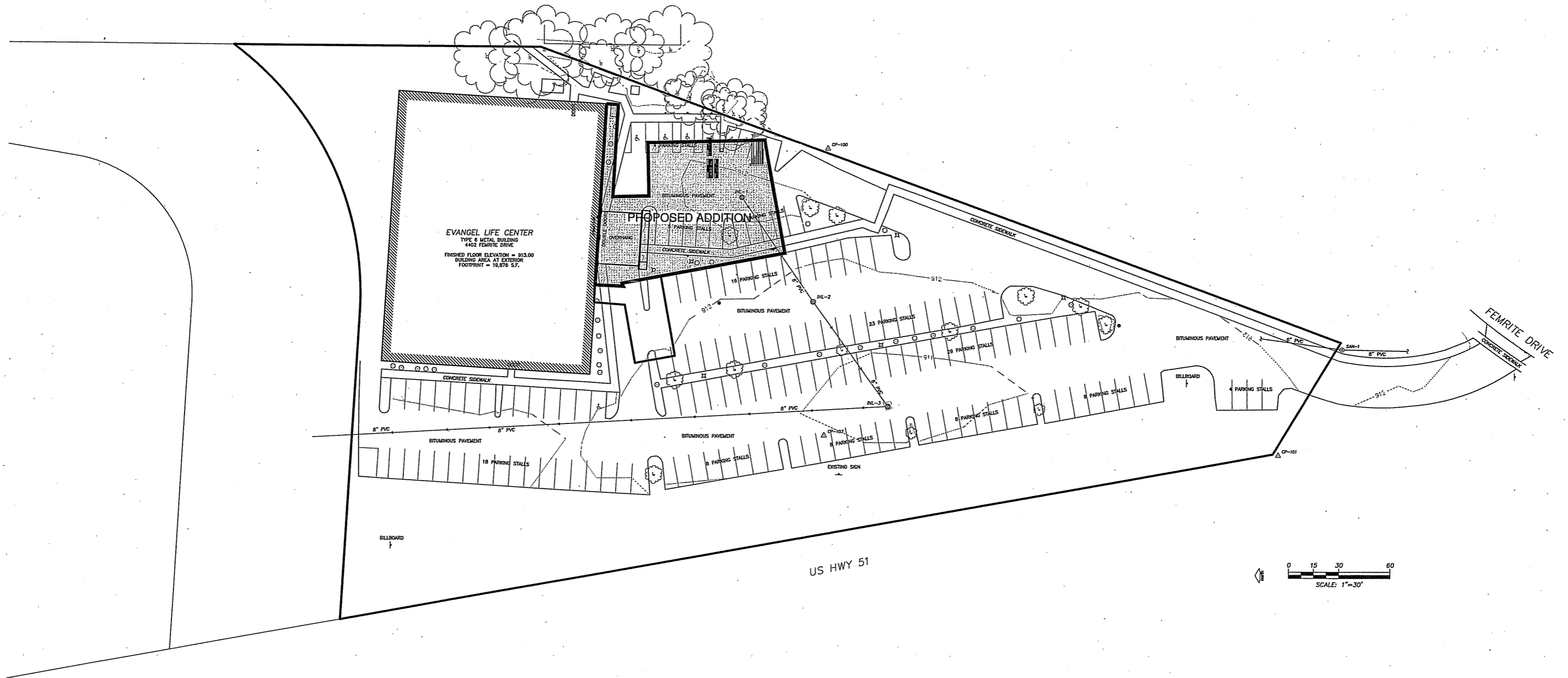
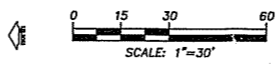
LOT TWO (2) OF CERTIFIED SURVEY MAP NO. 784-1, RECORDED AS DOCUMENT NO. 2878684, LOCATED IN THE NORTHEAST QUARTER (NE 1/4) OF THE SOUTHEAST QUARTER (SE 1/4) OF SECTION TWENTY-ONE (21), TOWN 7 NORTH (T7N), RANGE 10 EAST (R10E), CITY OF MADISON, DANE COUNTY, WISCONSIN.

PROJECT NO: 06-2280
 FILE NO: C-97
 SURVEYED BY: DSB
 F.B. NO/PG: 185/39-40
 SHEET NO: 1 OF 1

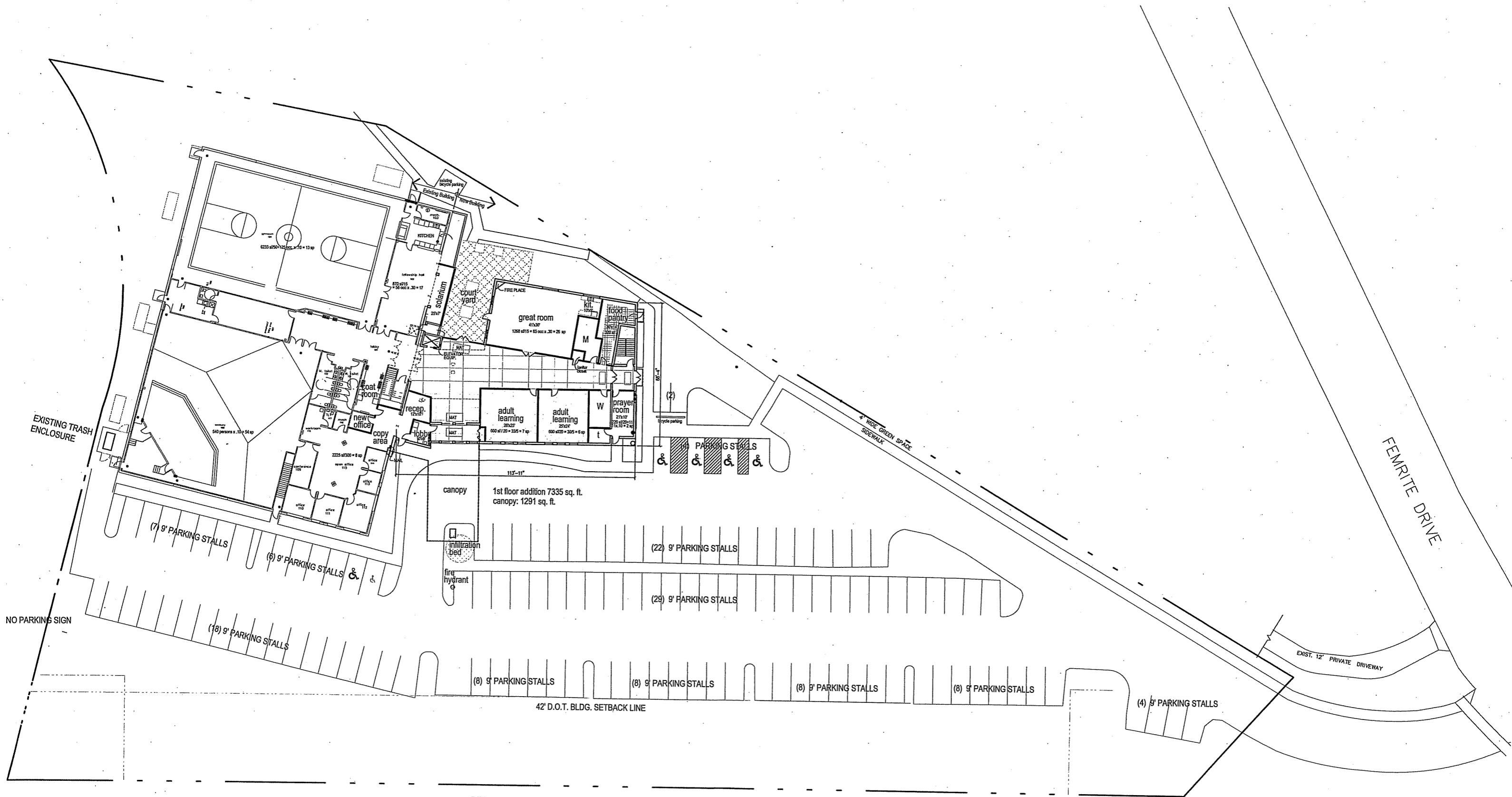
JSD Engineers & Surveyors
 Jenkins Survey & Design, Inc.
 161 HORIZON DRIVE, SUITE 101
 VERONA, WI 53593
 PHONE: (608)948-6660

SURVEYED FOR
 FISCHL CONSTRUCTION CORPORATION
 6064 MCKEE ROAD
 MADISON, WI 53719

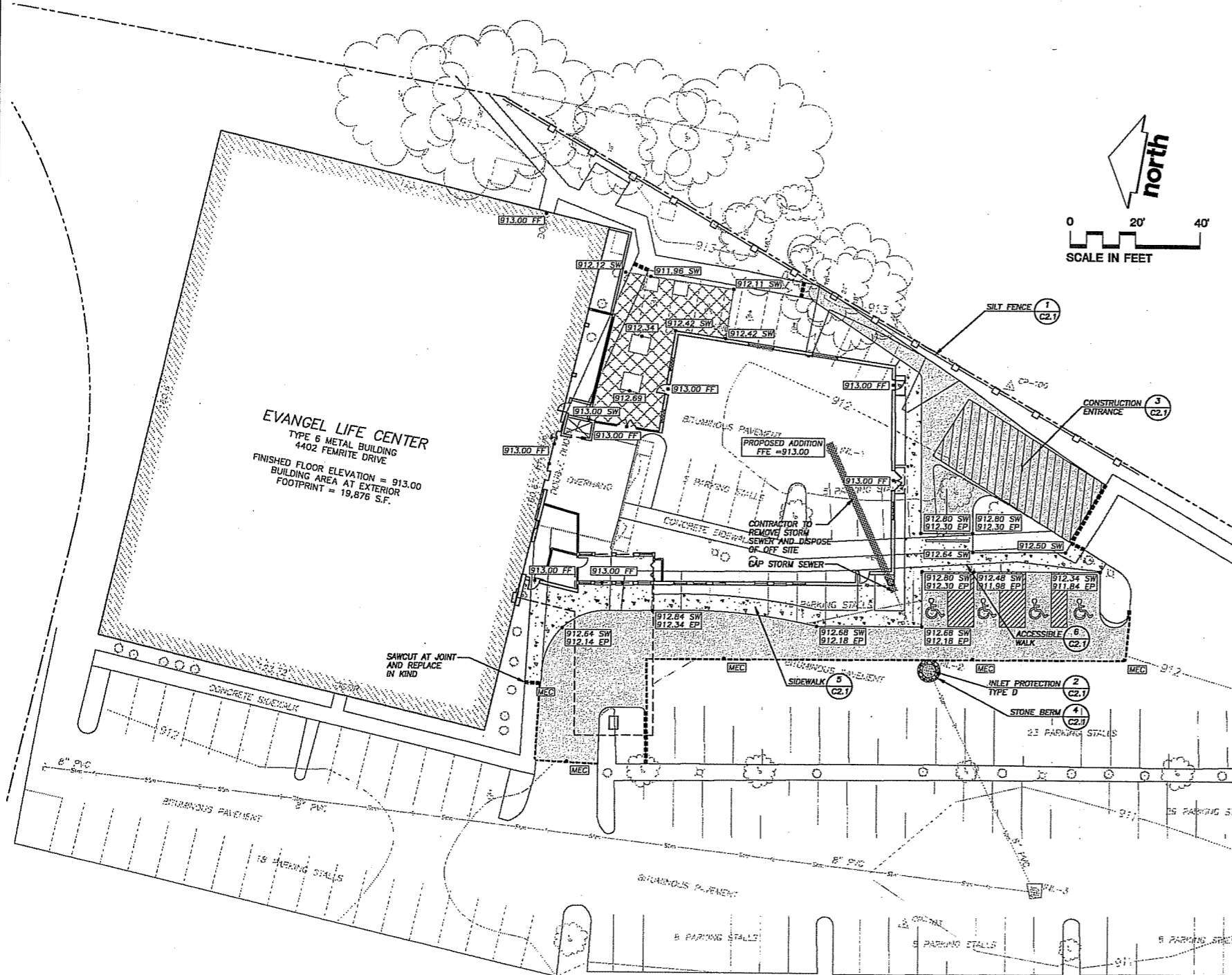
DATE	03-27-2006
DRAWN BY	DSB
CHECKED BY	
APPROVED BY	DMJ
DATE	03-29-2006
DRAWING	4:\2006\082800\DWG\082806COND.DWG
REVISION	
DESCRIPTION	
DATE	
BY	



**ADDITION OVERLAY
EVANGEL LIFE CENTER
4402 FEMRITE DRIVE**



North **SITE PLAN**
 0 5 10 25ft



EVANGEL LIFE CENTER
 TYPE 6 METAL BUILDING
 4402 FEMRITE DRIVE
 FINISHED FLOOR ELEVATION = 913.00
 BUILDING AREA AT EXTERIOR
 FOOTPRINT = 19,876 S.F.

LEGEND (PROPOSED)

- PROPERTY LINE
- BUILDING LINE
- 911--- 1 FOOT CONTOUR
- 910--- 5 FOOT CONTOUR
- SAW CUT
- CONCRETE PAVEMENT
- BITUMINOUS PAVEMENT (E-0.3)
- PAVEMENT STRIPING
- 1047.00 SPOT ELEVATION
- EP EDGE OF PAVEMENT
- SW EDGE OF PAVEMENT
- MEC MATCH EXISTING CONDITIONS

GENERAL NOTES

1. REFER TO SHEET C1.0 FOR EXISTING CONDITIONS NOTES AND LEGEND.
2. NO SITE GRADING OUTSIDE OR DOWNSLOPE OF PROPOSED SILT FENCE LOCATION.
3. ALL WORK IN THE ROW AND PUBLIC EASEMENTS SHALL BE IN ACCORDANCE WITH THE CITY OF MADISON STANDARD SPECIFICATIONS FOR PUBLIC WORKS CONSTRUCTION, LATEST EDITION.

CONSTRUCTION SITE EROSION CONTROL REQUIREMENTS

1. ALL EROSION CONTROL MEASURES SHALL BE CONSTRUCTED AND MAINTAINED BY THE CONTRACTOR IN ACCORDANCE WITH THE STORM WATER MANAGEMENT TECHNICAL STANDARDS (REFERRED TO AS BMP'S). IT IS THE CONTRACTOR'S RESPONSIBILITY TO OBTAIN A COPY OF THESE STANDARDS.
2. INSTALL EROSION CONTROL MEASURES PRIOR TO ANY SITE WORK, INCLUDING GRADING OR DISTURBANCE OF EXISTING SURFACE MATERIALS AS SHOWN ON PLAN. MODIFICATIONS TO SEDIMENT CONTROL DESIGN MAY BE CONDUCTED TO MEET UNFORESEEN FIELD CONDITIONS IF MODIFICATIONS CONFORM TO BMP'S.
3. INSPECTIONS AND MAINTENANCE OF ALL EROSION CONTROL MEASURES SHALL BE ROUTINE (ONCE PER WEEK MINIMUM) TO ENSURE PROPER FUNCTION OF EROSION CONTROLS AT ALL TIMES. EROSION CONTROL MEASURES ARE TO BE IN WORKING ORDER AT THE END OF EACH WORK DAY.
4. INSPECT EROSION CONTROL MEASURES AFTER EACH 1/2" OR GREATER RAINFALL. REPAIR ANY DAMAGE OBSERVED DURING THE INSPECTION.
5. EROSION CONTROL MEASURES SHALL BE REMOVED ONLY AFTER SITE CONSTRUCTION IS COMPLETE WITH ALL SOIL SURFACES HAVING AN ESTABLISHED VEGETATIVE COVER.
6. INSTALL A TRACKING PAD, 50' LONG AND NO LESS THAN 12" THICK BY USE OF 3" CLEAR STONE. TRACKING PADS ARE TO BE MAINTAINED BY THE CONTRACTOR IN A CONDITION WHICH WILL PREVENT THE TRACKING OF MUD OR DRY SEDIMENT ONTO THE ADJACENT PUBLIC STREETS AFTER EACH WORKING DAY OR MORE FREQUENTLY AS REQUIRED BY THE CITY OF MADISON.
7. INSTALL EROSION CONTROLS ON THE DOWNSTREAM SIDE OF STOCKPILES.
8. INSTALL CHECK DAMS WITHIN DRAINAGE DITCHES IN ACCORDANCE WITH BMP'S.
9. EROSION CONTROL FOR UTILITY CONSTRUCTION (STORM SEWER, SANITARY SEWER, WATER MAIN, ETC.):
 A. PLACE EXCAVATED TRENCH MATERIAL ON THE HIGH SIDE OF THE TRENCH.
 B. BACKFILL, COMPACT, AND STABILIZE THE TRENCH IMMEDIATELY AFTER PIPE CONSTRUCTION.
 C. DISCHARGE TRENCH WATER INTO A SEDIMENTATION BASIN OR FILTERING TANK IN ACCORDANCE WITH BMP'S PRIOR TO RELEASE INTO THE STORM SEWER, RECEIVING STREAM, OR DRAINAGE DITCH.
10. STONE CHECK DAMS SHALL BE PLACED IN FRONT OF SILT FENCING IN ANY LOW AREA.
11. APPLY ANIONIC POLYMER TO DISTURBED AREAS IF EROSION BECOMES PROBLEMATIC.
12. ADDITIONAL EROSION CONTROL MEASURES, AS REQUESTED BY STATE INSPECTORS, LOCAL INSPECTORS, AND/OR ENGINEER SHALL BE INSTALLED WITHIN 24 HOURS.
13. ALL SLOPES EXCEEDING 20% SHALL BE STAKED WITH EROSION CONTROL FABRIC. SEE SEEDING & GRADING NOTE 3.

PAVING NOTES

1. ALL PAVING SHALL CONFORM TO "STATE OF WISCONSIN STANDARD SPECIFICATIONS FOR HIGHWAY & STRUCTURE CONSTRUCTION," APPLICABLE TO THE CITY OF MADISON ORDINANCES.
2. MINIMUM PAVEMENT DESIGN TO BE DETERMINED BY GEOTECHNICAL ENGINEER BASED UPON GEOTECHNICAL REPORT.

GRADING AND SEEDING NOTES

1. ALL DISTURBED AREAS SHALL BE SEEDED AND MULCHED IMMEDIATELY FOLLOWING GRADING ACTIVITIES. SEED MIX TO BE IN ACCORDANCE WITH CITY OF MADISON REQUIREMENTS.
2. CONTRACTOR TO USE A SEEDING RATE OF 2 LBS. PER 1000 S.F. FOR TURF AREAS.
3. ALL SLOPES EXCEEDING 5:1, CONVEYING STORMWATER RUNOFF SHALL BE STABILIZED WITH CLASS II, TYPE B EROSION MATING OR APPLICATION OF A WOOD APPROVED POLYMER SOIL STABILIZATION TREATMENT OR A COMBINATION THEREOF, AS REQUIRED. CONTRACTOR SHALL PROVIDE PRODUCT SPECIFICATIONS TO PROJECT ENGINEER FOR APPROVAL.
4. ALL PROPOSED GRADES SHOWN ARE FINISHED GRADES. CONTRACTOR SHALL VERIFY ALL GRADES, MAKE SURE ALL AREAS DRAIN PROPERLY AND SHALL REPORT ANY DISCREPANCIES TO THE ENGINEER PRIOR TO CONSTRUCTION.
5. CONTRACTOR SHALL PROTECT ADJACENT PROPERTIES WITH SILT FENCING FOR EROSION CONTROL UNTIL CONSTRUCTION IS COMPLETED.
6. CONTRACTOR SHALL SCARIFY ALL COMPACTED PERVIOUS AREAS PRIOR TO SEEDING AND MULCHING.
7. CONTRACTOR SHALL CHISEL-PLow OR DEEP TILL WITH DOUBLE TINES THE SWALES AND DETENTION AREAS JUST PRIOR TO SEEDING TO PROMOTE INFILTRATION.
8. CONTRACTOR SHALL WATER ALL NEWLY SEEDED AREAS DURING THE SUMMER MONTHS WHENEVER THERE IS A 7 DAY LAPSE WITH NO SIGNIFICANT RAINFALL.
9. PROPOSED DRAINAGE SWALES TO BE SEEDED USING A WET-DETENTION BASIN MIX FOR CHANNEL SIDESLOPES UNLESS NOTED OTHERWISE.
10. CONTRACTOR TO LINE DRAINAGE SWALES WITH CLASS II, TYPE B EROSION MAT.

JSD • Engineers • Surveyors
Jenkins Survey & Design, Inc.

• SURVEYING AND MAPPING
 • CIVIL ENGINEERING
 • TRANSPORTATION ENGINEERING
 • PLANNING & DEVELOPMENT
 • CONSTRUCTION MANAGEMENT

MADISON REGIONAL OFFICE
 161 Horizon Drive
 Suite 101
 Verona, Wisconsin 53593
 (608) 848-5060

MILWAUKEE REGIONAL OFFICE
 N22 W22931 Nancy Court
 Suite 3
 Waukesha, Wisconsin 53186
 (262) 513-0666

Although every effort has been made in preparing these plans and checking them for accuracy, the contractor and subcontractors must check all details and dimensions of their trade and be responsible for the same.

These plans and designs are copyright protected and may not be used in whole or in part without the written consent of Jenkins Survey and Design, Inc.

ITEM	DATE
Drawn: ALH	03-27-06
Checked: WFW	03-
Approved: DMJ	03-
City of Madison Submittal	03-29-06
JSD Project Number	06-2280

**DIMENSION IV
 MADISON**

Architecture
 Engineering
 Interior Design
 313 West Bellvue Hwy., Suite 161
 Madison, WI 53713
 phone (608) 229-4444 fax (608) 229-4445



**EVANGEL LIFE
 CENTER ADDITION**
 4402 FEMRITE DRIVE
 MADISON, WI

DATE OF ISSUE: ????

REVISIONS:
 A. **PRELIMINARY**
NOT FOR CONSTRUCTION

PROJECT NO: ????

**EROSION CONTROL
 AND GRADING PLAN**

C2.0

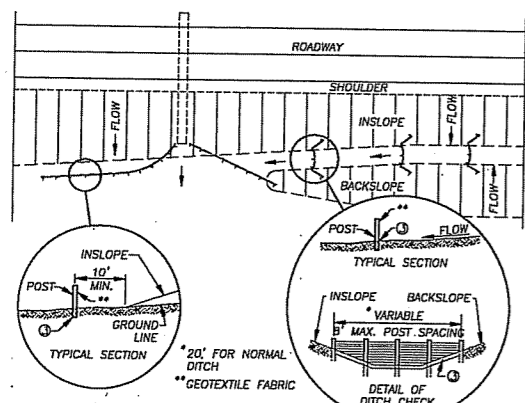
US HWY 51

REVIEW DRAWING
 NOT TO BE USED FOR CONSTRUCTION
 DATE OF ISSUE March 29, 2006

TO OBTAIN LOCATIONS OF PARTICIPANT
 UNDERGROUND UTILITIES, CONTACT
 DUC BY WISCONSIN

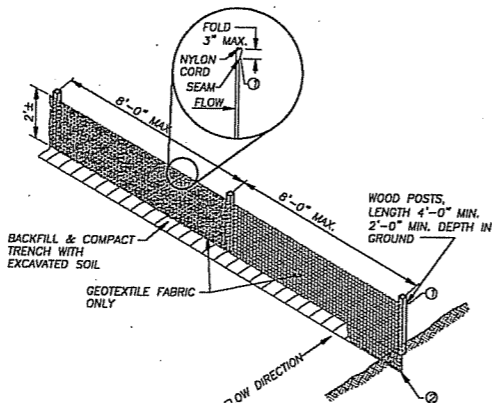
CALL DIGGERS HOTLINE
 1-800-242-8511 TOLL FREE
 WISCONSIN STATE SERVICE REPRESENTATIVE NUMBER
 THREE (3) HOURS DAILY BEFORE YOU DIG

THE INFORMATION SHOWN ON THIS DRAWING
 CONCERNING THE LOCATION OF UNDER-
 GROUND UTILITIES IS NOT GUARANTEED TO BE
 ACCURATE OR ALL ENCLINING. THE CONTRACTOR IS
 RESPONSIBLE FOR VERIFYING THE CONTRACTOR'S OWN
 DETERMINATIONS AS TO THE TYPE AND LOCATION OF
 UNDERGROUND UTILITIES AS MAY BE NECESSARY TO
 AVOID DAMAGE THEREOF.



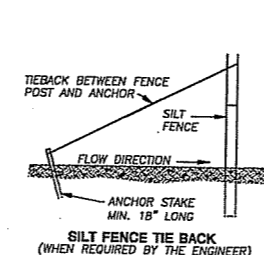
PLAN VIEW
TYPICAL APPLICATIONS OF SILT FENCE

1
C2.1
SILT FENCE
N.T.S.

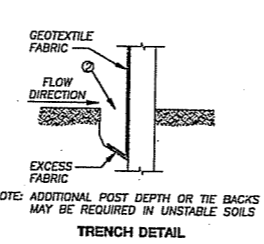


DETAIL OF CONSTRUCTION NOT SHOWN ON THIS DRAWING SHALL CONFORM TO THE PERTINENT REQUIREMENTS OF THE STANDARD SPECIFICATIONS AND APPLICABLE SPECIAL PROVISIONS.

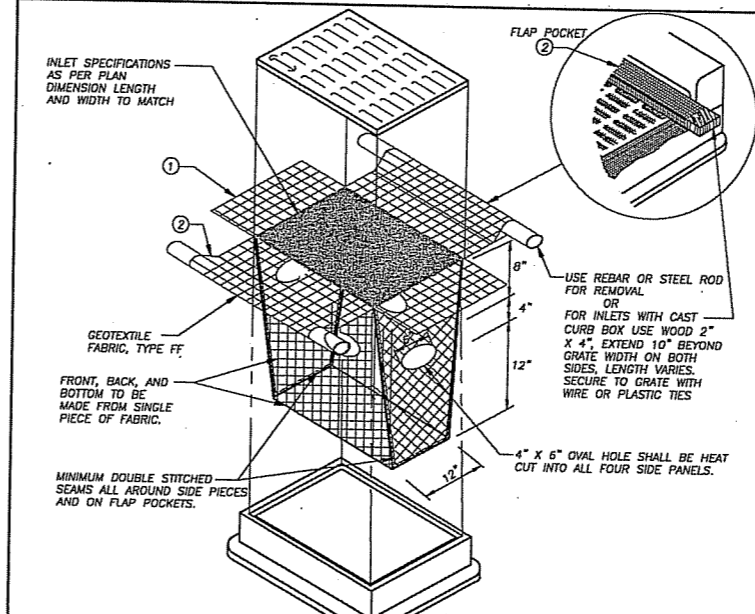
- HORIZONTAL BRACE WITH 2" x 4" WOODEN FRAME OR EQUIVALENT AT TOP OF POSTS.
- TRENCH SHALL BE A MINIMUM OF 4" WIDE AND 6" DEEP TO BURY AND ANCHOR THE GEOTEXTILE FABRIC, FOLD MATERIAL TO FIT TRENCH AND BACKFILL AND COMPACT TRENCH WITH EXCAVATED SOIL.
- WOOD POSTS SHALL BE A MINIMUM SIZE OF 1 1/8" x 1 1/8" OF OAK OR HICKORY.
- SILT FENCE TO EXTEND ACROSS THE TOP OF PIPE.



SILT FENCE TIE BACK
(WHEN REQUIRED BY THE ENGINEER)



TRENCH DETAIL

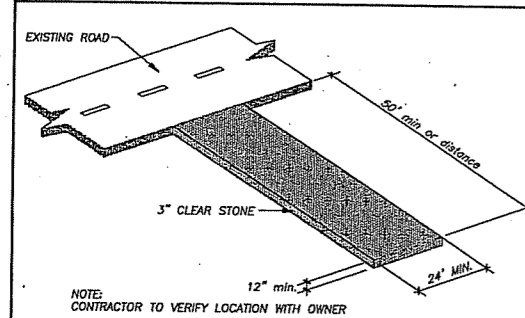


2
C2.1
INLET PROTECTION, TYPE D
N.T.S.

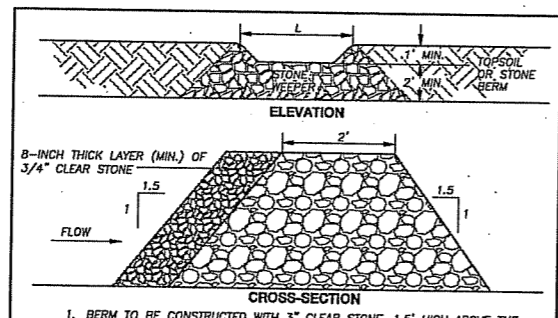
GENERAL NOTES
INLET PROTECTION DEVICES SHALL BE MAINTAINED OR REPLACED AT THE DIRECTION OF THE ENGINEER.
MANUFACTURED ALTERNATIVES APPROVED AND LISTED ON THE DEPARTMENT'S EROSION CONTROL PRODUCT ACCEPTABILITY LIST MAY BE SUBSTITUTED.
WHEN REMOVING OR MAINTAINING INLET PROTECTION, CARE SHALL BE TAKEN SO THAT THE SEDIMENT TRAPPED ON THE GEOTEXTILE FABRIC DOES NOT FALL INTO THE INLET. ANY MATERIAL FALLING INTO THE INLET SHALL BE REMOVED IMMEDIATELY.

- FINISHED SIZE, INCLUDING FLAP POCKETS WHERE REQUIRED, SHALL EXTEND A MINIMUM OF 10" AROUND THE PERIMETER TO FACILITATE MAINTENANCE OR REMOVAL.
- FLAP POCKETS SHALL BE LARGE ENOUGH TO ACCEPT WOOD 2X4.

INSTALLATION NOTES
DO NOT INSTALL INLET PROTECTION TYPE D IN INLETS SHALLOWER THAN 30", MEASURED FROM THE BOTTOM OF THE INLET TO THE TOP OF THE GRATE.
TRIM EXCESS FABRIC IN THE FLOW LINE TO WITHIN 3" OF THE GRATE.
THE INSTALLED BAG SHALL HAVE A MINIMUM SIDE CLEARANCE, BETWEEN THE INLET WALLS AND THE BAG, MEASURED AT THE BOTTOM OF THE OVERFLOW HOLES, OF 3". WHERE NECESSARY THE CONTRACTOR SHALL CINCH THE BAG, USING PLASTIC ZIP TIES, TO ACHIEVE THE 3" CLEARANCE. THE TIES SHALL BE PLACED AT A MAXIMUM OF 4" FROM THE BOTTOM OF THE BAG.

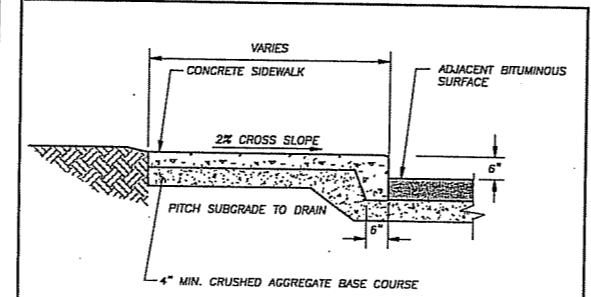


3
C2.1
CONSTRUCTION ENTRANCE
N.T.S.

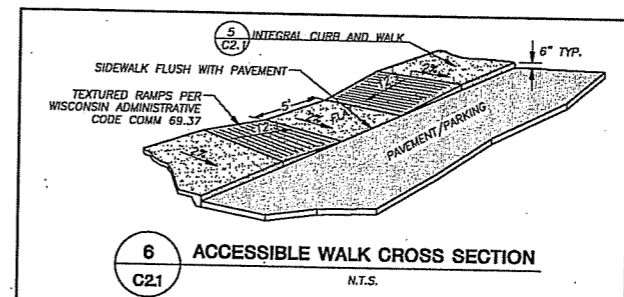


4
C2.1
STONE BERM
N.T.S.

- BERM TO BE CONSTRUCTED WITH 3" CLEAR STONE, 1.5' HIGH ABOVE THE SWALE BOTTOM AND LEVEL WITH THE CREST.
- EXTEND BERM ACROSS SWALE TO MEET SWALE SIDE SLOPES GRADES. WHERE SWALE IS LESS THAN 1.5' DEEP, REDUCE BERM HEIGHT TO 1.0', WITH A 4' LENGTH.



5
C2.1
SIDEWALK CROSS SECTION
N.T.S.



6
C2.1
ACCESSIBLE WALK CROSS SECTION
N.T.S.

JSD - Engineers - Surveyors
Jenkins Survey & Design, Inc.

- SURVEYING AND MAPPING
- CIVIL ENGINEERING
- TRANSPORTATION ENGINEERING
- PLANNING & DEVELOPMENT
- CONSTRUCTION MANAGEMENT

MADISON REGIONAL OFFICE
161 Horizon Drive
Suite 101
Verona, Wisconsin 53593
(608) 848-5060

MILWAUKEE REGIONAL OFFICE
N22 W22931 Nancy Court
Suite 3
Waukesha, Wisconsin 53186
(262) 513-0666

Although every effort has been made in preparing these plans and checking them for accuracy, the contractor and subcontractors must check all details and dimensions of their trade and be responsible for the same.
These plans and designs are copyright protected and may not be used in whole or in part without the written consent of Jenkins Survey and Design, Inc.

ITEM	DATE
Drawn: ALH	03-27-06
Checked: WFW	03--
Approved: DMJ	03--
City of Madison Submittal	03-29-06
JSD Project Number	06-2280

**DIMENSION IV
MADISON**

Architecture
Engineering
Interior Design

313 West Beltline Hwy., Suite 161
Madison, WI 53713
phone (608) 229-4444 fax (608) 229-4445

FISCHL
Construction Corporation

**EVANGEL LIFE
CENTER ADDITION**

4402 FEMRITE DRIVE
MADISON, WI

REVIEW DRAWING
NOT TO BE USED FOR CONSTRUCTION
DATE OF ISSUE March 29, 2006

DATE OF ISSUE: ???/??/??

REVISIONS:
PRELIMINARY
NOT FOR CONSTRUCTION

PROJECT NO: ???

DETAILS
C2.1

JSD - Engineers - Surveyors
Jenkins Survey & Design, Inc.

- SURVEYING AND MAPPING
- CIVIL ENGINEERING
- TRANSPORTATION ENGINEERING
- PLANNING & DEVELOPMENT
- CONSTRUCTION MANAGEMENT

MADISON REGIONAL OFFICE
 161 Horizon Drive
 Suite 101
 Verona, Wisconsin 53593
 (608) 848-5060

MILWAUKEE REGIONAL OFFICE
 N22 W22931 Nancy Court
 Suite 3
 Waukesha, Wisconsin 53186
 (262) 513-0666

Although every effort has been made in preparing these plans and checking them for accuracy, the contractor and subcontractors must check all details and dimensions of their trade and be responsible for the same.

These plans and designs are copyright protected and may not be used in whole or in part without the written consent of Jenkins Survey and Design, Inc.

ITEM	DATE
Drawn: ALH	03-27-06
Checked: WFW	03-
Approved: DMJ	03-
City of Madison Submitted	03-29-06
JSD Project Number	06-2280

DIMENSION IV MADISON

Architecture
 Engineering
 Interior Design

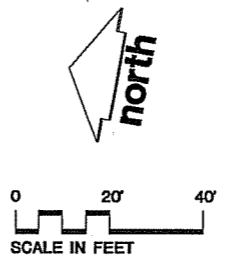
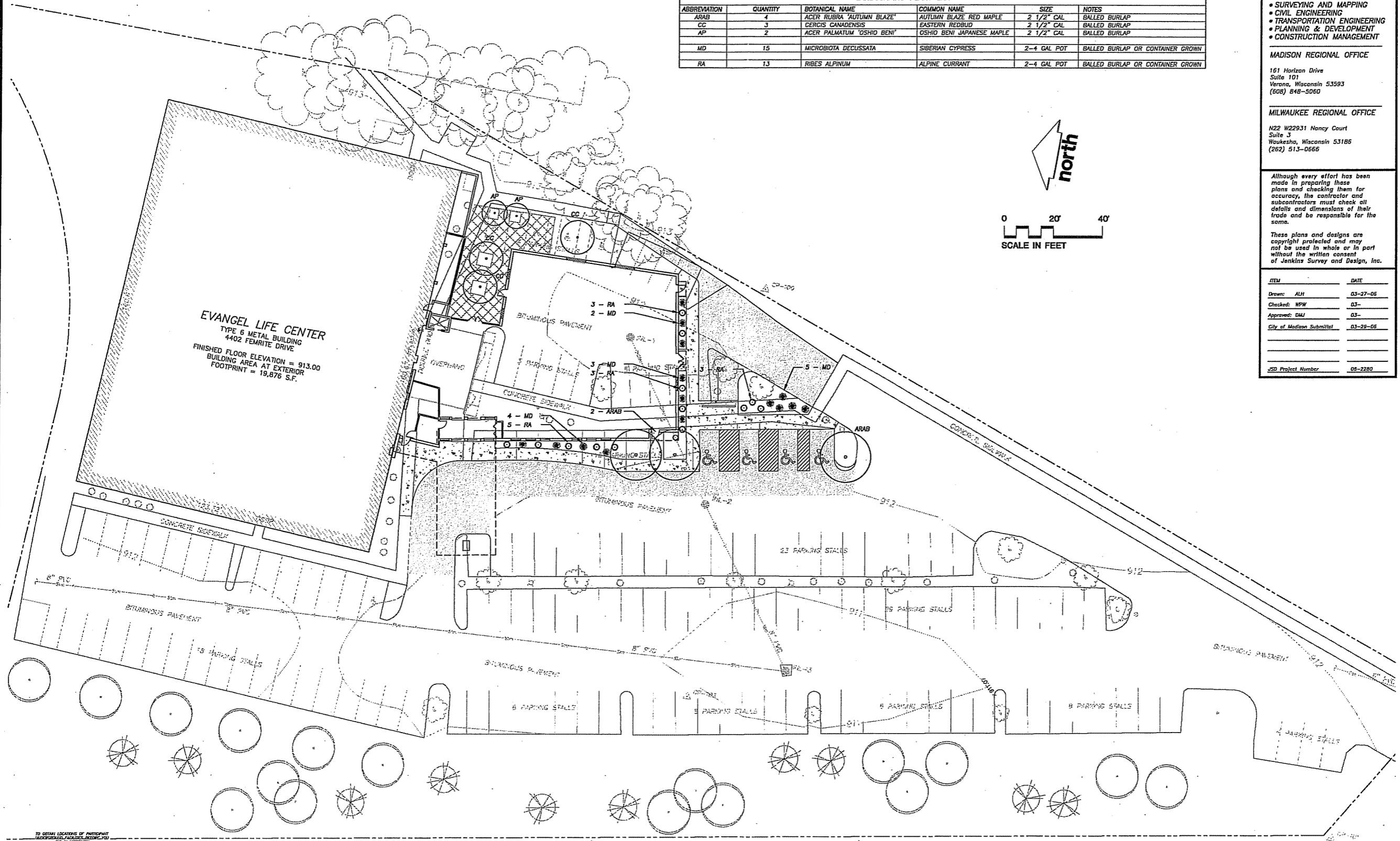
313 West Beltline Hwy., Suite 161
 Madison, WI 53713
 phone (608) 229-4444 fax (608) 229-4445



EVANGEL LIFE CENTER ADDITION

4402 FEMRITE DRIVE
MADISON, WI

ABBREVIATION	QUANTITY	BOTANICAL NAME	COMMON NAME	SIZE	NOTES
ARAB	4	ACER RUBRA 'AUTUMN BLAZE'	AUTUMN BLAZE RED MAPLE	2 1/2" CAL	BALLED BURLAP
CC	3	CERCIS CANADENSIS	EASTERN REDBUD	2 1/2" CAL	BALLED BURLAP
AP	2	ACER PALMATUM 'OSHIO BENI'	OSHIO BENI JAPANESE MAPLE	2 1/2" CAL	BALLED BURLAP
MD	15	MICROBIOTA DECUSSATA	SIBERIAN CYPRESS	2-4 GAL POT	BALLED BURLAP OR CONTAINER GROWN
RA	13	RIBES ALPINUM	ALPINE CURRANT	2-4 GAL POT	BALLED BURLAP OR CONTAINER GROWN



TO OBTAIN LOCATIONS OF UNDERGROUND UTILITIES, CONTACT THE CITY OF MADISON.

CALL DIGGERS HOTLINE
 1-800-242-8511 TOLL FREE

NEEDING BLUE PRINTS? REPRODUCTION SERVICE AVAILABLE
 THREE TO FIVE BUSINESS DAYS DELIVERY

THE INFORMATION SHOWN ON THIS DRAWING CONCERNING THE LOCATION OF UNDERGROUND UTILITIES IS NOT GUARANTEED TO BE ACCURATE ON ALL OCCASIONS. THE CONTRACTOR IS RESPONSIBLE FOR VERIFYING THE CONTRACTOR'S OWN INFORMATION AS TO THE TYPE AND LOCATION OF UNDERGROUND UTILITIES AS MAY BE NECESSARY TO AVOID DAMAGE THEREBY.

REVIEW DRAWING
 NOT TO BE USED FOR CONSTRUCTION
 DATE OF ISSUE March 29, 2006

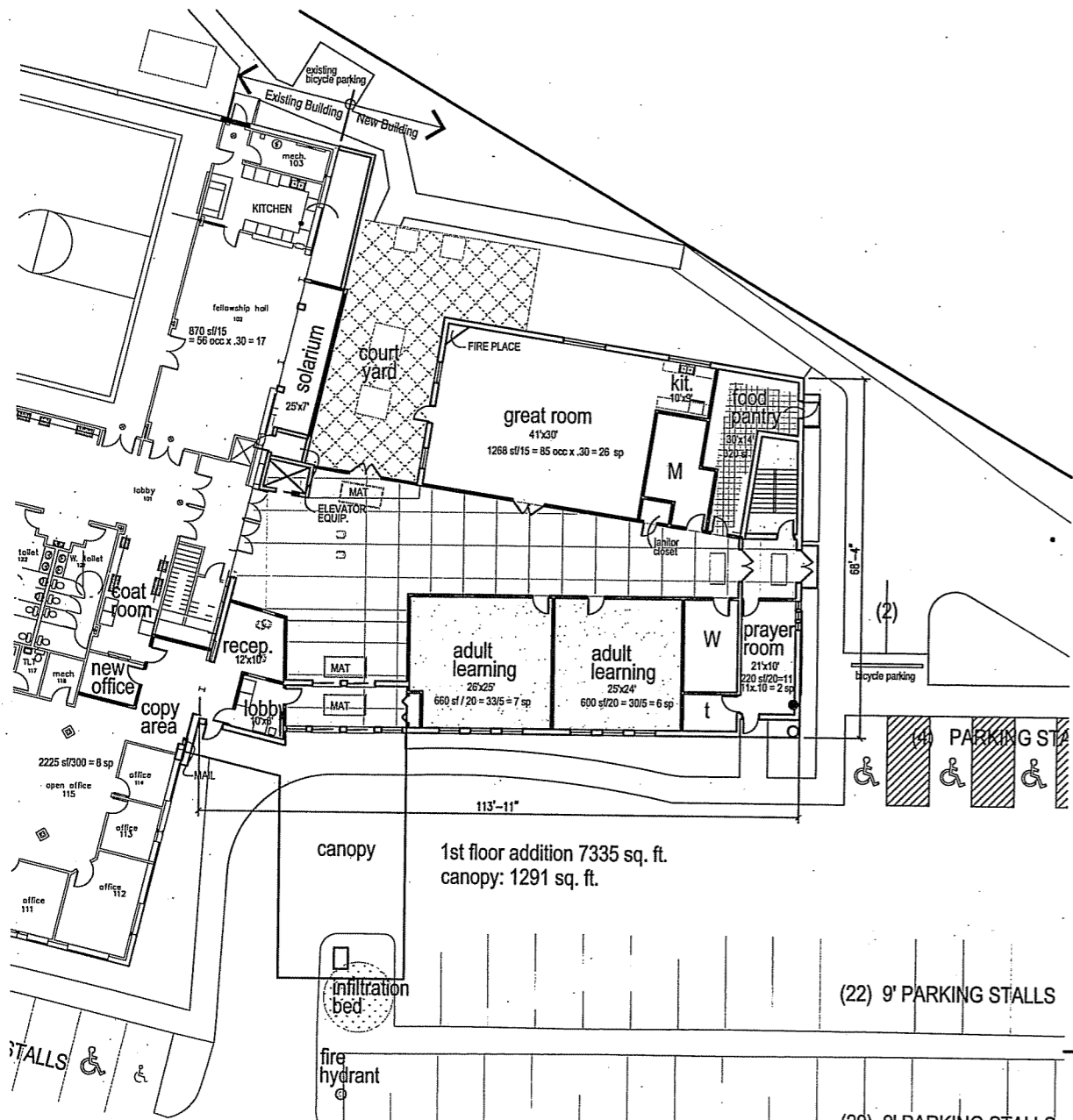
DATE OF ISSUE: ????

REVISIONS:
PRELIMINARY
NOT FOR CONSTRUCTION

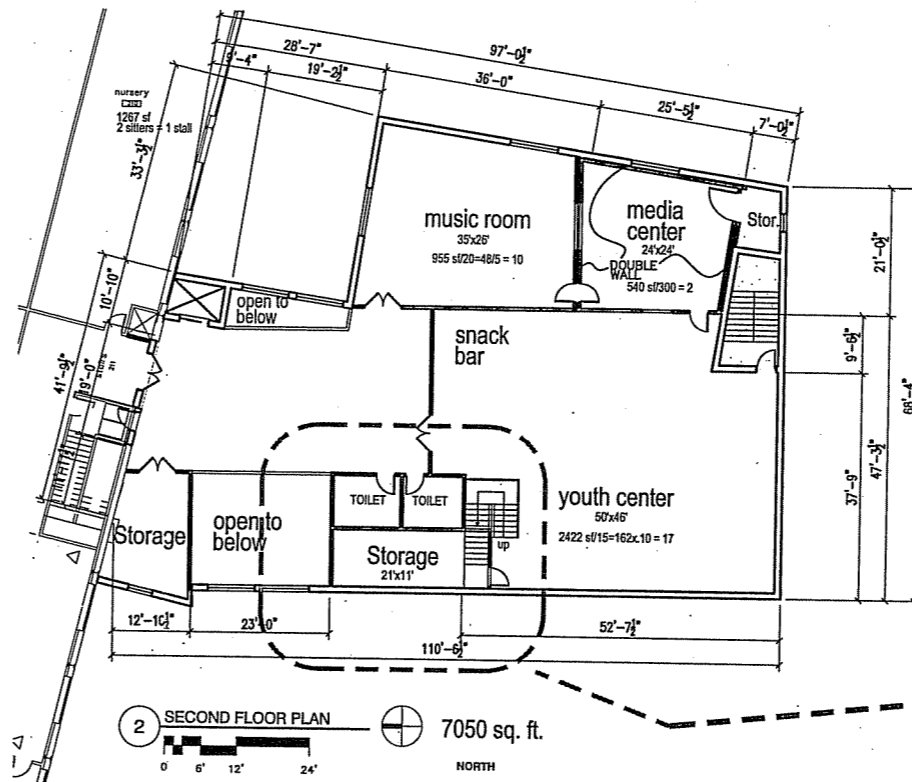
PROJECT NO: ????

LANDSCAPING PLAN

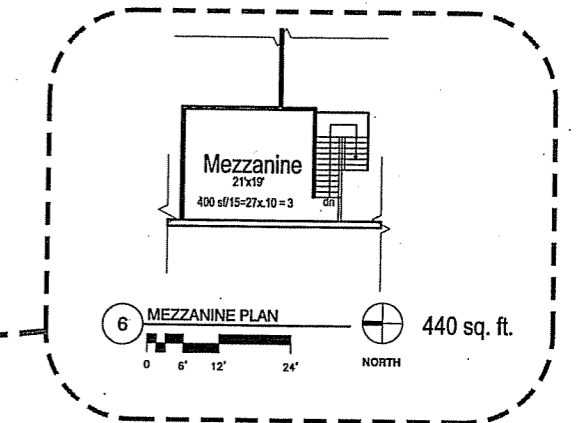
L1.0



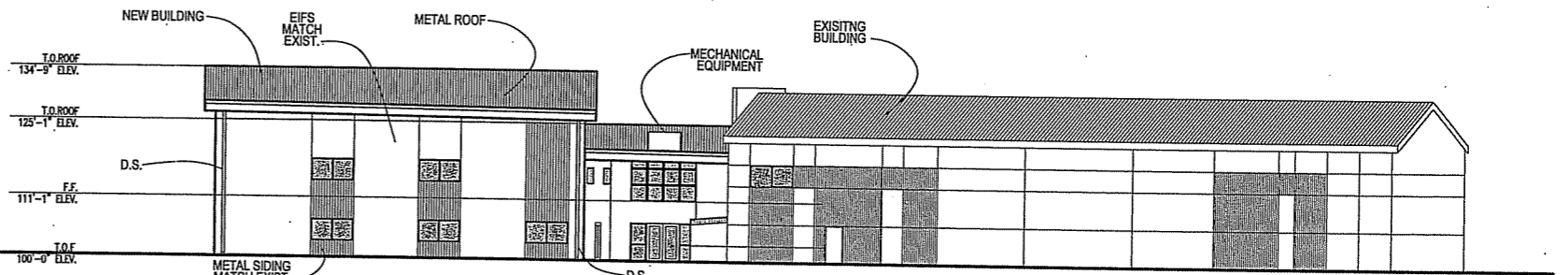
1st FLOOR PLAN



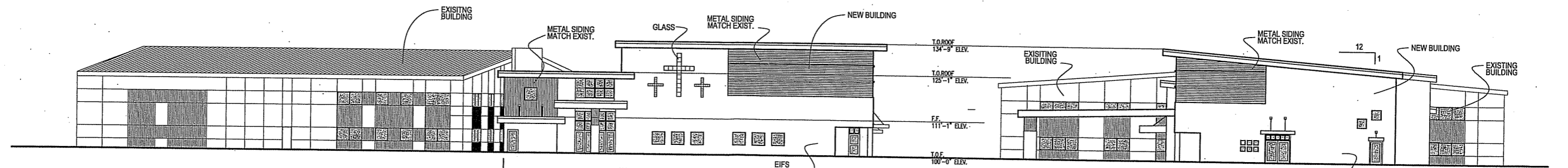
2nd FLOOR PLAN



MEZZANINE FLOOR PLAN



EAST ELEVATION



WEST ELEVATION

SOUTH ELEVATION

DIMENSION IV-MADISON
 Architecture, Engineering and Interior Design
 313 West Beltline Hwy., Suite 161
 Madison, WI 53713
 phone (608) 229-4444 fax (608) 229-4445

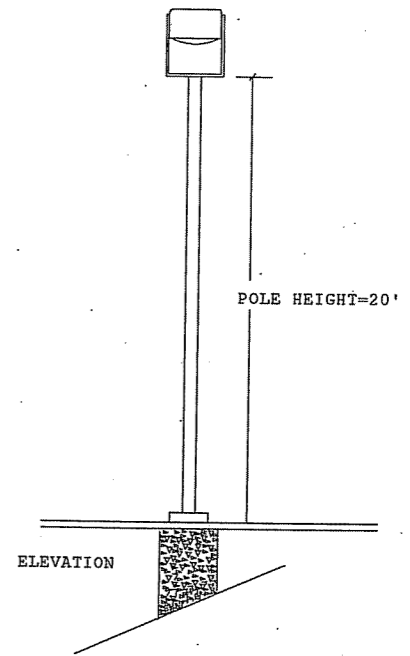
EVANGEL LIFE CENTER

4402 Femrite Dr.
 Madison, WI.

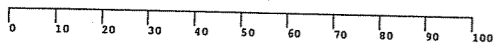
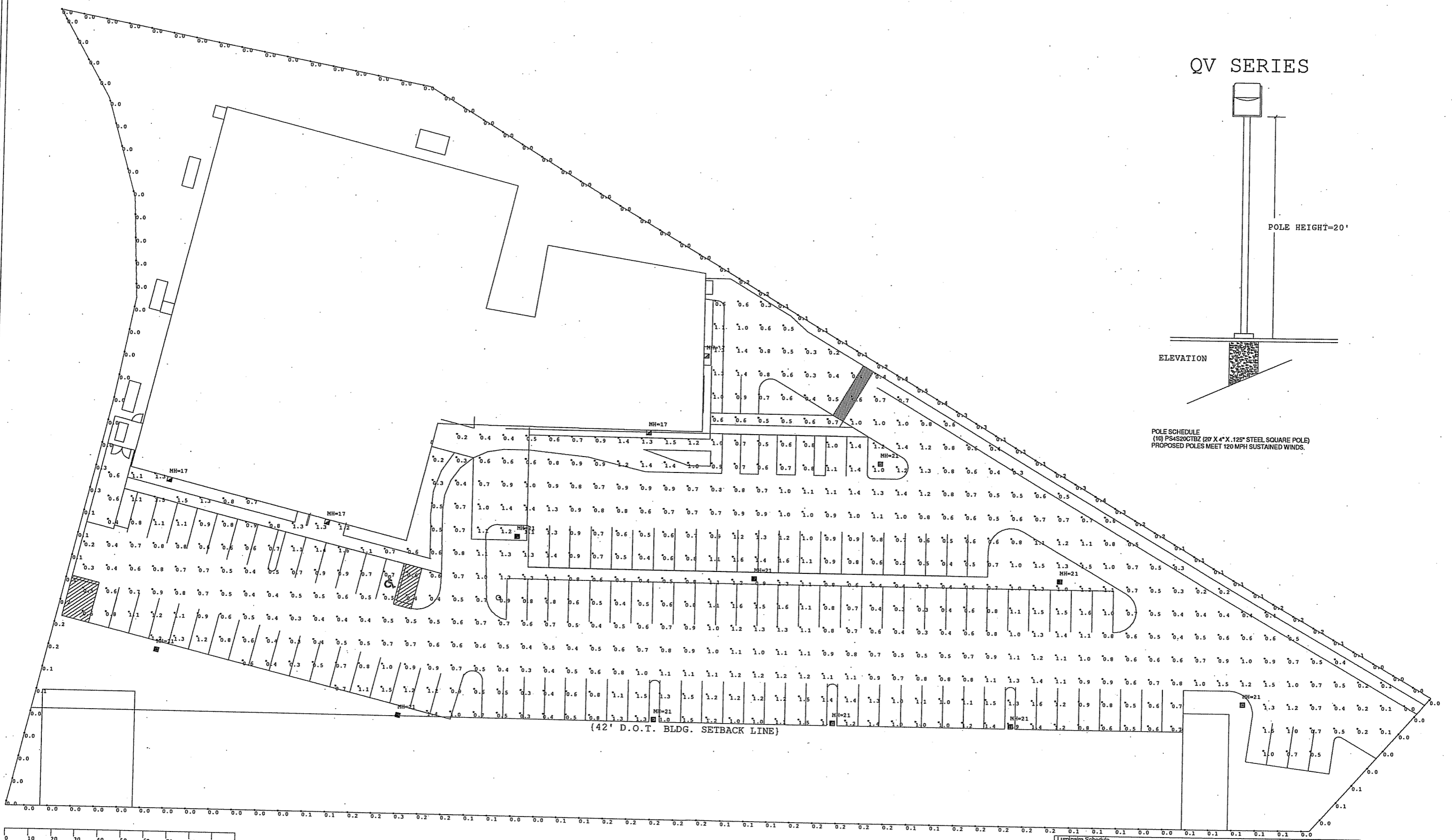
29 March 2006

RUUD LIGHTING

QV SERIES



POLE SCHEDULE
(10) PS4S20GTBZ (20' X 4" X .125" STEEL SQUARE POLE)
PROPOSED POLES MEET 120 MPH SUSTAINED WINDS.



Luminaire Schedule						
Symbol	Qty	Label	Arrangement	Lumens	LLF	Description
□	10	QV417	SINGLE	14000	0.650	QV417-D 175W MH
□	4	QV410	SINGLE	9000	0.650	QV410-D 100W MH

RUUD LIGHTING		Date: 3/28/2006	Scale: 1"=20'	Layout by: ANTONIO CRIVELLO
800.236.7000 USA <www.ruudlighting.com> 905.671.1891 CAN		Project Name: WILSON LIFE CENTER ADDITION 23188		
		Filename: 60328ET1TGC.dwg		
FOOTCANDLES CALCULATED AT GRADE USING MEAN LUMENS				
PROJECT: All Projects				
Label	Avg	Max	Min	Avg/Min
LOT@GRADE	0.81	1.8	0.0	0.00
PROP LINE@4FT AFG	1.09	0.5	0.0	0.00

Distribution results shown on this lighting design are based on project parameters provided to Ruud Lighting used in conjunction with luminaire test procedures conducted under laboratory conditions. Actual project conditions differing from these design parameters may affect field results. The customer is responsible for verifying compliance with any applicable electrical, lighting, or energy code.