

**APPLICATION FOR
URBAN DESIGN COMMISSION
REVIEW AND APPROVAL**

AGENDA ITEM # _____
Project # _____
Legistar # _____

DATE SUBMITTED: February 8, 2012

Action Requested

Informational Presentation

Initial Approval and/or Recommendation

UDC MEETING DATE: February 15, 2012

Final Approval and/or Recommendation

PROJECT ADDRESS: 402 South Point Road

ALDERMANIC DISTRICT: 9

OWNER/DEVELOPER (Partners and/or Principals) ARCHITECT/DESIGNER/OR AGENT:
City of Madison Streets-West Side Public Works Angus Young Associates - Jeffrey Hazekamp

Contacts: Jim Whitney, Randy Wiesner,

555 S. River Street

Al Schumacher

Janesville, WI 53545

CONTACT PERSON: Brad Werginz - Angus Young Associates

Address: 555 S. River Street
Janesville, WI 53548

Phone: (608) 756-2326

Fax: (608) 756-0464

E-mail address: jeffh@angusyoung.com

TYPE OF PROJECT:

(See Section A for:)

Planned Unit Development (PUD)

General Development Plan (GDP)

Specific Implementation Plan (SIP)

Planned Community Development (PCD)

General Development Plan (GDP)

Specific Implementation Plan (SIP)

Planned Residential Development (PRD)

New Construction or Exterior Remodeling in an Urban Design District * (A public hearing is required as well as a fee)

School, Public Building or Space (Fee may be required)

New Construction or Addition to or Remodeling of a Retail, Hotel or Motel Building Exceeding 40,000 Sq. Ft.

Planned Commercial Site

(See Section B for:)

New Construction or Exterior Remodeling in C4 District (Fee required)

(See Section C for:)

R.P.S.M. Parking Variance (Fee required)

(See Section D for:)

Comprehensive Design Review* (Fee required)

Street Graphics Variance* (Fee required)

Other _____

*Public Hearing Required (Submission Deadline 3 Weeks in Advance of Meeting Date)

Where fees are required (as noted above) they apply with the first submittal for either initial or final approval of a project.

PLEASE PRINT!

PLEASE PRINT!

South Point Public Works Facility – Warm Storage Building

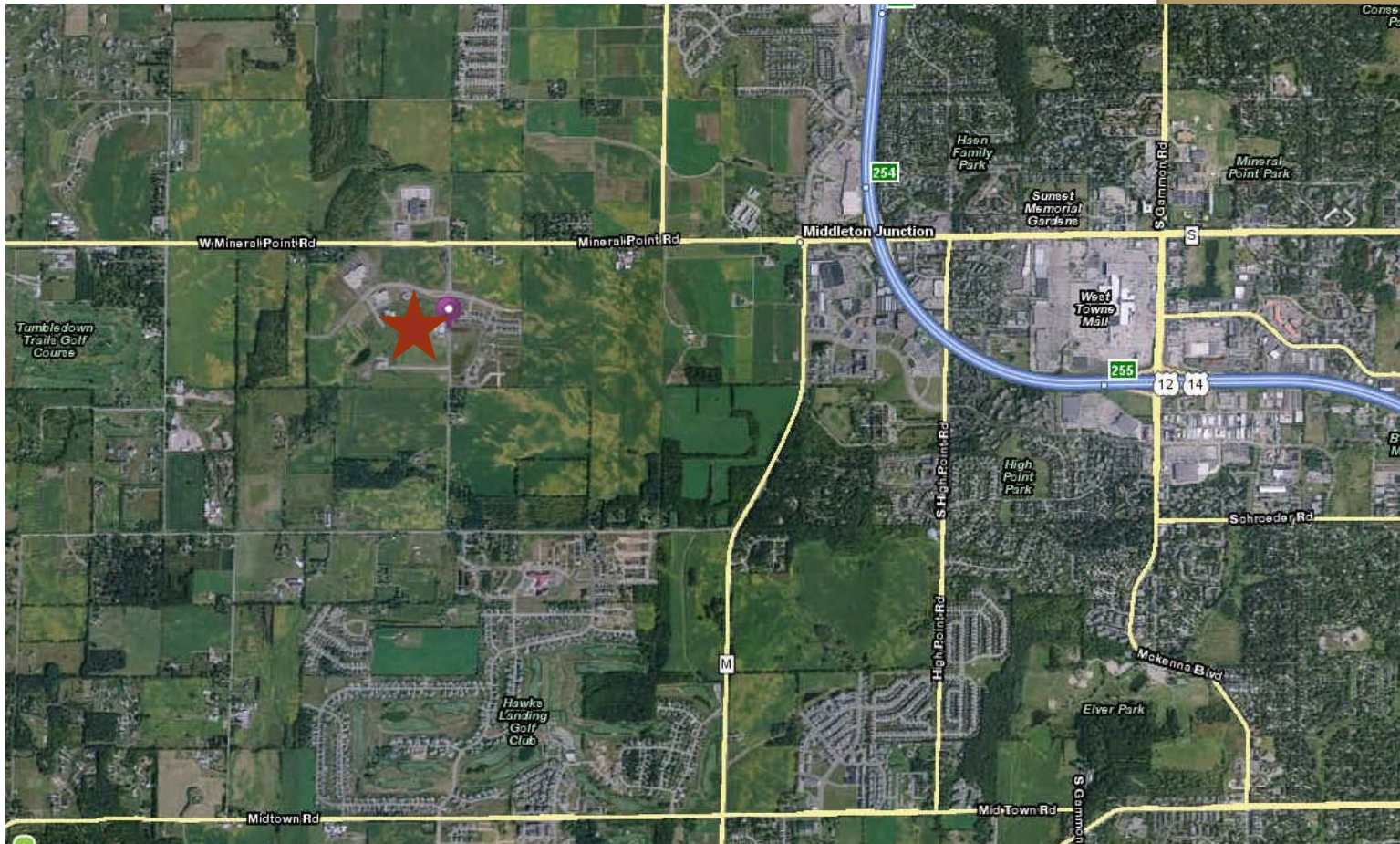
Urban Design Commission Submittal
–Initial Approval Presentation
February 15, 2012

Jeff Hazekamp, Angus Young Associates
jeffh@angusyoung.com (608) 756-2326

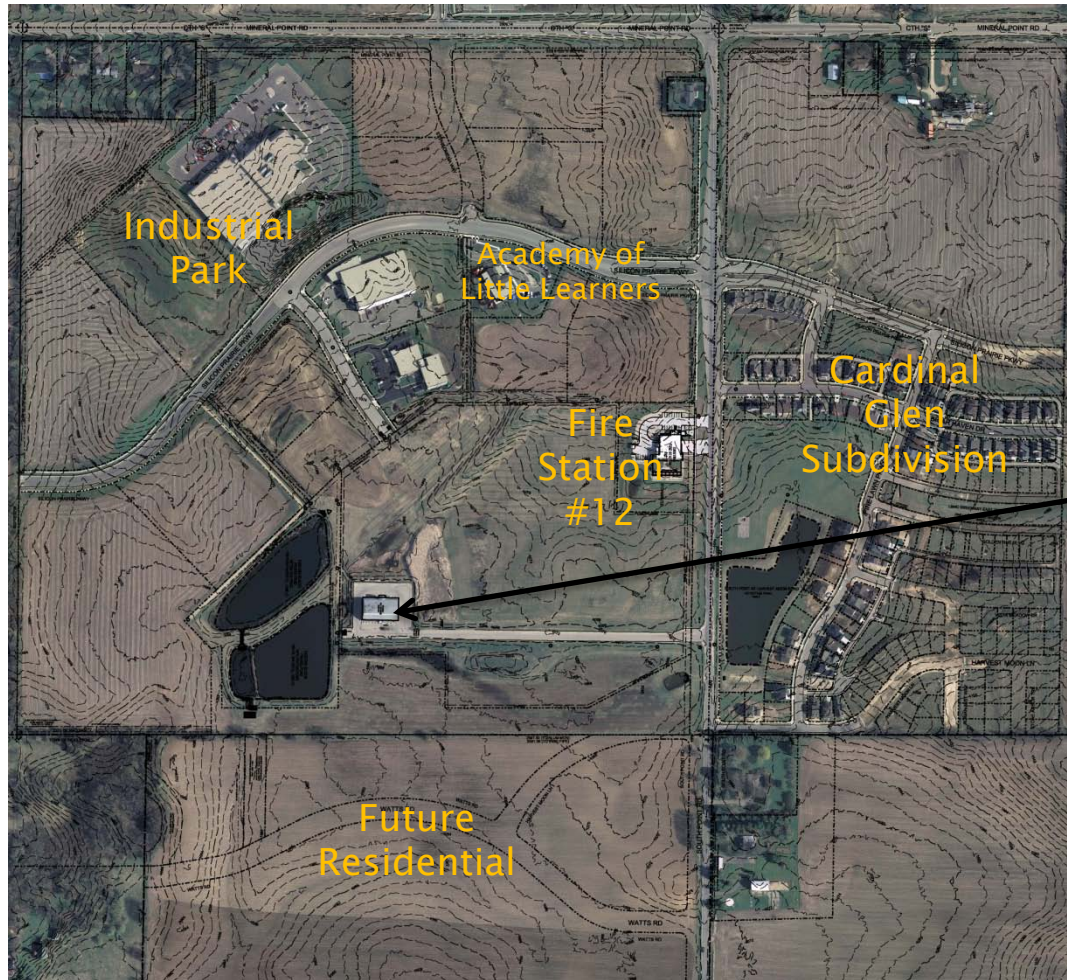
Project Description

- New 21,280 sf Warm Storage Building for Streets Department on existing South Point Public Works Facility site at 402 South Point Road

Location Map



Neighborhood Site Analysis



- Zoned SM – Specific Manufacturing
- Aldermanic District 9

Existing Salt Storage Building and Driveway

Neighborhood Images



Neighborhood Images



Neighborhood Images



08/16/2011

Neighborhood Images



Neighborhood Images



08/16/2011

Neighborhood Images



08/16/2011

Neighborhood Images



08/16/2011

Neighborhood Images



Neighborhood Images



08/16/2011

Neighborhood Images



Neighborhood Images



Neighborhood Images



08/16/2011

Neighborhood Images



08/16/2011

Site Analysis

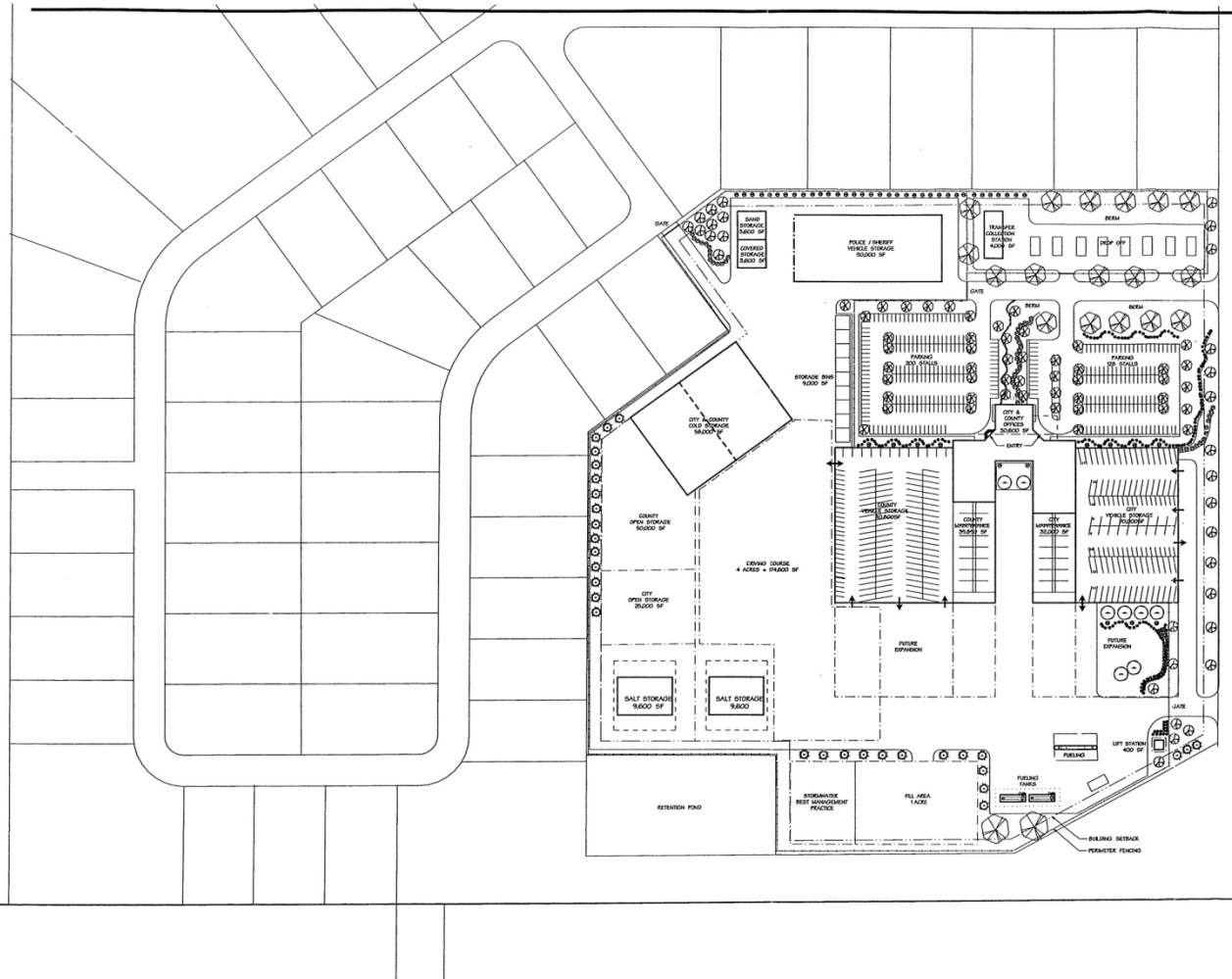


- Endangered Resources Review did not determine any follow-up actions on the site
- Geotech report determined generally:
 - 5-30" topsoil over
 - 1-3' stiff/hard lean clay over
 - 7-13.5' medium stiff/lean clay and/or very loose to medium dense sand with some silt over
 - Sand w/various amts. of silt and gravel

Anticipated Wetlands (awaiting Wetland Delineation Report)

Previous Master Plan

- September 1998
- Adjoined City of Madison/Dane County Facilities on Expanded Site



SOUTH POINT ROAD



MEAD & HUNT, INC.
6501 Walnut Road, Suite 101
Madison, Wisconsin 53719-2706
608-278-6200
Fax: 608-273-4391

MADISON, WISCONSIN

FAR WEST SIDE FACILITY

SOUTH POINT ROAD

REVISIONS:

MSH NO. MIS-98-28A
DATE SEPT. 1998
DRAWN BY JZY
CHECKED BY PWP

SHEET CONTENTS:

ADJONED FACILITY
EXPANDED SITE

SHEET:

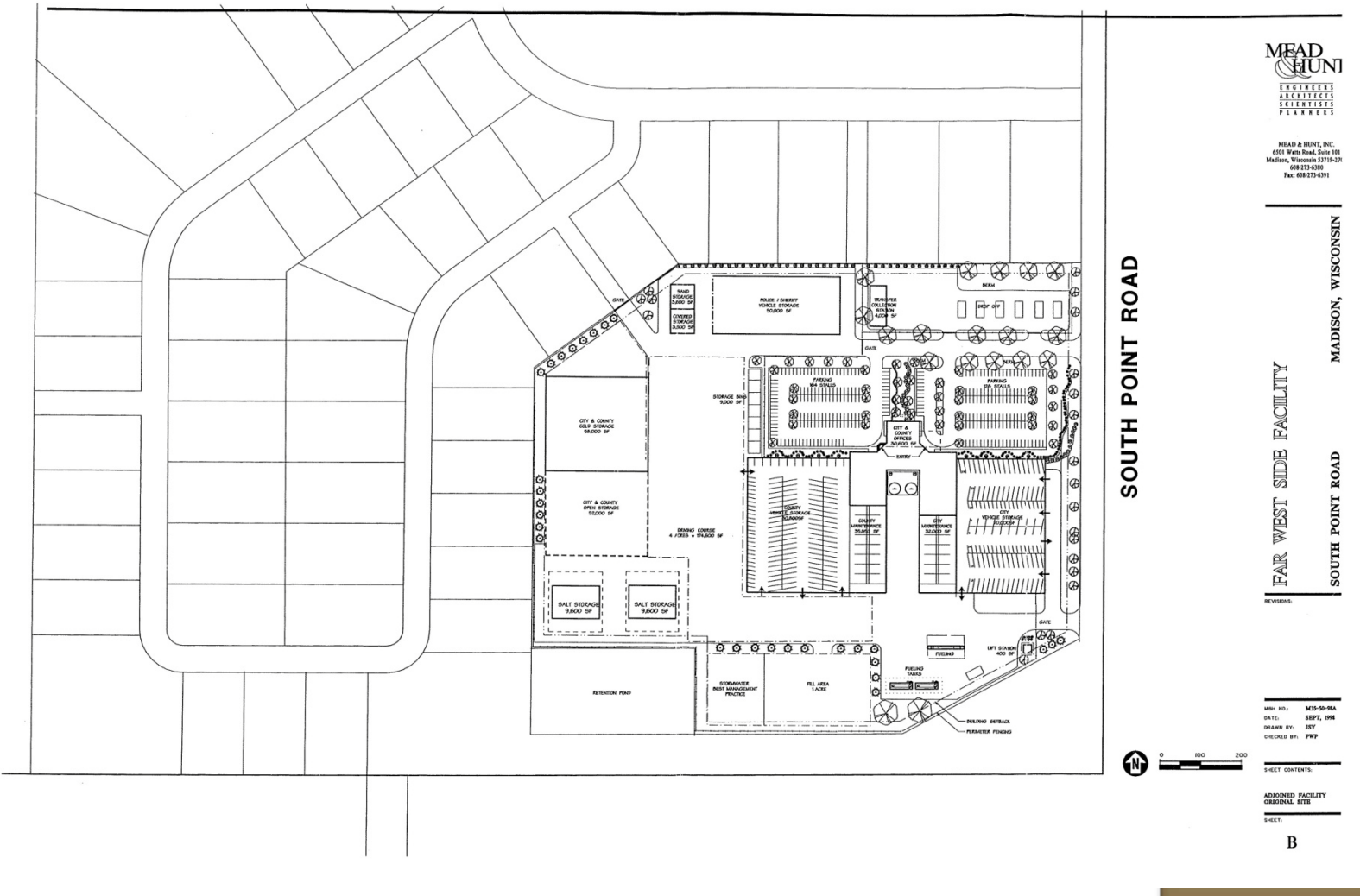
A



South Point Public Works Facility - Warm Storage

- September 1998
- Adjoined City of Madison/Dane County Facilities on Original Site

Previous Master Plan



MEAD & HUNT, INC.
6501 Waite Road, Suite 101
Madison, Wisconsin 53719-2711
608-273-6300
Fax: 608-273-6391

SOUTH POINT ROAD
 MADISON, WISCONSIN
 SOUTH POINT ROAD
 FAR WEST SIDE FACILITY

REVISIONS:

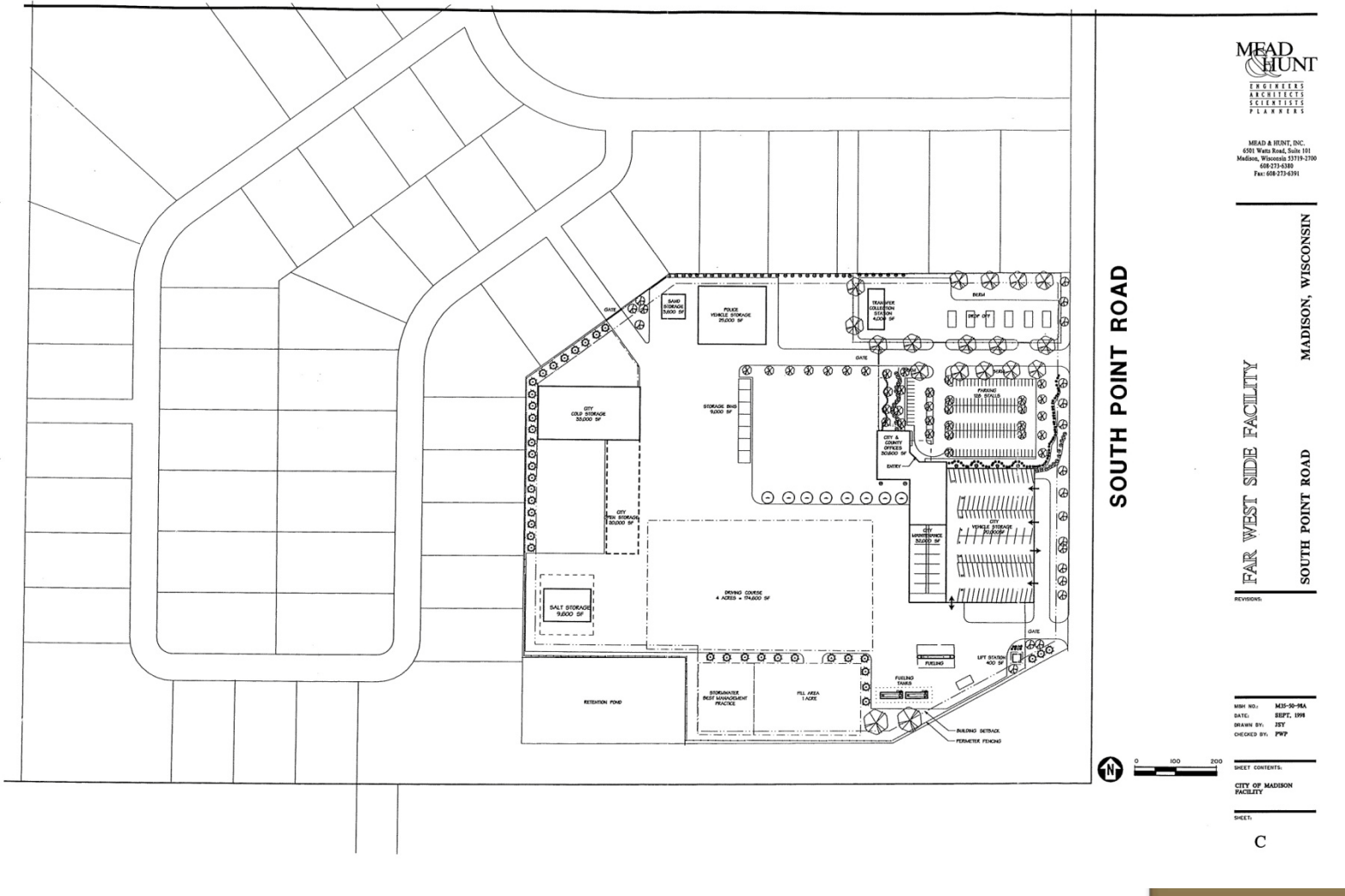
REV. NO.: 025-01-RA
 DATE: SEPT, 1998
 DRAWN BY: JSY
 CHECKED BY: PWP

SHEET CONTENTS:

ADJOINED FACILITY
 ORIGINAL SITE
 SHEET:
B

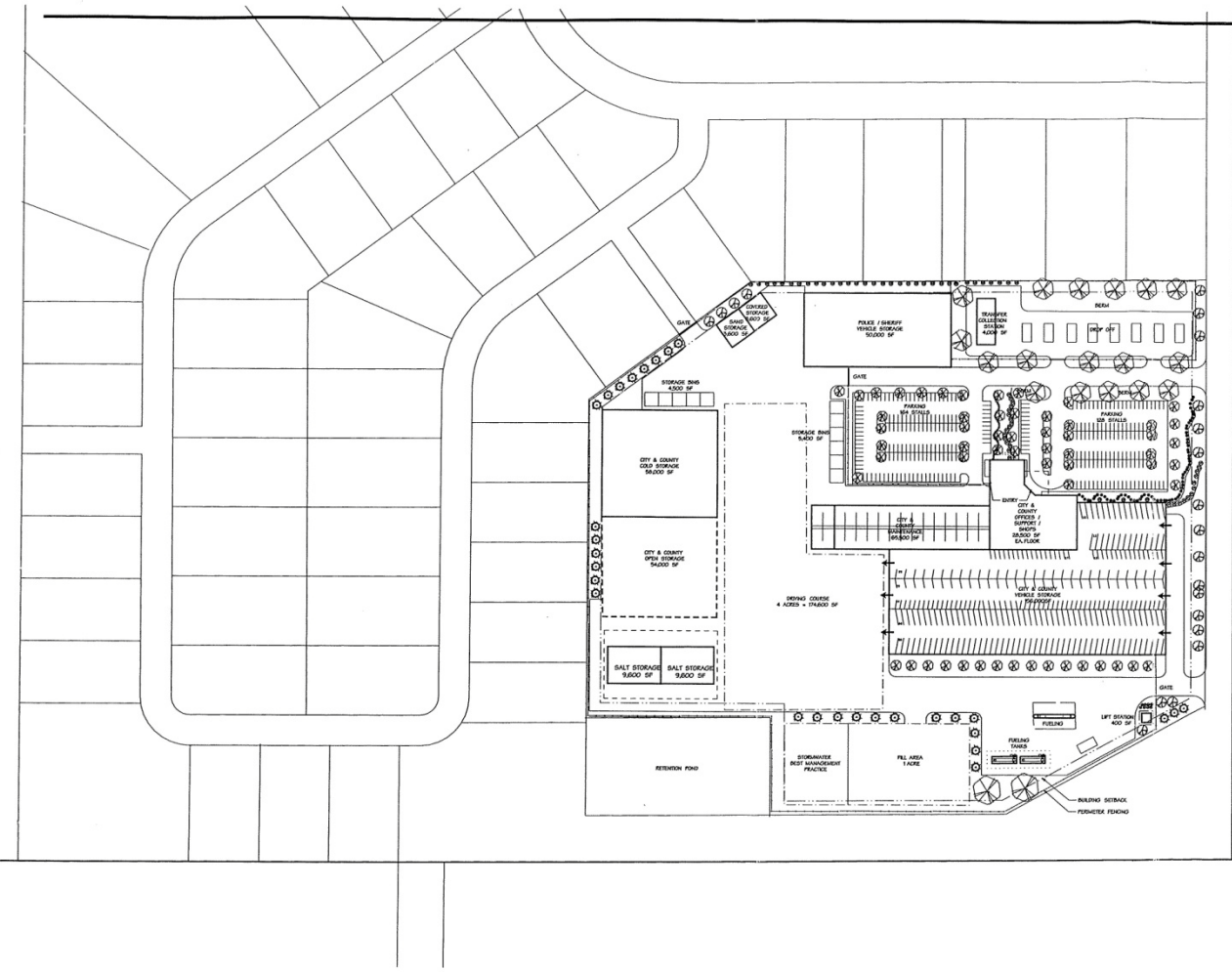
- September 1998
- City of Madison Facility on Original Site

Previous Master Plan



Previous Master Plan

- September 1998
- Combined Facility on Original Site



SOUTH POINT ROAD



MEAD & HUNT, INC.
 6501 Wanta Road, Suite 101
 Madison, Wisconsin 53719-2719
 608-273-4386
 Fax: 608-273-6391

MADISON, WISCONSIN

FAR WEST SIDE FACILITY

SOUTH POINT ROAD

MSW NO.: MSF-09-06A
 DATE: SEPT, 1998
 DRAWN BY: JST
 CHECKED BY: PWP



0 100 200

SHEET CONTENTS:

COMBINED FACILITY ORIGINAL SITE

SHEET:

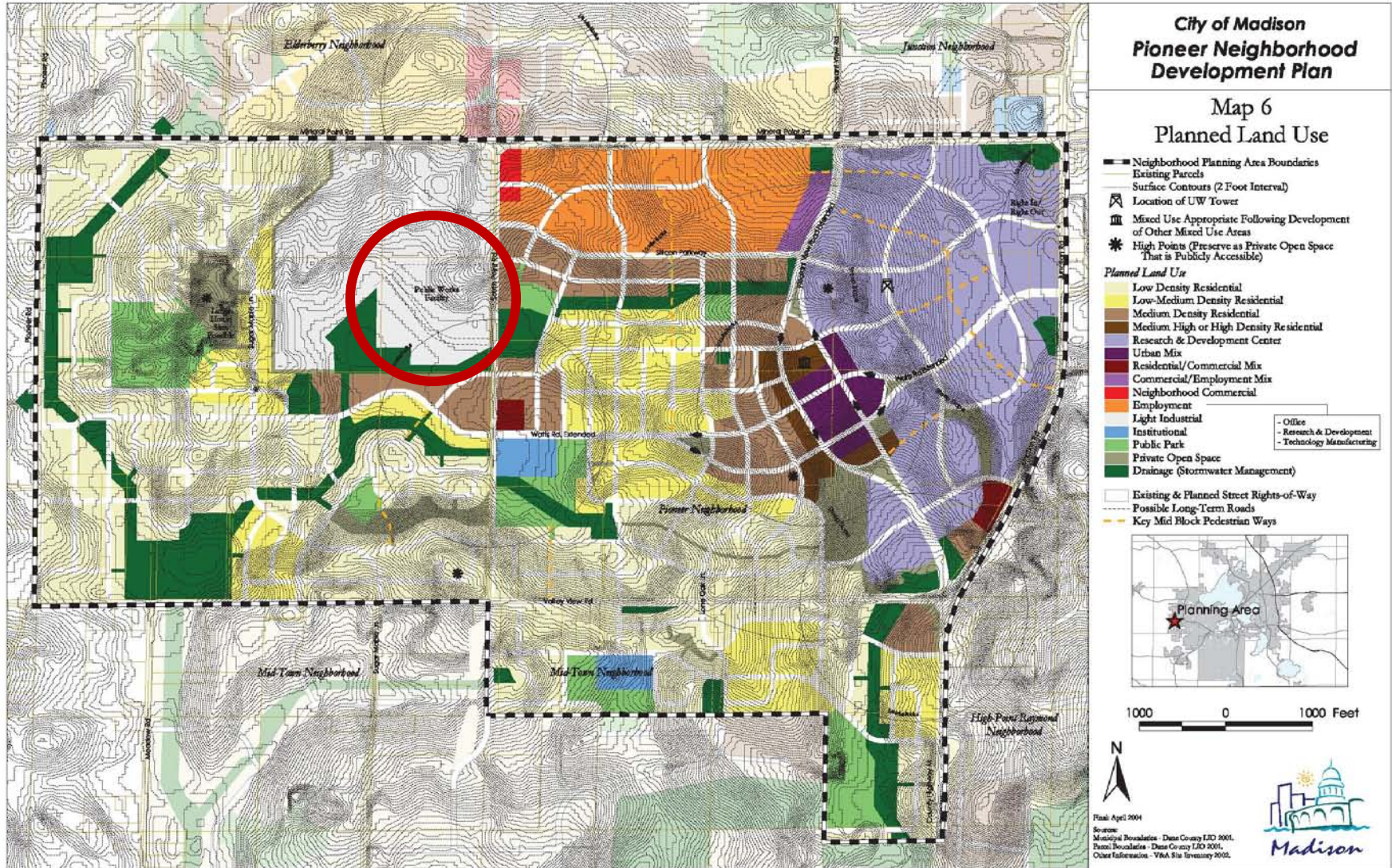
D

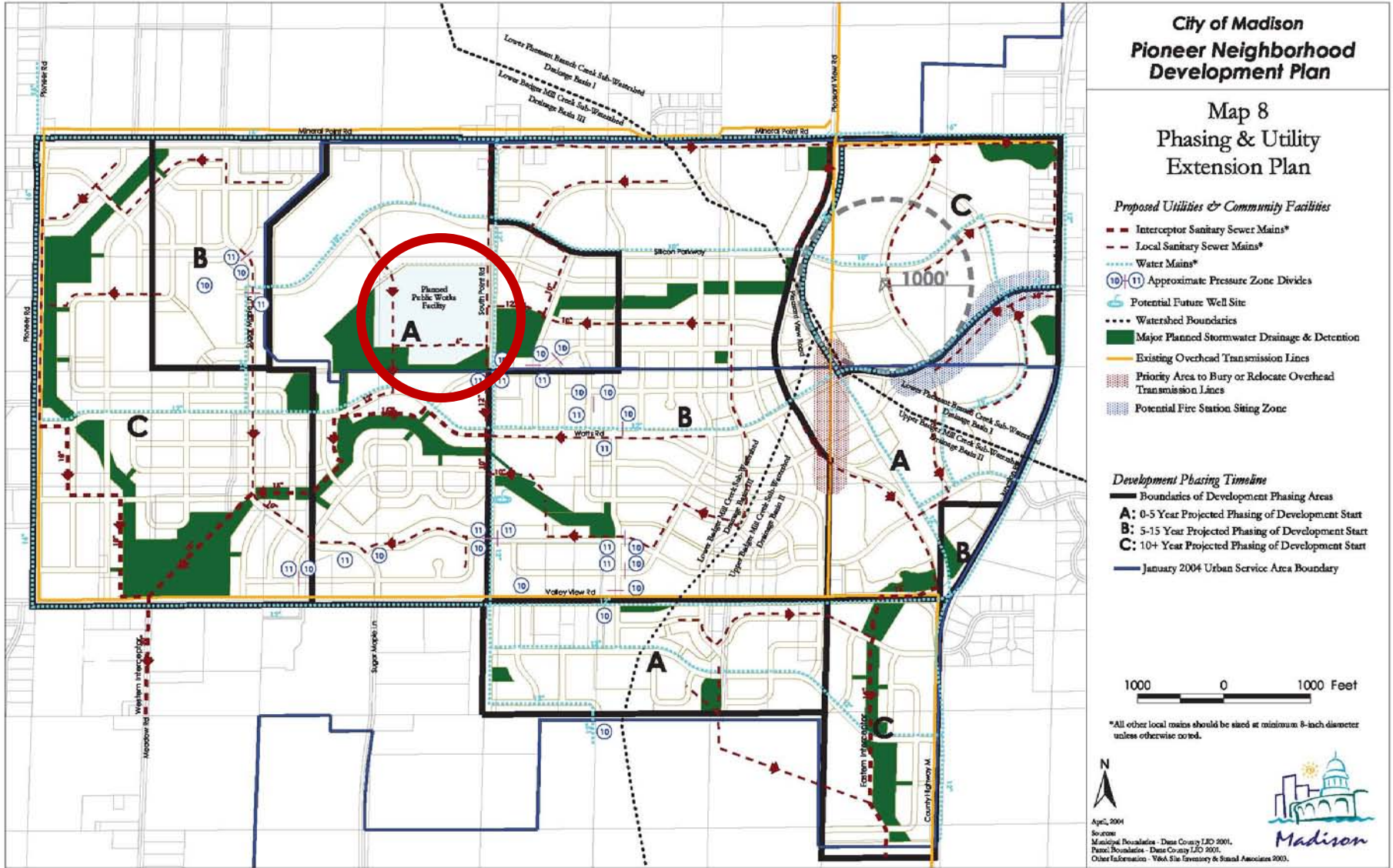


South Point Public Works Facility - Warm Storage

Pioneer Neighborhood Development Plan

• April 2004





**City of Madison
Pioneer Neighborhood
Development Plan**

**Map 8
Phasing & Utility
Extension Plan**

Proposed Utilities & Community Facilities

- Interceptor Sanitary Sewer Mains*
- Local Sanitary Sewer Mains*
- Water Mains*
- ⑩-⑪ Approximate Pressure Zone Divides
- Potential Future Well Site
- Watershed Boundaries
- Major Planned Stormwater Drainage & Detention
- Existing Overhead Transmission Lines
- Priority Area to Bury or Relocate Overhead Transmission Lines
- Potential Fire Station Siting Zone

Development Phasing Timeline

- Boundaries of Development Phasing Areas
- A:** 0-5 Year Projected Phasing of Development Start
- B:** 5-15 Year Projected Phasing of Development Start
- C:** 10+ Year Projected Phasing of Development Start
- January 2004 Urban Service Area Boundary



*All other local mains should be sized at minimum 8-inch diameter unless otherwise noted.



April, 2004

Source:
Municipal Ordinances - Dane County LEO 2001,
Pioneer Ordinances - Dane County LEO 2001,
Other Information - Y&A Site Inventory & Study Associates 2003.

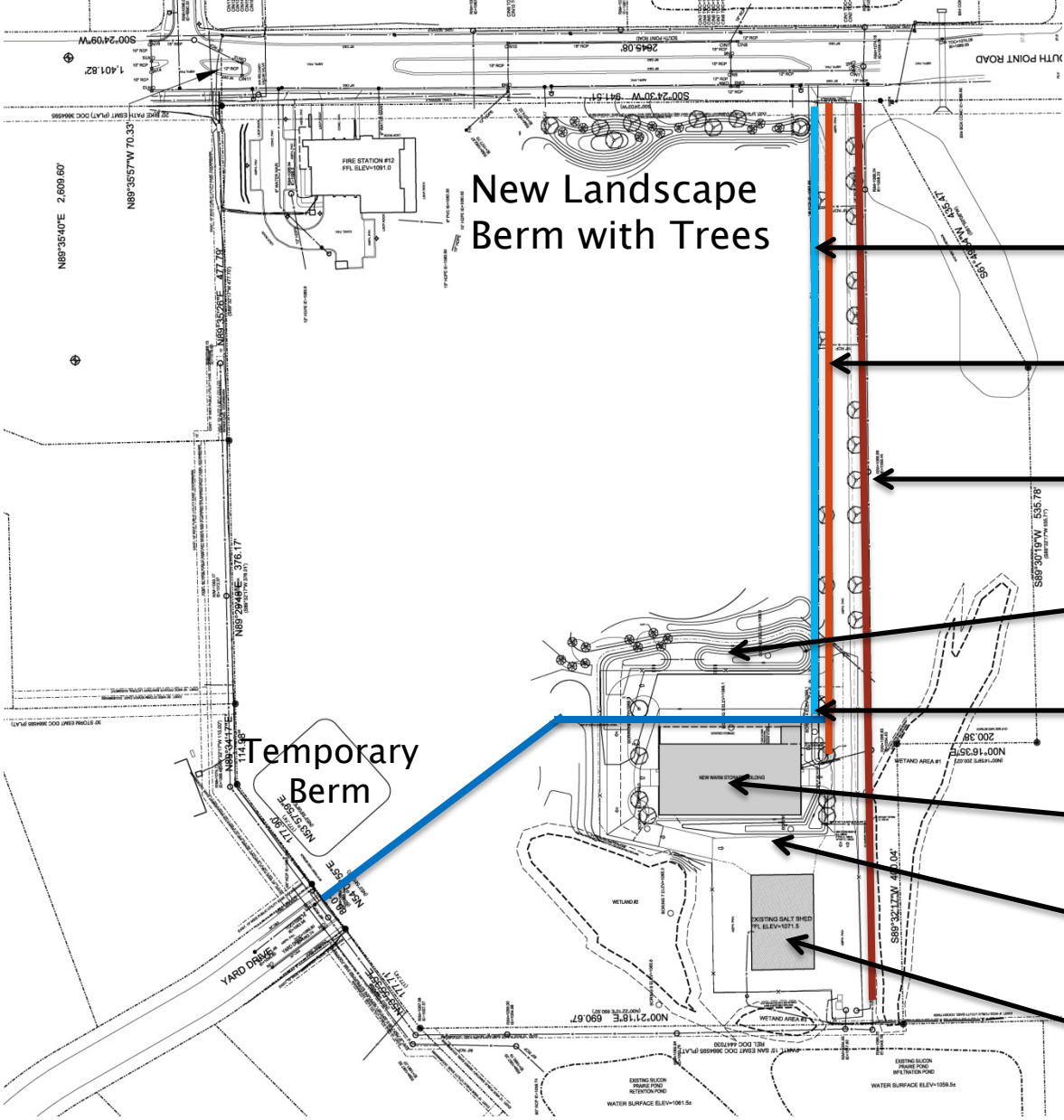


Master Plan



- Potential Future Developments:
- Low Speed Driver Training Area for Large Vehicles, Including: Fire, Streets, Metro, Police & Others
 - Biogas digester
 - Police Evidence Storage
 - Fire Training
- * Development of Future Area will Require UDC Review & Approval

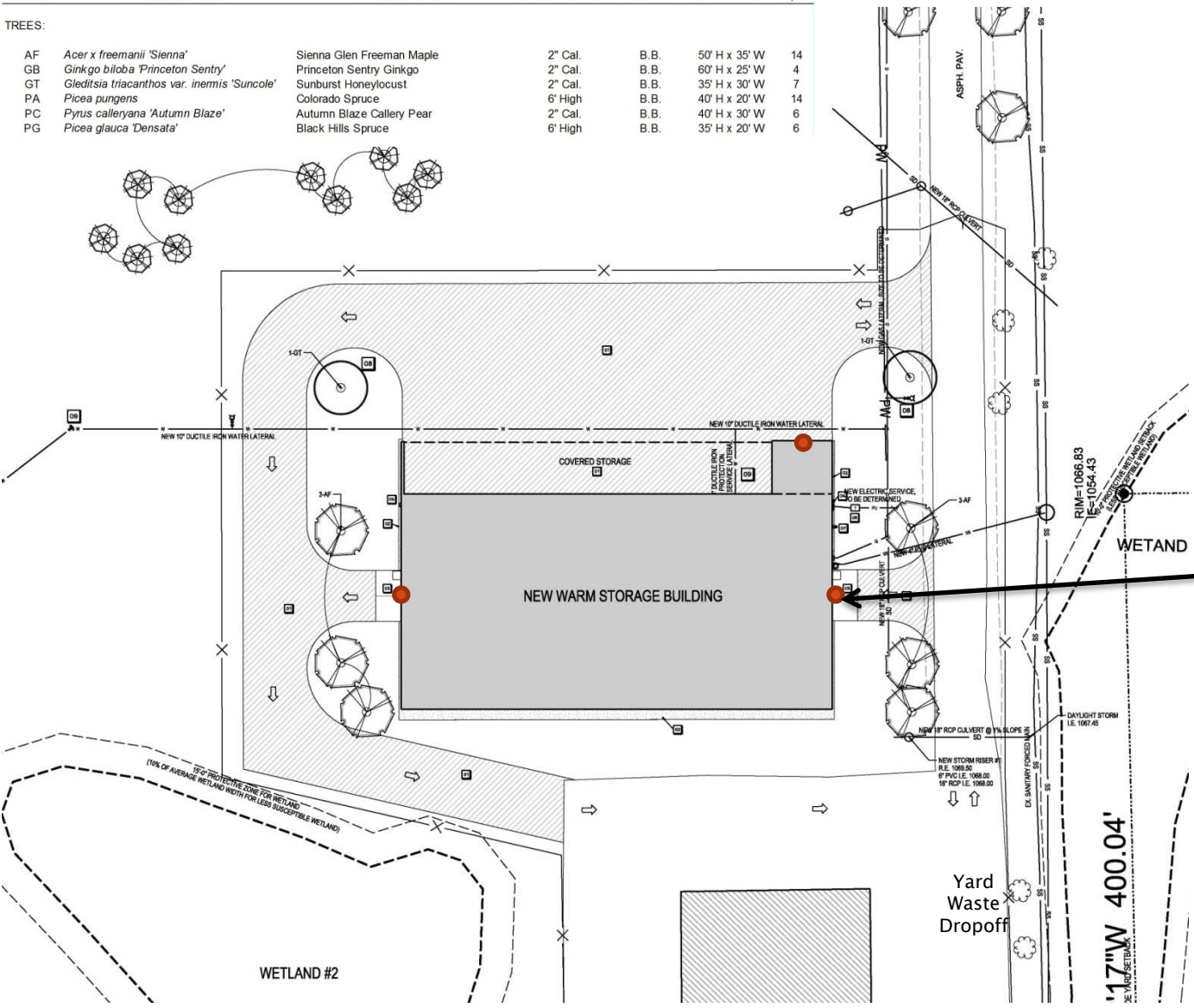
Overall Site Plan



- ← Future Water lateral to provide loop service
- ← Gas Service from South Point
- ← Sanitary to connect to south
- ← Wet Detention Pond
- ← Proposed Water lateral with two fire hydrants
- ← Proposed New Building
- ← Grassed Swale & Dry Detention
- ← Existing Salt Storage

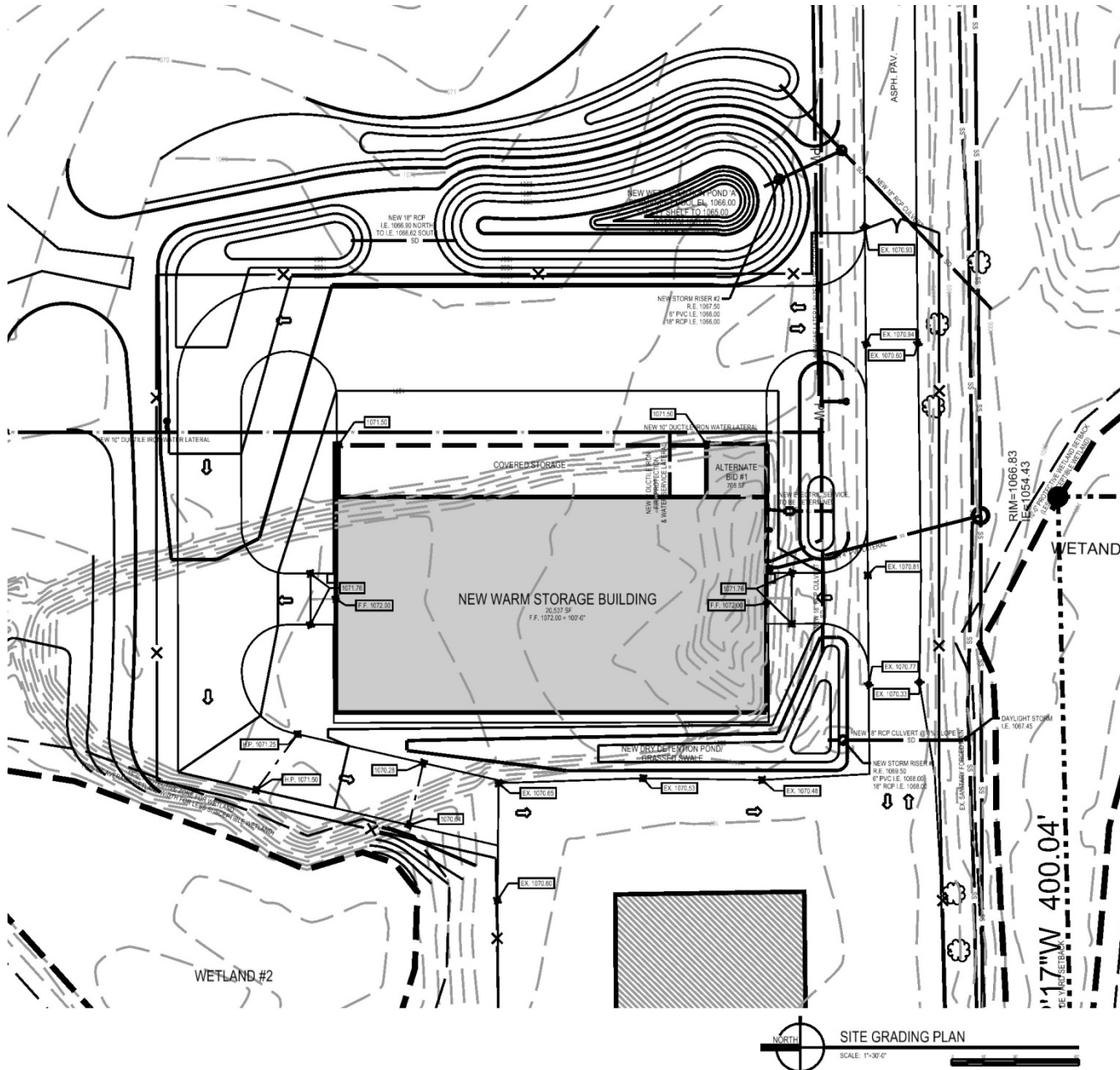
LANDSCAPE PLANT LEGEND

SYMBOL	BOTANICAL NAME	COMMON NAME	INSTALLED SIZE	ROOT	MATURE SIZE	QTY
AF	<i>Acer x freemanii</i> 'Sienna'	Sienna Glen Freeman Maple	2" Cal.	B.B.	50' H x 35' W	14
GB	<i>Ginkgo biloba</i> 'Princeton Sentry'	Princeton Sentry Ginkgo	2" Cal.	B.B.	60' H x 25' W	4
GT	<i>Gleditsia triacanthos</i> var. <i>inermis</i> 'Suncole'	Sunburst Honeylocust	2" Cal.	B.B.	35' H x 30' W	7
PA	<i>Picea pungens</i>	Colorado Spruce	6" High	B.B.	40' H x 20' W	14
PC	<i>Pyrus calleryana</i> 'Autumn Blaze'	Autumn Blaze Callery Pear	2" Cal.	B.B.	40' H x 30' W	6
PG	<i>Picea glauca</i> 'Densata'	Black Hills Spruce	6" High	B.B.	35' H x 20' W	6



Proposed Site / Landscape Plan

- Seeded utility lawn mix
- Covered Storage
- Wall-Pak Exterior Lighting
- Manual Swing Gate to be relocated



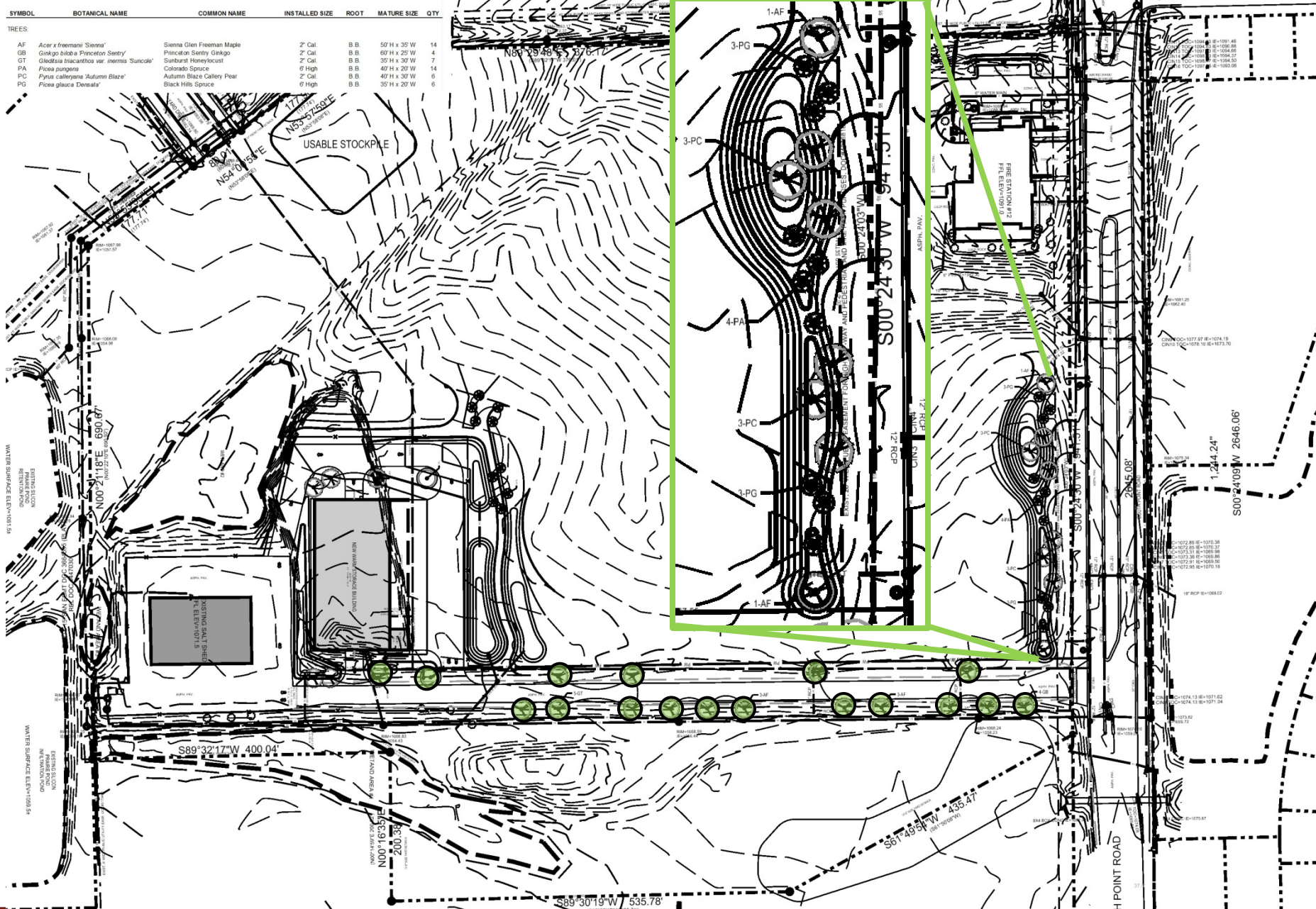
Proposed Stormwater

- New Wet Detention Pond on east handles majority of pavement runoff
- New grassed swale and dry detention on west handles roof runoff and some pavement
- Both stormwater features discharge to south under driveway
- Accommodate future driveway
- Divert existing runoff to the existing wetland #2 and to the east of stormwater features for Warm Storage Building

NORTH
 SITE GRADING PLAN
 SCALE: 1"=30' 0"

LANDSCAPE PLANT LEGEND

SYMBOL	BOTANICAL NAME	COMMON NAME	INSTALLED SIZE	ROOT	MATURE SIZE	QTY
AF	<i>Acer x freemanii 'Sienna'</i>	Sienna Green Freeman Maple	2' Cal.	B.B.	50' H x 35' W	14
GB	<i>Ginkgo biloba 'Princeton Sentry'</i>	Princeton Sentry Ginkgo	2' Cal.	B.B.	60' H x 25' W	4
OT	<i>Quercus ilicifolia var. nemris 'Suncoast'</i>	Sunburst Honeylocust	2' Cal.	B.B.	35' H x 30' W	7
PA	<i>Ficus pungens</i>	Colorado Spruce	6' High	B.B.	40' H x 20' W	14
PC	<i>Pyrus calleryana 'Autumn Blaze'</i>	Autumn Blaze Callery Pear	2' Cal.	B.B.	40' H x 30' W	6
PG	<i>Ficus glauca 'Densata'</i>	Black Hills Spruce	6' High	B.B.	35' H x 20' W	6



Exterior Lighting

E COOPER LIGHTING - LUMARK®

DESCRIPTION

The Lumark Wal-Pak Series of wall luminaires provides traditional architectural style with high performance energy efficient illumination. Rugged die-cast aluminum construction, stainless steel hardware along with a sealed and gasketed optical compartment make the Wal-Pak virtually impenetrable to contaminants. IP66 Rated. Six available lamp sources including patent pending energy efficient LED, pulse start metal halide, compact fluorescent, ceramic metal halide, standard metal halide and high pressure sodium. UL and dUL wet location listed. The Wal-Pak wall luminaire is ideal for pathway illumination, building entrances, vehicle ramps, schools, tunnels, stairways and loading docks.

SPECIFICATION FEATURES

Housing

Rugged one-piece die-cast aluminum housing and hinged, removable die-cast aluminum door. One-piece silicone gasket seals the optical chamber. UL 1598 wet location listed and IP66 ingress protection rated. Not recommended for car wash applications.

Electrical

Ballasts, LED driver and related electrical components are hard mounted to the die-cast housing for optimal heat sinking and operating efficiency. Wiring is extended through a silicone gasket at the back of the housing. Three 1/2" threaded conduit entry points allow for thru branch wiring. LED thermal management system incorporates both conduction and natural convection to transfer heat rapidly away from LED source. Integral LED electronic driver incorporates internal fusing designed to withstand a 3kV surge test and is Class 2 rated for 120-277V with an operating temperature of -30° to 60°C. Wal-

Pak LED systems maintain greater than 70% of the initial light output after 50,000 hours of operation. UL listed HID high power factor ballasts are Class H insulation rated (metal halide: 150, 175, 200, 250, 320, 350, 400W [-30°C / -20°F], (high pressure sodium: 50, 70, 100, 150, 250, 400W [-40°C / -40°F]). High efficiency HID ballasts are available in 120V, 208V, 240V, 277V, 347V and 480V. Compact fluorescent high power factor ballasts are Class P insulation rated for 120-277V and have a starting temperature of -18°C / 0°F.

Optical

Highly reflective anodized aluminum reflectors provide high efficiency illumination. Optical assemblies include impact resistant borosilicate refractive glass, Soli™ flat diamond patterned glass and full cutoff IESNA compliant configurations. Patent pending, solid state LED luminaires are thermally optimized with 2400 or 4000 lumen package modules. HID models are offered in horizontal medium or mogul-based

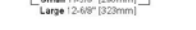
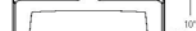
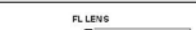
metal halide (MH / MP) or high pressure sodium (HP) lamps. T6 ceramic metal halide (CM) and 4-pin compact fluorescent (CF) lamp models offer high efficiency energy saving illumination.

Door Assembly

Single point, captive stainless steel hardware secures the removable hinged door allowing for ease of installation and maintenance. Door assembly is hinged at the bottom for easy removal, installation and re-lamping.

Finish

Housing and door are protected with 5-stage TGIC dark bronze polyester powder coat paint. Premium TGIC power coat finishes withstand extreme climate changes while providing optimal color and gloss retention. Optional premium colors are available.



WP WAL-PAK
2400 - 4000 Lumen LED
39 - 400W
High Pressure Sodium
Pulse Start Metal Halide
Metal Halide
Ceramic Metal Halide
32 - 140W
Compact Fluorescent

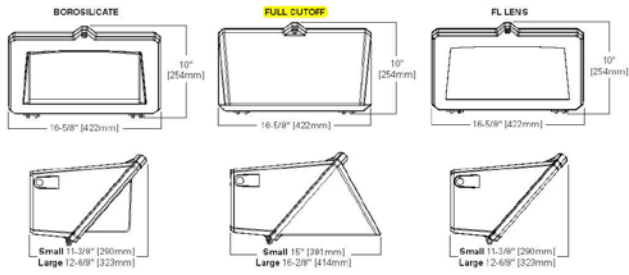
WALL MOUNT LUMINAIRE

TECHNICAL DATA
UL and dUL Wet Location Listed
IP66 Rated
40°C Maximum Ambient Temperature
External Supply Wiring 90°C Maximum
EISA B, ARA, Title 20 Compliant
LM79 / LM80 Compliant

ENERGY DATA
Reactor Ballast Input Watts
50W HPS NPF (58 Watts)
70W HPS NPF (82 Watts)
100W HPS NPF (118 Watts)
150W HPS NPF (175 Watts)
High Reactance Ballast Input Watts
50W MP HPF (69 Watts)
70W MP HPF (94 Watts)
100W MP HPF (125 Watts)
150W MP HPF (185 Watts)
CWA Ballast Input Watts
200W HFS HPF (250 Watts)
200W MP HPF (227 Watts) ⊕
250W MP HPF (280 Watts) ⊕
300W MP HPF (395 Watts) ⊕
350W MP HPF (450 Watts) ⊕
400W HFS HPF (485 Watts)
400W MP HPF (452 Watts) ⊕

SHIPPING DATA
Approximate Net Weight:
32-42 lbs. (15-19 kgs.) AD81002103.ppt
2010-11-02 17:16:12

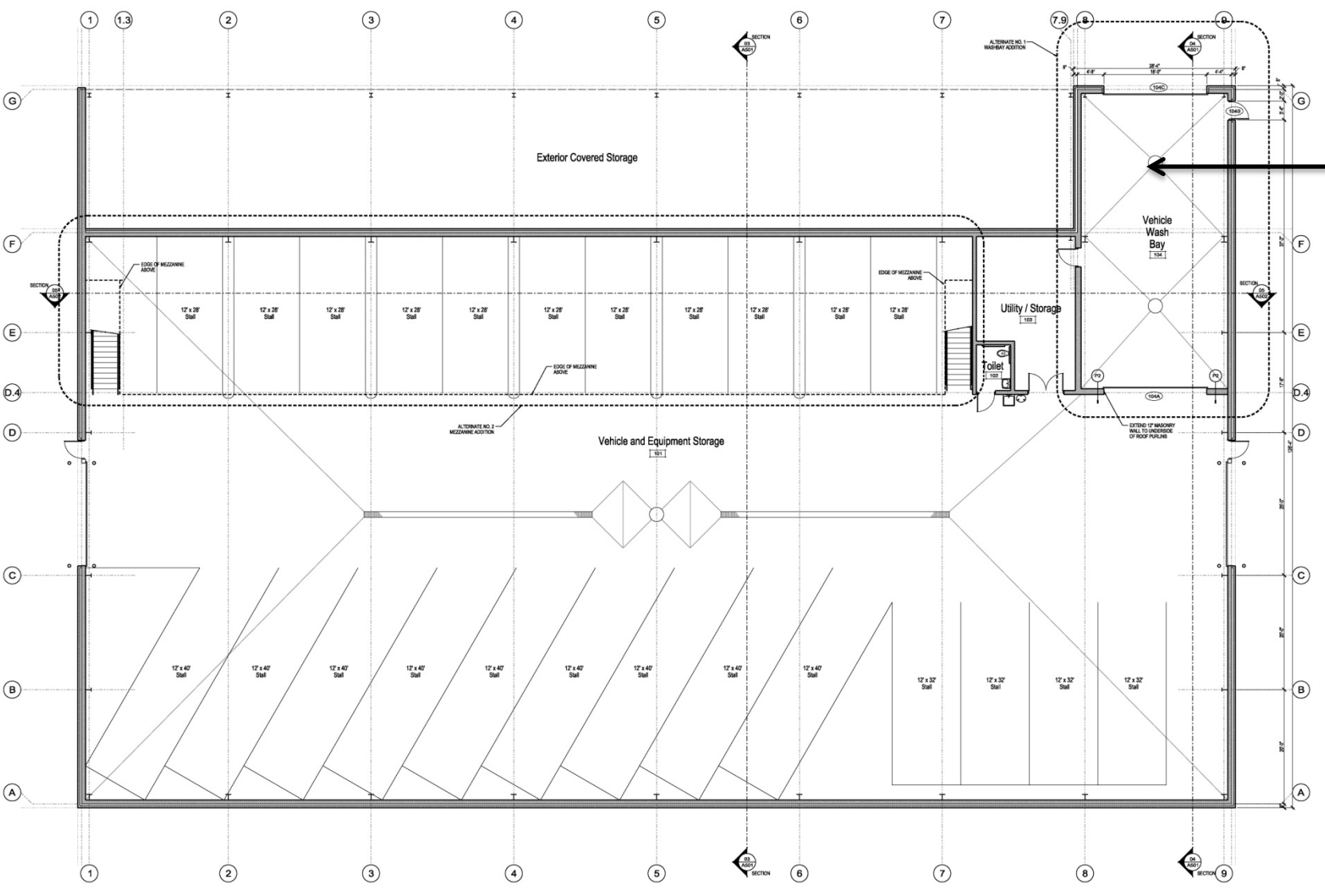
DIMENSIONS



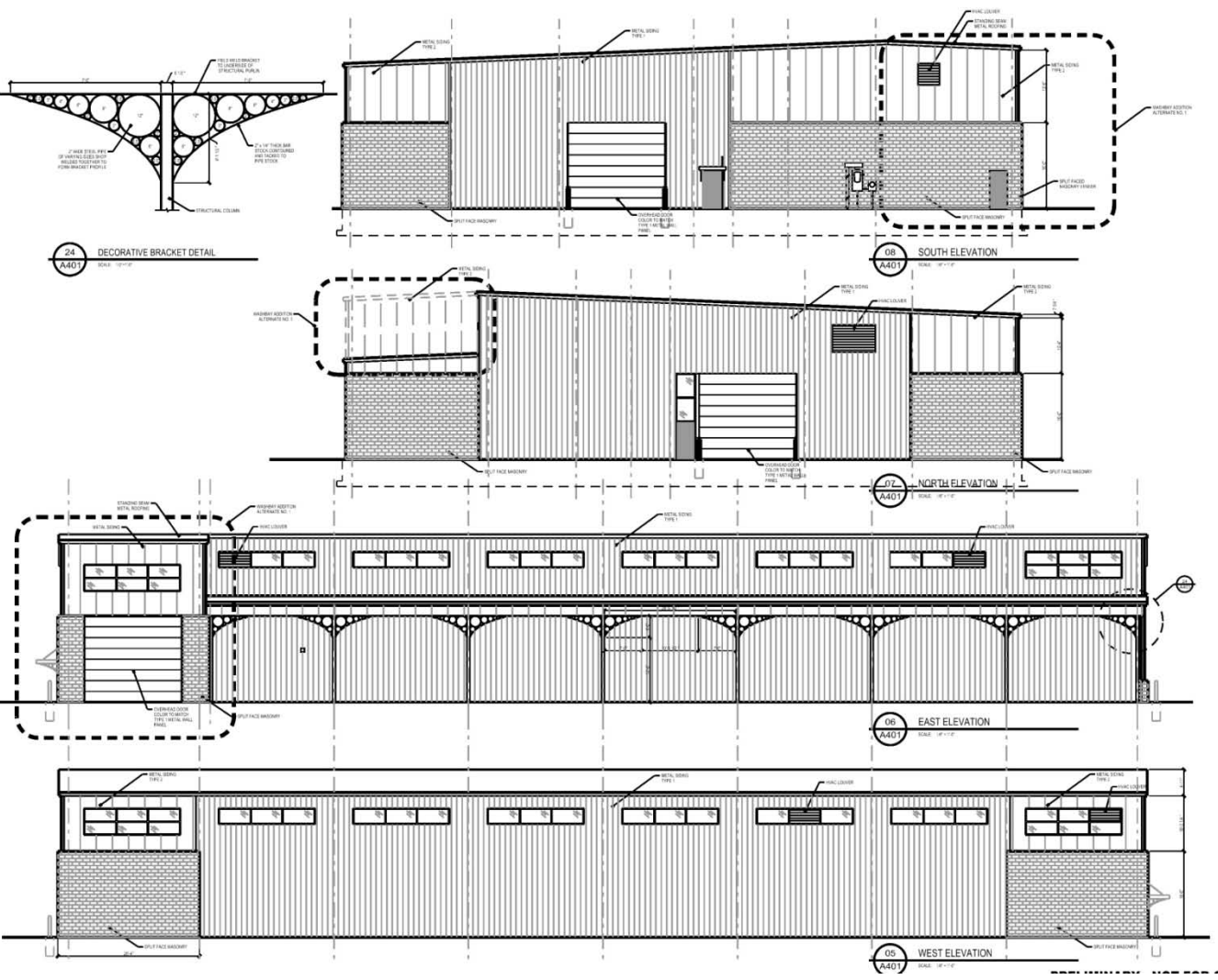
COOPER Lighting
www.cooperlighting.com

Proposed Building Plan

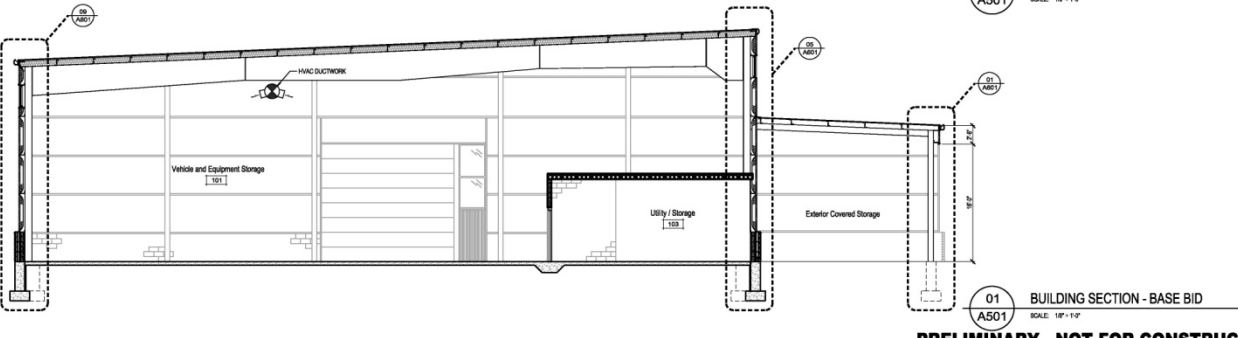
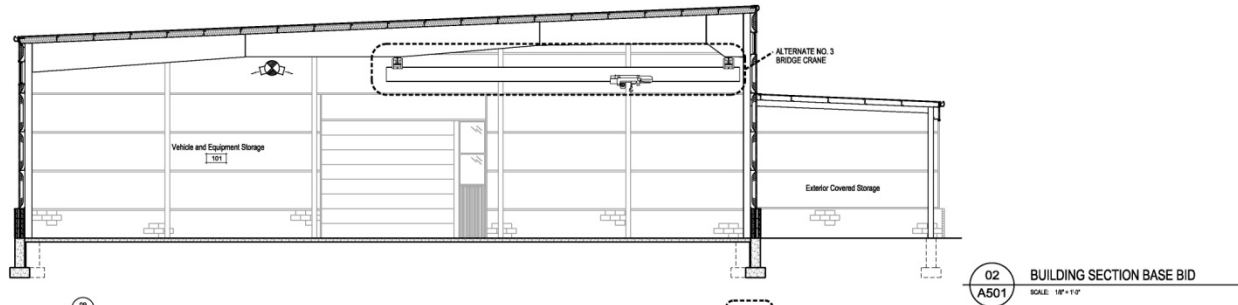
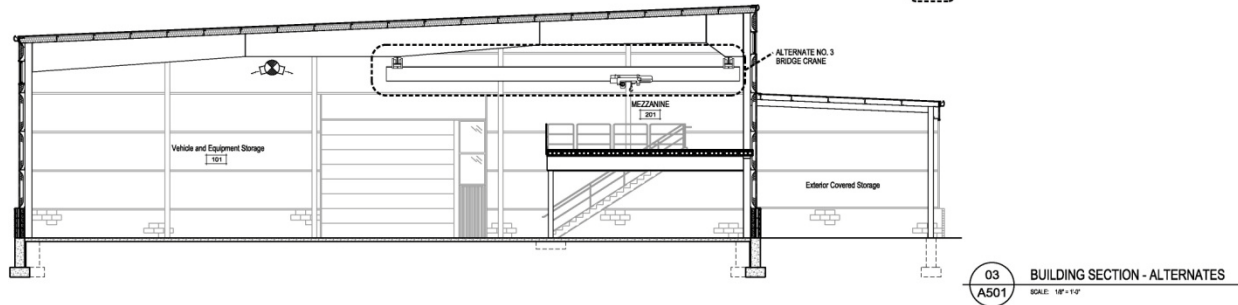
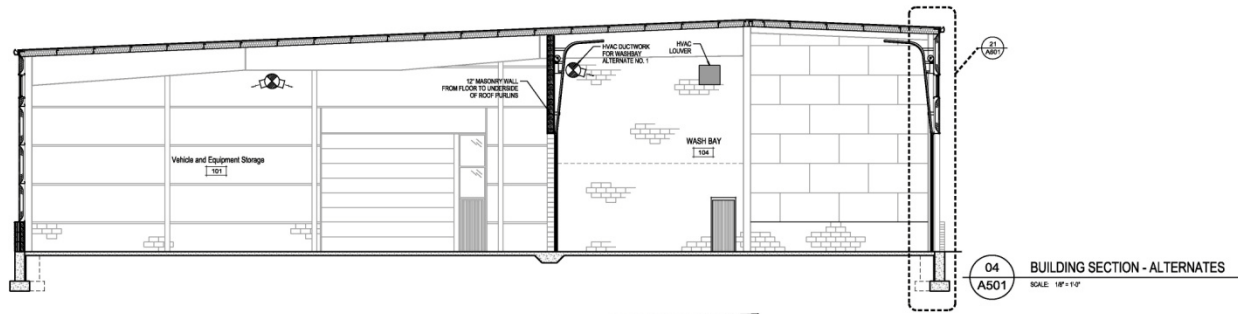
Wash Bay is an alternate



Proposed Building Elevations



Building Sections



PRELIMINARY - NOT FOR CONSTRUCTION

Proposed Building Perspectives



Building Materials:

- Hunter Green Metal Panel
- Buff Split-Face Block
- Tan Doors & Frames & Fascia
- Snow White Standing Seam Roof

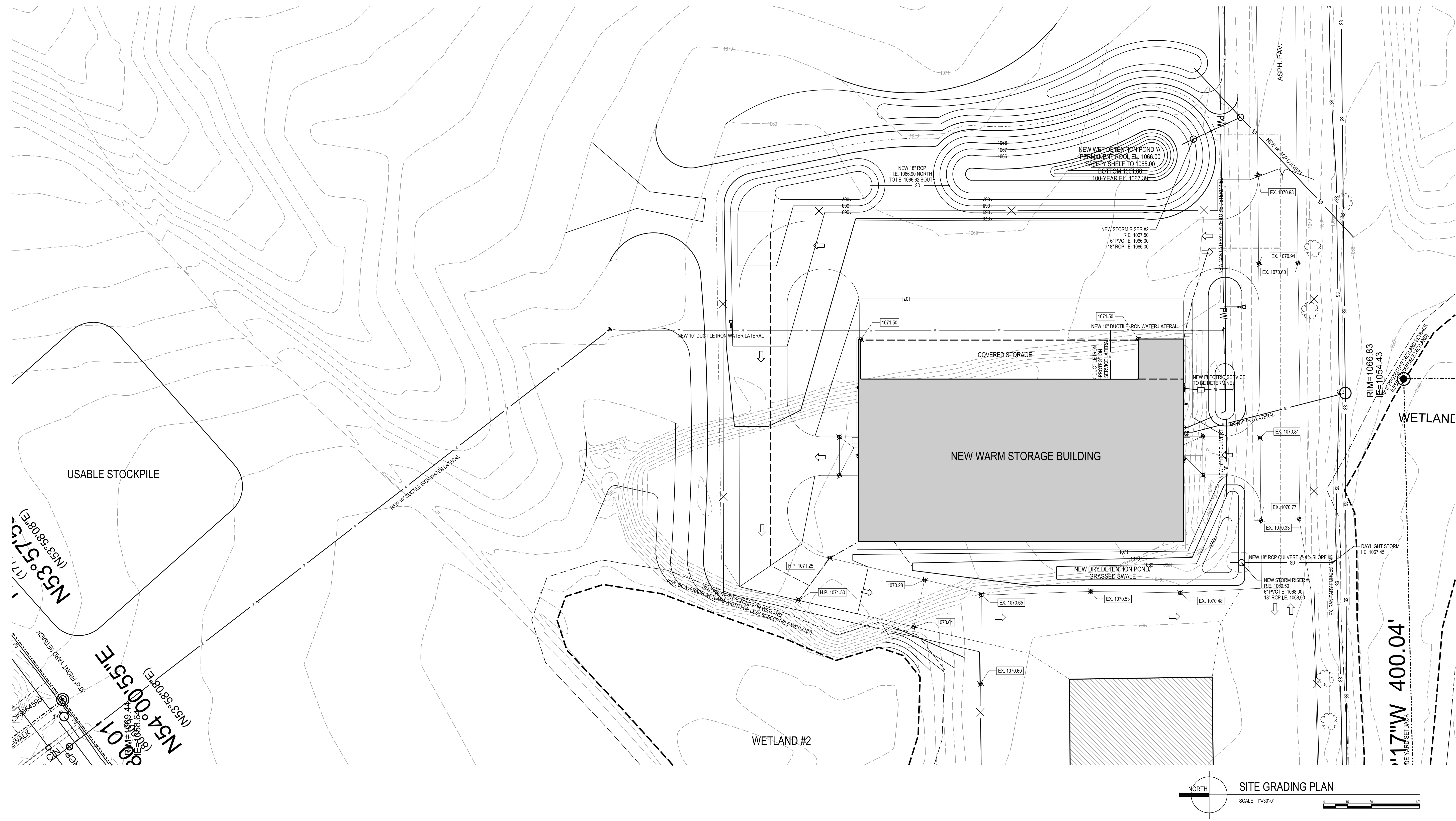
Thank you for your time.

Jeff Hazekamp, Angus Young Associates
jeffh@angusyoung.com (608) 756-2326

SCALE: 1"=30'-0"

PLOTTED BY: KAMU

ORIGINAL SIZE: 24" x 36"
X:\4150\aw41506202.dgn



USABLE STOCKPILE

NEW WARM STORAGE BUILDING

WETLAND

WETLAND #2

17" W 400' 04"

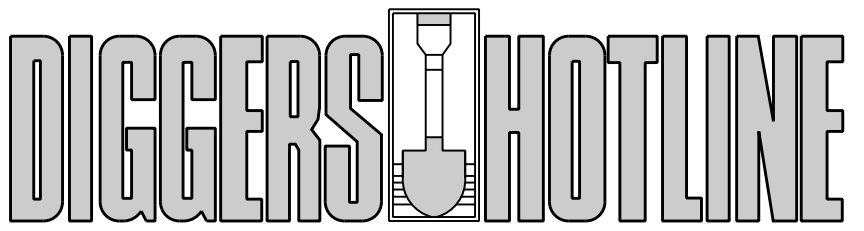


SITE GRADING PLAN

SCALE: 1"=30'-0"

GENERAL NOTES

1. ALL AREAS SHALL BE SEEDDED LAWN UNLESS OTHERWISE NOTED.
2. ALL DECIDUOUS TREES SHALL RECEIVE 4'-0" DIAMETER SHREDDED BARK MULCH TREE RING (3" THICK) WITH SPADE-CUT EDGE.
3. ALL EVERGREEN TREES SHALL RECEIVE 6'-0" DIAMETER SHREDDED BARK MULCH TREE RING (3" THICK) WITH SPADE-CUT EDGE.
4. SEE DETAIL 13C201 FOR TREE PLANTING DETAIL.
5. CONTRACTOR SHALL VERIFY ALL UTILITIES, ELEVATIONS AND DIMENSIONS.
6. GAS LATERAL SHALL CONNECT WITH SOUTH POINT MAIN (APPROXIMATELY 975 LINEAR FEET). CONTRACTOR SHALL COORDINATE WITH UTILITY.



CALL TOLL FREE 1-800-242-8511
 MILWAUKEE AREA 414-259-1181
 FAX A LOCATE 1-800-338-3860
 TDD (HEARING IMPAIRED) 1-800-542-2289
 ONLINE: www.DiggersHotline.com

WISCONSIN STATUTE 182.0175 (1974) REQUIRES A MINIMUM OF THREE (3) WORKING DAYS NOTICE PRIOR TO EXCAVATION.

Due to electronic distribution, this drawing may not be printed to the scale indicated on the drawings. Do NOT use scale to determine dimensions or sizes.

PROJECT NUMBER: 48150
 APPROVED BY: [Signature]
 REVIEWED BY: [Signature]
 DRAWN BY: KAU
 2/7/2012 1:27:28 PM

ISSUANCES

NO.	DATE	DESCRIPTION

REVISIONS

Copyright © 2012 Angus-Young Associates, Inc. All Rights Reserved

Angus Young
 Architecture
 Engineering
 Interior Design
Balance in Creativity
 555 South River Street, Janesville, WI 53548-4783
 Ph: 608.756.2326 Fax: 608.756.0454
 www.angusyoung.com

STREETS DEPARTMENT
 NEW WARM STORAGE BUILDING
 CITY OF MADISON
 MADISON, WISCONSIN

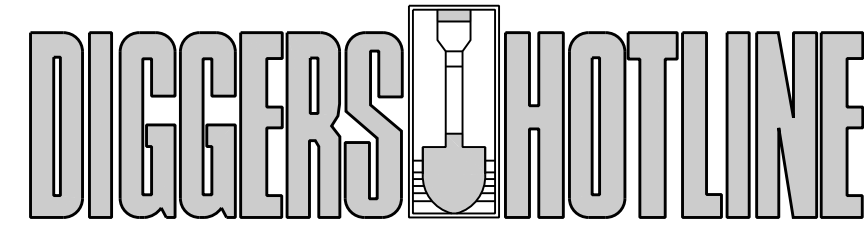
SITE GRADING PLAN

PRELIMINARY - NOT FOR CONSTRUCTION

C202

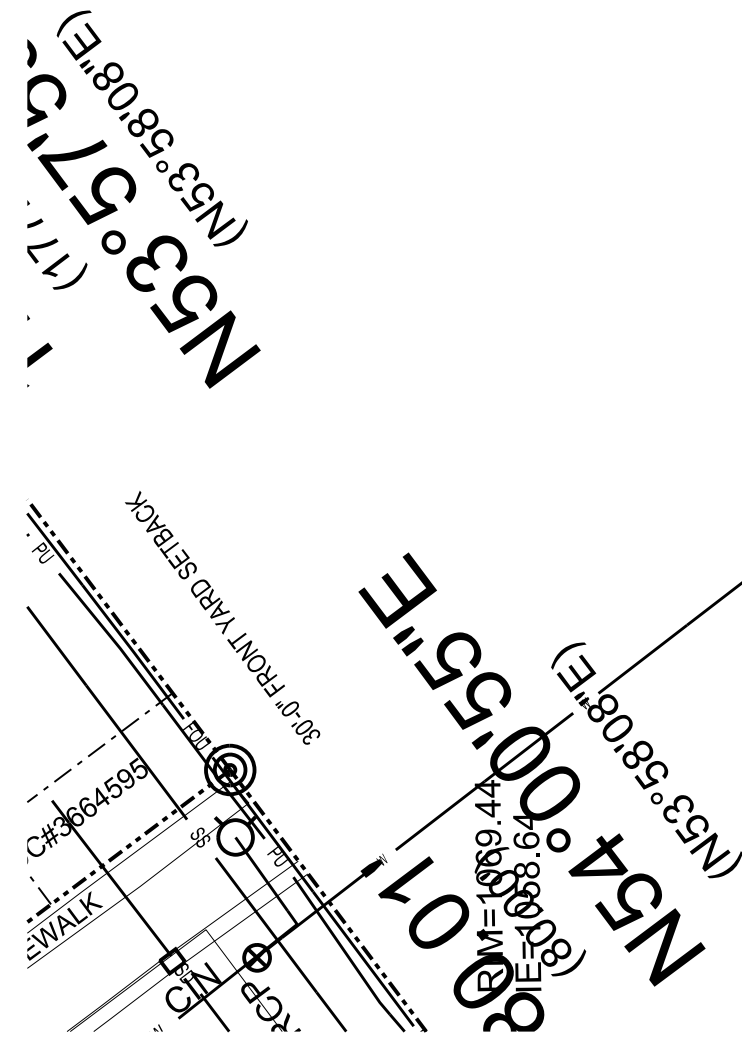
LANDSCAPE PLANT LEGEND

SYMBOL	BOTANICAL NAME	COMMON NAME	INSTALLED SIZE	ROOT	MATURE SIZE	QTY
AF	<i>Acer x freemanii</i> 'Sienna'	Sienna Glen Freeman Maple	2" Cal.	B.B.	50' H x 35' W	14
GB	<i>Ginkgo biloba</i> 'Princeton Sentry'	Princeton Sentry Ginkgo	2" Cal.	B.B.	60' H x 25' W	4
GT	<i>Gleditsia triacanthos</i> var. <i>memis</i> 'Suncole'	Sunburst Honeylocust	2" Cal.	B.B.	35' H x 30' W	7
PA	<i>Picea pungens</i>	Colorado Spruce	6" High	B.B.	40' H x 20' W	14
PC	<i>Pyrus calleryana</i> 'Autumn Blaze'	Autumn Blaze Callery Pear	2" Cal.	B.B.	40' H x 30' W	6
PG	<i>Picea glauca</i> 'Densata'	Black Hills Spruce	6" High	B.B.	35' H x 20' W	6



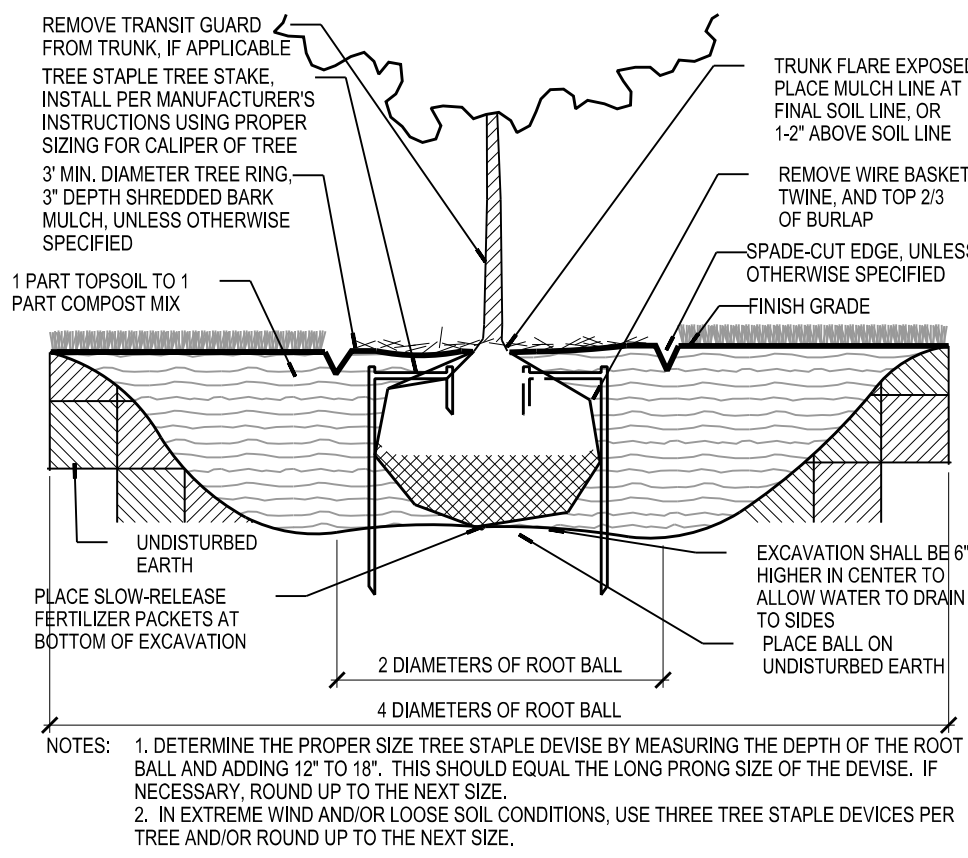
CALL TOLL FREE 1-800-242-8511
 MILWAUKEE AREA 414-259-1181
 FAX A LOCATE 1-800-338-3860
 TDD (HEARING IMPAIRED) 1-800-542-2289
 ONLINE: www.DiggersHotline.com

WISCONSIN STATUTE 182.0175 (1974) REQUIRES A MINIMUM OF THREE (3) WORKING DAYS NOTICE PRIOR TO EXCAVATION.

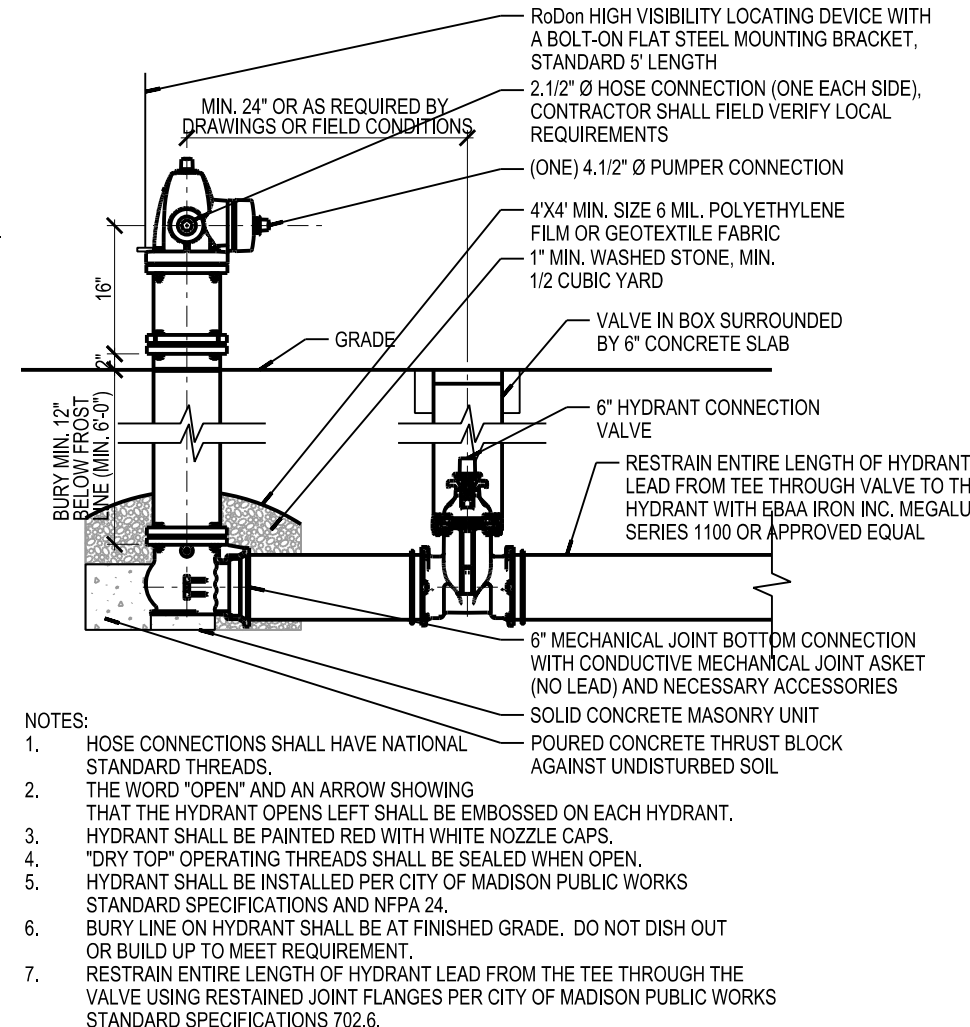


SCALE: 1"=30'-0"
 PLOTTED BY: KAU

13 B.B. SHRUB AND TREE PLANTING DETAIL
 C201 SCALE: NONE



09 FIRE HYDRANT DETAIL
 C201 SCALE: 1/2"=1'-0"



- KEYNOTES**
- 01 NEW BITUMINOUS PAVEMENT
 - 02 NEW 3" THICK WASHED STONE MULCH STRIP, 3'-0" WIDE ON WEST SIDE AND 12" WIDE ON NORTH AND SOUTH WALLS. PROVIDE WEED BARRIER FABRIC AND BLACK ROCK FLOOR EDGING.
 - 03 NEW CONCRETE APRON
 - 04 NEW ELECTRIC METER
 - 05 NEW GAS METER
 - 06 NEW TRANSFORMER
 - 07 NEW FIRE DEPARTMENT CONNECTION WITH HORN AND STROBE
 - 08 NEW FIRE HYDRANT
 - 09 NEW THRUST BLOCKING, TYPICAL
- GENERAL NOTES**
- 1. ALL AREAS SHALL BE SEEDED LAWN UNLESS OTHERWISE NOTED.
 - 2. ALL OCCASIONAL TREES SHALL RECEIVE 4'-0" DIAMETER SHREDDED BARK MULCH TREE RING (3" THICK) WITH SPADE-CUT EDGE.
 - 3. ALL EVERGREEN TREES SHALL RECEIVE 6'-0" DIAMETER SHREDDED BARK MULCH TREE RING (3" THICK) WITH SPADE-CUT EDGE.
 - 4. SEE DETAIL 13C201 FOR TREE PLANTING DETAIL.
 - 5. CONTRACTOR SHALL VERIFY ALL UTILITIES, ELEVATIONS AND DIMENSIONS.
 - 6. GAS LATERAL SHALL CONNECT WITH SOUTH POINT MAIN (APPROXIMATELY 975 LINEAR FEET). CONTRACTOR SHALL COORDINATE WITH UTILITY.

SITE LAYOUT, UTILITY AND LANDSCAPE PLAN
 SCALE: 1"=30'-0"

Due to electronic distribution, this drawing may not be printed to the scale indicated on the drawings. Do NOT use scale to determine dimensions or sizes.

PROJECT NUMBER: 48150
 APPROVED BY: [Signature]
 REVIEWED BY: [Signature]
 DRAWN BY: KAU
 2/7/2012 1:27:17 PM

ISSUANCES

REVISIONS

ANGUS YOUNG
 Architecture
 Engineering
 Interior Design
 Balance in Creativity
 555 South River Street, Janesville, WI 53548-4783
 Ph: 608.756.2326 Fax: 608.756.0464
 www.angusyong.com

Copyright © 2012 Angus-Young Associates, Inc. All Rights Reserved

STREETS DEPARTMENT
 NEW WARM STORAGE BUILDING
 CITY OF MADISON
 MADISON, WISCONSIN

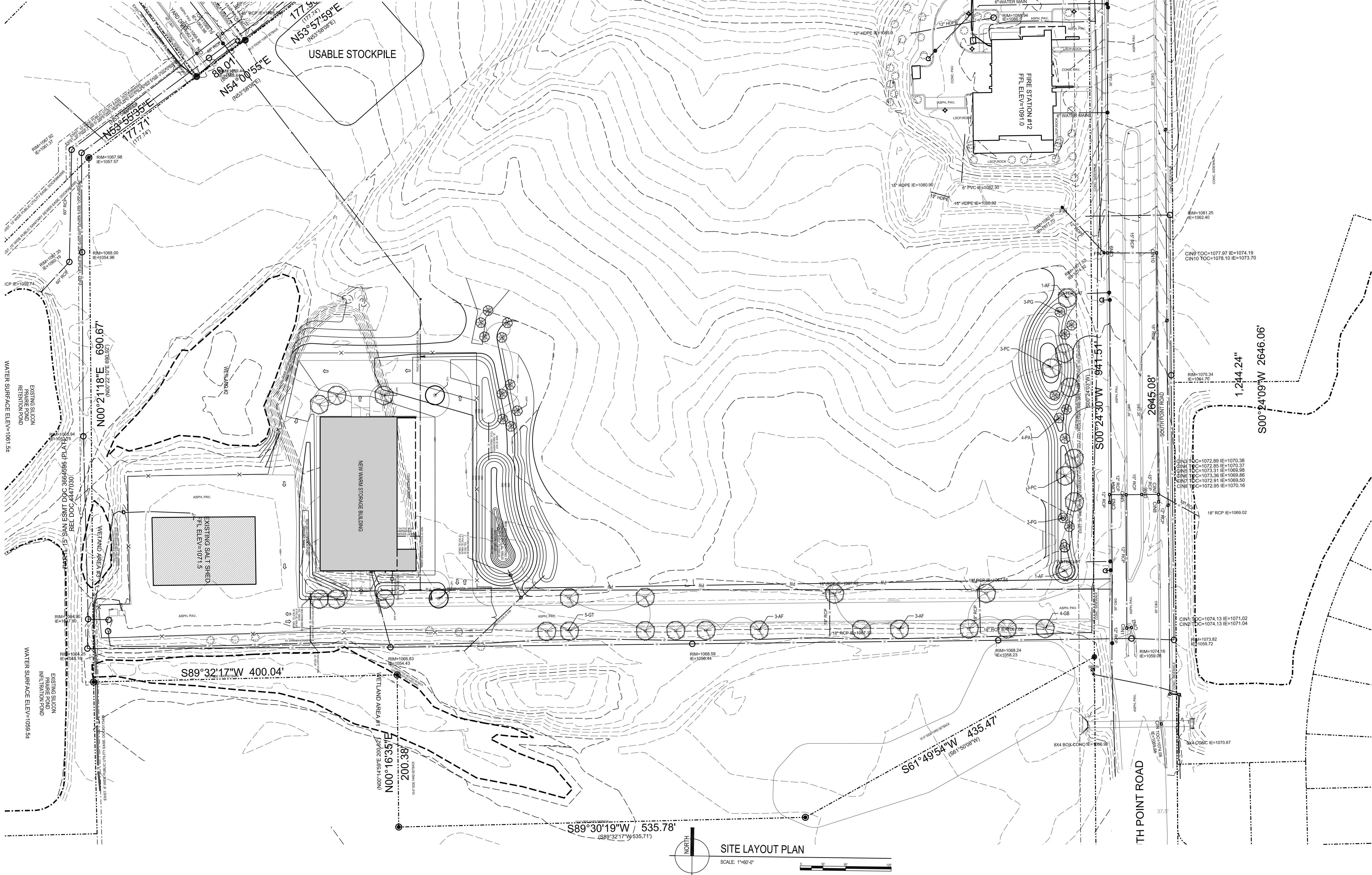
SITE LAYOUT, UTILITY AND LANDSCAPE PLAN

C201

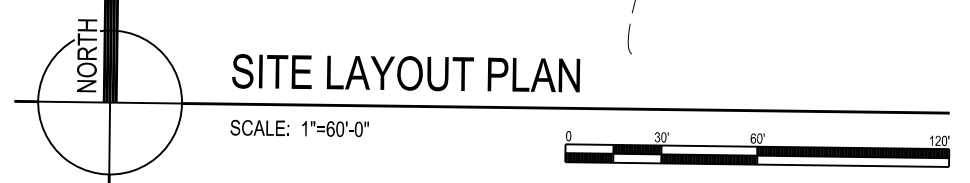
PRELIMINARY - NOT FOR CONSTRUCTION

LANDSCAPE PLANT LEGEND

SYMBOL	BOTANICAL NAME	COMMON NAME	INSTALLED SIZE	ROOT	MATURE SIZE	QTY
AF	<i>Acer x freemanii</i> 'Sienna'	Sienna Glen Freeman Maple	2" Cal.	B.B.	50' H x 35' W	14
GB	<i>Ginkgo biloba</i> 'Princeton Sentry'	Princeton Sentry Ginkgo	2" Cal.	B.B.	60' H x 25' W	4
GT	<i>Gleditsia triacanthos</i> var. <i>inermis</i> 'Suncole'	Sunburst Honeylocust	2" Cal.	B.B.	35' H x 30' W	7
PA	<i>Picea pungens</i>	Colorado Spruce	6" High	B.B.	40' H x 20' W	14
PC	<i>Pyrus calleryana</i> 'Autumn Blaze'	Autumn Blaze Callery Pear	2" Cal.	B.B.	40' H x 30' W	6
PG	<i>Picea glauca</i> 'Densata'	Black Hills Spruce	6" High	B.B.	35' H x 20' W	6



ORIGINAL SIZE: 24" x 36"
 X:\4150\Draw\4150052110.dgn
 SCALE: 1"=60'-0"
 PLOTTED BY: KMMU



Due to electronic distribution, this drawing may not be printed to the scale indicated on the drawings. Do NOT use scale to determine dimensions or sizes.

ANGUS YOUNG
 Architecture
 Engineering
 Interior Design
 Balance in Creativity
 555 South River Street, Janesville, WI 53548-4783
 Ph: 608.756.2326 Fax: 608.756.0454
 www.angusyoung.com

STREETS DEPARTMENT
NEW WARM STORAGE BUILDING
CITY OF MADISON
MADISON, WISCONSIN

PROJECT NUMBER: 48150
 APPROVED BY: [Signature]
 REVIEWED BY: [Signature]
 DRAWN BY: J.L.H.
 2/7/2012 1:20:18 PM

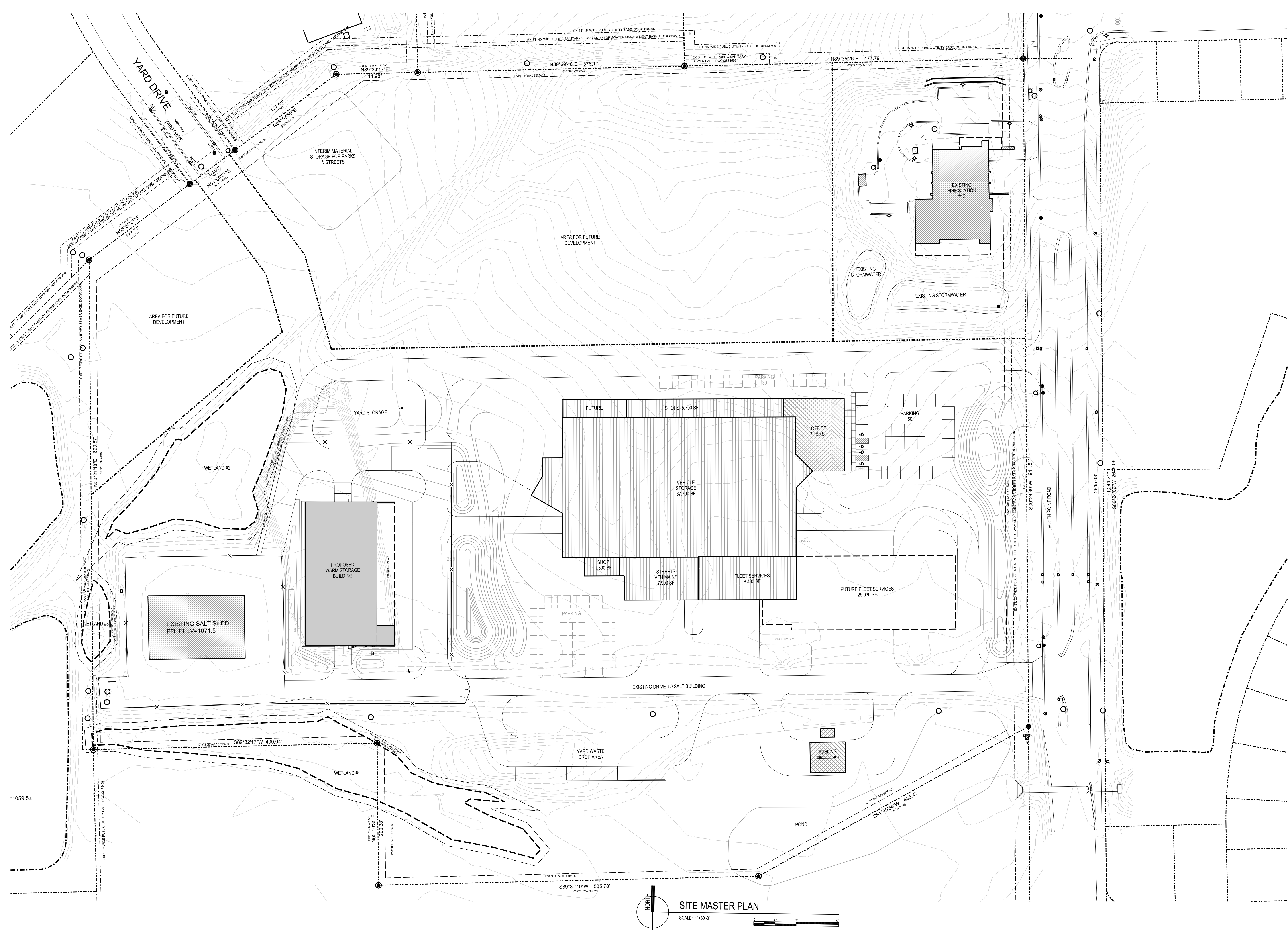
ISSUANCES
 REVISIONS

C101

PRELIMINARY - NOT FOR CONSTRUCTION

ORIGINAL SIZE: 24" x 36"
 X:\4150\04\415004\10.dgn

SCALE: 1"=60'-0"
 PLOTTED BY: KAMU



SITE MASTER PLAN
 SCALE: 1"=60'-0"

Due to electronic distribution, this drawing may not be printed to the scale indicated on the drawings. Do NOT use scale to determine dimensions or sizes.

PROJECT NUMBER: 48150
 APPROVED BY: [Signature]
 REVIEWED BY: [Signature]
 DRAWN BY: J.L.H.
 2/7/2012 1:20:15 PM

STREETS DEPARTMENT
NEW WARM STORAGE BUILDING
CITY OF MADISON
MADISON, WISCONSIN

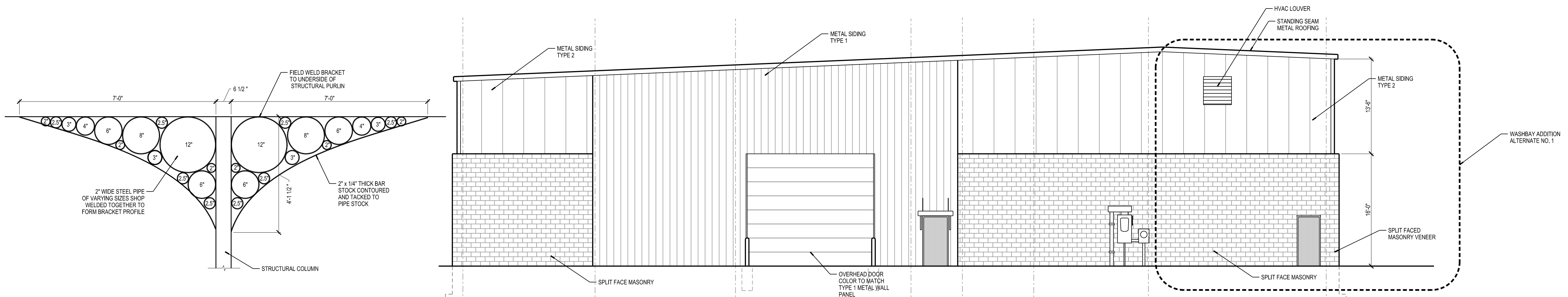
Angus Young
 Architecture
 Engineering
 Interior Design
Balance in Creativity
 555 South River Street, Jessamine, WI 53548-4783
 Ph: 608.756.2326 Fax: 608.756.0454
 www.angusyoung.com

ISSUANCES	REVISIONS

Copyright © 2012 Angus-Young Associates, Inc. All Rights Reserved

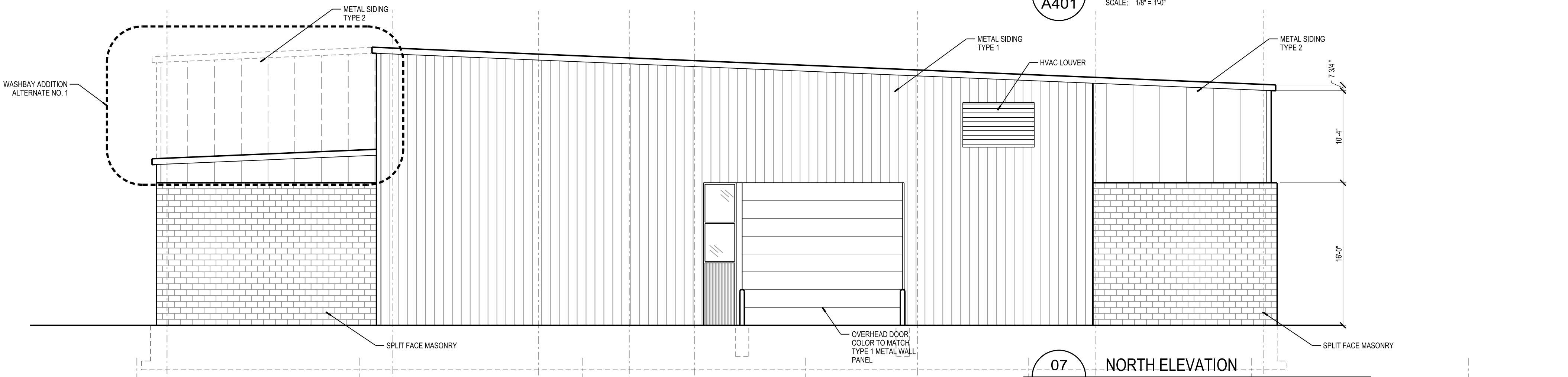
PRELIMINARY - NOT FOR CONSTRUCTION

C100

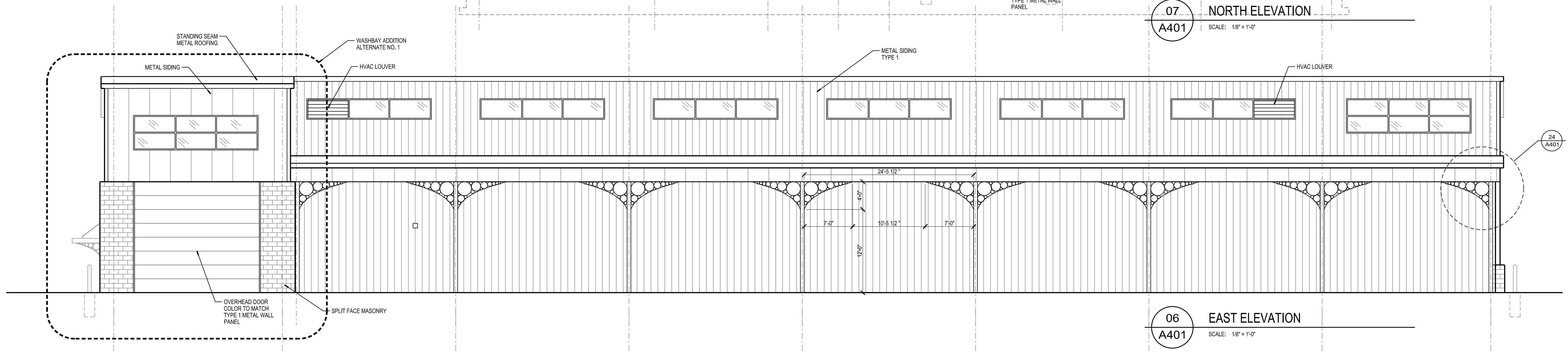


24
A401 DECORATIVE BRACKET DETAIL
SCALE: 1/2"=1'-0"

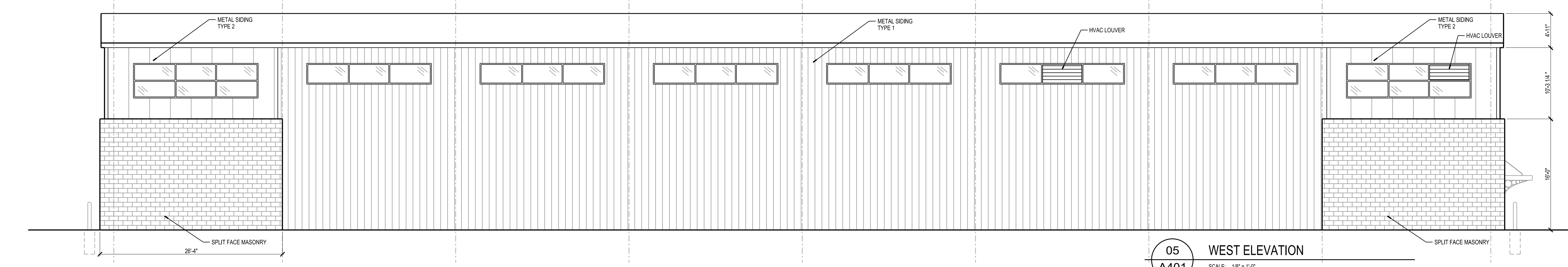
08
A401 SOUTH ELEVATION
SCALE: 1/8"=1'-0"



07
A401 NORTH ELEVATION
SCALE: 1/8"=1'-0"



06
A401 EAST ELEVATION
SCALE: 1/8"=1'-0"



05
A401 WEST ELEVATION
SCALE: 1/8"=1'-0"

SCALE: 1/8"=1'-0"
KIMU

ORIGINAL SIZE: 24" x 36"
X:\4150\Drawings\1506\A401.dgn

Due to electronic distribution, this drawing may not be printed to the scale indicated on the drawings. Do NOT use scale to determine dimensions or sizes.

ISSUANCES	REVISIONS

Angus Young
Architecture
Engineering
Interior Design
Balance in Creativity
555 South River Street, Janesville, WI 53548-4783
Ph: 608.756.2326 Fax: 608.756.0464
www.angusyoung.com

STREETS DEPARTMENT
NEW WARM STORAGE BUILDING
CITY OF MADISON
MADISON, WISCONSIN

PROJECT NUMBER: 48150
APPROVED BY:
REVIEWED BY:
DRAWN BY: JLH
2/7/2012 1:20:13 PM

WARM STORAGE
EXTERIOR ELEVATIONS
ALTERNATE #1
W/ WASH BAY
A401

PRELIMINARY - NOT FOR CONSTRUCTION

DESCRIPTION

The Lumark Wal-Pak Series of wall luminaires provides traditional architectural style with high performance energy efficient illumination. Rugged die-cast aluminum construction, stainless steel hardware along with a sealed and gasketed optical compartment make the Wal-Pak virtually impenetrable to contaminants. IP65 Rated. Six available lamp sources including patent pending energy efficient LED, pulse start metal halide, compact fluorescent, ceramic metal halide, standard metal halide and high pressure sodium. UL and cUL wet location listed. The Wal-Pak wall luminaire is ideal for pathway illumination, building entrances, vehicle ramps, schools, tunnels, stairways and loading docks.

SPECIFICATION FEATURES

Housing

Rugged one-piece die-cast aluminum housing and hinged, removable die-cast aluminum door. One-piece silicone gasket seals the optical chamber. UL 1598 wet location listed and IP65 ingress protection rated. Not recommended for car wash applications.

Electrical

Ballasts, LED driver and related electrical components are hard mounted to the die-cast housing for optimal heat sinking and operating efficiency. Wiring is extended through a silicone gasket at the back of the housing. Three 1/2" threaded conduit entry points allow for thru-branch wiring. LED thermal management system incorporates both conduction and natural convection to transfer heat rapidly away from LED source. Integral LED electronic driver incorporates internal fusing designed to withstand a 3kV surge test and is Class 2 rated for 120-277V with an operating temperature of -30° to 60°C. Wal-

Pak LED systems maintain greater than 70% of the initial light output after 50,000 hours of operation. UL listed HID high power factor ballasts are Class H insulation rated (metal halide: 150, 175, 200, 250, 320, 350, 400W [-30°C / -20°F], (high pressure sodium: 50, 70, 100, 150, 250, 400W [-40°C / -40°F]. High efficiency HID ballasts are available in 120V, 208V, 240V, 277V, 347V and 480V. Compact fluorescent high power factor ballasts are Class P insulation rated for 120-277V and have a starting temperature of -18°C / 0°F.

Optical

Highly reflective anodized aluminum reflectors provide high efficiency illumination. Optical assemblies include impact resistant borosilicate refractive glass, Solite™ flat diamond patterned glass and full cutoff IESNA compliant configurations. Patent pending, solid state LED luminaires are thermally optimized with 2400 or 4000 lumen package modules. HID models are offered in horizontal medium or mogul-based

Catalog #		Type	
Project		OA	
Comments		Date	
Prepared by			

metal halide [MH / MP] or high pressure sodium [HP] lamps. T6 ceramic metal halide [CM] and 4-pin compact fluorescent [CF] lamp models offer high efficiency energy saving illumination.

Door Assembly

Single point, captive stainless steel hardware secures the removable hinged door allowing for ease of installation and maintenance. Door assembly is hinged at the bottom for easy removal, installation and re-lamping.

Finish

Housing and door are protected with 5-stage TGIC dark bronze polyester powder coat paint. Premium TGIC power coat finishes withstand extreme climate changes while providing optimal color and gloss retention. Optional premium colors are available.



WP WAL-PAK

2400 - 4000 Lumen LED
39 - 400W

High Pressure Sodium
Pulse Start Metal Halide
Metal Halide

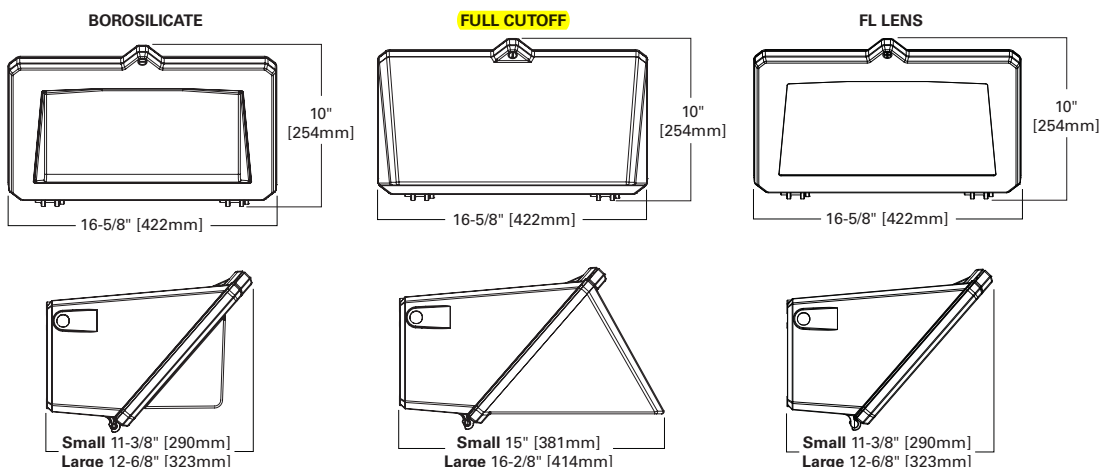
Ceramic Metal Halide
32 - 140W

Compact Fluorescent



WALL MOUNT LUMINAIRE

DIMENSIONS



TECHNICAL DATA

UL and cUL Wet Location Listed
IP65 Rated
40°C Maximum Ambient Temperature
External Supply Wiring 90°C Minimum
EISA @, ARRA, Title 20 Compliant
LM79 / LM80 Compliant

ENERGY DATA

Reactor Ballast Input Watts

50W HPS NPF (58 Watts)
70W HPS NPF (82 Watts)
100W HPS NPF (118 Watts)
150W HPS NPF (175 Watts)

High Reactance Ballast Input Watts

50W MP HPF (69 Watts)
70W MP HPF (94 Watts)
100W MP HPF (129 Watts)
150W MP HPF (185 Watts)

CWA Ballast Input Watts

200W HPS HPF (250 Watts)
200W MP HPF (227 Watts) @
250W MP HPF (283 Watts) @
320W MP HPF (365 Watts)
350W MP HPF (400 Watts) @
400W HPS HPF (465 Watts)
400W MP HPF (452 Watts) @

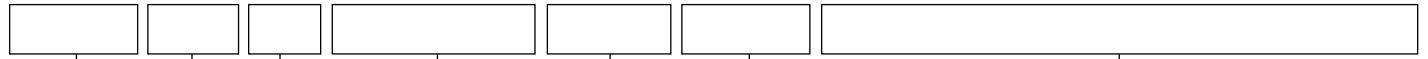
SHIPPING DATA

Approximate Net Weight:

32-42 lbs. (15-19 kgs.) ADH092103 pc
2010-11-03 17:10:12

ORDERING INFORMATION

Sample Number: MPWP-GL-250-MT-2EM/SC/MR



Lamp Type

- MP=Pulse Start Metal Halide
- HP=High Pressure Sodium
- LD=Solid State Light Emitting Diodes (LED)
- CF=Compact Fluorescent¹
- CM=Ceramic Metal Halide²
- MH=Metal Halide³

Series

WP=Wal-Pak

Door Type⁴

- GL=Borosilicate Glass Door
- FC= Full Cutoff Door
- FL= Flat Solite Glass Door
- PL=Polycarb Refractor Door

Lamp Wattage⁵

- LED
- 2A=(2400 Initial Lumens)
- 4A=(4000 Initial Lumens)
- MP
- 50=50W
- 70=70W
- 100=100W
- 150=150W
- 200=200W
- 250=250W
- 320=320W
- 350=350W
- 400=400W
- MH
- 175=175W
- 250=250W
- 400=400W
- HP
- 50=50W
- 70=70W
- 100=100W
- 150=150W
- 250=250W
- 400=400W
- CM
- 39=39W
- 70=70W
- 100=100W
- 150=150W
- CF
- 32=32W
- 42=42W
- 57=57W
- 70=70W
- 64=(2-32)
- 84=(2-42)
- 114=(2-57)
- 140=(2-70)

Voltage⁶

- 120V=120V
- 208V=208V
- 240V=240V
- 277V=277V
- 347V=347V⁷
- 480V=480V
- DT=Dual-Tap
- MT=Multi-Tap
- TT=Tri-Tap
- 5T=5-Tap
- E= Electronic Ballast⁸
- ED=Electronic LED Driver

Options⁹

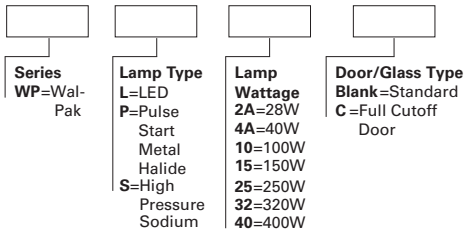
- F1=Single fuse¹⁰
- F2=Double fuse¹⁰
- PE=Photocontrol button¹⁰
- LL=Includes lamp²
- BK=Black housing
- WH=White housing
- GM=Graphite Metallic housing
- AP=Grey housing
- DP=Dark Platinum housing
- DIMA=CF Dimming Ballast¹¹
- DIMB=CF Dimming Ballast¹¹
- SGL=Solite Glass Lens¹²
- Q=Quartz Restrike T4 Lamp¹³
- EM=Emergency Quartz Restrike T4 Lamp with Time Delay Relay¹³
- EM/SC=Emergency Separate Circuit T4 Lamp¹³
- QMR=Emergency Back-Up 1-MR16 Lamp^{14,15}
- 2QMR=Emergency Back-Up 2-MR16 Lamps^{14,15}
- 2QMR/SC=Emergency Back-Up MR16 and EM separate circuit 2-MR16 Lamp^{14,16}
- EMMR=Emergency Back-Up 1-MR16 Lamp with Time Delay Relay^{14,15}
- 2EMMR=Emergency Back-Up 2-MR16 Lamps with Time Delay Relay^{14,15}
- 2EMMR/SC=Emergency Back-Up 1-MR16 Lamp with Time Delay Relay and EM Separate Circuit^{14,15,16}
- EM/SC/MR=Emergency Back-Up Separate Circuit 1-MR16 Lamp^{14,15,16}
- 2EM/SC/MR=Emergency Back-Up Separate Circuit 2-MR16 Lamps^{14,15,16}
- EM/SC/12V=Emergency Separate Circuit 12V 1-MR16 Lamp^{14,16,17}
- 2EM/SC/12V=Emergency Separate Circuit 12V 2-MR16 Lamps^{14,16,17}
- EMI40=Emergency Cold Temperature UL 924 CF Power Pack 1 Lamp¹⁸
- EMI40/2L=Emergency Cold Temperature UL 924 CF Power Pack 2 Lamp¹⁸
- CF-EM=Emergency UL924 CF Power Pack 1 Lamp¹⁹
- CF-EM/2L=Emergency UL924 CF Power Pack 2 Lamp¹⁹
- EMLED-CD=LED Battery Back-Up Cold Temperature²⁰

Accessories²¹

- WG/WPGL=Wire Guard Borosilicate Glass Lens Door
- WG/WPFC=Wire Guard Full Cutoff Door
- WG/WPFL=Wire Guard FL Lens Door
- TR/WP=Tamper Resistant Screw and Bit
- VS/WPGL=Polycarbonate Vandal Shield for Borosilicate Glass Lens Door

STOCK SAMPLE NUMBER - LAMP INCLUDED

SAMPLE NUMBER: WPP40C



Series

WP=Wal-Pak

Lamp Type

- L=LED
- P=Pulse Start Metal Halide
- S=High Pressure Sodium

Lamp Wattage

- 2A=28W
- 4A=40W
- 10=100W
- 15=150W
- 25=250W
- 32=320W
- 40=400W

Door/Glass Type

- Blank=Standard Door
- C=Full Cutoff Door

NOTES: Options not available with stock products. Refer to standard order information to add options. MT is standard. Lamp Type: MP not available in 100W. HPS not available in 320W. Borosilicate glass door is standard. 2A and 4A models available in LED only. LED models are 120-277V.

BUG RATING	B	U	G	B	U	G
Borosilicate Glass Door (GL)						
LDWP-GL-2A-ED	0	3	2	Flat Lens Door (FL)		
LDWP-GL-4A-ED	1	3	2	LDWP-FL-2A-ED	0	2
				LDWP-FL-4A-ED	0	3
Polycarbonate Lens (PL)				Full Cutoff Door (FC)		
LDWP-PL-2A-ED	0	3	2	LDWP-FC-2A-ED	0	1
LDWP-PL-4A-ED	1	3	2	LDWP-FC-4A-ED	0	1

For more information on the IES BUG (Backlight-Uplight-Glare) Rating visit www.iesna.org/PDF/Erratas/TM-15-07BugRatingsAddendum.pdf

- NOTES: 1 CF Single lamp offered in all door configurations. CF dual lamp models not offered with FL door type. 70W models not available with EMI40-2L, CF-EM, CF-EM-2L. CF not available in 347V.
- 2 All CM models offered with T6 envelope G12 lamp base. T6 Lamp included with CM models. Order LL with CM models. Ceramic Metal Halide (CM) is available with (MP) pulse start metal halide or E - Electronic Ballast. 400W MP must be ordered with LL option to be Title 20 Compliant.
- 3 MH products available for non-US markets only.
- 4 Small housing offered for 175W and below, CF and LD models. Large housing for 200W-400W. FL door not available with CF or 200-400W models. Polycarbonate lens available in models up to 175W max including LD. Polycarbonate lens not available with full cutoff door or FL models. Solite stipple glass is standard for FL lens. Clear glass is standard for full cutoff door types except for LD. LD full cutoff door is standard with solite glass.
- 5 LD nominal initial lumens prior to optical and configuration losses based on 67 CRI/5000K package at 25°C ambient. MH and MP 175W and below are medium base all others are mogul base. CF 64, 84, 114 and 140 models are offered in borosilicate glass and full cutoff doors only. In cold temperatures, compact fluorescent lamps produce lower illumination levels. CF 140 models and 400W HPS rated for 25°C.
- 6 See Voltage Chart for descriptions. 5T available in 400W MH models only. 90°C Rated wire required for thru-branch wiring for units 175W and lower. 105°C Rated wire required for thru-branch wiring for units 200W and higher. Thru-branch wiring is rated for 40°C for LD and 175W and below. Higher wattage thru-branch wiring is rated for use in 25°C ambient operating environments.
- 7 347V not available with thru-branch wiring. For 347 or 480V LD specify voltage. ED will be supplied with integral step down transformer. 347V not available with CF lamps.
- 8 Available with 70-150W MP or CM lamps. E is standard for all CF models. All electronic ballasts are universal 120-277V.
- 9 Not all options can be combined. Only one emergency or battery back-up option available within the fixture. CF Models utilize EMI40, EMI40/2L, CF/EM or CF-EM/2L option for emergency egress. LD Models utilize EM-LED or EMLED-CD options only for battery back-up.
- 10 Must specify voltage. F1=120, 277 or 347V. F2=208, 240 or 480V. PE=120, 208, 240 or 277V.
- 11 DIMA dimming ballast, specify number of lamps, available for 1 or 2-26W or 1-32W, 1-42W. DIMB available for 2-42W, 1-57W or 1-70W.
- 12 SGL optional on HID and CF models only. See note number 4.
- 13 Q or EM not available with LD or E electronic ballast. Q or EM Minimum HID wattage is 70 watts. EM/SC available in 120V only, EM/SC not available with LD. Maximum 100W 120V T4 DC Bayonet Quartz lamp. Lamp supplied by others.
- 14 QMR, 2QMR, EMMR, 2EMMR & 2EMMR/SC not available with LD or E electronic ballast. Minimum HID wattage is 70 watts.
- 15 1 or 2 GU10 base 50W max - 120V Halogen. Lamps supplied by others. EM/SC/MR, 2EM/SC/MR, EM/SC/12V, 2EM/SC/12V not available with LD.
- 16 Emergency lamp leads out of the back of the unit to auxiliary power. Lamps independently wired to separate circuits.
- 17 Low Voltage 1 or 2 GU5.3 MR16 base, 12V DC, 35W max. Lamps supplied by others.
- 18 For use in 25°C ambient operating temperature environments. EMI40, EMI40/2L used for CF lamps. Specify 120 or 277V. EMI40 supports 1-70W CF max, EMI40/2L supports 2-32W CF max. Minimum -18°C/-4°F.
- 19 For use in 25°C ambient operating temperature environments. Specify 120 or 277V. CF-EM supports up to 1-57W CF. CF-EM/2L supports 2-18W CF. 18W lamps supplied by others. Minimum temperature is 0°F/32°C.
- 20 EMLED-CD available with 4A models only. For use in 25°C ambient operating temperature environments. Specify 120 or 277V. EMLED-CD minimum -20°C/-4°F. Battery pack is a UL recognized component.
- 21 Order separately.

VOLTAGE CHART	
DT=Dual-Tap	120/277 (wired 277V)
MT=Multi-Tap	120/208/240/277 (wired 277V)
TT=Tri-Tap	120/277/347 (wired 347V)
5T=5 Tap	120/208/240/277/480 (wired 480V)
E=Electronic Ballast	120-277V (Universal) (50/60 HZ)
ED=Electronic LED Driver	120-277V (Universal) (50/60 HZ)

LAMP TYPE	WATTAGE
Pulse Start Metal Halide	50, 70, 100, 150, 200, 250, 320, 350, 400W
Metal Halide	175, 250, 400W
High Pressure Sodium	50, 70, 100, 150, 250, 400W
T6 Ceramic Metal Halide	39, 70, 100, 150W
Compact Fluorescent	(1) 32, (1) 42, (1) 57, (1) 70, (2) 32, (2) 42, (2) 57, (2) 70
LED	2A (2400 Initial Lumens), 4A (4000 Initial Lumens)