

An Informational Presentation  
To The City of Madison Landmarks Commission  
August 22, 2011



**St. Paul University Catholic Center**

### **St. Paul University Catholic Center**

St. Paul University Catholic Center, a major presence at the University of Wisconsin-Madison for more than 100 years, plans to build a new, modern college facility on the UW campus. The proposed St. Paul University Catholic Center will enable St. Paul's to better serve the university and campus community.

- The new facility will serve as a center of student life on campus, blending residential, faith, community and academic aspects of the university experience.
- The proposed facility is 6 stories tall. Features, based on feedback from students, the City of Madison, and the community, include:
  - A 450-seat multilevel chapel incorporating reclaimed elements of original 1909 chapel
  - A student center with private study space, small- and large-group gathering space, music rooms and offices
  - Office space, including conference and work rooms
  - Dining hall
  - Residential space for priests and visiting scholars
  - Exterior patios overlooking State Street and the interior of the block
- Cost of the new facility is estimated at \$25 million and is expected to come from a small group of benefactors who have long supported projects like this. Groundbreaking is anticipated in the next two to three years.

### **St. Paul's Ministry**

- St. Paul's is the birthplace of the campus Catholic ministry in the United States. UW's Catholic campus ministry was formed in 1883, and graduates who were part of this group started the "Newman Movement," designed to serve Catholics on college campuses. St. Paul's Chapel was built in 1909, the first Catholic chapel built specifically to serve students at a public university. The chapel and student center were renovated in 1967, with a contemporary concrete expression.
- Student involvement in St. Paul's has grown significantly over the past 10 years and is way beyond the ability of the existing facility to meet these expanding needs. The current facility, parts of which date back to the late 1800s, is severely outdated, extremely cramped and in need of major upgrades.
- St. Paul's serves thousands of UW students annually. Approximately 1,000 students attend Sunday Mass, and hundreds are actively involved in other St. Paul programs – ranging from small group sessions to national service projects. Additionally, St. Paul's hosts dances, a theater arts program, a speaker series and concerts designed to appeal to all students and community members, extending the university's reach beyond its campus borders. The new facility will allow for expansion of those programs together with augmented educational programs.

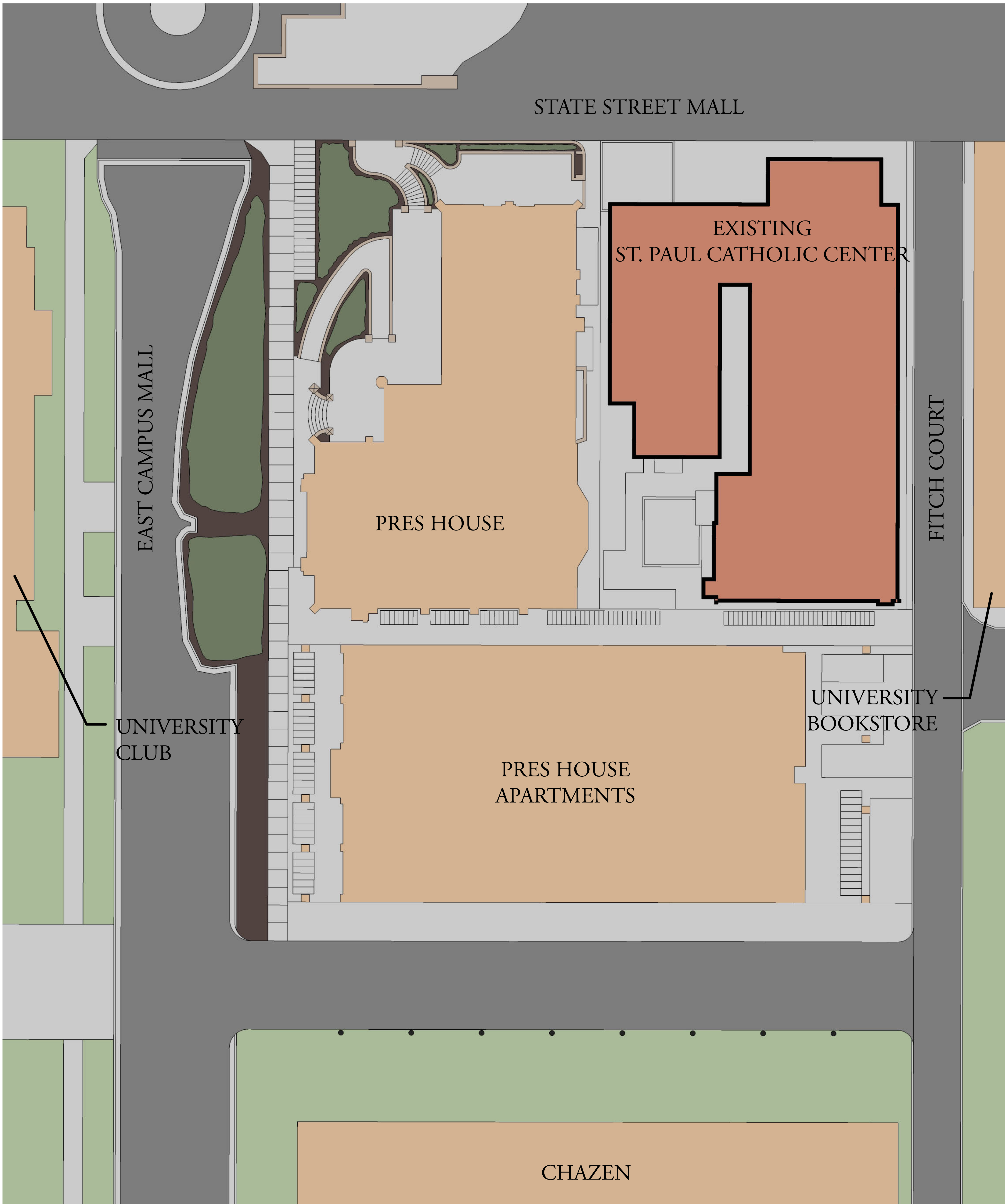
### **St. Paul's Architectural Expression**

- The proposed building design represents a "new classicism", combining traditional Catholic forms and symbolism with a modern energy. It complements the surrounding university buildings, which mix both traditional and contemporary styles of architecture. The State Street church façade acknowledges the scale and character of the adjacent Pres House Church while the façade above steps back to maintain the scenic, uninterrupted views between Bascom Hill and the Capitol Square. The height, mass, style, and detail make an architectural and institutional statement without being over imposing.
- Proposed materials include predominately face brick with natural and cast stone spandrels and trim elements.









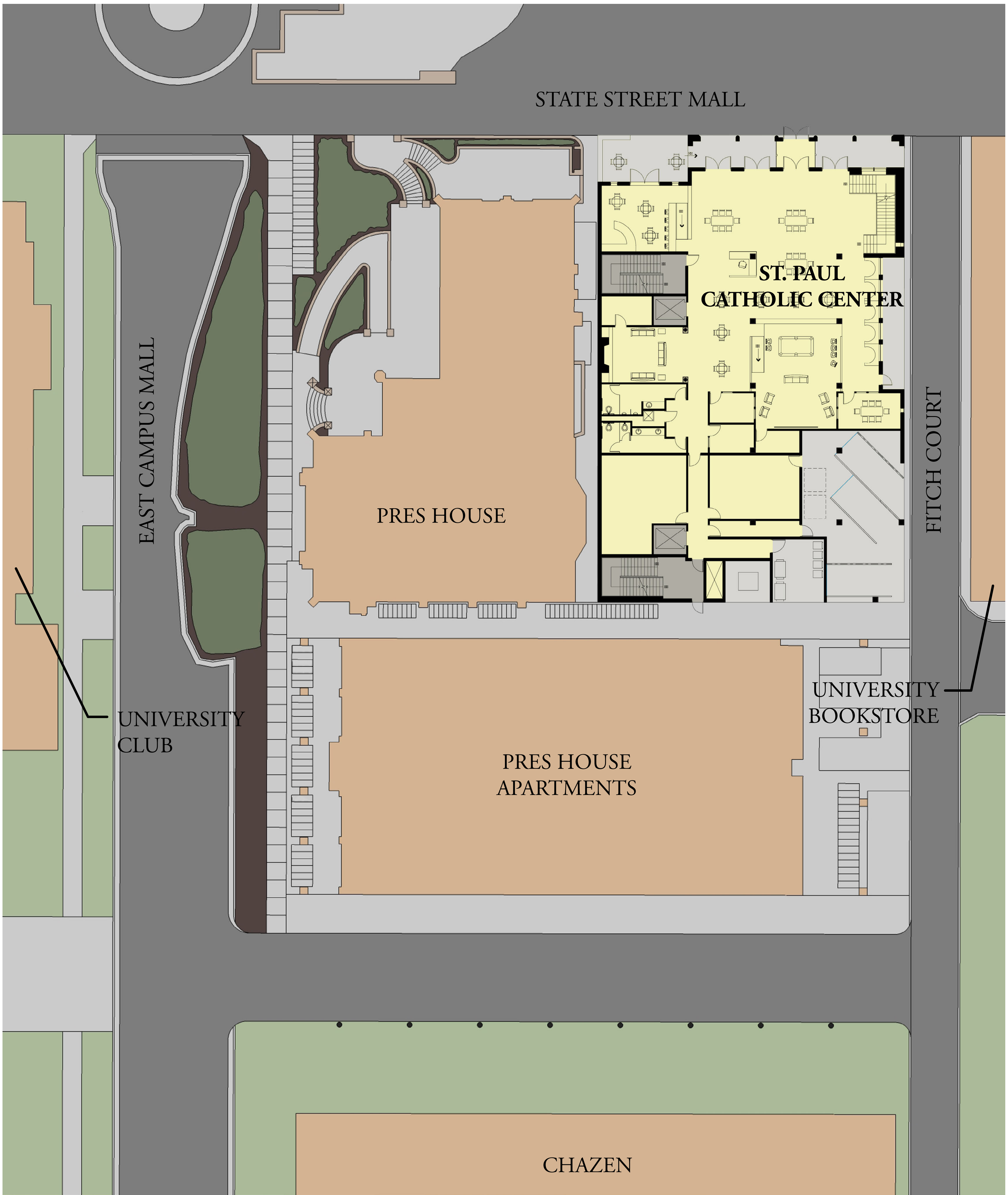
# ST. PAUL University Catholic Center

Existing Site Plan

July 15, 2011







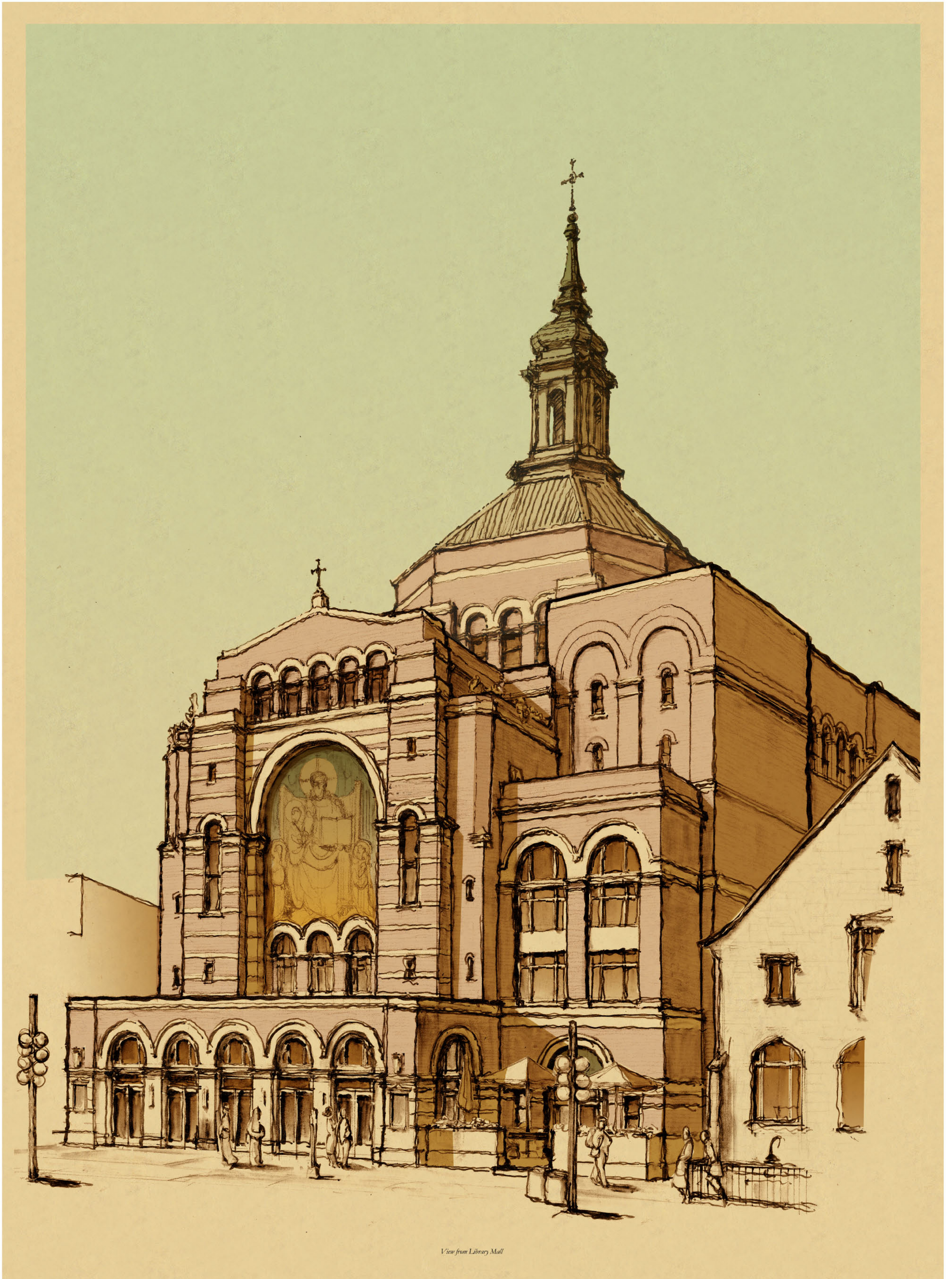
# ST. PAUL University Catholic Center

Site Plan

July 15, 2011

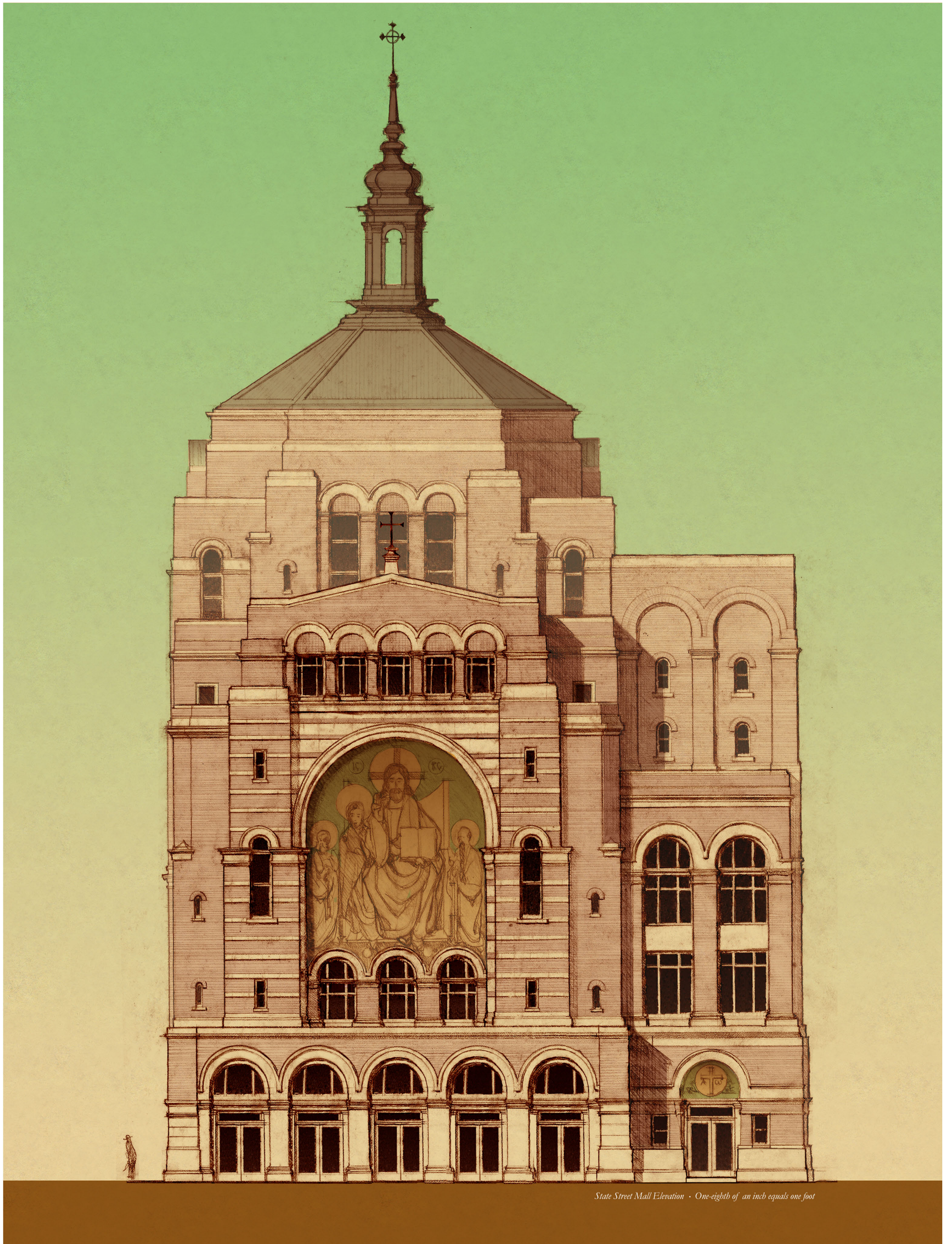






*View from Library Mall*









Fitch Court Elevation • One-eighth of an inch equals one foot















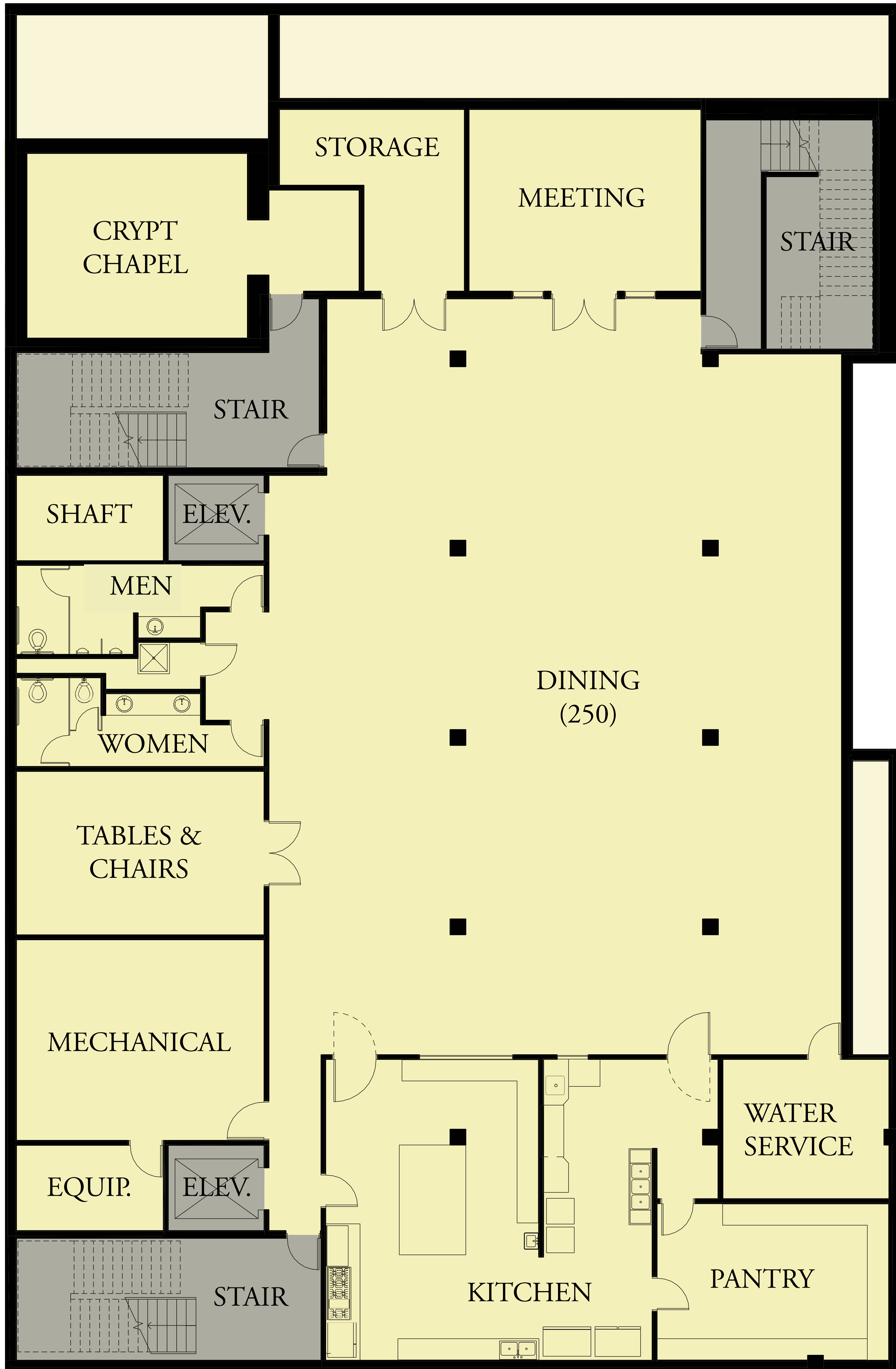


**ST. PAUL** University Catholic Center

View from Fitch Court

July 15 2011



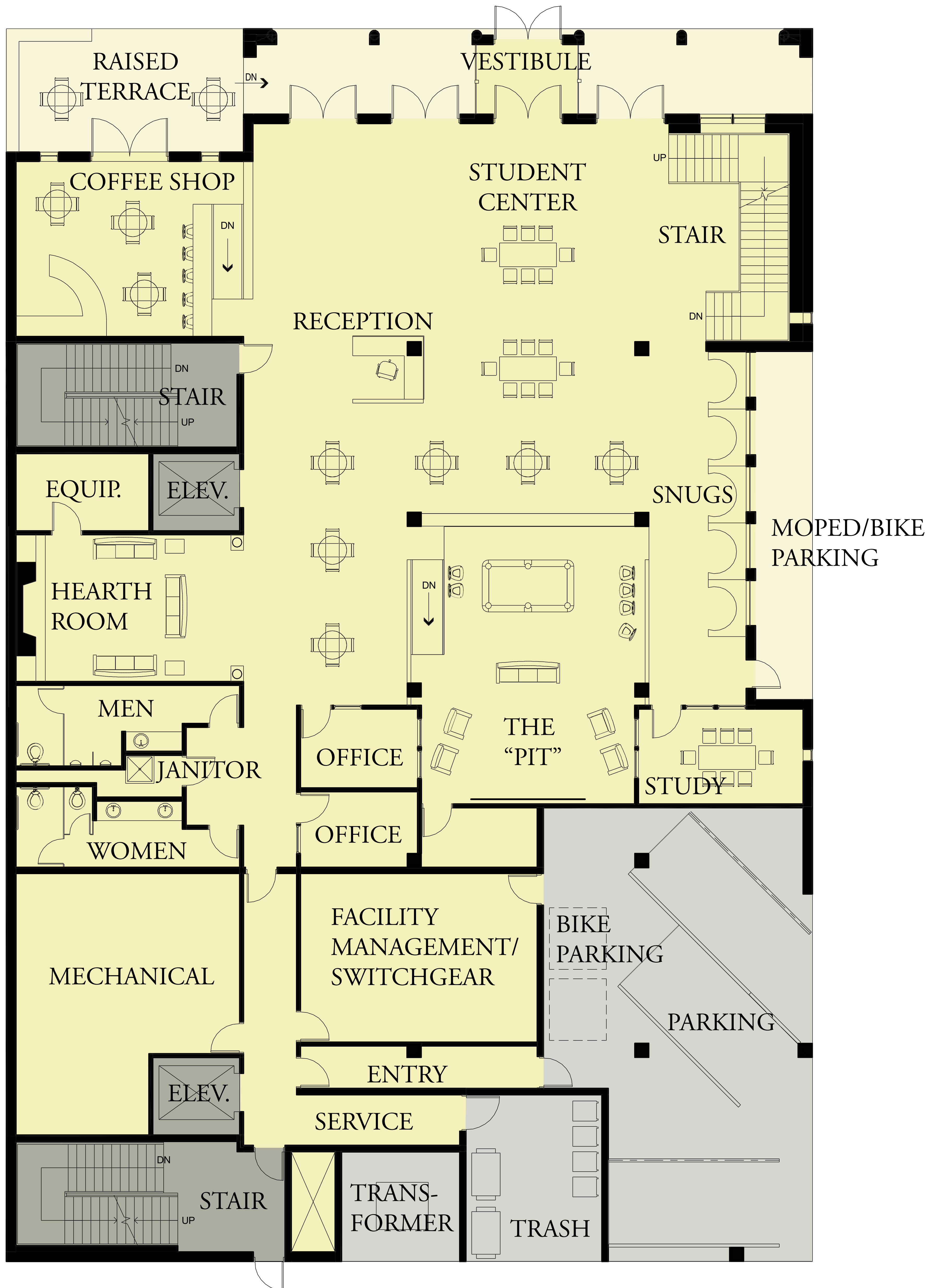


# ST. PAUL University Catholic Center

Level B1 - Basement & Refectory

July 15, 2011



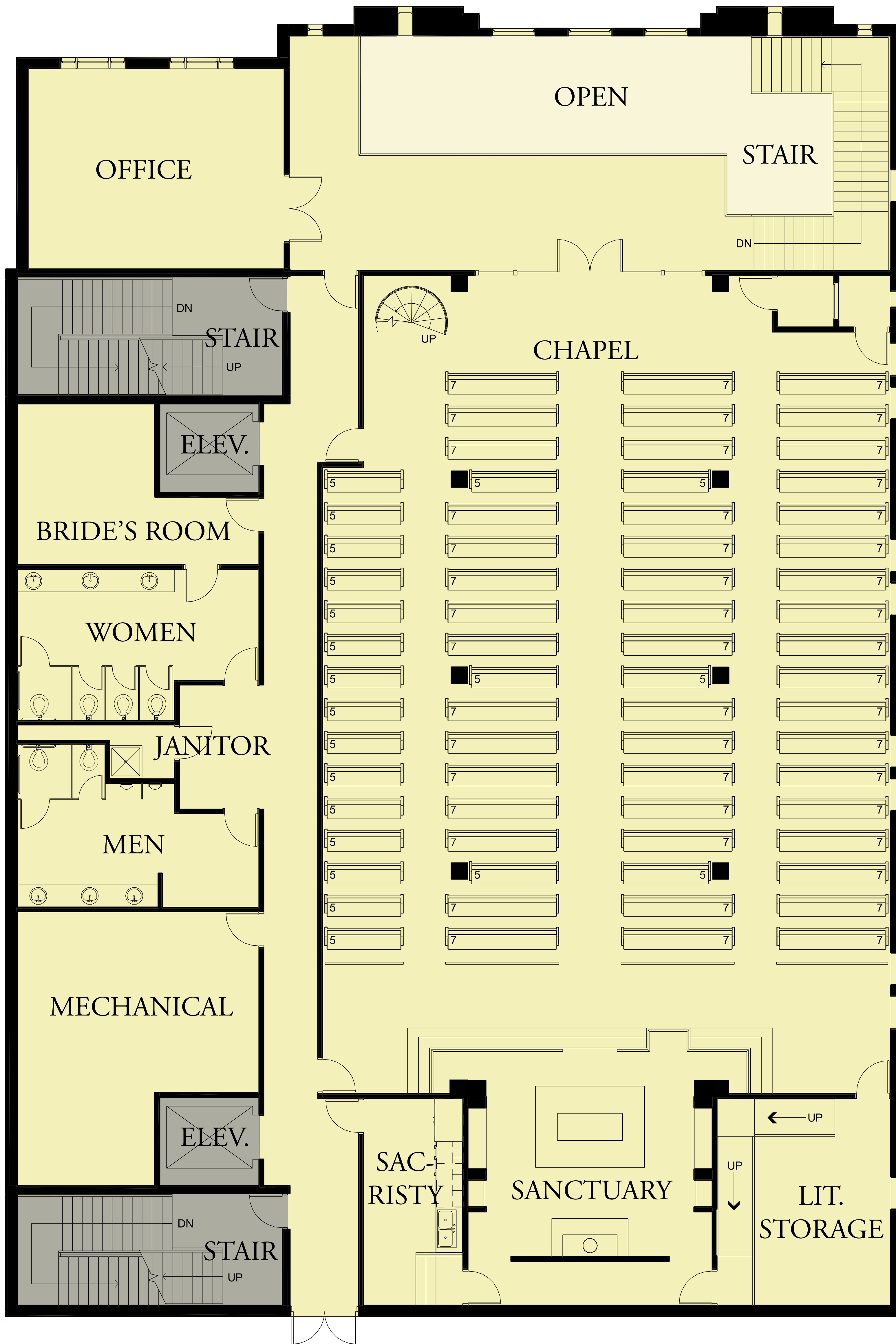


# ST. PAUL University Catholic Center

Level 1 - Student Center

July 15, 2011



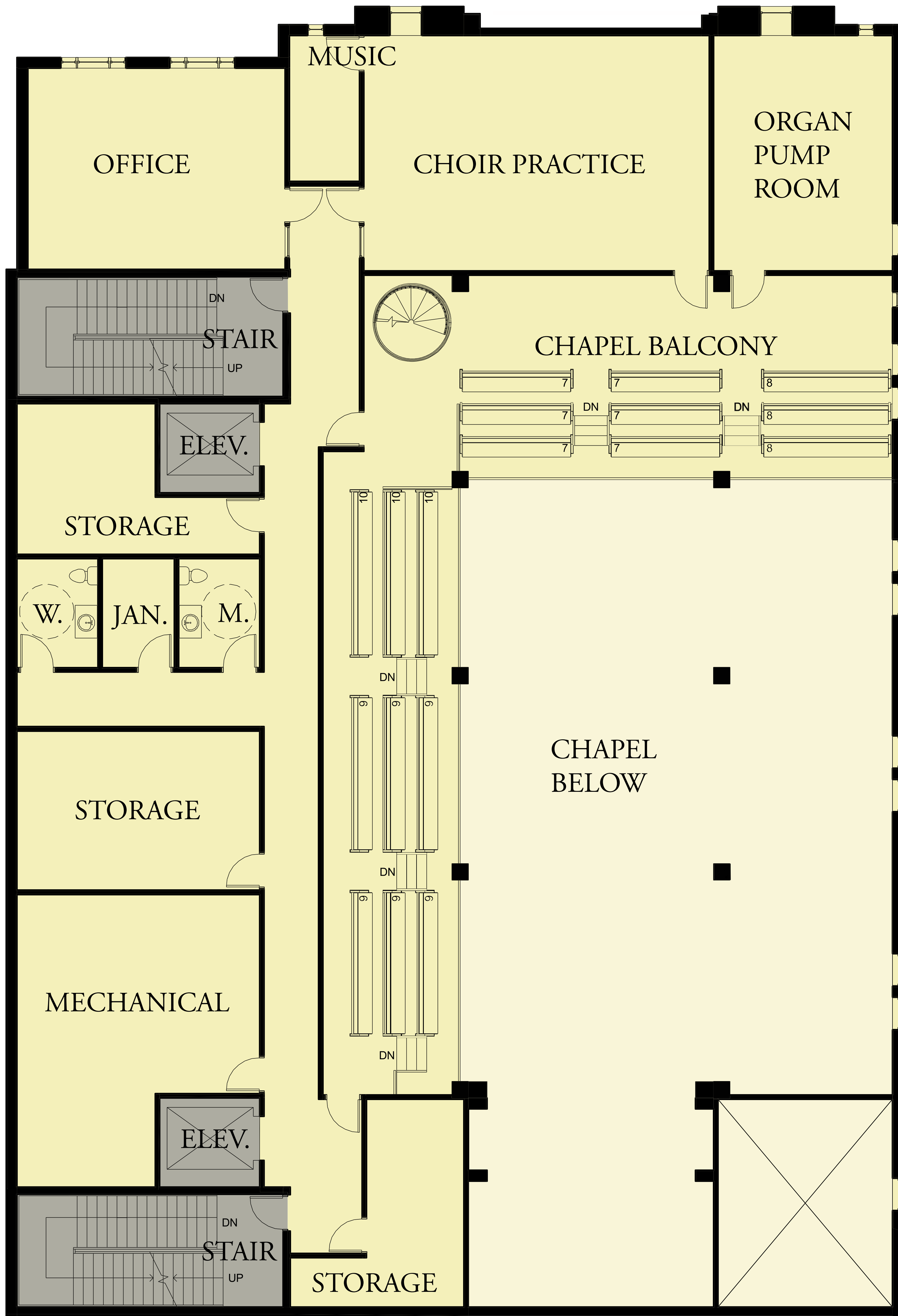


# ST. PAUL University Catholic Center

Level 2 - Chapel

July 15, 2011



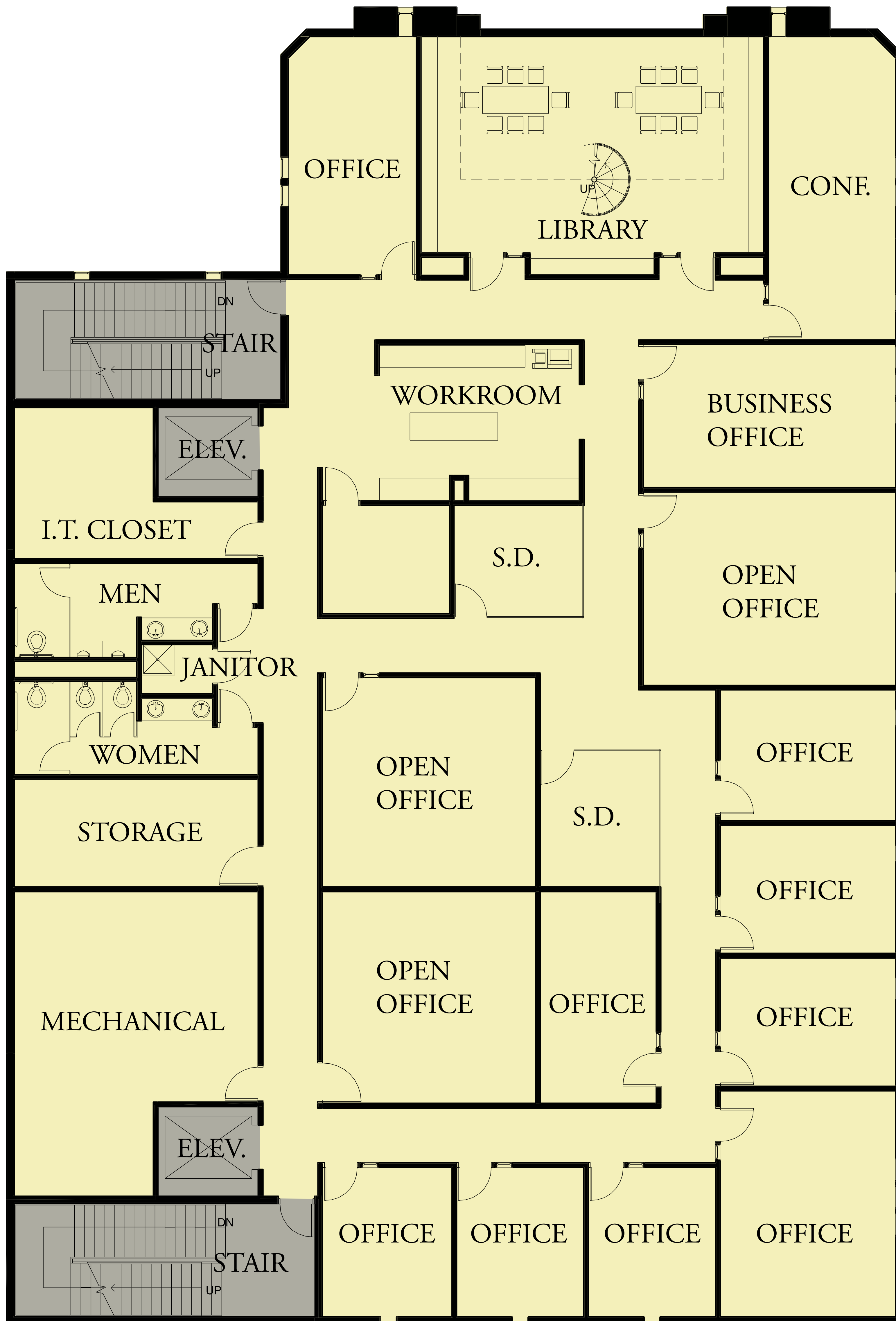


# ST. PAUL University Catholic Center

Level 3 - Chapel Balcony

July 15, 2011





# ST. PAUL University Catholic Center

Level 4 - Administrative Offices

July 15, 2011



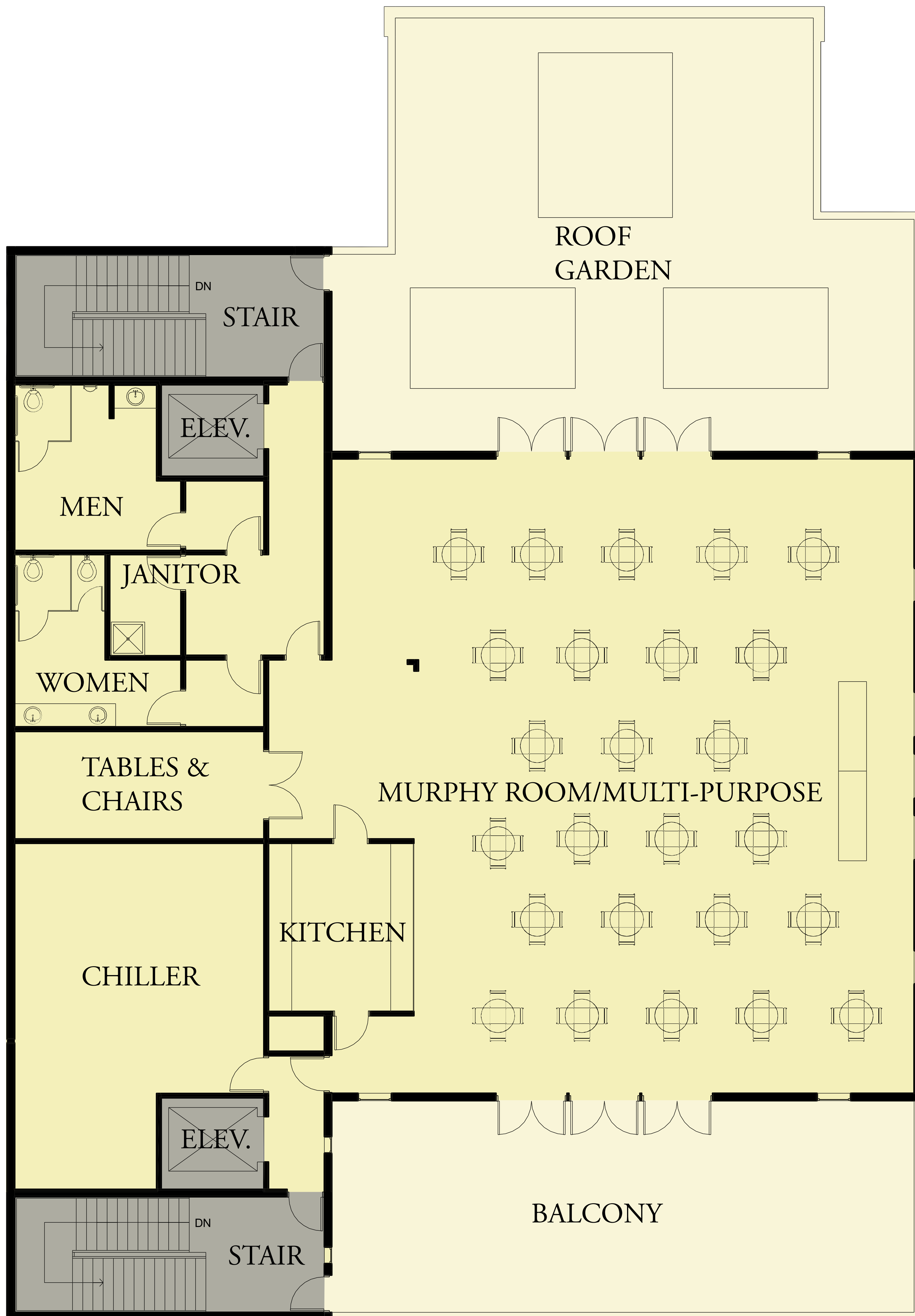


# ST. PAUL University Catholic Center

Level 5 - Apartments/Discernment

July 15, 2011





# ST. PAUL University Catholic Center

Level 6 - Multi-Purpose Conferencing

July 15, 2011