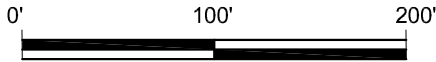


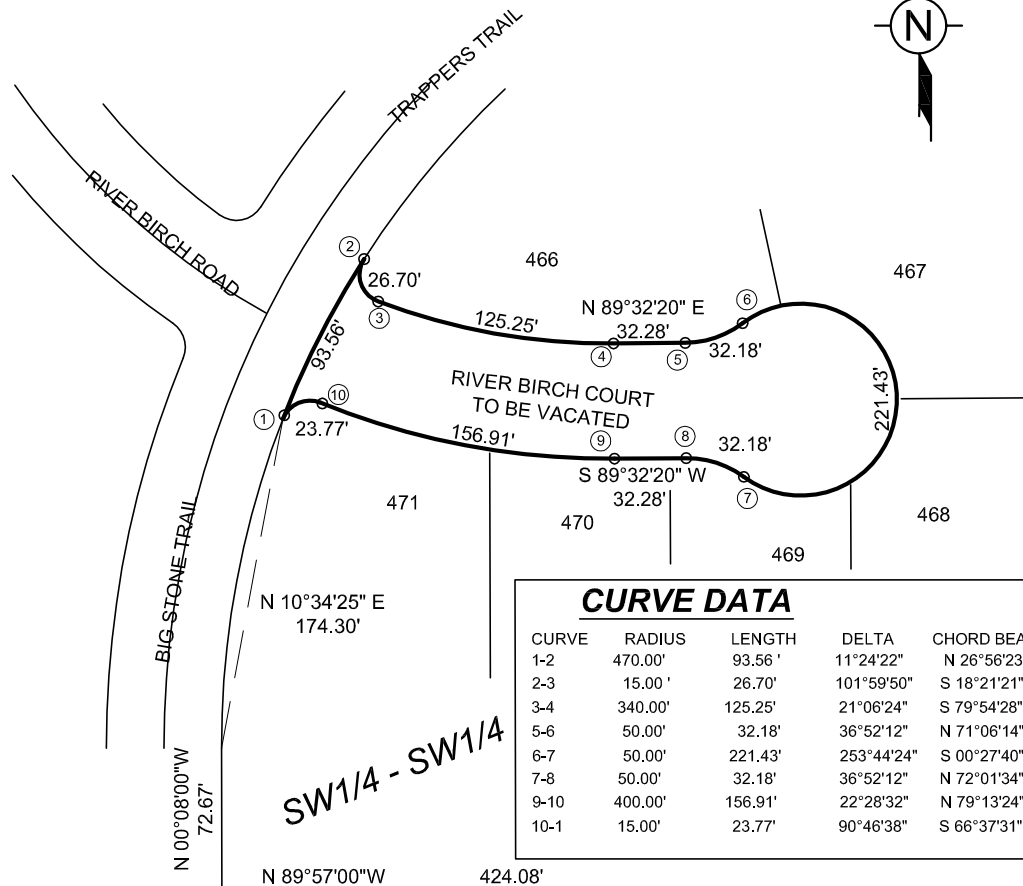
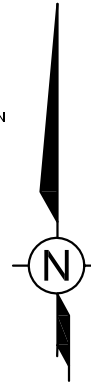
RIVER BIRCH COURT VACATION EXHIBIT

VACATION OF THE RIGHT OF WAY OF RIVER BIRCH COURT AS PLATTED BY
THE EIGHTH ADDITION TO BLACKHAWK SUBDIVISION
LOCATED IN PART OF THE SOUTHWEST QUARTER OF THE SOUTHWEST QUARTER OF SECTION 16,
TOWNSHIP 7 NORTH, RANGE 8 EAST, CITY OF MADISON, DANE COUNTY, WISCONSIN.



MAP SCALE: 1" = 100'

BEARINGS ARE BASED UPON
THE PLAT OF THE EIGHTH ADDITION
TO BLACKHAWK SUBDIVISION AND
THE SOUTH LINE OF THE SW 1/4 OF
SECTION 16 BEARING N89°38'04"E



CURVE DATA					
CURVE	RADIUS	LENGTH	DELTA	CHORD BEARING & LENGTH	
1-2	470.00'	93.56'	11°24'22"	N 26°56'23" E	93.41'
2-3	15.00'	26.70'	101°59'50"	S 18°21'21" E	23.31'
3-4	340.00'	125.25'	21°06'24"	S 79°54'28" E	124.54'
5-6	50.00'	32.18'	36°52'12"	N 71°06'14" E	31.62'
6-7	50.00'	221.43'	253°44'24"	S 00°27'40" E	80.00'
7-8	50.00'	32.18'	36°52'12"	N 72°01'34" W	31.62'
9-10	400.00'	156.91'	22°28'32"	N 79°13'24" W	155.90'
10-1	15.00'	23.77'	90°46'38"	S 66°37'31" W	21.36'

SOUTHWEST CORNER
SECTION 16, T7N, R8E
ALUMINUM MONUMENT FOUND

N 89°38'04" E 1324.02'

SOUTH 1/4 CORNER
SECTION 16, T7N, R8E
ALUMINUM MONUMENT FOUND

Mead & Hunt
Mead & Hunt, Inc.
6501 Watts Road
Madison, WI 53719
608.273.6380
fax: 608.273.6391
www.meadhunt.com