

- CRITERIA NOTES**
- 1 SOFFIT
 - 2 1 1/2" V JOINT IN EPS (TYP)
 - 3 WINDOWS (TYPICAL) 6'-0" WIDE, C-30
 - 4 MECH. LOUVER PAINT TO MATCH COLOR OF PENETRATED EXTERIOR MATERIAL
 - 5 22-GAUGE SHEET METAL CAP ON ALL CHIMNEYS
 - 6 INDIVIDUAL INTERNALLY ILLUMINATED BUILDING SIGN. SIGN TO BE FURNISHED AND INSTALLED BY OTHERS - CONTRACTOR TO PROVIDE POWER TO J-BOX.
 - 7 VTAC GRILLE (TYP.)
 - 8 FTAC GRILLE (TYP.)
 - 9 DOWNSPOUT (TYP.)
 - 10 CONTINUOUS RIDGE VENT (TYP.)
 - 11 EPS RECESS TO MATCH WINDOW SIZE
 - 12 PRECAST CONCRETE WINDOW HEAD
 - 13 PRECAST CONCRETE CAP
 - 14 RELIEF SCUPPER
 - 15 SEE DETAIL 10 ON SHEET 2-20 FOR STAIR DETAILS
 - 16 CONTROL JOINT
 - 17 > 24 GA. PREFINISHED STEEL

EXTERIOR FINISH SCHEDULE

ITEM	MATERIAL	COLOR	GENERAL NOTES
ROOFING	SHINGLES (5)	ANTIQUE SLATE	
GUTTERS	ALUMINUM	WHITE	3
DOWNSPOUTS	ALUMINUM	WHITE	2,3
FASCIA	ALUMINUM	WHITE	4
SOFFIT	VENTED ALUMINUM	WHITE	
WINDOWS	ALUMINUM OR VINYL	WHITE	
CHIMNEY	E.I.F.S. FINISH COAT	E.I.F.S.-1	
CEILING AT ENTRIES	E.I.F.S. FINISH COAT	E.I.F.S.-4	
POOL FENCE	SPILT FACE CMU / ALUMINUM	VARIES	6
HVAC GRILLS	ALUMINUM	VARIES	
RAKE TRIM	WOOD W/ METAL	WHITE	4
METAL ROOF	METAL (6)	CHARCOAL GREY	
PORTE COCHERE COPING	METAL (4)	WHITE	

GRAPHIC EXTERIOR WALL SYSTEM

GRAPHIC	EXTERIOR WALL SYSTEM	GENERAL NOTES
[Pattern]	EPS-1 - MATCH DRYVIT 400 MAJOR WHITE TEXTURE - MATCH DRYVIT SANDPBLE FINE REFER TO DESIGN GUIDELINE SPECIFICATIONS EXTERIOR FINISH INDEX	8
[Pattern]	EPS-2 - MATCH DRYVIT 100 VICTORIAN LACE TEXTURE - MATCH DRYVIT SANDPBLE REFER TO DESIGN GUIDELINE SPECIFICATIONS EXTERIOR FINISH INDEX	8
[Pattern]	BRICK - COPPER/TONE VELOUR UTILITY SIZE BRICK BY ENDICOTT CLAY	
[Pattern]	BLOCK - WESTERN SAND 64-90 SPILT-FACED BLOCK BY COUNTY MATERIALS	
[Pattern]	EPS-3 - MATCH DRYVIT 400 WHITE WHITE - FINE TEXTURE	
GRAPHIC	FTAV/VTAC GRILLE AND INTERGRAL FRAMES	
[Pattern]	FTAV/VTAC GRILLE, RILL WIDTH ARCHITECTURAL LOUVER - WHITE TO MATCH WINDOW COLOR	

- GENERAL NOTES**
- FOR EXTERIOR FINISHES SEE EXTERIOR FINISH INDEX IN PROJECT SPECIFICATIONS.
 - DOWNSPOUT BOOT AND EXPOSED PORTION OF UNDERGROUND STORM SEWER PIPE TO BE PAINTED TO MATCH DOWNSPOUT.
 - GUTTERS SHALL BE PREFINISHED ALUMINUM WITH MINIMUM THICKNESS OF .031, BEVELED PROFILE, SIZED AS REQ'D (3/4" MIN W/4" HIGHER BACK 4 NON-CORROSIVE LEAF SCREEN. DOWNSPOUTS SHALL BE PREFINISHED ALUMINUM WITH MINIMUM THICKNESS OF .021, SIZED AS REQ'D: (3/4" MIN).
 - COLOR TO MATCH PRE-FINISHED GUTTER COLOR.
 - PAINT ALL ROOF TOP MOUNTED DEVICES AND PENETRATIONS TO MATCH ROOF.
 - ALL LOUVERS AND HVAC GRILLES COLOR TO MATCH ADJACENT MATERIAL COLOR EXCEPT WHERE NOTED.
 - ALL ROOF PENETRATIONS ARE TO BE LOCATED ON THE REAR ELEVATION ROOF UNLESS NOTED OTHERWISE.
 - THICKNESS OF EPS UNDER E.I.F.S. SHALL BE 1" UNLESS NOTED THIS "X". SEE ELEVATIONS THIS SHEET AND DETAILS AS NOTED.



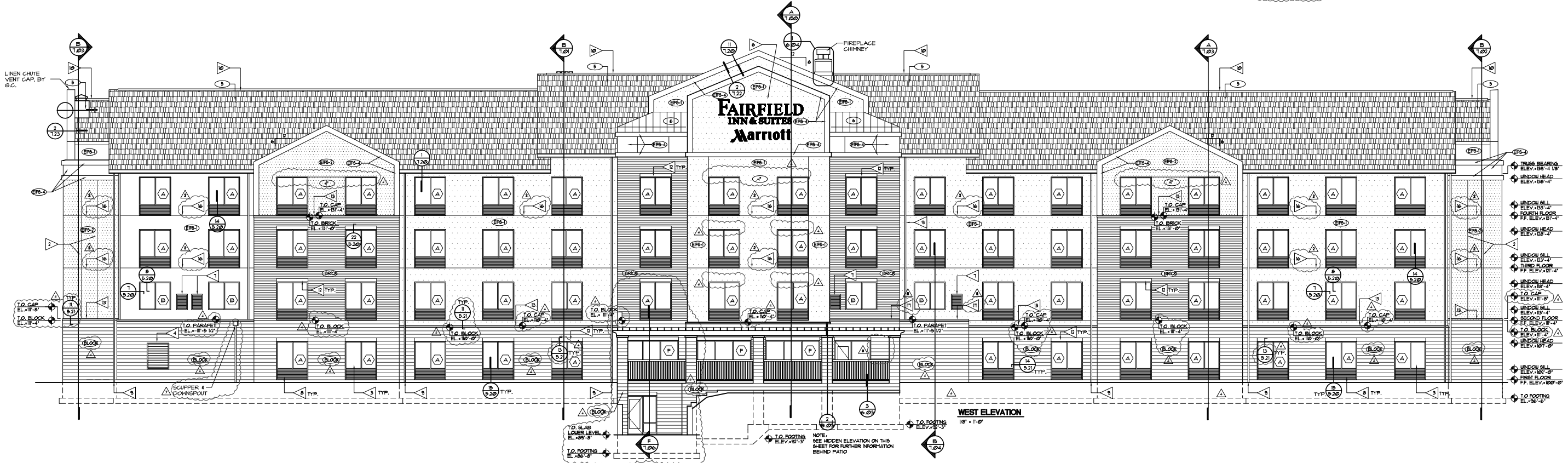
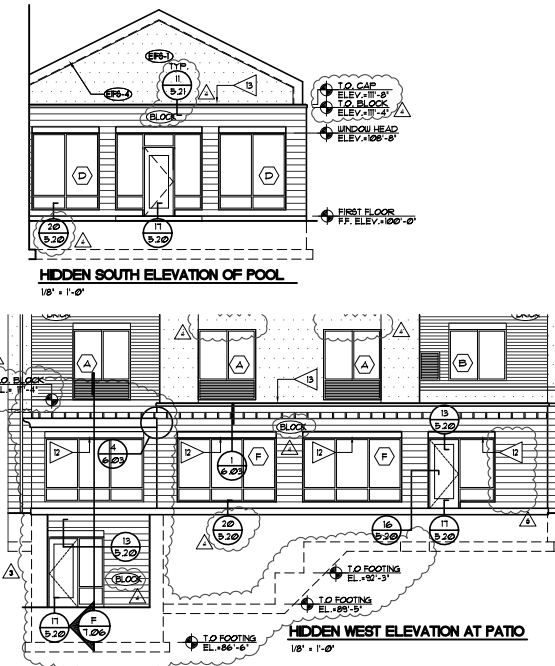
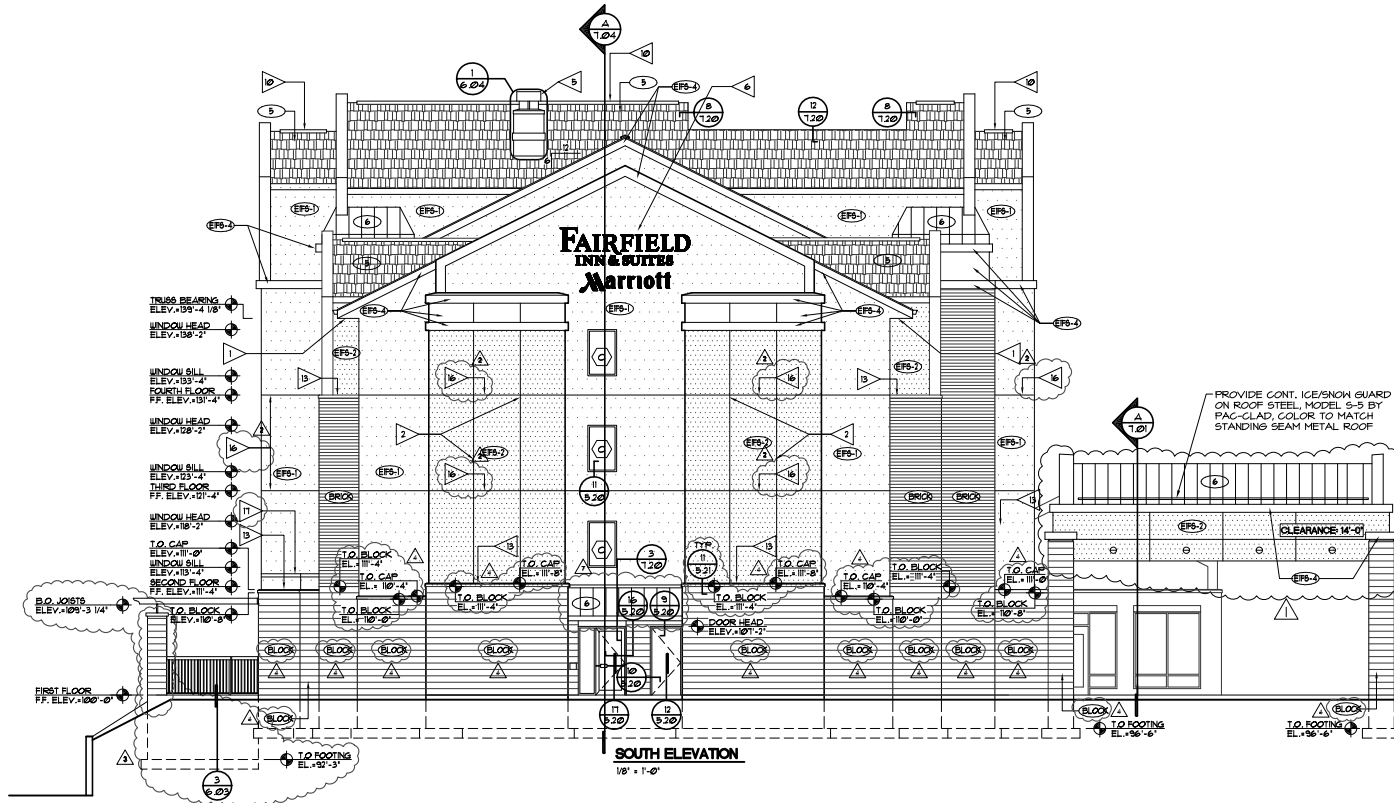
GARY BRINK & ASSOCIATES ARCHITECTS

8401 EXCELSIOR DRIVE
MADISON, WI 53717
608-829-1750
608-829-3056 (FAX)

PROJECT: **FAIRFIELD INN & SUITES** by Marriott
2702 CROSSROADS DRIVE MADISON, WISCONSIN 53718
CLIENT: **MADISON HIGH CROSSING LODGING INVESTORS II, LLC.**
8535 GREENWAY BLVD., SUITE 2000 MIDDLETON, WISCONSIN 53662

© 2008 GARY BRINK & ASSOC.
Any duplication, reproduction, or use by any other party is prohibited unless prior written authorization is received from GARY BRINK & ASSOC.

PROJECT: 200640
CAD FILE: 601-200640
DRAWN BY: RC
DATE: 05/29/08
REV. 1 06/13/08
REV. 2 08/14/08
REV. 3 09/29/08
REV. 4 09/29/08
REV. 5 12/12/08
REV. 6 01/22/09
REV. 7 02/16/09



- CRITERIA NOTES**
- 1 SOFFIT
 - 2 1 1/2" V JOINT IN EPS (TYP)
 - 3 WINDOWS (TYPICAL) 6'-0" WIDE, C-30.
 - 4 HIGH LOUVER PAINT TO MATCH COLOR OF PENETRATED EXTERIOR MATERIAL
 - 5 22-GAUGE SHEET METAL CAP ON ALL CHIMNEYS
 - 6 INDIVIDUAL INTERNALLY ILLUMINATED BUILDING SIGN. SIGN TO BE FURNISHED AND INSTALLED BY OTHERS - CONTRACTOR TO PROVIDE POWER TO J-BOX.
 - 7 VTAC GRILLE (TYP.)
 - 8 FTAC GRILLE (TYP.)
 - 9 DOWNSPOUT (TYP.)
 - 10 CONTINUOUS RIDGE VENT (TYP.)
 - 11 EPS RECESS TO MATCH WINDOW SIZE
 - 12 PRECAST CONCRETE WINDOW HEAD
 - 13 PRECAST CONCRETE CAP
 - 14 RELIEF SCUPPER
 - 15 SEE DETAIL 10 ON SHEET 2.20 FOR STAIR DETAILS
 - 16 CONTROL JOINT

ITEM	MATERIAL	COLOR	GENERAL NOTES
ROOFING	SHINGLES (5)	ANTIQUE SLATE	
GUTTERS	ALUMINUM	WHITE	3
DOWNSPOUTS	ALUMINUM	WHITE	2, 3
FASCIA	ALUMINUM	WHITE	4
SOFFIT	VENTED ALUMINUM	WHITE	
WINDOWS	ALUMINUM OR VINYL	WHITE	
CHIMNEY	E.I.F.S. FINISH COAT	E.I.F.S.-1	
CEILING AT ENTRIES	E.I.F.S. FINISH COAT	E.I.F.S.-4	
POOL FENCE	SPLIT FACE CHU / ALUMINUM	VARIES	
HVAC GRILLS	ALUMINUM	VARIES	6
RAKE TRIM	WOOD W/ METAL	WHITE	4
METAL ROOF	METAL (6)	CHARCOAL GREY	
PORTE COCHERE COPING	METAL (4)	WHITE	

GRAPHIC	EXTERIOR WALL SYSTEM	GENERAL NOTES
[Pattern]	EPS-1 - MATCH DRYVIT 100 HANOR WHITE TEXTURE - MATCH DRYVIT SANDPAPER FINE REFER TO DESIGN GUIDELINE SPECIFICATIONS EXTERIOR FINISH INDEX	8
[Pattern]	EPS-2 - MATCH DRYVIT 16 VICTORIAN LACE TEXTURE - MATCH DRYVIT SANDPAPER REFER TO DESIGN GUIDELINE SPECIFICATIONS EXTERIOR FINISH INDEX	
[Pattern]	BRICK - COPPERTONE VELOUR UTILITY SIZE BRICK BY ENDICOTT CLAY	
[Pattern]	BLOCK - WESTERN SAND 64-00 SPLIT-FACED BLOCK BY COUNTY MATERIALS	
[Pattern]	EPS-3 - MATCH DRYVIT 100 WHITE - FINE TEXTURE	
[Pattern]	PTAC/VTAC GRILLE AND INTERGRAL FRAMES	
[Pattern]	PTAC/VTAC GRILLE, FULL WIDTH ARCHITECTURAL LOUVER - WHITE TO MATCH WINDOW COLOR	

- GENERAL NOTES**
- FOR EXTERIOR FINISHES SEE EXTERIOR FINISH INDEX IN PROJECT SPECIFICATIONS.
 - DOWNSPOUT BOOT AND EXPOSED PORTION OF UNDERGROUND STORM SEWER PIPE TO BE PAINTED TO MATCH DOWNSPOUT.
 - GUTTERS SHALL BE PREFINISHED ALUMINUM WITH MINIMUM THICKNESS OF .032, BEVELED PROFILE, SIZED AS REQ'D (3/4" MIN. W/4" HIGHER BACK & NON-CORROSIVE LEAF SCREEN. DOWNSPOUTS SHALL BE PREFINISHED ALUMINUM WITH MINIMUM THICKNESS OF .021, SIZED AS REQ'D. (3/4" MIN.)
 - COLOR TO MATCH PRE-FINISHED GUTTER COLOR.
 - PAINT ALL ROOF TOP MOUNTED DEVICES AND PENETRATIONS TO MATCH ROOF.
 - ALL LOUVERS AND HVAC GRILLES' COLOR TO MATCH ADJACENT MATERIAL COLOR EXCEPT WHERE NOTED.
 - ALL ROOF PENETRATIONS ARE TO BE LOCATED ON THE REAR ELEVATION ROOF UNLESS NOTED OTHERWISE.
 - THICKNESS OF EPS UNDER E.I.F.S. SHALL BE 1" UNLESS NOTED THIS "XX". SEE ELEVATIONS THIS SHEET AND DETAILS AS NOTED.



GARY BRINK & ASSOCIATES
ARCHITECTS
8401 EXCELSIOR DRIVE
MADISON, WI 53717
608-829-1750
608-829-3056 (FAX)

PROJECT: **FAIRFIELD INN & SUITES** by Marriott
2702 CROSSROADS DRIVE MADISON, WISCONSIN 53718
CLIENT: **MADISON HIGH CROSSING LODGING INVESTORS II, LLC.**
6333 GREENWAY BLVD., SUITE 2000 MIDDLETON, WISCONSIN 53662

© 2008 GARY BRINK & ASSOC.
Any duplication, reproduction, or use by any other party is prohibited unless prior written authorization is received from GARY BRINK & ASSOC.

PROJECT: 200640
CAD FILE: 601-200640
DRAWN BY: RC
DATE: 06/29/08
REV. 1 06/13/08
REV. 2 08/14/08
REV. 3 09/29/08
REV. 4 12/12/08
REV. 5 01/14/09
REV. 6 01/22/09
REV. 7 02/16/09



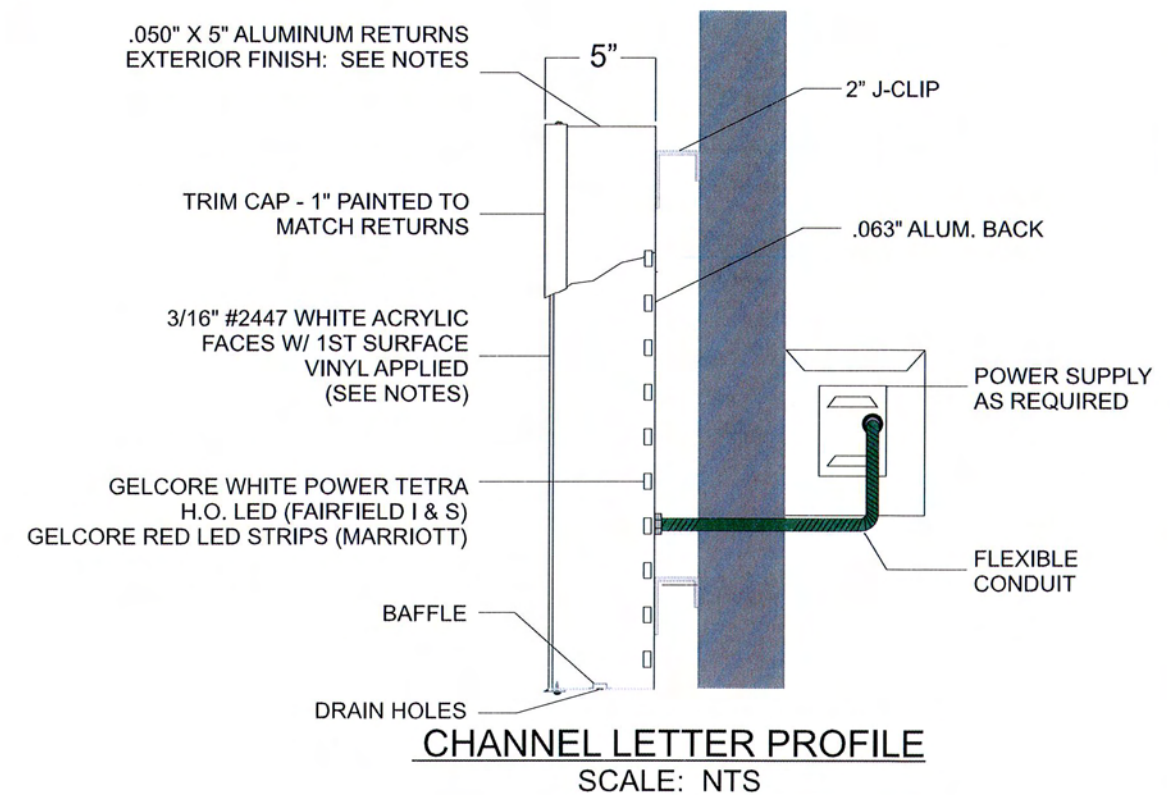
GRAPHIC DETAIL
SCALE: 3/8" = 1'-0"


NOTES:

U.L. APPROVED
 ELECTRICAL: 3.6 AMPS - 120 VOLTS
 EXTERIOR FINISH: PAINT LACRYL SERIES 95
 'FAIRFIELD I & S': MATTHEWS #MP02110 SATIN BLUE
 'MARRIOTT': MATTHEWS #MP08937 SATIN RED
 INTERIOR FINISH: PAINT BOTH REFLECTIVE WHITE

FACE NOTES:

VDN-11849 PERFORATED BLUE: 'FAIRFIELD I & S' LETTERS
 VT-1331 RED: 'MARRIOTT' LETTERS



Customer: FAIRFIELD INN & SUITES	Date: 3-26-09	Prepared By: MWR	<p><small>Note: Color output may not be exact when viewing or printing this drawing. All colors used are PMS or the closest CMYK equivalent. If these colors are incorrect, please provide the correct PMS match and a revision to this drawing will be made.</small></p>		<p><small>DISTRIBUTED BY SIGN UP COMPANY 700 21st STREET SOUTHWEST PO BOX 210 WATERTOWN, SD 57201-0210 Ph./ 1-800-843-9888</small></p>
Location: OCEAN CITY, MD	File Name: 57847-30\"	ENG: X			



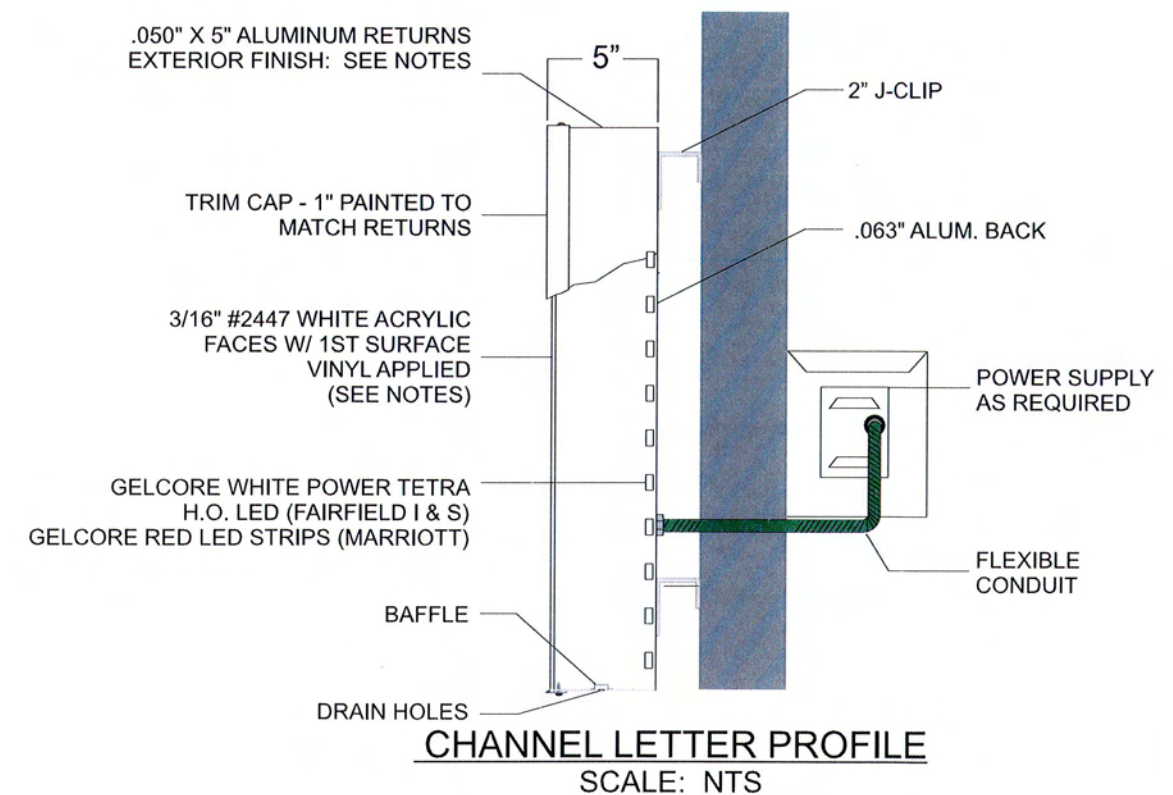
GRAPHIC DETAIL
SCALE: 1/4" = 1'-0"


NOTES:

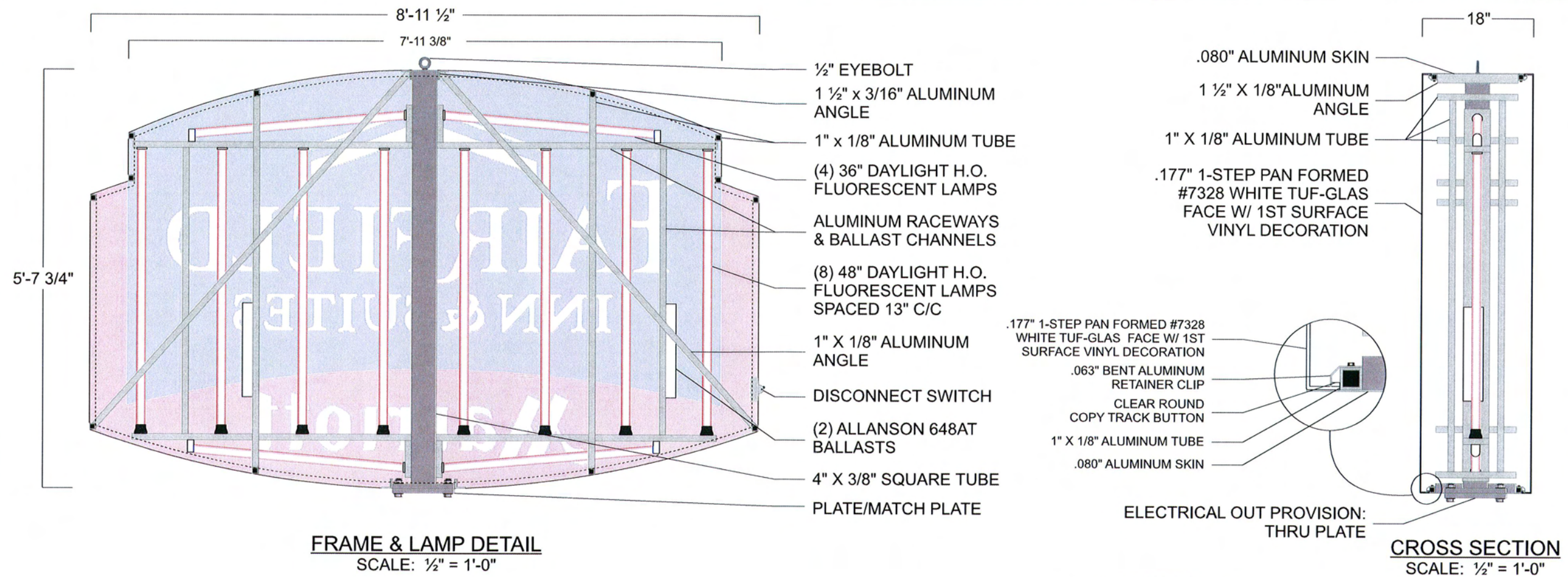
U.L. APPROVED
 ELECTRICAL: 5.4 AMPS - 120 VOLTS
 EXTERIOR FINISH: PAINT LACRYL SERIES 95
 'FAIRFIELD I & S': MATTHEWS #MP02110 SATIN BLUE
 'MARRIOTT': MATTHEWS #MP08937 SATIN RED
 INTERIOR FINISH: PAINT BOTH REFLECTIVE WHITE

FACE NOTES:

VDN-11849 PERFORATED BLUE: 'FAIRFIELD I & S' LETTERS
 VT-1331 RED: 'MARRIOTT' LETTERS



Customer: FAIRFIELD INN & SUITES	Date: 3-26-09	Prepared By: MWR	<p><small>Note: Color output may not be exact when viewing or printing this drawing. All colors used are PMS or the closest CMYK equivalent. If these colors are incorrect, please provide the correct PMS match and a revision to this drawing will be made.</small></p>	 <p>Ph./ 1-800-843-9888</p>	<p>DISTRIBUTED BY SIGN UP COMPANY 700 21st STREET SOUTHWEST PO BOX 210 WATERTOWN, SD 57201-0210</p>
Location: OCEAN CITY, MD	File Name: 57847-42" CUSTOM LED RT CL C-PRINT	ENG: X			



FRAME & LAMP DETAIL
SCALE: 1/2" = 1'-0"

CROSS SECTION
SCALE: 1/2" = 1'-0"

FRAME DETAIL:
 DESIGN FACTOR: 30 PSF
 18" X 1" X 1/8" ALUMINUM TUBE FRAME
 RIGID BLEED FACES
 EXTERIOR FINISH: PAINTED TO MATCH FACES
 INTERIOR FINISH: REFLECTIVE WHITE
 SKINS REMOVABLE FOR SERVICE
 U.L. APPROVED
 ELECTRICAL: 5.60 AMPS, 120 VOLTS
 SQUARE FOOTAGE: BOXED = 50.58
 ACTUAL = 44.43



GRAPHIC DETAIL
SCALE: 3/8" = 1'-0"



END VIEW
SCALE: 3/8" = 1'-0"

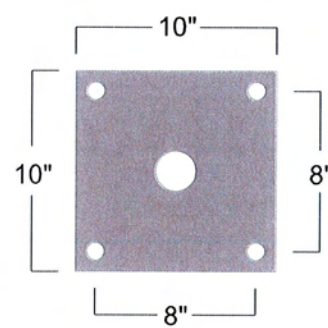
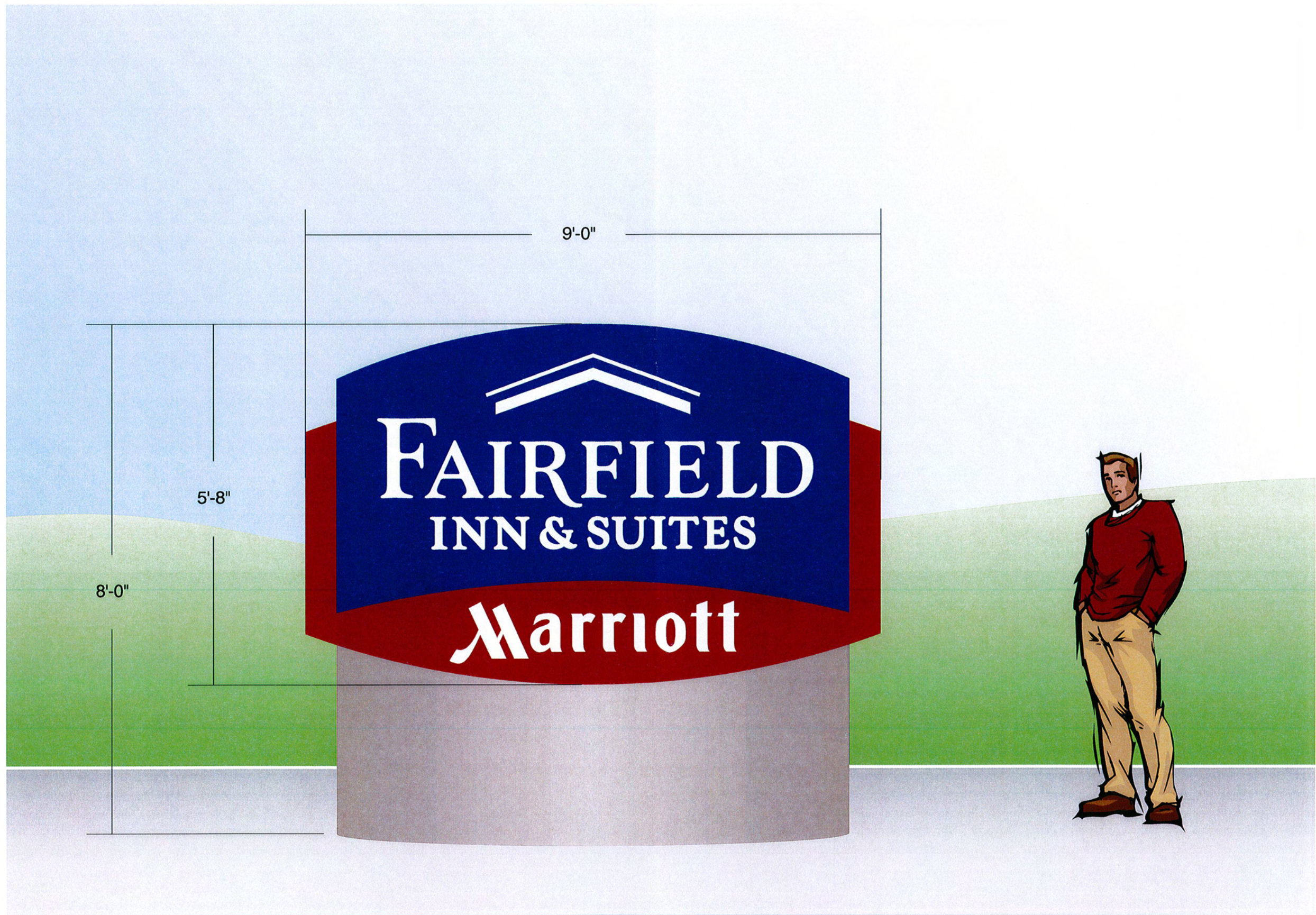



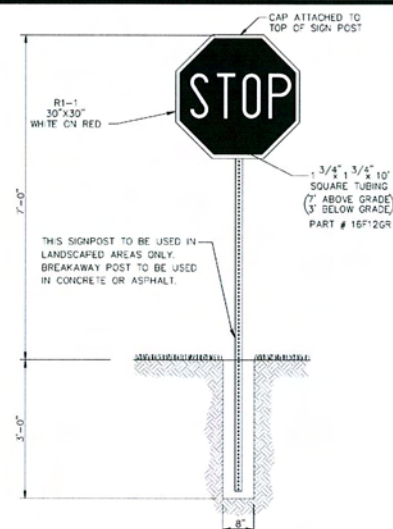
PLATE DETAIL
SCALE: 1" = 1'-0"
 3/4" X 10" X 10" PLATES
 7/8" HOLES
 3/4" BOLTS
 PLATE WILL ACCEPT:
 9" PIPE
 6" TUBE

FACE DETAIL:
 .177" #7328 WHITE PAN-FORMED TUF-GLAS W/ 1ST SURFACE VINYL DECORATION:
 ■ 3630-157 SULTAN BLUE - UPPER BACKGROUND
 ■ 3630-2382 RED - LOWER BACKGROUND
 □ WHITE: "FAIRFIELD INN & SUITES" & "MARRIOTT" COPY & LOGO

Customer: FAIRFIELD INN & SUITES	Date: 10/23/08	Prepared By: CM	Note: Color output may not be exact when viewing or printing this drawing. All colors used are PMS or the closest CMYK equivalent. If these colors are incorrect, please provide the correct PMS match and a revision to this drawing will be made.		DISTRIBUTED BY SIGN UP COMPANY 700 21st STREET SOUTHWEST PO BOX 210 WATERTOWN, SD 57201-0210
Item Number: FAIIS-5X9DFR-S FAIIS-5X9FAR-S	File Name: FAIIS 5 X 9 DF MONUMENT	Revision: X			



Customer: FAIRFIELD INN & SUITES	Date: 10/17/08	Prepared By: CM	Note: Color output may not be exact when viewing or printing this drawing. All colors used are PMS or the closest CMYK equivalent. If these colors are incorrect, please provide the correct PMS match and a revision to this drawing will be made.	 PERSONA <i>Sign Makers / Image Builders</i> Ph./ 1-800-843-9888	DISTRIBUTED BY SIGN UP COMPANY 700 21st STREET SOUTHWEST PO BOX 210 WATERTOWN, SD 57201-0210
Location: MADISON, WI	File Name: 57847 - 36" CL (2) - 30" CL (2) - 5X9 DF MON @ 8' OAH	Eng: X			



7 TAPERED CURB DETAIL
C1.1 NO SCALE

8 TAPERED CURB DETAIL
C1.1 NO SCALE

6 CONCRETE SIDEWALK
C1.1 NO SCALE

PROPOSED BUILDING DATA

FLOOR	AREA (SF)
FIRST FLOOR	18,065
SECOND FLOOR	16,342
THIRD FLOOR	16,342
FOURTH FLOOR	16,342
TOTAL FLOOR AREA	67,095

SITE INFORMATION:

SITE ADDRESS: 2702 CROSSROADS DRIVE
 PROPERTY AREA: AREA = 137,067 S.F. (3.15 ACRES).
 EXISTING ZONING: RPSM
 PROPOSED ZONING: RPSM
 PROPOSED USE: HOTEL
 SETBACKS: BUILDING: FRONT = 25'
 SIDE = 15'
 REAR = 30'
 PARKING: FRONT = 25'
 SIDE = 0'
 REAR = 0'

PROPOSED BUILDING HEIGHT: 47' 8"

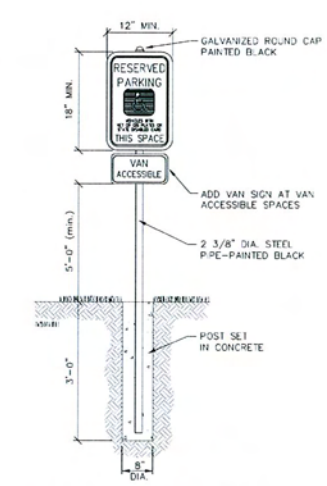
NUMBER OF STORIES ABOVE GRADE: 4
 PARKING REQUIRED: 1 SPACE PER EACH LODGING ROOM (131 SPACES REQ.)
 PARKING PROVIDED: 131 SPACES (5 H.C. ACCESSIBLE)
 HANDICAP STALLS REQUIRED: 5, HANDICAP STALLS PROVIDED: 5
 HOURS OF OPERATION: 24 HOURS - 7 DAYS A WEEK
 NUMBER OF BICYCLE STALLS SHOWN = 2 (1 PER 20 EMPLOYEES REQUIRED, 12 EMPLOYEES PROPOSED, MIN. OF 2 STALLS REQUIRED)

SITE SOIL TYPE: RNB
 DISTURBED AREA: 124,726 S.F. (2.86 ACRES)
 UTILITY CONTACTS: ELECTRICAL & GAS - MG&E (608) 252-7373
 WATER & SEWER - MADISON WATER UTILITIES (608) 266-4651
 BUILDING FLOOR AREA TO SITE AREA RATIO: 0.51
 DISTANCE TO NEAREST INTERSECTION: 387' (WALL STREET)

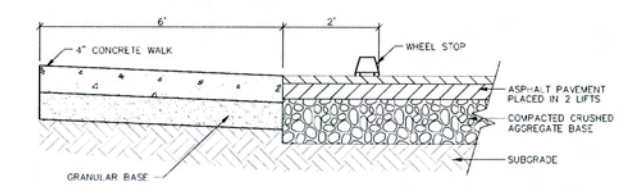
PROPOSED SITE DATA

PROJECT SITE	AREA (AC)	AREA (SF)	RATIO
BUILDING FLOOR AREA	0.42	18,423	13.3%
PAVEMENT (ASP. & CONC.)	1.20	52,186	38.1%
TOTAL IMPERVIOUS	1.62	70,609	51.4%
LANDSCAPE/OPEN SPACE	1.53	66,458	48.6%

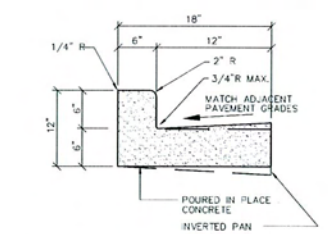
- NOTES:**
- 4" WIDE YELLOW STRIPING FOR PARKING STALLS, TRAFFIC LANE, AND NO PARKING AREAS. YELLOW PAINT MARKINGS FOR H.C. ACCESSIBLE SYMBOLS, TRAFFIC ARROWS, AND TRAFFIC MESSAGE.
 - ALL DRIVEWAYS AND CURB CUTS TO BE CONSTRUCTED ACCORDING TO LOCAL ORDINANCES.
 - CONTRACTOR TO VERIFY THAT NO EXISTING IRRIGATION SYSTEMS ON THE ADJACENT PROPERTIES WILL BE DISTURBED DURING CONSTRUCTION. CONTRACTOR TO RELOCATE OR PROTECT IRRIGATION SYSTEMS IF NECESSARY.
 - ANY DAMAGE TO PAVEMENT ON CROSSROADS DRIVE WILL REQUIRE RESTORATION IN ACCORDANCE WITH THE CITY'S PAVING CRITERIA.
 - THE OWNERS OF THE PROPOSED HOTEL ACKNOWLEDGE THE PRESENCE OF HIGH LEVELS OF NOISE AND VIBRATION RESULTING FROM THE ADJACENT INTERSTATE 39-90-94 AND SHALL HOLD HARMLESS THE WISCONSIN DEPARTMENT OF TRANSPORTATION AND CITY OF MADISON FROM ANY IMPACTS ON THE USE, ENJOYMENT, OR VALUE OF THIS PROPERTY RESULTING FROM EXISTING OR FUTURE HIGHWAY TRAFFIC VOLUMES.
 - STRUCTURE MEETS THE INTERIOR SOUND LEVEL CRITERIA (52dBA OR LESS) AS SET FORTH IN MGD SEC. 16.23 (3) (d) - HIGHWAY NOISE LAND PROVISIONS.



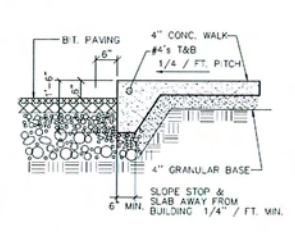
4 HANDICAP SIGNAGE DETAIL
C1.1 NO SCALE



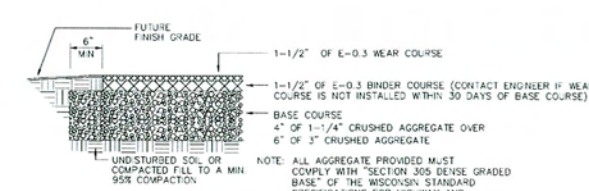
5 PARKING/WALK DETAIL
C1.1 NO SCALE



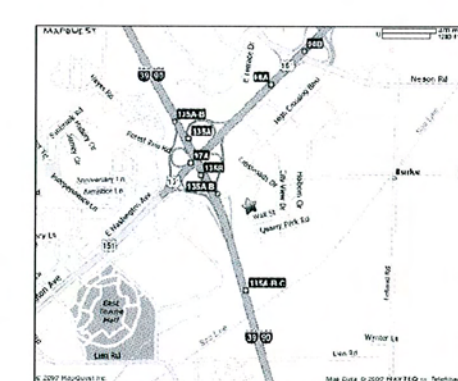
2 18" CONCRETE CURB & GUTTER DETAIL
C1.1 NO SCALE



3 RAISED WALK DETAIL
C1.1 NO SCALE



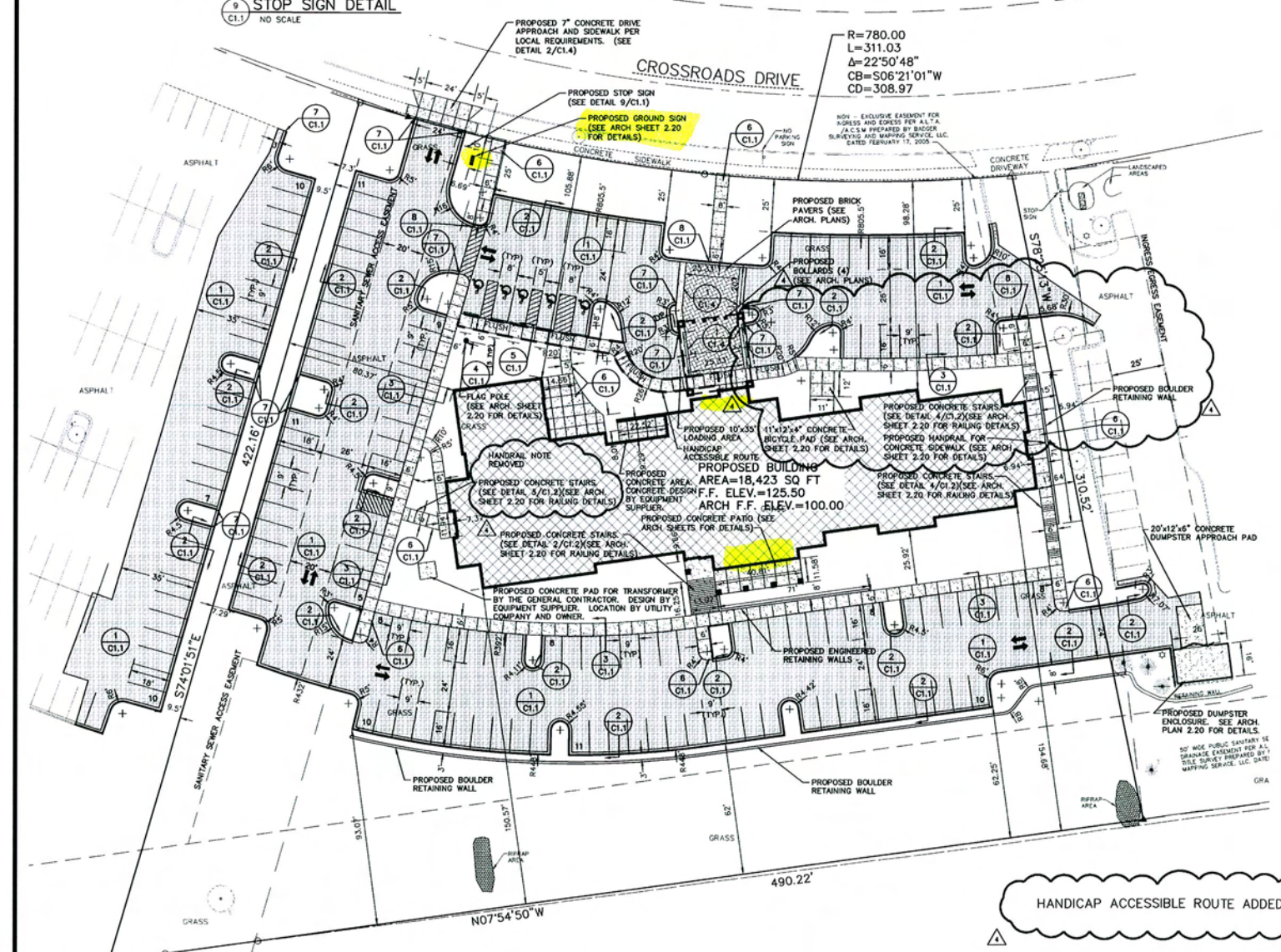
1 STANDARD ASPHALT PAVING DETAIL
C1.1 NO SCALE



LOCATION MAP



SITE PLAN
SCALE: 1"=30'-0"



SHEET ISSUE:
 JANUARY 23, 2008
 SEE TITLE SHEET TO CONFIRM THAT THIS SHEET HAS BEEN RELEASED FOR CONSTRUCTION

REVISIONS:

NO.	DATE	DESCRIPTION
1	MAY 29, 2008	
2	JUNE 5, 2008	
3	JULY 3, 2008	

(POST BID CLARIFICATION #1)

OWNER:
 RAYMOND MANAGEMENT CO.
 8333 GREENWAY BLVD.
 SUITE 200
 MIDDLETON, WI 53562

PROJECT:
 FAIRFIELD INN & SUITS
 2702 CROSSROADS DRIVE
 MADISON, WISCONSIN 53718

DATE: JAN. 23, 2008
DESIGN NO.: 712140

SHEET
 C1.1

2007 © EXCEL ENGINEERING INC.