

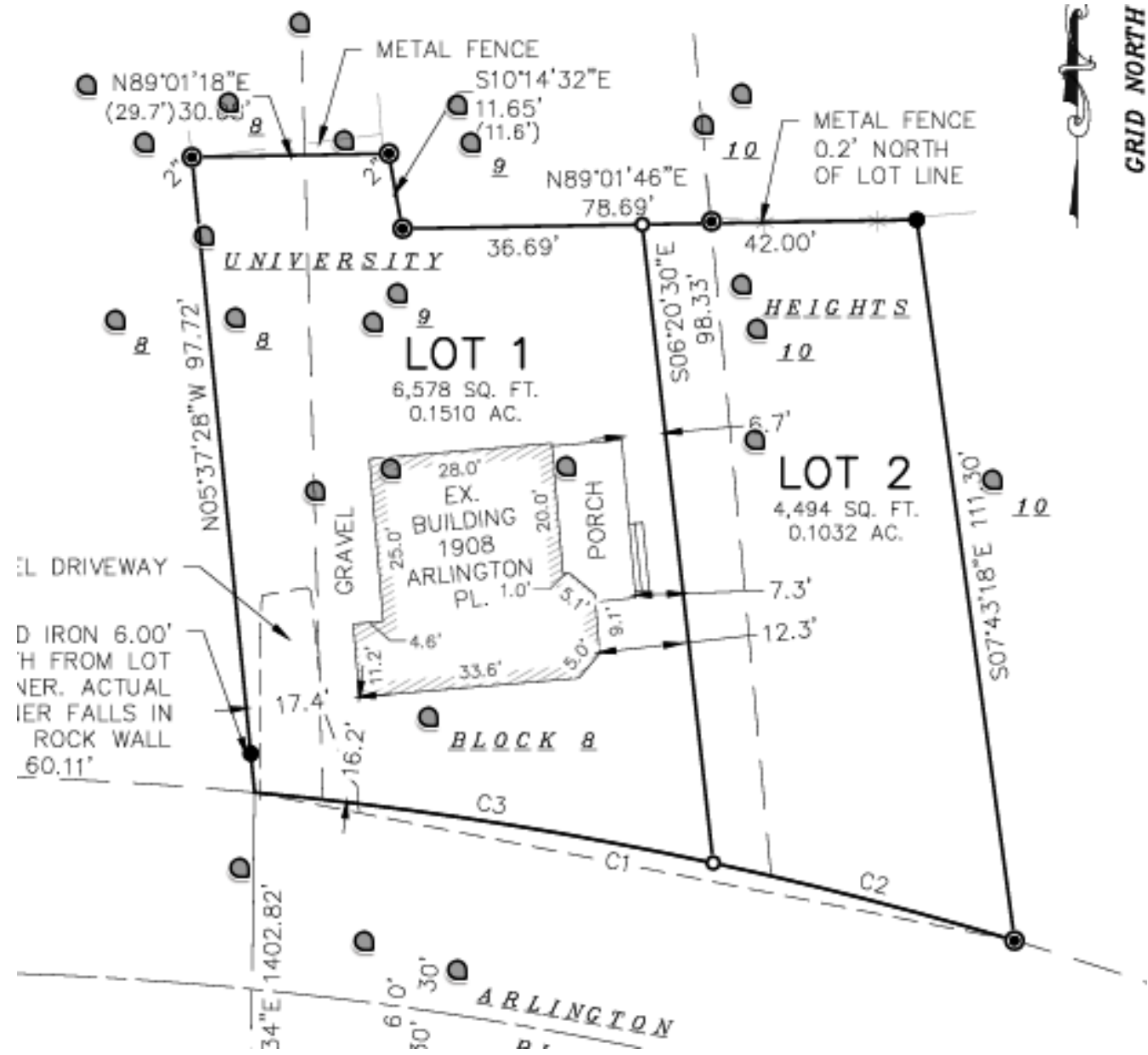


1908 Arlington Place
Certificate of Appropriateness
February 12, 2024

Proposed Work

- Resolve western underlying lot line
- Adjust eastern lot line

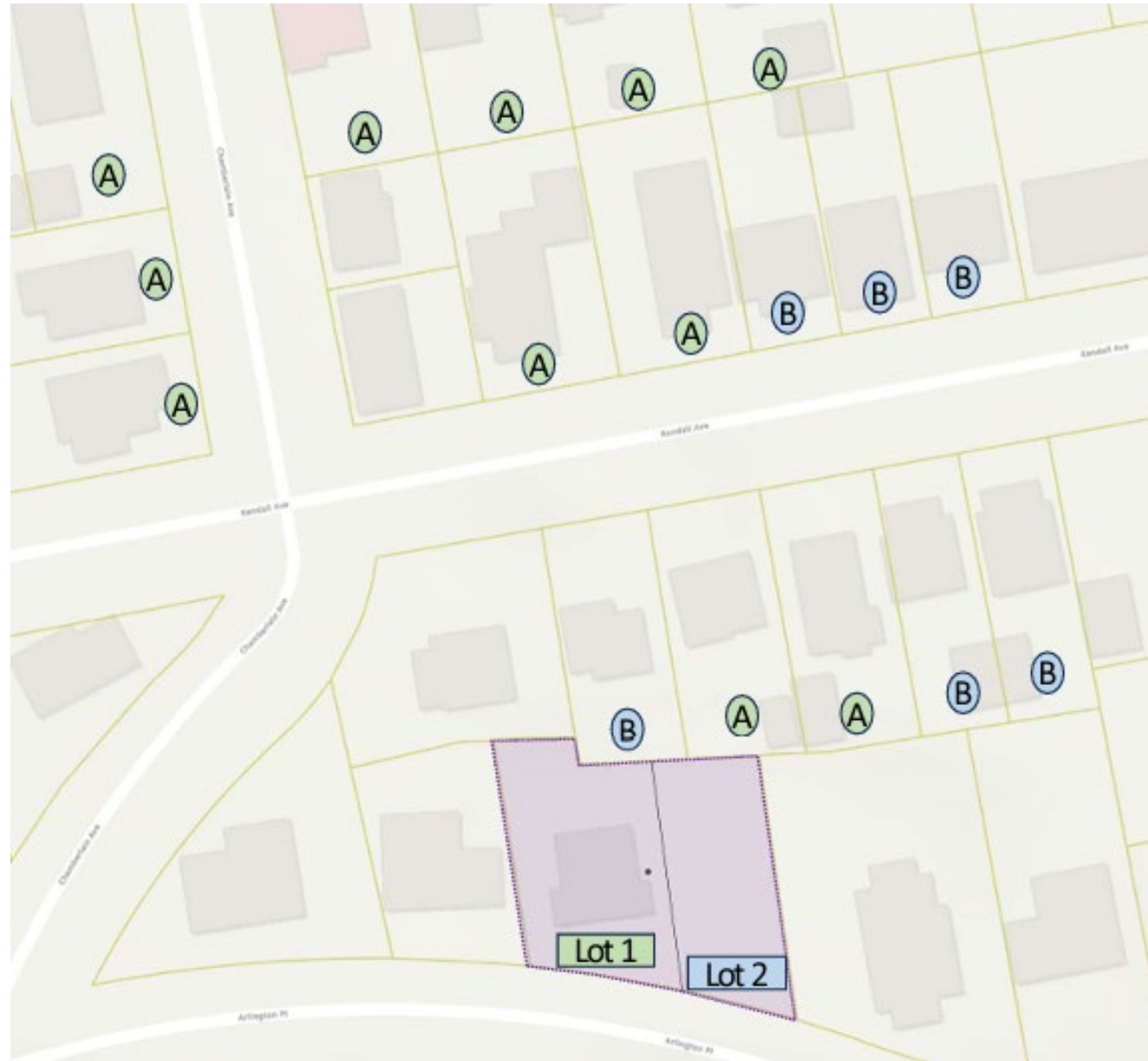




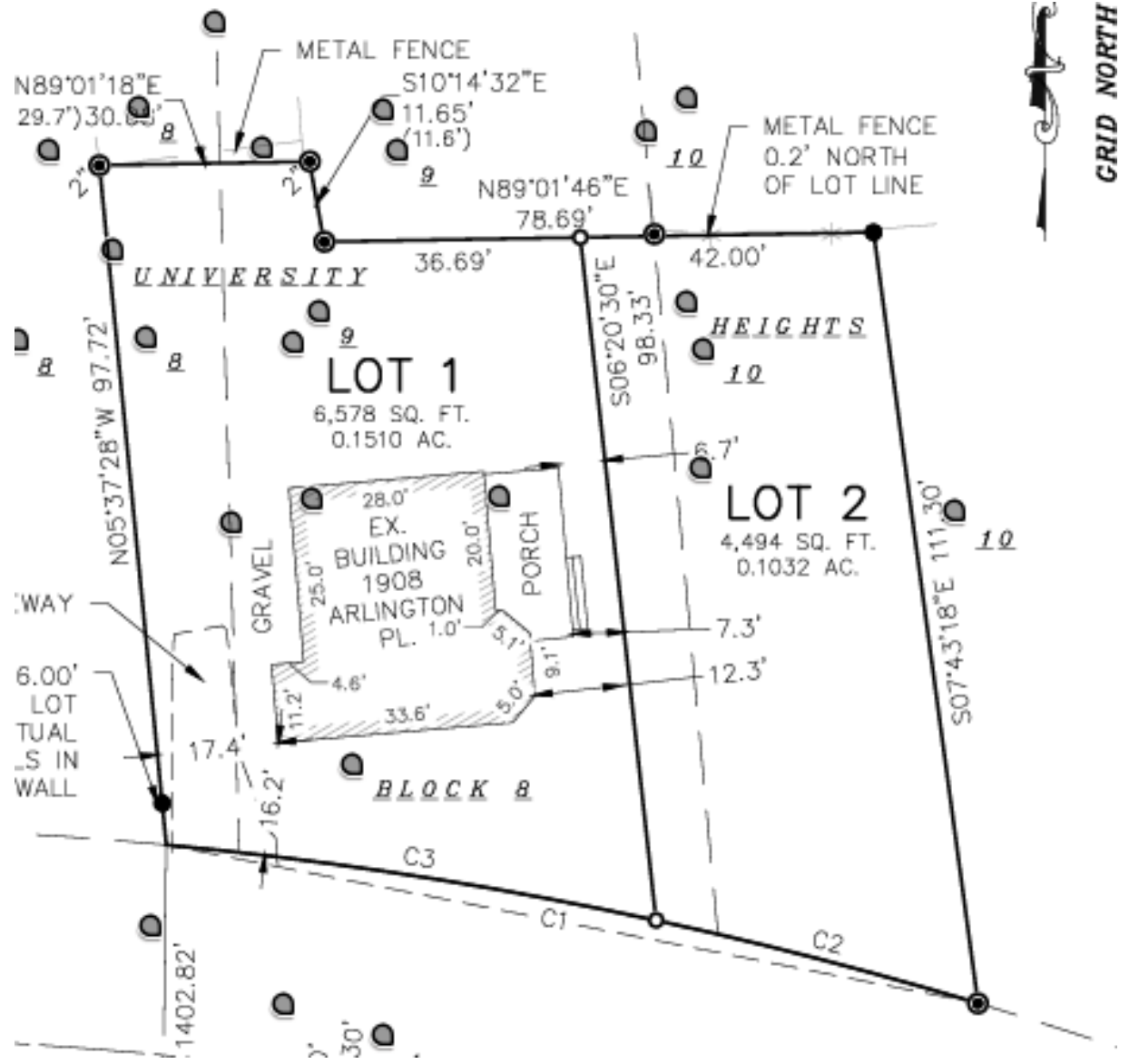
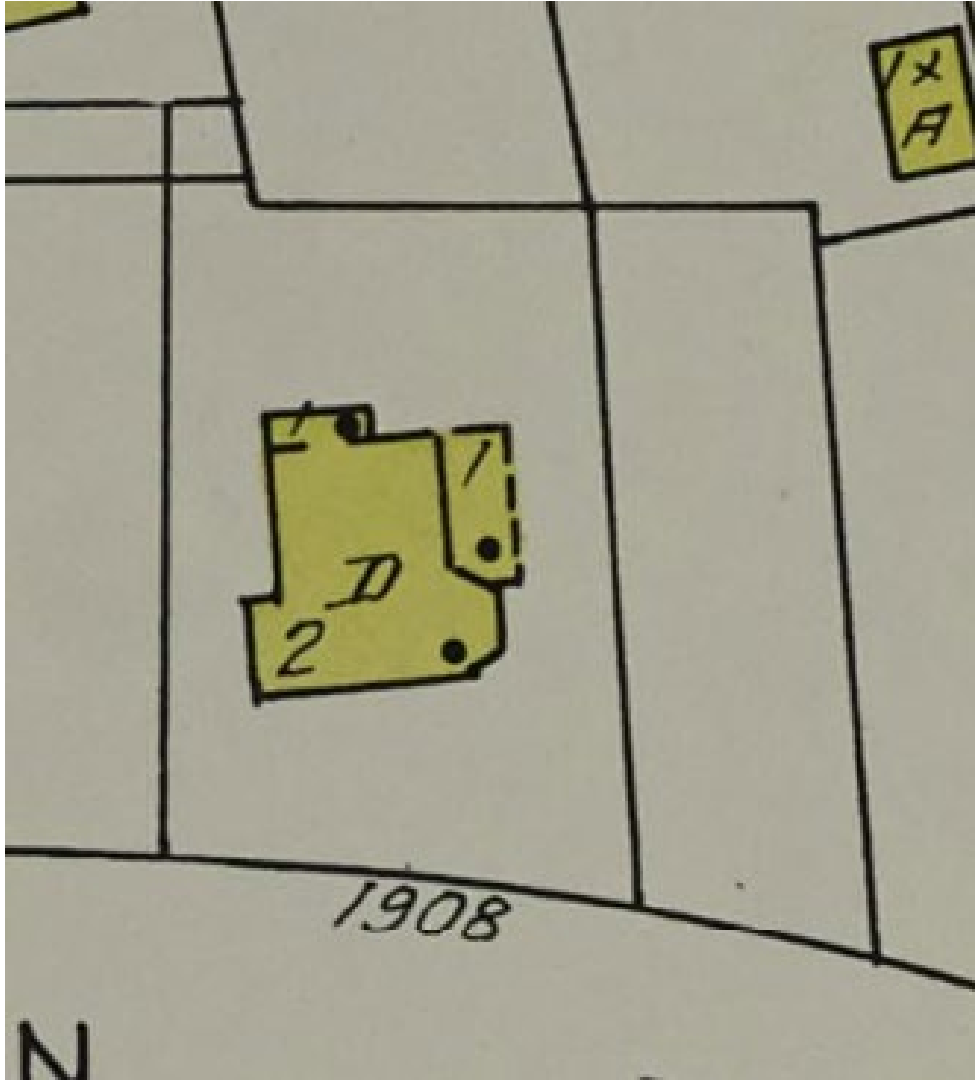
1942 Sanborn Map



Analysis of Parcel sizes







Applicable Standards

MGO 41.18 (4)

Land Divisions and Combinations . The commission shall approve a certificate of appropriateness for land divisions, combinations, and subdivision plats of landmark sites and properties in historic districts, unless it finds that the proposed lot sizes adversely impact the historic character or significance of a landmark, **are incompatible with adjacent lot sizes, or fail to maintain the general lot size pattern of the historic district.**



Staff Recommendation

Staff believes that the standards for granting a Certificate of Appropriateness are met and recommends the Landmarks Commission approve the project as proposed.

