

#A

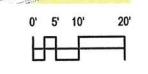


TRI-NORTH BUILDERS HOLDS ALL RIGHTS INCLUDING THE COPYRIGHT OF THIS DOCUMENT. AS WELL AS THE CONCEPTS AND DESIGNS INCORPORATED HEREIN AS AN INSTRUMENT OF SERVICE. ALL PLANS AND ILLUSTRATIONS CONTAINED IN THIS PUBLICATION ARE THE EXCLUSIVE PROPERTY OF TRI-NORTH BUILDERS AND REPRODUCTION IN WHOLE OR IN PART IS STRICTLY PROHIBITED BY LAW. ALL PLANS ARE PROTECTED BY FEDERAL COPYRIGHT LAWS. ANY USE OF THE INFORMATION CONTAINED HEREIN BEYOND THE ONE-TIME USE AUTHORIZED BY A PURCHASE OF PRINTS, OR ANY DUPLICATION, PUBLICATION, SALE OR DISTRIBUTION OF ANY PART OF THESE PLANS WITHOUT THE PRIOR WRITTEN CONSENT OF TRI-NORTH BUILDERS REPRESENTS A VIOLATION OF FEDERAL LAWS SUBJECT TO PENALTIES.

# WHITNEY POINT REVISED DRAWINGS



1 COLORED LANDSCAPE PLAN  
1" = 20'-0"



PROJECT:  
WHITNEY POINT APARTMENTS  
5402 S. WHITNEY WAY  
MADISON, WI 53705

TITLE:  
SITE PLAN

DRAWN BY: TMT    CHECKED BY: SH  
PROJECT NO: 18001-025    DATE: 04/24/2019

SW 1/4  
UNPLATTED  
LANDS  
BY  
OTHERS

UNPLATTED  
LANDS  
BY  
OTHERS

MINERAL POINT ROAD

ONE-WAY

**COMMUNITY ROOM  
FITNESS**

PROPOSED BUILDING  
FFE=1002.00  
LL=990.00

**TOTAL AREA**  
77,129 Sq. Feet  
1.771 Acres

10'03" E SOUTH LINE SW 1/4 2519.22' 10'03" E SOUTH LINE SE 1/4

(33.10')  
S 89°48'42" W 36.15'  
(S 89°06'34" W)

(N 00°22'42" W) (5.07')  
(N 00°00'43" E)

45.28' (45.00')  
(N 00°45'08" W)  
N 00°06'02" W

10' WIDE UTILITY EASEMENT PER DOC. NO. 1500271 & DOC. NO. 1499816

15' WIDE UTILITY EASEMENT PER DOC. NO. 1645207

FOUND 1/2" IRON BAR 1.97' N 75°19'36" E OF TRUE CORNER

10' WIDE UTILITY EASEMENT PER DOC. NO. 1499816

BENCHMARK #3 ELEV=1002.07

S 89°38'38" W

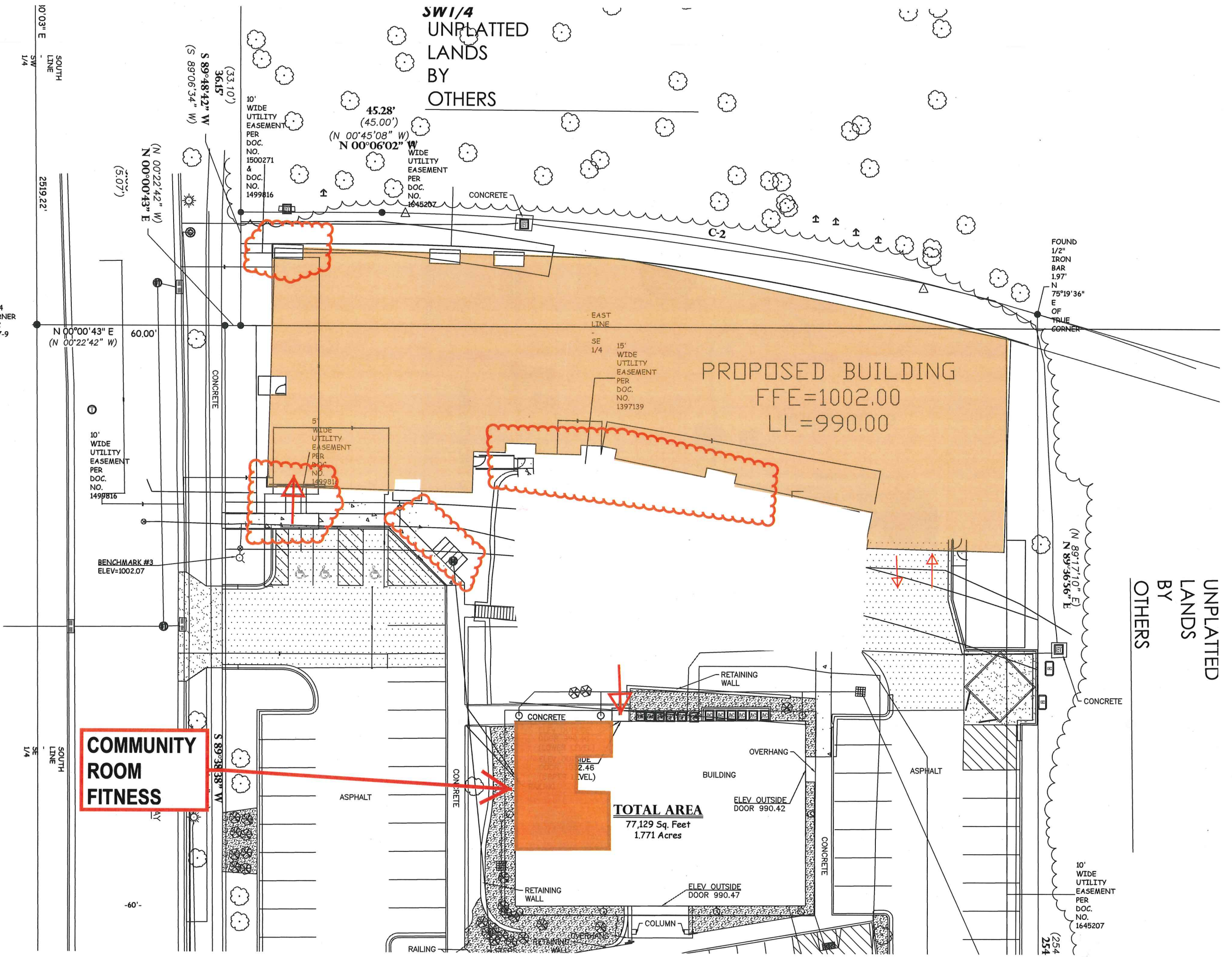
(N 89°17'10" E) (N 89°36'56" E)

10' WIDE UTILITY EASEMENT PER DOC. NO. 1645207

254  
254

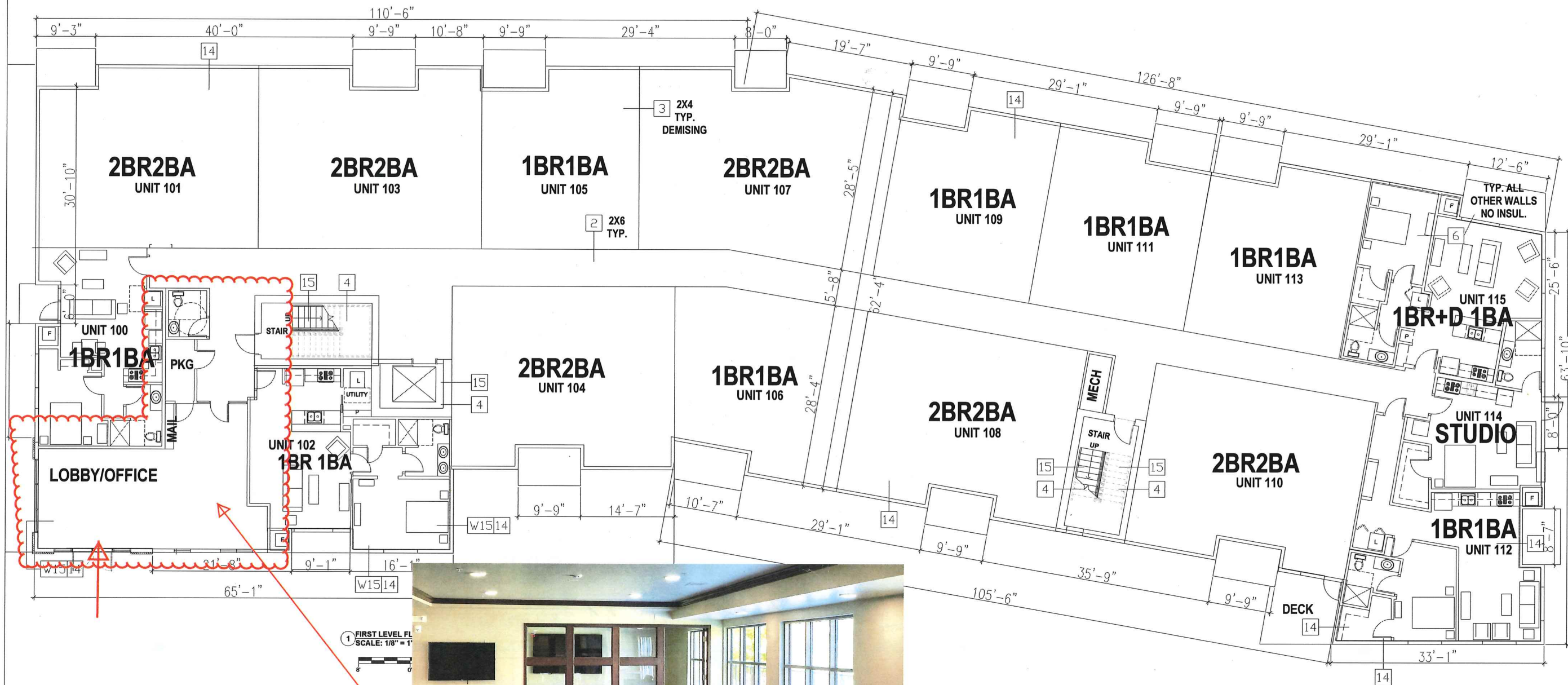
-60'-

-60'-





TRI-NORTH BUILDERS HOLDS ALL RIGHTS INCLUDING THE COPYRIGHT OF THIS DOCUMENT, AS WELL AS THE CONCEPTS AND DESIGNS INCORPORATED HEREIN AS AN INSTRUMENT OF SERVICE. ALL PLANS AND ILLUSTRATIONS CONTAINED IN THIS PUBLICATION ARE THE EXCLUSIVE PROPERTY OF TRI-NORTH BUILDERS AND REPRODUCTION IN WHOLE OR IN PART IS STRICTLY PROHIBITED BY LAW. ALL PLANS ARE PROTECTED BY FEDERAL COPYRIGHT LAWS. ANY USE OF THE INFORMATION CONTAINED HEREIN BEYOND THE ONE-TIME USE AUTHORIZED BY A PURCHASE OF PRINTS, OR ANY DUPLICATION, PUBLICATION, SALE OR DISTRIBUTION OF ANY PART OF THESE PLANS WITHOUT THE PRIOR WRITTEN CONSENT OF TRI-NORTH BUILDERS REPRESENTS A VIOLATION OF FEDERAL LAWS SUBJECT TO PENALTIES.



1 FIRST LEVEL FL.  
SCALE: 1/8" = 1'



PROJECT:  
WHITNEY POINT APARTMENTS  
5402 S. WHITNEY WAY  
MADISON, WI 53705

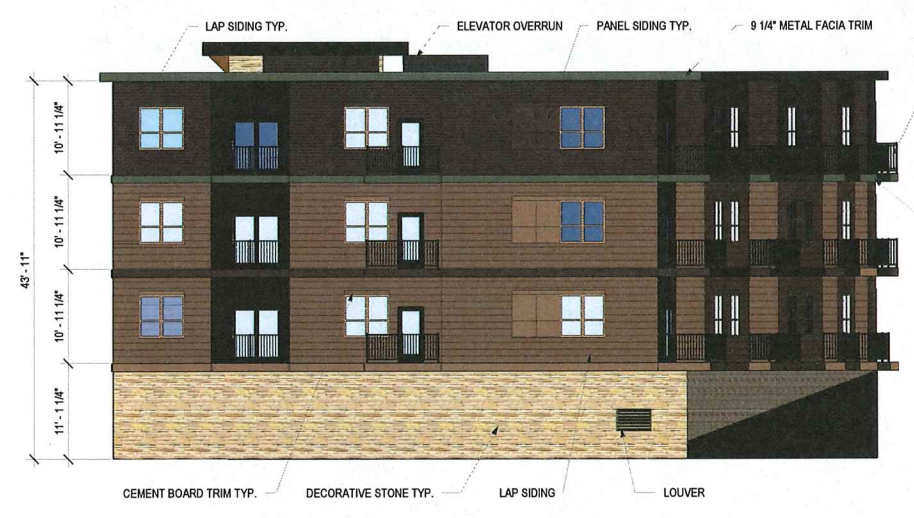
TITLE:  
FIRST LEVEL  
FLOOR PLAN

DRAWN BY: TMT      CHECKED BY: SH  
PROJECT NO: 18001-025      DATE: 02/05/2019

TRI-NORTH BUILDERS HOLDS ALL RIGHTS INCLUDING THE COPYRIGHT OF THIS DOCUMENT, AS WELL AS THE CONCEPTS AND DESIGNS INCORPORATED HEREIN AS AN INSTRUMENT OF SERVICE. ALL PLANS AND ILLUSTRATIONS CONTAINED IN THIS PUBLICATION ARE THE EXCLUSIVE PROPERTY OF TRI-NORTH BUILDERS AND REPRODUCTION IN WHOLE OR IN PART IS STRICTLY PROHIBITED BY LAW. ALL PLANS ARE PROTECTED BY FEDERAL COPYRIGHT LAWS. ANY USE OF THE INFORMATION CONTAINED HEREIN BEYOND THE ONE-TIME USE AUTHORIZED BY A PURCHASE OF PRINTS, OR ANY DUPLICATION, PUBLICATION, SALE OR DISTRIBUTION OF ANY PART OF THESE PLANS WITHOUT THE PRIOR WRITTEN CONSENT OF TRI-NORTH BUILDERS REPRESENTS A VIOLATION OF FEDERAL LAWS SUBJECT TO PENALTIES.



**1 EAST EXTERIOR ELEVATION**  
3/32" = 1'-0"



**2 NORTH EXTERIOR ELEVATION**  
3/32" = 1'-0"



**3 SOUTH EXTERIOR ELEVATION**  
3/32" = 1'-0"



**4 WEST EXTERIOR ELEVATION**  
3/32" = 1'-0"

PROJECT:  
WHITNEY POINT APARTMENTS  
5402 S. WHITNEY WAY  
MADISON, WI 53705

TITLE:  
EXTERIOR ELEVATIONS

DRAWN BY: TMT      CHECKED BY: SH  
PROJECT NO: 18001-025      DATE: 04/24/2019



