



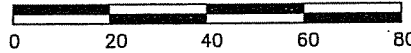
**BIRRENKOTT  
SURVEYING, INC.**

P.O. Box 237  
1677 N. Bristol Street  
Sun Prairie, WI. 53590  
Phone (608) 837-7463  
Fax (608) 837-1081

**CERTIFIED SURVEY MAP**

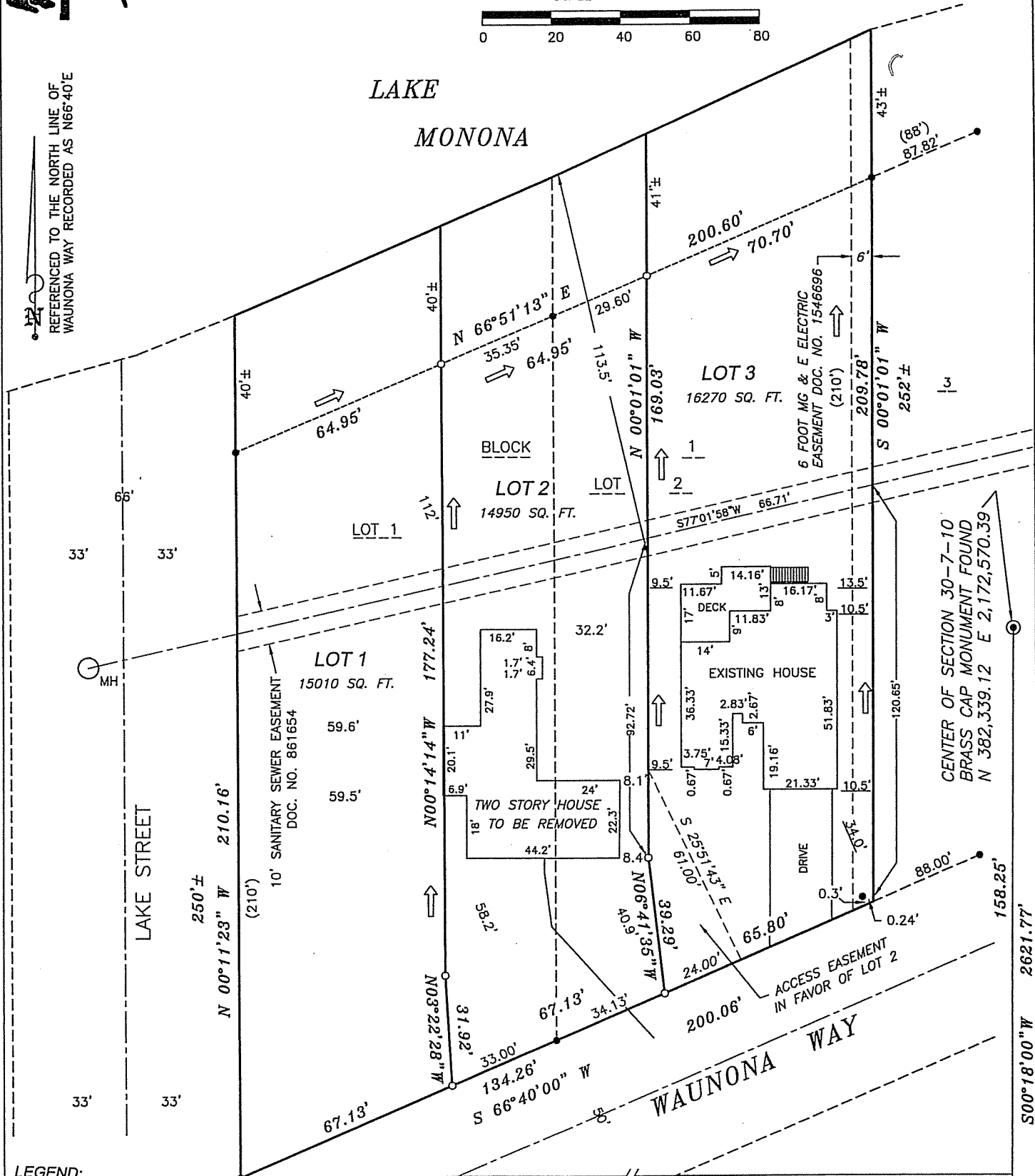
LOT 1 AND LOT 2, BLOCK 1, RAYWOOD HEIGHTS,  
LOCATED IN PART OF THE SE 1/4 OF THE SW 1/4  
OF SECTION 19 AND PART OF THE NE 1/4 OF THE  
NW 1/4 OF SECTION 30, ALL IN T7N, R10E, CITY  
OF MADISON, DANE COUNTY, WISCONSIN

SCALE 1" = 40'



LAKE  
MONONA

REFERENCED TO THE NORTH LINE OF  
WAUNONA WAY RECORDED AS N66°40'E



- LEGEND:**
- = 1" IRON STAKE FOUND
  - = IRON PIPE SET  
1" X 24" MIN. WT. =  
1.13# / LIN. FT.
  - ( ) = RECORDED AS DATA
  - ↔ = DIRECTION OF DRAINAGE

CENTER OF SECTION 30-7-10  
BRASS CAP MONUMENT FOUND

2463.52'

S00°18'00" W 2621.77'

3

CENTER OF SECTION 30-7-10  
BRASS CAP MONUMENT FOUND  
N 382,339.12 E 2,172,570.39

(88')  
87.82'

43'±

209.78'  
252'±

200.60'  
70.70'

LOT 3  
16270 SQ. FT.

LOT 2  
14950 SQ. FT.

LOT 1  
15010 SQ. FT.

LAKE STREET

WAUNONA WAY

S90°00'00" W 988.08'

25'

25'

33'

33'

33'

33'

66'

40'±

40'±

40'±

40'±

40'±

40'±

40'±

40'±

40'±

40'±

40'±

40'±

40'±

40'±