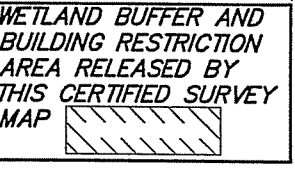
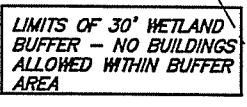


AT SIGGELKOW PRESERVE, LOCATED IN THE SW 1/4 OF THE SE 1/4 OF SECTION 26, T7N, R10E, IN THE CITY OF MADISON, DANE COUNTY, WISCONSIN.

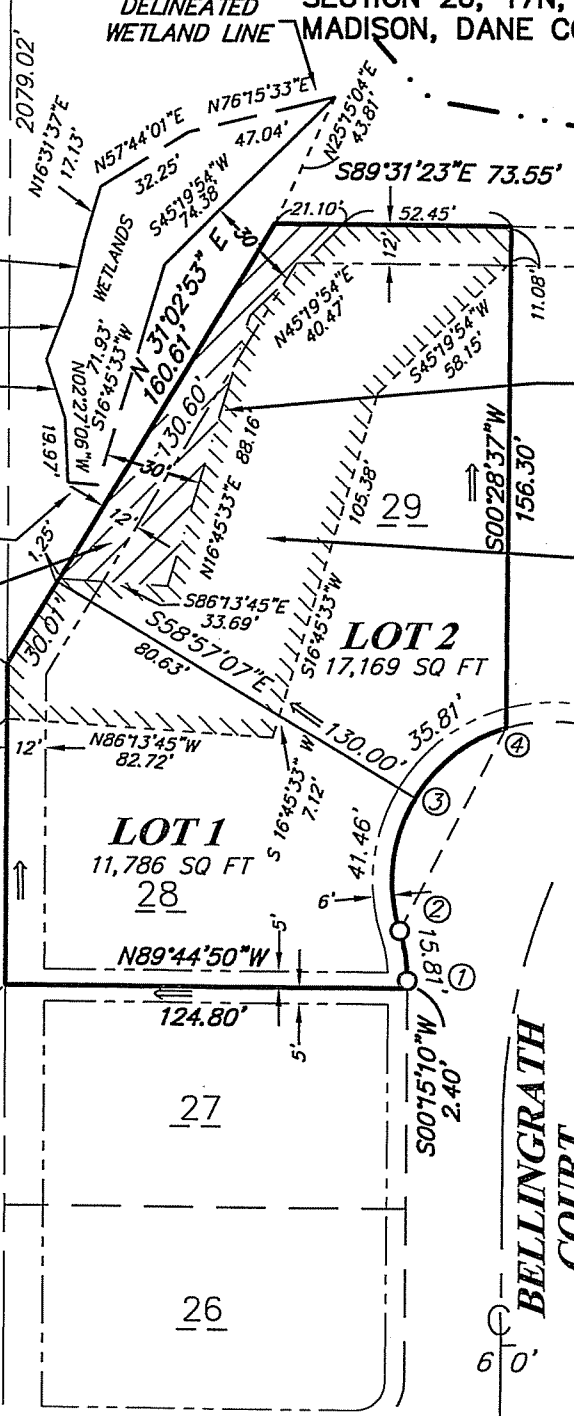
NOTES PER PLAT OF SECRET PLACES AT SIGGELKOW PRESERVE:
 1) ALL LOTS WITHIN THIS CSM (PLAT) ARE SUBJECT TO A NON-EXCLUSIVE EASEMENT FOR DRAINAGE PURPOSES WHICH SHALL BE A MINIMUM OF 5- FEET IN WIDTH MEASURED FROM THE PROPERTY LINE TO THE INTERIOR OF EACH LOT, EXCEPT THAT THE EASEMENTS SHALL BE 12- FEET IN WIDTH ON THE WEST LINE OF LOT 1 OF THIS CSM (EXTERIOR OF THE ORIGINAL PLAT). EASEMENTS SHALL NOT BE REQUIRED ON PROPERTY LINES SHARED WITH GREENWAYS, PRIVATE OPEN SPACE AREAS OR PUBLIC STREETS
 2) THE INTRA-BLOCK DRAINAGE EASEMENTS SHALL BE GRADED WITH THE CONSTRUCTION OF EACH PRINCIPLE STRUCTURE IN ACCORDANCE WITH THE APPROVED STORM WATER DRAINAGE PLAN ON FILE WITH THE CITY ENGINEER AND ZONING ADMINISTRATOR, AS AMENDED IN ACCORDANCE WITH THE MADISON GENERAL ORDINANCES.

LANDS BY OTHERS

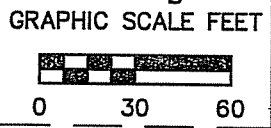
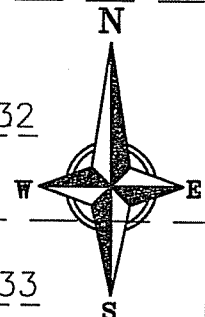


LEGEND

- SECTION CORNER OF RECORD, TYPE OF MONUMENT AS NOTED.
- SET 1 1/4" Ø SOLID ROUND IRON ROD, 24" LONG, 4.17 LBS PER LINEAL FOOT WEIGHT.
- ALL OTHER LOT AND OUTLOT CORNERS ARE MONUMENTED WITH 3/4" X 24" SOLID ROUND IRON RODS, 1.50 LBS. PER LINEAL FOOT WEIGHT.
- (55') "RECORDED AS" INFORMATION
- (DCC MAD) CITY OF MADISON DANE CO. COORD. SYSTEM RECORD DATA
- (NAD 27) CITY OF MADISON 1927 STATE PLANE COORD. SYSTEM RECORD DATA
- WIDTHS NOTED**
- PUBLIC UTILITY EASEMENTS PER SECRET PLACES AT SIGGELKOW PRESERVE. NO POLES OR BURIED CABLES ARE TO BE PLACED SUCH THAT THE INSTALLATION WOULD DISTURB ANY SURVEY MONUMENT. THE DISTURBANCE OF A SURVEY MONUMENT BY ANYONE IS A VIOLATION OF SECTION 236.32 OF THE WISCONSIN STATUTES. UTILITY EASEMENTS AS HEREIN SET FORTH ARE FOR THE USE OF PUBLIC BODIES AND PRIVATE PUBLIC UTILITIES HAVING THE RIGHT TO SERVE THE AREA.
- ARROWS INDICATE THE DIRECTION OF SURFACE DRAINAGE SWALE AT INDIVIDUAL PROPERTY LINES. SAID DRAINAGE SWALE SHALL BE GRADED WITH THE CONSTRUCTION OF EACH PRINCIPLE STRUCTURE AND MAINTAINED BY THE LOT OWNER UNLESS MODIFIED WITH THE APPROVAL OF THE CITY ENGINEER. SEE NOTES 1 AND 2 ABOVE FOR FURTHER INFORMATION.



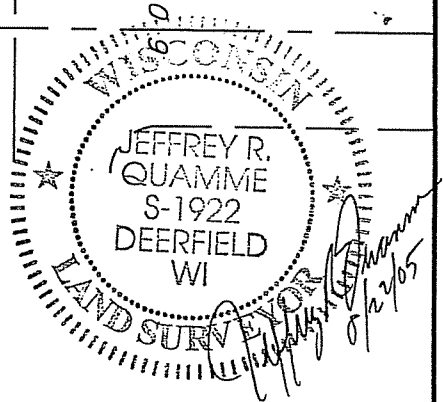
BEARINGS ARE REFERENCED TO THE DANE COUNTY COORDINATE SYSTEM



SCALE 1"=60'

SURVEY REQUESTED BY:
 SECRET PLACES LAND, LLC
 C/O VERIDIAN HOMES, LLC
 6801 SOUTH TOWNE DRIVE
 MADISON, WI 53713

NORTH 1/4 CORNER OF SECTION 35 T7N, R10E, FOUND CONC. MONUMENT WITH BRASS CAP DANE CO COORDINATES (BASED ON MCFARLAND NGS STATION):
 N 467910.57
 E 849874.04
 CITY OF MADISON PUBLISHED COORDINATES WISCONSIN STATE PLANE SOUTH ZONE (NAD 1927):
 N 377,573.45
 E 2,193,381.23
 CITY OF MADISON PUBLISHED DANE COUNTY COORDINATE SYSTEM COORDINATES:
 N 467,910.815
 E 849873.936



DOCUMENT NO. _____
 CERTIFIED SURVEY MAP NO. _____

SURVEYED BY:
 WERBLICH ASSOCIATES