

MARK	REVISION	DATE	BY
60631225P	Designed By: AECOM	2022-03-24	
60631225P			

Scale: 1 IN=50 FT

60631225P
 CITY OF MADISON, DANE COUNTY, WI
 CONTRACT NO: 60631225C
 60631225P
 BUS RAPID TRANSIT
 CITY OF MADISON

SITE PLAN LEGEND

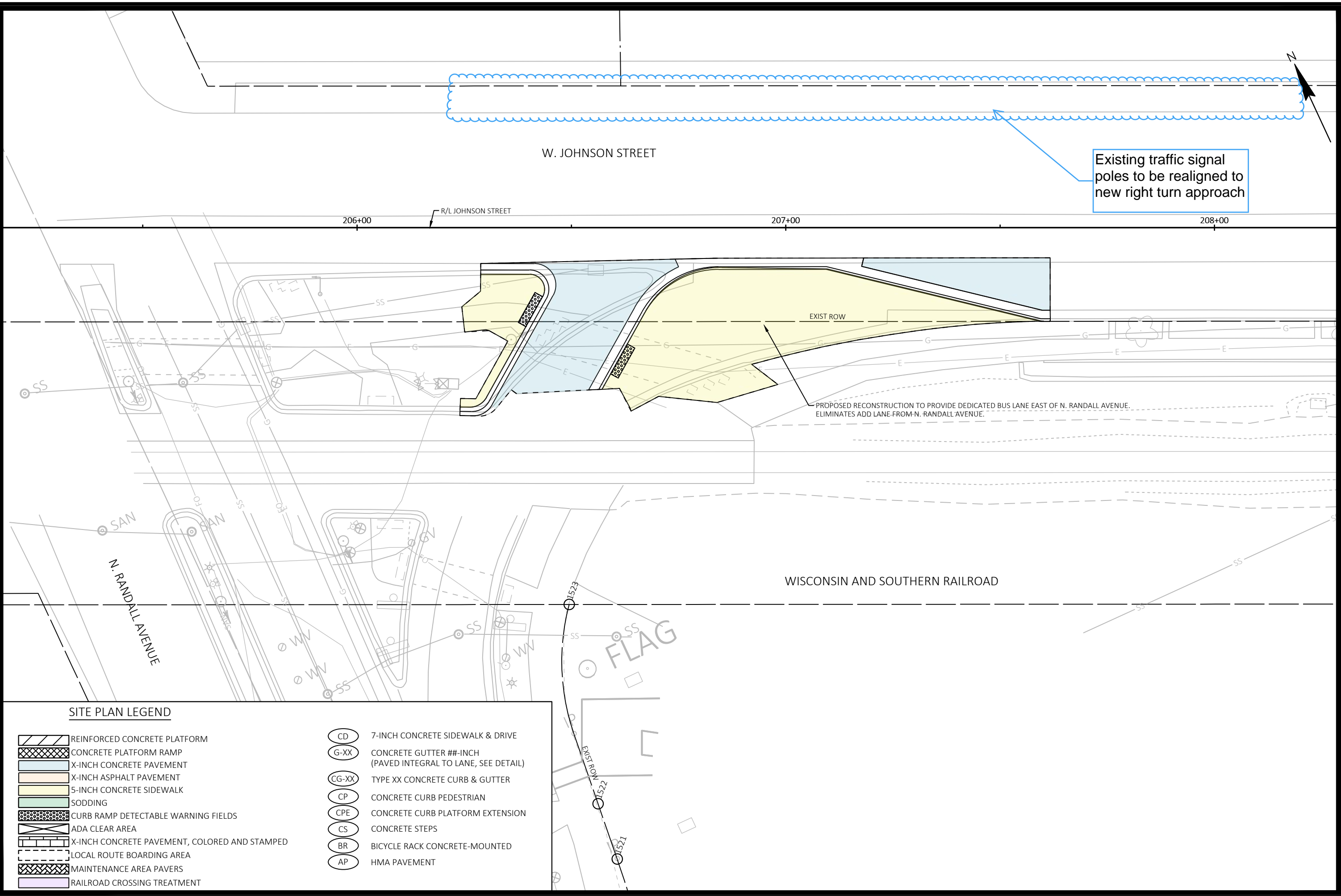
- | | | | |
|--|---|--|--|
| | REINFORCED CONCRETE PLATFORM | | 7-INCH CONCRETE SIDEWALK & DRIVE |
| | CONCRETE PLATFORM RAMP | | CONCRETE GUTTER ##-INCH (PAVED INTEGRAL TO LANE, SEE DETAIL) |
| | X-INCH CONCRETE PAVEMENT | | TYPE XX CONCRETE CURB & GUTTER |
| | X-INCH ASPHALT PAVEMENT | | CONCRETE CURB PEDESTRIAN |
| | 5-INCH CONCRETE SIDEWALK | | CONCRETE CURB PLATFORM EXTENSION |
| | SODDING | | CONCRETE STEPS |
| | CURB RAMP DETECTABLE WARNING FIELDS | | BICYCLE RACK CONCRETE-MOUNTED |
| | ADA CLEAR AREA | | HMA PAVEMENT |
| | X-INCH CONCRETE PAVEMENT, COLORED AND STAMPED | | |
| | LOCAL ROUTE BOARDING AREA | | |
| | MAINTENANCE AREA PAVERS | | |
| | RAILROAD CROSSING TREATMENT | | |

NOTES:

1. NEW CABLING PROPOSED WITHIN EXISTING CONDUIT, NEW CONDUIT TO BE BORED AT SIMILAR DEPTH IF EXISTING CONDUIT IN POOR CONDITION.



60631225P
P-28W



Existing traffic signal poles to be realigned to new right turn approach

PROPOSED RECONSTRUCTION TO PROVIDE DEDICATED BUS LANE EAST OF N. RANDALL AVENUE. ELIMINATES ADD LANE FROM N. RANDALL AVENUE.

SITE PLAN LEGEND

- | | | | |
|--|---|--|--|
| | REINFORCED CONCRETE PLATFORM | | 7-INCH CONCRETE SIDEWALK & DRIVE |
| | CONCRETE PLATFORM RAMP | | CONCRETE GUTTER ##-INCH (PAVED INTEGRAL TO LANE, SEE DETAIL) |
| | X-INCH CONCRETE PAVEMENT | | TYPE XX CONCRETE CURB & GUTTER |
| | X-INCH ASPHALT PAVEMENT | | CONCRETE CURB PEDESTRIAN |
| | 5-INCH CONCRETE SIDEWALK | | CONCRETE CURB PLATFORM EXTENSION |
| | SODDING | | CONCRETE STEPS |
| | CURB RAMP DETECTABLE WARNING FIELDS | | BICYCLE RACK CONCRETE-MOUNTED |
| | ADA CLEAR AREA | | HMA PAVEMENT |
| | X-INCH CONCRETE PAVEMENT, COLORED AND STAMPED | | |
| | LOCAL ROUTE BOARDING AREA | | |
| | MAINTENANCE AREA PAVERS | | |
| | RAILROAD CROSSING TREATMENT | | |

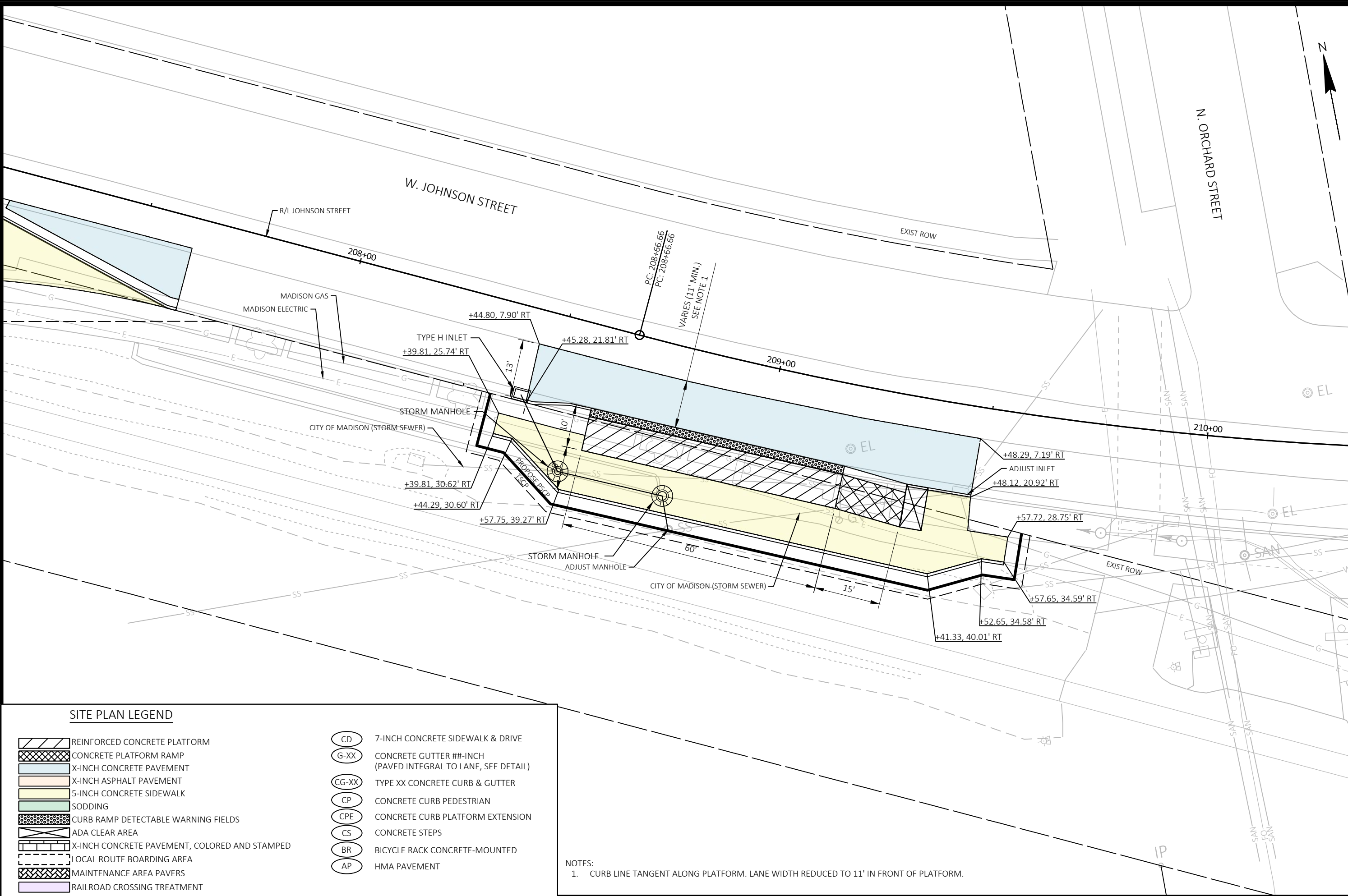
MARK	REVISION	DATE	BY

Designed By: AECOM | Date: 2022-03-24
60631225P

SITE PLAN: EB W. JOHNSON STREET AND N. RANDALL AVENUE RECONSTRUCTION 60631225P
 CITY OF MADISON, DANE COUNTY, WI
 BUS RAPID TRANSIT
 CITY OF MADISON
 CONTRACT NO: 60631225C



60631225P
 P-29W



MARK	REVISION	DATE	BY
	Designed By: AECOM	2022-03-24	60631225P
	60631225P		

60631225P
 CITY OF MADISON, DANE COUNTY, WI
 CONTRACT NO: 60631225C

SITE PLAN: EB W. JOHNSON STREET AT N. ORCHARD STREET
 BUS RAPID TRANSIT
 CITY OF MADISON



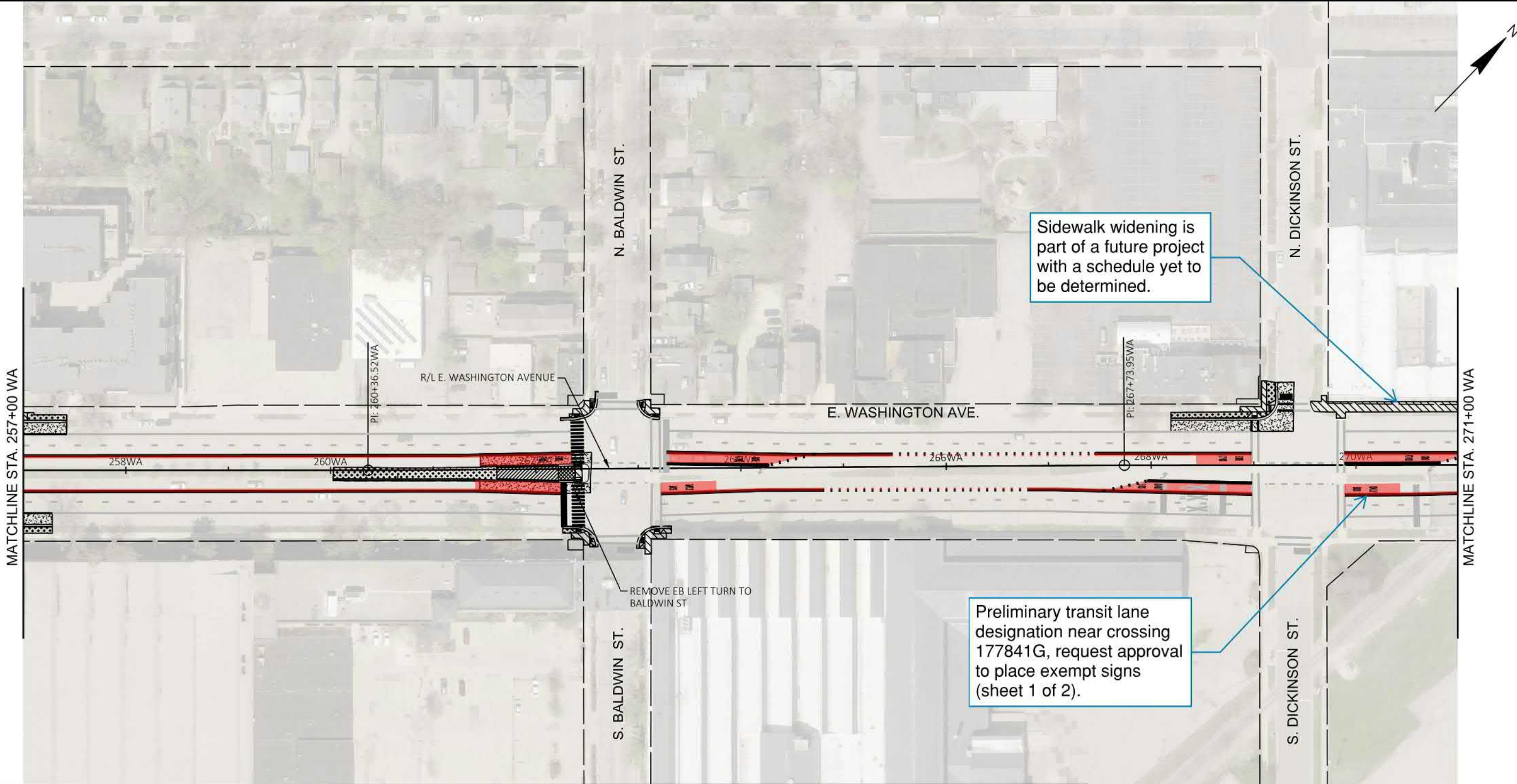
60631225P
 P-24W

FILE NAME: C:\P\WORKING\AECOM_DS20_NA_2019\MEGHAN.MCCARTHY@AECOM.COM\DM586348\050224B-PN.DWG
 LAYOUT NAME - Plan 1 IN 20 FT
 LAST PLOT DATE - 2022-03-24

SITE PLAN LEGEND

- | | | | |
|--|---|--|---|
| | REINFORCED CONCRETE PLATFORM | | 7-INCH CONCRETE SIDEWALK & DRIVE |
| | CONCRETE PLATFORM RAMP | | CONCRETE GUTTER ##-INCH
(PAVED INTEGRAL TO LANE, SEE DETAIL) |
| | X-INCH CONCRETE PAVEMENT | | TYPE XX CONCRETE CURB & GUTTER |
| | X-INCH ASPHALT PAVEMENT | | CONCRETE CURB PEDESTRIAN |
| | 5-INCH CONCRETE SIDEWALK | | CONCRETE CURB PLATFORM EXTENSION |
| | SODDING | | CONCRETE STEPS |
| | CURB RAMP DETECTABLE WARNING FIELDS | | BICYCLE RACK CONCRETE-MOUNTED |
| | ADA CLEAR AREA | | HMA PAVEMENT |
| | X-INCH CONCRETE PAVEMENT, COLORED AND STAMPED | | |
| | LOCAL ROUTE BOARDING AREA | | |
| | MAINTENANCE AREA PAVERS | | |
| | RAILROAD CROSSING TREATMENT | | |

NOTES:
 1. CURB LINE TANGENT ALONG PLATFORM. LANE WIDTH REDUCED TO 11' IN FRONT OF PLATFORM.



- MARKING LEGEND**
- ① PAVEMENT MARKING EPOXY, LINE, 4-INCH (SOLID WHITE)
 - ② PAVEMENT MARKING EPOXY, LINE, 4-INCH (10' LINE 30' GAP)(WHITE)
 - ③ PAVEMENT MARKING EPOXY, LINE, 4-INCH (SOLID YELLOW)
 - ④ PAVEMENT MARKING EPOXY, LINE, 4-INCH (10' LINE 30' GAP)(YELLOW)
 - ⑤ PAVEMENT MARKING EPOXY, DOUBLE LINE, 4-INCH (SOLID YELLOW)
 - ⑥ PAVEMENT MARKING EPOXY, LINE, 8-INCH (SOLID WHITE)
 - ⑦ PAVEMENT MARKING EPOXY, LINE, 8-INCH (2' LINE 6' GAP)(WHITE)
 - ⑧ PAVEMENT MARKING EPOXY, LINE, 8-INCH (5' LINE 5' GAP)(WHITE)
 - ⑨ PAVEMENT MARKING EPOXY, LINE, 12-INCH (SOLID WHITE)
 - ⑩ PAVEMENT MARKING EPOXY, RADIUS LINE, 4-INCH (5' LINE, 5' GAP)(SOLID WHITE)
 - ⑪ PAVEMENT MARKING EPOXY, CROSSWALK, 6-INCH (SOLID WHITE)
 - ⑫ PAVEMENT MARKING EPOXY, STOP LINE, 24-INCH
 - ⑬ PAVEMENT MARKING EPOXY, CURB

- ⑭ PAVEMENT MARKING EPOXY, MEDIAN NOSE
- ⑮ PAVEMENT MARKING EPOXY, PARKING STALL
- ⑯ PAVEMENT MARKING EPOXY, SYMBOL, BIKE SHARROW
- ⑰ PAVEMENT MARKING EPOXY, SYMBOL, BIKE LANE
- ⑱ PAVEMENT MARKING EPOXY, SYMBOL, BIKE STRAIGHT ARROW
- ⑲ PAVEMENT MARKING EPOXY, SYMBOL, BIKE LANE & STRAIGHT ARROW
- ⑳ PAVEMENT MARKING EPOXY, SYMBOL, LEFT ARROW
- ㉑ PAVEMENT MARKING EPOXY, SYMBOL, RIGHT ARROW
- ㉒ PAVEMENT MARKING EPOXY, SYMBOL, STRAIGHT ARROW
- ㉓ PAVEMENT MARKING EPOXY, SYMBOL, STRAIGHT & LEFT ARROW
- ㉔ PAVEMENT MARKING EPOXY, SYMBOL, STRAIGHT & RIGHT ARROW
- ㉕ PAVEMENT MARKING EPOXY, WORD, ONLY
- ㉖ PAVEMENT MARKING EPOXY, SYMBOL, DIAMOND

DEDICATED BUS LANE. BUS ONLY MARKINGS AND BUS ONLY SIGNAGE REQUIRED.

NOTE:

- SEE CITY OF MADISON SDD 'PAVEMENT MARKING DETAILS', PAGE 1-4' FOR MAINLINE, CROSSWALK, CURB, BIKE LANE, AND RESTRICTED TRAFFIC LANE MARKINGS.
- SEE CONSTRUCTION DETAILS FOR PLATFORM CURB FACE MARKINGS.
- THE WORD "BUS" SHALL BE PLACED 20' BEYOND THE START OF THE LONGITUDINAL MARKINGS, AND PLACE THE WORD "ONLY" AT A 32' SPACING BEYOND THE "BUS" MARKING. SEE PLAN SHEETS FOR SPECIFIC LOCATIONS.
- SEE WISDOT SDD 'PAVEMENT MARKING (TURN LANES)' FOR WORD AND ARROW PLACEMENT AT INTERSECTIONS.

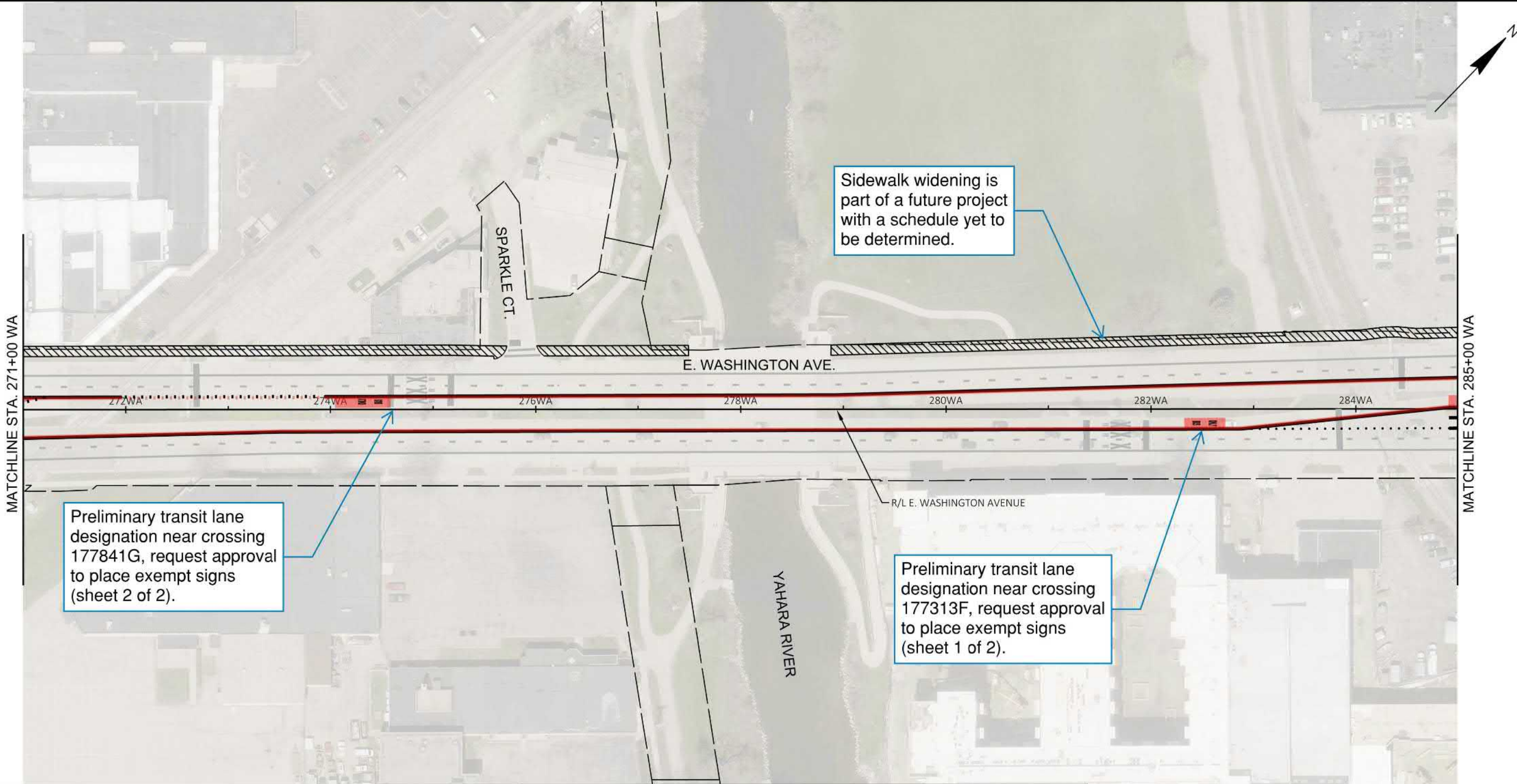
MARK	REVISION	DATE	BY

60631225P
 CITY OF MADISON, DANE COUNTY, WI
 CONTRACT NO: 60631225C

PAVEMENT MARKING & PERMANENT SIGNING
 BUS RAPID TRANSIT
 CITY OF MADISON

60631225P
 M7-E

FILE NAME: C:\PWORKING\AECOM_DS20_NA_2019\MFEGHAN.MCCARTHY@AECOM.COM\00107215\024501_P.M.DWG
 LAYOUT NAME - 024507 .dgn
 LAST PLOT DATE - 2021-08-25
 Scale: 1"=100 FT



MARK	REVISION	DATE	BY
60631225P	Designed By: AECOM	2021-09-03	Scale: 1"=100 FT

60631225P
 CITY OF MADISON, DANE COUNTY, WI
 CONTRACT NO: 60631225C

PAVEMENT MARKING & PERMANENT SIGNING
 BUS RAPID TRANSIT
 CITY OF MADISON



60631225P
 M8-E

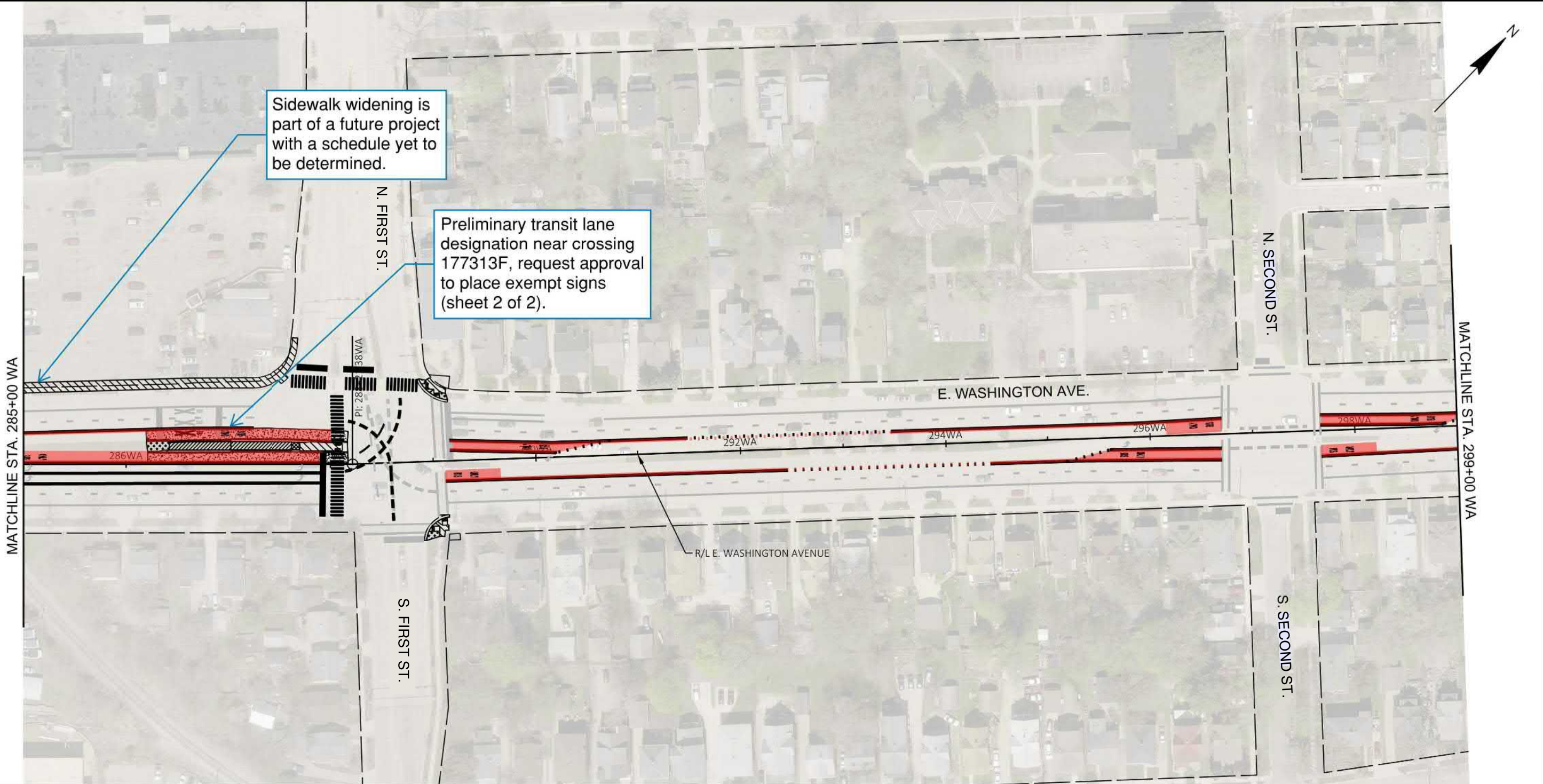
FILE NAME: C:\P\WORKING\AECOM_DS20_NA_2019\MEGHAN.MCCARTHY@AECOM.COM\00107215\024501_PM.DWG
 LAYOUT NAME - 024508.plt
 LAST PLOT DATE - 2021-09-03

- MARKING LEGEND**
- ① PAVEMENT MARKING EPOXY, LINE, 4-INCH (SOLID WHITE)
 - ② PAVEMENT MARKING EPOXY, LINE, 4-INCH (10' LINE 30' GAP)(WHITE)
 - ③ PAVEMENT MARKING EPOXY, LINE, 4-INCH (SOLID YELLOW)
 - ④ PAVEMENT MARKING EPOXY, LINE, 4-INCH (10' LINE 30' GAP)(YELLOW)
 - ⑤ PAVEMENT MARKING EPOXY, DOUBLE LINE, 4-INCH (SOLID YELLOW)
 - ⑥ PAVEMENT MARKING EPOXY, LINE, 8-INCH (SOLID WHITE)
 - ⑦ PAVEMENT MARKING EPOXY, LINE, 8-INCH (2' LINE 6' GAP)(WHITE)
 - ⑧ PAVEMENT MARKING EPOXY, LINE, 8-INCH (5' LINE 5' GAP)(WHITE)
 - ⑨ PAVEMENT MARKING EPOXY, LINE, 12-INCH (SOLID WHITE)
 - ⑩ PAVEMENT MARKING EPOXY, RADIUS LINE, 4-INCH (5' LINE, 5' GAP)(SOLID WHITE)
 - ⑪ PAVEMENT MARKING EPOXY, CROSSWALK, 6-INCH (SOLID WHITE)
 - ⑫ PAVEMENT MARKING EPOXY, STOP LINE, 24-INCH
 - ⑬ PAVEMENT MARKING EPOXY, CURB

- ⑭ PAVEMENT MARKING EPOXY, MEDIAN NOSE
- ⑮ PAVEMENT MARKING EPOXY, PARKING STALL
- ⑯ PAVEMENT MARKING EPOXY, SYMBOL, BIKE SHARROW
- ⑰ PAVEMENT MARKING EPOXY, SYMBOL, BIKE LANE
- ⑱ PAVEMENT MARKING EPOXY, SYMBOL, BIKE STRAIGHT ARROW
- ⑲ PAVEMENT MARKING EPOXY, SYMBOL, BIKE LANE & STRAIGHT ARROW
- ⑳ PAVEMENT MARKING EPOXY, SYMBOL, LEFT ARROW
- ㉑ PAVEMENT MARKING EPOXY, SYMBOL, RIGHT ARROW
- ㉒ PAVEMENT MARKING EPOXY, SYMBOL, STRAIGHT ARROW
- ㉓ PAVEMENT MARKING EPOXY, SYMBOL, STRAIGHT & LEFT ARROW
- ㉔ PAVEMENT MARKING EPOXY, SYMBOL, STRAIGHT & RIGHT ARROW
- ㉕ PAVEMENT MARKING EPOXY, WORD, ONLY
- ㉖ PAVEMENT MARKING EPOXY, SYMBOL, DIAMOND

DEDICATED BUS LANE. BUS ONLY MARKINGS AND BUS ONLY SIGNAGE REQUIRED.

NOTE:
 -SEE CITY OF MADISON SDD 'PAVEMENT MARKING DETAILS , PAGE 1-4' FOR MAINLINE, CROSSWALK, CURB, BIKE LANE, AND RESTRICTED TRAFFIC LANE MARKINGS.
 -SEE CONSTRUCTION DETAILS FOR PLATFORM CURB FACE MARKINGS.
 -THE WORD "BUS" SHALL BE PLACED 20' BEYOND THE START OF THE LONGITUDINAL MARKINGS, AND PLACE THE WORD "ONLY" AT A 32' SPACING BEYOND THE "BUS" MARKING. SEE PLAN SHEETS FOR SPECIFIC LOCATIONS.
 -SEE WISDOT SDD 'PAVEMENT MARKING (TURN LANES)' FOR WORD AND ARROW PLACEMENT AT INTERSECTIONS.



MARKING LEGEND

① PAVEMENT MARKING EPOXY, LINE, 4-INCH (SOLID WHITE)
② PAVEMENT MARKING EPOXY, LINE, 4-INCH (10' LINE 30' GAP)(WHITE)
③ PAVEMENT MARKING EPOXY, LINE, 4-INCH (SOLID YELLOW)
④ PAVEMENT MARKING EPOXY, LINE, 4-INCH (10' LINE 30' GAP)(YELLOW)
⑤ PAVEMENT MARKING EPOXY, DOUBLE LINE, 4-INCH (SOLID YELLOW)
⑥ PAVEMENT MARKING EPOXY, LINE, 8-INCH (SOLID WHITE)
⑦ PAVEMENT MARKING EPOXY, LINE, 8-INCH (2' LINE 6' GAP)(WHITE)
⑧ PAVEMENT MARKING EPOXY, LINE, 8-INCH (5' LINE 5' GAP)(WHITE)
⑨ PAVEMENT MARKING EPOXY, LINE, 12-INCH (SOLID WHITE)
⑩ PAVEMENT MARKING EPOXY, RADIUS LINE, 4-INCH (5' LINE, 5' GAP)(SOLID WHITE)
⑪ PAVEMENT MARKING EPOXY, CROSSWALK, 6-INCH (SOLID WHITE)
⑫ PAVEMENT MARKING EPOXY, STOP LINE, 24-INCH
⑬ PAVEMENT MARKING EPOXY, CURB

⑭ PAVEMENT MARKING EPOXY, MEDIAN NOSE
⑮ PAVEMENT MARKING EPOXY, PARKING STALL
⑯ PAVEMENT MARKING EPOXY, SYMBOL, BIKE SHARFOW
⑰ PAVEMENT MARKING EPOXY, SYMBOL, BIKE LANE
⑱ PAVEMENT MARKING EPOXY, SYMBOL, BIKE STRAIGHT ARROW
⑲ PAVEMENT MARKING EPOXY, SYMBOL, BIKE LANE & STRAIGHT ARROW
⑳ PAVEMENT MARKING EPOXY, SYMBOL, LEFT ARROW
㉑ PAVEMENT MARKING EPOXY, SYMBOL, RIGHT ARROW
㉒ PAVEMENT MARKING EPOXY, SYMBOL, STRAIGHT ARROW
㉓ PAVEMENT MARKING EPOXY, SYMBOL, STRAIGHT & LEFT ARROW
㉔ PAVEMENT MARKING EPOXY, SYMBOL, STRAIGHT & RIGHT ARROW
㉕ PAVEMENT MARKING EPOXY, WORD, ONLY
㉖ PAVEMENT MARKING EPOXY, SYMBOL, DIAMOND

DEDICATED BUS LANE. BUS ONLY MARKINGS AND BUS ONLY SIGNAGE REQUIRED.

NOTE:

- SEE CITY OF MADISON SDD 'PAVEMENT MARKING DETAILS , PAGE 1-4' FOR MAINLINE, CROSSWALK, CURB, BIKE LANE, AND RESTRICTED TRAFFIC LANE MARKINGS.
- SEE CONSTRUCTION DETAILS FOR PLATFORM CURB FACE MARKINGS.
- THE WORD "BUS" SHALL BE PLACED 20' BEYOND THE START OF THE LONGITUDINAL MARKINGS, AND PLACE THE WORD "ONLY" AT A 32' SPACING BEYOND THE "BUS" MARKING. SEE PLAN SHEETS FOR SPECIFIC LOCATIONS.
- SEE WISDOT SDD 'PAVEMENT MARKING (TURN LAVES)' FOR WORD AND ARROW PLACEMENT AT INTERSECTIONS.

MARK	REVISION	DATE	BY

Designed By: AECOM/Date: 2021-08-25
60631225P

60631225P

CITY OF MADISON, DANE COUNTY, WI

CONTRACT NO: 60631225C

PAVEMENT MARKING & PERMANENT SIGNING

BUS RAPID TRANSIT

CITY OF MADISON

60631225P

M9-E

FILE NAME: C:\P\WORKING\AECOM_DS20_NA_2019\MEGHAN.MCCARTHY@AECOM.COM\00107215\024501_P.M.DWG
LAYOUT NAME - 024509_ptm
LAST PLOT DATE - 2021-08-25