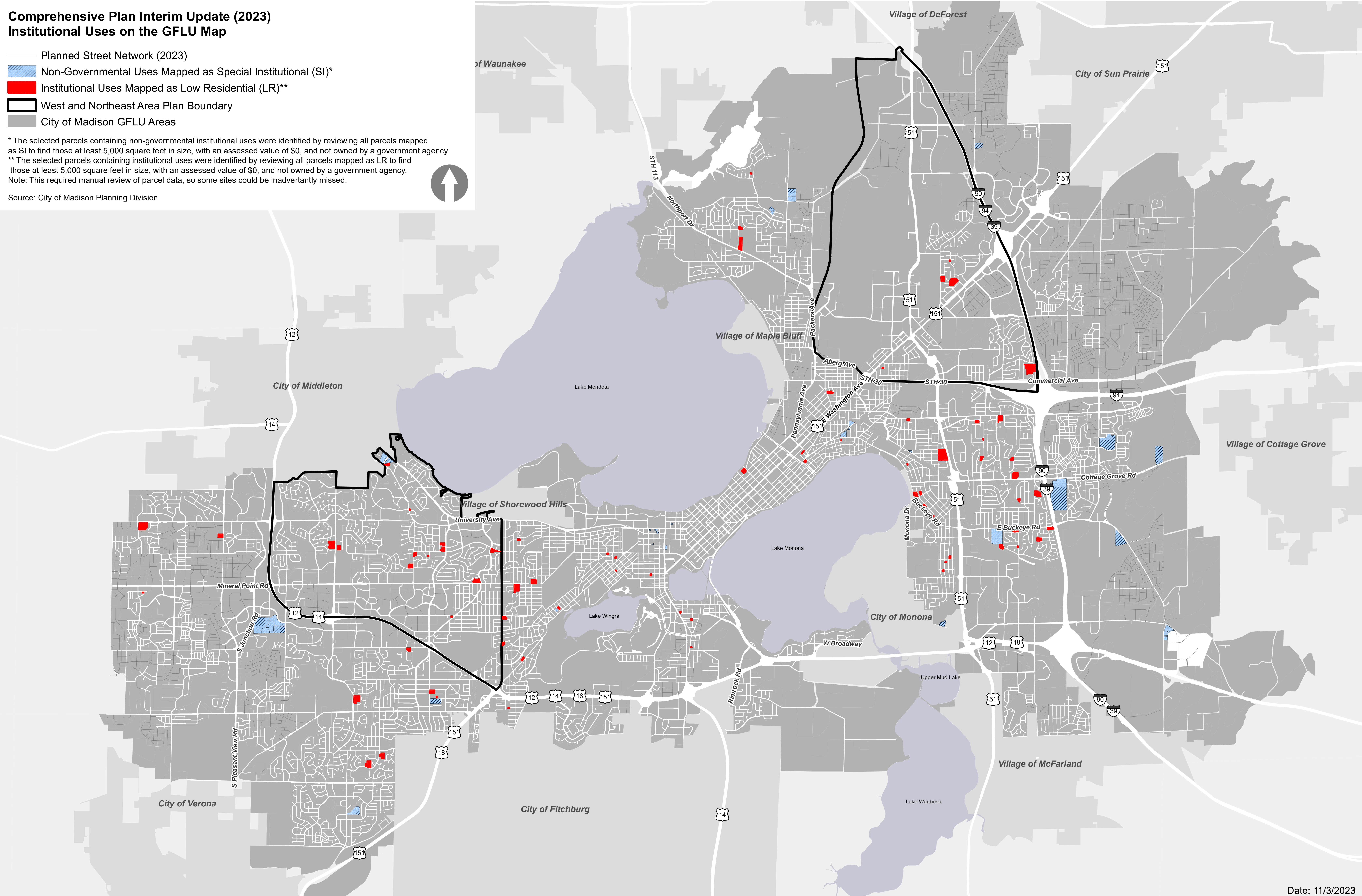


Comprehensive Plan Interim Update (2023)
Institutional Uses on the GFLU Map

- Planned Street Network (2023)
- Non-Governmental Uses Mapped as Special Institutional (SI)*
- Institutional Uses Mapped as Low Residential (LR)**
- West and Northeast Area Plan Boundary
- City of Madison GFLU Areas

* The selected parcels containing non-governmental institutional uses were identified by reviewing all parcels mapped as SI to find those at least 5,000 square feet in size, with an assessed value of \$0, and not owned by a government agency.
** The selected parcels containing institutional uses were identified by reviewing all parcels mapped as LR to find those at least 5,000 square feet in size, with an assessed value of \$0, and not owned by a government agency.
Note: This required manual review of parcel data, so some sites could be inadvertently missed.

Source: City of Madison Planning Division



Comprehensive Plan Interim Update (2023) Institutional Uses on the GFLU Map

Planned Street Network (2023)

 Non-Governmental Uses Mapped as SI*

 Institutional Uses Mapped as LR**

 West and Northeast Area Plan Boundary

Generalized Future Land Use

 Low Residential (LR)

 Low-Medium Residential (LMR)

 Medium Residential (MR)

 High Residential (HR)

Neighborhood Mixed Use (NMU)

 Community Mixed Use (CMU)

* The selected parcels containing non-governmental institutional uses were identified by reviewing all parcels mapped as SI to find those at least 5,000 square feet in size, with an assessed value of \$0, and not owned by a government agency.

** The selected parcels containing institutional uses were identified by reviewing all parcels mapped as LR to find those at least 5,000 square feet in size, with an assessed value of \$0, and not owned by a government agency.

Note: This required manual review of parcel data, so some sites could be inadvertently missed.

Source: City of Madison Planning Division

