

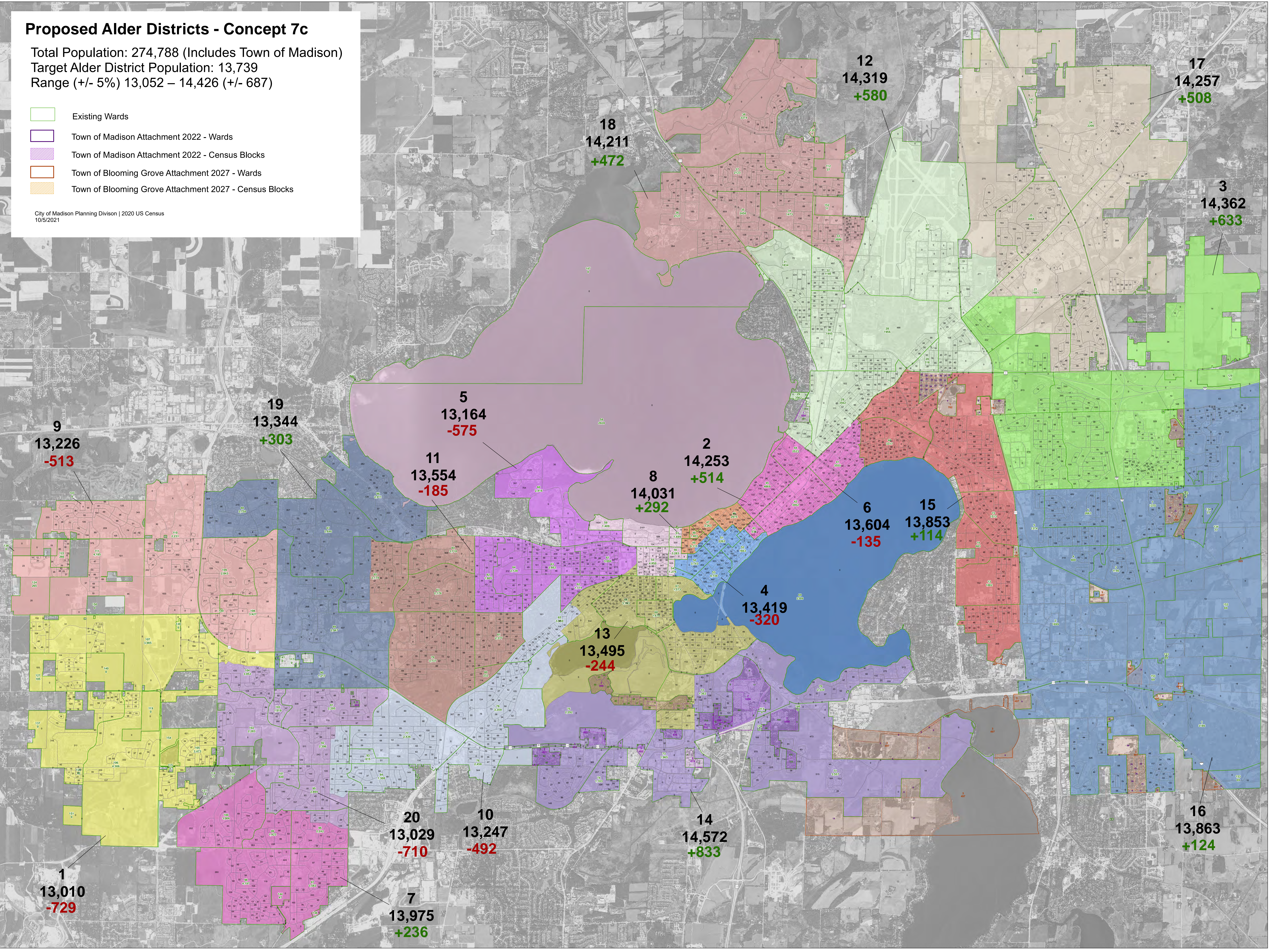
# Proposed Alder Districts - Concept 7c

Total Population: 274,788 (Includes Town of Madison)

Target Alder District Population: 13,739  
Range (+/- 5%) 13,052 – 14,426 (+/- 687)

- Existing Wards
- Town of Madison Attachment 2022 - Wards
- Town of Madison Attachment 2022 - Census Blocks
- Town of Blooming Grove Attachment 2027 - Wards
- Town of Blooming Grove Attachment 2027 - Census Blocks

City of Madison Planning Division | 2020 US Census  
10/5/2021



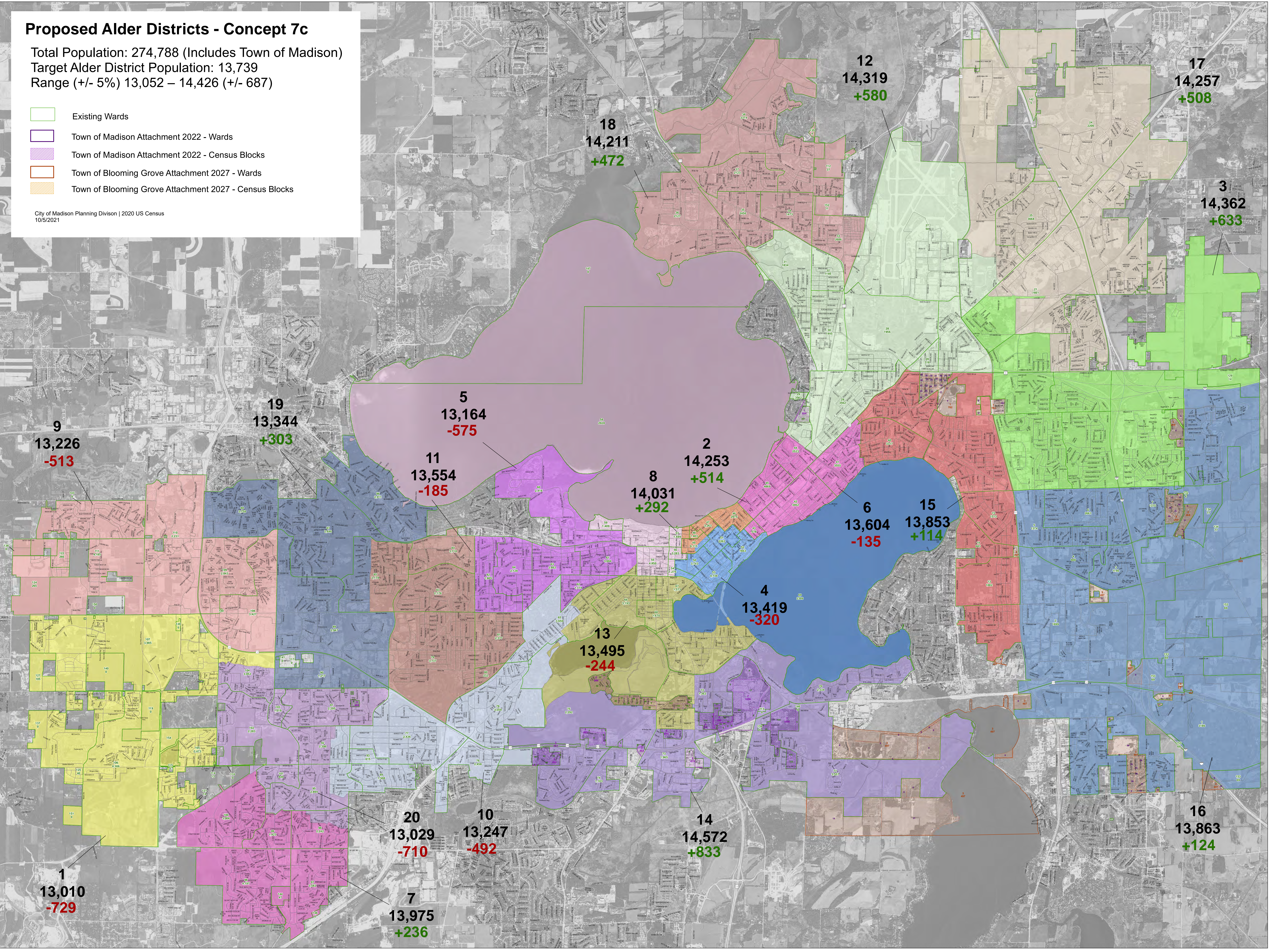
# Proposed Alder Districts - Concept 7c

Total Population: 274,788 (Includes Town of Madison)

Target Alder District Population: 13,739  
Range (+/- 5%) 13,052 – 14,426 (+/- 687)

- Existing Wards
- Town of Madison Attachment 2022 - Wards
- Town of Madison Attachment 2022 - Census Blocks
- Town of Blooming Grove Attachment 2027 - Wards
- Town of Blooming Grove Attachment 2027 - Census Blocks

City of Madison Planning Division | 2020 US Census  
10/5/2021



# Proposed Alder Districts - Concept 7c

## Population By Race or Ethnicity

Total Population: 274,788 (Includes Town of Madison)

Target Alder District Population: 13,739

Range (+/- 5%) 13,052 – 14,426 (+/- 687)

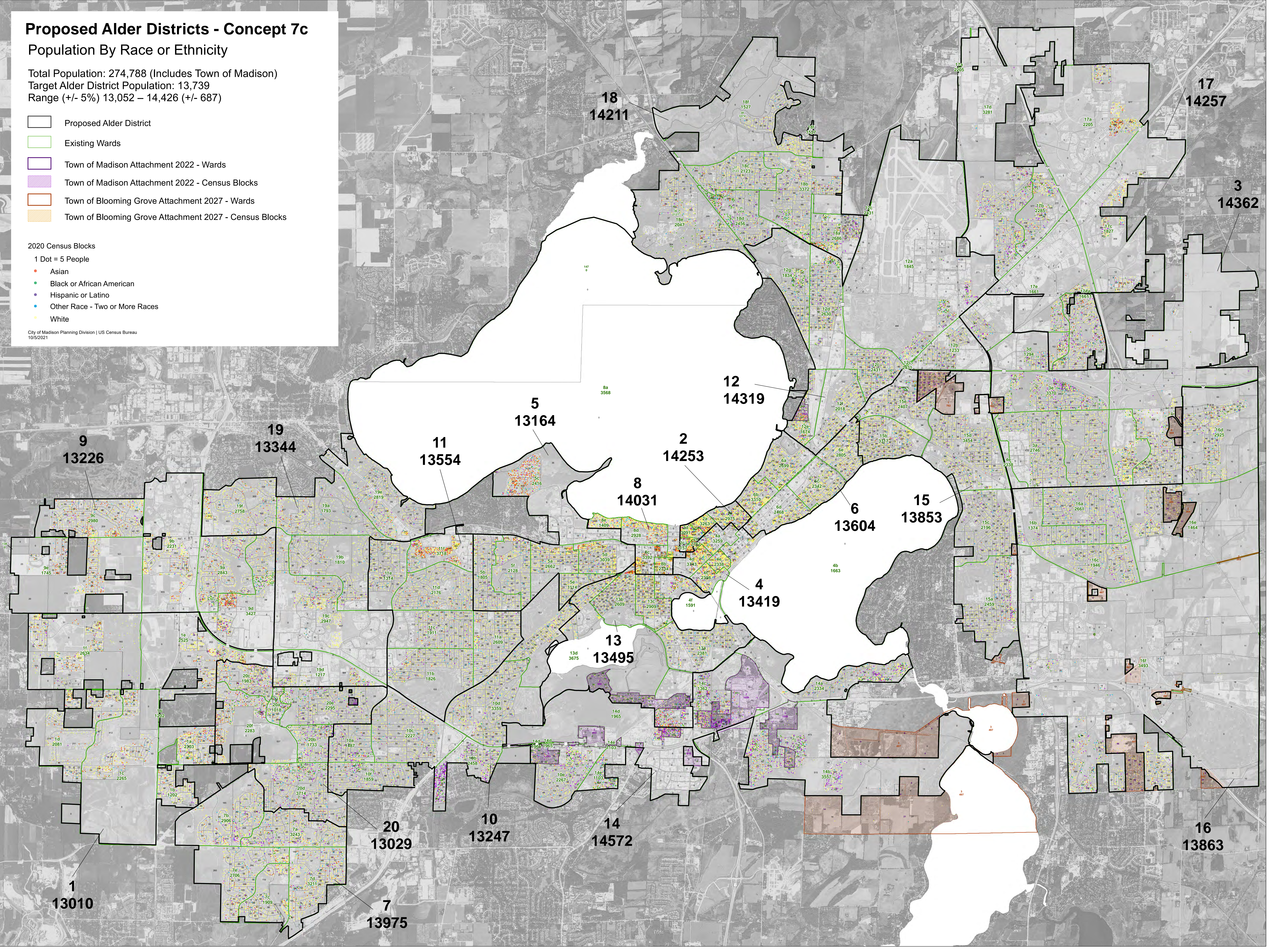
- Proposed Alder District
- Existing Wards
- Town of Madison Attachment 2022 - Wards
- Town of Madison Attachment 2022 - Census Blocks
- Town of Blooming Grove Attachment 2027 - Wards
- Town of Blooming Grove Attachment 2027 - Census Blocks

### 2020 Census Blocks

1 Dot = 5 People

- Asian
- Black or African American
- Hispanic or Latino
- Other Race - Two or More Races
- White

City of Madison Planning Division | US Census Bureau  
10/5/2021



# Proposed Alder Districts - Concept 7c

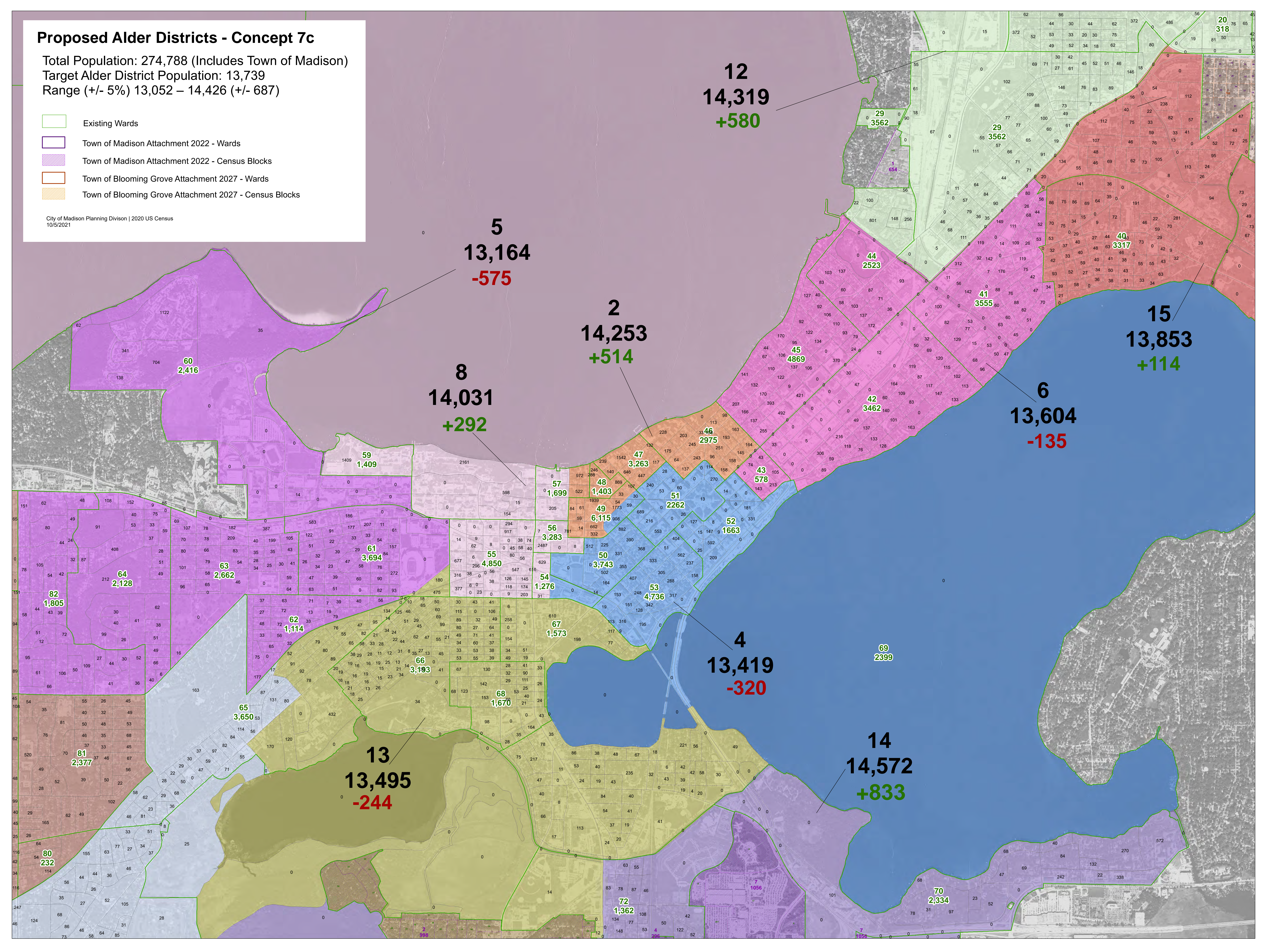
Total Population: 274,788 (Includes Town of Madison)

Target Alder District Population: 13,739

Range (+/- 5%) 13,052 – 14,426 (+/- 687)


- Existing Wards
- Town of Madison Attachment 2022 - Wards
- Town of Madison Attachment 2022 - Census Blocks
- Town of Blooming Grove Attachment 2027 - Wards
- Town of Blooming Grove Attachment 2027 - Census Blocks

City of Madison Planning Division | 2020 US Census  
10/5/2021

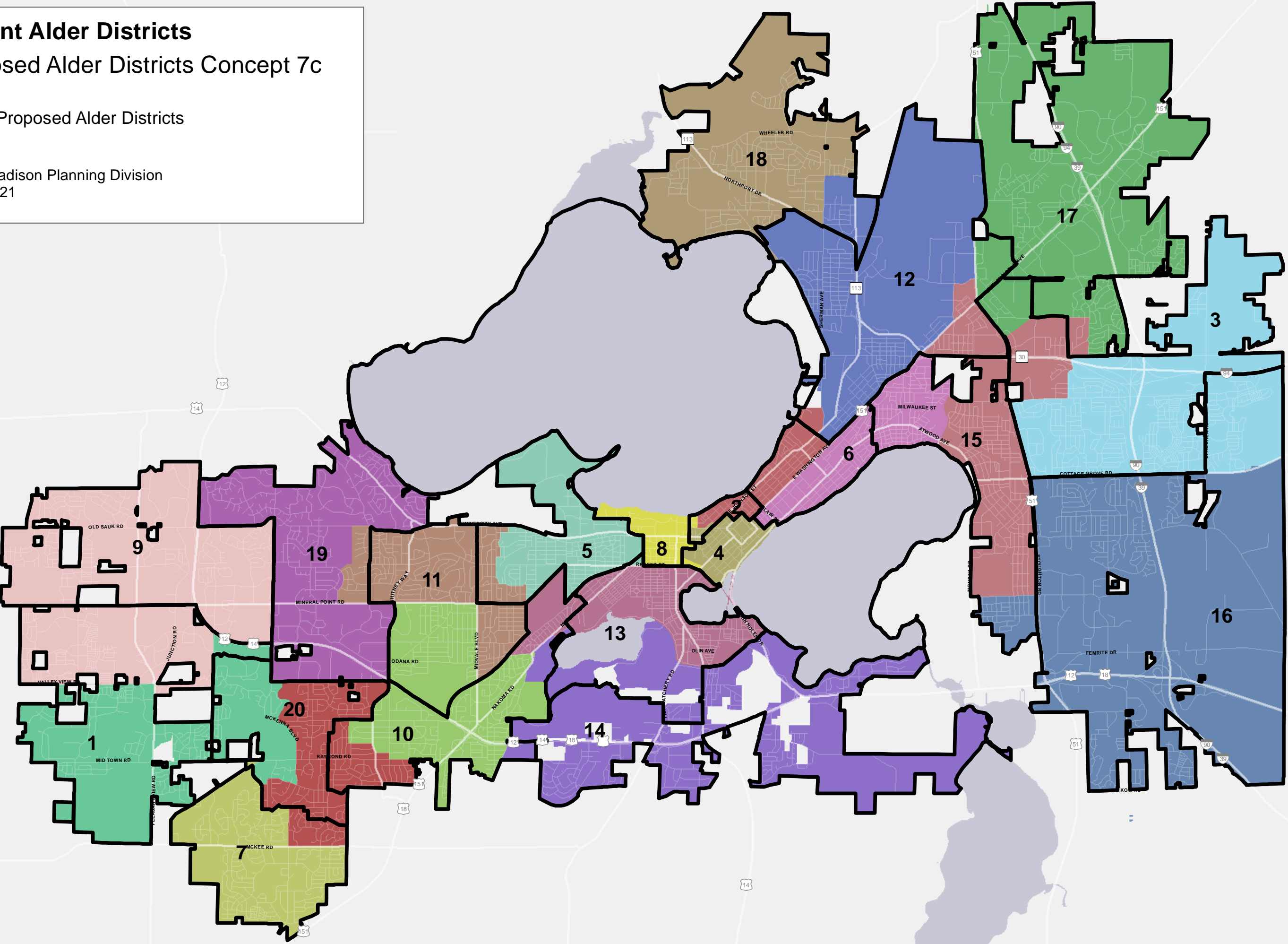


# Current Alder Districts

## Proposed Alder Districts Concept 7c


 Proposed Alder Districts

City of Madison Planning Division  
Oct 5, 2021

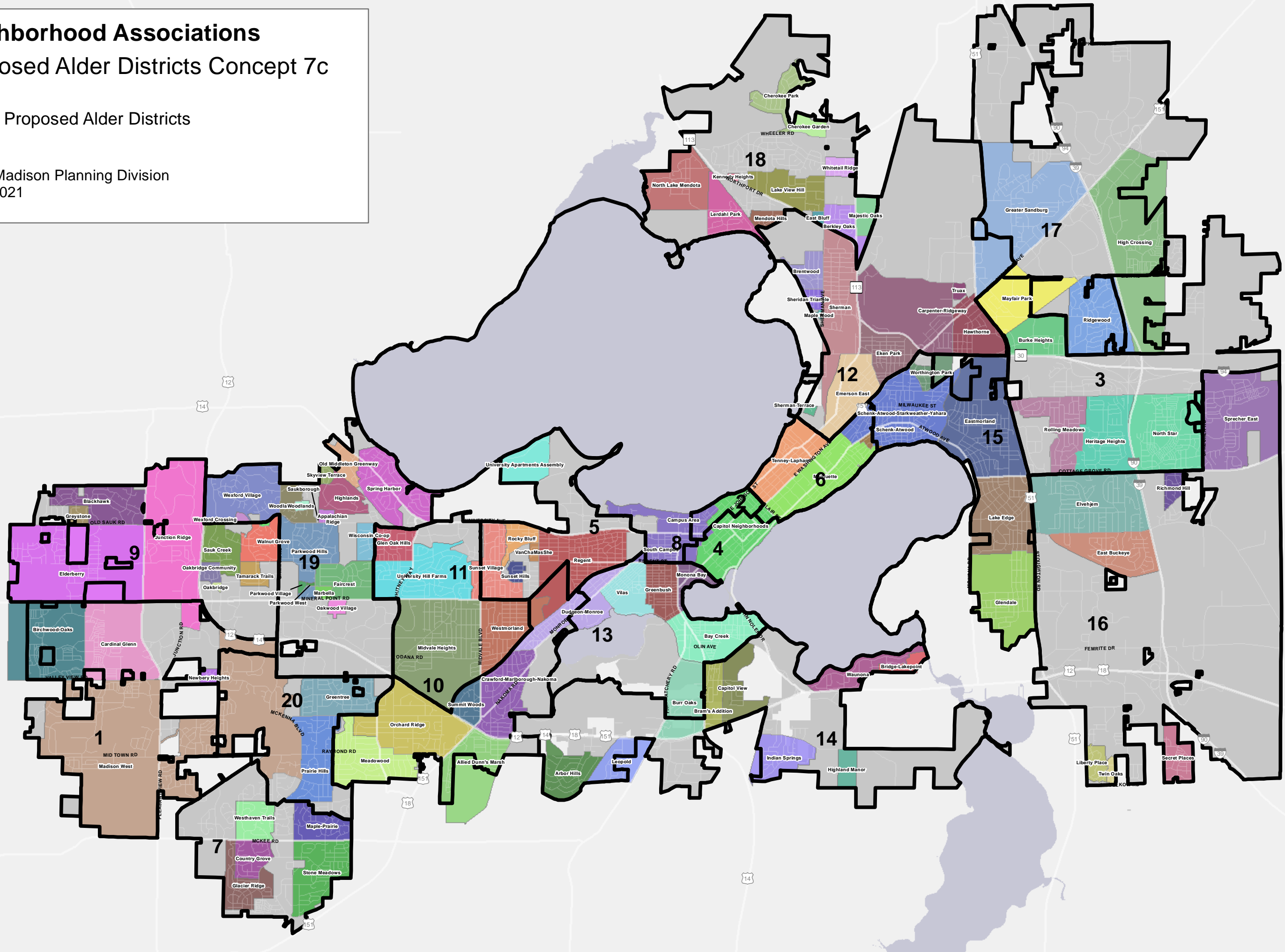


# Neighborhood Associations

## Proposed Alder Districts Concept 7c


 Proposed Alder Districts

City of Madison Planning Division  
Oct 5, 2021

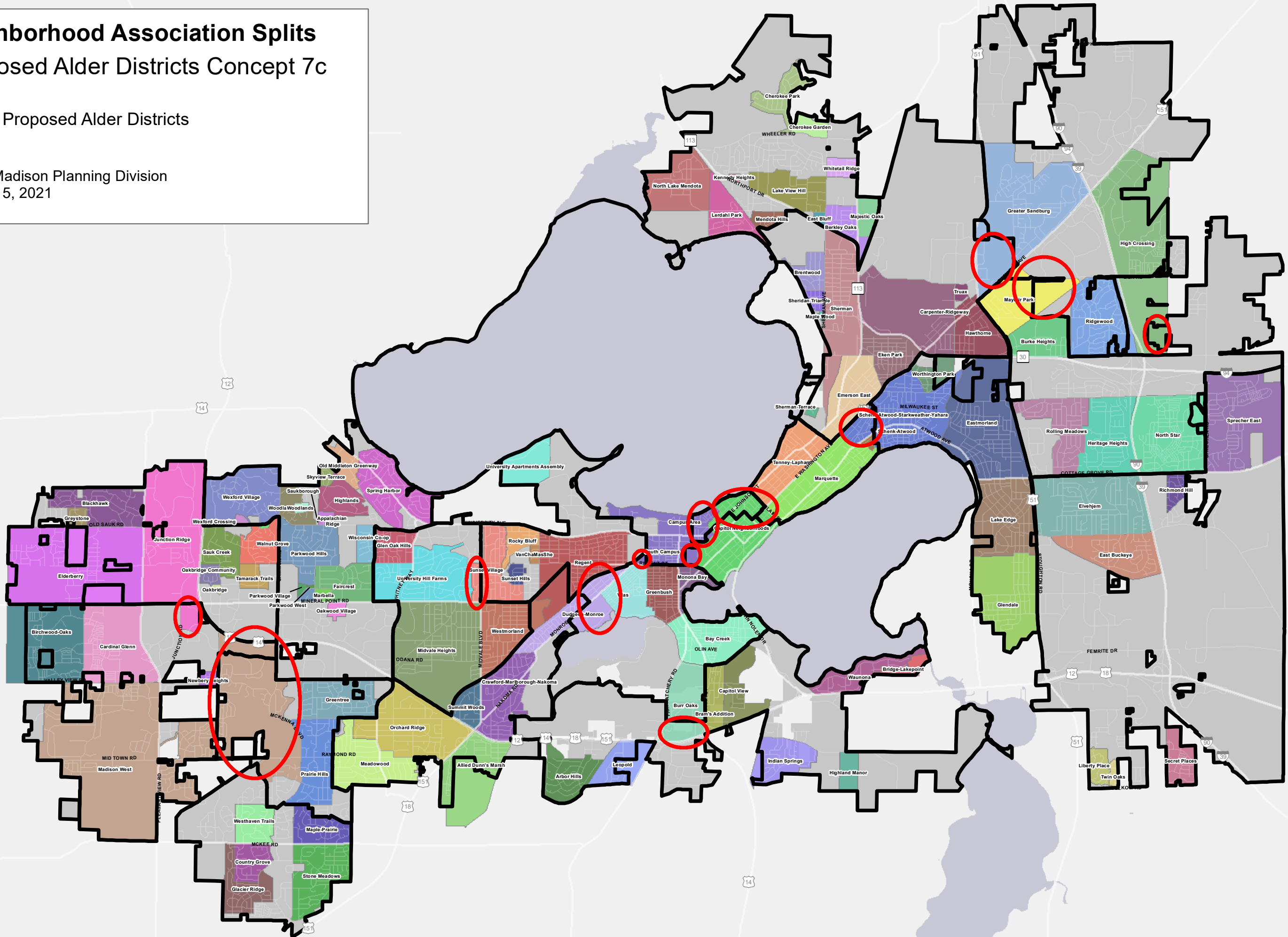


# Neighborhood Association Splits

## Proposed Alder Districts Concept 7c


 Proposed Alder Districts

City of Madison Planning Division  
October 5, 2021

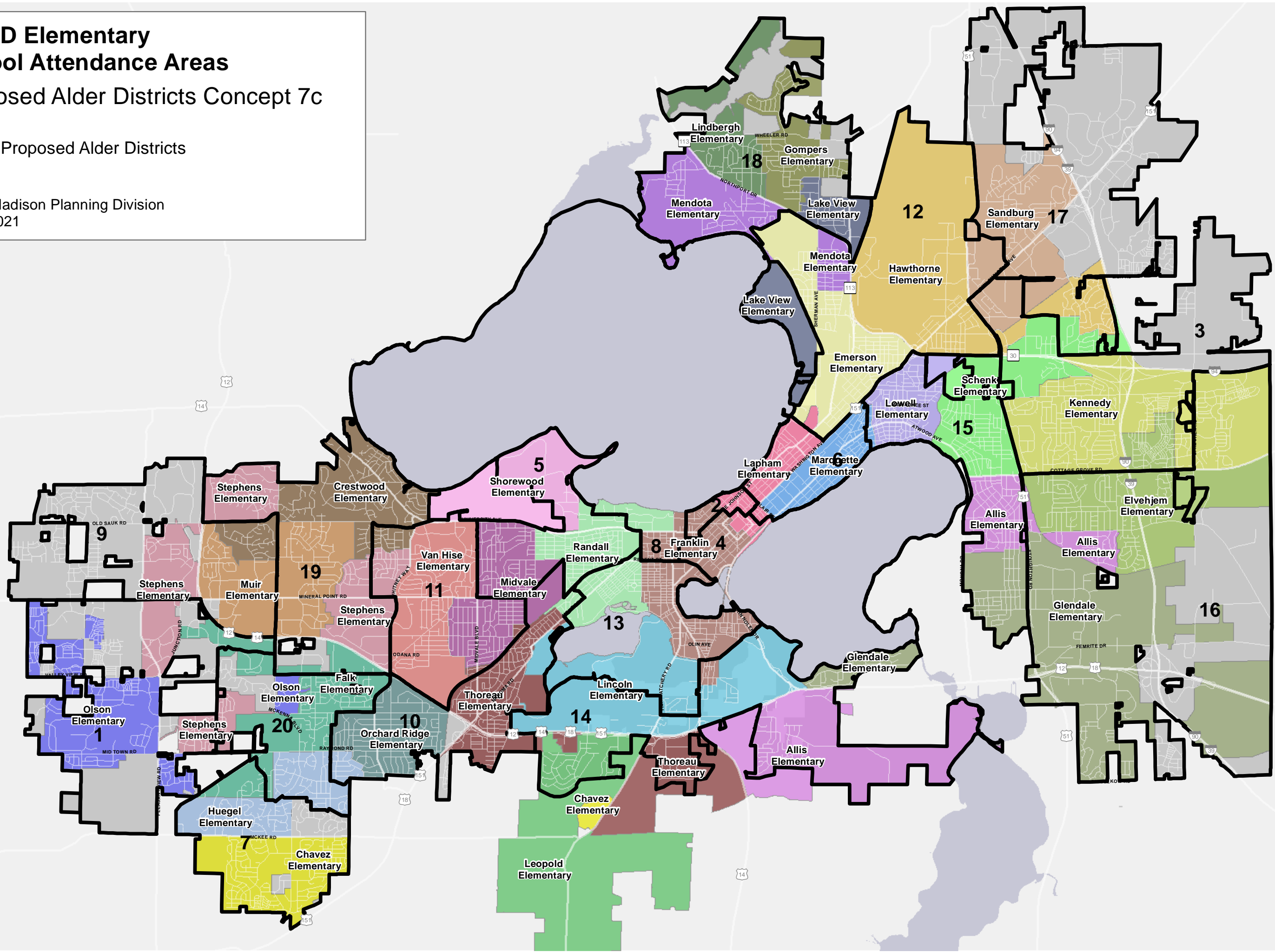


# MMSD Elementary School Attendance Areas

## Proposed Alder Districts Concept 7c

 Proposed Alder Districts

City of Madison Planning Division  
Oct 5, 2021





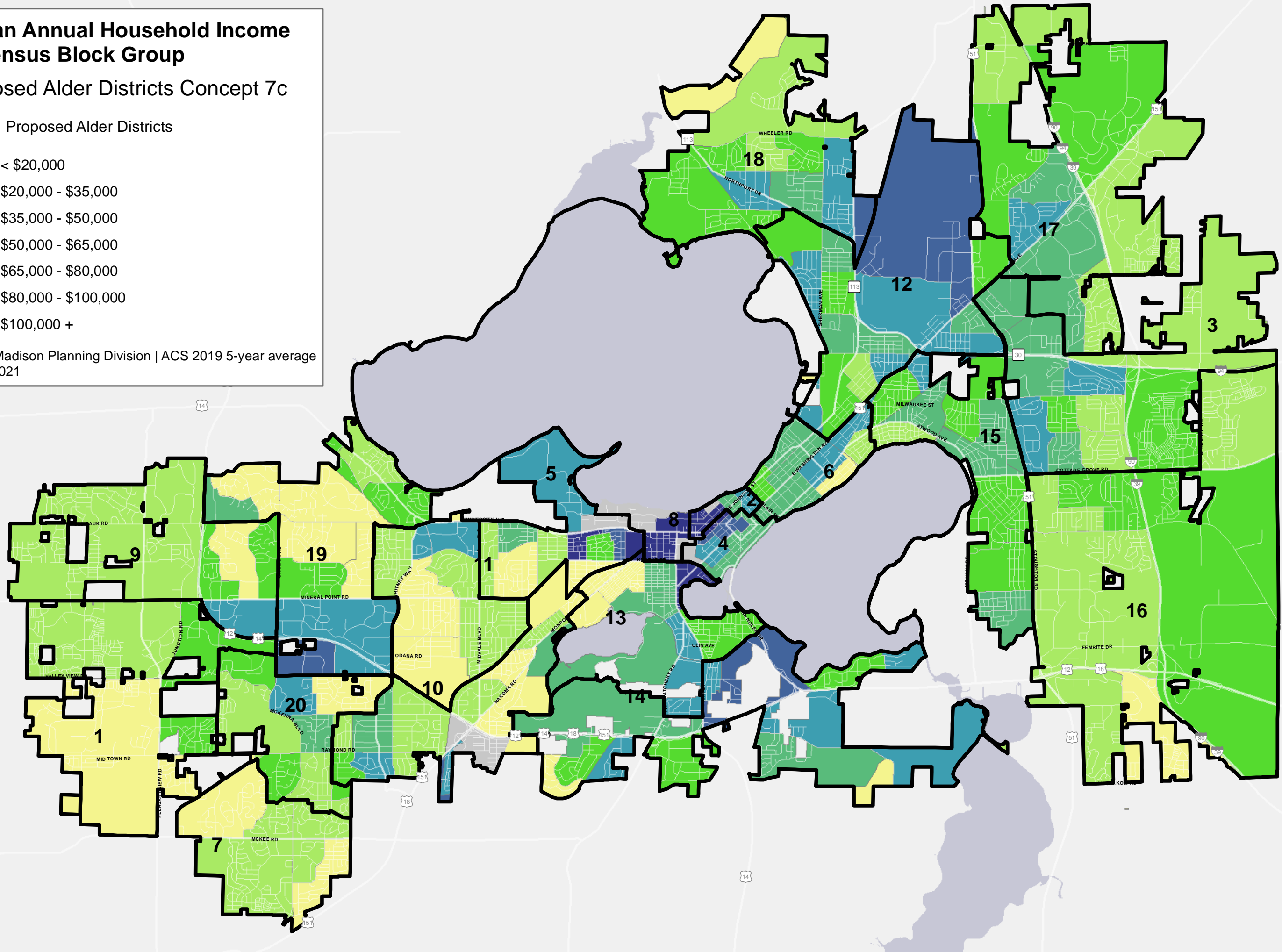
# Median Annual Household Income by Census Block Group

## Proposed Alder Districts Concept 7c

Proposed Alder Districts

- < \$20,000
- \$20,000 - \$35,000
- \$35,000 - \$50,000
- \$50,000 - \$65,000
- \$65,000 - \$80,000
- \$80,000 - \$100,000
- \$100,000 +

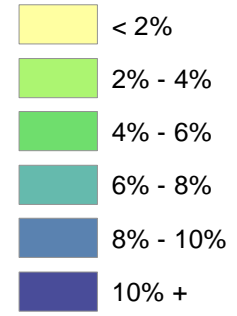
City of Madison Planning Division | ACS 2019 5-year average  
Oct 5, 2021



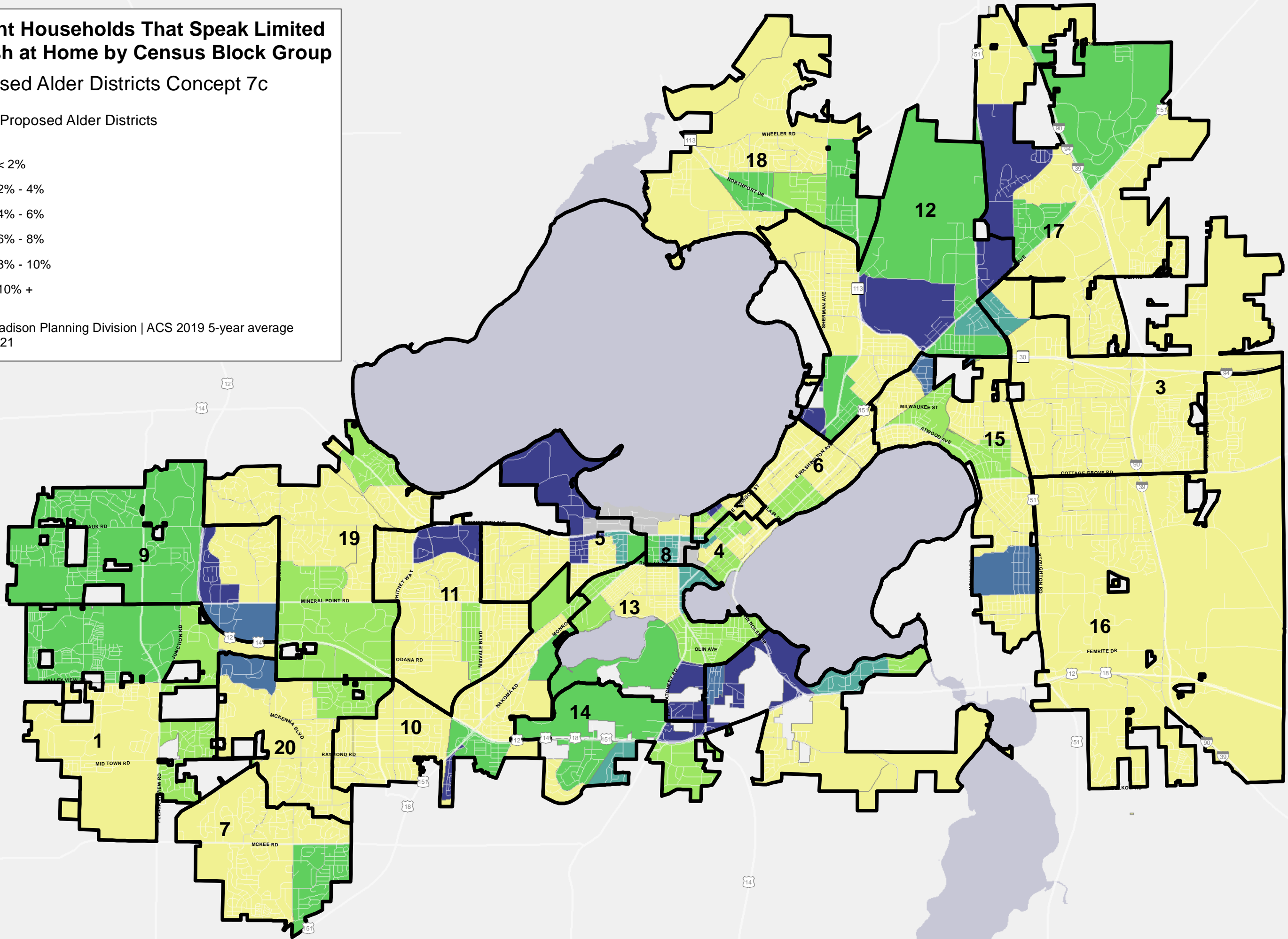
# Percent Households That Speak Limited English at Home by Census Block Group

Proposed Alder Districts Concept 7c

Proposed Alder Districts



City of Madison Planning Division | ACS 2019 5-year average  
Oct 5, 2021

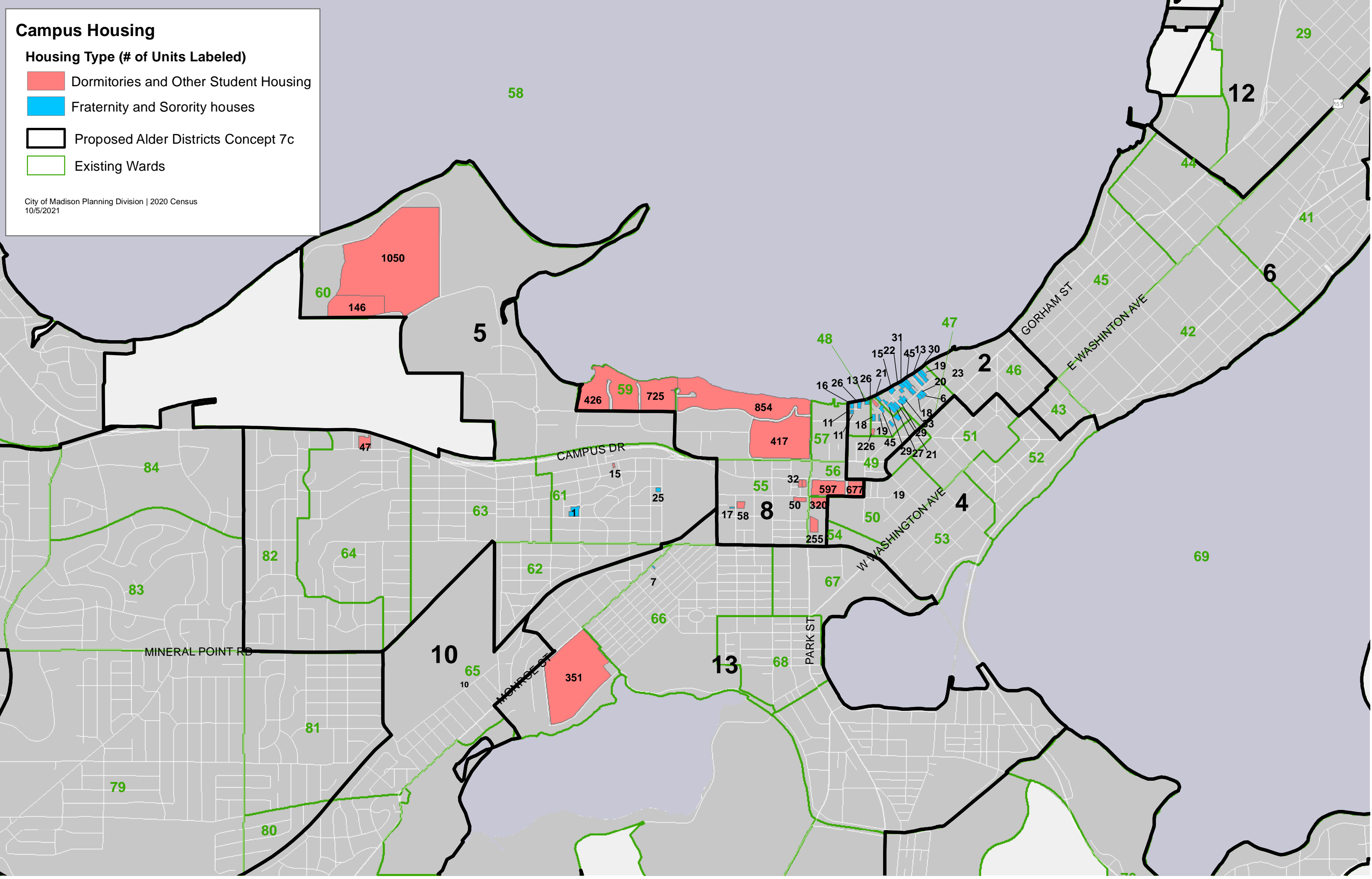


# Campus Housing

## Housing Type (# of Units Labeled)

- Dormitories and Other Student Housing
- Fraternity and Sorority houses
- Proposed Alder Districts Concept 7c
- Existing Wards

City of Madison Planning Division | 2020 Census  
10/5/2021



**2020 Census Redistricting Data - Proposed Alder District** **Concept 7c**  
**With Town of Madison Population Added**

Source: U.S. Census Bureau, 2020 Census Redistricting Data  
 Prepared by: City of Madison Planning Division  
 October 5, 2021

Race	Hispanic Origin	People of Color
------	-----------------	-----------------

Alder District	Total Population (Apr. 1 2020 population, Aug. 1 2021 geography + Town of Madison)	Deviation from 13,739		White (Includes Hispanic White)		Non-White							Hispanic				(Non-White & Hispanic White)		Population 18 or Over		Housing Units				
				#	%	Black	American Indian and Alaska Native	Asian	Native Hawaiian and Other Pacific Islander	Some Other Race	Two or More Races	Sub Total		White Hispanic	Non-White Hispanic	Sub Total		#	%	#	Vacant	Occupied			
		#	%									#	%			#	%					#	%		
1	13,010	-729	-5.6%	9,829	75.5%	352	25	1,836	6	213	749	3,181	24.5%	168	491	659	5.1%	3,349	25.7%	10,889	83.7%	6,580	221	6,359	96.6%
2	14,253	514	3.6%	10,521	73.8%	318	71	2,010	5	306	1,022	3,732	26.2%	351	622	973	6.8%	4,083	28.6%	13,134	92.1%	6,684	342	6,342	94.9%
3	14,362	623	4.3%	9,953	69.3%	1,761	53	671	7	757	1,160	4,409	30.7%	233	1,183	1,416	9.9%	4,642	32.3%	11,454	79.8%	6,350	185	6,165	97.1%
4	13,419	-320	-2.4%	10,129	75.5%	664	26	1,480	26	222	872	3,290	24.5%	301	534	835	6.2%	3,591	26.8%	12,796	95.4%	7,758	387	7,371	95.0%
5	13,164	-575	-4.4%	9,501	72.2%	316	48	2,030	3	252	1,014	3,663	27.8%	160	547	707	5.4%	3,823	29.0%	11,010	83.6%	6,434	340	6,094	94.7%
6	13,604	-135	-1.0%	11,316	83.2%	599	72	471	1	225	920	2,288	16.8%	194	514	708	5.2%	2,482	18.2%	12,434	91.4%	8,015	386	7,629	95.2%
7	13,975	236	1.7%	10,408	74.5%	741	51	1,197	3	486	1,089	3,567	25.5%	262	931	1,193	8.5%	3,829	27.4%	10,982	78.6%	6,074	117	5,957	98.1%
8	14,031	292	2.1%	9,602	68.4%	362	58	2,886	5	225	893	4,429	31.6%	217	469	686	4.9%	4,646	33.1%	13,481	96.1%	2,464	212	2,252	91.4%
9	13,226	-513	-3.9%	8,680	65.6%	828	36	2,522	8	292	860	4,546	34.4%	173	653	826	6.2%	4,719	35.7%	10,405	78.7%	6,433	218	6,215	96.6%
10	13,247	-492	-3.7%	9,373	70.8%	1,141	92	448	4	978	1,211	3,874	29.2%	260	1,623	1,883	14.2%	4,134	31.2%	10,142	76.6%	5,713	166	5,547	97.1%
11	13,554	-185	-1.4%	10,128	74.7%	362	38	1,897	8	240	881	3,426	25.3%	155	520	675	5.0%	3,581	26.4%	11,138	82.2%	6,781	309	6,472	95.4%
12	14,319	580	4.1%	9,812	68.5%	1,883	91	597	6	659	1,271	4,507	31.5%	316	1,088	1,404	9.8%	4,823	33.7%	11,953	83.5%	7,604	305	7,299	96.0%
13	13,495	-244	-1.8%	9,665	71.6%	753	89	1,408	19	484	1,077	3,830	28.4%	188	957	1,145	8.5%	4,018	29.8%	11,615	86.1%	6,481	345	6,136	94.7%
14	14,572	833	5.7%	6,908	47.4%	2,616	154	955	8	2,087	1,844	7,664	52.6%	551	3,285	3,836	26.3%	8,215	56.4%	11,266	77.3%	6,670	259	6,411	96.1%
15	13,853	114	0.8%	11,213	80.9%	826	62	339	5	378	1,030	2,640	19.1%	282	776	1,058	7.6%	2,922	21.1%	11,581	83.6%	6,867	227	6,640	96.7%
16	13,863	124	0.9%	10,707	77.2%	1,020	103	513	1	382	1,137	3,156	22.8%	263	758	1,021	7.4%	3,419	24.7%	10,965	79.1%	5,948	163	5,785	97.3%
17	14,257	518	3.6%	8,892	62.4%	1,510	101	1,533	18	952	1,251	5,365	37.6%	326	1,554	1,880	13.2%	5,691	39.9%	11,632	81.6%	6,956	396	6,560	94.3%
18	14,211	472	3.3%	9,321	65.6%	2,167	85	877	4	630	1,127	4,890	34.4%	267	1,075	1,342	9.4%	5,157	36.3%	11,267	79.3%	6,208	341	5,867	94.5%
19	13,344	-395	-3.0%	10,676	80.0%	497	48	970	6	260	887	2,668	20.0%	160	606	766	5.7%	2,828	21.2%	11,578	86.8%	6,993	352	6,641	95.0%
20	13,029	-710	-5.4%	7,536	57.8%	1,939	79	1,411	15	836	1,213	5,493	42.2%	229	1,495	1,724	13.2%	5,722	43.9%	9,986	76.6%	5,509	164	5,345	97.0%
<b>Totals</b>	<b>274,788</b>	<b>NA</b>	<b>NA</b>	<b>194,170</b>	<b>70.7%</b>	<b>20,655</b>	<b>1,382</b>	<b>26,051</b>	<b>158</b>	<b>10,864</b>	<b>21,508</b>	<b>80,618</b>	<b>29.3%</b>	<b>5,056</b>	<b>19,681</b>	<b>24,737</b>	<b>9.0%</b>	<b>85,674</b>	<b>31.2%</b>	<b>229,708</b>	<b>83.6%</b>	<b>128,522</b>	<b>5,435</b>	<b>123,087</b>	<b>95.8%</b>