

PROJECT:
**CHEROKEE PARK
 PLAYGROUND**

*Cherokee Park
 1000 Burning
 Wood Way
 Madison, WI 53704
 (playground at
 Burning Wood Way
 & Arapahoe Ln)*

Although every effort has been made in preparing these plans and checking them for accuracy, the contractor and subcontractors must check all details and dimensions of their trade and be responsible for the same.

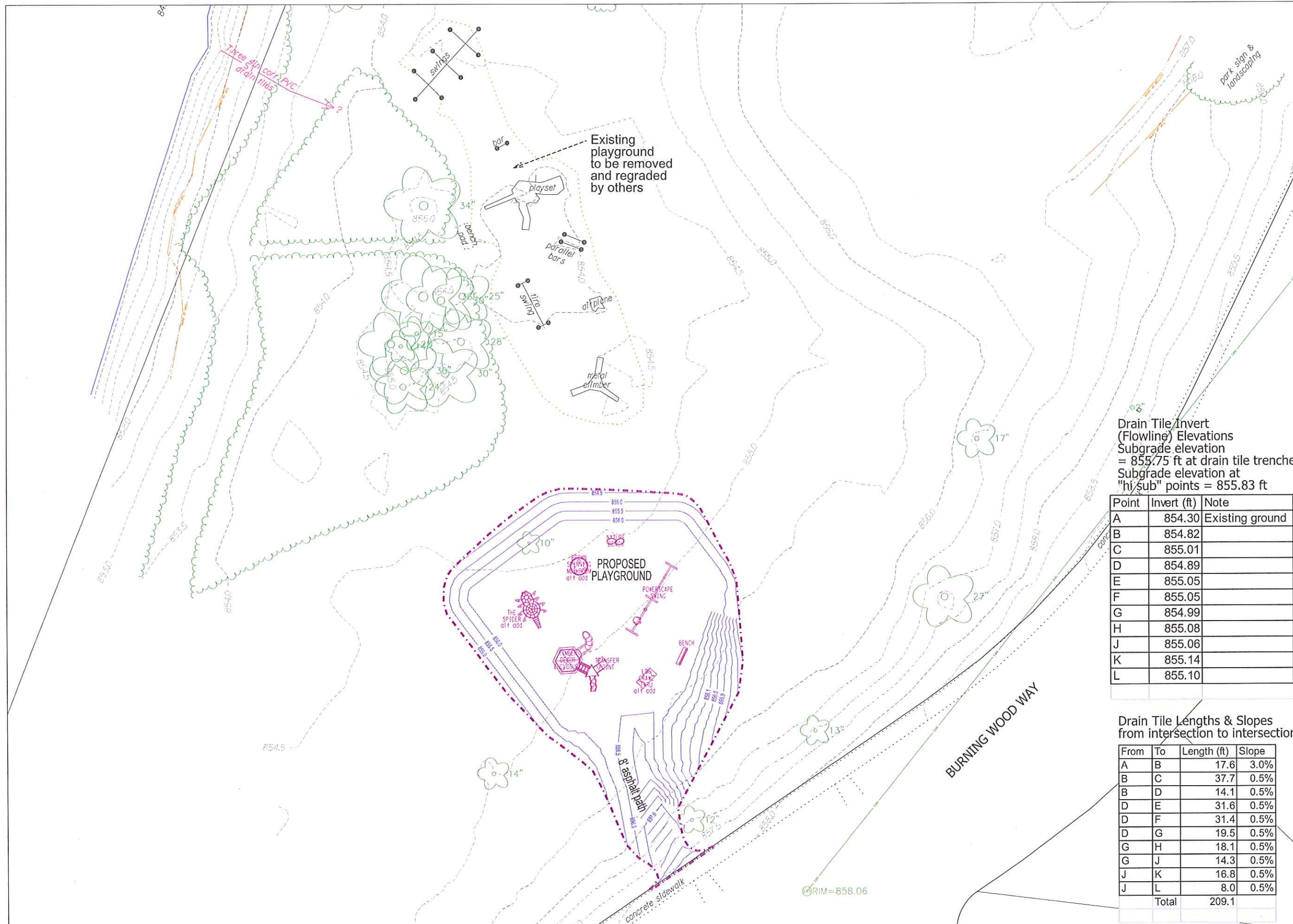
ITEM	DATE
Drawn by: DCR, checked by WAB	09.27.2011
Revised	11.29.2011
Revised	1.30.2012

PUBLIC WORKS PROJECT #:
 53W1404 / Contract #6864

SHEET TITLE:
**PRELIMINARY
 SITE PLAN -
 Option 2**

SHEET NUMBER:

1



Drain Tile Invert
 (Flowline) Elevations
 Subgrade elevation
 = 855.75 ft at drain tile trenches
 Subgrade elevation at
 "hi sub" points = 855.83 ft

Point	Invert (ft)	Note
A	854.30	Existing ground
B	854.82	
C	855.01	
D	854.89	
E	855.05	
F	855.05	
G	854.99	
H	855.08	
J	855.06	
K	855.14	
L	855.10	

Drain Tile Lengths & Slopes
 from intersection to intersection

From	To	Length (ft)	Slope
A	B	17.6	3.0%
B	C	37.7	0.5%
B	D	14.1	0.5%
D	E	31.6	0.5%
D	F	31.4	0.5%
D	G	19.5	0.5%
G	H	18.1	0.5%
G	J	14.3	0.5%
J	K	16.8	0.5%
J	L	8.0	0.5%
Total		209.1	