

BLOCKS 19 AND 20 AND OUTLOT 3, FAIR OAKS; AND OUTLOT D, CLYDE A. GALLAGHER'S SUBDIVISION OF PART OF OUTLOTS 106, 107, AND 108, FARWELL'S ADDITION TO MADISON; ALSO VACATED ST. PAUL AVENUE, VACATED OAKWOOD AVENUE AND VACATED EAST AVENUE; AND PART OF THE NORTHWEST QUARTER OF THE SOUTHWEST QUARTER OF SECTION 05, TOWNSHIP 07 NORTH, RANGE 10 EAST, CITY OF MADISON, DANE COUNTY, WISCONSIN.

Found monument stem 0 80 160 240

(cap broken off) at Meander corner for

West 1/4-Corner Section 05, T07N R10E

S89°59'46"E 5335.93' (5336.09')

SCALE : ONE INCH = EIGHTY FEET

Found monument stem (cap broken off) at East 1/4-Corner Section 05, T07N R10E

WCCS-Dane NAD83(91) Coordinates per Feb 16, 2004 tie sheets by Carl Sandnes:

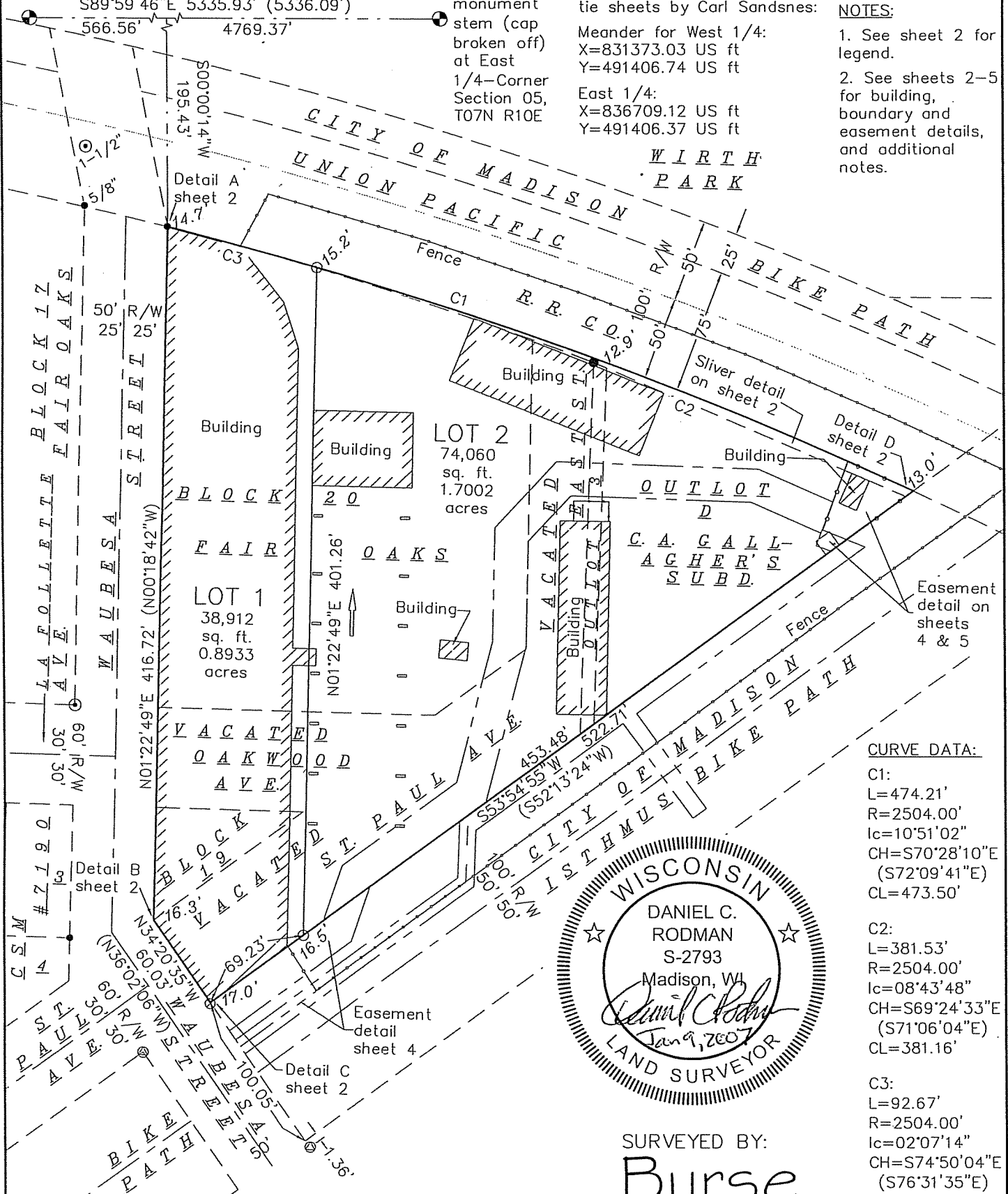
Meander for West 1/4:
X=831373.03 US ft
Y=491406.74 US ft

East 1/4:
X=836709.12 US ft
Y=491406.37 US ft

NOTES:

1. See sheet 2 for legend.
2. See sheets 2-5 for building, boundary and easement details, and additional notes.

GRID NORT
 WISCONSIN COUNTY
 COORDINATE SYSTEM, D
 ZONE, NAD83(91) DATU
 PER CITY OF MADISON



SURVEYED BY:

Burse

surveying & engineering INC

1400 E. Washington Ave, Suite 158
Madison, WI 53703 CO# 250.8262

MAP NO. _____

DOCUMENT NO. _____

SURVEYED FOR:
Kupfer Center, LLC