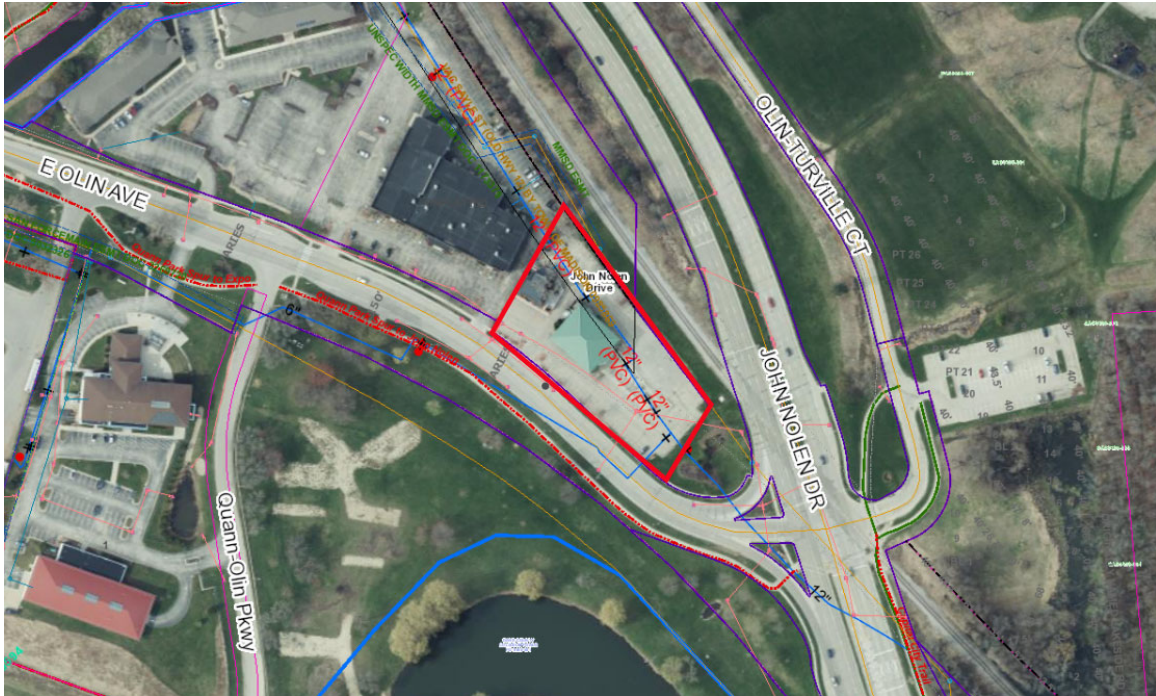
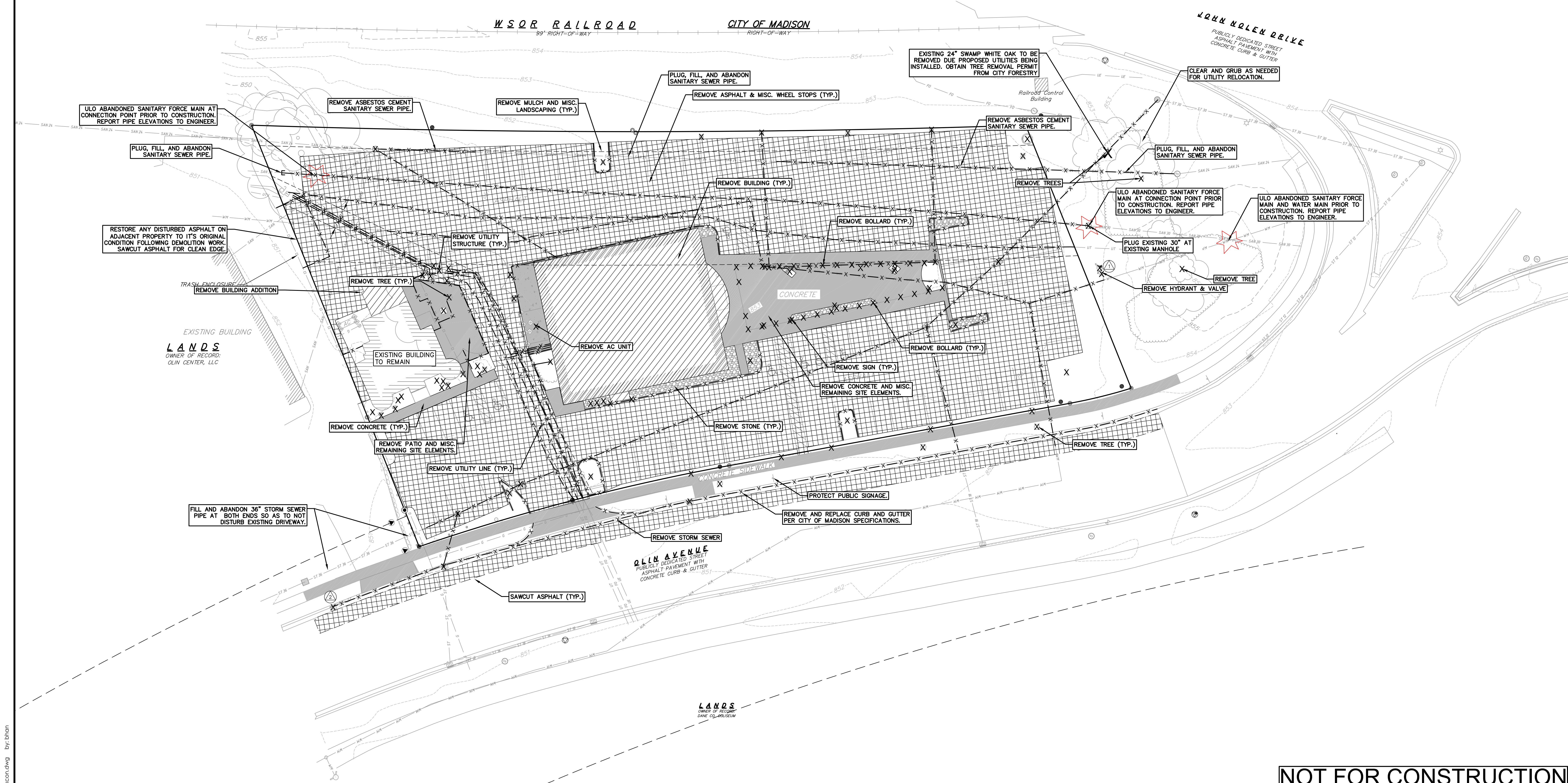


250 E Olin Avenue
Contract 9054
MUNIS 13684
Developer: 250 E. Olin, LLC



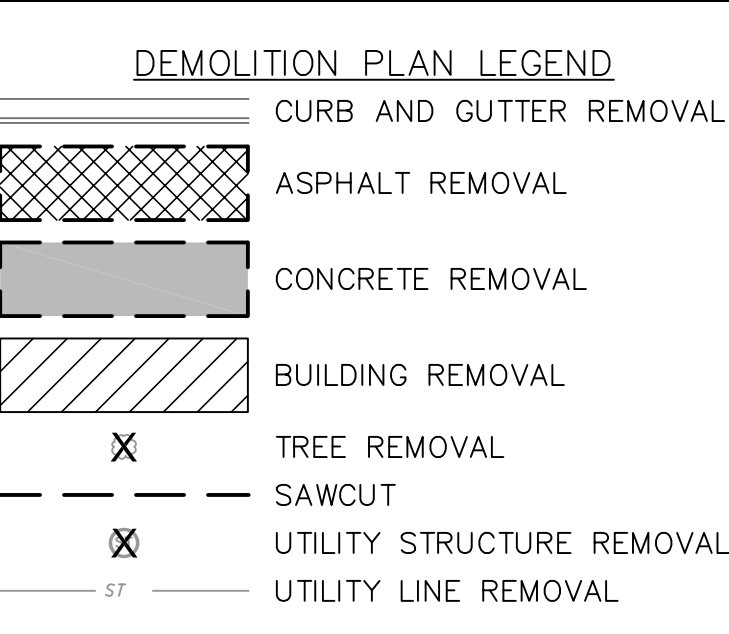
Summary of Improvements:

- Dedicate easements for utility relocations, release existing easement, complete & record the required Certified Survey Map
- Relocate the existing Madison Metropolitan Sewerage District (MMSD) sewer facilities. This will be completed under a separate agreement between the Developer and MMSD.
- Relocate existing public storm sewer and water main
- Install private sanitary, storm, and water service laterals
- Repair or replace existing public sidewalk, terrace, curb & gutter, and pavement as needed
- Install private driveway aprons
- Dedicate easement and construct 10' path stub at north corner of the development (to connect to future path that will continue north-northwest)
- Provide \$40,000 deposit for pedestrian improvements on John Nolen Drive (improvements to be completed with future City project)

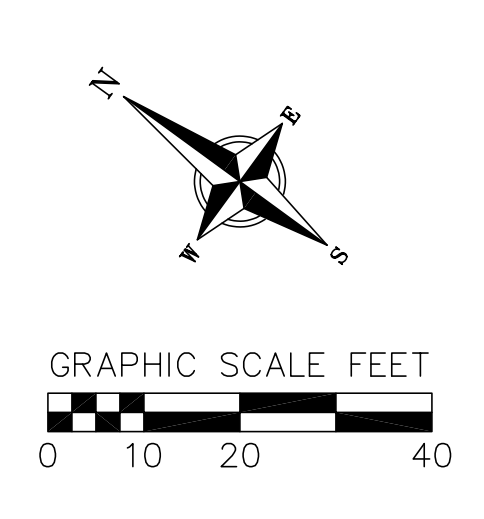


- DEMOLITION/EROSION CONTROL NOTES:**
- CONTRACTOR SHALL KEEP ALL CITY STREETS FREE AND CLEAR OF CONSTRUCTION RELATED DIRT/DUST/DEBRIS.
 - COORDINATE EXISTING UTILITY REMOVAL/ABANDONMENT WITH LOCAL AUTHORITIES AND UTILITY COMPANIES HAVING JURISDICTION.
 - ALL SAWCUTTING SHALL BE FULL DEPTH TO PROVIDE A CLEAN EDGE TO MATCH NEW CONSTRUCTION. MATCH EXISTING ELEVATIONS AT POINTS OF CONNECTION FOR NEW AND EXISTING PAVEMENT, CURB, SIDEWALKS, ETC. ALL SAWCUT LOCATIONS SHOWN ARE APPROXIMATE AND MAY BE FIELD ADJUSTED TO ACCOMMODATE CONDITIONS, JOINTS, MATERIAL TYPE, ETC. REMOVE MINIMUM AMOUNT NECESSARY FOR INSTALLATION OF PROPOSED IMPROVEMENTS.
 - CONTRACTOR SHALL PROVIDE AND SHALL BE RESPONSIBLE FOR ANY NECESSARY TRAFFIC CONTROL SIGNAGE AND SAFETY MEASURES DURING DEMOLITION AND CONSTRUCTION OPERATIONS WITHIN OR NEAR THE PUBLIC ROADWAY.
 - COORDINATE TREE REMOVAL WITH LANDSCAPE ARCHITECT. ALL TREES TO BE REMOVED SHALL BE REMOVED IN THEIR ENTIRETY AND STUMPS SHALL BE GROUND TO 12" BELOW PROPOSED SUBGRADE.
 - IF APPLICABLE, PROVIDE TREE PROTECTION FENCING PRIOR TO CONSTRUCTION OPERATIONS. MAINTAIN THROUGHOUT CONSTRUCTION.
 - ALL LIGHT POLES TO BE REMOVED FROM PRIVATE PROPERTY SHALL BE REMOVED IN THEIR ENTIRETY, INCLUDING BASE AND ALL APPURTENANCES. COORDINATE ABANDONMENT OF ELECTRICAL LINES WITH ELECTRICAL ENGINEER AND OWNER PRIOR TO DEMOLITION.
 - CONTRACTOR SHALL CLOSE ALL ABANDONED DRIVEWAYS BY REPLACING THE CURB IN FRONT OF THE DRIVEWAYS AND RESTORING THE TERRACE WITH GRASS.
 - CONTRACTOR SHALL OBTAIN ANY NECESSARY DEMOLITION AND UTILITY PLUGGING PERMITS.

- THE LOCATION OF EXISTING UNDERGROUND UTILITIES AS SHOWN ON THE PLANS HAS BEEN DETERMINED FROM THE BEST AVAILABLE INFORMATION AND IS GIVEN FOR THE CONVENIENCE OF THE CONTRACTOR. THE OWNER AND THE ENGINEER DO NOT ASSUME RESPONSIBILITY IN THE EVENT THAT DURING CONSTRUCTION, UTILITIES OTHER THAN THOSE SHOWN MAY BE ENCOUNTERED, AND THAT THE ACTUAL LOCATION OF THOSE WHICH ARE SHOWN MAY BE DIFFERENT FROM THE LOCATION AS SHOWN ON THE PLANS.
- ANY DAMAGE TO THE CITY PAVEMENT, INCLUDING DAMAGE RESULTING FROM CURB REPLACEMENT, WILL REQUIRE RESTORATION IN ACCORDANCE WITH THE CITY ENGINEERING PATCHING CRITERIA.
- CONTRACTOR SHALL TAKE PRECAUTIONS DURING CONSTRUCTION TO NOT DISFIGURE, SCAR, OR IMPAIR THE HEALTH OF ANY STREET TREE. CONTRACTOR SHALL OPERATE EQUIPMENT IN A MANNER AS TO NOT DAMAGE THE BRANCHES OF THE STREET TREE(S). THIS MAY REQUIRE SMALLER EQUIPMENT AND LOADING AND UNLOADING MATERIALS IN A DESIGNATED SPACE AWAY FROM THE TREES ON THE CONSTRUCTION SITE. ANY DAMAGE OR INJURY TO EXISTING STREET TREES (EITHER ABOVE OR BELOW GROUND) SHALL BE REPORTED IMMEDIATELY TO CITY FORESTRY AT (608) 266-4816. PENALTIES AND REMEDIATION SHALL BE REQUIRED.
- AS DEFINED BY THE SECTION 107.13 OF CITY OF MADISON STANDARD SPECIFICATIONS FOR PUBLIC WORKS CONSTRUCTION: NO EXCAVATION IS PERMITTED WITHIN 5 FEET OF THE TRUNK OF THE STREET TREE OR WHEN CUTTING ROOTS OVER 3 INCHES IN DIAMETER. IF EXCAVATION IS NECESSARY, THE CONTRACTOR SHALL CONTACT MADISON CITY FORESTRY AT (608) 266-4816 PRIOR TO EXCAVATION. CITY OF MADISON FORESTRY PERSONNEL SHALL ASSESS THE IMPACT TO THE TREE AND TO ITS ROOT SYSTEM PRIOR TO WORK COMMENCING. TREE PROTECTION AND SPECIFICATIONS CAN BE FOUND ON THE FOLLOWING WEBSITE: <https://www.cityofmadison.com/business/pw/specs.ctm>.
- ALL WORK WITHIN THE CITY RIGHT-OF-WAY AND ALL PUBLIC IMPROVEMENTS TO SERVE THE PROJECT SHALL BE COMPLETED PER THE CITY OF MADISON ISSUED PLANS (CONTRACT XXXXX, PROJECT XXXXX).
- THE RIGHT-OF-WAY IS THE SOLE JURISDICTION OF THE CITY OF MADISON AND IS SUBJECT TO CHANGE AT ANY TIME PER THE RECOMMENDATION/PLAN OF TRAFFIC ENGINEERING AND CITY ENGINEERING DIVISIONS.



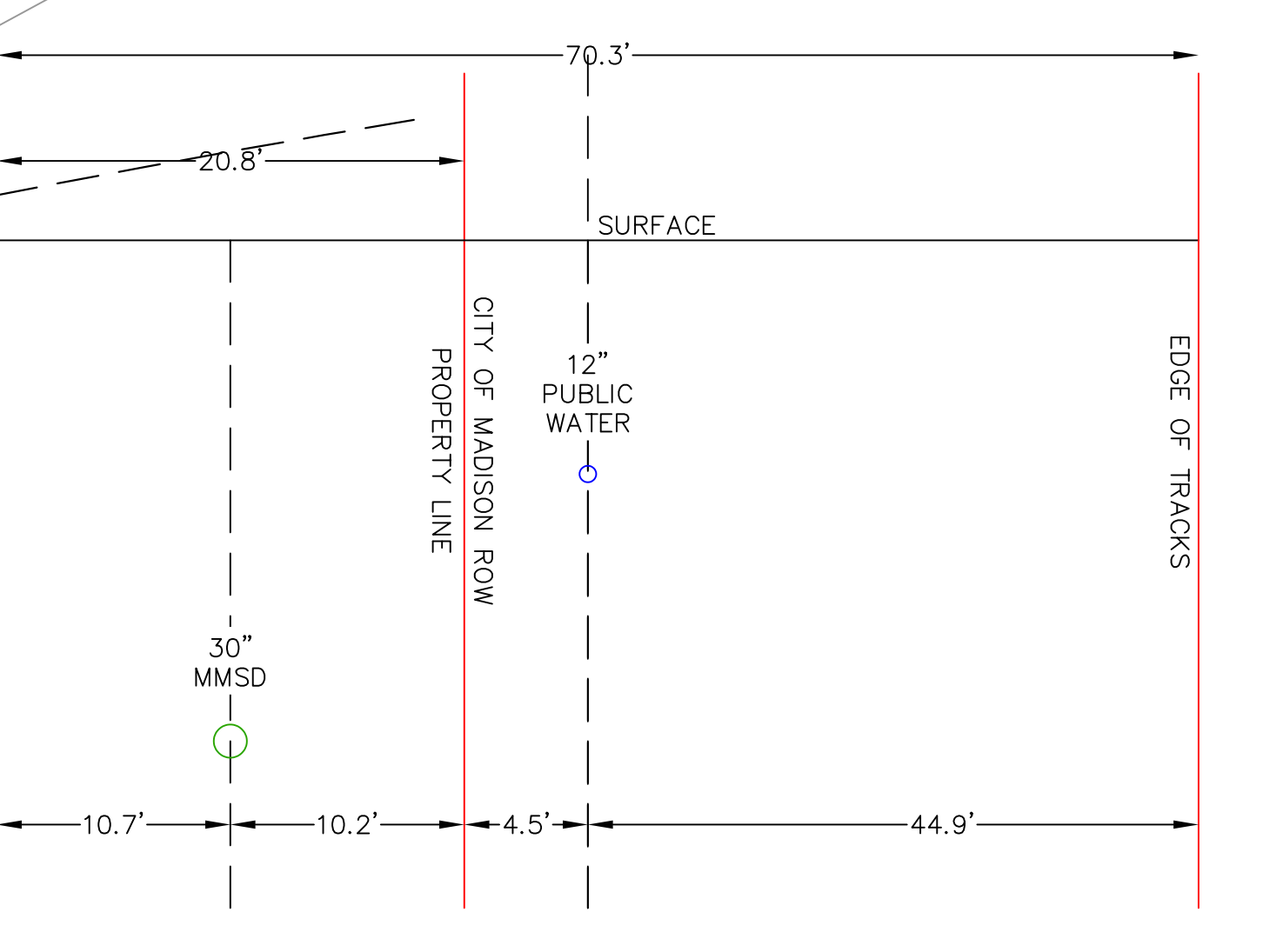
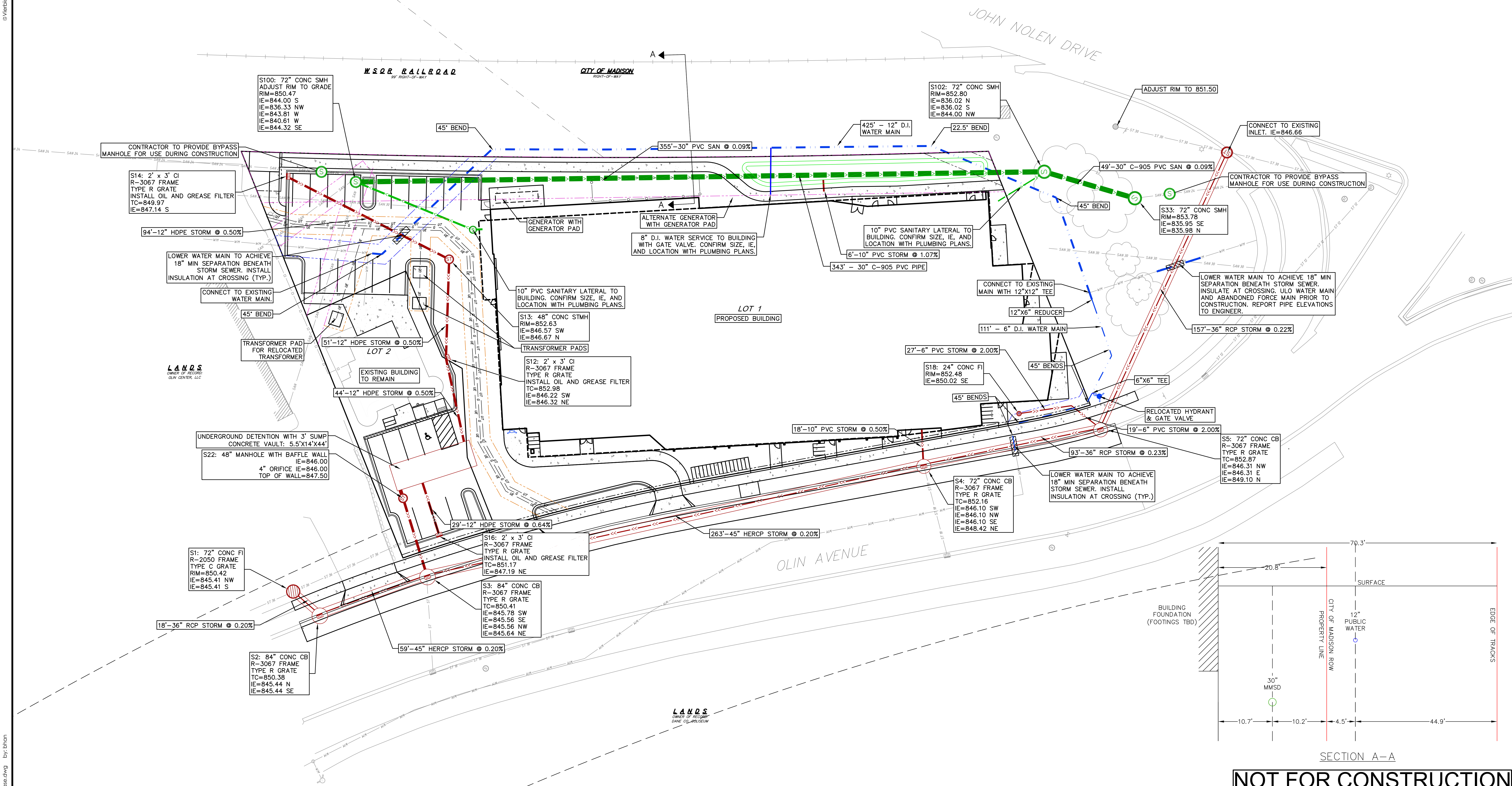
NOT FOR CONSTRUCTION



DEMOLITION PLAN
250 E. OLIN AVENUE
CITY OF MADISON
DANE COUNTY, WISCONSIN

REV. NO.	DATE	REVISIONS

DATE: 07/17/2023
DRAFTER: JGOL
CHECKED: CLAN/TSCH
PROJECT NO.: 210063
C200



NOT FOR CONSTRUCTION

- UTILITY NOTES:**
- CONTRACTOR TO VERIFY EXISTING UTILITY LOCATIONS AND ELEVATIONS PRIOR TO STARTING WORK.
 - SANITARY & STORM SEWER LENGTHS SHOWN ARE FROM CENTER OF STRUCTURE TO CENTER OF STRUCTURE. STORM SEWER END SECTIONS ARE INCLUDED IN THE LENGTH AND SLOPE OF THE PIPE.
 - CONTRACTOR SHALL INVESTIGATE ALL UTILITY CROSSINGS PRIOR TO CONSTRUCTION AND NOTIFY ENGINEER OF ANY CONFLICTS.
 - CONTRACTOR SHALL BE RESPONSIBLE FOR ADJUSTING ALL UTILITY STRUCTURES TO FINISHED GRADE (MANHOLE RIMS, WATER VALVES, AND CURB STOPS), IF NECESSARY.
 - FOR ALL SEWER AND WATER MAIN CROSSINGS: PROVIDE MINIMUM 18" SEPARATION WHEN WATER MAIN CROSSES BELOW SEWER AND MINIMUM 6" SEPARATION WHEN WATER MAIN CROSSES ABOVE SEWER.
 - IF DEWATERING OPERATIONS EXCEED 70 GALLONS PER MINUTE OF PUMPING CAPACITY, A DEWATERING WELL PERMIT SHALL BE OBTAINED PRIOR TO STARTING ANY DEWATERING ACTIVITIES.
 - A COPY OF THE APPROVED UTILITY PLANS, SPECIFICATIONS AND PLUMBING PERMIT APPROVAL LETTER SHALL BE ON-SITE DURING CONSTRUCTION AND OPEN TO INSPECTION BY AUTHORIZED REPRESENTATIVES OF THE DEPARTMENT OF SAFETY AND PROFESSIONAL SERVICES AND OTHER LOCAL INSPECTORS.
 - PROPOSED UTILITY SERVICE LINES SHOWN ARE APPROXIMATE. COORDINATE THE EXACT LOCATIONS WITH THE PLUMBING DRAWINGS. COORDINATE THE LOCATION WITH THE PLUMBING CONTRACTOR AND/OR OWNER'S CONSTRUCTION REPRESENTATIVE PRIOR TO INSTALLATION OF ANY NEW UTILITIES.
 - STORM BUILDING SEWER PIPE SHALL CONFORM TO ONE OF THE STANDARDS LISTED IN TABLE 384.30-6 OF SPS 384.30(3)(C).
 - UNDERGROUND DRAIN AND VENT PIPE/TUBING SHALL CONFORM TO ONE OF THE STANDARDS LISTED IN TABLE 384.30-2 OF SPS 384.30(2).

- PRIVATE WATER SERVICES AND PRIVATE WATER MAINS SHALL CONFORM TO ONE OF THE STANDARDS LISTED IN TABLE 384.30-7 OF SPS 384.30(4)(D).
- PRIVATE SANITARY SEWER AND LATERALS SHALL BE POLYVINYL CHLORIDE (PVC) ASTM D3034 - SDR 35 OR APPROVED EQUAL MATERIAL THAT CONFORMS TO ONE OF THE STANDARDS LISTED IN TABLE 384.30-3 OF SPS 384.30(2)(C).
- A MEANS TO LOCATE BURIED UNDERGROUND EXTERIOR NON METALLIC SEWERS/MAINS AND WATER SERVICES/MAINS MUST BE PROVIDED WITH TRACER WIRE OR OTHER METHODS IN ORDER TO BE LOCATED PER SPS 382.10(11)(H) AND SPS 382.40(8)(K).
- EXTERIOR WATER SUPPLY PIPING SETBACKS AND CROSSINGS SHALL BE IN ACCORDANCE WITH SPS 382.40(8)(B).
- NO PERSON MAY ENGAGE IN PLUMBING WORK IN THE STATE UNLESS LICENSED TO DO SO BY THE DEPARTMENT OF SAFETY AND PROFESSIONAL SERVICES PER S.145.06.
- SITE CONTRACTOR SHALL LEAVE SANITARY AND WATER LATERALS FIVE (5) FEET SHORT (HORIZONTALLY) FROM THE BUILDING. BUILDING PLUMBER SHALL VERIFY SIZE, LOCATION, AND INVERT ELEVATION OF PROPOSED SANITARY AND WATER LATERALS.
- IT IS THE CONTRACTOR'S RESPONSIBILITY TO VERIFY THAT THE EXISTING VALVES WILL HOLD THE PRESSURE TEST PRIOR TO CONNECTION. THE LOCAL MUNICIPALITY IS NOT RESPONSIBLE FOR ANY COSTS INCURRED DUE TO THE CONTRACTOR NOT VERIFYING THAT THE EXISTING VALVE WILL HOLD THE PRESSURE TEST PRIOR TO CONNECTION. IF A NEW VALVE IS REQUIRED, THE APPLICANT WILL BE REQUIRED TO INSTALL ONE AT THEIR EXPENSE, AT THE POINT OF CONNECTION.
- CONTRACTOR TO CHLORINATE AND BACTERIA TEST BEFORE DOMESTIC SUPPLY PURPOSES
- CLEAN OUT ALL EXISTING AND PROPOSED STORM INLETS AND CATCH BASINS AT THE COMPLETION OF CONSTRUCTION.

- CONTRACTOR SHALL COORDINATE WITH DRY UTILITY COMPANY'S REGARDING ANY POTENTIAL CONFLICTS AND COORDINATE RELOCATIONS AS MAY BE REQUIRED. CONTRACTOR SHALL ALSO COORDINATE THE PROPOSED INSTALLATION OF NEW FACILITIES AS REQUIRED.
- ALL WATER MAIN AND SERVICES SHALL BE INSTALLED AT A MINIMUM DEPTH OF 6.5' FROM TOP OF FINISHED GRADE ELEVATION TO TOP OF MAIN. PROVIDE 1.5' CLEAR SEPARATION IF WATER CROSSES BELOW SEWER AND MINIMUM 0.5' IF WATER CROSSES ABOVE.
- SANITARY MANHOLES WITH SEWER MAIN CONNECTIONS GREATER THAN 2' ABOVE THE LOWEST INVERT SHALL BE CONSTRUCTED WITH AN EXTERNAL DROP. MANHOLES WITH SEWER LATERAL CONNECTIONS GREATER THAN 2' ABOVE THE LOWEST INVERT SHALL BE CONSTRUCTED WITH AN INTERNAL DROP.
- INSTALL 1 SHEET OF 4'X8'X4" HIGH DENSITY STYROFOAM INSULATION AT ALL LOCATIONS WHERE STORM SEWER CROSSES WATER MAIN OR WATER LATERALS.
- CONTRACTOR TO INSTALL BENDS AND CLEANOUTS AS NECESSARY ON WATER AND SEWER LATERALS.
- CONTRACTOR SHALL TAKE PRECAUTIONS DURING CONSTRUCTION TO NOT DISFIGURE, SCAR, OR IMPAIR THE HEALTH OF ANY STREET TREE. CONTRACTOR SHALL OPERATE EQUIPMENT IN A MANNER AS TO NOT DAMAGE THE BRANCHES OF THE STREET TREE(S). THIS MAY REQUIRE SMALLER EQUIPMENT AND LOADING AND UNLOADING MATERIALS IN A DESIGNATED SPACE AWAY FROM THE TREES ON THE CONSTRUCTION SITE. ANY DAMAGE OR INJURY TO EXISTING STREET TREES (EITHER ABOVE OR BELOW GROUND) SHALL BE REPORTED IMMEDIATELY TO CITY FORESTRY AT (608) 266-4816. PENALTIES AND REMEDIATION SHALL BE REQUIRED.
- AS DEFINED BY THE SECTION 107.13 OF CITY OF MADISON STANDARD SPECIFICATIONS FOR PUBLIC WORKS CONSTRUCTION: NO EXCAVATION IS PERMITTED WITHIN 5 FEET OF THE TRUNK OF THE STREET TREE OR WHEN CUTTING ROOTS OVER 3 INCHES IN DIAMETER. IF EXCAVATION IS NECESSARY, THE CONTRACTOR SHALL CONTACT MADISON CITY FORESTRY AT (608) 266-4816 PRIOR TO EXCAVATION. CITY OF MADISON FORESTRY PERSONNEL SHALL ASSESS THE IMPACT TO THE TREE AND TO ITS ROOT SYSTEM PRIOR TO WORK COMMENCING. TREE PROTECTION AND SPECIFICATIONS CAN BE FOUND ON THE FOLLOWING WEBSITE: [HTTPS://WWW.CITYOFMADISON.COM/BUSINESS/PW/SPECS.CFM](https://www.cityofmadison.com/business/pw/specs.cfm).

PROPOSED UTILITY LEGEND

- Storm Sewer Pipe
- Storm Sewer Manhole
- Storm Sewer Curb Inlet w/Manhole
- Storm Sewer Field Inlet
- Roof Drain Cleanout
- Sanitary Sewer Pipe (Gravity)
- Sanitary Sewer Lateral Pipe
- Sanitary Sewer Manhole
- Sanitary Sewer Cleanout
- Water Main
- Water Service Lateral Pipe
- Fire Hydrant
- Water Valve
- Fire Department Connection
- Proposed Pipe Insulation
- Gas Main
- Electric Service
- Telephone Service
- Conduit

ABBREVIATIONS

- STMH - STORM MANHOLE
- FI - FIELD INLET
- CI - CURB INLET
- CB - CATCH BASIN
- EW - ENDWALL
- SMH - SANITARY MANHOLE

REVISIONS

NO.	DATE	REMARKS

DATE: 07/17/2023
 DRAFTER: JGOL
 CHECKED: CLAN/TSCW
 PROJECT NO.: 210063

C500

UTILITY PLAN
250 E. OLIN AVENUE
CITY OF MADISON
DANE COUNTY, WISCONSIN

DATE: 07/17/2023
DRAFTER: JGOL
CHECKED: CLAN/TSCW
PROJECT NO.: 210063
C500

