

Bicycle and Pedestrian Element

- Ahead of rest of Madison In Motion Plan
- Uncertain of How Included in Plan Document
- Goals and Policies from Madison Comprehensive Plan
- Project Priorities – to occur as rest of plan is developed
- Like to hear of broad concerns – do not worry about wordsmithing changes

Early Comments

- Goals and policies?
- What about sustainability and how that ties into this plan?
- How much detail do we go into?
- Where are the other E's?
- Madison is covered by a recently approved and comprehensive MPO bike plan (not pedestrian)

Sections of Element

- Intro
- Discussion of Existing Bicycle and Pedestrian Networks – existing conditions
- Trends including challenges
- Plan recommendations by bicycle and pedestrian

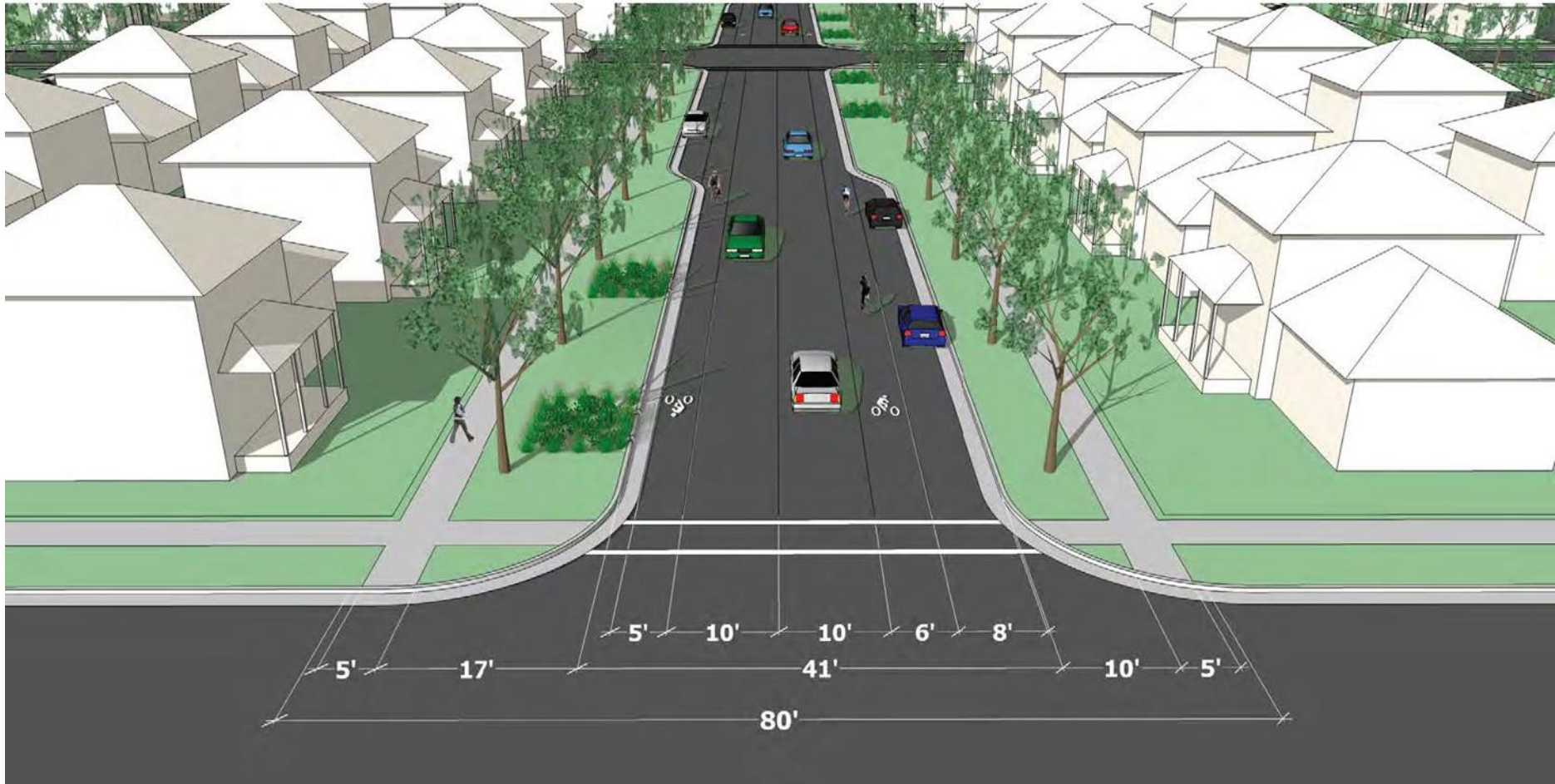


Street Typologies - Local Street

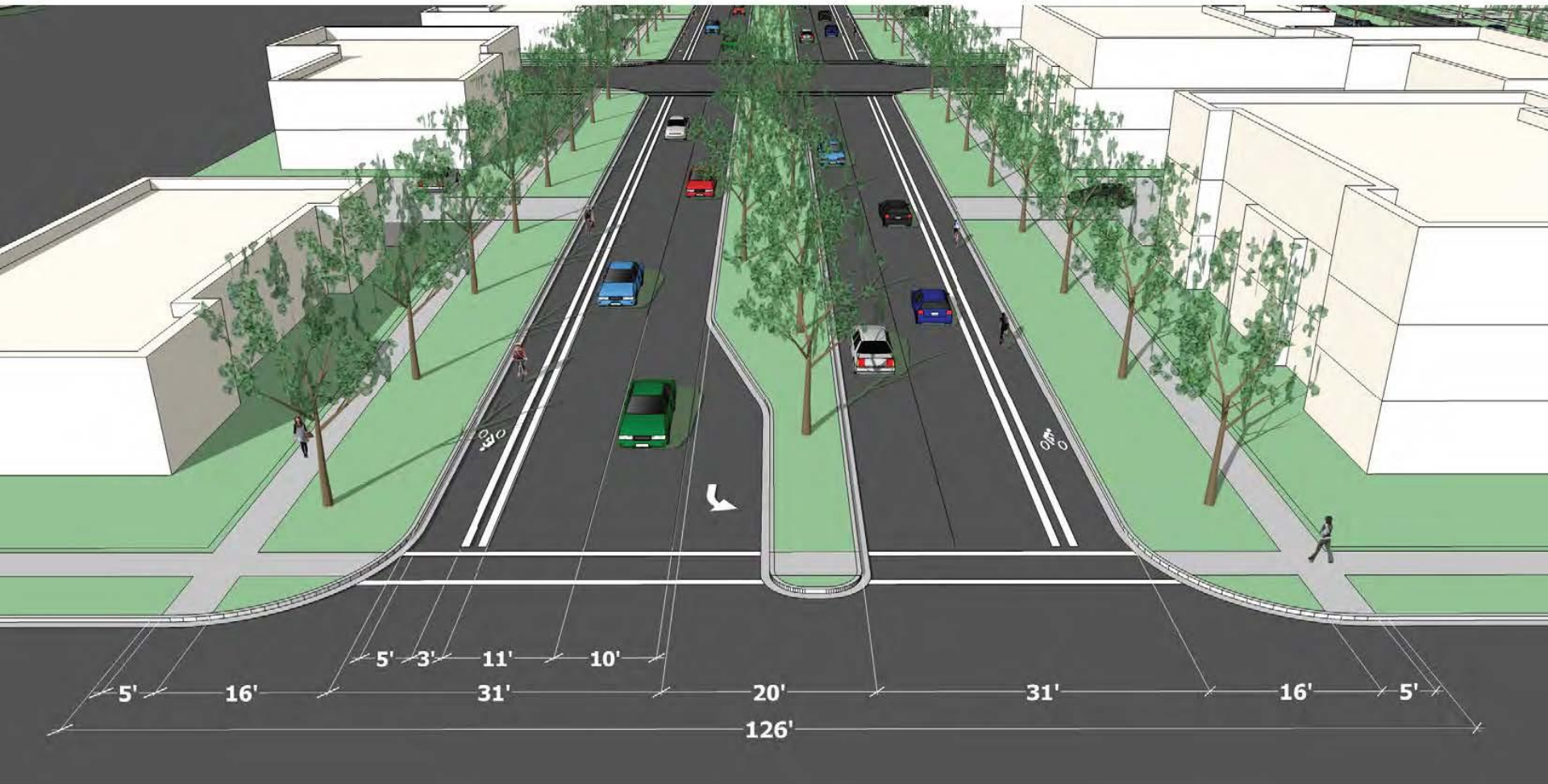




Street Typologies - Collector Chicane

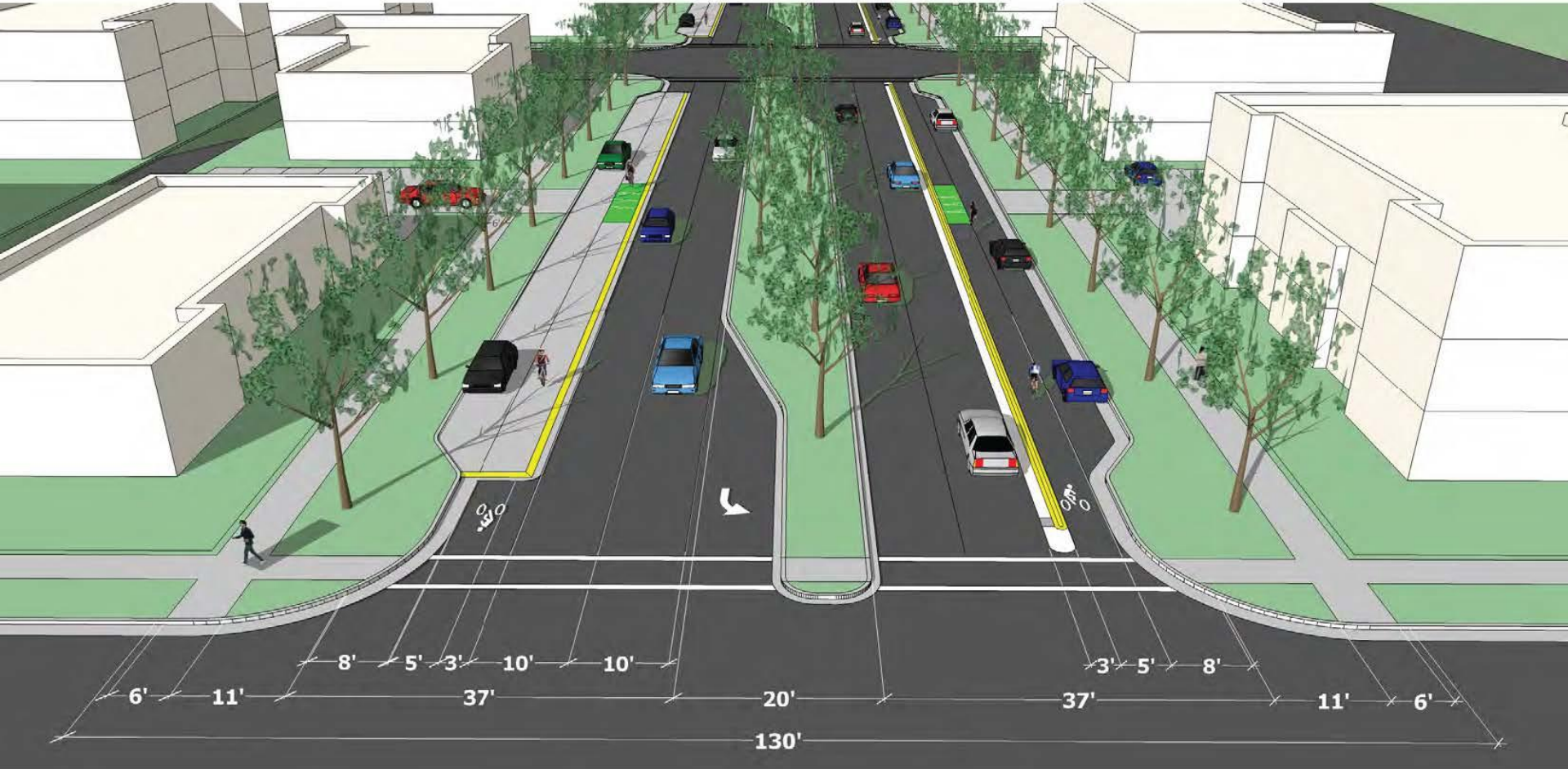


Street Typologies - Arterial Buffered Bike Lane



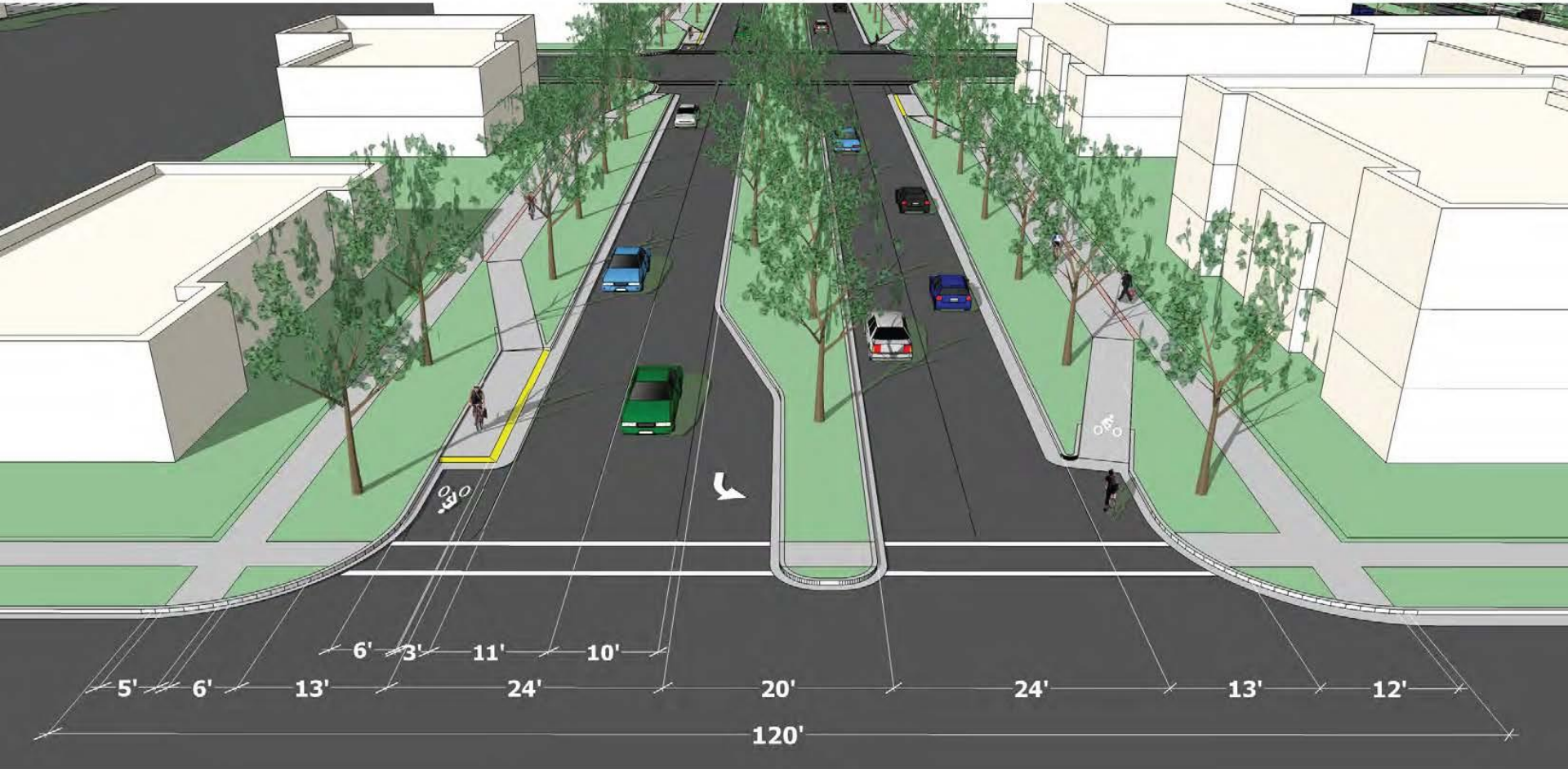


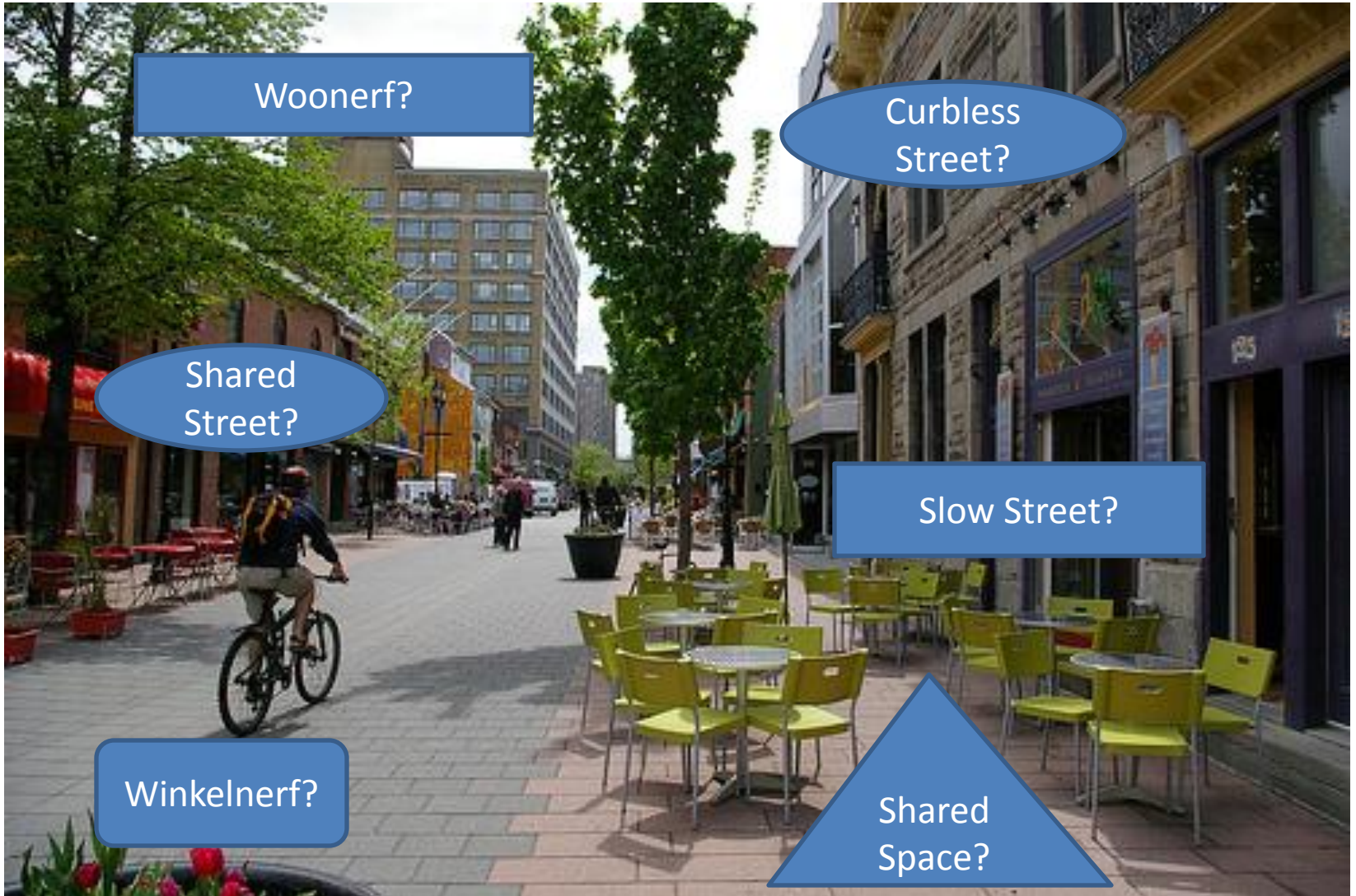
Street Typologies - Arterial Physical Buffer





Street Typologies - Arterial Cycle Track





Woonerf?

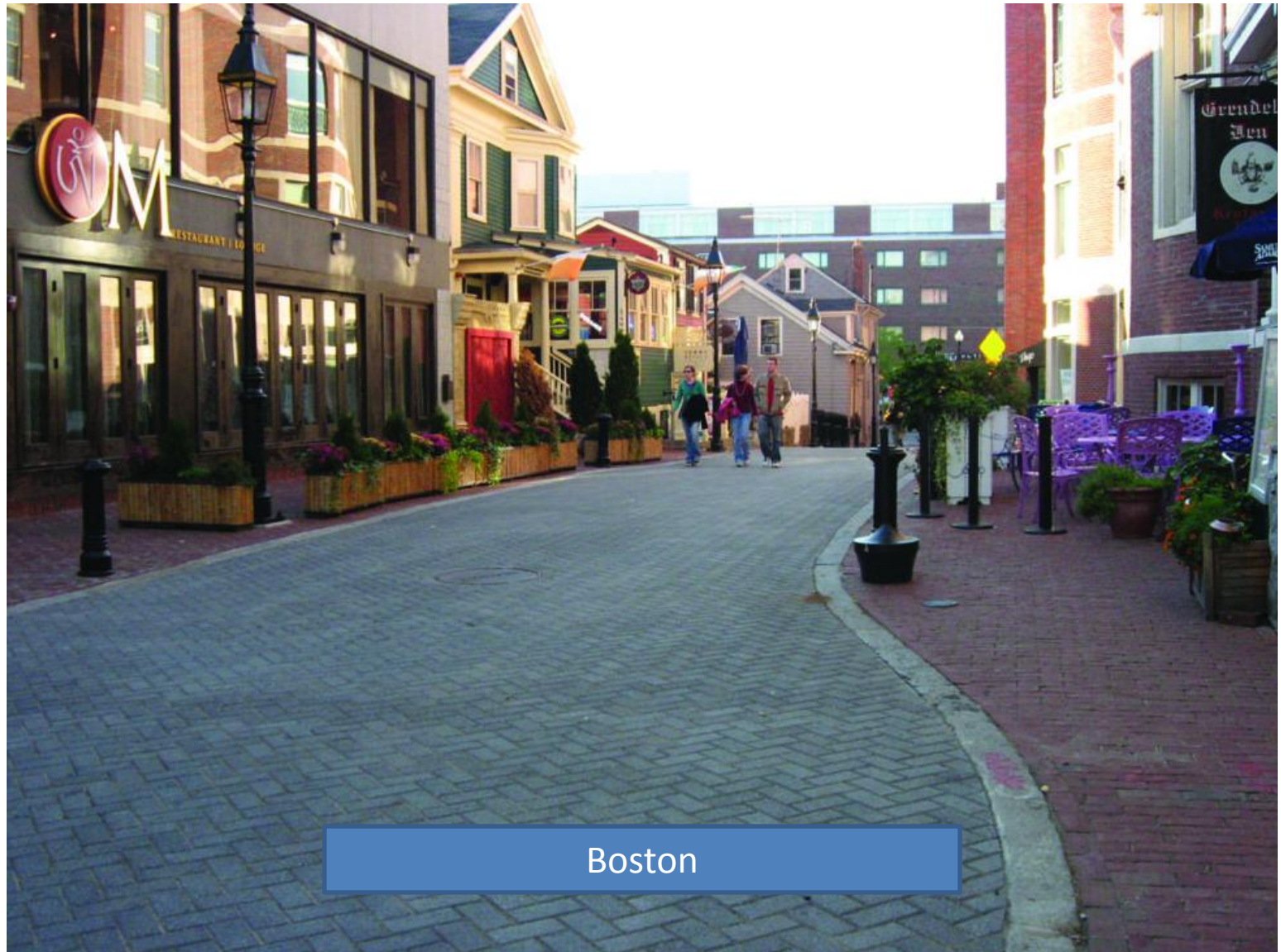
Curbless Street?

Shared Street?

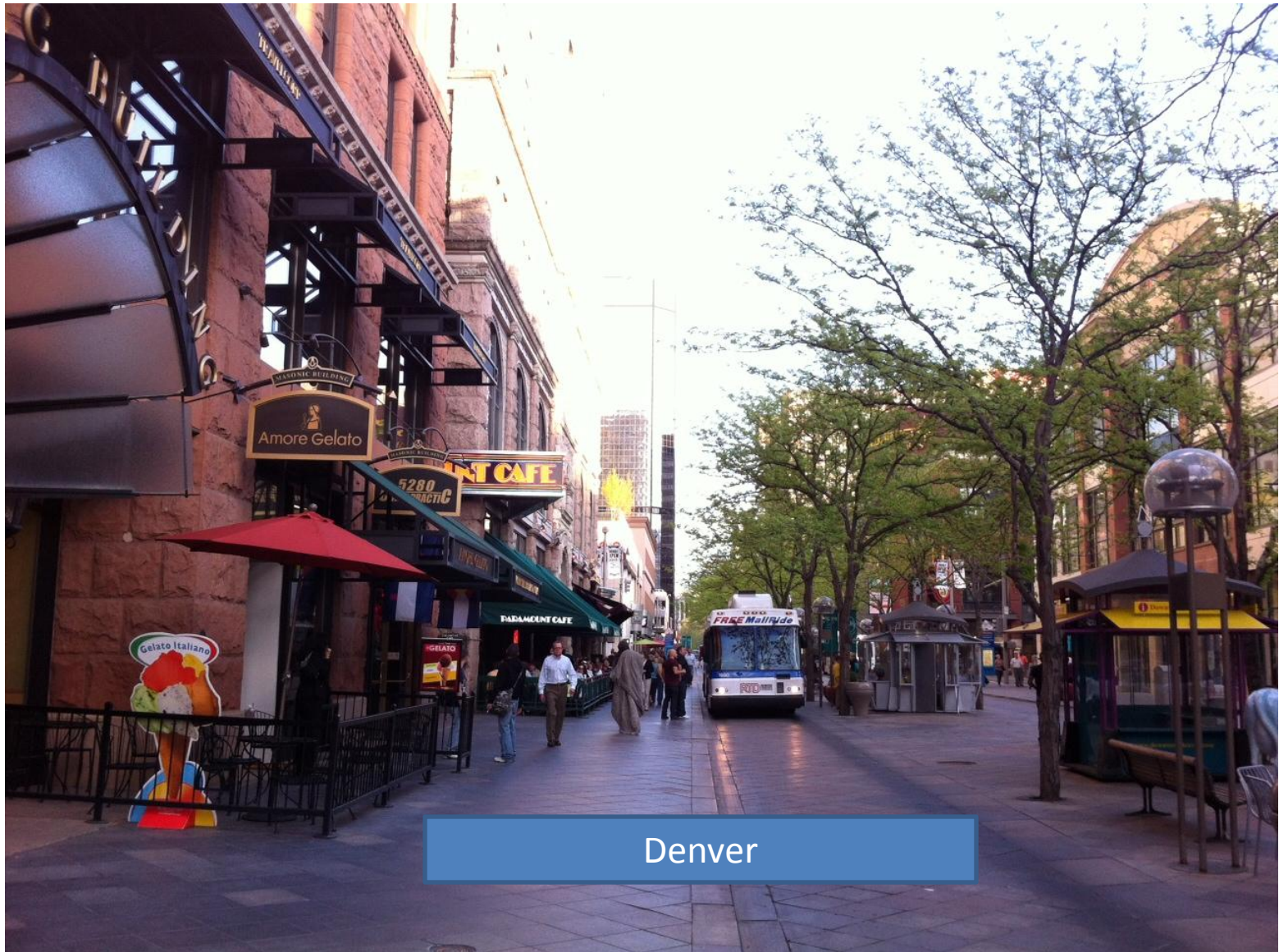
Slow Street?

Winkelnerf?

Shared Space?



Boston



Denver



heat island mitigation

climate regulation

infiltration

rain garden

flush curbs

shared throughway
(single ground surface)

parallel parking

rain garden

infiltration

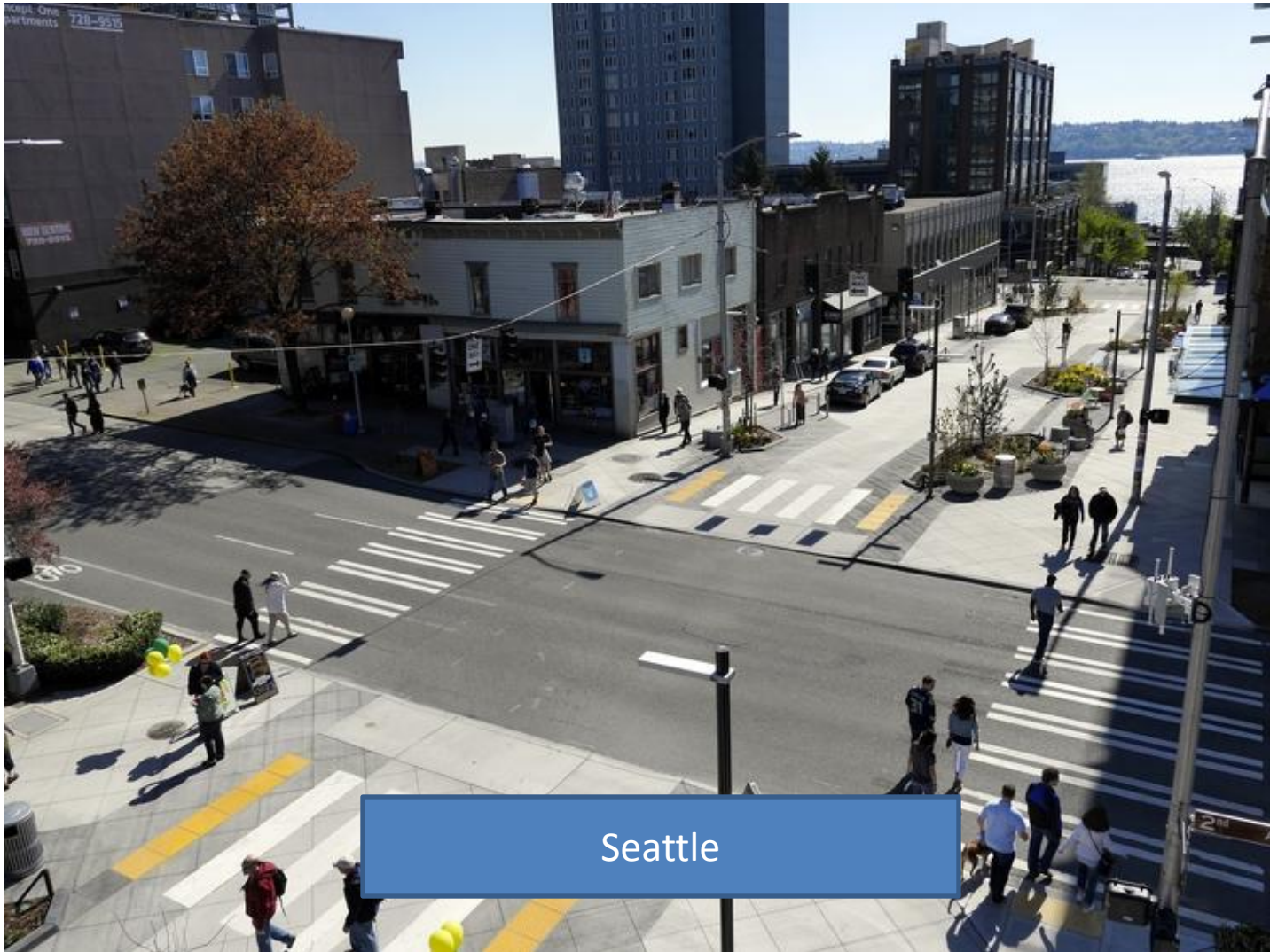
William

Eugene, OR

flush curbs



Cambridge, MA



Seattle







Batavia, IL





Washington D.C.



Vancouver, BC

2392 Edgewood Dr
Madison, Wisconsin



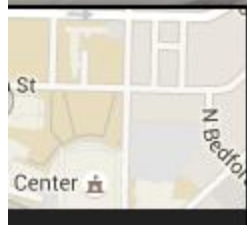
Street View - Jul 2007











Google



