

IMAGINATION CENTER AT REINDAHL PARK



Thornton Tomasetti

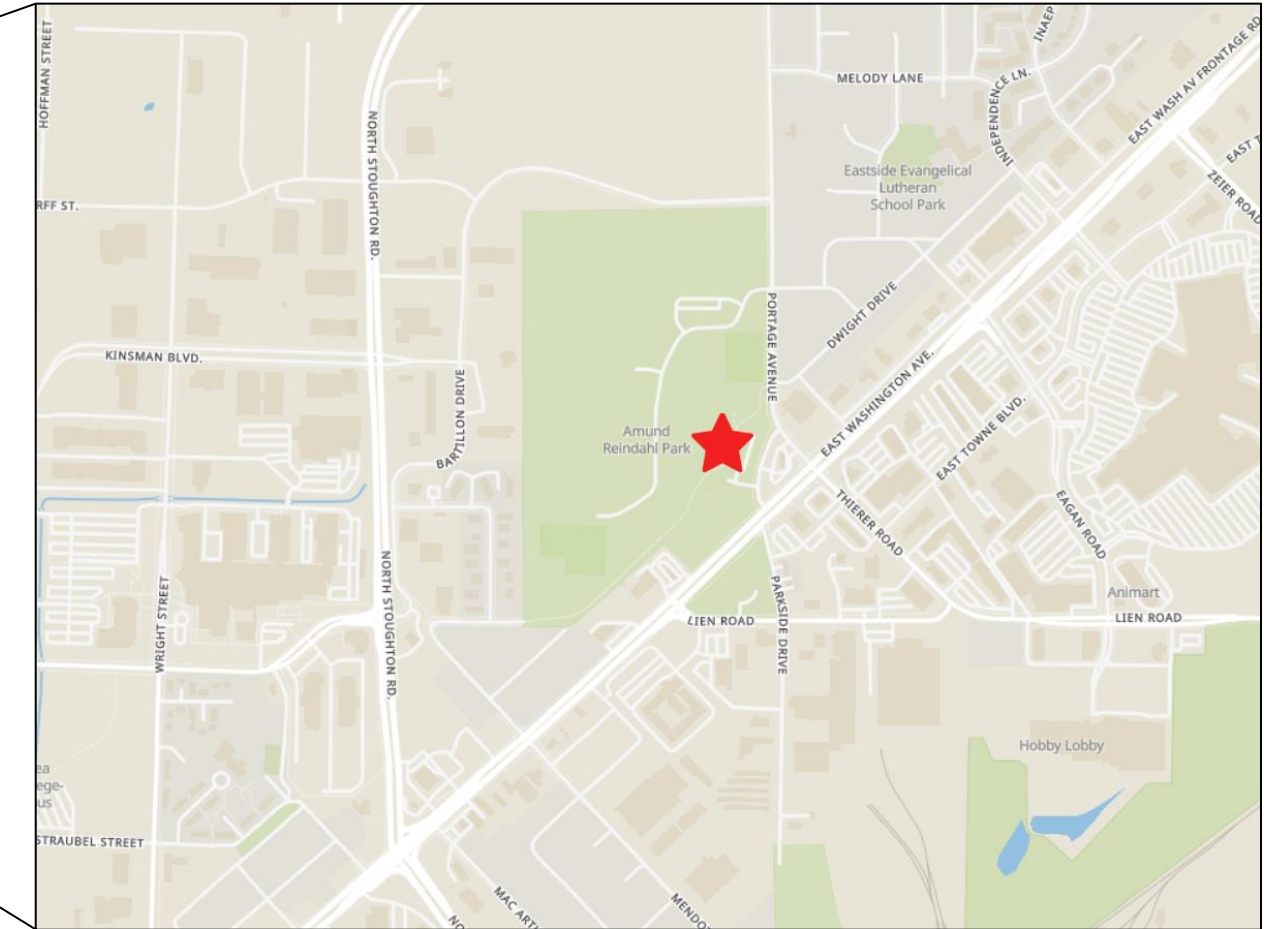
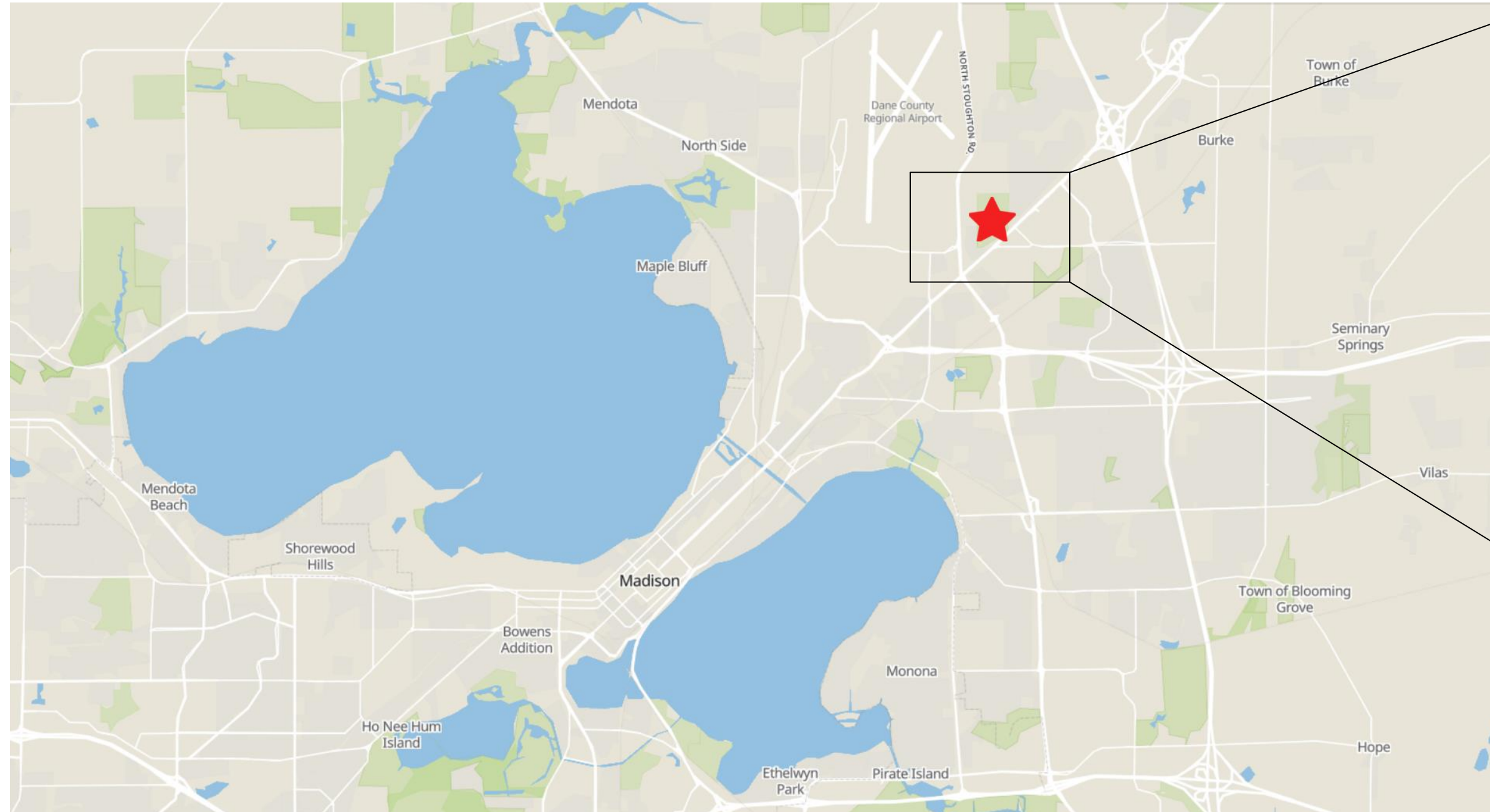
*Interior***LOGIC**
workplace strategy



play
**MADISON
PARKS**



CONTEXT



Reindahl Park is located on the Northeast side of Madison. Near by points of interest include Madison College, East Town Mall, and East Washington Ave.

EXISTING SITE



ADJACENT TO OUR SITE:

NORTH – Residential Neighborhood

EAST – East Town Mall/Retail

West – Reindahl Park and Madison College

PROXIMITY IMAGES

**EAST WASHINGTON AVE.
FACING NORTHEAST**



**EAST WASHINGTON AVE.
FACING SOUTHWEST**



**EXISTING SITE FROM
VEHICULAR ENTRANCE**



**EXISTING PARK
STRUCTURE**



PROXIMITY IMAGES

**EXISTING SITE FROM
SPLASH PAD**



**EXISTING SITE FROM
SOUTH PEDESTRIAN
PATH**



**PORTAGE ROAD FACING
NORTH**



**PORTAGE ROAD FACING
SOUTH**



CONTEXTUAL IMAGES

NEARBY POPEYE'S



NEARBY OFFICE DEPOT



NEARBY WENDY'S



RENDERED SITE PLAN

LEGEND	
	PLANTING BED
	LAWN
	NATIVE SEED MIX
	BIOFILTRATION BASIN
	STANDARD CONCRETE
	HEAVY DUTY CONCRETE
	DECORATIVE CONCRETE
	EXPANDED ASPHALT AREA
	STABILIZED AGGREGATE PATH
	METAL BED EDGING
	SPADED BED EDGE
	STONE MAINTENANCE EDGE
	PRECAST CONCRETE BENCH
	POTENTIAL ART LOCATION
	PICNIC TABLE
	ROUND TABLE AND CHAIRS
	BISTRO TABLE
	BBQ GRILL
	LITTER RECEPTACLES
	HOT COAL BIN
	EXISTING EVERGREEN TREE
	EXISTING DECIDUOUS TREE
	PROPOSED EVERGREEN TREE
	PROPOSED ORNAMENTAL TREE
	PROPOSED SHADE TREE

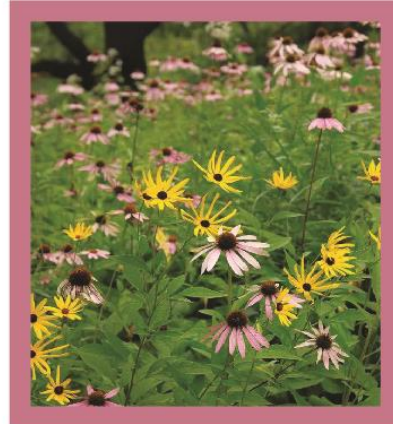


GROUND COVER DIAGRAM

Groundcover Legend



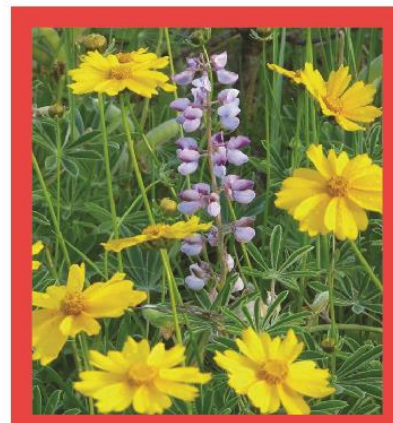
Bluegrass Lawn



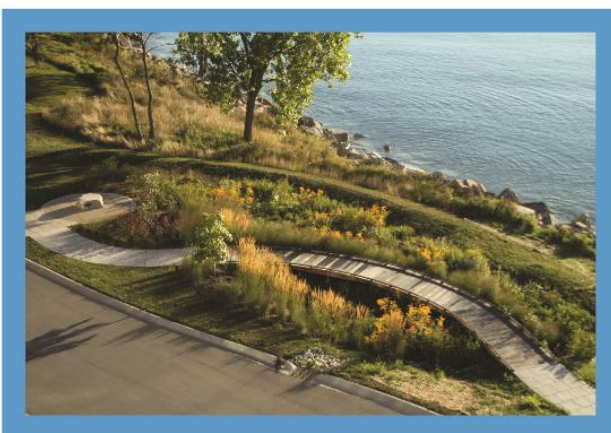
Woodland Edge -
Savannah Mix for Dry Soils



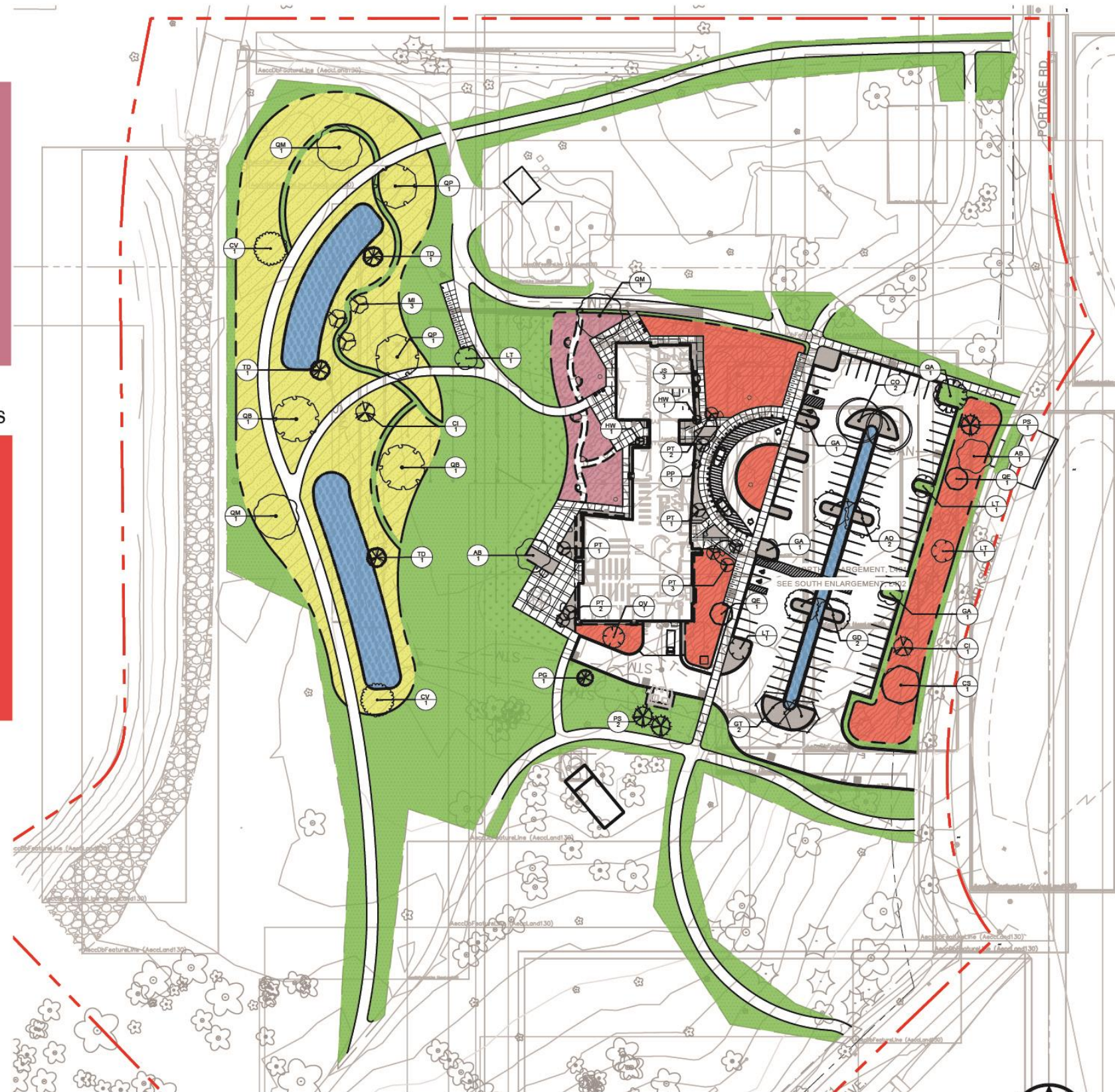
Diverse Prairie for Dry Soils



Low Growing Meadow
for Dry Soils



Biofiltration Basin



1

Landscape Plan - Trees and Groundcovers

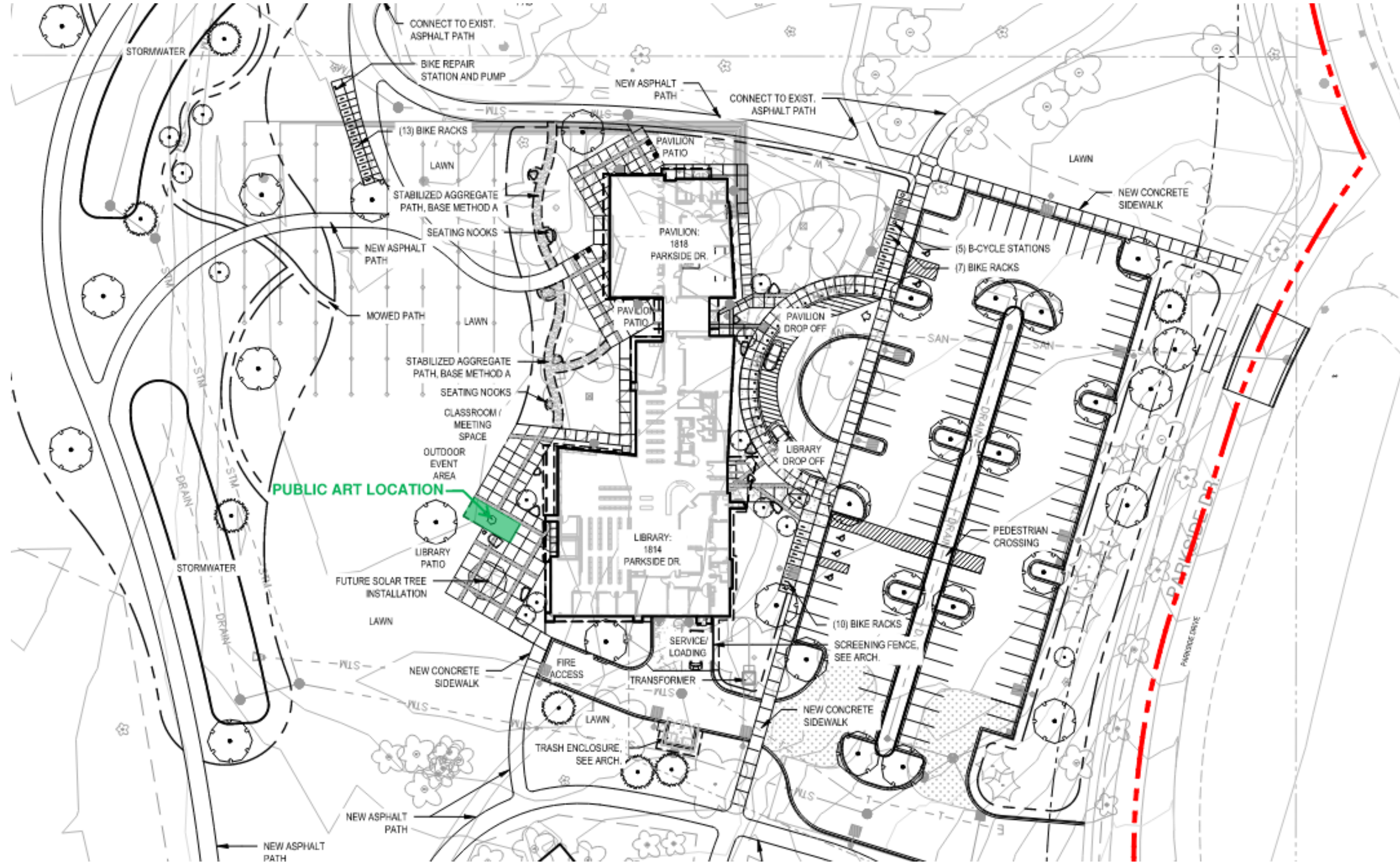
SCALE: 1"=100'-0"

0 100' 200'
1" = 100'-0"

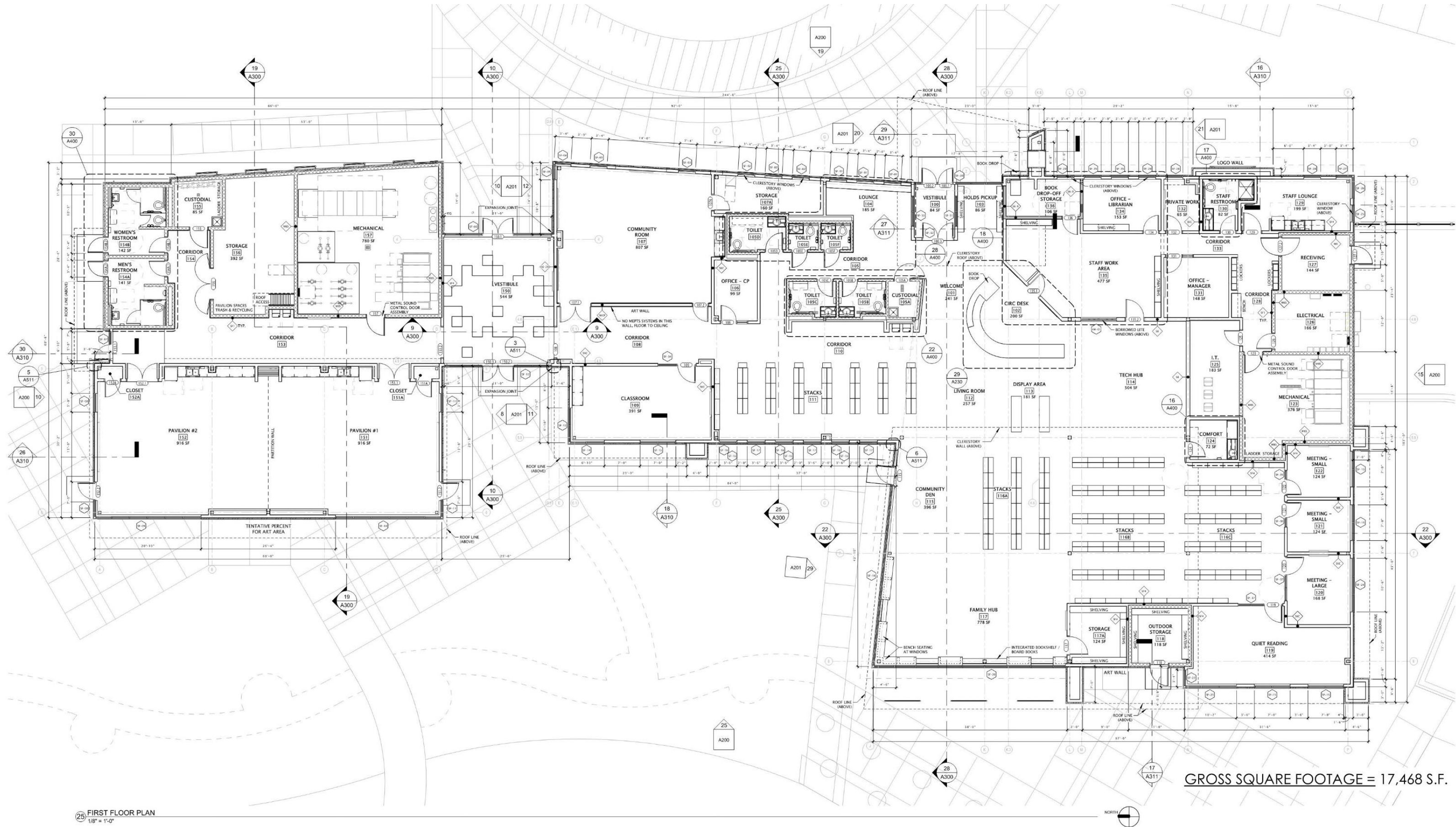


NORTH

PUBLIC ART LOCATION

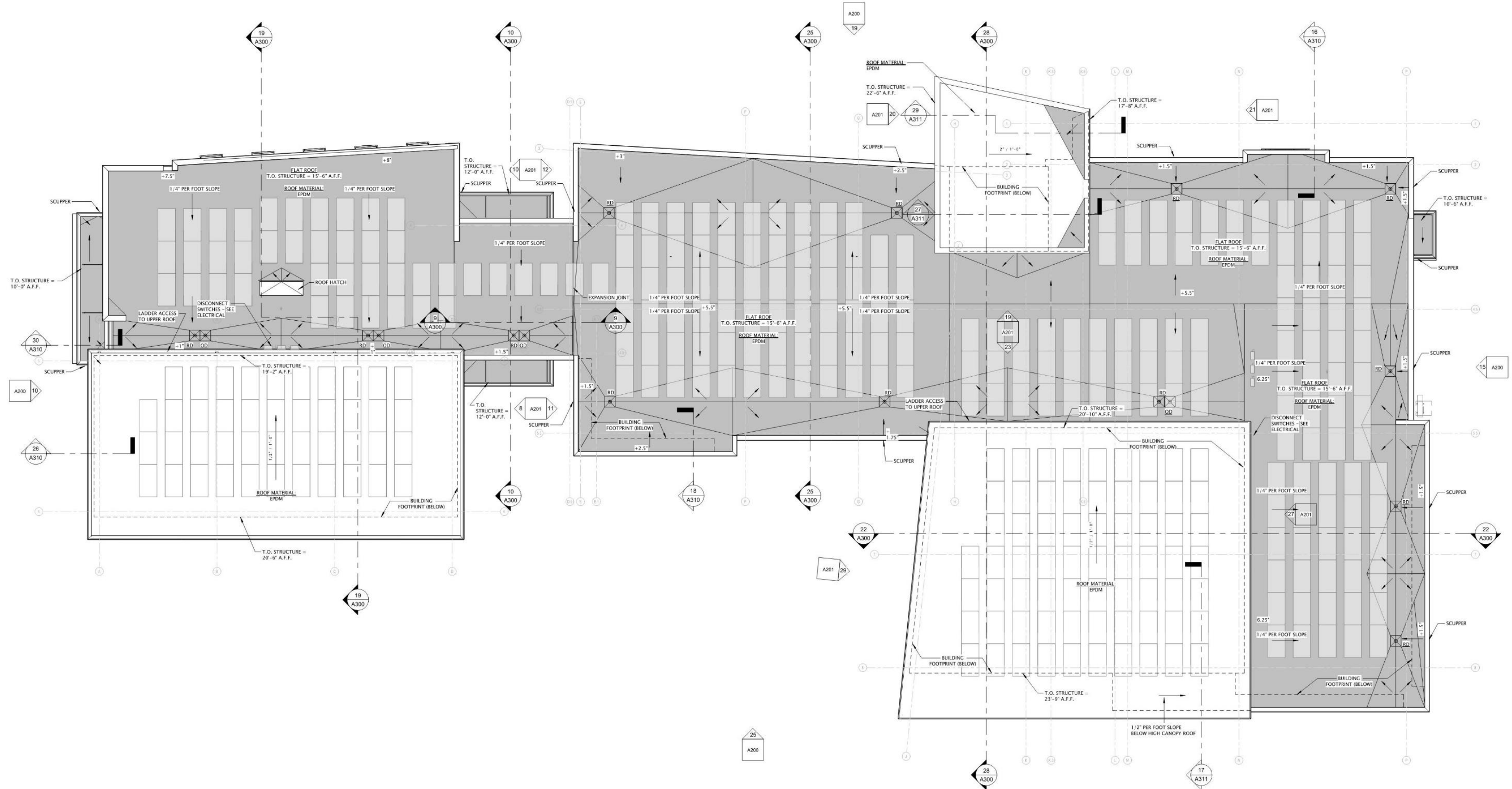


FLOOR PLAN



GROSS SQUARE FOOTAGE = 17,468 S.F.

ROOF PLAN



CURRENT VS PREVIOUS RENDERINGS



CURRENT

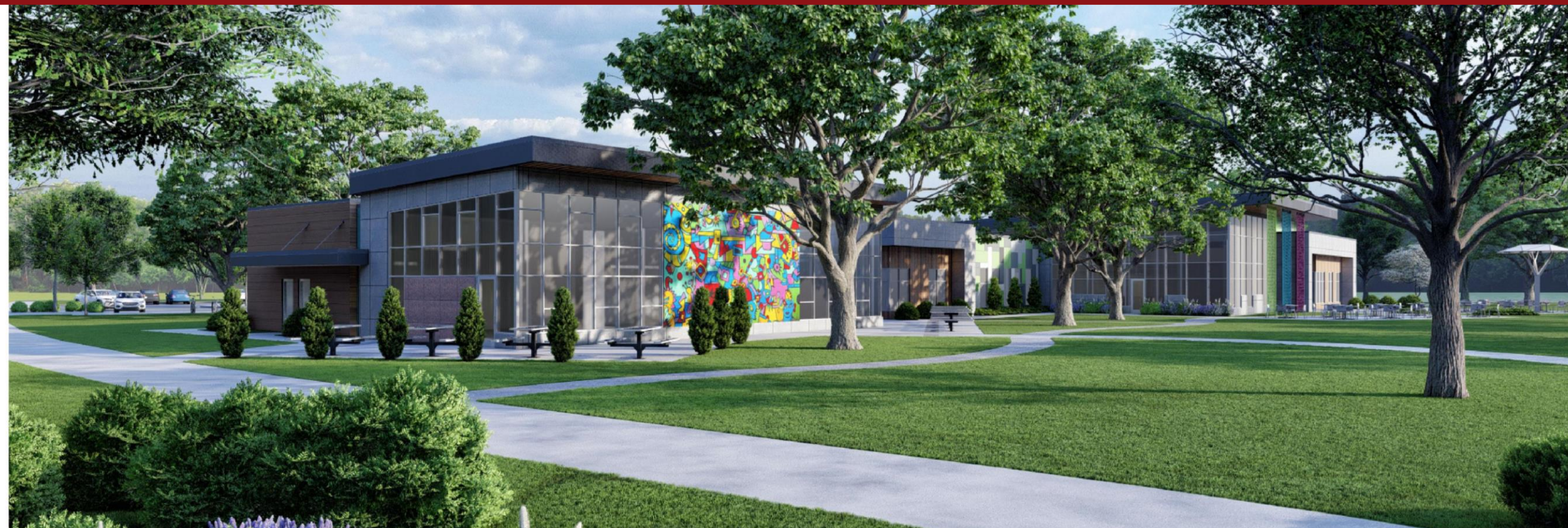


PREVIOUS

CURRENT VS PREVIOUS RENDERINGS



CURRENT



PREVIOUS

ADDITIONAL RENDERINGS

NORTH ELEVATION AT DROP-OFF CIRCLE



ADDITIONAL RENDERINGS

SOUTH ELEVATION (PARK FACING FAÇADE)



ADDITIONAL RENDERINGS

LIBRARY MAIN ENTRY



ADDITIONAL RENDERINGS

PAVILION AND LIBRARY PARK SIDE PATIOS



ADDITIONAL RENDERINGS

PARK PAVILION ENTRY FROM DROP-OFF CIRCLE



ADDITIONAL RENDERINGS

PARK PAVILION SECONDARY ENTRY



ADDITIONAL RENDERINGS

NORTHEAST PERSPECTIVE FROM PARKING LOT

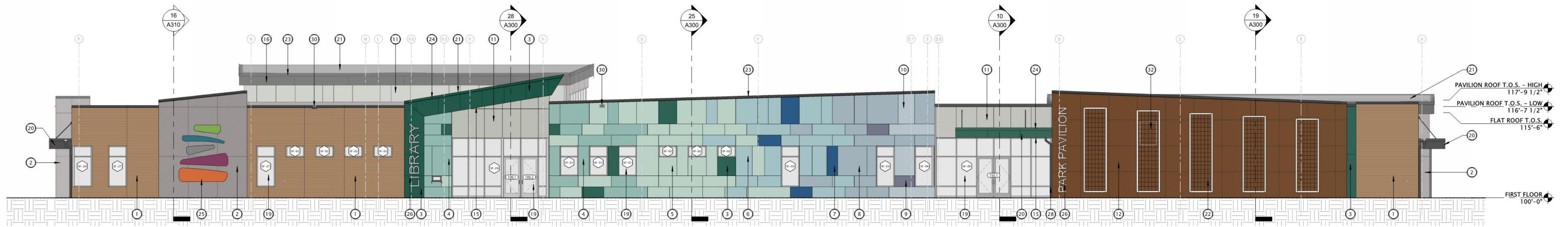


ADDITIONAL RENDERINGS

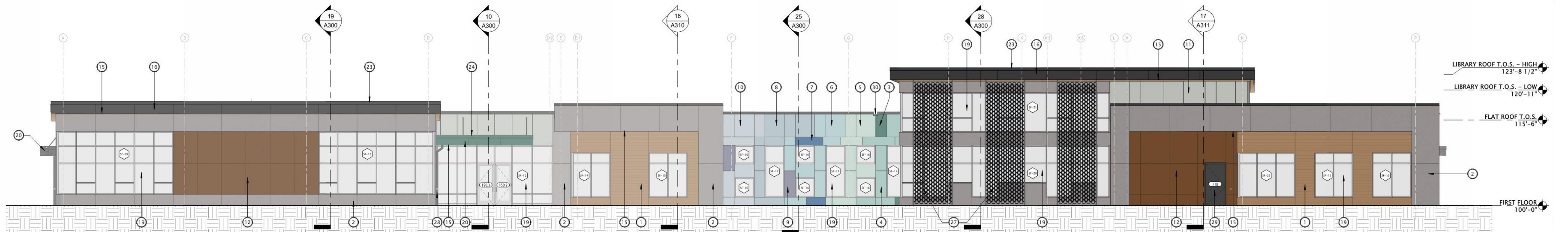
LIBRARY PATIO FROM PARK



CURRENT ELEVATIONS - COLOR

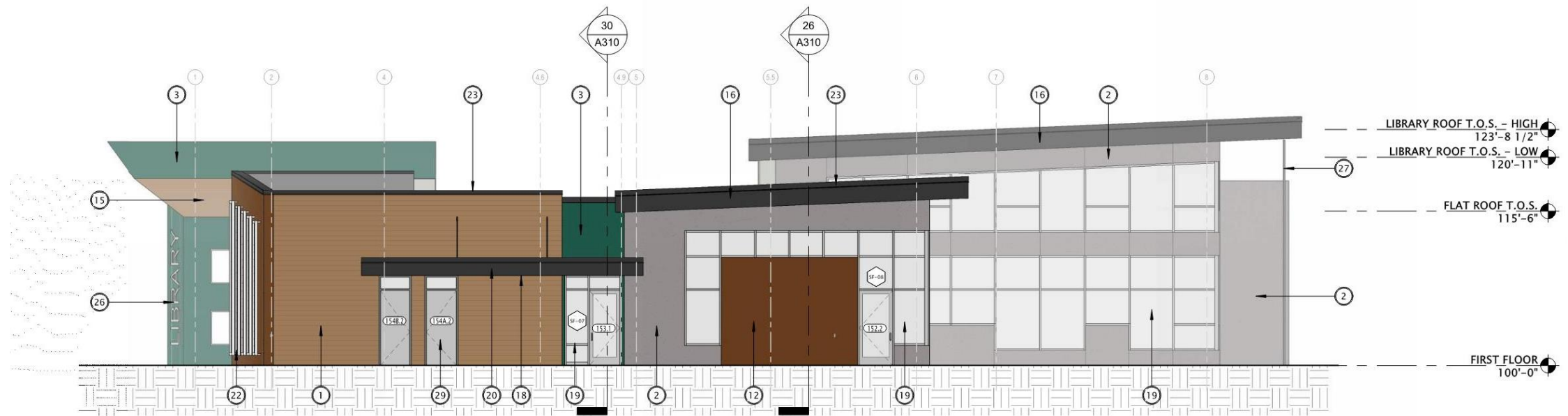


19 EAST ELEVATION - OVERALL
1/8" = 1'-0"



25 WEST ELEVATION - OVERALL
1/8" = 1'-0"

CURRENT ELEVATIONS - COLOR



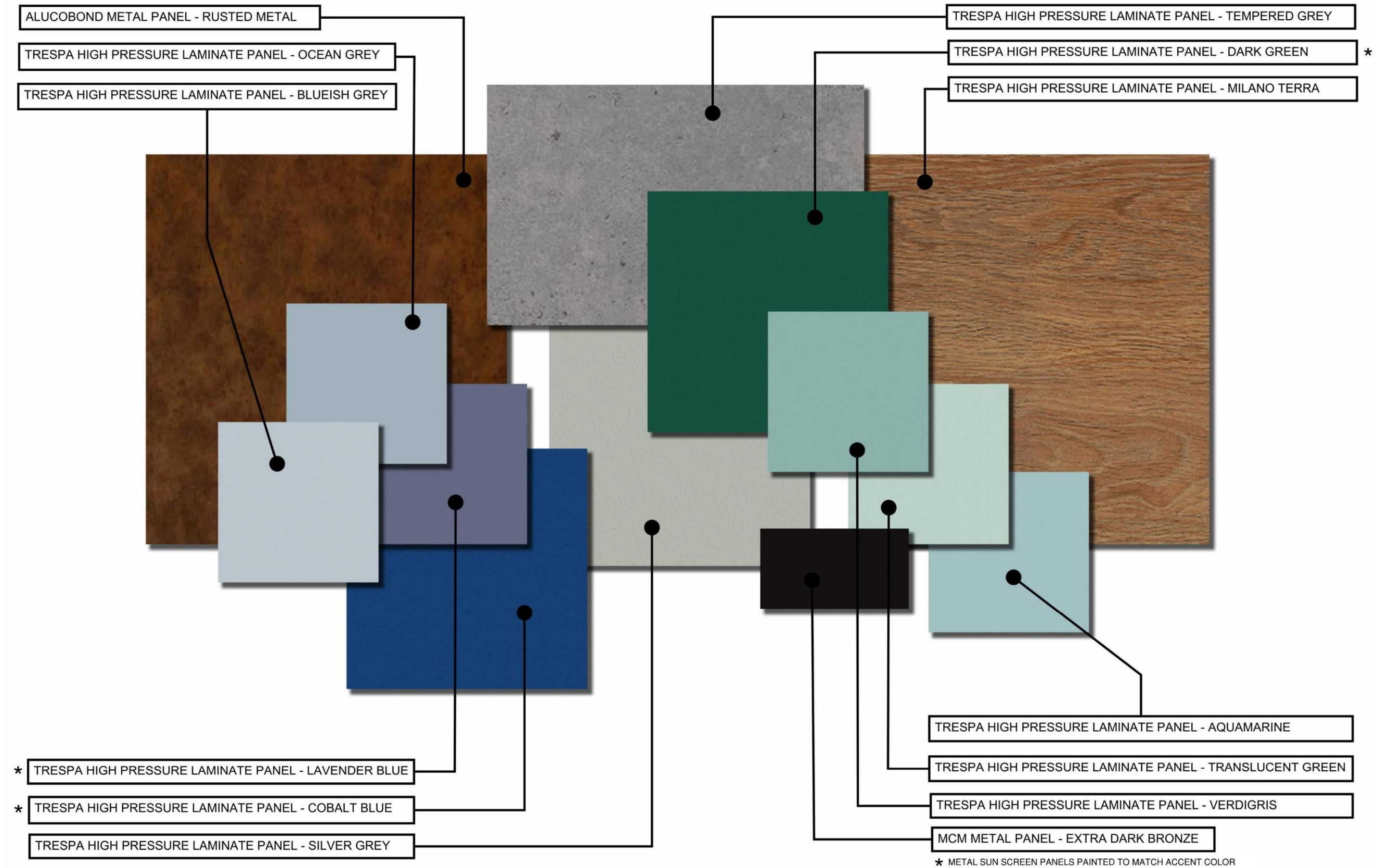
10 NORTH ELEVATION - OVERALL
1/8" = 1'-0"



15 SOUTH ELEVATION - OVERALL
1/8" = 1'-0"

EXTERIOR MATERIALS SCHEDULE		
MARK	MANUFACTURER	COLOR
1	TRESPA WALL PANELS	MILANO TERRA
2	TRESPA WALL PANELS	TEMPERED GREY
3	TRESPA WALL PANELS	DARK GREEN
4	TRESPA WALL PANELS	VERDIGRIS
5	TRESPA WALL PANELS	TRANSLUCENT GREEN
6	TRESPA WALL PANELS	AQUAMARINE
7	TRESPA WALL PANELS	COBALT BLUE
8	TRESPA WALL PANELS	OCEAN GREY
9	TRESPA WALL PANELS	LAVENDER BLUE
10	TRESPA WALL PANELS	BLUISH GREY
11	TRESPA WALL PANELS	SILVER GREY
12	ALUCOBOND WALL PANELS	CORTEN
13	TRESPA-WRAPPED WALL OPENINGS	VERDIGRIS
14	TRESPA-WRAPPED WALL OPENINGS	TRANSLUCENT GREEN
15	TRESPA SOFFIT PANELS	MILANO TERRA
16	METAL COMPOSITE MATERIAL (MCM) PANELS	BLACK
18	METAL COMPOSITE MATERIAL (MCM) SOFFIT	BLACK
19	INSULATED ALUMINUM STOREFRONT	CLEAR ANODIZED
20	ROOF AWNING - FRAMED	--
21	EDPM ROOF	BLACK
22	METAL & CABLE RAIL WALL TRELLIS	WHITE
23	METAL WALL COPING	BLACK
24	METAL WALL COPING	DARK GREEN
25	BUILDING LOGO	TBD
26	DIMENSIONAL BUILDING LETTERING	TBD
27	EXTERIOR ALUMINUM SHADING DEVICE	TBD
29	INSULATED HOLLOW METAL DOOR	DARK GREY

EXTERIOR MATERIALS



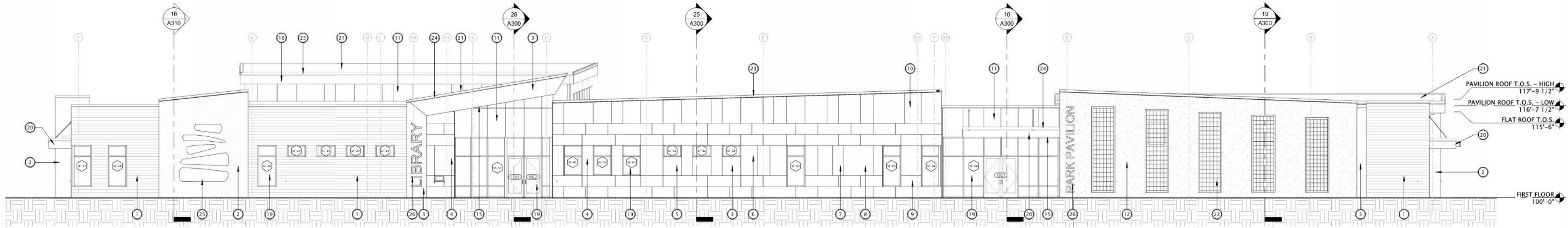


JLA
ARCHITECTS

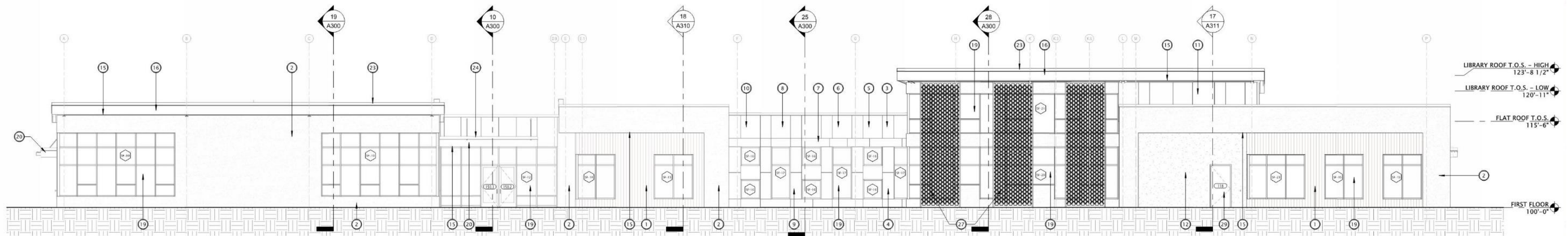
THANK YOU

JLA-AP.COM

CURRENT ELEVATIONS – BLACK & WHITE

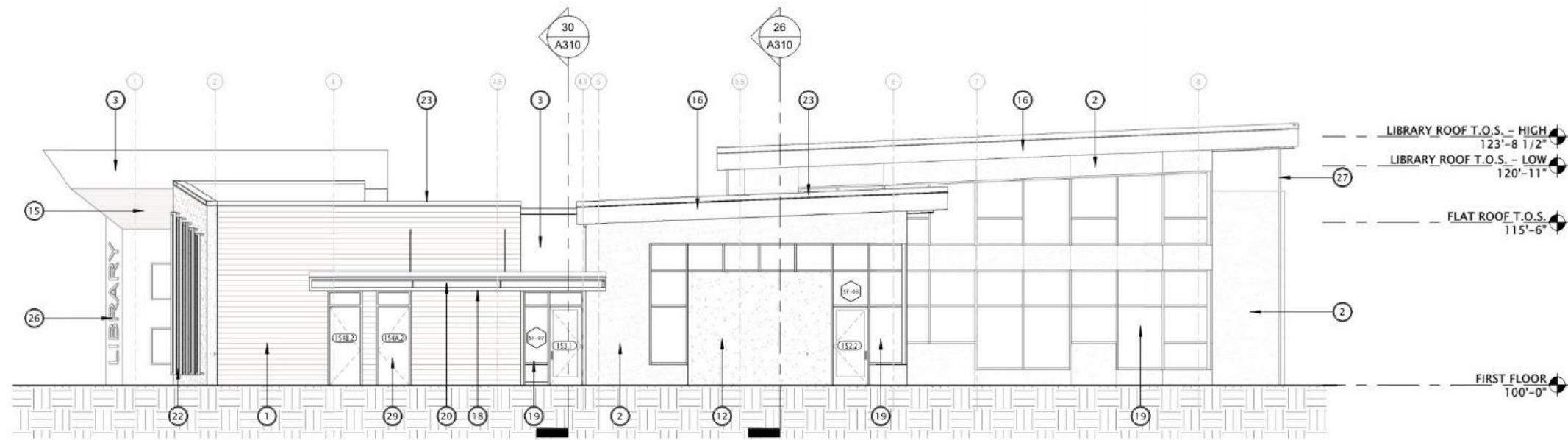


19 EAST ELEVATION - OVERALL
1/8" = 1'-0"

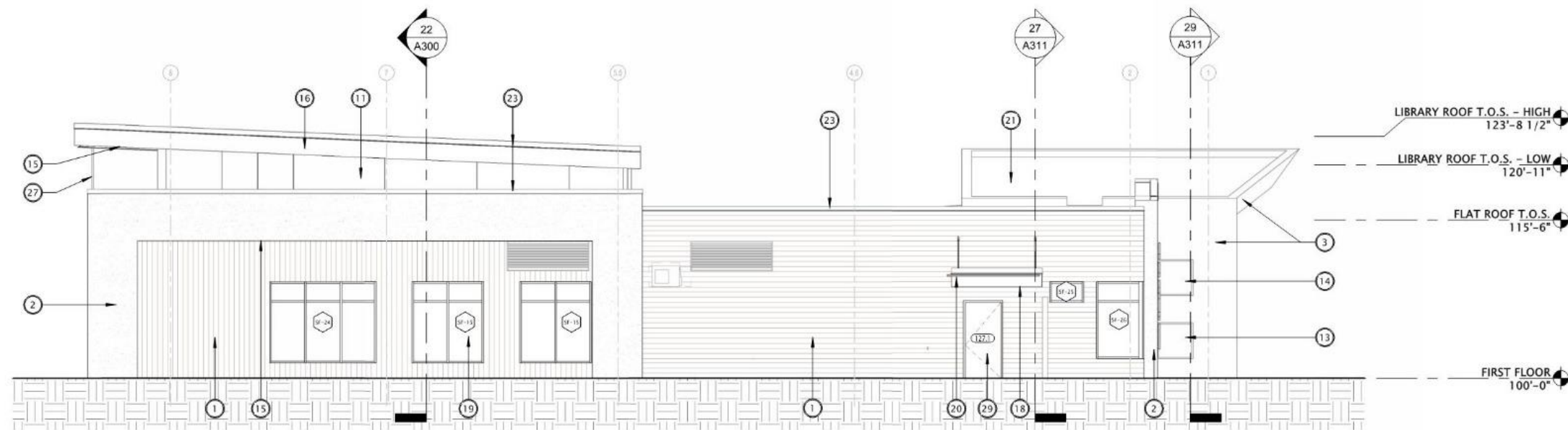


25 WEST ELEVATION - OVERALL
1/8" = 1'-0"

CURRENT ELEVATIONS – BLACK & WHITE



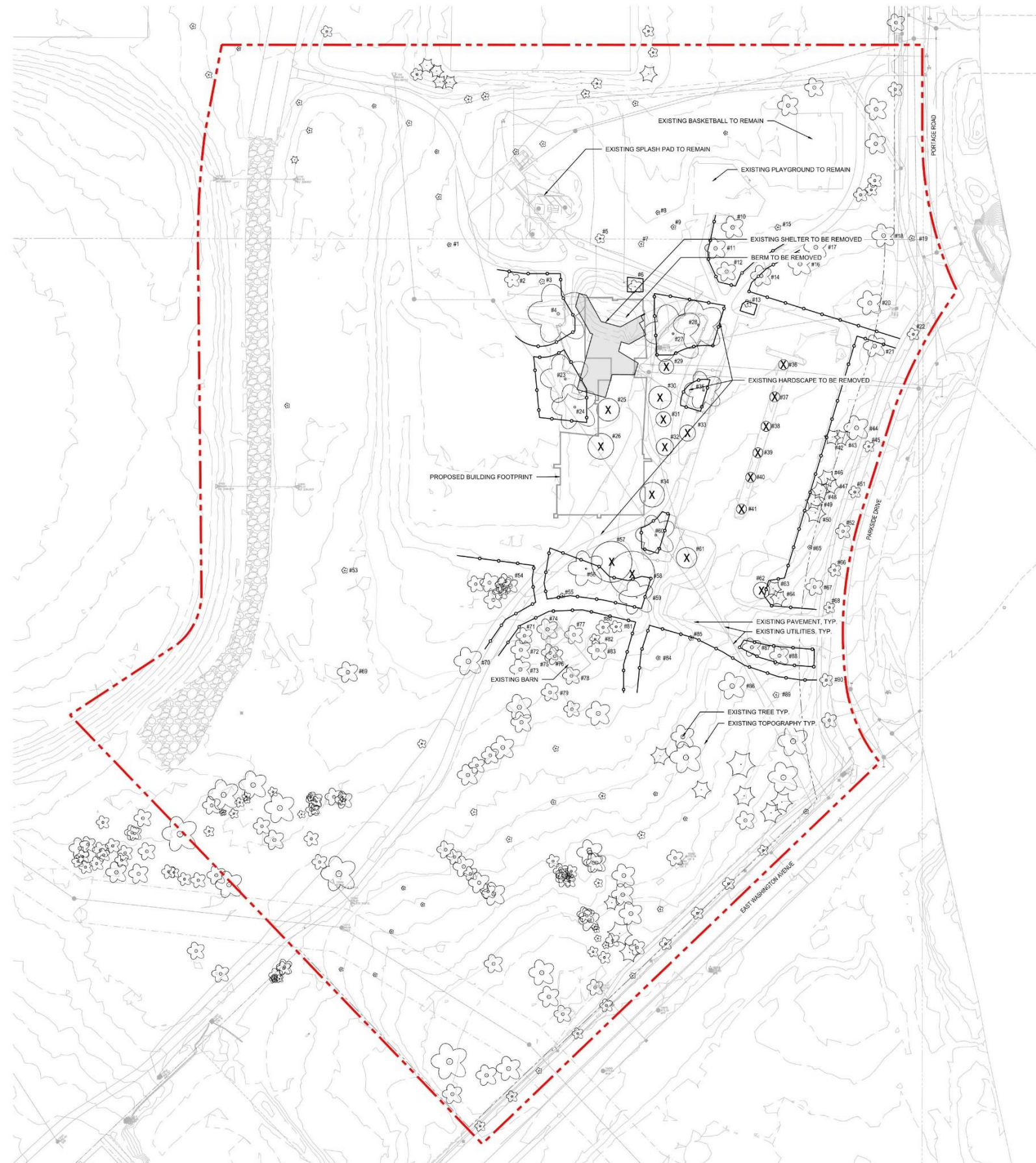
10 NORTH ELEVATION - OVERALL
1/8" = 1'-0"



15 SOUTH ELEVATION - OVERALL
1/8" = 1'-0"

EXTERIOR MATERIALS SCHEDULE		
MARK	MANUFACTURER	COLOR
1	TRESPA WALL PANELS	MILANO TERRA
2	TRESPA WALL PANELS	TEMPERED GREY
3	TRESPA WALL PANELS	DARK GREEN
4	TRESPA WALL PANELS	VERDIGRIS
5	TRESPA WALL PANELS	TRANSLUCENT GREEN
6	TRESPA WALL PANELS	AQUAMARINE
7	TRESPA WALL PANELS	COBALT BLUE
8	TRESPA WALL PANELS	OCEAN GREY
9	TRESPA WALL PANELS	LAVENDER BLUE
10	TRESPA WALL PANELS	BLUISH GREY
11	TRESPA WALL PANELS	SILVER GREY
12	ALUCOBOND WALL PANELS	CORTEN
13	TRESPA-WRAPPED WALL OPENINGS	VERDIGRIS
14	TRESPA-WRAPPED WALL OPENINGS	TRANSLUCENT GREEN
15	TRESPA SOFFIT PANELS	MILANO TERRA
16	METAL COMPOSITE MATERIAL (MCM) PANELS	BLACK
18	METAL COMPOSITE MATERIAL (MCM) SOFFIT	BLACK
19	INSULATED ALUMINUM STOREFRONT	CLEAR ANODIZED
20	ROOF AWNING - FRAMED	--
21	EDPM ROOF	BLACK
22	METAL & CABLE RAIL WALL TRELLIS	WHITE
23	METAL WALL COPING	BLACK
24	METAL WALL COPING	DARK GREEN
25	BUILDING LOGO	TBD
26	DIMENSIONAL BUILDING LETTERING	TBD
27	EXTERIOR ALUMINUM SHADING DEVICE	TBD
28	ART INSTALLATION	TBD
29	INSULATED HOLLOW METAL DOOR	DARK GREY

EXISTING TREE PROTECTION



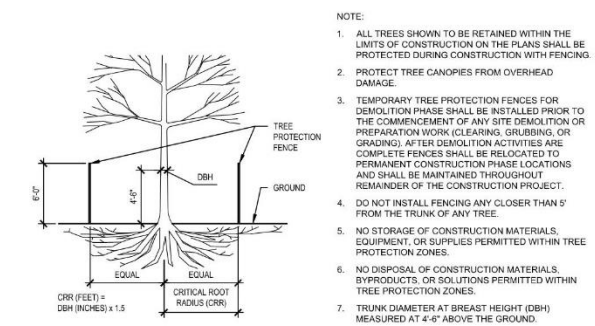
LEGEND

- (X) TREE TO BE REMOVED
- DECIDUOUS TREE TO REMAIN
- ★ EVERGREEN TREE TO REMAIN
- TREE PROTECTION FENCING, TEMPORARY DEMOLITION PHASE
- TREE PROTECTION FENCING, PERMANENT CONSTRUCTION PHASE

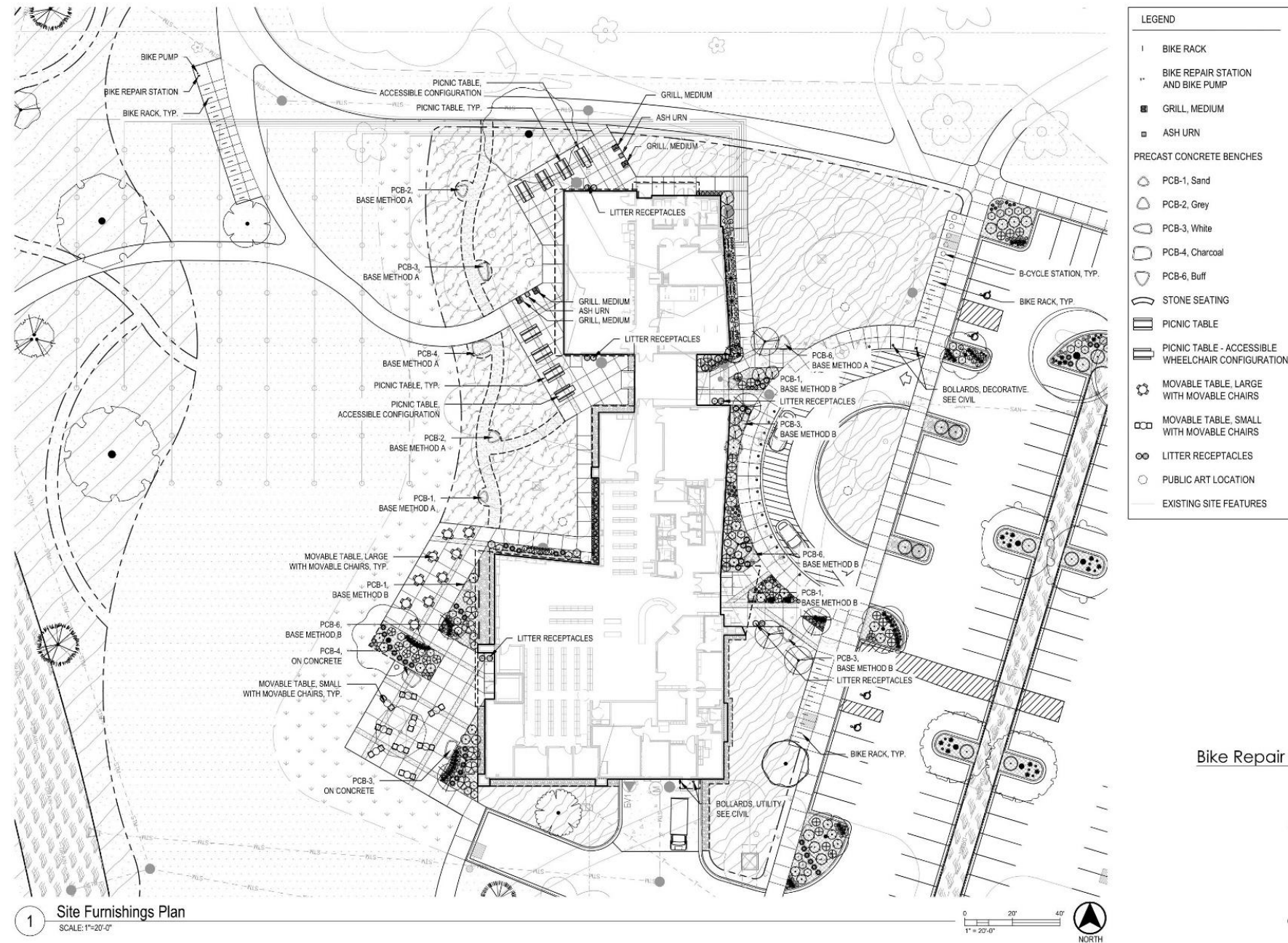
NOTE: SEE CIVIL DEMOLITION AND EROSION CONTROL PLAN FOR MORE SITE DEMOLITION INFORMATION

Tree Disposition Schedule
Imagination Center at Reindahl Park
Madison, WI

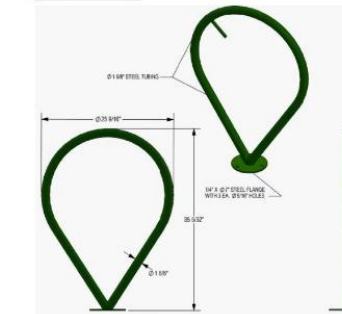
Iden.	Cal.	Species	Disposition	Iden.	Cal.	Species	Disposition
1	24"	Unknown	Remain	46	18"	Red Pine	Remain
2	6"	Elm	Remain	47	16"	Red Pine	Remain
3	1"	Hackberry	Remain	48	20"	Red Pine	Remain
4	36"	Locust	Remain	49	18"	Red Pine	Remain
5	7"	Elm	Remain	50	24"	Red Pine	Remain
6	6"	Elm	Remain	51	10"	Maple	Remain
7	3"	Maple	Remain	52	14"	Maple	Remain
8	1"	Locust	Remain	53	3"	unknown	Remain
9	2"	Maple	Remain	54	clump	Box Elder	Remain
10	26"	Locust	Remain	55	2"	unknown	Remain
11	24"	Unknown	Remain	56	22"	Hackberry	Remain
12	21"	Red/Black Oak	Remain	57	19"	Hackberry	Remove
13	5"	Unknown	Remain	58	18"	Hackberry	Remove
14	24"	Red/Black Oak	Remain	59	15"	Hackberry	Remain
15	3"	Unknown	Remain	60	26"	Basswood	Remain
16	28"	Maple	Remain	61	22"	Locust	Remove
17	28"	Maple	Remain	62	18"	Red Pine	Remove
18	28"	Locust	Remain	63	16"	Red Pine	Remain
19	3"	Crabapple	Remain	64	16"	Red Pine	Remain
20	30"	Locust	Remain	65	1"	Lilac	Remain
21	26"	Locust	Remain	66	11"	Maple	Remain
22	10"	Maple	Remain	67	18"	Burr/White Oak	Remain
23	27"	Locust	Remain	68	9"	Maple	Remain
24	26"	Locust	Remain	69	24"	Box Elder	Remain
25	24"	Basswood	Remove	70	36"	Box Elder	Remain
26	30"	Basswood	Remove	71	16"	Box Elder	Remain
27	26"	Locust	Remain	72	22"	Box Elder	Remain
28	28"	Locust	Remain	73	24"	Box Elder	Remain
29	12"	Crabapple	Remove	74	24"	Box Elder	Remain
30	26"	Basswood	Remove	75	18"	Box Elder	Remain
31	13"	Chestnut	Remove	76	18"	Box Elder	Remain
32	18"	Chestnut	Remove	77	20"	Birch, 2-trunk	Remain
33	14"	Chestnut	Remove	78	18"	Crabapple	Remain
34	28"	Locust	Remove	79	18"	Crabapple	Remain
35	24"	Locust	Remain	80	12"	Crabapple, 3-trunk	Remain
36	2"	Locust	Remove	81	10"	Crabapple, 3-trunk	Remain
37	2"	Locust	Remove	82	8"	Crabapple, 3-trunk	Remain
38	3"	Locust	Remove	83	22"	Birch	Remain
39	3"	Locust	Remove	84	1"	Unknown	Remain
40	3"	Locust	Remove	85	2"	Unknown	Remain
41	3"	Locust	Remove	86	34"	Locust	Remain
42	16"	Spruce	Remain	87	20"	Chestnut	Remain
43	16"	Spruce	Remain	88	21"	Chestnut	Remain
44	30"	Locust	Remain	89	3"	Crabapple	Remain
45	9"	Maple	Remain	90	11"	Maple	Remain



SITE FURNISHINGS



Bike Rack



Bike Pump



Bike Repair Station



Picnic Table



Movable Table, Small



Movable Table, Large



Movable Chairs



Grill, Medium



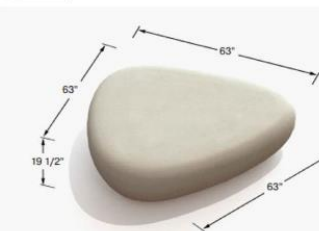
Ash Urn



PCB-1



PCB-2



PCB-3



PCB-4



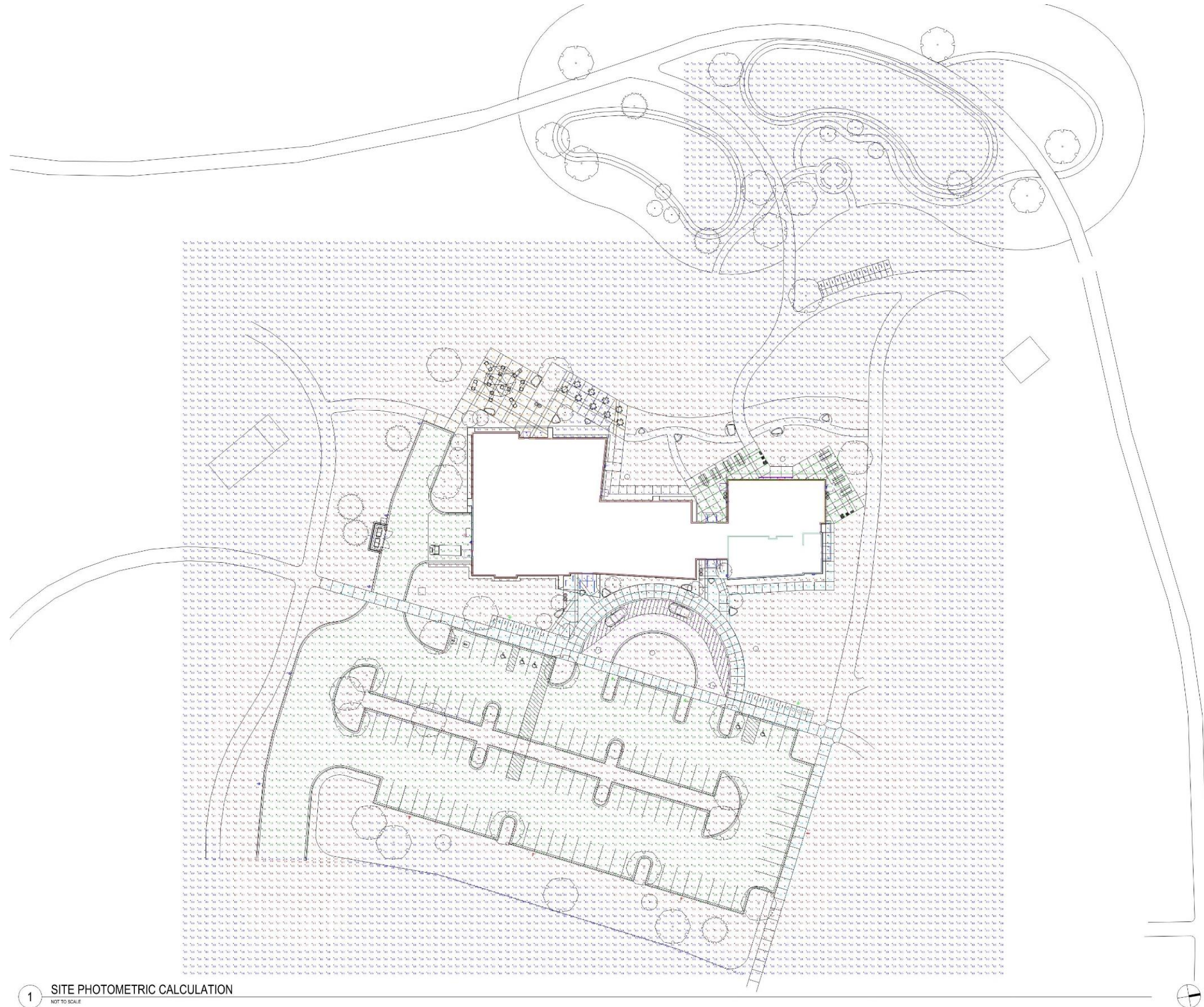
PCB-6



Litter Receptacle



PHOTOMETRIC



SITE PLANTINGS



