



Architecture
Commercial
Residential
Interior Design

**REQUEST FOR INFORMATIONAL PRESENTATION AT APRIL 23 UDC
502-504 WEST MAIN**

ATTEN: AL MARTIN

On behalf of Keller Real estate Group we request an informational presentation for the above project. The project will combine the property at 502 (Currently UMX) and 504 (currently Dr2). To date we have presented to Alder Verveer and Bassett Neighborhood and submitted to the City on April 2, with supplementary information on April 7. We are proposing a 4 story mixed use building with 18 studio/one bedroom units as a sister project to Tuscan Place to further provide context in this emerging neighborhood. We look forward to your informational review at this point.

Respectfully submitted April 10, 2014

Ed

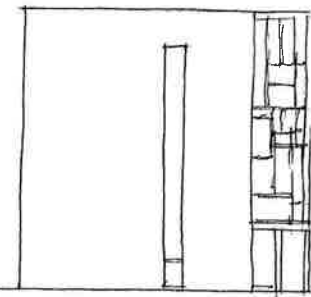
Ed Linville, AIA

Linville Architects, LLC
408 E. Wilson St.
Madison, WI 53703
608-251.6696



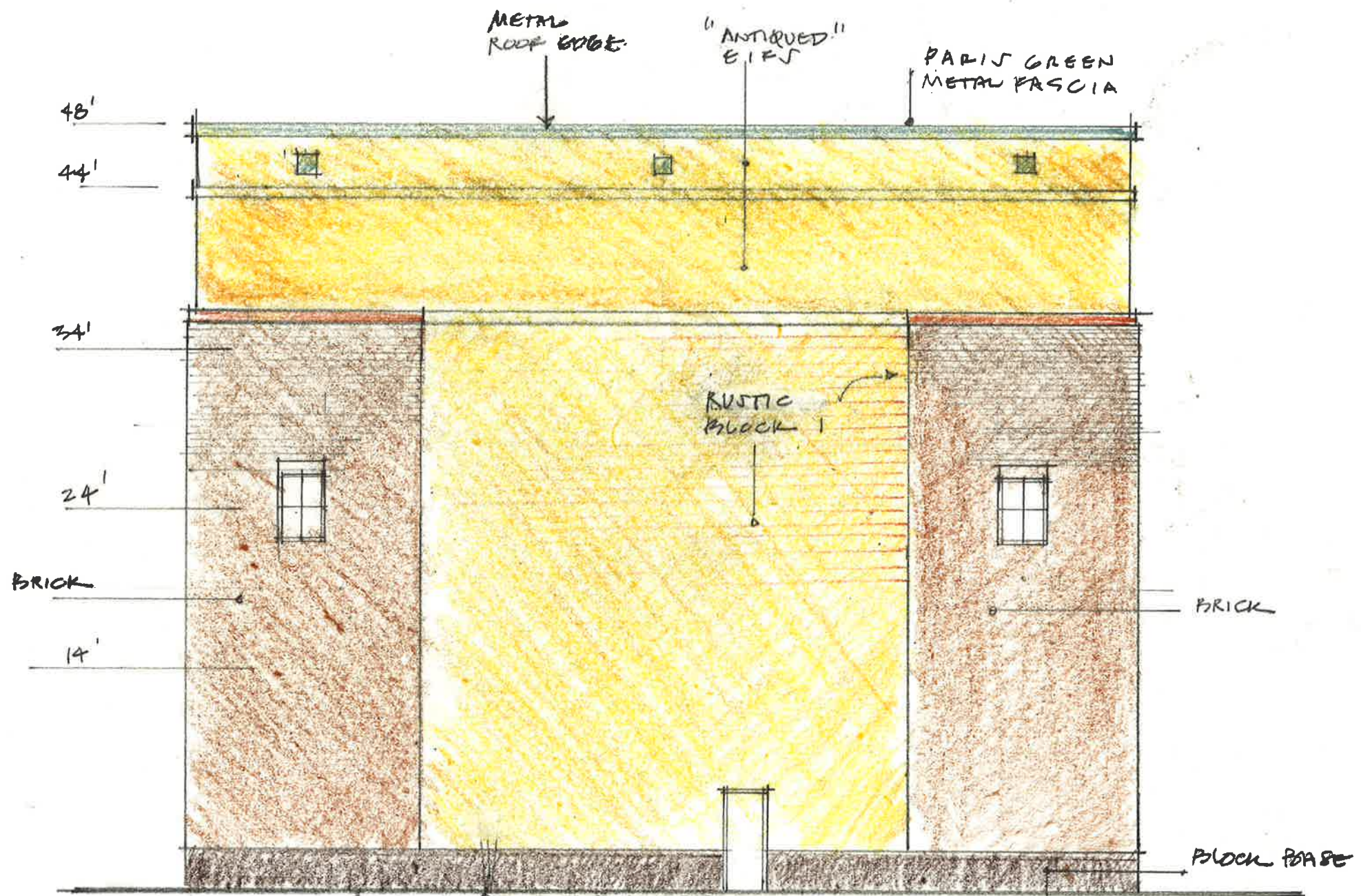


MASSETT



W. MAIN STREET CONTEXT

59%



(AT THIS ELEV.) LANDSCAPED COURT IN FOREGROUND (SEE PLAN)

BURNISHED BLOCK 2

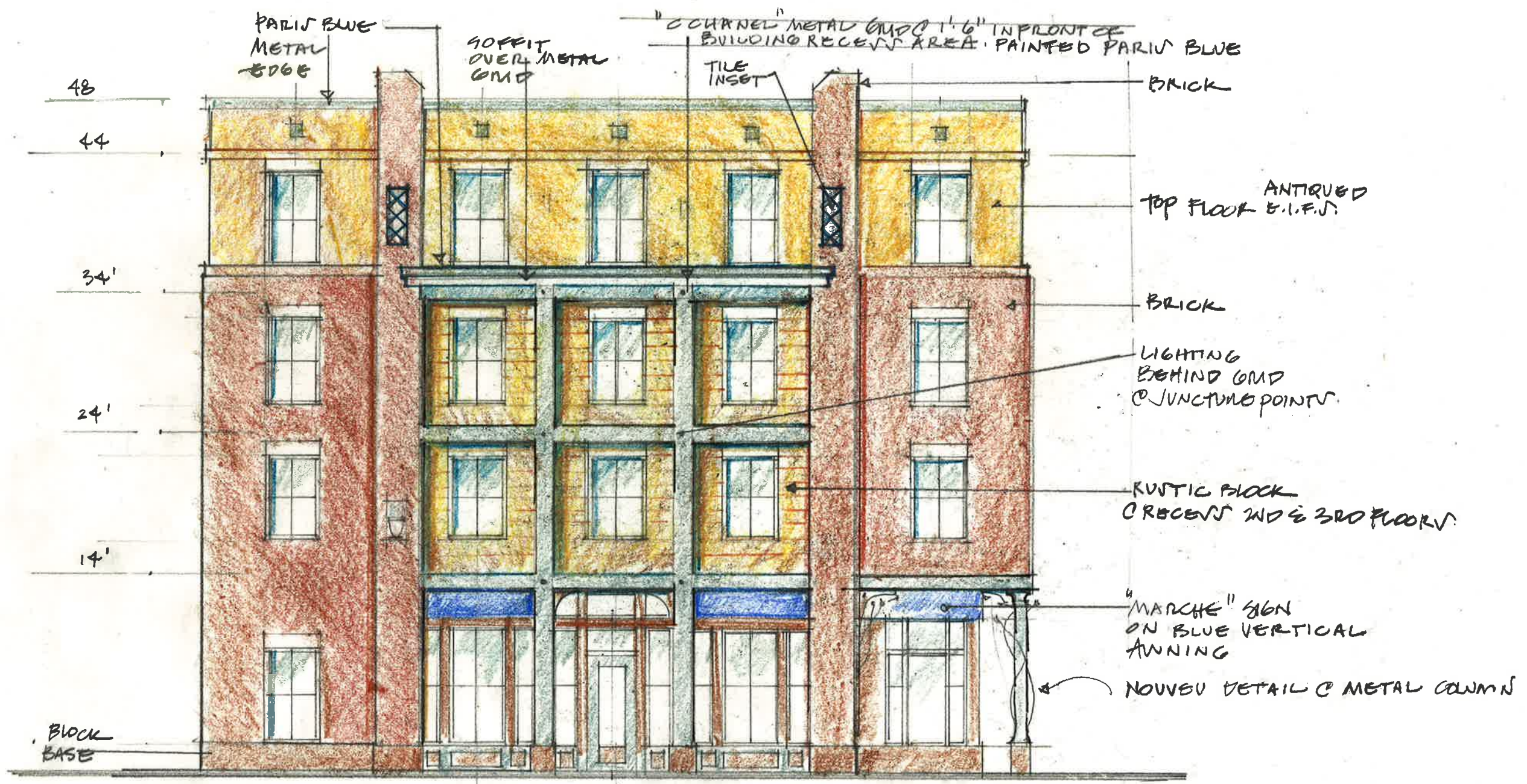
WEST ELEVATION

THE NOUVEAU



SOUTH ELEVATION
THE NOUVEAU





MAIN STREET ELEVATION

THE NOUVEAU



TILE INLAY

C CHANNEL METAL GRID PROJECTED
SUPPORT CMFL. IN FRONT OF RECESSED PORTION
OF BUILDING.

48'

44'

"ANTIQUED"
BRICK AT TOP STORY

34'

BRICK
LIGHTING BEHIND
GRID & JUNCTION POINTS

24'

CONCEALED UP/DOWN
LIGHT BEHIND JUNCTION
C METAL GRID.

14'

RUSTIC BLOCK @
RECESSED AREA OF
BUILDING

BLOCK BASE

NOUVEAU
METAL
DETAILING
@ CAST METAL
COLUMNS

VERTICAL
CANVAS
SIGN PANEL

HAUVETT STREET ELEVATION

THE NOUVEAU

