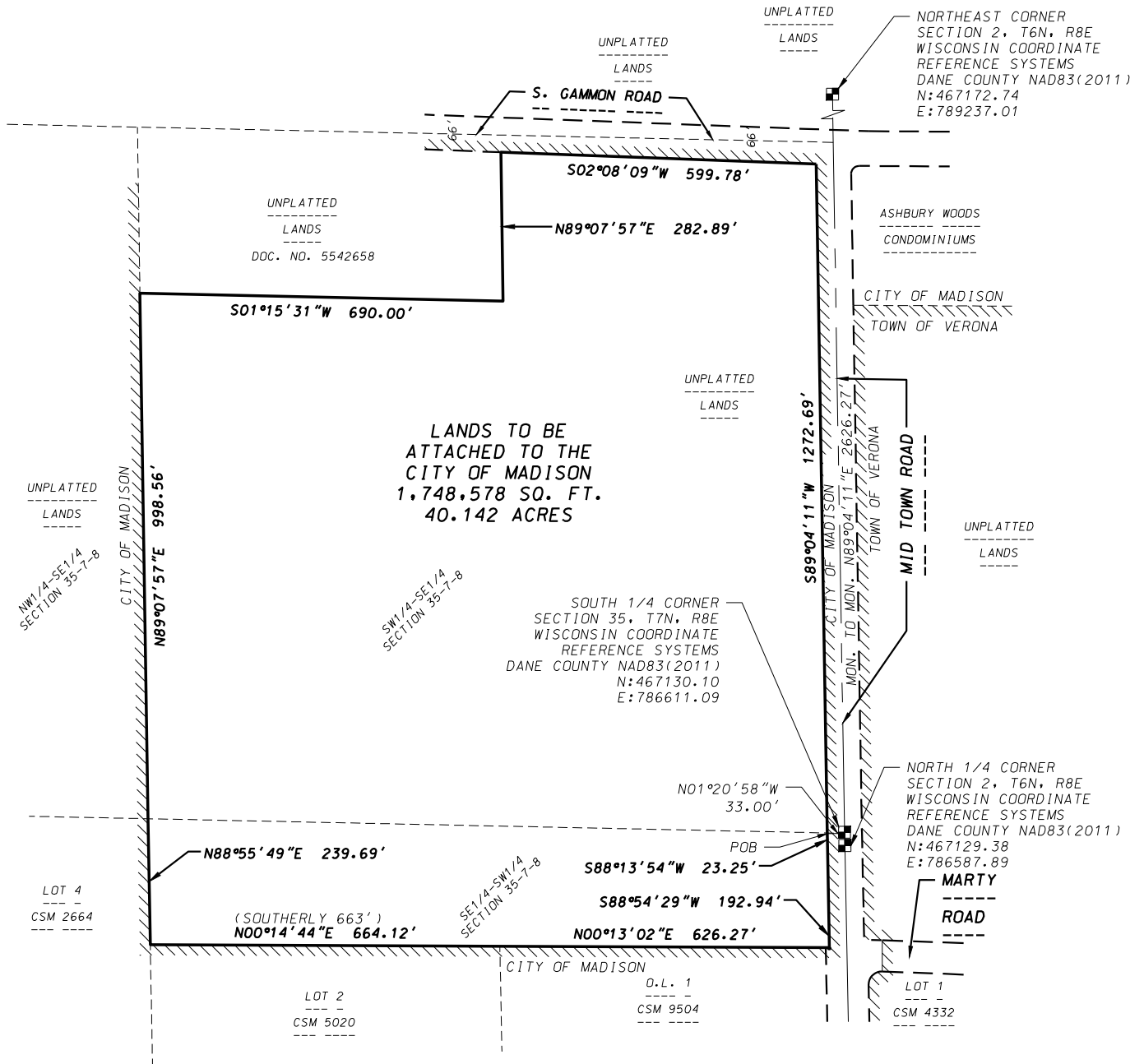


# EXHIBIT "B"

## LANDS TO BE ATTACHED TO THE CITY OF MADISON

### SCALE MAP



**LEGEND**

EXISTING CORPORATE LIMITS OF THE CITY OF MADISON



GRID NORTH  
WISCONSIN COUNTY COORDINATE  
SYSTEM (DANE ZONE)  
THE SOUTH LINE OF THE SE1/4  
OF SECTION 35, T7N, R8E

BEARS S89°04'11"E  
0 300  
  
Scale 1" = 300'

DATE: 10-06-23

F.N.: 23-07-109

**D'ONOFRIO KOTTKE AND ASSOCIATES, INC.**

7530 Westward Way, Madison, WI 53717  
Phone: 608.833.7530 • Fax: 608.833.1089  
YOUR NATURAL RESOURCE FOR LAND DEVELOPMENT