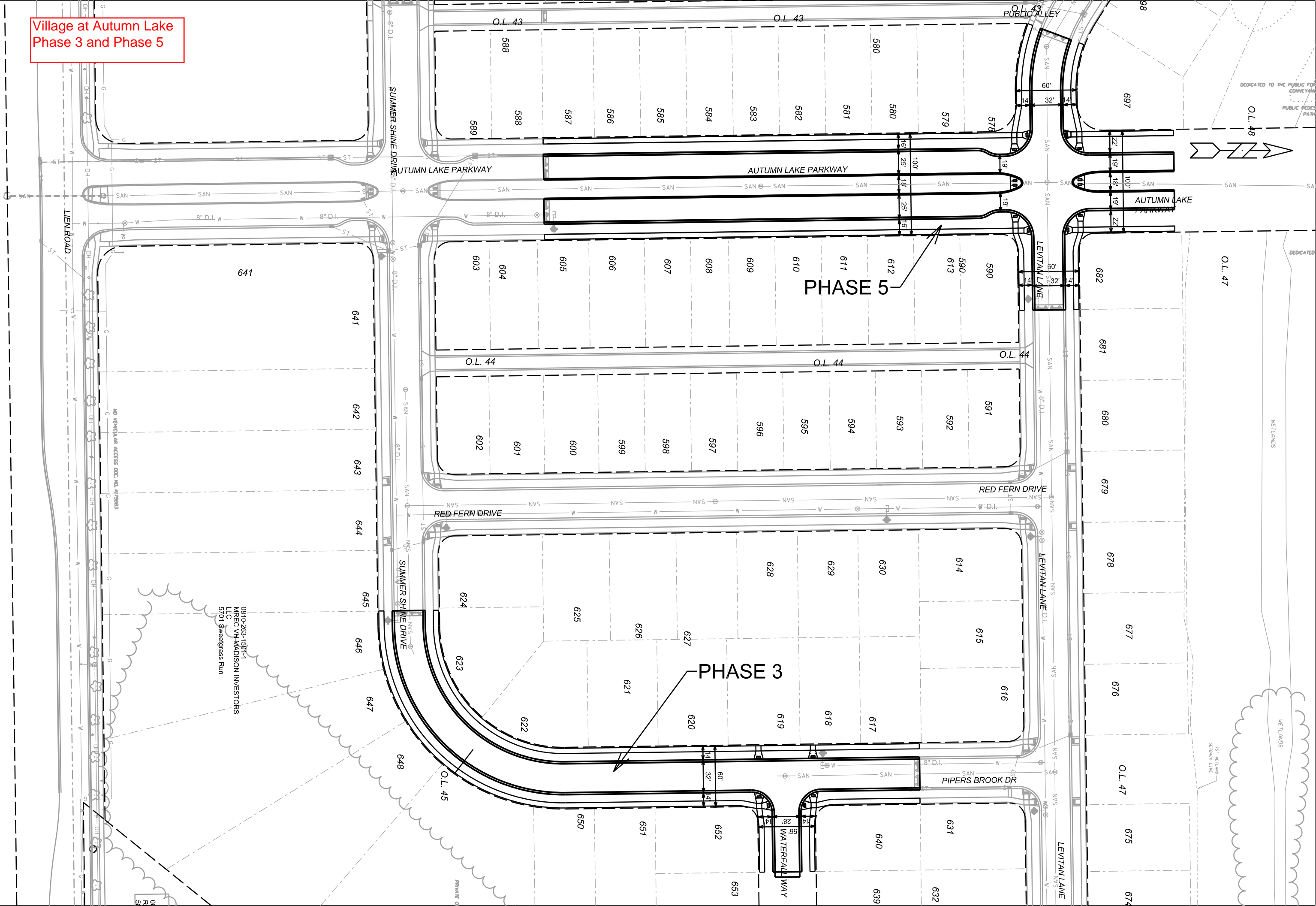


Village at Autumn Lake
Phase 3 and Phase 5



0810-263-1501-1
MREC VH MADISON INVESTORS
LLC
5701 Sweedgrass Run

NO VEHICULAR ACCESS DOC. NO. 4175683

DEDICATED TO THE PUBLIC FOR
CONVEYANCE
PUBLIC FEES PATH

DEDICATED

WETLANDS

WETLANDS

75' WETLAND
SETBACK LINE