

LOT AREA

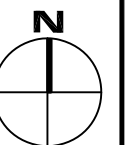
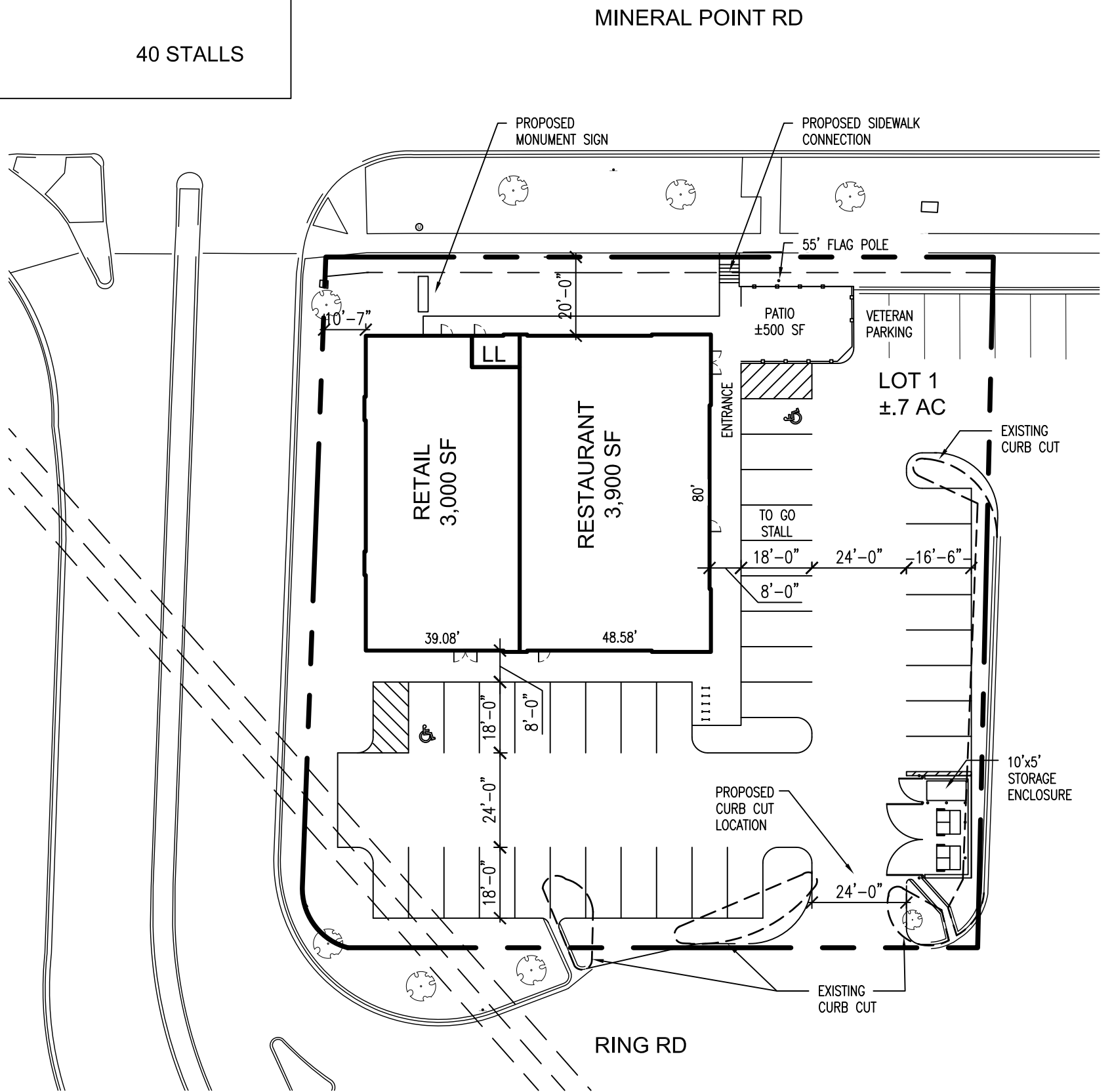
LOT 1: ±.7 ACRES

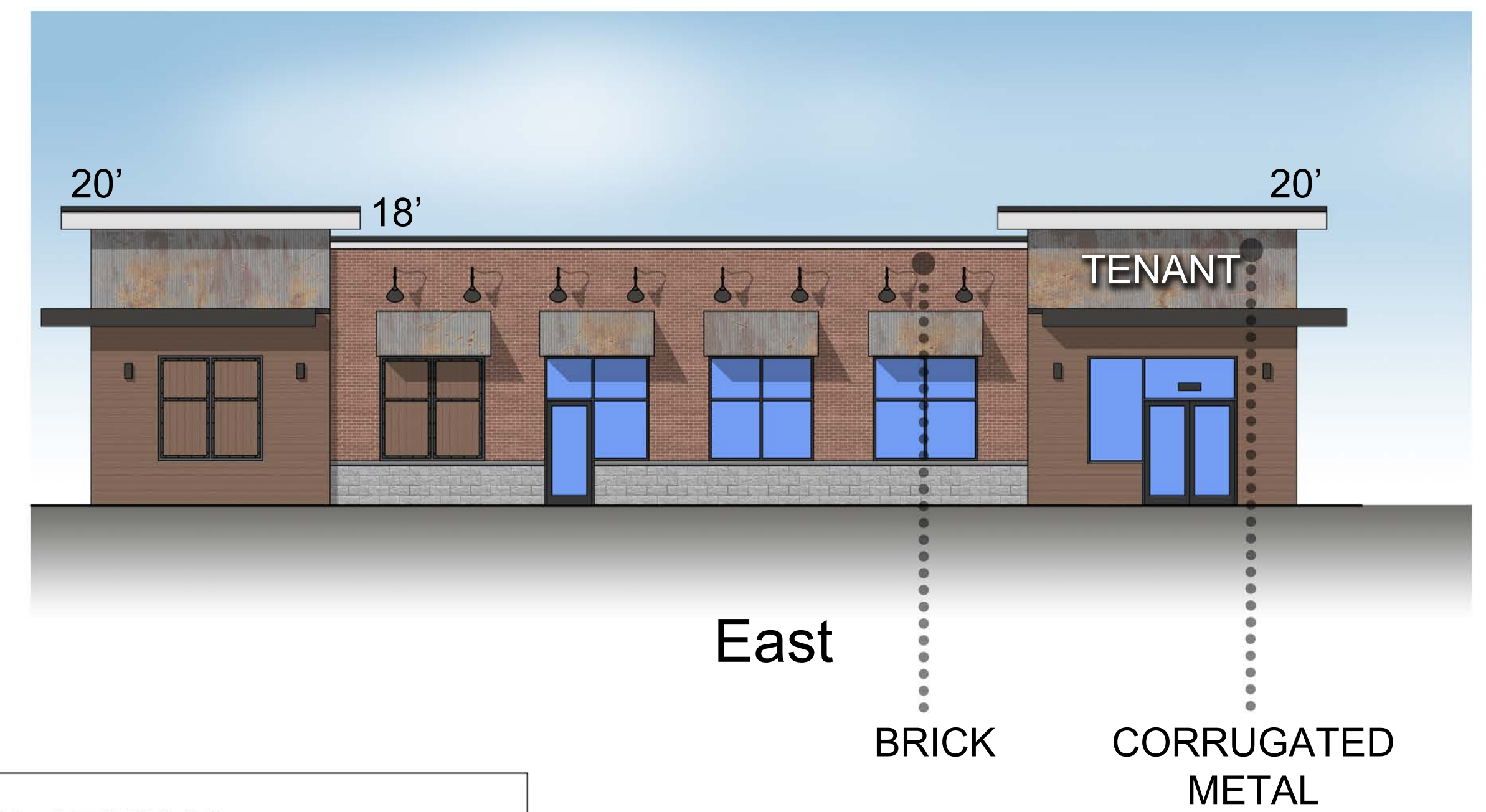
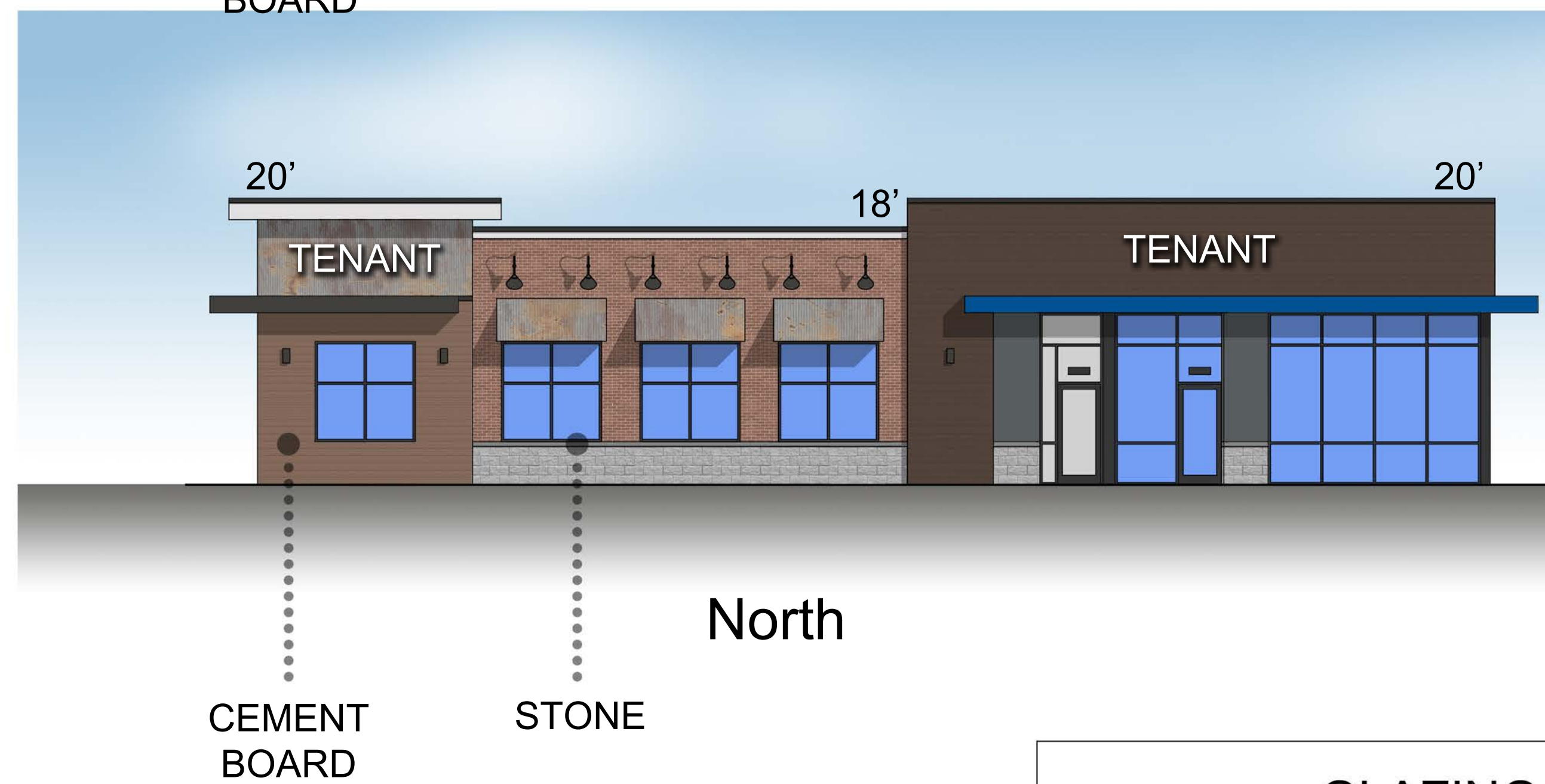
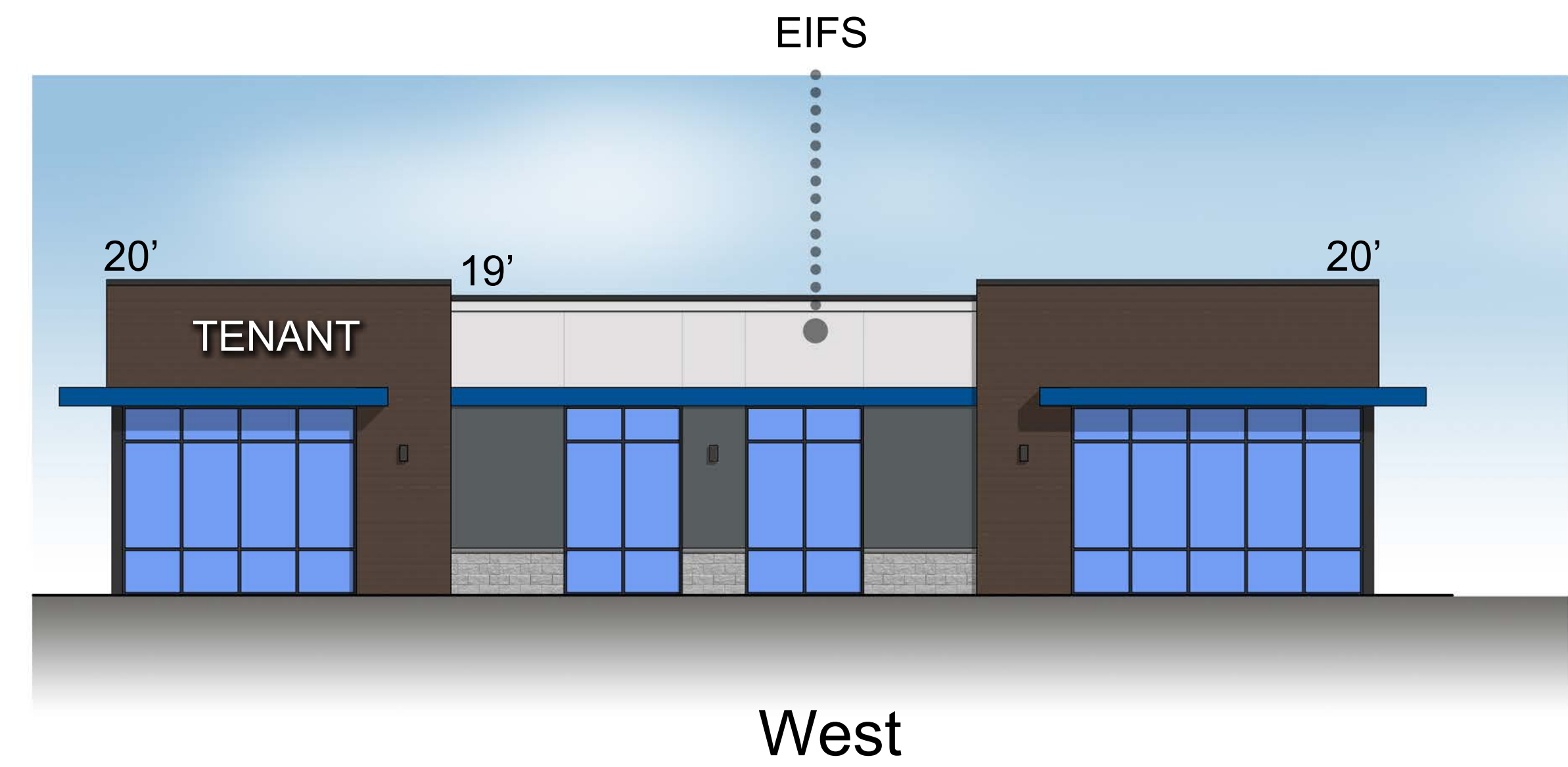
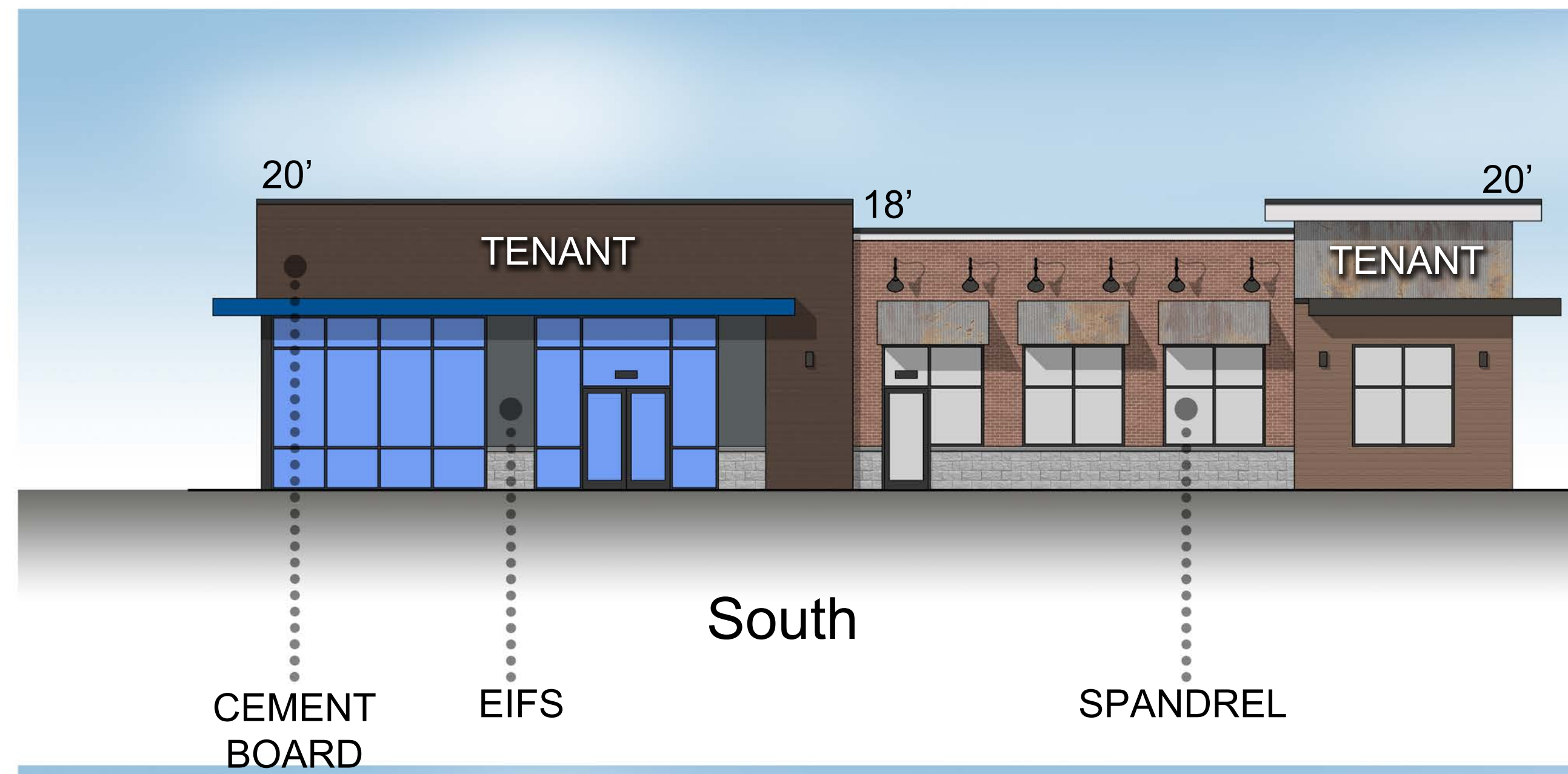
BUILDING AREAS

LOT 1	
RETAIL	3,000 SF
RESTAURANT	3,900 SF
LANDLORD ROOM	100 SF
TOTAL	7,000 SF

PARKING DATA

LOT 1: 40 STALLS

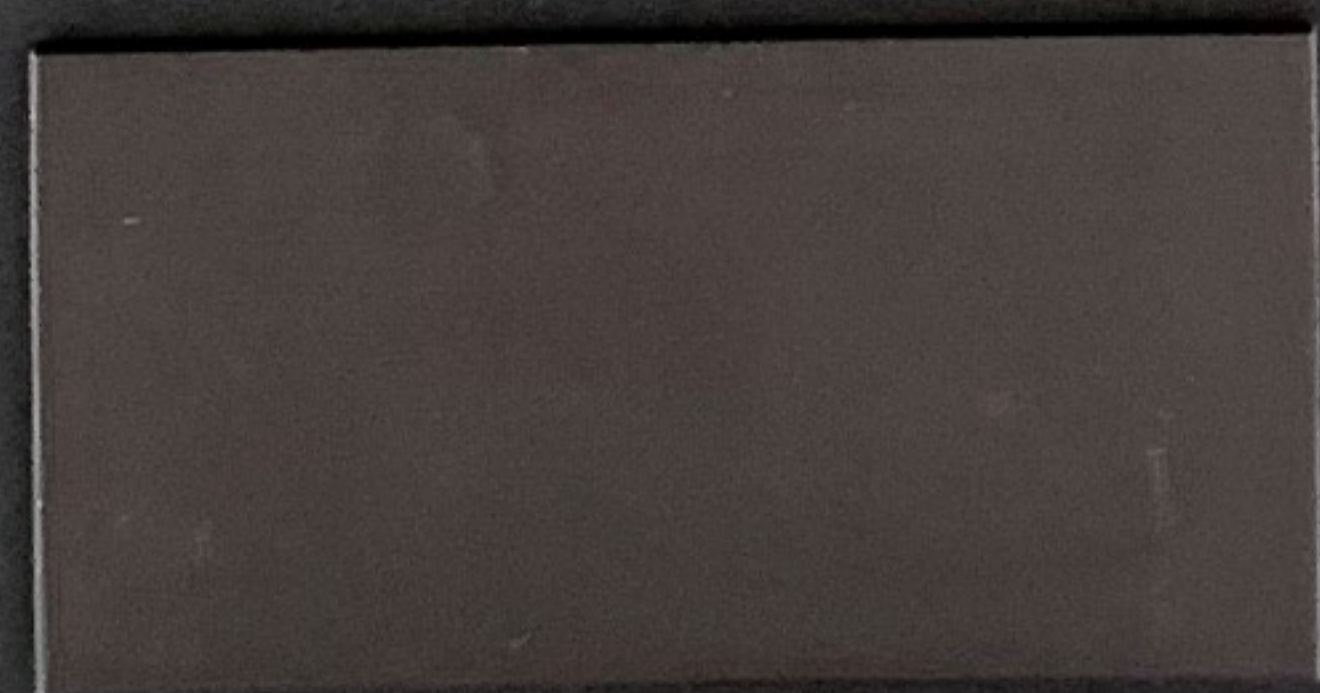
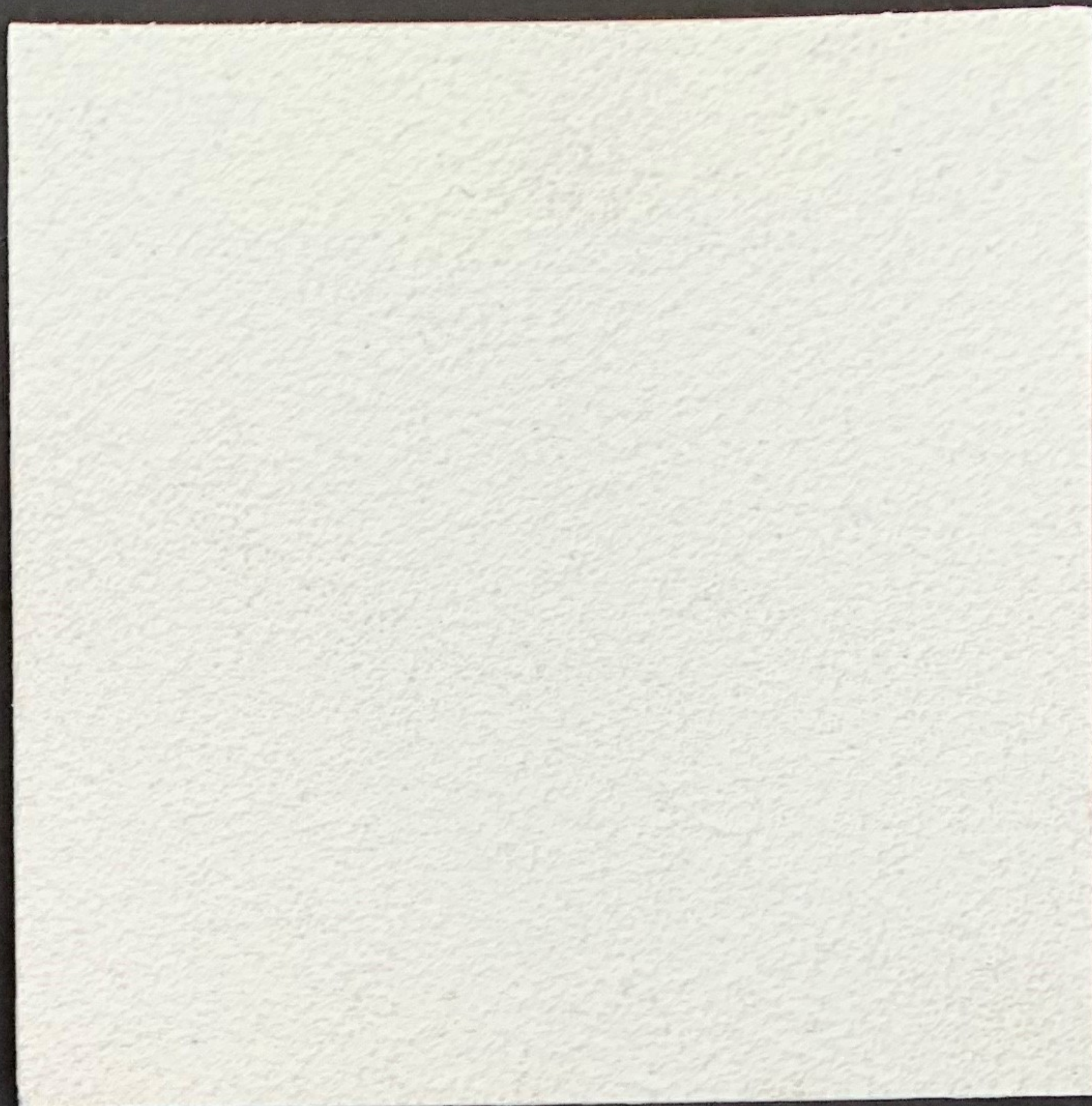




GLAZING CALCULATIONS

	GLAZING LENGTH	WALL LENGTH	GLAZING PERCENTAGE (PER LENGTH)	GLAZING AREA (SF)	WALL AREA (SF)	GLAZING PERCENTAGE (PER AREA)
NORTH	56'-2"	87'-6"	64.1%	546	1,225	44.6%
EAST	31'-0"	80'-8"	38.4%	246	1,129	21.8%
SOUTH	56'-2"	87'-6"	64.1%	546	1,225	44.6%
WEST	49'-8"	80'-0"	62.1%	596	1,120	53.2%

NOTE:
SPANDREL GLAZING AMOUNTS FOR 13.3% OF TOTAL BUILDING GLAZING AREA.



BRICKCRAFT
THE AMERICAN BRICKYARD

RAMM
Brick & Supply LLC.

Kip Ramm
Cell: 847-871-7183
E-mail: rammbrick@gmail.com

PO. BOX 514
Lisle, IL 60532

HARVEST BLEND M/S

A white tray containing 12 individual brick samples. The samples are arranged in four rows and three columns. The colors range from deep red to dark brown and grey. The top two rows feature larger bricks, while the bottom two rows feature smaller bricks. The bricks have a textured, slightly porous appearance.