

NOTE: THIS IMAGE IS AN ARTISTIC IMPRESSION ONLY AND MAY NOT EXACTLY REFLECT THE ACTUAL CONSTRUCTION AS DEFINED BY THE CONSTRUCTION DOCUMENTS

**PROJECT TEAM**

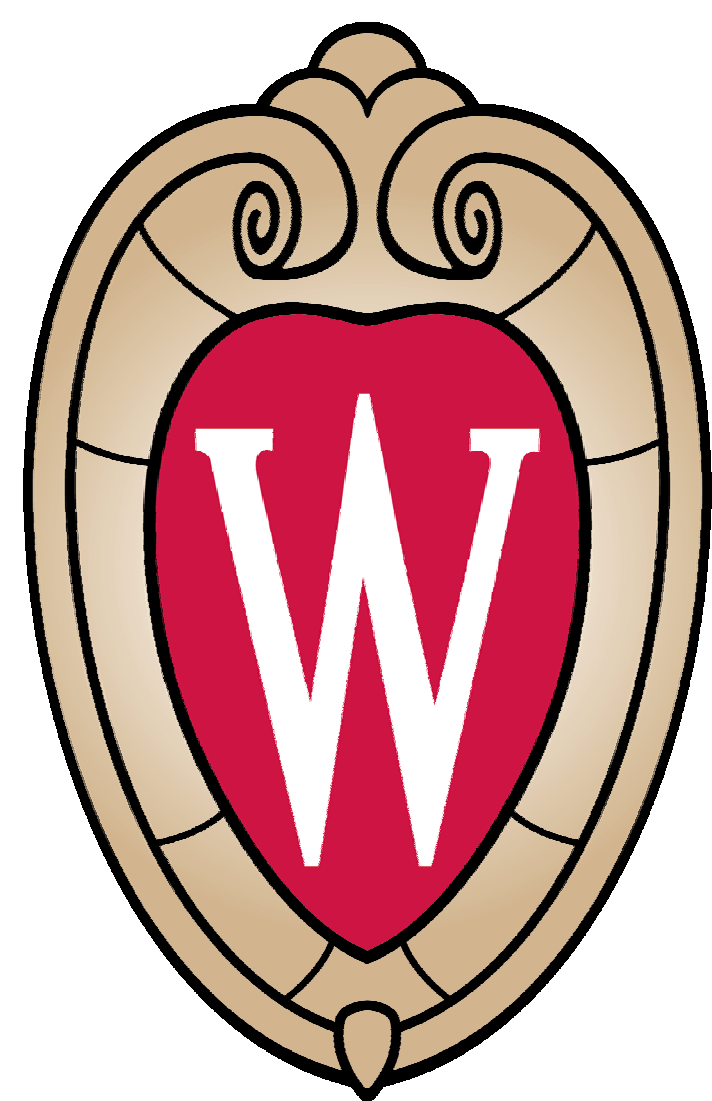
<b>OWNER</b> STATE OF WISCONSIN Division of Facilities Development 101 E. Wilson St. Madison, WI 53703-3405	<b>OCCUPANT</b> UNIVERSITY OF WISCONSIN - MADISON College of Letters and Science
<b>PRIME ARCHITECT</b> RAMLOWSTEN ARCHITECTURE + INTERIORS 322 East Michigan Street, #400 Milwaukee, Wisconsin 53202 Telephone: (414)271-8899	<b>CIVIL ENGINEER</b> KAPUR 7711 N. Port Washington Rd. Milwaukee, WI 53217 Telephone: (414) 751-7200
<b>ASSOCIATE ARCHITECT</b> SCPSA ARCHITECTS 720 SW Washington St. # 800 Portland, OR 97205 Telephone: (503) 226-1575	<b>LANDSCAPE ARCHITECTURE</b> SAKI DESIGN 1110 S. Park St. Madison, WI 53715 Telephone: (608) 261-3800
<b>STRUCTURAL ENGINEERING</b> GRAEF 1010 E. Washington Ave # 202 Madison, WI 53703 Telephone: (608) 242-1550	<b>AUDIO / VISUAL DESIGN</b> THE SHALLECK COLLABORATIVE, INC. 1553 Martin Luther King Jr. Way Berkeley, CA Telephone: (415) 956-4100
<b>HVAC ENGINEERING</b> HEAD & HUNT 2440 Deming Way Middleton, WI 53562 Telephone: (608) 273-6380	<b>ACOUSTICS</b> JAFPE HOLDEN 114A Washington St. Norwalk, CT 06854 Telephone: (203) 638-4167
<b>ELECTRICAL, FIRE ALARM, TELECOM, AND SECURITY ENGINEERING</b> HEAD & HUNT 10700 W. Research Dr. Suite 155 Milwaukee, WI 53226 Telephone: (262) 750-0232	<b>OWNER ABATEMENT CONSULTANT</b> PLACE HOLDER
<b>PLUMBING ENGINEERING</b> FIRE SUPPRESSION THUNDERBIRD ENGINEERING 1651 John Q. Hammons Dr. Suite 101 Middleton, WI 53563 Telephone: (608) 820-1201	<b>COMMISSIONING PROVIDER</b> GRUMMAN BUIKUS 1011 N. Mayfair Rd. Suite 300 Wausau, WI 53226 Telephone: (414) 476-8980

# NEW ACADEMIC BUILDING LEVY HALL UNIVERSITY OF WISCONSIN - MADISON MADISON, WISCONSIN

05/22/2023 LUA

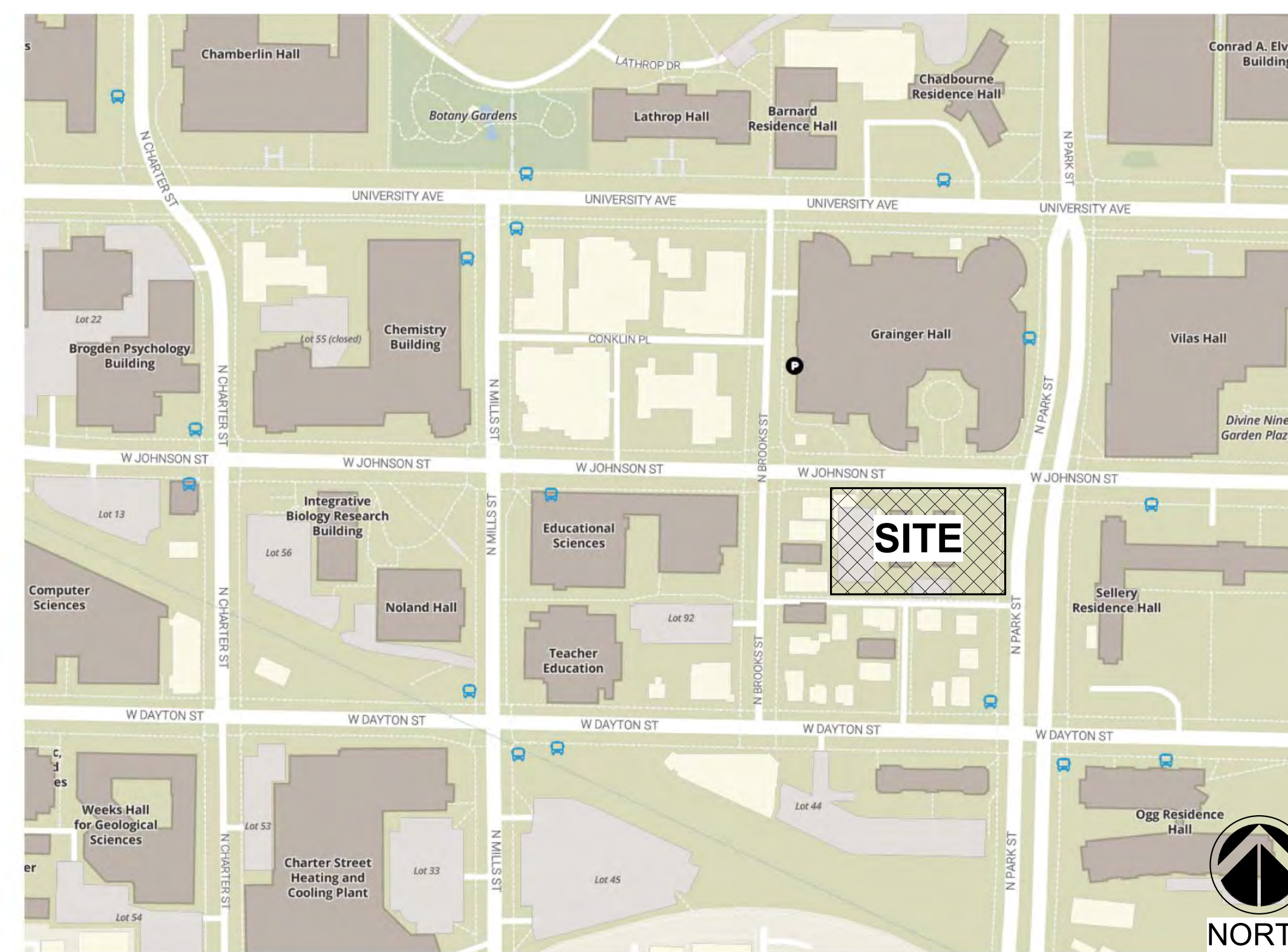
DFD PROJECT NO: 20K1G-01

UW - MADISON - COLLEGE OF LETTERS AND SCIENCE  
232 N. PARK ST.  
MADISON, WI 53715



# WISCONSIN

UNIVERSITY OF WISCONSIN-MADISON



PROJECT SITE MAP

NOTE: MULTIPLE DOCUMENTS: CONSTRUCTION DOCUMENTS FOR THIS PROJECT WILL BE ISSUED IN MULTIPLE VOLUMES. EACH CONTRACTOR SHALL BE RESPONSIBLE FOR UNDERSTANDING AND CONFIRMING SCOPE OF THE PROJECT IDENTIFIED AND DOCUMENTED IN ALL VOLUMES.



Consultant:

State of Wisconsin  
Department of Administration  
Division of Facilities Development



232 N. PARK ST.  
MADISON, WI 53715

NEW ACADEMIC BUILDING  
LEVY HALL  
UNIVERSITY OF WISCONSIN - MADISON  
MADISON, WISCONSIN

TITLE SHEET

Revisions:		
No.	Date:	Description:

Graphic Scale	Net to Scale
DFD Number	20K1G-01
Set Type	LUA
Date Issued	05/22/2023
Sheet Number	G005













































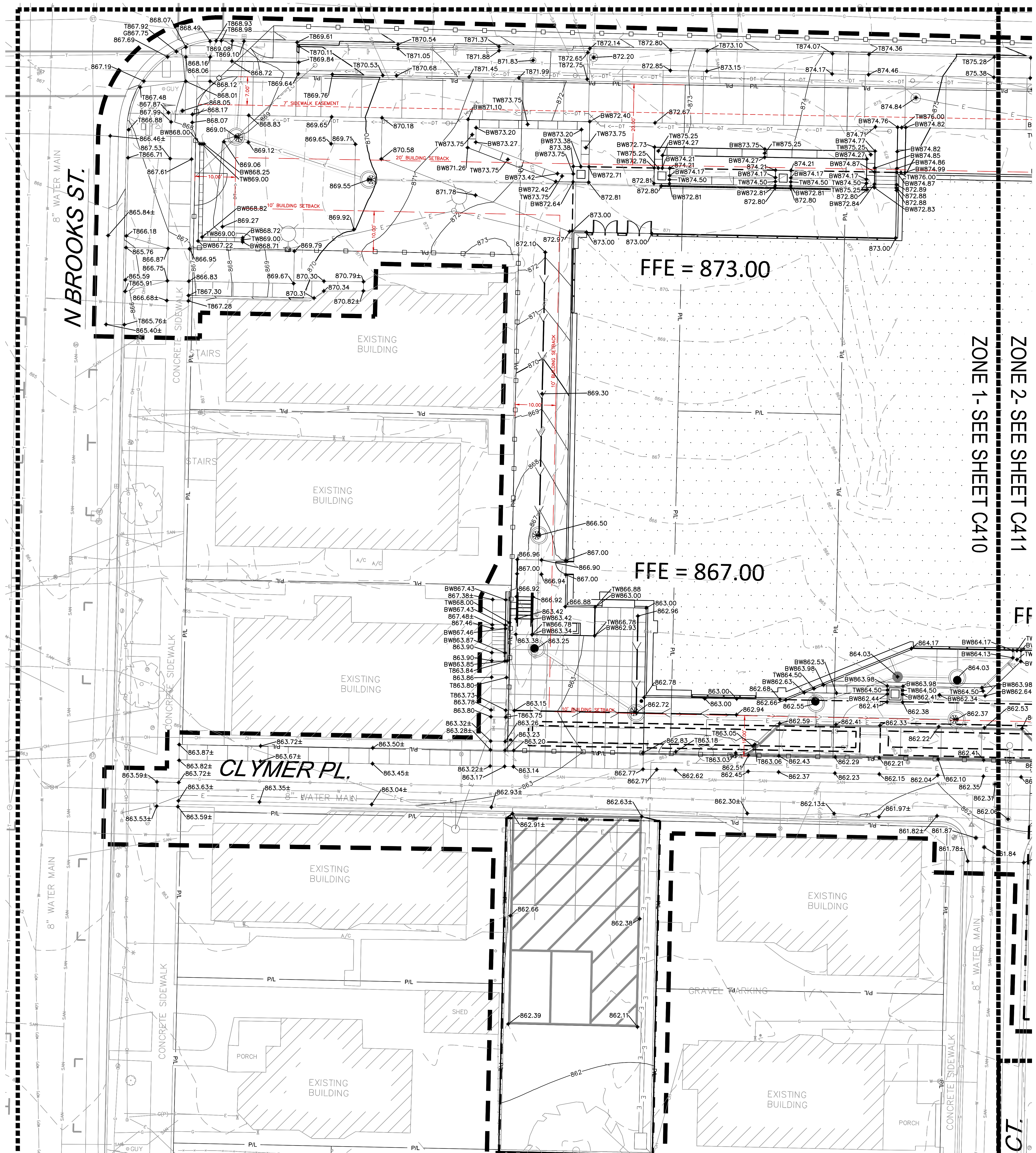




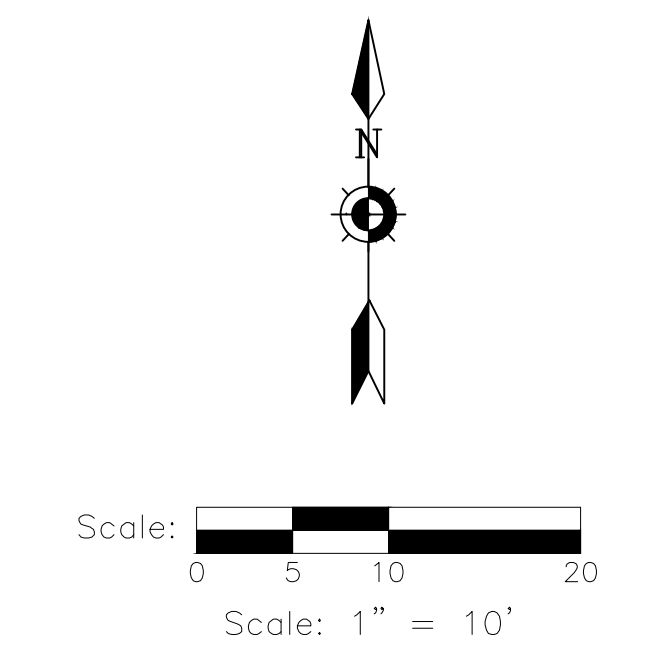
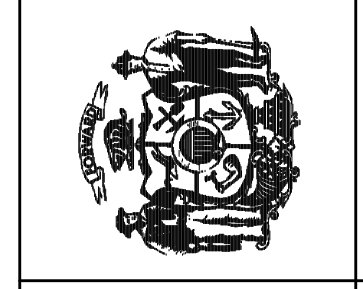








1 SITE GRADING PLAN - ZONE 1 ENLARGEMENT  
SCALE: 1"=10'-0"



**DIGGERS HOTLINE**  
Dial 811 or (800)242-8511  
www.DiggersHotline.com

**GRADING NOTES**

GENERAL CONTRACTOR OR THEIR SUB CONTRACTORS ARE RESPONSIBLE FOR VERIFYING OWNERSHIP OF AND COORDINATING THE DEMOLITION AND / OR RELOCATION / ELEVATION ADJUSTMENT OF ALL EXISTING PUBLIC OR PRIVATE UTILITIES WITHIN THE PROJECT LIMITS THAT MAY BE AFFECTED BY TOPOGRAPHICAL CHANGES, UTILITIES, OR OTHER PROPOSED CONSTRUCTION ON THE PROJECT, INCLUDING BUT NOT LIMITED TO ELECTRICAL / FIBER OPTIC / TELEPHONE / CABLE / GAS / WATER / SANITARY / STORM. DEMOLITION / RELOCATION OF THIS UTILITY WORK MUST BE IN ACCORDANCE WITH ALL STATE, FEDERAL, LOCAL, AND UTILITY OWNER REGULATIONS.

**KEY INDEX**

- PROJECT LIMITS
- - - EXISTING CONTOUR MINOR
- - - EXISTING CONTOUR MAJOR
- PROPOSED CONTOUR MINOR
- PROPOSED CONTOUR MAJOR
- ◆ 870.00 PROPOSED SPOT GRADE
- ◆ 870.0± MATCH EXISTING GRADE
- ◆ 870.0± PROPOSED TOP OF CURB GRADE, REFER TO SITE LAYOUT PLANS FOR MORE INFORMATION, GUTTER IS 4" BELOW TOP OF CURB UNLESS OTHERWISE NOTED.
- ◆ 870.0± MATCH EXISTING TOP OF CURB GRADE
- ◆ 870.00 PROPOSED TOP OF WALL
- ◆ 870.00 PROPOSED BOTTOM OF WALL

Revisions:

No.	Date	Description

Graphic Scale	0 2.5 5 10 15'
DFD Number	20K1G-01
Set Type	LUA
Date Issued	05/22/2023
Sheet Number	C410

















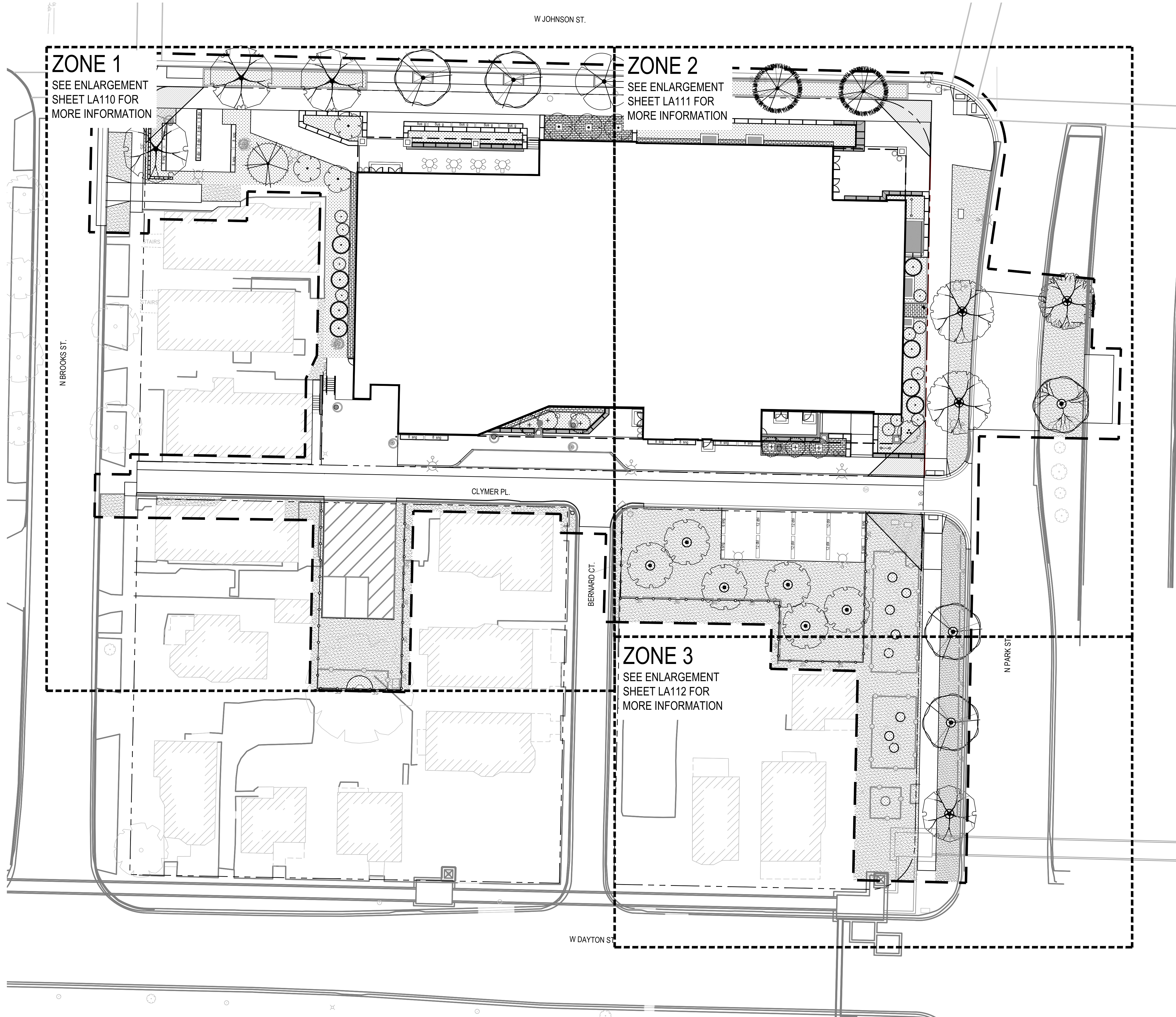






**NOTES**

- FIELD VERIFY SURVEY INFORMATION PRIOR TO START OF CONSTRUCTION AND REPORT ANY DISCREPANCIES TO THE DFD CONSTRUCTION REPRESENTATIVE.
- CONTACT DIGGER'S HOTLINE, CITY OF MADISON, AND UW-MADISON TO LOCATE ALL PUBLIC AND PRIVATE UTILITIES PRIOR TO STARTING WORK.
- FIELD VERIFY ALL EXISTING SITE CONDITIONS AND UTILITIES PRIOR TO STARTING WORK. ANY DAMAGE CAUSED TO UTILITIES, EITHER SHOWN OR NOT, SHALL BE REPAIRED AND PAID FOR AT THE CONTRACTOR'S EXPENSE.
- PROTECT OR RELOCATE ALL BENCHMARKS. RELOCATED BENCHMARKS TO BE INCLUDED WITH CONTRACTOR.
- PROTECT ALL EXISTING PAVEMENTS, CURBS, UTILITIES, AND OTHER IMPROVEMENTS (TO REMAIN) FROM CONSTRUCTION ACTIVITIES. RESTORE ALL AREAS DISTURBED BY CONSTRUCTION RELATED ACTIVITIES TO EXISTING CONDITIONS AT COMPLETION OF WORK UNLESS SHOWN OTHERWISE ON PLANS.
- SUBMIT TOPSOIL TESTING REQUIREMENTS PER SECTION 32 91 13 SOIL PREPARATION.
- VERIFY THAT SPECIFIED TOPSOIL AND PLANTING MIXTURE DEPTHS ARE PRESENT PRIOR TO PLANTING PER SECTIONS 32 91 13 SOIL PREPARATION. NOTIFY DFD CONSTRUCTION REPRESENTATIVE OF ANY PROBLEMS.
- SPACE PLANTINGS PER PLANT SCHEDULE.
- ALL WRAPPINGS, WIRE BASKETS, BURLAP, AND OTHER MISCELLANEOUS MATERIAL SHALL BE COMPLETELY REMOVED FROM ALL SHRUB AND TREE ROOT BALLS PRIOR TO INSTALLATION.
- ALL EXISTING LAWN AREAS WITHIN AND ADJACENT TO THE PROJECT SITE THAT ARE DISTURBED BY CONSTRUCTION ACTIVITIES INCLUDING, BUT NOT LIMITED TO, UTILITY TRENCHING, ACCESS, OR MATERIALS STORAGE SHALL BE REPAIRED WITH SOD PER SECTION 32 92 23 SODDING.
- APPLY MYCHROIZAL FUNGI TO ALL PLANTINGS PER SECTION 32 92 00 PLANTS.
- CONTRACTOR SHALL TAKE PRECAUTIONS DURING CONSTRUCTION TO NOT DISFIGURE, SCAR, OR IMPAIR THE HEALTH OF ANY STREET TREE. CONTRACTOR SHALL OPERATE EQUIPMENT IN A MANNER AS TO NOT DAMAGE THE BRANCHES OF THE STREET TREE(S). THIS MAY REQUIRE USING SMALLER EQUIPMENT AND LOADING AND UNLOADING MATERIALS IN A DESIGNATED SPACE AWAY FROM TREES ON THE CONSTRUCTION SITE. ANY DAMAGE OR INJURY TO EXISTING STREET TREES (EITHER ABOVE OR BELOW GROUND) SHALL BE REPORTED IMMEDIATELY TO CITY FORESTRY AT (608) 266-4816. PENALTIES AND REMEDIATION SHALL BE REQUIRED.
- AS DEFINED BY THE SECTION 107.13 OF CITY OF MADISON STANDARD SPECIFICATIONS FOR PUBLIC WORKS CONSTRUCTION: NO EXCAVATION IS PERMITTED WITHIN 5 FEET OF THE TRUNK OF THE STREET TREE OR WHEN CUTTING ROOTS OVER 3 INCHES IN DIAMETER. IF EXCAVATION IS NECESSARY, THE CONTRACTOR SHALL CONTACT MADISON CITY FORESTRY AT (608) 266-4816 PRIOR TO EXCAVATION. CITY OF MADISON FORESTRY PERSONNEL SHALL ASSESS THE IMPACT TO THE TREE AND TO ITS ROOT SYSTEM PRIOR TO WORK COMMENCING. TREE PROTECTION SPECIFICATIONS CAN BE FOUND ON THE FOLLOWING WEBSITE: [HTTPS://WWW.CITYOFMADISON.COM/BUSINESS/PW/SPECS.CFM](https://www.cityofmadison.com/business/pw/specs.cfm).
- SECTION 107.13(G) OF CITY OF MADISON STANDARD SPECIFICATIONS FOR PUBLIC WORKS CONSTRUCTION (WEBSITE: [HTTPS://WWW.CITYOFMADISON.COM/BUSINESS/PW/SPECS.CFM](https://www.cityofmadison.com/business/pw/specs.cfm)) ADDRESSES SOIL COMPACTION NEAR STREET TREES AND SHALL BE FOLLOWED BY CONTRACTOR. THE STORAGE OF PARKED VEHICLES, CONSTRUCTION EQUIPMENT, BUILDING MATERIALS, REFUSE, EXCAVATED SPOILS OR DUMPING OF POISONOUS MATERIALS ON OR AROUND TREES AND ROOTS WITHIN FIVE (5) FEET OF THE TREE OR WITHIN THE PROTECTION ZONE IS PROHIBITED.
- STREET TREE PRUNING SHALL BE COORDINATED WITH CITY FORESTRY AT A MINIMUM OF TWO WEEKS PRIOR TO THE START OF CONSTRUCTION FOR THIS PROJECT. CONTACT CITY FORESTRY AT (608)266-4816. ALL PRUNING SHALL FOLLOW THE AMERICAN NATIONAL STANDARDS INSTITUTE (ANSI) A300 - PART 1 STANDARDS FOR PRUNING.
- CONTRACTOR SHALL CONTACT CITY FORESTRY AT (608) 266-4816 TO SCHEDULE INSPECTION AND APPROVAL OF NURSERY TREE STOCK AND REVIEW PLANTING SPECIFICATIONS WITH THE LANDSCAPER AT LEAST ONE WEEK PRIOR TO STREET TREE PLANTING.
- NO LATER THAN FIVE BUSINESS DAYS PRIOR TO FORMING CONCRETE AND CONSTRUCTING TREE GRATE SITES, THE CONTRACTOR SHALL CONTACT CITY FORESTRY AT (608) 266-4816 TO IDENTIFY AND LOCATE UNDERGROUND CONFLICTS (UTILITIES, WALLS, CONDUIT) OR OTHER UNDERGROUND OBSTRUCTIONS AND DETERMINE GRATE LOCATIONS. THE CONTRACTOR WILL BE REQUIRED TO OBTAIN THE GRATE, MATCHING FRAME AND/OR TREE GUARD. TREE GRATE TYPE AND MATCHING FRAME: NENAH 4X8 (R-8815-A), TREE GUARD NENAH (R-8501-4818).
- CITY FORESTRY WILL ISSUE A STREET TREE REMOVAL PERMIT FOR SIX TREES: ONE 2" OAK & ONE 2" ELM WITHIN WEST SIDE OF NORTH PARK STREET TERRACE, TWO 5" CRABAPPLES, ONE 4" CRABAPPLE & ONE 14" ELM WITHIN THE CENTER MEDIAN OF NORTH PARK STREET DUE TO UNDERGROUND UTILITY INSTALLATION. THE CONTRACTOR SHALL CONTACT CITY FORESTRY AT (608) 266-4816 TO OBTAIN PERMIT
- ANY ADDITIONAL STREET TREE REMOVALS REQUESTED WILL REQUIRE A MINIMUM OF A 72-HOUR REVIEW PERIOD WHICH SHALL INCLUDE THE NOTIFICATION OF THE ALDERPERSON WITHIN WHO'S DISTRICT IS AFFECTED BY THE STREET TREE REMOVAL(S) PRIOR TO AN ADDITIONAL STREET TREE REMOVAL PERMIT BEING ISSUED BY CITY FORESTRY.
- CONTACT UW-MADISON CAMPUS REPRESENTATIVE A MINIMUM OF 5 DAYS PRIOR TO ANTICIPATED PRUNING OF ANY TREES TO SCHEDULE A REVIEW & CONSULTATION WITH CAMPUS GROUNDS STAFF PRIOR TO PERFORMING ANY PRUNING.



**LEGEND**

- 1 SALVAGED LIMESTONE PAVER MAINTENANCE EDGE, SEE DETAIL 10/LA500
- 2 SALVAGED LIMESTONE PAVERS WITH PLANTED PLUGS, SEE DETAIL 8/LA500
- 3 MIXED PLANTING BED WITH 3" DEPTH TWICE SHREDDED HARDWOOD BARK MULCH
- 4 SOD
- 5 4' DIAMETER TREE MULCH RING WITH 3" DEPTH TWICE SHREDDED HARDWOOD BARK MULCH
- CONSTRUCTION LIMITS
- PROPERTY LINE R.O.W.
- TREE PROTECTION FENCE
- CONSTRUCTION FENCING
- LIGHT POLES
- INLETS

**City of Madison Landscape Worksheet**  
232 North Park Street  
May 22, 2023  
Campus-Institutional District

Developed Lots	SF	Minimum Open Space Required (SF)	Landscape Units Required	Landscape Points Subtotal
Total Developed Area	24,291	n/a	81	405
			Landscape Points Required	405

Development Frontage - North Park Street	LF	Overstory Tree Req. (or x2 for Orn./Evrgrn. Tree Sub.)	Shrubs Required
Total LF of Street Frontage Between Bldg./Parking & Streets	130	4	22

Element	Point Value	Quantity Proposed	Quantity Existing	Points Achieved
Overstory Deciduous Tree	35	0	0	0
Ornamental Tree	15	0	0	0
Evergreen Tree	15	8	0	120
Shrub, deciduous	2	0	0	0
Shrub, evergreen	3	10	0	30
Ornamental Grasses/Perennials	2	123	0	246
Ornamental/Decorative Fence or Wall (4 pts/10 LF)	4	0	0	0
<b>Development Frontage Points Total</b>				<b>396</b>

Development Frontage - West Johnson Street	LF	Overstory Tree Req. (or x2 for Orn./Evrgrn. Tree Sub.)	Shrubs Required
Total LF of Street Frontage Between Bldg./Parking & Streets	345	12	58

Element	Point Value	Quantity Proposed	Quantity Existing	Points Achieved
Overstory Deciduous Tree	35	0	0	0
Ornamental Tree	15	6	0	90
Evergreen Tree	15	0	0	0
Shrub, deciduous	2	28	0	56
Shrub, evergreen	3	11	0	33
Ornamental Grasses/Perennials	2	740	0	1480
Ornamental/Decorative Fence or Wall (4 pts/10 LF)	4	0	0	0
<b>Development Frontage Points Total</b>				<b>1659</b>

Development Frontage - Clymer Place	LF	Overstory Tree Req. (or x2 for Orn./Evrgrn. Tree Sub.)	Shrubs Required
Total LF of Street Frontage Between Bldg./Parking & Streets	266	9	44

Element	Point Value	Quantity Proposed	Quantity Existing	Points Achieved
Overstory Deciduous Tree	35	0	0	0
Ornamental Tree	15	7	0	105
Evergreen Tree	15	3	0	45
Shrub, deciduous	2	0	0	0
Shrub, evergreen	2	3	0	6
Ornamental Grasses/Perennials	2	256	0	512
Ornamental/Decorative Fence or Wall (4 pts/10 LF)	4	0	0	0
<b>Development Frontage Points Total</b>				<b>688</b>

Interior Parking Lots	N/A			
Total Parking Lot Area	n/a			

General Site, Foundation, Screening	Point Value	Quantity Proposed	Quantity Existing	Points Achieved
Overstory Deciduous Tree	35	7	0	245
Ornamental Tree	15	0	0	0
Evergreen Tree	15	9	0	135
Shrub, deciduous	2	80	0	160
Shrub, evergreen	3	11	0	33
Ornamental Grasses/Perennials	2	77	0	154
Ornamental/Decorative Fence or Wall (4 pts/10 LF)	4	0	0	0
<b>General Site Plantings Total</b>				<b>727</b>

<b>TOTAL LANDSCAPE POINTS</b>	<b>3450</b>
-------------------------------	-------------

consultant:

Abbie Madison  
LA-673  
Madison  
Wisconsin

*Alaine Molien*  
5/10/2023

State of Wisconsin  
Department of Administration  
Division of Facilities Development

NEW ACADEMIC BUILDING  
LEVY HALL  
UNIVERSITY OF WISCONSIN - MADISON  
MADISON, WISCONSIN

232 N. PARK ST.  
MADISON, WI 53715

LANDSCAPE PLAN - OVERALL

Revisions:		
No.	Date	Description

Graphic Scale: 1" = 20'

PDF Number: 20K1G-01

Set Type: LUA

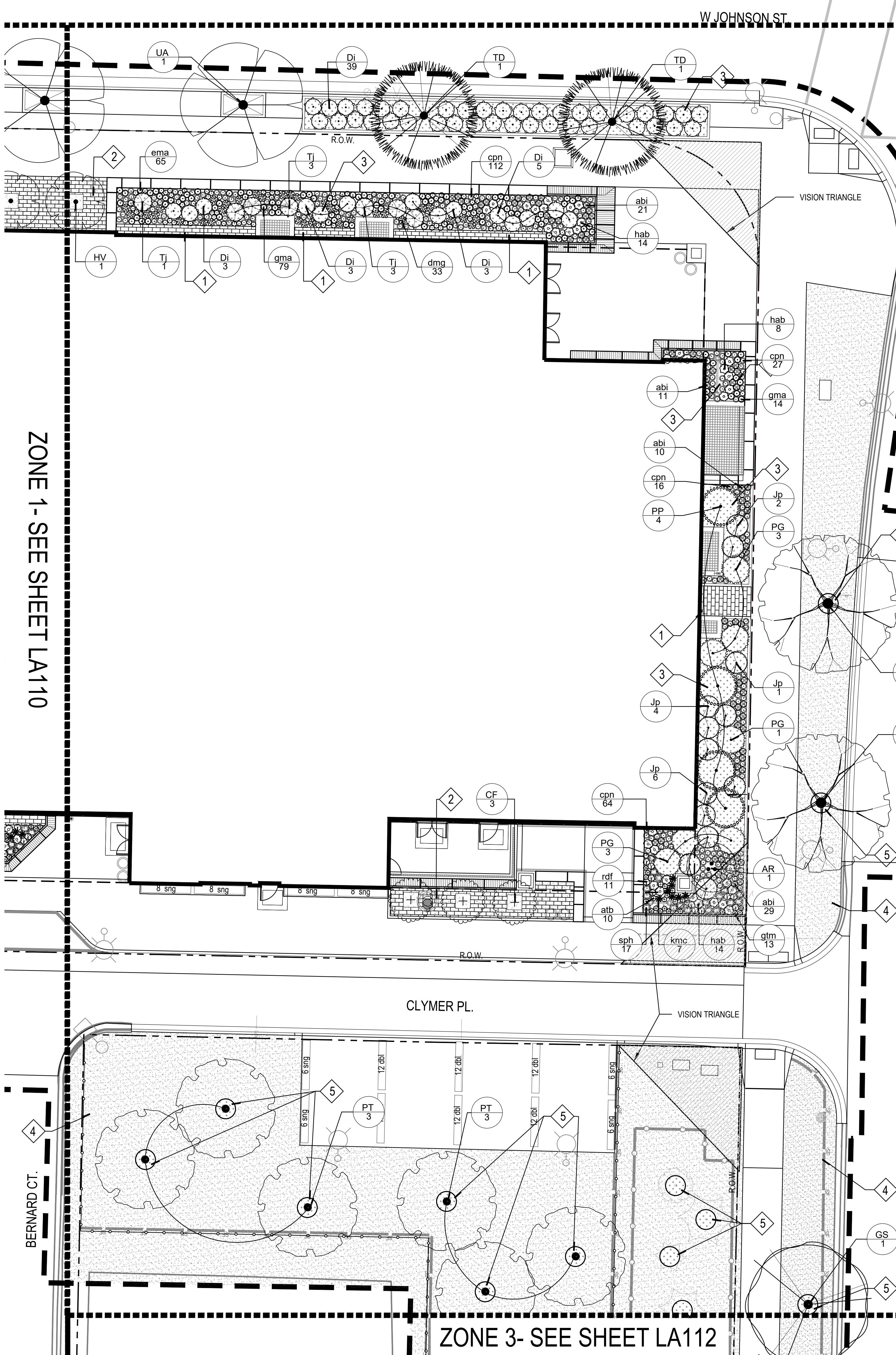
Date Issued: 05/22/2023

Sheet Number: LA100









### NOTES

1. FIELD VERIFY SURVEY INFORMATION PRIOR TO START OF CONSTRUCTION AND REPORT ANY DISCREPANCIES TO THE DFDM CONSTRUCTION REPRESENTATIVE.
2. CONTACT DIGGER'S HOTLINE, CITY OF MADISON, AND UW-MADISON TO LOCATE ALL PUBLIC AND PRIVATE UTILITIES PRIOR TO STARTING WORK.
3. FIELD VERIFY ALL EXISTING SITE CONDITIONS AND UTILITIES PRIOR TO STARTING WORK. ANY DAMAGE CAUSED TO UTILITIES, EITHER SHOWN OR NOT, SHALL BE REPAIRED AND PAID FOR AT THE CONTRACTOR'S EXPENSE.
4. PROTECT OR RELOCATE ALL BENCHMARKS. RELOCATED BENCHMARKS TO BE INCLUDED WITH CONTRACTOR.
5. PROTECT ALL EXISTING PAVEMENTS, CURBS, UTILITIES, AND OTHER IMPROVEMENTS (TO REMAIN) FROM CONSTRUCTION ACTIVITIES. RESTORE ALL AREAS DISTURBED BY CONSTRUCTION RELATED ACTIVITIES TO EXISTING CONDITIONS AT COMPLETION OF WORK UNLESS SHOWN OTHERWISE ON PLANS.
6. SUBMIT TOPSOIL TESTING REQUIREMENTS PER SECTION 32 91 13 SOIL PREPARATION.
7. VERIFY THAT SPECIFIED TOPSOIL AND PLANTING MIXTURE DEPTHS ARE PRESENT PRIOR TO PLANTING PER SECTIONS 32 91 13 SOIL PREPARATION. NOTIFY DFD CONSTRUCTION REPRESENTATIVE OF ANY PROBLEMS.
8. SPACE PLANTINGS PER PLANT SCHEDULE.
9. ALL WRAPPINGS, WIRE BASKETS, BURLAP, AND OTHER MISCELLANEOUS MATERIAL SHALL BE COMPLETELY REMOVED FROM ALL SHRUB AND TREE ROOT BALLS PRIOR TO INSTALLATION.
10. ALL EXISTING LAWN AREAS WITHIN AND ADJACENT TO THE PROJECT SITE THAT ARE DISTURBED BY CONSTRUCTION ACTIVITIES INCLUDING, BUT NOT LIMITED TO, UTILITY TRENCHING, ACCESS, OR MATERIALS STORAGE SHALL BE REPAIRED WITH SOD PER SECTION 32 92 23 SODDING.
11. APPLY MYCHROIZAL FUNGI TO ALL PLANTINGS PER SECTION 32 92 00 PLANTS.
12. CONTRACTOR SHALL TAKE PRECAUTIONS DURING CONSTRUCTION TO NOT DISFIGURE, SCAR, OR IMPAIR THE HEALTH OF ANY STREET TREE. CONTRACTOR SHALL OPERATE EQUIPMENT IN A MANNER AS TO NOT DAMAGE THE BRANCHES OF THE STREET TREE(S). THIS MAY REQUIRE USING SMALLER EQUIPMENT AND LOADING AND UNLOADING MATERIALS IN A DESIGNATED SPACE AWAY FROM TREES ON THE CONSTRUCTION SITE. ANY DAMAGE OR INJURY TO EXISTING STREET TREES (EITHER ABOVE OR BELOW GROUND) SHALL BE REPORTED IMMEDIATELY TO CITY FORESTRY AT (608) 266-4816. PENALTIES AND REMEDIATION SHALL BE REQUIRED.
13. AS DEFINED BY THE SECTION 107.13 OF CITY OF MADISON STANDARD SPECIFICATIONS FOR PUBLIC WORKS CONSTRUCTION: NO EXCAVATION IS PERMITTED WITHIN 5 FEET OF THE TRUNK OF THE STREET TREE OR WHEN CUTTING ROOTS OVER 3 INCHES IN DIAMETER. IF EXCAVATION IS NECESSARY, THE CONTRACTOR SHALL CONTACT MADISON CITY FORESTRY AT (608) 266-4816 PRIOR TO EXCAVATION. CITY OF MADISON FORESTRY PERSONNEL SHALL ASSESS THE IMPACT TO THE TREE AND TO ITS ROOT SYSTEM PRIOR TO WORK COMMENCING. TREE PROTECTION SPECIFICATIONS CAN BE FOUND ON THE FOLLOWING WEBSITE: [HTTPS://WWW.CITYOFMADISON.COM/BUSINESS/PW/SPECS.CFM](https://www.cityofmadison.com/business/pw/specs.cfm)
14. SECTION 107.13(G) OF CITY OF MADISON STANDARD SPECIFICATIONS FOR PUBLIC WORKS CONSTRUCTION (WEBSITE: [HTTPS://WWW.CITYOFMADISON.COM/BUSINESS/PW/SPECS.CFM](https://www.cityofmadison.com/business/pw/specs.cfm)) ADDRESSES SOIL COMPACTION NEAR STREET TREES AND SHALL BE FOLLOWED BY CONTRACTOR. THE STORAGE OF PARKED VEHICLES, CONSTRUCTION EQUIPMENT, BUILDING MATERIALS, REFUSE, EXCAVATED SPOILS OR DUMPING OF POISONOUS MATERIALS ON OR AROUND TREES AND ROOTS WITHIN FIVE (5) FEET OF THE TREE OR WITHIN THE PROTECTION ZONE IS PROHIBITED.
15. STREET TREE PRUNING SHALL BE COORDINATED WITH CITY FORESTRY AT A MINIMUM OF TWO WEEKS PRIOR TO THE START OF CONSTRUCTION FOR THIS PROJECT. CONTACT CITY FORESTRY AT (608) 266-4816. ALL PRUNING SHALL FOLLOW THE AMERICAN NATIONAL STANDARDS INSTITUTE (ANSI) A300 - PART 1 STANDARDS FOR PRUNING.
16. CONTRACTOR SHALL CONTACT CITY FORESTRY AT (608) 266-4816 TO SCHEDULE INSPECTION AND APPROVAL OF NURSERY TREE STOCK AND REVIEW PLANTING SPECIFICATIONS WITH THE LANDSCAPER AT LEAST ONE WEEK PRIOR TO STREET TREE PLANTING.
17. NO LATER THAN FIVE BUSINESS DAYS PRIOR TO FORMING CONCRETE AND CONSTRUCTING TREE GRATE SITES, THE CONTRACTOR SHALL CONTACT CITY FORESTRY AT (608) 266-4816 TO IDENTIFY AND LOCATE UNDERGROUND CONFLICTS (UTILITIES, VAULTS, CONDUIT) OR OTHER UNDERGROUND OBSTRUCTIONS AND DETERMINE GRATE LOCATIONS. THE CONTRACTOR WILL BE REQUIRED TO OBTAIN THE GRATE, MATCHING FRAME AND/OR TREE GUARD. TREE GRATE TYPE AND MATCHING FRAME: NEENAH 4X8 (R-8815-A). TREE GUARD NEENAH (R-8501-4818).
18. CITY FORESTRY WILL ISSUE A STREET TREE REMOVAL PERMIT FOR SIX TREES: ONE 2" OAK & ONE 2" ELM WITHIN WEST SIDE OF NORTH PARK STREET TERRACE, TWO 5" CRABAPPLES, ONE 4" CRABAPPLE & ONE 14" ELM WITHIN THE CENTER MEDIAN OF NORTH PARK STREET DUE TO UNDERGROUND UTILITY INSTALLATION. THE CONTRACTOR SHALL CONTACT CITY FORESTRY AT (608) 266-4816 TO OBTAIN PERMIT
19. ANY ADDITIONAL STREET TREE REMOVALS REQUESTED WILL REQUIRE A MINIMUM OF A 72-HOUR REVIEW PERIOD WHICH SHALL INCLUDE THE NOTIFICATION OF THE ALDERPERSON WITHIN WHO'S DISTRICT IS AFFECTED BY THE STREET TREE REMOVAL(S) PRIOR TO AN ADDITIONAL STREET TREE REMOVAL PERMIT BEING ISSUED BY CITY FORESTRY.
20. CONTACT UW-MADISON CAMPUS REPRESENTATIVE A MINIMUM OF 5 DAYS PRIOR TO ANTICIPATED PRUNING OF ANY TREES TO SCHEDULE A REVIEW & CONSULTATION WITH CAMPUS GROUNDS STAFF PRIOR TO PERFORMING ANY PRUNING.

### PLANT SCHEDULE

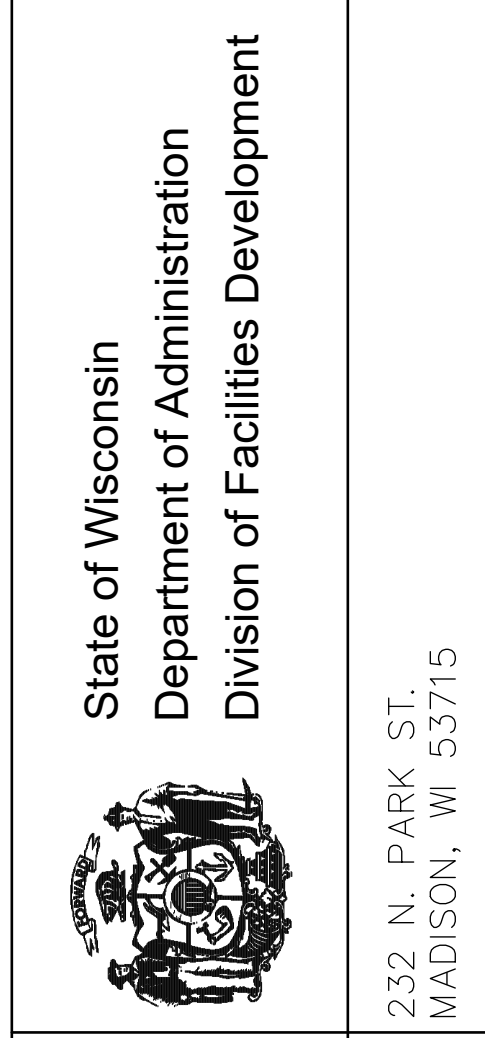
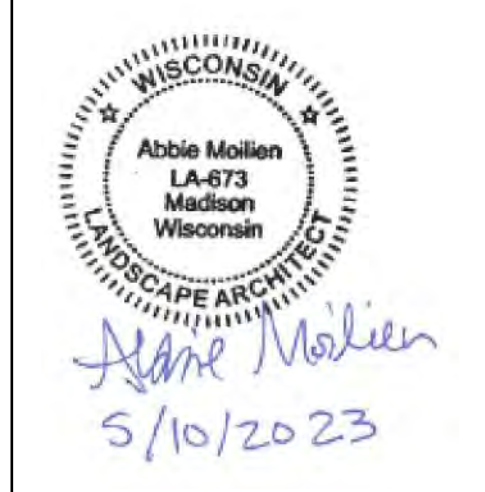
EVERGREEN TREES	CODE	BOTANICAL / COMMON NAME	CONT.	SIZE	QTY
	PG	Picea glauca 'N Select' / Midway White Spruce	BAB	6' HT (MIN.)	7
	PP	Picea glauca 'Pendula' / Weeping White Spruce	BAB	6' HT (MIN.)	4
ORNAMENTAL TREES	CODE	BOTANICAL / COMMON NAME	CONT.	SIZE	QTY
	AR	Aamelanther x grandiflora 'Robin Hill' / Robin Hill Serviceberry	BAB	6' HT (MIN.) UPRIGHT MULTI-STEM	1
	CF	Carpinus caroliniana 'J.N. Upright' / Firespire Muscadewood	BAB	2" Cal	3
	HV	Hamelis virginiana / Common Witch Hazel	BAB	2" Cal	1
SHADE TREES	CODE	BOTANICAL / COMMON NAME	CONT.	SIZE	QTY
	CS	Catalpa speciosa / Northern Catalpa	BAB	2" Cal	1
	GS	Gleditsia triacanthos inermis 'Shademaster' TM / Shademaster Honeycuzz	BAB	2" Cal	1
	PT	Populus tremuloides / Quaking Aspen	BAB	2" Cal	6
	QR	Quercus muhlenbergii / Chinkapin Oak	BAB	2" Cal	2
	TD	Taxodium distichum / Bald Cypress	BAB	2" Cal	2
	UN	Ulmus americana 'New Harmony' / New Harmony American Elm	BAB	2" Cal	1
	UA	Ulmus americana 'Princeton' / Princeton American Elm	BAB	2" Cal	1
DECIDUOUS SHRUBS	CODE	BOTANICAL / COMMON NAME	CONT.	SIZE	QTY
	Di	Diervilla lonicera / Dwarf Bush Honeysuckle	3 gal	CONT.	53
EVERGREEN SHRUBS	CODE	BOTANICAL / COMMON NAME	CONT.	SIZE	QTY
	Jp	Juniperus chinensis 'Pfitzeriana Kallay' / Kallays Compact Pfitzer Juniper	5 gal	CONT.	13
	TJ	Tsuga canadensis 'Jeddleloh' / Jeddleloh Eastern Hemlock	5 gal	CONT.	7
HERBACEOUS PERENNIALS	CODE	BOTANICAL / COMMON NAME	CONT.	SIZE	QTY
	abi	Amonia tabernaemontana 'Blue Ice' / Blue Ice Blue Star	1 gal	CONT.	71
	atb	Acelepis tuberosa / Butterfly Milkweed	1 gal	CONT.	10
	dmg	Dryopteris marginalis / Marginal Shield Fern	1 gal	CONT.	33
	ema	Eurybia macrophylla / Bigleaf Aster	1 gal	CONT.	65
	gma	Geranium maculatum / Spotted Geranium	1 gal	CONT.	93
	gtm	Geum triflorum / Prairie Smoke	1 gal	CONT.	13
	hab	Heuchera macrosticha 'Autumn Bride' / Autumn Bride Coral Belts	1 gal	CONT.	36
	rdf	Rudbeckia fulgida 'Blow' / Vette's Little Suzy Coneflower	1 gal	CONT.	11
ORNAMENTAL GRASSES	CODE	BOTANICAL / COMMON NAME	CONT.	SIZE	QTY
	cpn	Carex pensylvanica / Pennsylvania Sedge	1 gal	CONT.	219
	kmc	Koeleria macrantha / Prairie Junegrass	1 gal	CONT.	7
	sph	Sporobolus heterolepis / Prairie Dropseed	1 gal	CONT.	17

### LEGEND

- 1 SALVAGED LIMESTONE PAVER MAINTENANCE EDGE. SEE DETAIL 10/LA500
- 2 SALVAGED LIMESTONE PAVERS WITH PLANTED PLUGS. SEE DETAIL 8/LA500
- 3 MIXED PLANTING BED WITH 3" DEPTH TWICE SHREDDED HARDWOOD BARK MULCH
- 4 SOD
- 5 4" DIAMETER TREE MULCH RING WITH 3" DEPTH TWICE SHREDDED HARDWOOD BARK MULCH
- 4 CONSTRUCTION LIMITS
- 4 PROPERTY LINE R.O.W.
- GS 1 TREE PROTECTION FENCE
- 4 CONSTRUCTION FENCING
- 4 LIGHT POLES
- 4 INLETS

ZONE 1- SEE SHEET LA110

ZONE 3- SEE SHEET LA112



NEW ACADEMIC BUILDING  
LEVY HALL  
UNIVERSITY OF WISCONSIN - MADISON  
MADISON, WISCONSIN

Revisions:

No.	Date	Description

Graphic Scale: 0 10'

DFD Number: 20K1G-01


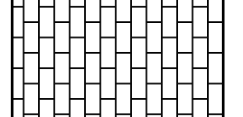


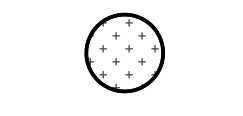






Set Type: LUA

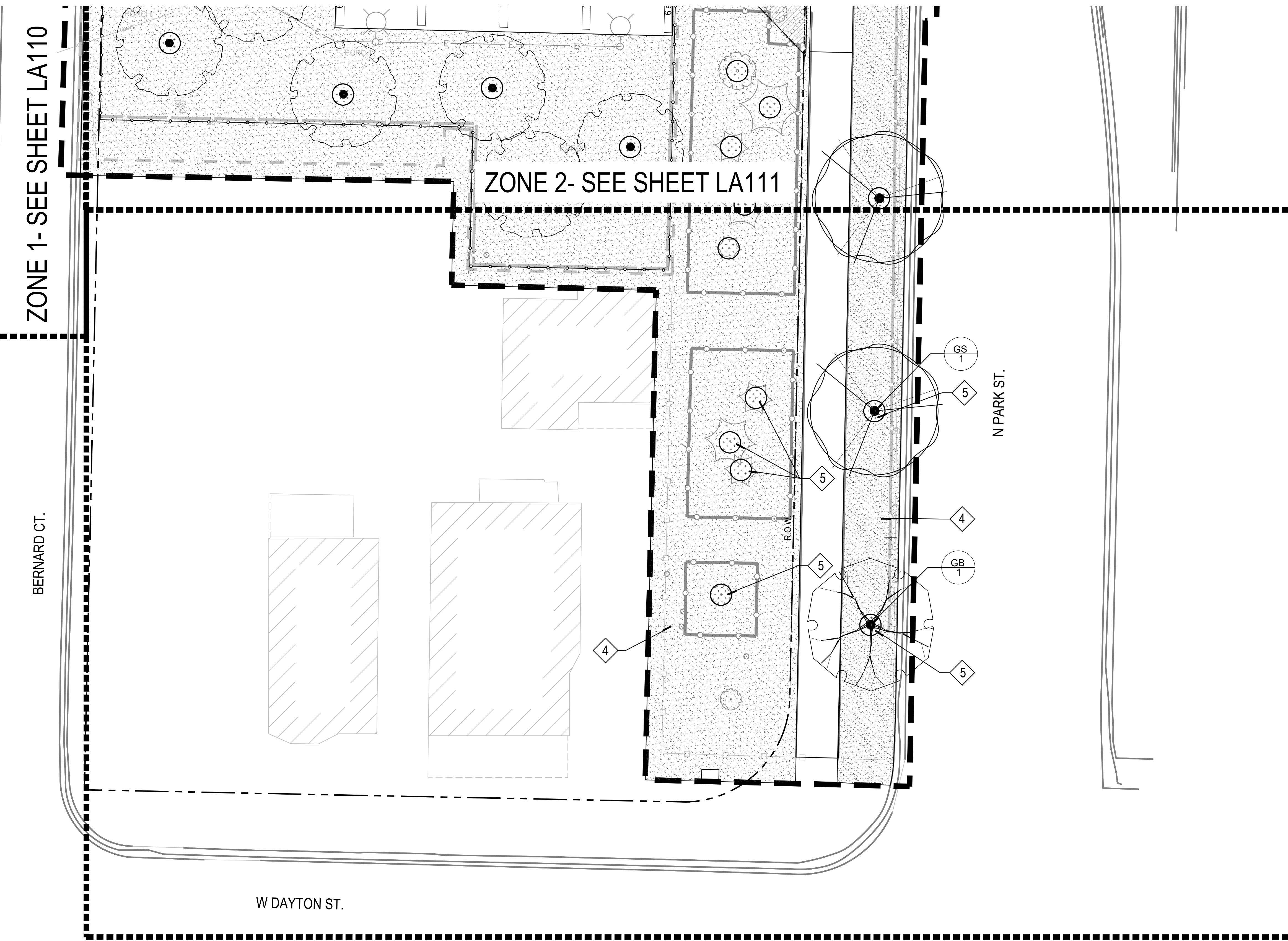
Date Issued: 05/22/2023

Sheet Number: LA111



**LEGEND**

- 
1 SALVAGED LIMESTONE PAVER  
MAINTENANCE EDGE, SEE DETAIL 10/LA500
- 
2 SALVAGED LIMESTONE PAVERS WITH  
PLANTED PLUGS, SEE DETAIL 8/LA500
- 
3 MIXED PLANTING BED WITH 3" DEPTH  
TWICE SHREDDED HARDWOOD BARK  
MULCH
- 
4 SOD
- 
5 4' DIAMETER TREE MULCH RING WITH  
3" DEPTH TWICE SHREDDED  
HARDWOOD BARK MULCH
  
- 
CONSTRUCTION LIMITS
- 
PROPERTY LINE R.O.W.
- 
TREE PROTECTION FENCE
- 
CONSTRUCTION FENCING
  
- 
LIGHT POLES
- 
INLETS



**NOTES**

1. FIELD VERIFY SURVEY INFORMATION PRIOR TO START OF CONSTRUCTION AND REPORT ANY DISCREPANCIES TO THE DFDM CONSTRUCTION REPRESENTATIVE.
2. CONTACT DIGGER'S HOTLINE, CITY OF MADISON, AND UW-MADISON TO LOCATE ALL PUBLIC AND PRIVATE UTILITIES PRIOR TO STARTING WORK.
3. FIELD VERIFY ALL EXISTING SITE CONDITIONS AND UTILITIES PRIOR TO STARTING WORK. ANY DAMAGE CAUSED TO UTILITIES, EITHER SHOWN OR NOT, SHALL BE REPAIRED AND PAID FOR AT THE CONTRACTOR'S EXPENSE.
4. PROTECT OR RELOCATE ALL BENCHMARKS. RELOCATED BENCHMARKS TO BE INCLUDED WITH CONTRACTOR.
5. PROTECT ALL EXISTING PAVEMENTS, CURBS, UTILITIES, AND OTHER IMPROVEMENTS (TO REMAIN) FROM CONSTRUCTION ACTIVITIES. RESTORE ALL AREAS DISTURBED BY CONSTRUCTION RELATED ACTIVITIES TO EXISTING CONDITIONS AT COMPLETION OF WORK UNLESS SHOWN OTHERWISE ON PLANS.
6. SUBMIT TOPSOIL TESTING REQUIREMENTS PER SECTION 32 91 13 SOIL PREPARATION.
7. VERIFY THAT SPECIFIED TOPSOIL AND PLANTING MIXTURE DEPTHS ARE PRESENT PRIOR TO PLANTING PER SECTIONS 32 91 13 SOIL PREPARATION. NOTIFY DFD CONSTRUCTION REPRESENTATIVE OF ANY PROBLEMS.
8. SPACE PLANTINGS PER PLANT SCHEDULE.
9. ALL WRAPPINGS, WIRE BASKETS, BURLAP, AND OTHER MISCELLANEOUS MATERIAL SHALL BE COMPLETELY REMOVED FROM ALL SHRUB AND TREE ROOT BALLS PRIOR TO INSTALLATION.
10. ALL EXISTING LAWN AREAS WITHIN AND ADJACENT TO THE PROJECT SITE THAT ARE DISTURBED BY CONSTRUCTION ACTIVITIES INCLUDING, BUT NOT LIMITED TO, UTILITY TRENCHING, ACCESS, OR MATERIALS STORAGE SHALL BE REPAIRED WITH SOD PER SECTION 32 92 23 SODDING.
11. APPLY MYCHROIZAL FUNGI TO ALL PLANTINGS PER SECTION 32 92 00 PLANTS.
12. CONTRACTOR SHALL TAKE PRECAUTIONS DURING CONSTRUCTION TO NOT DISFIGURE, SCAR, OR IMPAIR THE HEALTH OF ANY STREET TREE. CONTRACTOR SHALL OPERATE EQUIPMENT IN A MANNER AS TO NOT DAMAGE THE BRANCHES OF THE STREET TREE(S). THIS MAY REQUIRE USING SMALLER EQUIPMENT AND LOADING AND UNLOADING MATERIALS IN A DESIGNATED SPACE AWAY FROM TREES ON THE CONSTRUCTION SITE. ANY DAMAGE OR INJURY TO EXISTING STREET TREES (EITHER ABOVE OR BELOW GROUND) SHALL BE REPORTED IMMEDIATELY TO CITY FORESTRY AT (608) 266-4816. PENALTIES AND REMEDIATION SHALL BE REQUIRED.
13. AS DEFINED BY THE SECTION 107.13 OF CITY OF MADISON STANDARD SPECIFICATIONS FOR PUBLIC WORKS CONSTRUCTION: NO EXCAVATION IS PERMITTED WITHIN 5 FEET OF THE TRUNK OF THE STREET TREE OR WHEN CUTTING ROOTS OVER 3 INCHES IN DIAMETER. IF EXCAVATION IS NECESSARY, THE CONTRACTOR SHALL CONTACT MADISON CITY FORESTRY AT (608) 266-4816 PRIOR TO EXCAVATION. CITY OF MADISON FORESTRY PERSONNEL SHALL ASSESS THE IMPACT TO THE TREE AND TO ITS ROOT SYSTEM PRIOR TO WORK COMMENCING. TREE PROTECTION SPECIFICATIONS CAN BE FOUND ON THE FOLLOWING WEBSITE: [HTTPS://WWW.CITYOFMADISON.COM/BUSINESS/PW/SPECS.CFM](https://www.cityofmadison.com/business/pw/specs.cfm).
14. SECTION 107.13(G) OF CITY OF MADISON STANDARD SPECIFICATIONS FOR PUBLIC WORKS CONSTRUCTION (WEBSITE: [HTTPS://WWW.CITYOFMADISON.COM/BUSINESS/PW/SPECS.CFM](https://www.cityofmadison.com/business/pw/specs.cfm)) ADDRESSES SOIL COMPACTION NEAR STREET TREES AND SHALL BE FOLLOWED BY CONTRACTOR. THE STORAGE OF PARKED VEHICLES, CONSTRUCTION EQUIPMENT, BUILDING MATERIALS, REFUSE, EXCAVATED SPOILS OR DUMPING OF POISONOUS MATERIALS ON OR AROUND TREES AND ROOTS WITHIN FIVE (5) FEET OF THE TREE OR WITHIN THE PROTECTION ZONE IS PROHIBITED.
15. STREET TREE PRUNING SHALL BE COORDINATED WITH CITY FORESTRY AT A MINIMUM OF TWO WEEKS PRIOR TO THE START OF CONSTRUCTION FOR THIS PROJECT. CONTACT CITY FORESTRY AT (608)266-4816. ALL PRUNING SHALL FOLLOW THE AMERICAN NATIONAL STANDARDS INSTITUTE (ANSI) A300 - PART 1 STANDARDS FOR PRUNING.
16. CONTRACTOR SHALL CONTACT CITY FORESTRY AT (608) 266-4816 TO SCHEDULE INSPECTION AND APPROVAL OF NURSERY TREE STOCK AND REVIEW PLANTING SPECIFICATIONS WITH THE LANDSCAPER AT LEAST ONE WEEK PRIOR TO STREET TREE PLANTING.
17. NO LATER THAN FIVE BUSINESS DAYS PRIOR TO FORMING CONCRETE AND CONSTRUCTING TREE GRATE SITES, THE CONTRACTOR SHALL CONTACT CITY FORESTRY AT (608) 266-4816 TO IDENTIFY AND LOCATE UNDERGROUND CONFLICTS (UTILITIES, VAULTS, CONDUIT) OR OTHER UNDERGROUND OBSTRUCTIONS AND DETERMINE GRATE LOCATIONS. THE CONTRACTOR WILL BE REQUIRED TO OBTAIN THE GRATE, MATCHING FRAME AND/OR TREE GUARD. TREE GRATE TYPE AND MATCHING FRAME: NEENAH 4X8 (R-8815-4). TREE GUARD NEENAH (R-8501-4818).
18. CITY FORESTRY WILL ISSUE A STREET TREE REMOVAL PERMIT FOR SIX TREES: ONE 2" OAK & ONE 2" ELM WITHIN WEST SIDE OF NORTH PARK STREET TERRACE, TWO 5" CRABAPPLES, ONE 4" CRABAPPLE & ONE 14" ELM WITHIN THE CENTER MEDIAN OF NORTH PARK STREET DUE TO UNDERGROUND UTILITY INSTALLATION. THE CONTRACTOR SHALL CONTACT CITY FORESTRY AT (608) 266-4816 TO OBTAIN PERMIT
19. ANY ADDITIONAL STREET TREE REMOVALS REQUESTED SHALL REQUIRE A MINIMUM OF A 72-HOUR REVIEW PERIOD WHICH SHALL INCLUDE THE NOTIFICATION OF THE ALDERPERSON WITHIN WHO'S DISTRICT IS AFFECTED BY THE STREET TREE REMOVAL(S) PRIOR TO AN ADDITIONAL STREET TREE REMOVAL PERMIT BEING ISSUED BY CITY FORESTRY.
20. CONTACT UW-MADISON CAMPUS REPRESENTATIVE A MINIMUM OF 5 DAYS PRIOR TO ANTICIPATED PRUNING OF ANY TREES TO SCHEDULE A REVIEW & CONSULTATION WITH CAMPUS GROUNDS STAFF PRIOR TO PERFORMING ANY PRUNING.

**PLANT SCHEDULE**

SHADE TREES	CODE	BOTANICAL / COMMON NAME	CONT.	SIZE	QTY
	GB	Griggs biloba 'Autumn Gold' TM / Autumn Gold Griggs	8&8	2' Cal	1
	GS	Gleditsia tricanthos nemis 'Shademaster' TM / Shademaster Honeylocust	8&8	2' Cal	1

Revisions:

No.	Date	Description

Graphic Scale	
DFD Number	20K1G-01
Set Type	LUA
Date Issued	05/22/2023
Sheet Number	LA112











