


Public Hearing
Arbor Hills Supplemental Fire Flow Supply
Booster Station No. 118

Water Utility Conference Room
119 East Olin Ave

4:30 p.m.
September 29, 2010



Review of Project – Public Participation Process

- ▶ Establish the Project – Completed June 2009
 - Improve Available Fire Flow
 - Improve System Reliability
- ▶ Evaluate Alternatives – Completed September 2009
 - Selected alternative was to construct a pump station in conjunction with construction of the Cannonball Trail Water Main
- ▶ Site Selection 
- ▶ Architectural Features

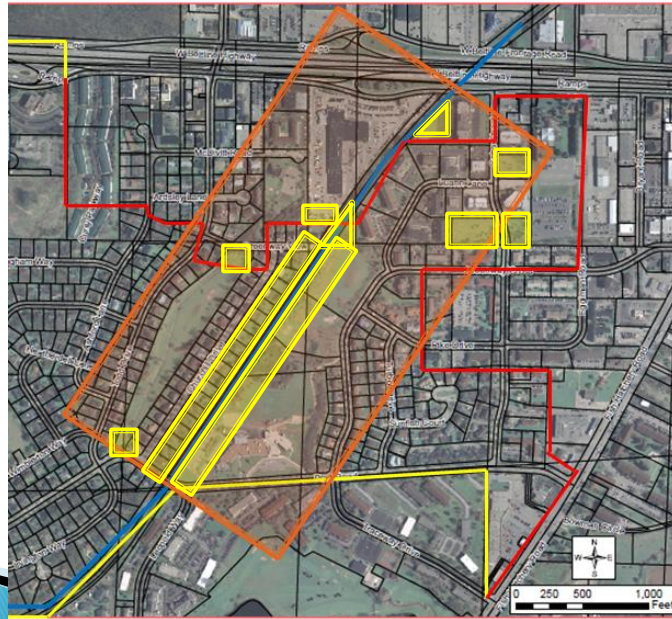
Review of Site Selection Meetings

- ▶ Site Selection Meetings
 - June 17, 2010 Citizen Advisory Panel Meeting No. 1
 - July 19, 2010 Public Meeting No. 1
 - August 23, 2010 Citizen Advisory Panel Meeting No. 2
 - September 7, 2010 Public Meeting No. 2

Building and Site Selection Criteria

- ▶ Distance to Water Main beneath Cannonball Trail
- ▶ Sewer Availability
- ▶ Site Access
- ▶ Power Availability
- ▶ Property Cost
- ▶ Impact on Green Space and Parks

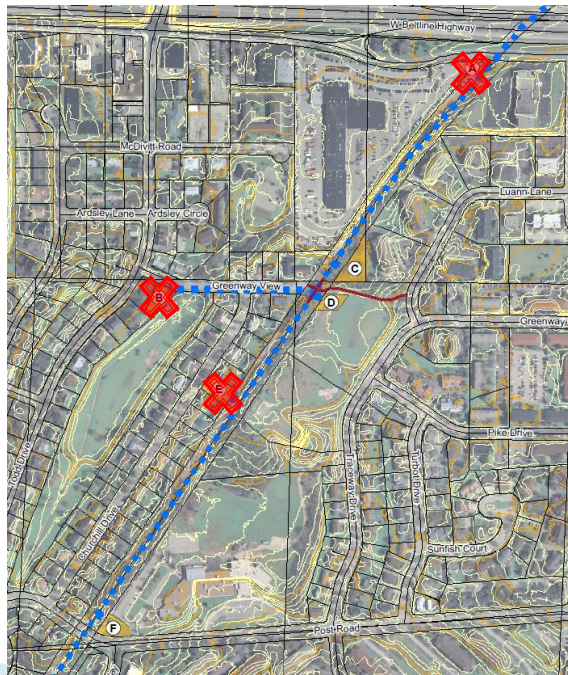
Original Potential Site Locations



Site Location Map

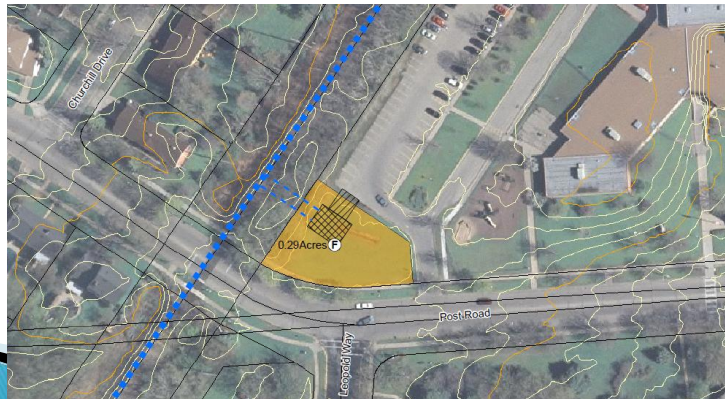
- ~~Site A - Overpass~~
- ~~Site B - 2609 Greenway View~~
- Site C - 2234 Luann Lane
- Site D - Aldo Leopold Park
- ~~Site E - Churchill Drive*~~
- Site F - Leopold School

* Churchill Drive lot was randomly selected from properties that back up to the bike path right-of-way.



Site F – Leopold School

- Site Ranking 3
- Will need to negotiate with school district on property acquisition and cost.
- Good power availability.
- Permanent access easement needed from school district.
- Zoned A – Will need to create an out lot.
- More visible site, but screened from neighbors to the east.



Site C – 2234 Luann Lane

- Site Ranking = 2
- Very close to ideal location from a technical aspect.
- Takes away from green space and would remove mature trees.
- Can be screened from neighbors to west and east by trees.
- Removes a property from the tax rolls.
- Will need to negotiate a selling price with the current property owner.
- Requires some fill which will increase construction costs.
- Slightly longer access drive.
- Zoned PUD – Will need to revise PUD to create land locked lot.



Site D – Aldo Leopold Park

- Site Ranking = 1
- Currently owned by City (Parks Department)
- Very close to ideal location from a technical aspect.
- Takes away from green space.
- Building can be screened from neighbors to west and north by existing tree lines.
- Access to 480 volt electricity is good.
- Zoned R3. Will need a new CSM to create an out lot.



Building and Site Selection Criteria Matrix

Site	Property Ownership	Property Costs	Property Availability	Zoning	Site Costs	Green Space	Power	Ranking
D Aldo Leopold Park	Park	+	+	O R3	O	-	+	1
C 2234 Luann Lane	Private	-	O	O PUD	-	-	+	2
F Leopold School	School	-	O	O A	O	-	+	3

Thank You!



Contact Information

▶ Madison Water Utility

- Project Manager – Al Larson, P.E.
 - 608-266-4653 or allarson@cityofmadison.com

▶ Consultant

- Project Manager– Andy Mullendore, P.E.
 - 608-251-4843 or Andy.Mullendore@strand.com