

# EXHIBIT B

## PARTIAL ALLEY VACATION AND DISCONTINUANCE MAP

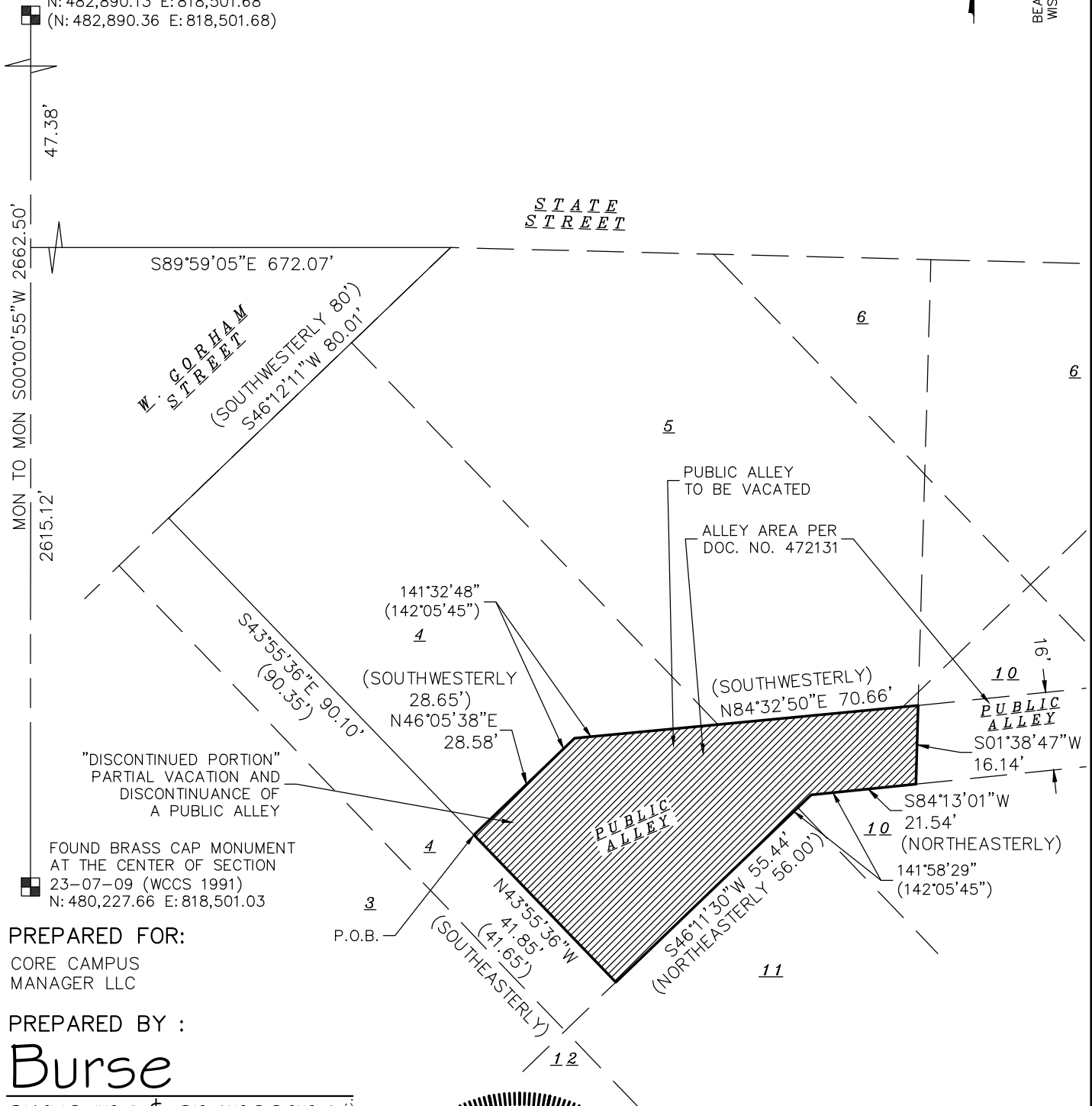
PART OF A PUBLIC ALLEY AS GRANTED TO THE CITY OF MADISON PER DOCUMENT NUMBER 472131, LOCATED IN PARTS OF LOTS 4, 5, 10 AND 11, BLOCK 55, ORIGINAL PLAT OF MADISON, LOCATED IN THE NORTHWEST QUARTER OF THE NORTHEAST QUARTER OF SECTION 23, TOWNSHIP 07 NORTH, RANGE 09 EAST, CITY OF MADISON, DANE COUNTY, WISCONSIN.



SCALE : ONE INCH = THIRTY FEET

**GRID NORTH**  
BEARINGS ARE BASED UPON THE WISCONSIN COUNTY COORDINATE SYSTEM (DANE ZONE)

FOUND BRASS CAP MONUMENT AT THE NORTH QUARTER CORNER OF SECTION 23-07-09 (WCCS 1991)  
N: 482,890.13 E: 818,501.68  
(N: 482,890.36 E: 818,501.68)



"DISCONTINUED PORTION"  
PARTIAL VACATION AND  
DISCONTINUANCE OF  
A PUBLIC ALLEY

FOUND BRASS CAP MONUMENT  
AT THE CENTER OF SECTION  
23-07-09 (WCCS 1991)  
N: 480,227.66 E: 818,501.03

**PREPARED FOR:**

CORE CAMPUS  
MANAGER LLC

**PREPARED BY :**

**Burse**

surveying & engineering inc.

2801 International Lane, Suite 101  
Madison, WI 53704 608.250.9263  
Fax: 608.250.9266  
email: mburse@bse-inc.net  
www.bursesurveyengr.com

MAP NO. \_\_\_\_\_

DOCUMENT NO. \_\_\_\_\_

VOLUME \_\_\_\_\_ PAGES \_\_\_\_\_

Date: November 30, 2021

Plot View: csm

\BSE2329\dwg\Survey\BSE2329v18vacate.dwg

