

Final Signage Packet Approval

September 29, 2005
Revised December 27, 2005

Network 222
222 W. Washington Ave
Madison, WI 53703

Index:

Final Signage

- A Address Sign
- B Directory Sign

Master Plan Concept Only - Not for Installation

- C Signage for Henry and W. Washington Ave. Band
- D Existing Tower Canopy Signage
- E Signage at Fairchild and W. Washington Ave
- F Signage at W. Washington
- G Signage at Fairchild
- H Signage at Henry and W. Washington Ave Sidewalk

Description:

This signage packet is submitted for final approval. This packet includes the proposed signage master plan (drawings A-G). The signage master plan was designed to address both pedestrian and vehicular traffic while being considerate to the size and scale of the existing building as well as potential future retail tenants.

APPROVED BY:	<i>[Signature]</i>
DATE:	<i>12/27/05</i>
PLANNING UNIT <i>UPL</i> CITY OF MADISON DEPARTMENT OF PLANNING & DEVELOPMENT	

1 INDEX & DESCRIPTION



2 W. WASHINGTON / HENRY
EXISTING PHOTO



1 W. WASHINGTON / FAIRCHILD
EXISTING PHOTO

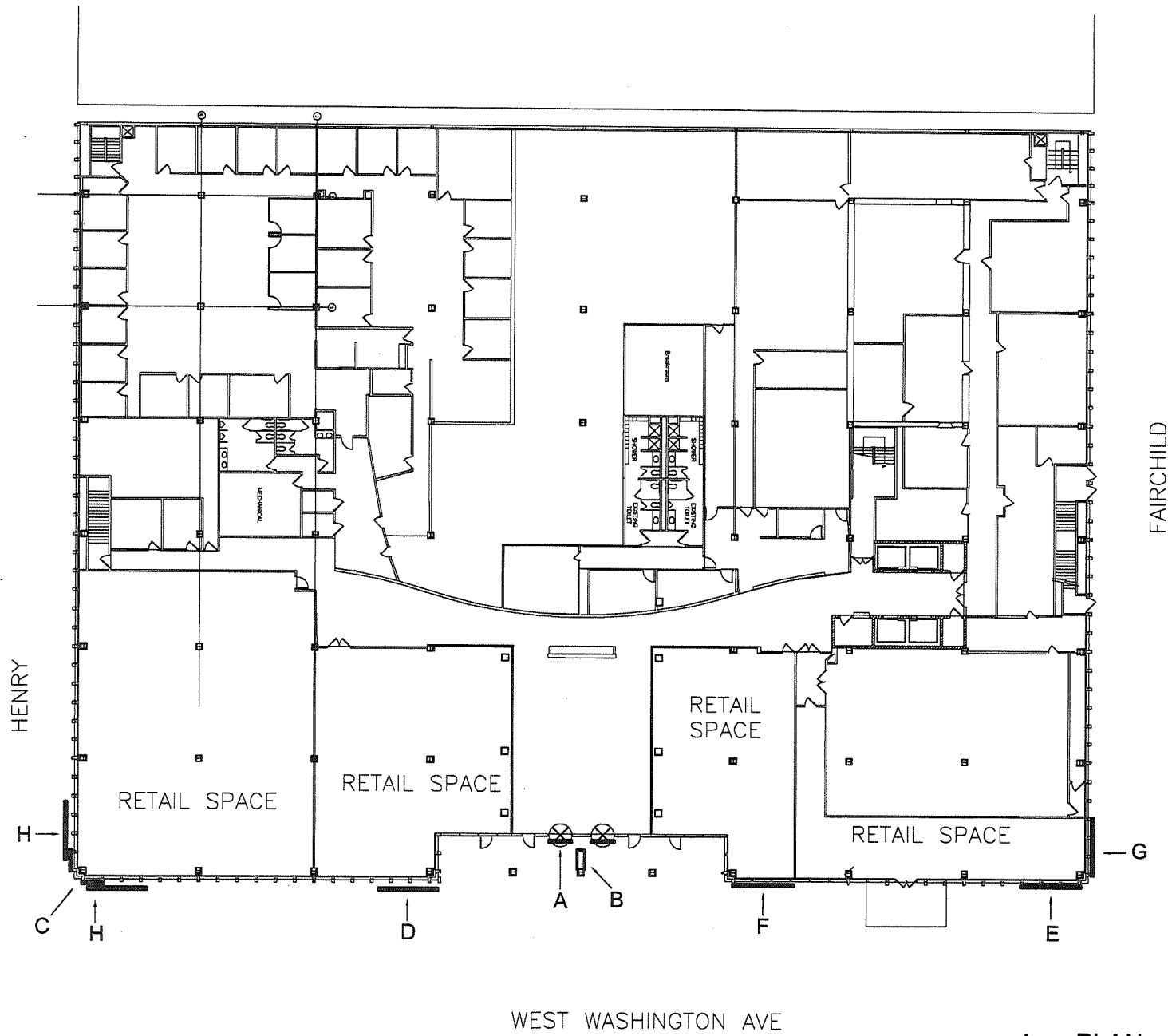
NETWORK 222

222 WEST WASHINGTON AVENUE
MADISON, WISCONSIN 53703

SIGNAGE MASTER PLAN

SEPTEMBER 29, 2005
revised December 27, 2005





WEST WASHINGTON AVE

1 PLAN
1" = 40'-0"

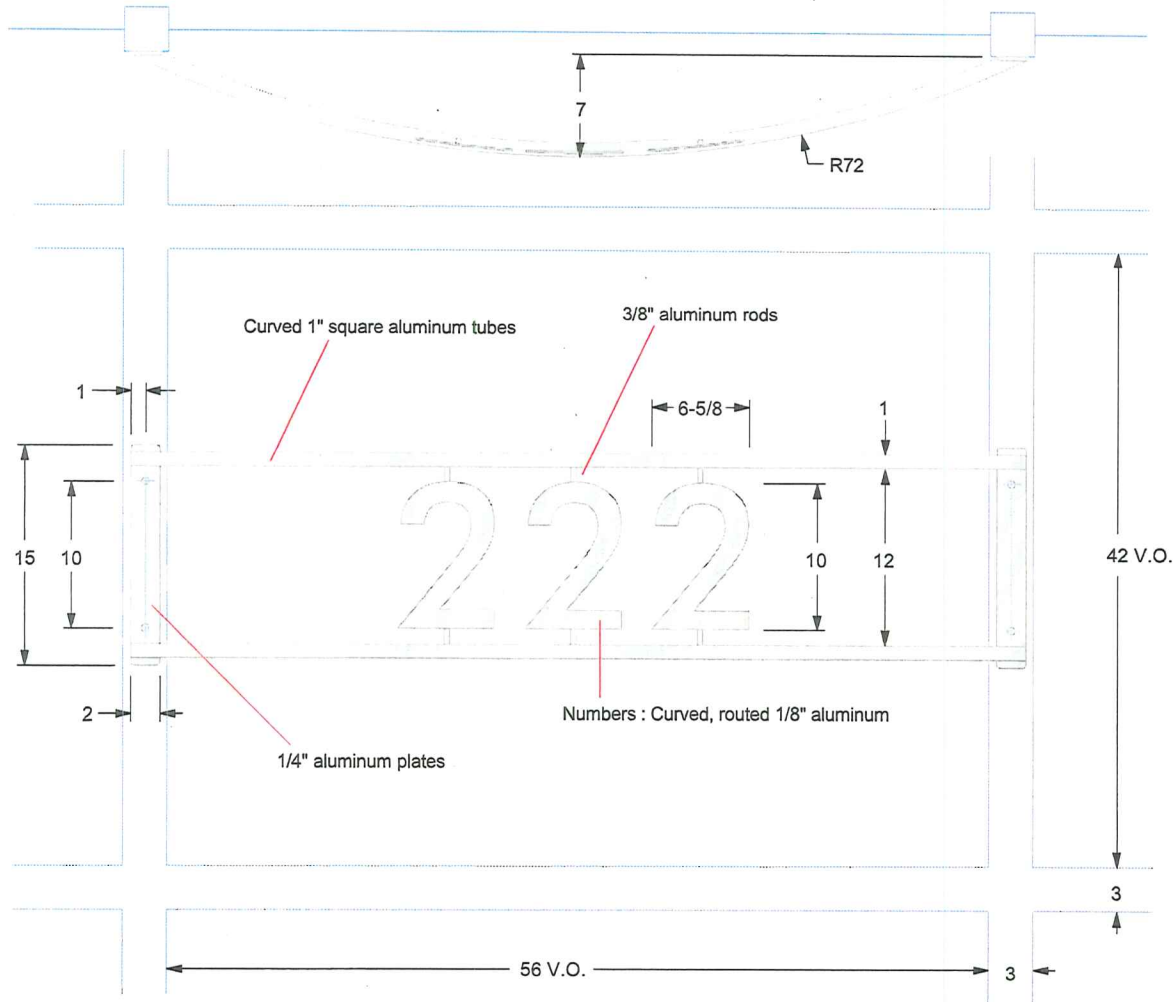
NETWORK 222
222 WEST WASHINGTON AVENUE
MADISON, WISCONSIN 53703

SIGNAGE MASTER PLAN

SEPTEMBER 29, 2005
revised December 27, 2005



ADDRESS SIGN SPECIFICATIONS :
(Fabricated Aluminum, Routed Numbering)



<input checked="" type="checkbox"/>	PRELIMINARY ARTWORK
<input type="checkbox"/>	APPROVED FOR PRODUCTION
<input type="checkbox"/>	APPROVED PER NOTED CHANGES

CUSTOMER APPROVAL	

LANDLORD	

JNB SALES REPRESENTATIVE	



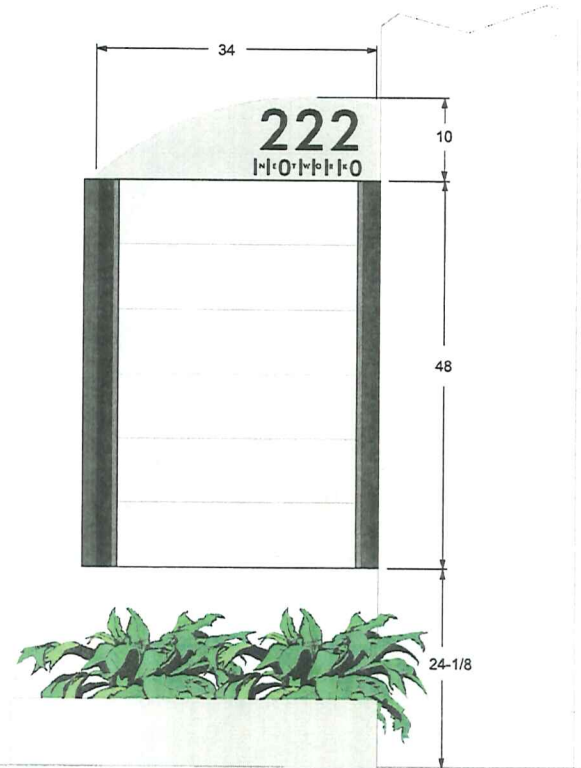
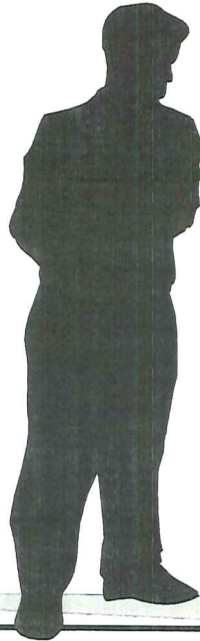
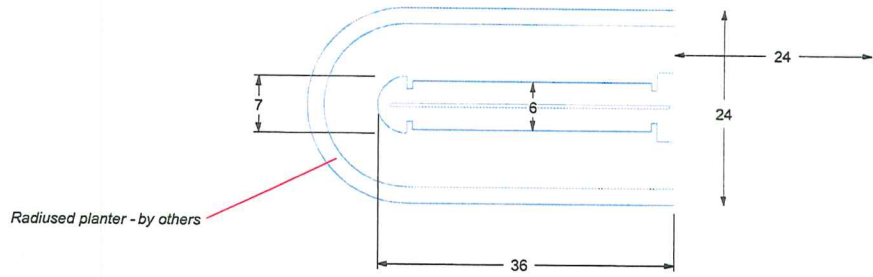
JNB SIGNS, INC.

1221 Venture Drive, Suite 1, Janesville, WI 53545 Phone : 1-800-243-7997 Fax : 1-608-754-7822

All rights of this design are exclusive property of JNB Signs, Inc. and cannot be reproduced, displayed or used in any way without written consent of JNB Signs.
 JNB Signs is not responsible for differences in color between this print and final product. JNB Signs will attempt to match colors as closely as possible by using vinyl and paint samples where possible, but cannot guarantee exact color matches due to differing surfaces, materials and paints being applied.

Client : Fiore Companies Project Location : 222 W. Washington Ave, Madison, WI
 Contact : Phillip Maier Date : 08-08-05 Drawing : 01778-08b

DIRECTORY SIGN SPECIFICATIONS :
(Fabricated Aluminum, Vinyl Copy)



PRELIMINARY ARTWORK
 APPROVED FOR PRODUCTION
 APPROVED PER NOTED CHANGES

CUSTOMER APPROVAL _____

LANDLORD _____

JNB SALES REPRESENTATIVE _____

WALL SIGN SPECIFICATIONS :
(Single Sided, Internally Lighted, Individual Channel Letters)

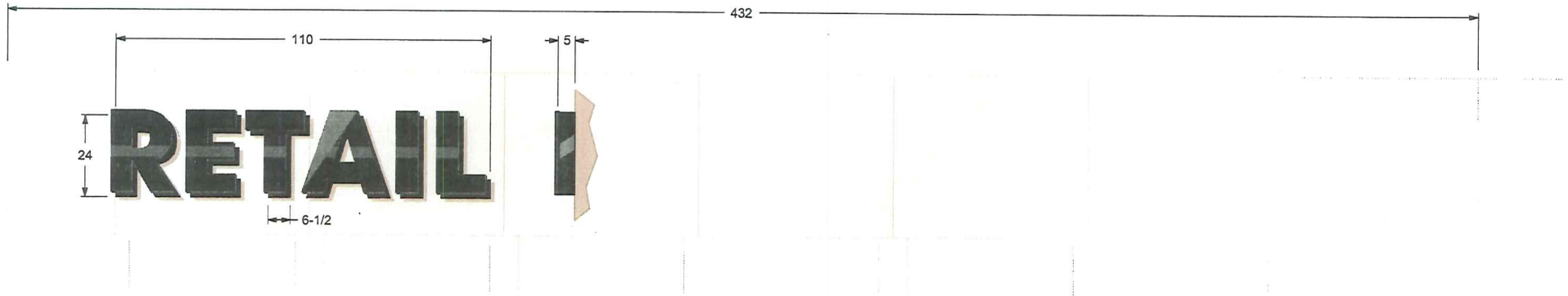
Channel Letters : Standard front lighting plexi face design, fabricated aluminum pan letters, letter backs .090", returns .063" x 5" tall, returns primed and painted "Black".

Letter Faces : 3/16" Black/White P95 translucent acrylic with 1" "Black" trimcap.

Illumination : Letters to be lighted internally with double stroke of 13mm (EGL 6500) Snowwhite neon tubing, terminated with "Bend Backs", 60ma transformers located on interior wall surface.

Mounting : Flush wall mounted.

Electrical : 120 Volt, UL Listed & Labeled.



JNB SIGNS, INC.

1221 Venture Drive, Suite 1, Janesville, WI 53545 Phone : 1-800-243-7997 Fax : 1-608-754-7822

All rights of this design are exclusive property of JNB Signs, Inc. and cannot be reproduced, displayed or used in any way without written consent of JNB Signs.

JNB Signs is not responsible for differences in colors between this print and final product. JNB Signs will attempt to match colors as closely as possible by using vinyl and paint samples when possible, but cannot guarantee exact color matches due to differing surfaces, materials and paints being applied.

Client : Fiore Companies Project Location : Network 222, 222 W. Washington, Madison, WI

Contact : Phillip Mayer Date : 08-08-05 Drawing : 01778-13e

WALL SIGN SPECIFICATIONS :
(Single Sided, Internally Lighted, Individual Channel Letters)

Channel Letters : Standard front lighting plexi face design, fabricated aluminum pan letters, letter backs .090", returns .063" x 5" tall, returns primed and painted "Black".

Letter Faces : 3/16" Black/White P95 translucent acrylic with 1" "Black" trimcap.

Illumination : Letters to be lighted internally with double stroke of 13mm (EGL 6500) Snowwhite neon tubing, terminated with "Bend Backs", 60ma transformers located on interior wall surface.

Mounting : Flush wall mounted.

Electrical : 120 Volt, UL Listed & Labeled.



RETAIL



JNB SIGNS, INC.

1221 Venture Drive, Suite 1, Janesville, WI 53545 Phone : 1-800-243-7997 Fax : 1-608-754-7822

All rights of this design are worldwide property of JNB Signs, Inc. and cannot be reproduced, displayed or used in any way without written consent of JNB Signs. JNB Signs is not responsible for differences in colors between this print and final product. JNB Signs will attempt to match colors as closely as possible by color test and print reproduction when feasible. Full color reproduction and color matching done in off-line facilities, materials and prints being applied.

Client : Fiore Companies

Project Location: Network 222, 222 W. Washington, Madison, WI

Contact : Phillip Mayer

Date : 08-08-05 Drawing : 01778-13e

WALL SIGN SPECIFICATIONS :

(Single Sided, Internally Lighted, Individual Channel Letters)

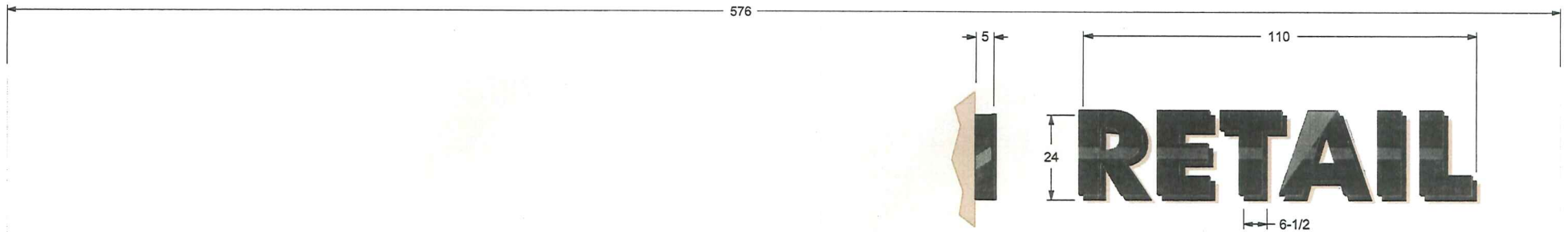
Channel Letters : Standard front lighting plexi face design, fabricated aluminum pan letters, letter backs .090", returns .063" x 5" tall, returns primed and painted "Black".

Letter Faces : 3/16" Black/White P95 translucent acrylic with 1" "Black" trimcap.

Illumination : Letters to be lighted internally with double stroke of 13mm (EGL 6500) Snowwhite neon tubing, terminated with "Bend Backs", 60ma transformers located on interior wall surface.

Mounting : Flush wall mounted.

Electrical : 120 Volt, UL Listed & Labeled.



JNB SIGNS, INC.

1221 Venture Drive, Suite 1, Janesville, WI 53545 Phone : 1-800-243-7997 Fax : 1-608-754-7822

All rights of this design are exclusive property of JNB Signs, Inc. and cannot be reproduced, displayed or used in any way without written consent of JNB Signs.

JNB Signs is not responsible for differences in colors between this printed final product. JNB Signs will attempt to match colors as closely as possible by using vinyl and paint samples when possible, but cannot guarantee exact color matches due to differing surfaces, materials and paints being applied.

Client : Fiore Companies Project Location : Network 222, 222 W. Washington, Madison, WI

Contact : Phillip Mayer Date : 08-08-05 Drawing : 01778-05b

WALL SIGN SPECIFICATIONS :
(Single Sided, Internally Lighted, Individual Channel Letters)

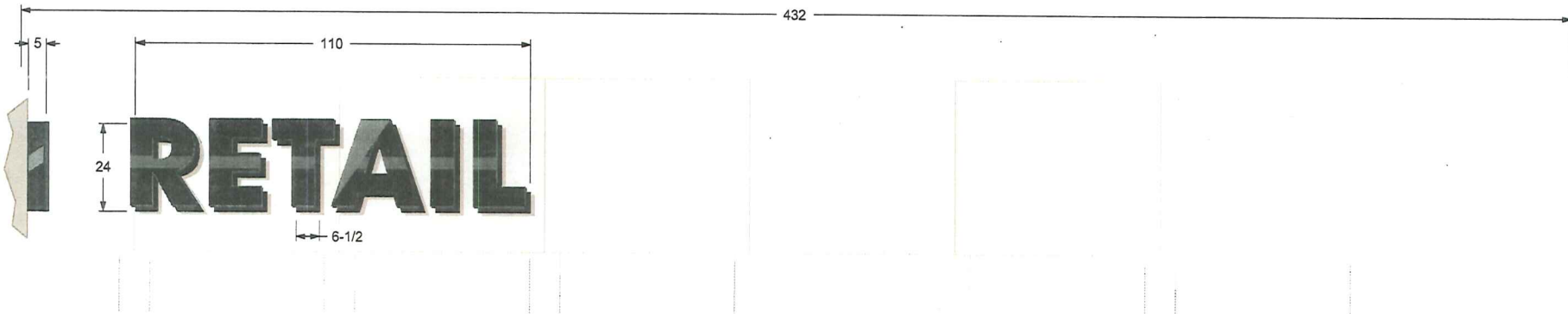
Channel Letters : Standard front lighting plexi face design, fabricated aluminum pan letters, letter backs .090", returns .063" x 5" tall, returns primed and painted "Black".

Letter Faces : 3/16" Black/White P95 translucent acrylic with 1" "Black" trimcap.

Illumination : Letters to be lighted internally with double stroke of 13mm (EGL 6500) Snowwhite neon tubing, terminated with "Bend Backs", 60ma transformers located on interior wall surface.

Mounting : Flush wall mounted.

Electrical : 120 Volt, UL Listed & Labeled.



JNB SIGNS, INC.

1221 Venture Drive, Suite 1, Janesville, WI 53545 Phone : 1-800-243-7997 Fax : 1-608-754-7822

All rights of this design are exclusive property of JNB Signs, Inc. and cannot be reproduced, displayed or used in any way without written consent of JNB Signs.

JNB Signs is not responsible for differences in colors between this print and final product. JNB Signs will attempt to match colors as closely as possible by using vinyl and paint samples when possible, but cannot guarantee exact color matches due to differing surfaces, materials and paints being applied.

Client : Fiore Companies Project Location : Network 222, 222 W. Washington, Madison, WI
 Contact : Phillip Mayer Date : 08-08-05 Drawing : 01778-03b

WALL SIGN SPECIFICATIONS :
(Single Sided, Internally Lighted, Individual Channel Letters)



Channel Letters : Standard front lighting plexi face design, fabricated aluminum pan letters, letter backs .090", returns .063" x 5" tall, returns primed and painted "Black".

Letter Faces : 3/16" Black/White P95 translucent acrylic with 1" "Black" trimcap.

Illumination : Letters to be lighted internally with double stroke of 13mm (EGL 6500) Snowwhite neon tubing, terminated with "Bend Backs", 60ma transformers located on interior wall surface.

Mounting : Flush wall mounted.

Electrical : 120 Volt, UL Listed & Labeled.

432



JNB SIGNS, INC.

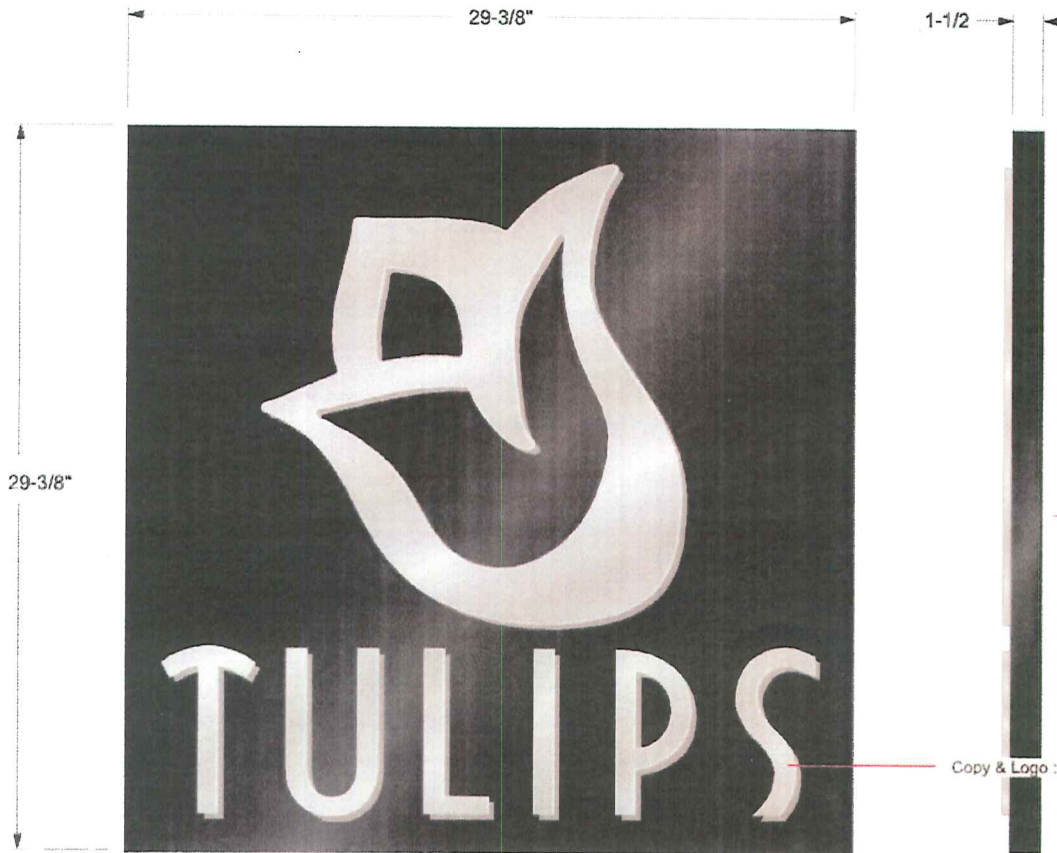
1221 Venture Drive, Suite 1, Janesville, WI 53545 Phone : 1-800-245-7997 Fax : 1-608-754-7822

All rights of this design are exclusive property of JNB Signs, Inc. and cannot be reproduced, displayed or used in any way without written consent of JNB Signs. JNB Signs is not responsible for differences in colors between this print and final product. JNB Signs will attempt to make colors as closely as possible by using shop and field samples when desirable, and cannot guarantee exact color reproduction due to differing conditions, materials and paints being used.

Client: Flore Companies
 Contact: Phillip Mayer

Project Location: Network 222, 222 W. Washington, Madison, WI
 Date: 08-08-05 Drawing: 01778-17

WALL SIGN SPECIFICATIONS :
(Fabricated Aluminum, Routed Lettering, Non-Lighted)



Sign Panel : Fabricated aluminum, painted "Gloss Black"

Copy & Logo : Routed 1/4" aluminum, brushed finish, clear coated

PRELIMINARY ARTWORK

APPROVED FOR PRODUCTION

APPROVED PER NOTED CHANGES

_____ CUSTOMER APPROVAL

_____ LANDLORD

_____ JNB SALES REPRESENTATIVE



JNB SIGNS, INC.

1221 Venture Drive, Suite 1, Janesville, WI 53546 Phone : 1-800-943-7937 Fax : 1-608-794-7922

All rights of this design are exclusive property of JNB Signs, Inc. and cannot be reproduced, displayed or used in any way without consent of JNB Signs. JNB Signs is not responsible for differences in colors between this print and final product. JNB Signs will attempt to match colors as closely as possible by using 40% and 60% matches when possible. Not correct color match and color matches due to differing conditions, materials and prints being required.

Client : Fiore Companies Project Location : 222 W. Washington Ave, Madison, WI

Contact : Phillip Maier Date : 11-02-05 Drawing : 01778-14c