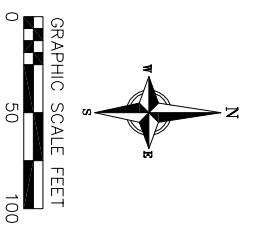
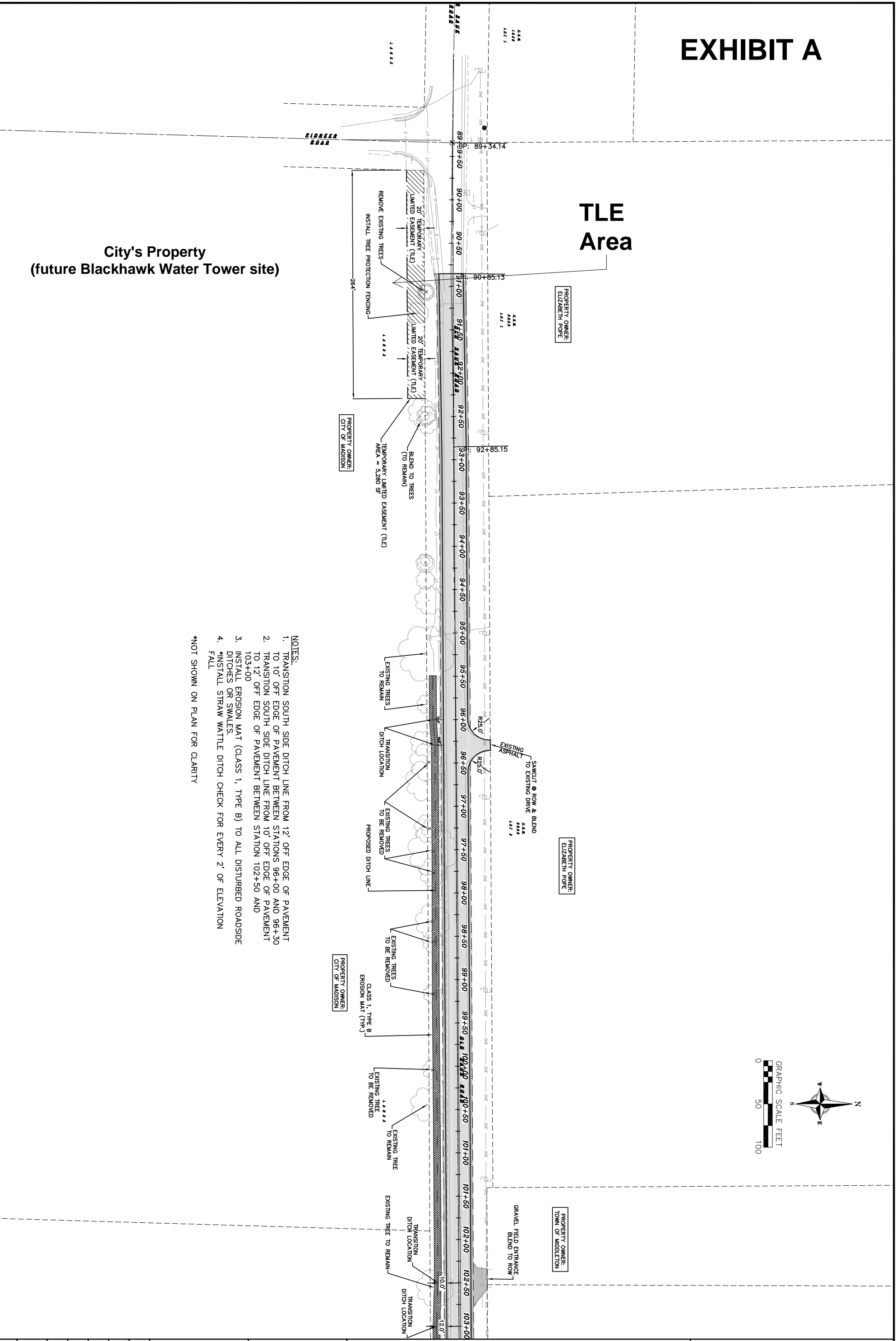


EXHIBIT A

**City's Property
(future Blackhawk Water Tower site)**

**TLE
Area**

- NOTES:**
1. TRANSITION SOUTH SIDE DITCH LINE FROM 12' OFF EDGE OF PAVEMENT TO 10' OFF EDGE OF PAVEMENT BETWEEN STATIONS 96+00 AND 96+30
 2. TRANSITION SOUTH SIDE DITCH LINE FROM 10' OFF EDGE OF PAVEMENT TO 12' OFF EDGE OF PAVEMENT BETWEEN STATION 102+50 AND 103+00
 3. INSTALL EROSION MAT (CLASS 1, TYPE B) TO ALL DISTURBED ROADSIDE DITCHES OR SWALES.
 4. *INSTALL STRAW WATTLE DITCH CHECK FOR EVERY 2' OF ELEVATION FALL
- *NOT SHOWN ON PLAN FOR CLARITY



TEMPORARY LIMITED EASEMENT (TLE) EXHIBIT
 OLD SAUK ROAD PULVERIZE & OVERLAY
 TOWN OF MIDDLETON
 DANE COUNTY, WISCONSIN

vierbicher
 planners | engineers | advisors

REEDSBURG - MADISON - PRAIRIE DU CHIEN
 999 Foutter Drive, Suite 201 Madison, Wisconsin 53717
 Phone: (608) 826-0532 Fax: (608) 826-0530

REVISIONS			REVISIONS		
NO.	DATE	REMARKS	NO.	DATE	REMARKS

SCALE AS SHOWN

DATE 4-22-14

DESIGNER ACAR

CHECKED

PROJECT NO. 140004

SHEET 1 OF 1

DWG NO.