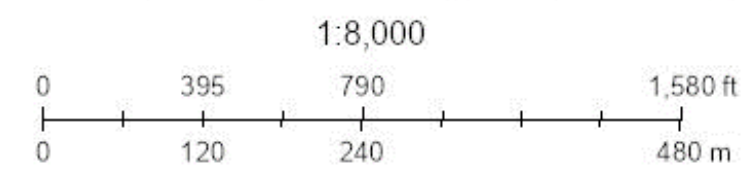
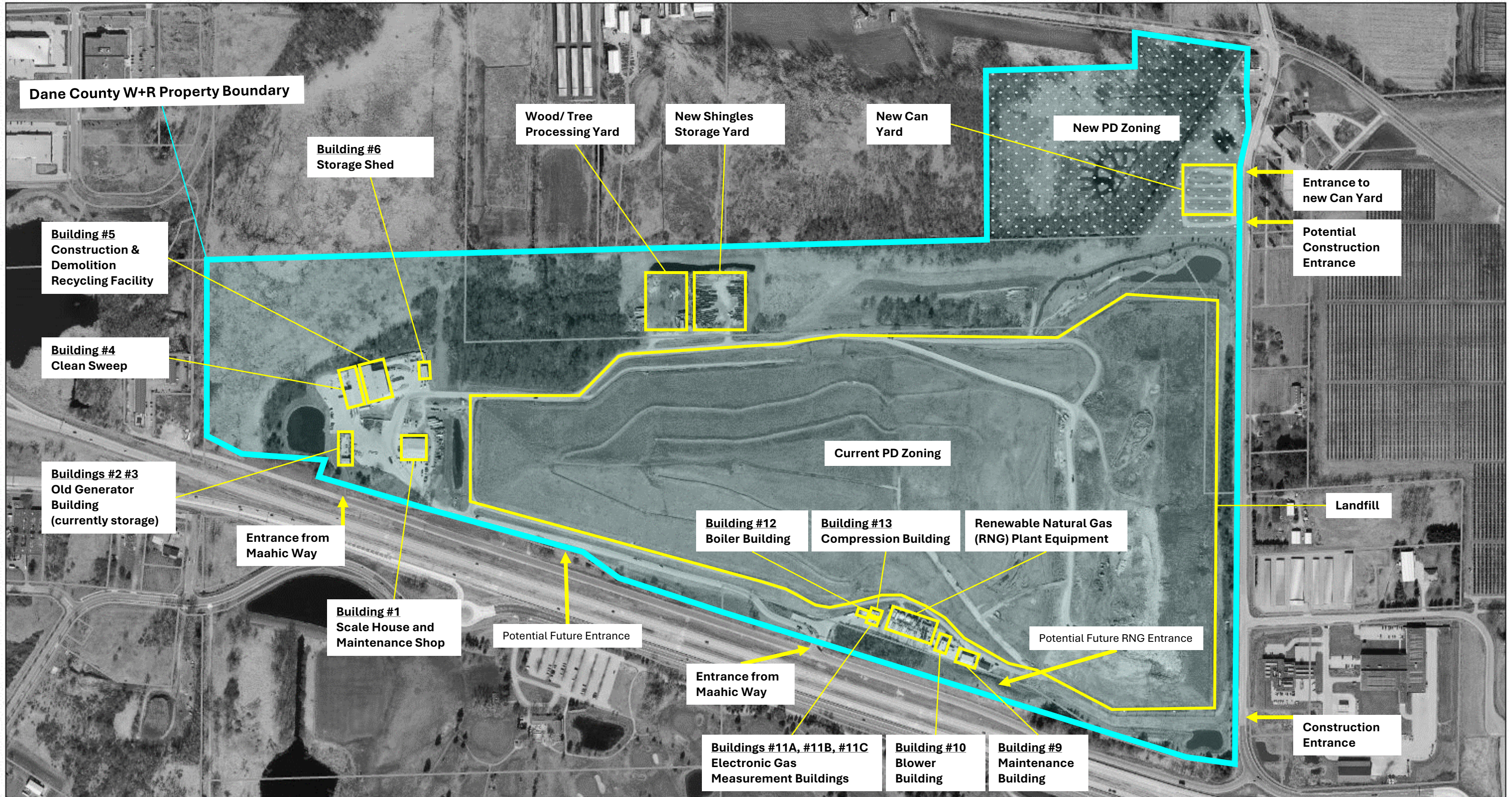


# Dane County Landfill PD District - Overall Plan



# DANE COUNTY CAN YARD

## MARCH, 2026

CITY OF MADISON  
 MADISON, WISCONSIN  
 FOTH PROJECT #0026D006.00

### OWNER CONTACT INFORMATION

**WYETH AUGUSTINE-MARCEIL**  
 SUSTAINABILITY ENGAGEMENT COORDINATOR  
 DANE COUNTY DEPARTMENT OF WASTE & RENEWABLES  
 1919 ALLIANT ENERGY CENTER WAY  
 MADISON, WI 53713  
 608-590-9534  
 LANDFILL.COUNTYOFDANE.COM

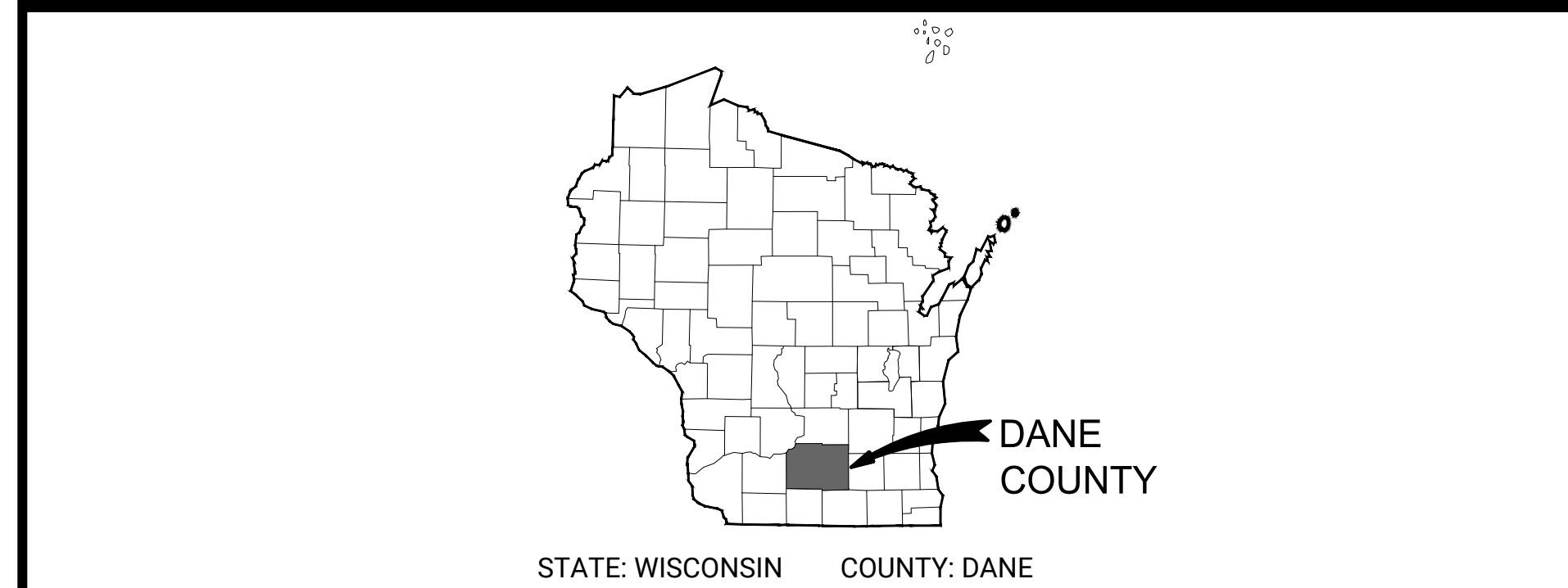
### ENGINEER CONTACT INFORMATION

**CHRIS HITCH - P.E.**  
 FOTH INFRASTRUCTURE & ENVIRONMENT, LLC  
 BALLPARK COMMONS OFFICE BUILDING  
 7044 SOUTH BALLPARK DRIVE, SUITE 200  
 FRANKLIN, WI 53132  
 PHONE: (414) 336-7900

### LOCATION MAP



### STATE & COUNTY LOCATION



## ISSUE FOR REVIEW

### INDEX OF SHEETS

SHEET NO.	SHEET TITLE
T1.00	SITE INFORMATION
C1.00	EXISTING CONDITIONS
C2.00	SITE PLAN
C2.01	VEHICLE TURNING MOVEMENTS
C2.10	GRADING & EROSION CONTROL PLAN
C5.00 - C5.01	DETAILS
L1.00	LANDSCAPE PLAN
L2.00	LANDSCAPE DETAILS



COPYRIGHT STRANG, INC. 2025

REVISIONS	NO.	DESCRIPTION	DATE

DANE\_COUNTY\_CAN\_YARD

7013 E BUCKEYE RD  
MADISON, WI 53718

DATE: 3/13/2026  
DRAWING SET FOR REVIEW  
PROJECT NO. 0026D006.00

**NOT FOR CONSTRUCTION**

SITE INFORMATION

**T1.00**















