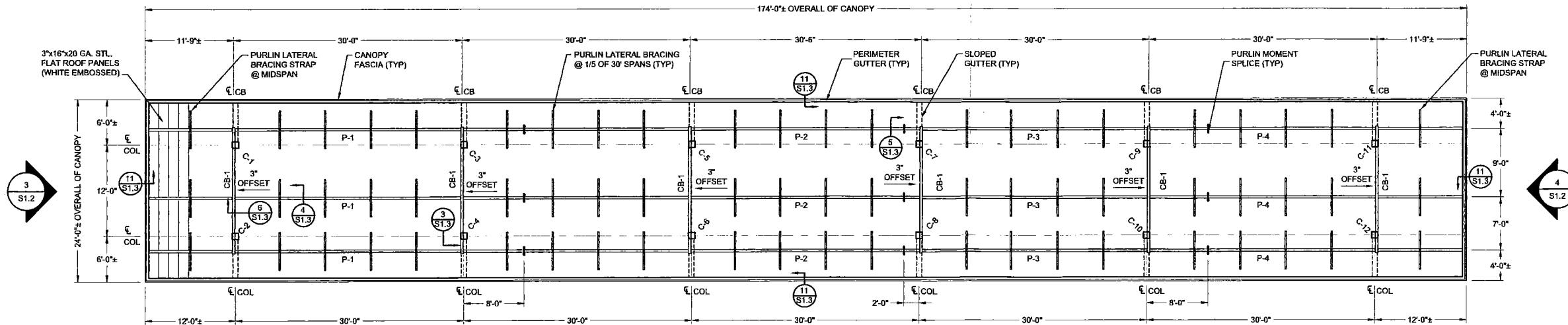
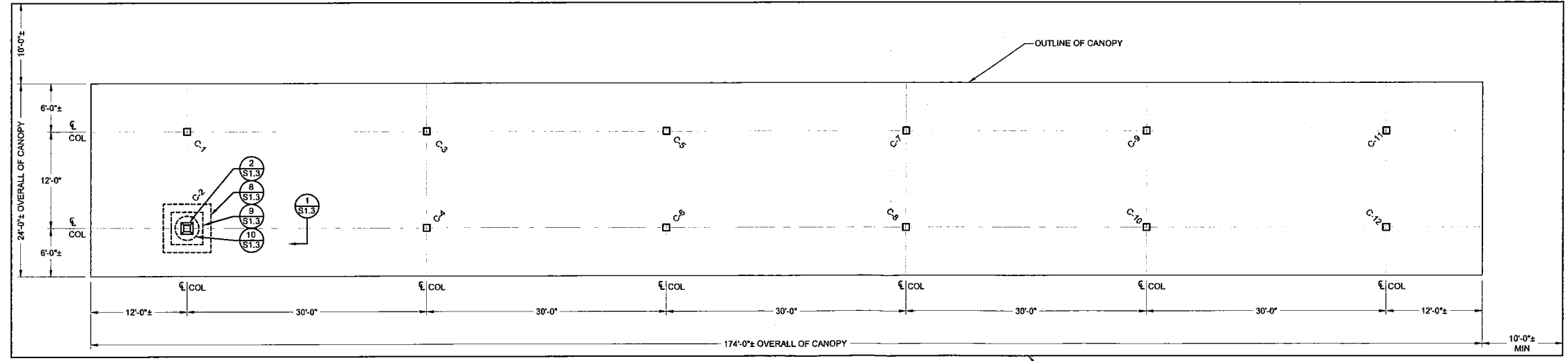


1
S1.2



1 CANOPY FRAMING PLAN
SCALE: 1/8" = 1'-0"

2
S1.2



2 CANOPY FOUNDATION PLAN
SCALE: 1/8" = 1'-0"

SHEET NOTES
ALL CONDUITS INSIDE COLUMNS WILL REQUIRE A 3"x5" INSPECTION HOLE TO BE SHOP CUT AND LOCATED WITH ITS CENTERLINE AT THE TOP OF THE SEAL OFF. ALL COLUMNS, WITH OR WITHOUT CONDUITS, WILL HAVE A STANDARD ARNING COVERPLATE INSTALLED AT THE SAME ELEVATION. TOUCH-UP PRIMER AT THE INSPECTION HOLE OPENING AFTER SHOP CUTS HAVE BEEN COMPLETED.

LEGEND

PART #	SIZE	QUANTITY
C-1	10"x10"x1/4"	1
C-2	10"x10"x1/4"	1
C-3	10"x10"x1/4"	1
C-4	10"x10"x1/4"	1
C-5	10"x10"x1/4"	1
C-6	10"x10"x1/4"	1
C-7	10"x10"x1/4"	1
C-8	10"x10"x1/4"	1
C-9	10"x10"x1/4"	1
C-10	10"x10"x1/4"	1
C-11	10"x10"x1/4"	1
C-12	10"x10"x1/4"	1
CB-1	W8X10#	6
P-1	W10X12#	3
P-2	W10X12#	3
P-3	W10X12#	3
P-4	W10X12#	3

↑ DRAIN DIRECTION

↑ PLAN NORTH

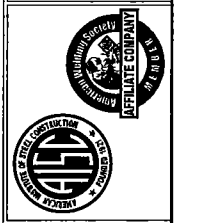
↑ BUILDING DIRECTION

DATE	DESCRIPTION	REV
03/13/18		

SCALE AS NOTED
DATE 03/13/18
DRAWN BY J. BUCKNER
CHECKED BY J.B.
DATE 03/13/18
DRAWING # 15507-DO

This is the seal of the Wisconsin State Board of Professional Engineers and Land Surveyors. It is to be used only by the licensee whose name is on the seal. It is to be used only for the work for which the licensee is licensed. It is to be used only in accordance with the rules and regulations of the Board. It is to be used only for the work for which the licensee is licensed.

STEVEN W. SCHUB
E-36483
SCOTTSDALE, AZ
PROFESSIONAL ENGINEER
03/13/18



ARNING
P.O. BOX 6, CASVILLE, WI 53503
THESE DRAWINGS AND ALL INFORMATION HEREON ARE OF A COMMERCIAL NATURE AND REMAIN THE PROPERTY OF ARNING COMPANIES, ANY USE, REPRODUCTION OR TRANSMISSION OF THIS INFORMATION WITHOUT THE EXPRESS WRITTEN PERMISSION OF ARNING COMPANIES IS STRICTLY PROHIBITED.

CUSTOMER
CASEY'S GENERAL STORES
3305 SE DELAWARE AVE
ANKENY, IA 50021

24'-0" X 174'-0" (12) COLUMN CANOPY
CANOPY LOCATION
CASEY'S GENERAL STORE
(GAS CANOPY)
MADISON, WI

REV	DESCRIPTION	DATE
AS NOTED	03/13/18	
DATE	03/13/18	
DRAWN BY	J.BUCKNER	
CHECKED BY	J.B.	
SCALE		
ARJING #	15507-DO	

This is the seal of the engineer of Arjinc Engineering, Inc. The seal is not to be used for any other project without the written consent of Arjinc Engineering, Inc. The seal is not to be used for any other project without the written consent of Arjinc Engineering, Inc.

ARJINC ENGINEERING, INC.
 15507-DO
 03/13/18

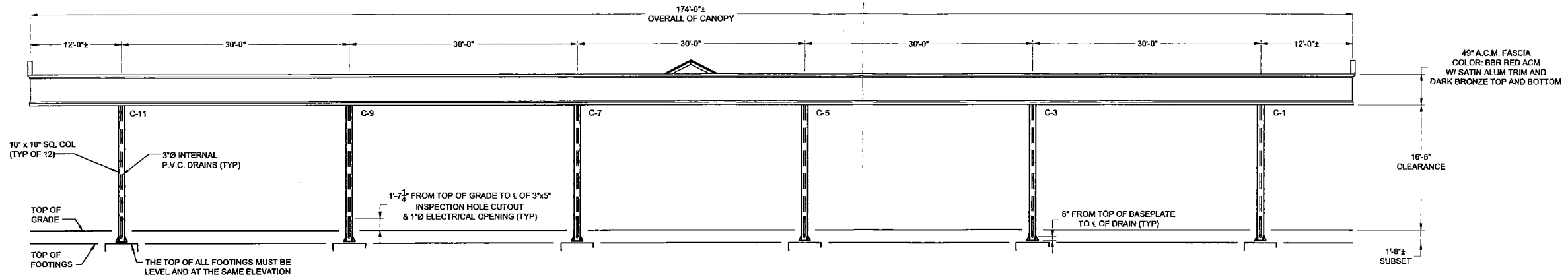
STATE OF ARIZONA
 PROFESSIONAL ENGINEERING
 STEVEN SCHULS
 E-36453
 SCOTTSDALE, AZ

ARJINC
 P.O. BOX 6, CASVILLE, MO 65225
 417-847-2331 • FAX 417-847-2881
 THIS SEAL AND SEALING THE PROPERTY OF ARJINC ENGINEERING, INC. NO REPRODUCTION OR REPRODUCTION OF THESE DRAWINGS FOR ANY PURPOSE, WITHOUT THE WRITTEN PERMISSION OF ARJINC ENGINEERING, INC. IS PERMITTED.

CUSTOMER
 CASEY'S GENERAL STORES
 3305 SE DELAWARE AVE
 ANKENY, IA 50021

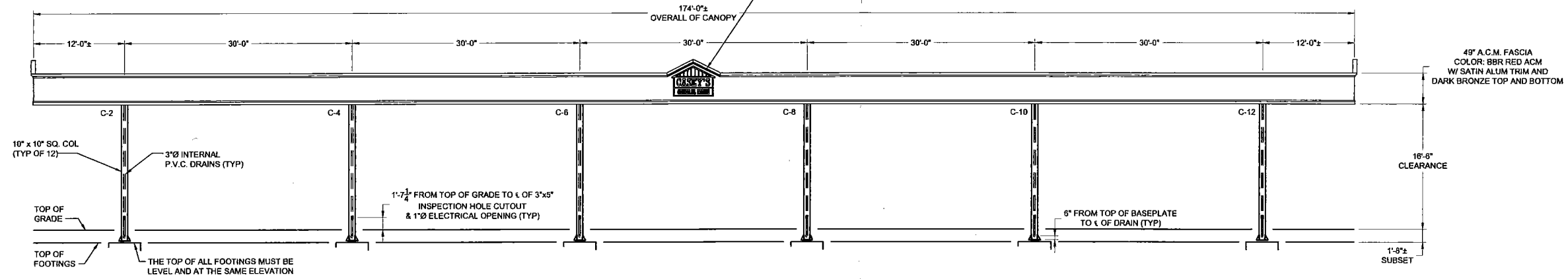
CANOPY LOCATION
 CASEY'S GENERAL STORE
 (GAS CANOPY)
 MADISON, WI

CANOPY ELEVATIONS
 15507 S1.2



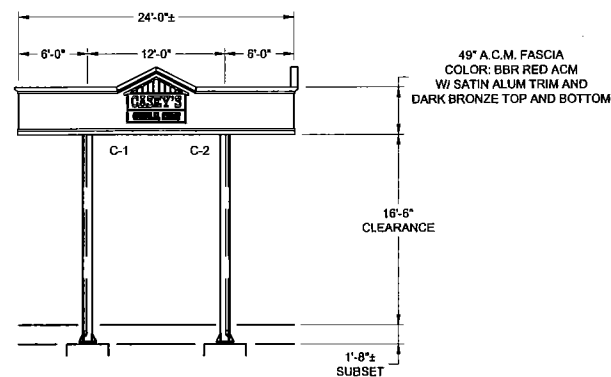
1 NORTH ELEVATION
 SCALE: 1/8" = 1'-0"

NOTE:
 (3) LIGHTWEIGHT CASEY'S FASCIA LOGOS REQUIRED:
 * (1) LOCATED ON CENTER OF EACH 24' END.
 * (1) LOCATED IN CENTER OF 174' SIDE AWAY FROM BUILDING.
 (SUPPLIED AND INSTALLED BY OTHERS)

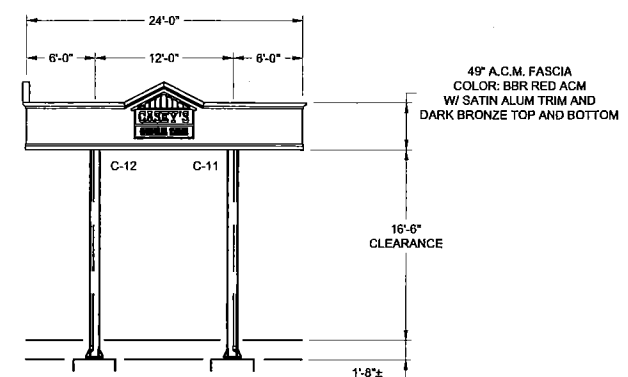


2 SOUTH ELEVATION
 SCALE: 1/8" = 1'-0"

SHEET NOTES
 ALL CONDUITS INSIDE COLUMNS WILL REQUIRE A 3"x5" INSPECTION HOLE TO BE SHOP CUT AND LOCATED WITH ITS CENTERLINE AT THE TOP OF THE SEAL OFF. ALL COLUMNS, WITH OR WITHOUT CONDUITS, WILL HAVE A STANDARD ARJING COVERPLATE INSTALLED AT THE SAME ELEVATION. TOUCH-UP PRIMER AT THE INSPECTION HOLE OPENING AFTER SHOP CUTS HAVE BEEN COMPLETED.



3 WEST ELEVATION
 SCALE: 1/8" = 1'-0"



4 EAST ELEVATION
 SCALE: 1/8" = 1'-0"