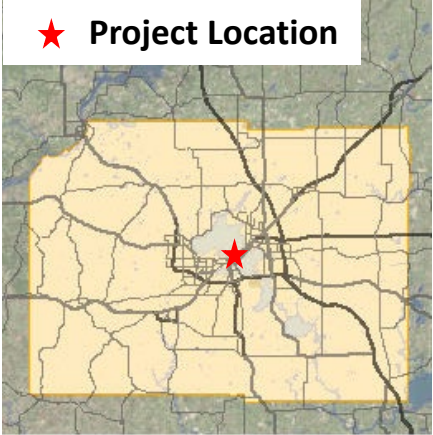
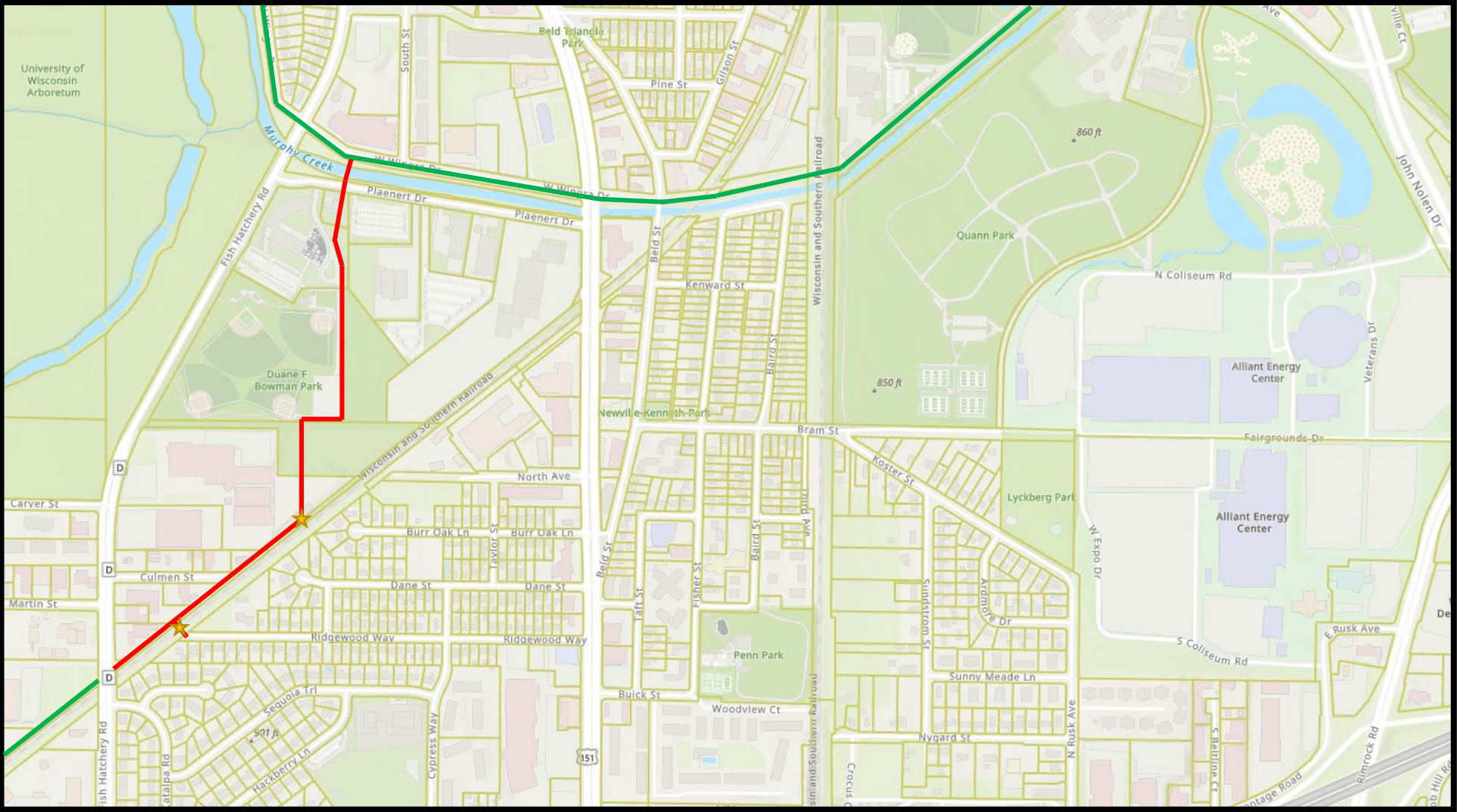


# CANNONBALL PATH: PHASE 6



## Legend

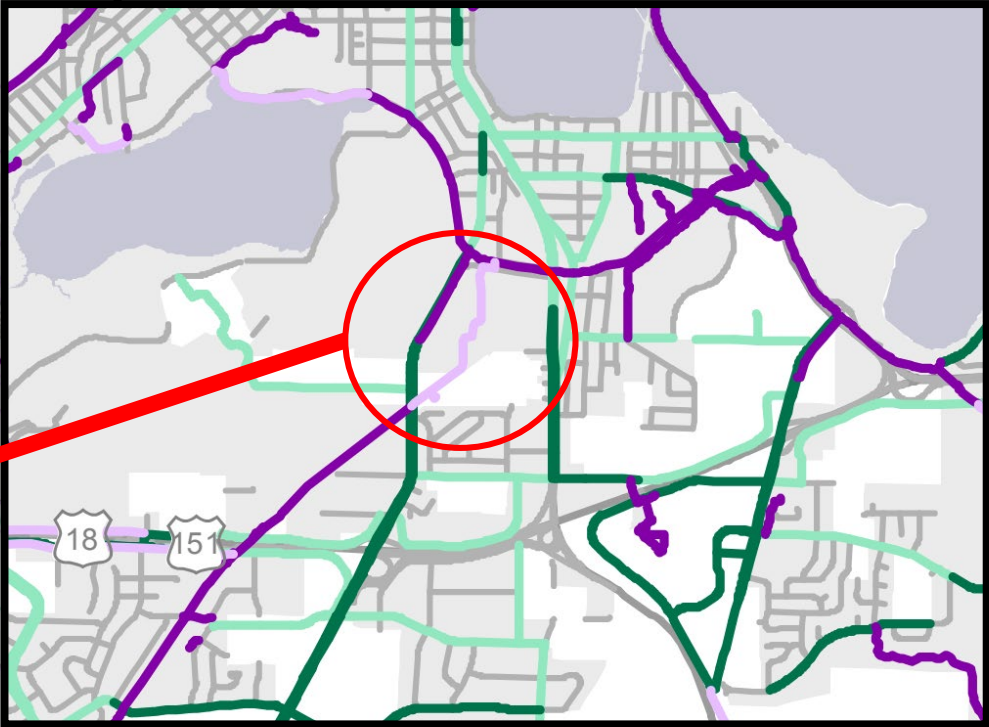
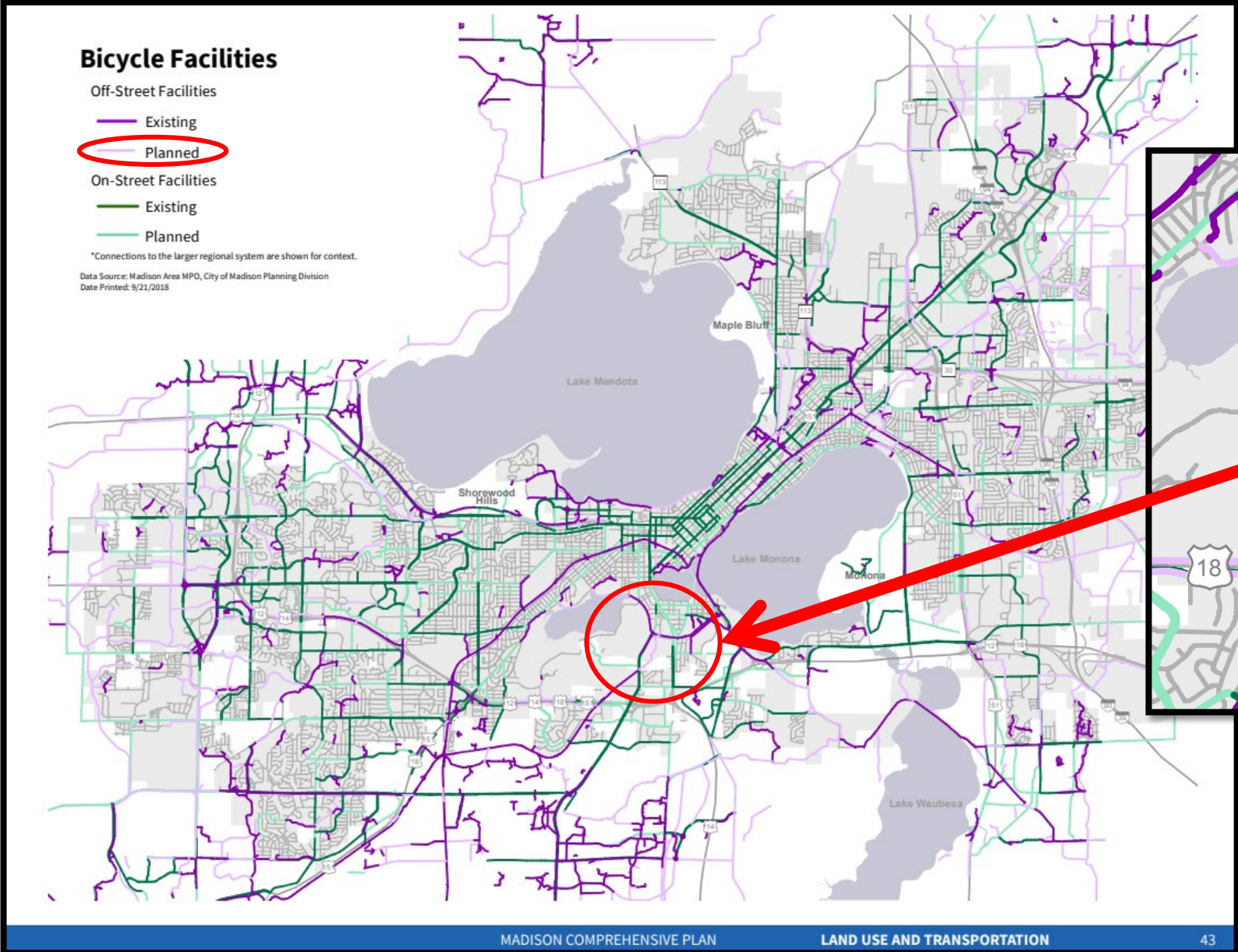
— = PROPOSED PATH

— = EXISTING PATH

★ = PROPOSED NEW RAILROAD PATH CROSSING



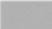

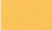






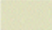
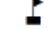



# MADISON COMPREHENSIVE PLAN (2018) – BICYCLE FACILITIES



CANNONBALL PATH: PHASE 6

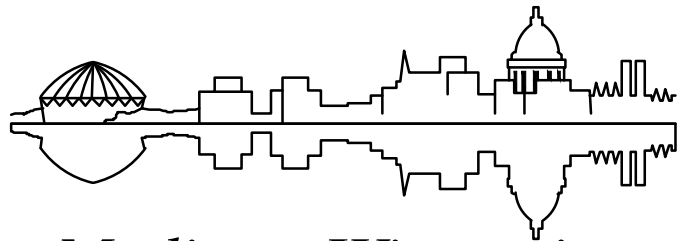
# LAND USE EXHIBIT

- |   |                       |   |                                |   |                             |
|---|-----------------------|---|--------------------------------|---|-----------------------------|
|  | Hospitals             |  | Single-Family and Two Units    |  | Industrial                  |
|  | Park                  |  | Multi-Family (3-4 units)       |  | Education and Institution   |
|  | Community Center      |  | Multi-Family (5 or more units) |  | Park and Open Space         |
|  | Library               |  | Commercial                     |  | Agricultural or Vacant Land |
|  | School                |   |                                |   |                             |
|  | Neighborhood Boundary |   |                                |   |                             |

City of Madison Department of Planning and Community & Economic Development, Planning Division 1/25/2019







Madison, Wisconsin

# CITY OF MADISON

## CITY ENGINEERING DIVISION

### DEPARTMENT OF PUBLIC WORKS

# PLAN OF PROPOSED IMPROVEMENT

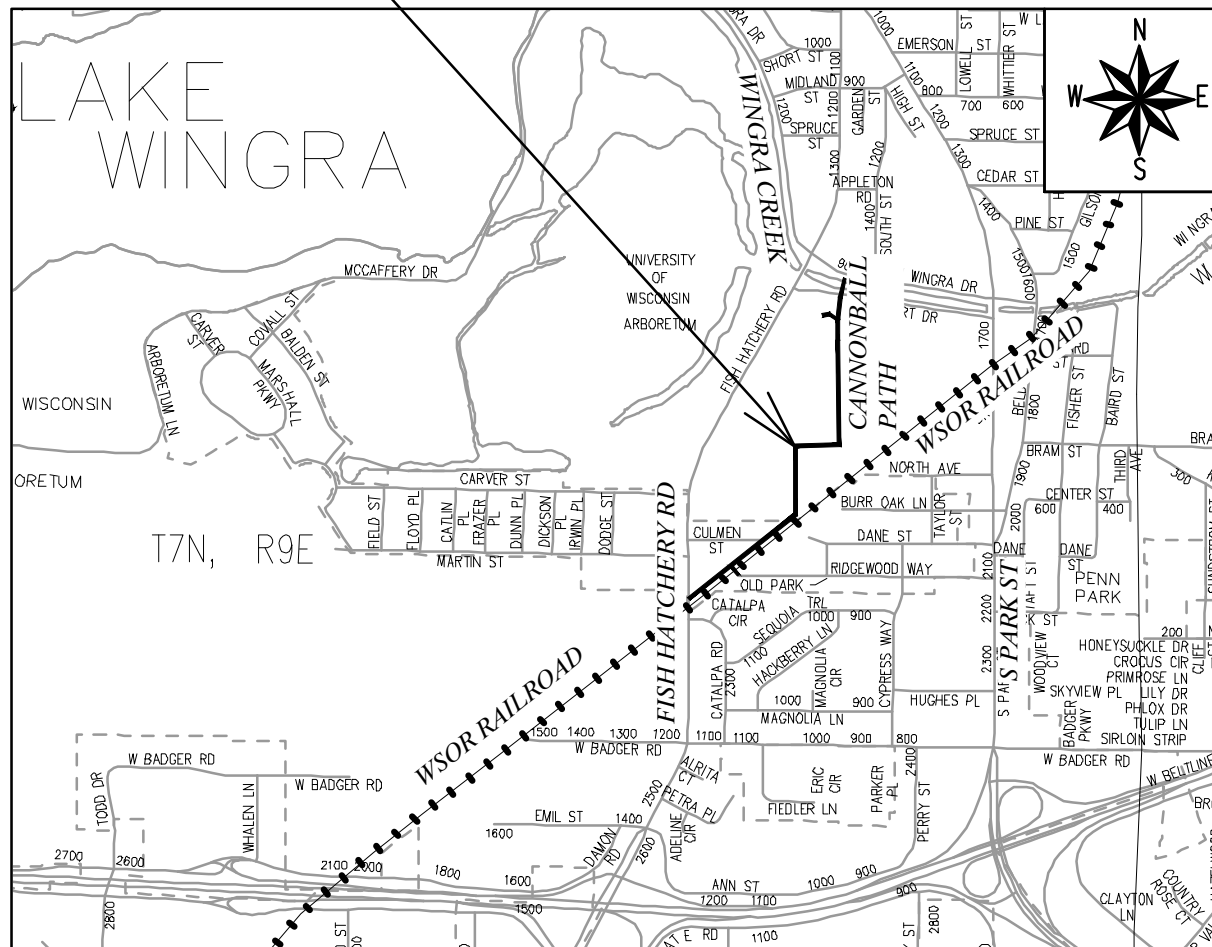
**INDEX OF SHEETS**

SHEET NO. D1-D#	NOTES AND DETAILS
SHEET NO. P1-P#	STREET PLAN & PROFILES
SHEET NO. U1-U#	UTILITY PLAN & PROFILES
SHEET NO. USAN	SANITARY SEWER SCHEDULE
SHEET NO. USTM	STORM SEWER SCHEDULE
SHEET NO. E1-E#	ELECTRICAL PLANS
SHEET NO. X1-X#	CROSS SECTIONS

**PROJECT LOCATION**

**CITY PROJECT NO. 10153**  
**CONTRACT NO. 7431**

CONVENTIONAL SIGNS	
FIELD VERIFY ALL UTILITY LOCATIONS	
GAS	— G —
STORM SEWER	— ST —
SANITARY SEWER	— SAN —
WATER	— W —
BURIED ELECTRIC	— E —
OVERHEAD ELECTRIC	— OH —
POWER POLE	□
ADA COMPLIANT RAMP W/ DETECTABLE WARNING FIELD	■
COMBUSTIBLE FLUIDS	☀



**EARTHWORK SUMMARY:**

EXCAVATION CUT (MEASURED PLAN QUANTITY) .....	???? CY
ESTIMATED UNDISTRIBUTED UNDERCUT .....	???? CY
TOTAL UNCLASSIFIED EXCAVATION CUT .....	???? CY

**NOTES:**

ALL GUTTERS SHALL DRAIN WITH A MINIMUM GRADE OF 0.50% TOWARD STORM SEWER INLETS.

SIDEWALK RAMPS SHALL HAVE A MAXIMUM SLOPE OF 1" PER 12". SIDEWALK AND CURB RAMPS SHALL BE CONSTRUCTED WITH A SIDE SLOPE OF 2.00%. SIDEWALK SHALL HAVE A MINIMUM LONGITUDINAL SLOPE OF 0.50% AND A MAXIMUM LONGITUDINAL SLOPE OF 5.00% EXCEPT WHERE STREET GRADES EXCEED 5.00%.

PUBLIC IMPROVEMENT PROJECT APPROVED

APPROVED DATE

BY THE COMMON COUNCIL OF MADISON, WISCONSIN

PUBLIC IMPROVEMENT DESIGN APPROVED BY:

City Engineer

Date

PAVEMENT MARKINGS DESIGNED BY:

STREET & PATH DESIGNED BY:

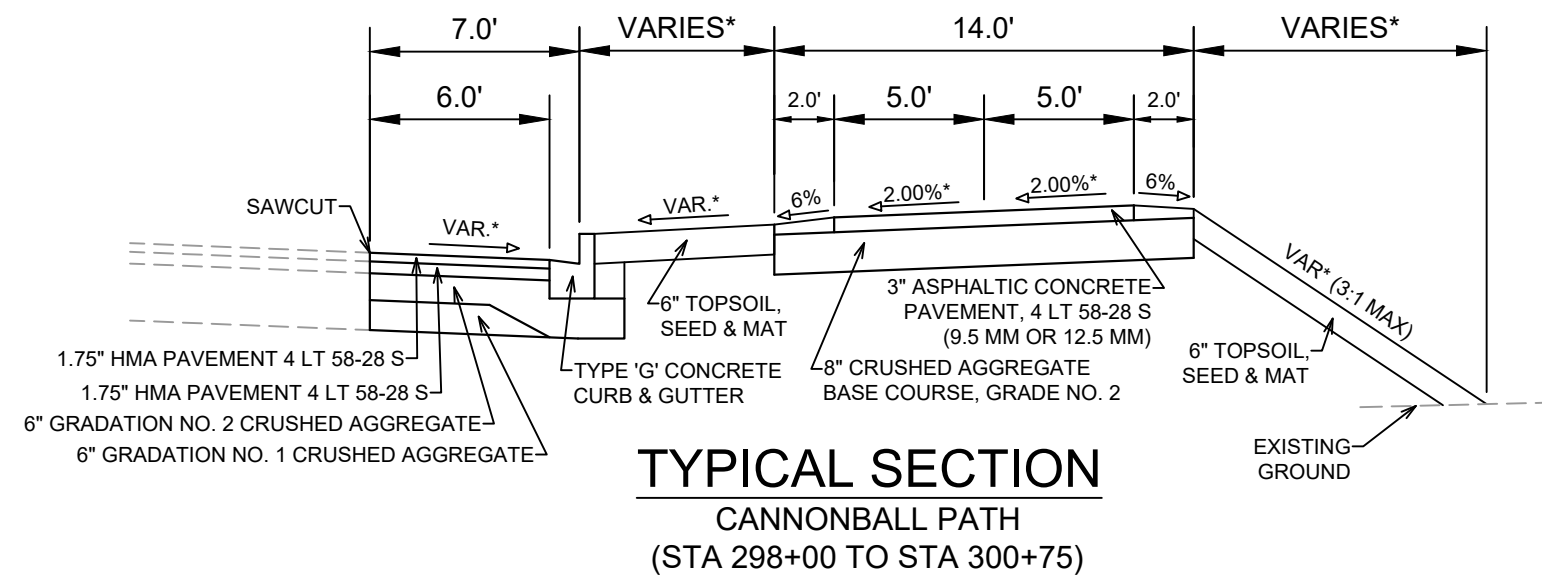
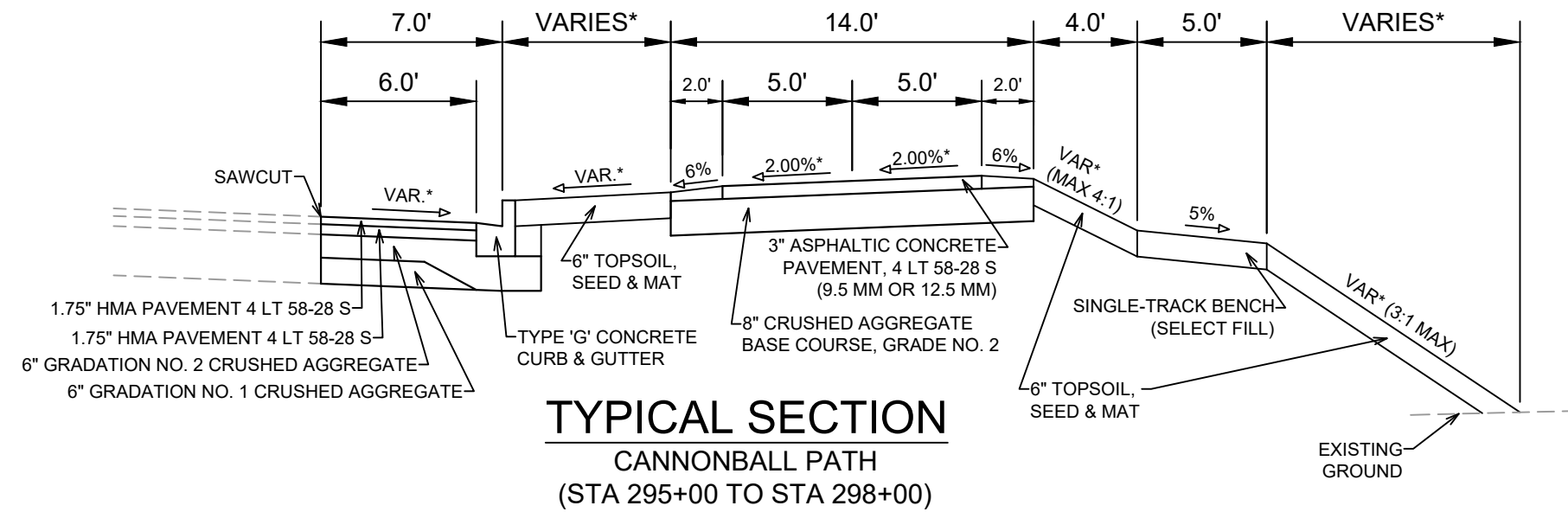
ELECTRICAL DESIGNED BY:

STORM SEWER DESIGNED BY:

BRIDGE DESIGNED BY:

SANITARY SEWER DESIGNED BY:





**NOTES:**

\* SEE PLAN AND CROSS-SECTIONS FOR DETAILS AND DIMENSIONS

\*\* TLE = TEMPORARY LIMITED EASEMENT; PLE = PERMANENT LIMITED EASEMENT; SEE RECORDED DOC. ???????

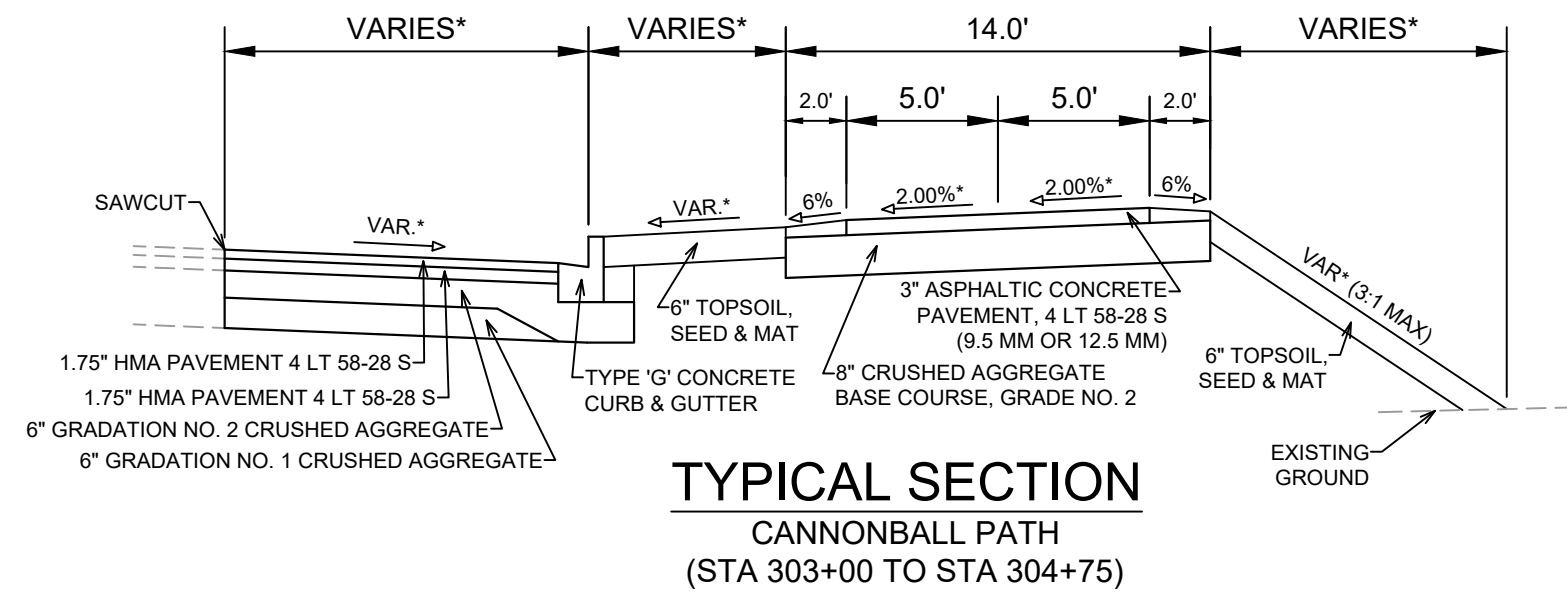
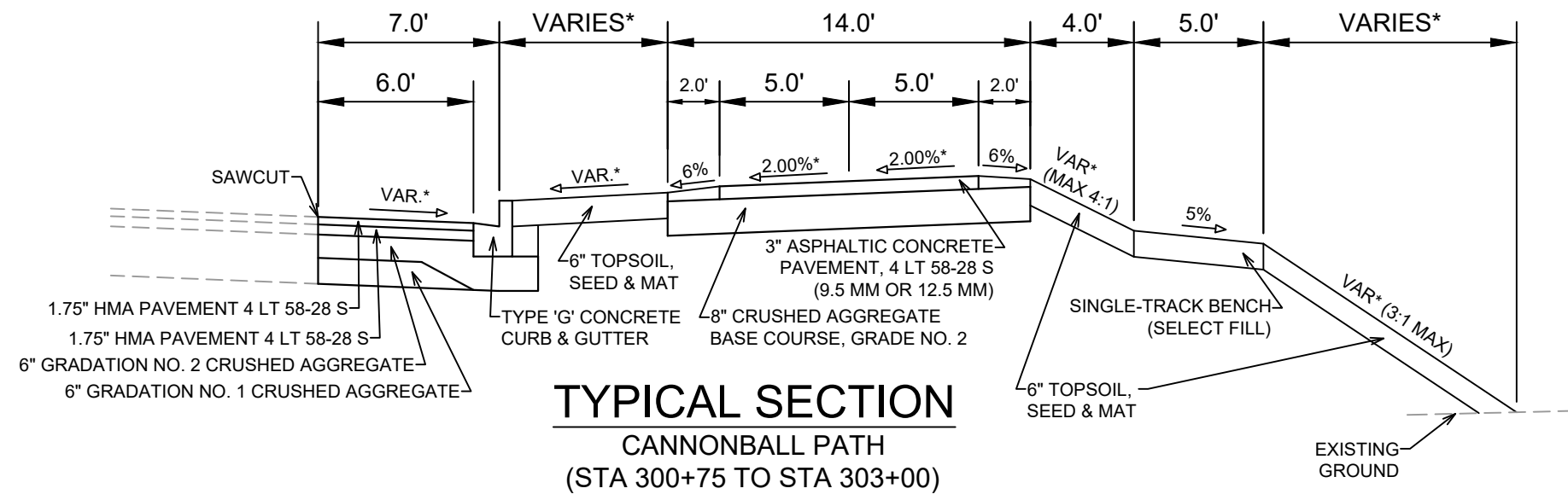
DATE	BY
REVISION	Scale: Custom
Designed By: AJC	Date: 8/27/2023 4:05 PM
MARK	10153
REVISION	10153
DATE	D-2

10153  
MADISON, WI  
7431  
CONTRACT NO:

TYPICAL SECTIONS  
CANNONBALL PATH - PHASE 6  
M:\DESIGN\Projects\10153\CAD\Streets\10153EN-Details.dwg



10153  
D-2



**NOTES:**

- \* SEE PLAN AND CROSS-SECTIONS FOR DETAILS AND DIMENSIONS
- \*\* TLE = TEMPORARY LIMITED EASEMENT; PLE = PERMANENT LIMITED EASEMENT; SEE RECORDED DOC. ????????

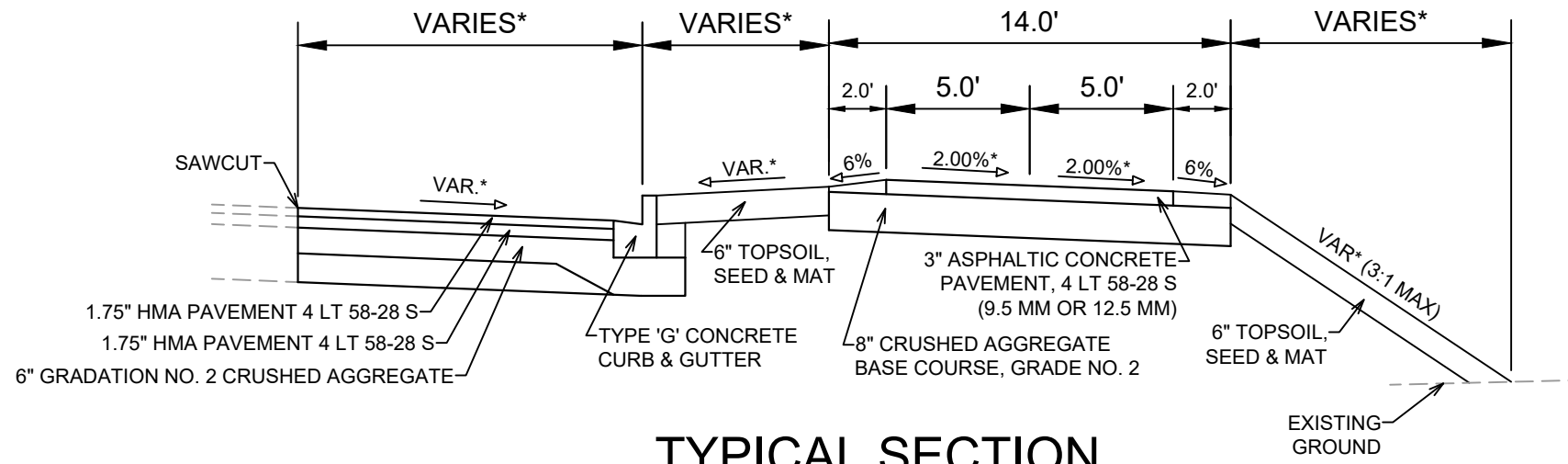
DATE	BY
REVISION	Scale: Custom
Designed By: AJC	Date: 8/27/2023 4:05 PM
MARK	10153
	D-3

10153  
MADISON, WI  
7431  
CONTRACT NO:

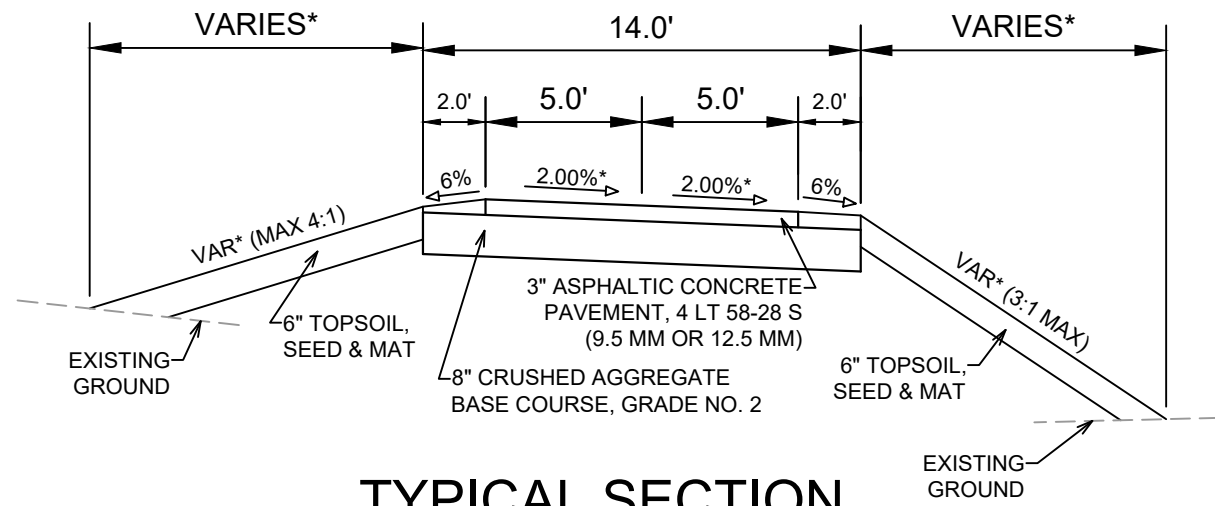
TYPICAL SECTIONS  
CANNONBALL PATH - PHASE 6  
M:\DESIGN\Projects\10153\CAD\Streets\10153EN-Details.dwg



10153  
D-3



**TYPICAL SECTION**  
 CANNONBALL PATH  
 (STA 304+75 TO STA 305+63)



**TYPICAL SECTION**  
 CANNONBALL PATH  
 (STA 305+63 TO STA 308+82)


**NOTES:**

- \* SEE PLAN AND CROSS-SECTIONS FOR DETAILS AND DIMENSIONS
- \*\* TLE = TEMPORARY LIMITED EASEMENT; PLE = PERMANENT LIMITED EASEMENT; SEE RECORDED DOC. ????????

MARK	REVISION	DATE	BY
10153	8/27/2023	4:05 PM	Custom
Designed By: AJC			Scale: Custom
Date: 8/27/2023 4:05 PM			D-4

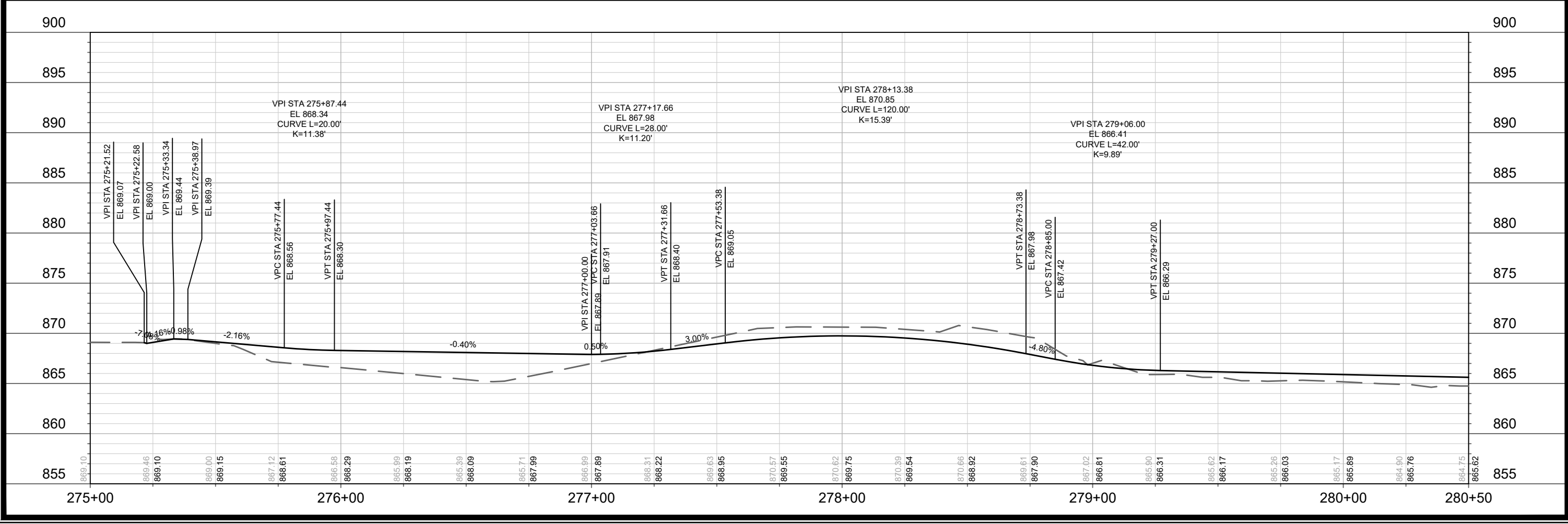
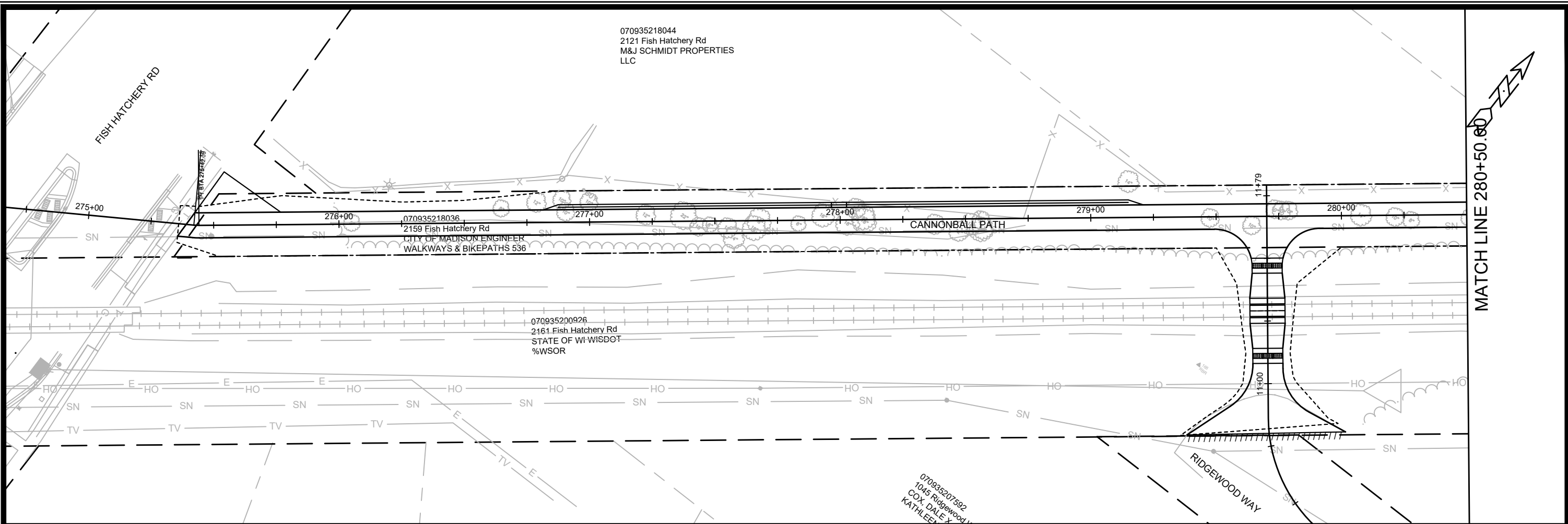
10153  
 MADISON, WI  
 CONTRACT NO: 7431

TYPICAL SECTIONS  
 CANNONBALL PATH - PHASE 6  
 M:\DESIGN\Projects\10153\CAD\Streets\10153EN-Details.dwg



10153  
 D-4





MARK	REVISION	DATE	BY
10153	10153	8/2/2023 3:37 PM	10153
Designed By: AJC			Scale: #####
Date: 8/2/2023 3:37 PM			P-1

10153  
MADISON, WI  
CONTRACT NO: 7431

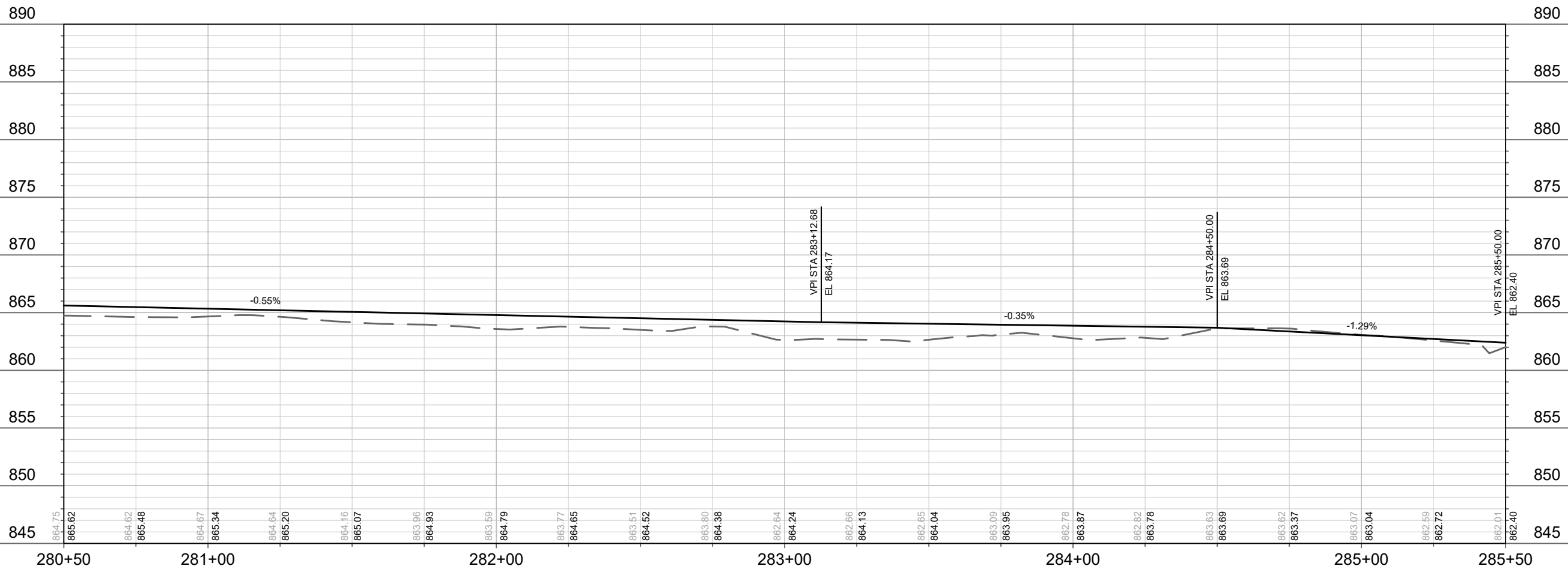
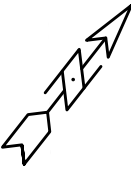
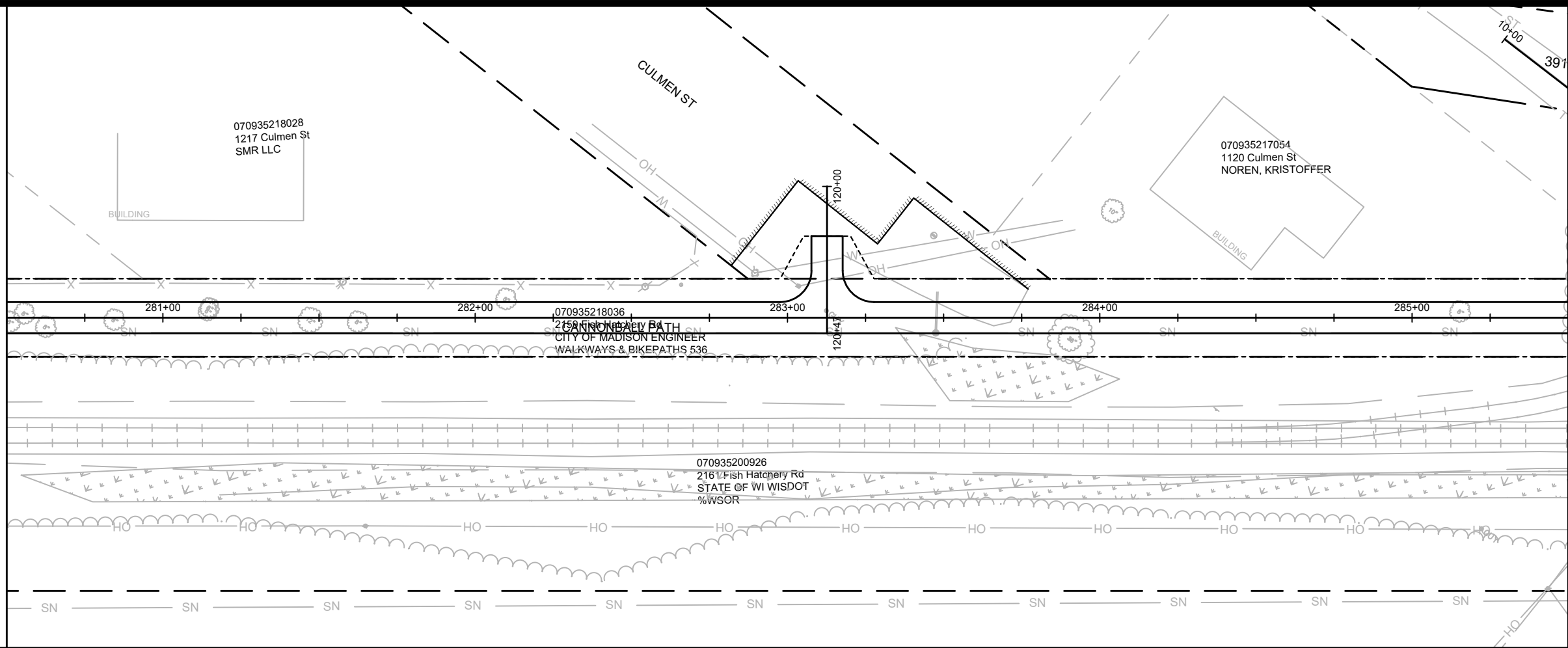
CANNONBALL PATH PH6 - PLAN & PROFILE  
CANNONBALL PATH - PHASE 6

M:\DESIGN\Projects\10153\CAD\Streets\10153EN-PnP.dwg

10153  
P-1

MATCH LINE 280+50.00

MATCH LINE 285+50.00

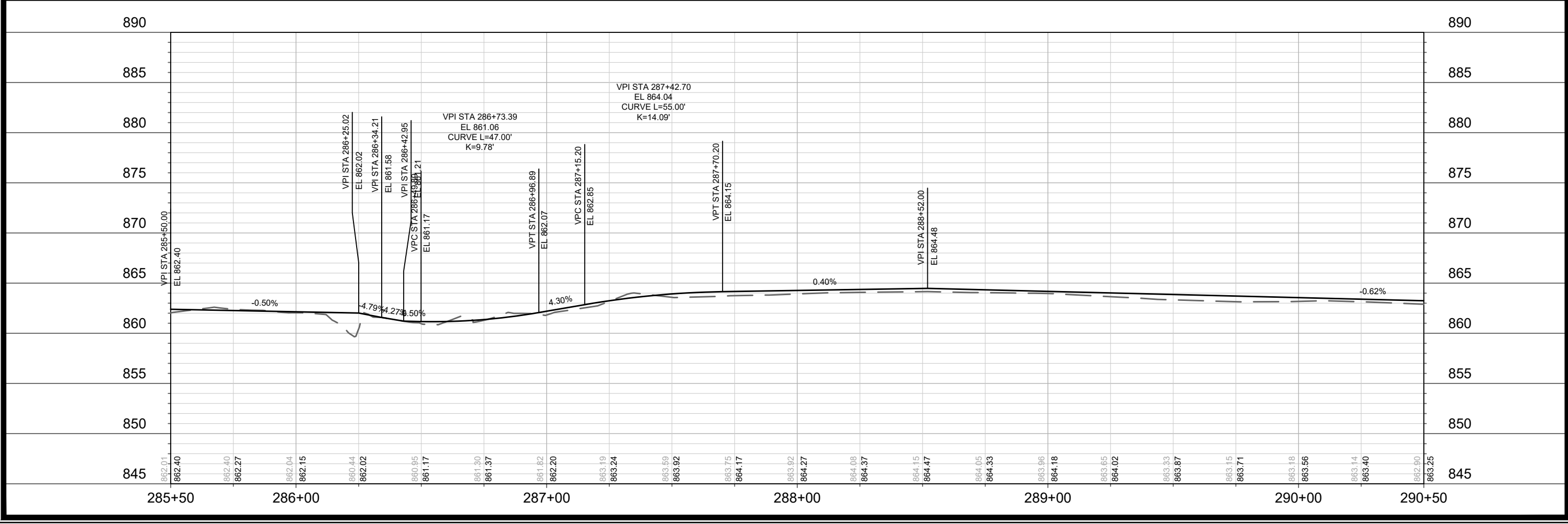
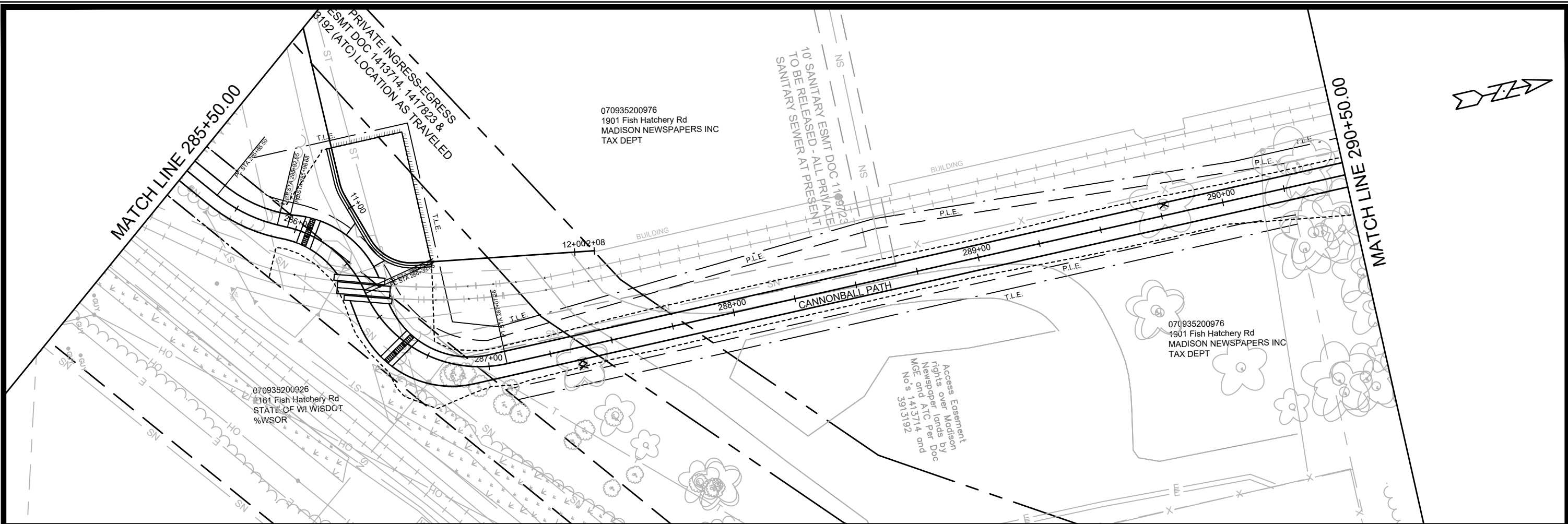


DATE	BY
REVISION	REVISION
DESIGNED BY: AJC	DATE: 8/2/2023 3:37 PM
SCALE: #####	
MARK	10153
CONTRACT NO:	7431
PROJECT:	P-2

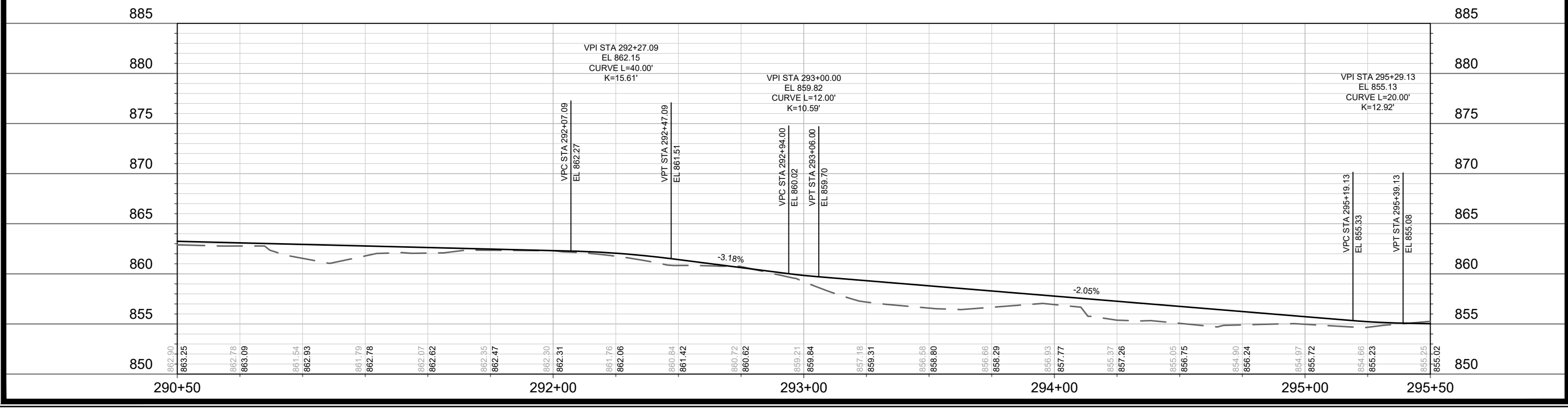
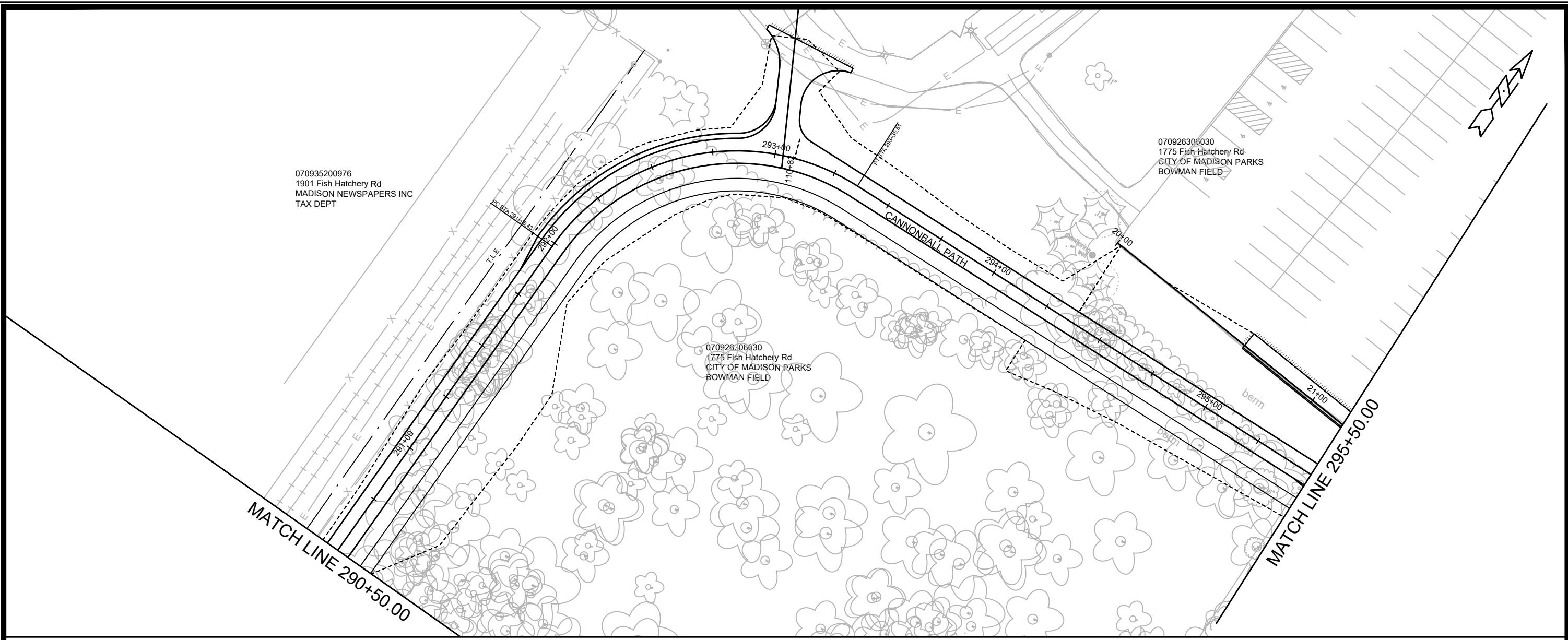
10153  
MADISON, WI  
CANNONBALL PATH PH6 - PLAN & PROFILE  
CANNONBALL PATH - PHASE 6  
M:\DESIGN\Projects\10153\CAD\Streets\10153EN-PrP.dwg



10153  
P-2



MARK	REVISION	DATE	BY	
10153		06/20/2023 3:38 PM		P-3
10153		CONTRACT NO: 7431		
10153		MADISON, WI		
CANNONBALL PATH PH6 - PLAN & PROFILE		10153		
CANNONBALL PATH - PHASE 6		P-3		
M:\DESIGN\Projects\10153\CAD\Streets\10153EN-PnP.dwg				



070935200976  
1901 Fish Hatchery Rd  
MADISON NEWSPAPERS INC  
TAX DEPT

070926306030  
1775 Fish Hatchery Rd  
CITY OF MADISON PARKS  
BOWMAN FIELD

070926306030  
1775 Fish Hatchery Rd  
CITY OF MADISON PARKS  
BOWMAN FIELD

MARK	REVISION	DATE	BY
10153		06/20/23	

10153  
MADISON, WI  
7431  
CONTRACT NO:

CANNONBALL PATH PH6 - PLAN & PROFILE  
CANNONBALL PATH - PHASE 6  
M:\DESIGN\Projects\10153\CAD\Streets\10153EN-PnP.dwg



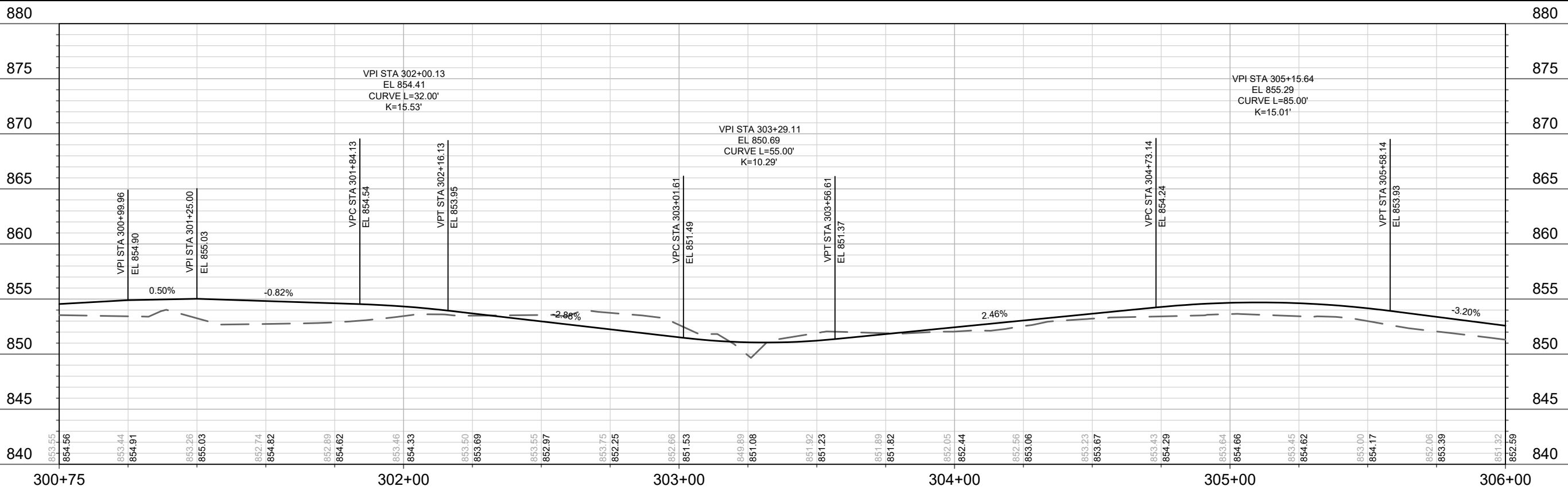
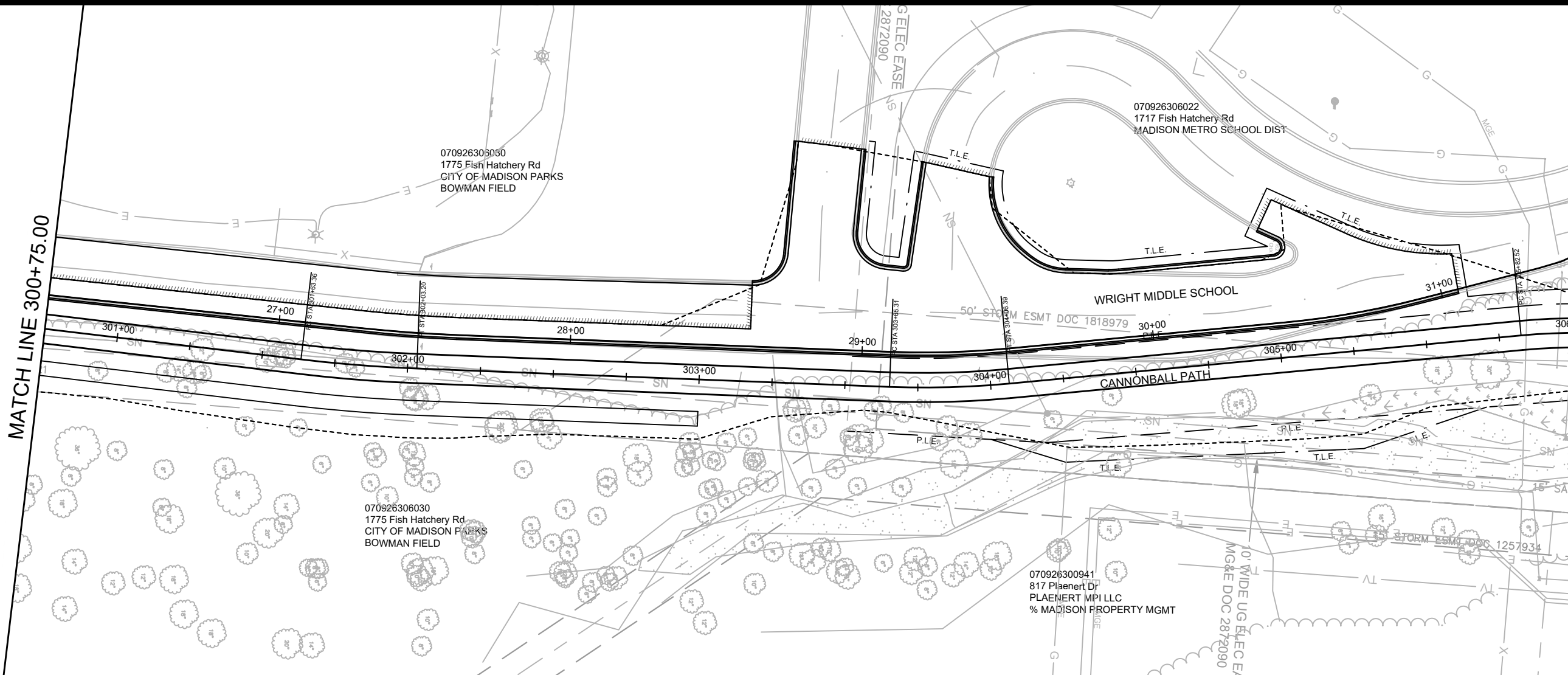
10153  
P-4





MATCH LINE 300+75.00

MATCH LINE 306+00.00



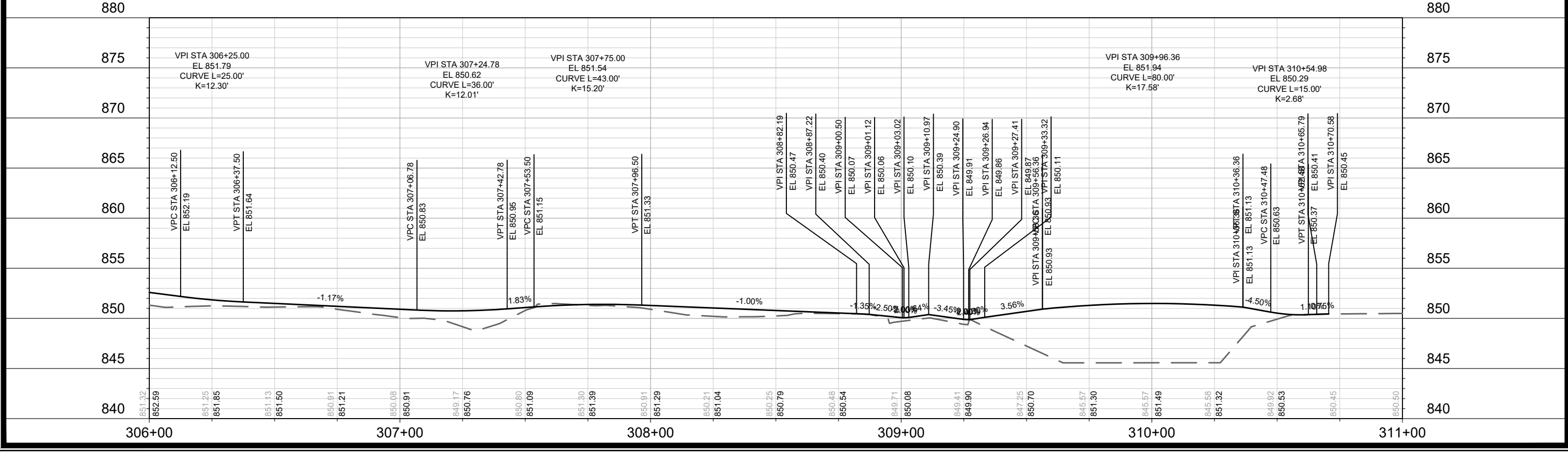
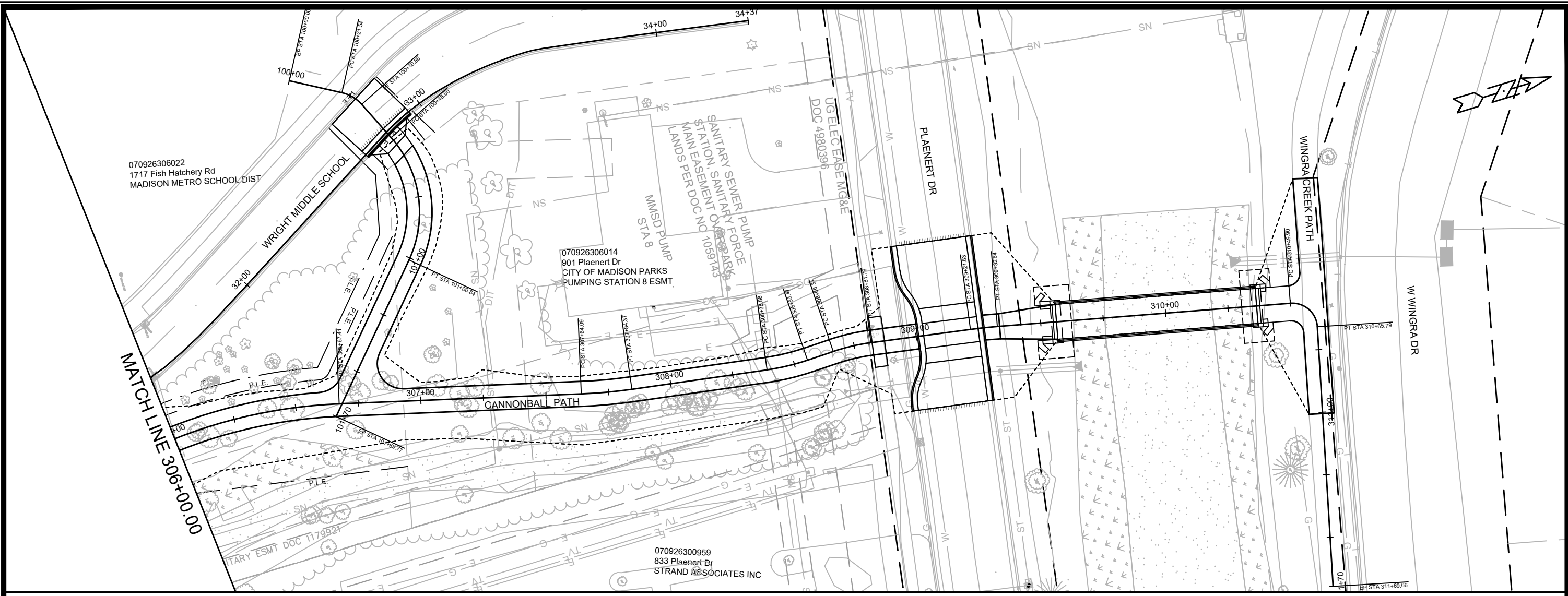
MARK	REVISION	DATE	BY
10153	10153	8/2/2023 3:38 PM	P-6

10153  
MADISON, WI  
7431  
CONTRACT NO:

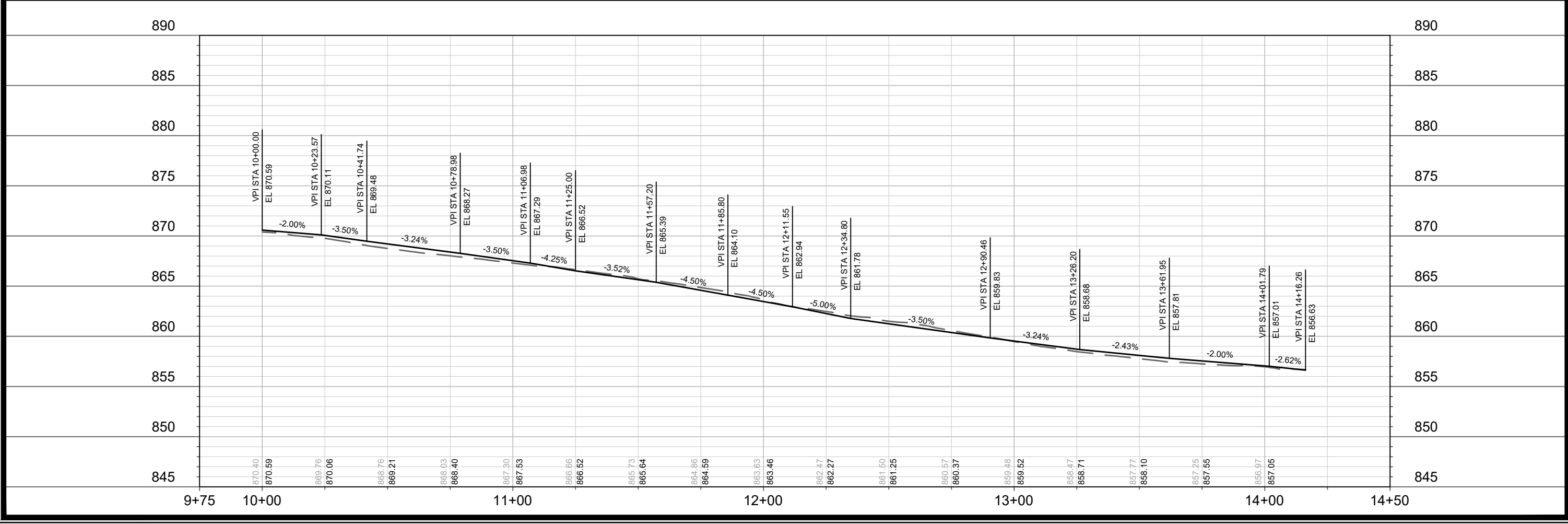
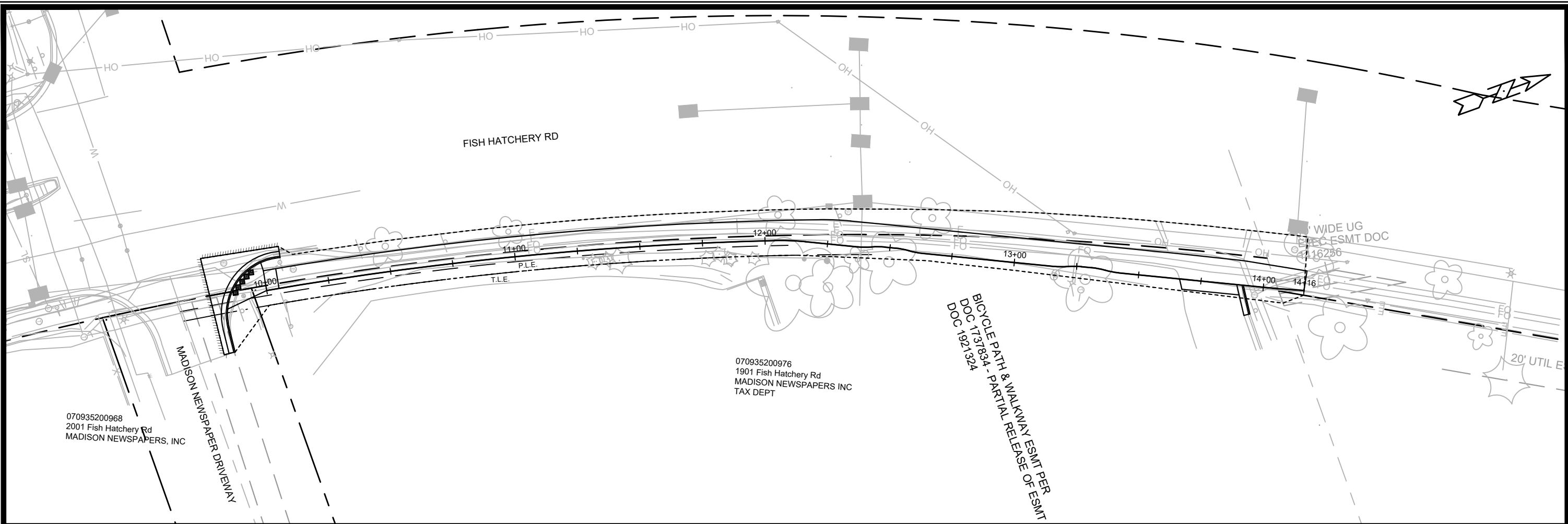
CANNONBALL PATH PH6 - PLAN & PROFILE  
CANNONBALL PATH - PHASE 6  
M:\DESIGN\Projects\10153\CAD\Streets\10153EN-PnP.dwg



10153  
P-6



<b>10153</b> <b>P-7</b>	<b>10153</b> <b>MADISON, WI</b> <b>7431</b> <b>CONTRACT NO:</b>
<b>CANNONBALL PATH PH6 - PLAN &amp; PROFILE</b> <b>CANNONBALL PATH - PHASE 6</b>	<b>10153</b> <b>MADISON, WI</b> <b>7431</b> <b>CONTRACT NO:</b>
M:\DESIGN\Projects\10153\CAD\Streets\10153EN-PnP.dwg	<b>10153</b> <b>MADISON, WI</b> <b>7431</b> <b>CONTRACT NO:</b>
<b>10153</b> <b>P-7</b>	<b>10153</b> <b>MADISON, WI</b> <b>7431</b> <b>CONTRACT NO:</b>
<b>10153</b> <b>P-7</b>	<b>10153</b> <b>MADISON, WI</b> <b>7431</b> <b>CONTRACT NO:</b>



MARK	REVISION	DATE	BY
10153	10153	8/2/2023 3:39 PM	10153
Scale: #####		P-8	

10153  
MADISON, WI  
7431  
CONTRACT NO:

FISH HATCHERY RD SIDEWALK - PLAN & PROFILE  
CANNONBALL PATH - PHASE 6

M:\DESIGN\Projects\10153\CAD\Streets\10153EN-PnP.dwg

10153  
P-8





