

APPETIZERS

EDAMAME 枝豆	3.95	LOTUS ROOT 蓮根	3.95
SPICY MENMA スパイシーメンマ	1.95	SRIRACHA BROCCOLI W/ BACON BITS ブロッコリー	6.95

SUI GYOZA

水餃子 Boiled dumplings with spicy ponzu sauce
水餃子をスパイシーなポン酢で

6.95 / 6pcs

CHICKEN 鶏肉	SHRIMP 海老
PORK 豚肉	VEGETABLE 野菜

YAKI SOBA

Kansai style stir fried noodles. Topped with fried sunny side up eggs and pepperoni slices. Served with dashi broth on the side.

KURO BUTA	13.95
TURKEY	13.95
SPICY CLAMS & PORK	13.95
SAUSAGE	13.95
SPICY CRAB	15.95
VEGETABLE	11.95

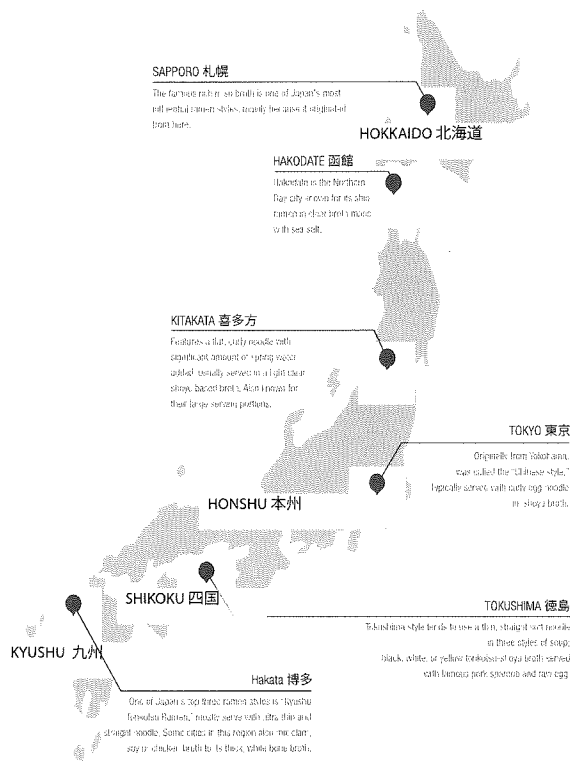
DONBURI

SASHIMI OVER RICE		MEAT & VEGETABLE OVER RICE	
CAT RICE	12.95	BELLY DON	13.95
KANI DON (SPICY CRAB)	9.95	MEAT LOVER	13.95
SPICY SCALLOPS & UNI	11.95	VEGETABLE DON	10.95
IKURA DON	9.95	CHASHU DON	8.95
KAISEN DON	16.95	TURKEY DON	8.95

CHAZUKE

Warm Japanese rice served in homemade dashi broth with Wakame and roasted brown rice flakes

TURKEY	7.95
KURO BUTA SAUSAGE	7.95
OSHINKO	6.95
TOFU	6.95



RAMEN HISTORY

Contrary to popular belief, ramen originated in China before traveling into Japan and Japanese cuisine. Some believe that "ramen" is the Japanese pronunciation of the Chinese word "lamian," meaning "hand-pulled noodles."

Nearly every region in Japan has its own variation of ramen; while you wait for your ramen, please refer to our "Ramen Map" to know more about the Ramen Culture. Slurp up!

BEVERAGES

Ask server for flavor options

飲物			
POP 1.95 made in U.S.	ROYAL MILK TEA 2.95 black tea infused with milk	CREAM SODA 2.95 white cream or melon cream	
RAMUNE 2.95 Japanese marble drink	OI OCHA 2.95 unsweetened green tea		

DESSERT

GREEN TEA ICE CREAM MOCHI	3.95
RED BEAN ICE CREAM MOCHI	3.95
SASA DANGO	3.95
TIRAMISU	5.95

Gratuity of 18% will be automatically added to parties of 5 or more. No split checks. Maximum of 3 credit cards per check.

PROMO 特典

#STRINGSRAMEN ON ANY SOCIAL MEDIA TO GET FREE EDAMAME FOR YOUR TABLE OR AJITSUKE TAMAGO

DON'T FORGET YOUR LOYALTY STAMP CARD

WE OFFER STRINGZ GIFT CERTIFICATES

CONSUMER ADVISORY:

CONSUMING RAW OR UNDERCOOKED MEATS, POULTRY, SEAFOOD, SHELLFISH, OR EGGS MAY INCREASE RISK OF FOODBORNE ILLNESS ESPECIALLY IF YOU HAVE CERTAIN MEDICAL CONDITIONS

@stringsramen
@stringsramen

SHOYU RAMEN

Seaweed dashi with soy sauce

しょうゆラーメン

Topping Choices

MIKKUSU YASAI ミックス野菜	9.95
KURO BUTA LOIN 黒豚 チャーシュー	13.95
KURO BUTA BELLY 黒豚 チャーシュー	13.95

main ingredients

Wasabi or Scallion oil
Menma, nori, bean sprouts, red ginger



MISO RAMEN

Trio miso, chicken & turkey bone stock

味噌ラーメン Vegetarian option available

Topping Choices

SPICY CRAB (WITH PORK)	15.95
KURO BUTA LOIN 黒豚 チャーシュー	13.95
KURO BUTA BELLY 黒豚 チャーシュー	13.95
TURKEY 火鶏	12.95

main ingredients

Black mayu oil and butter
Corn, scallions, bean sprouts, and crushed garlic



TONKOTSU RAMEN

Creamy pork bone stock

豚骨ラーメン

Topping Choices

KURO BUTA LOIN 黒豚 チャーシュー	13.95
KURO BUTA BELLY 黒豚 チャーシュー	13.95
SPICY CLAM & PORK スパイシーなアサリと豚肉	13.95

main ingredients

Black mayu oil and garlic oil
Crushed garlic, sesame seed, scallions, and menma



HELL RAMEN

地獄ラーメン Vegetarian option available

Jigoku (Hell) ramen is our Chicago ramen special made with the spiciest ingredients. Jigoku ramen uses a shoyu broth base topped with asari, ground pork, crispy pork skin, and hot pepper and chili made from hell.

LEVEL 1	TOUKATSU とうかつ	13.95
	Chinese Tian Jing red chili, Szechuan chili bean sauce and Thai chili	
LEVEL 2	KOKUJOU こくじょう	14.95
	Chinese Tian Jing red chili, Szechuan chili bean sauce and Thai chili	
LEVEL 3	SHUGOU しゅうこう	15.95
	Chinese Tian Jing red chili, Szechuan chili bean sauce, Thai chili, Piquin chili and Ghost peppers	
LEVEL 4	KYOKAN きょうかん	16.95
	Chinese Tian Jing red chili, Szechuan chili bean sauce, Thai chili, Piquin chili and Ghost peppers	
LEVEL 5	DAIKYOKAN だいきょうかん	25.95
	Chinese Tian Jing red chili, Szechuan chili bean sauce, Thai chili, Piquin chili, Ghost peppers and Scorpion pepper	

MONSTER HELL RAMEN CHALLENGE.

Suffer through our LEVEL 5 hell ramen challenge (with all broth) in 20 minutes and receive a \$50 gift certificate, free Monster Hell T-Shirt and your bowl free!!

激辛!! レベル5の辛さ20分以内に完食で無料!!

WARNING: We are not liable for any health problems due to the spiciness.

Buy our Monster Hell Ramen Challenge T-Shirt \$19.95

SIDES

エキストラ

AJITSUKE TAMAGO 味付け玉子	0.95	KURO BUTA LOIN 黒豚	5.95
OSHINKO MORIAWASE お新香盛り合わせ	3.95	KURO BUTA BELLY 黒豚	6.95
TOASTED GARLIC 炙りニンニク	1.95	ONSEN TOMAGO	0.95

RAMEN GUIDE 101

- Do not wait. Eat our homemade ramen right away!
- Mix the broth and take a slurp.
- Soak the nori in the broth and eat within the first few slurps
- Head for the noodles and slurp them up, loudly.
- Once noodles are gone, enjoy the rest of your soup or order Kae Dama.
- Get your loyalty card stamped!

It should take no more than 10 minutes to finish your bowl.

RAMEN TERMINOLOGY

ajitsuke Tamago - Marinated Lava Egg	chawanaboshi - Fish Cake
asari - Saaghi Pickled Ginger	chawan - Roasted Seaweed Sheet
chawan - Seaweed Broth	chawanaboshi - Pickled Vegetables
asari - Salmon Roe	chawanaboshi - Red Bean Nocchi in Bamboo Leaf Wrap
asari - Clam	chawanaboshi - Rice Cake
chawanaboshi - Wood Ear Mushroom	chawanaboshi - Sea Urchin
chawanaboshi - Berkshire Pig	chawanaboshi - Japanese seven spice
chawanaboshi - Bamboo Shoot	

KAE DAMA

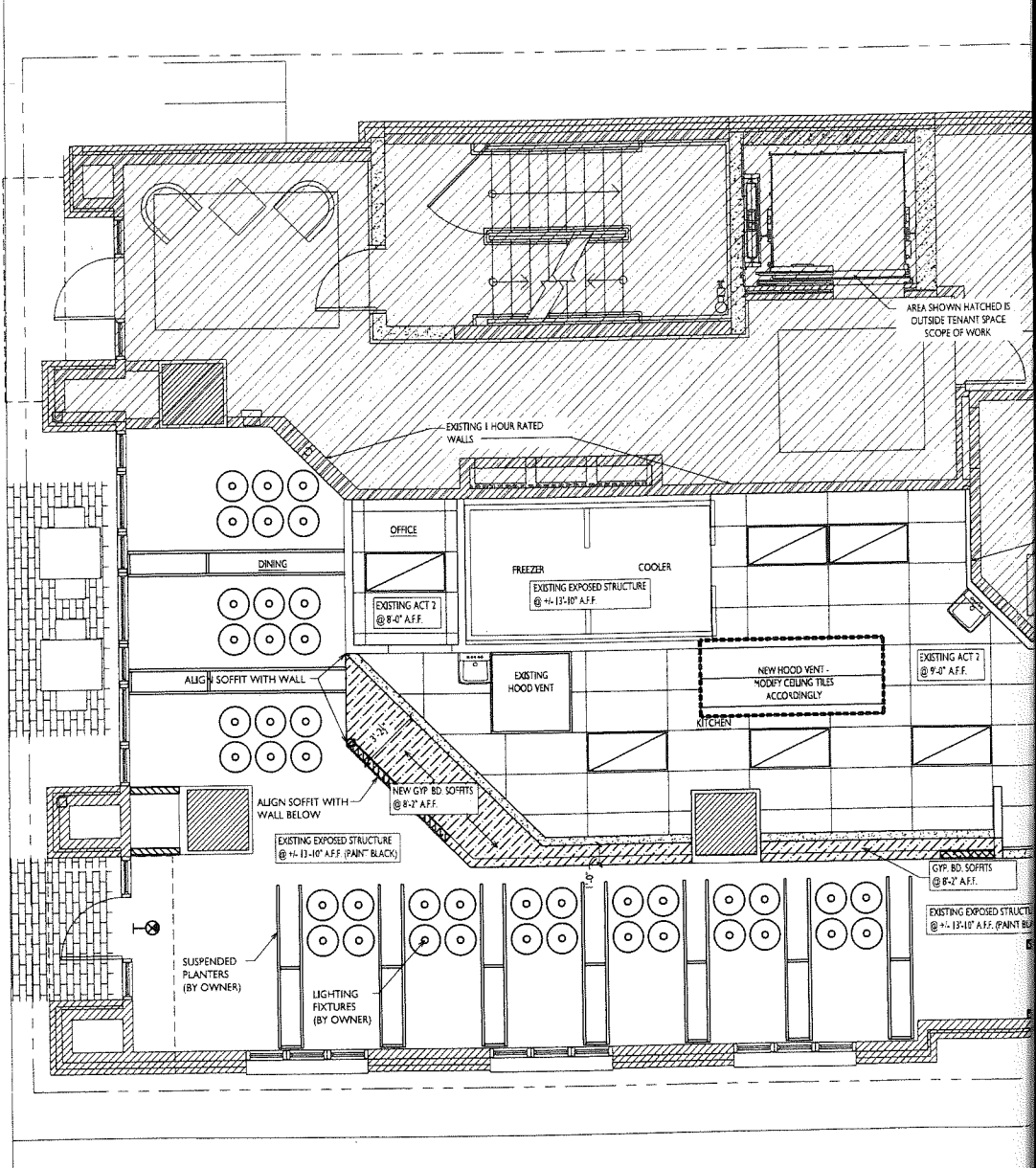
かえ玉

EXTRA NOODLES FOR THE REMAINING SOUP

Full order 1.95
Half order 1.25

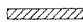




Level up your ramen with Hell Sauce 0.95

RECOMMENDED: RAMEN BOWL NOT MEANT FOR SHARING



1 REFLECTED CEILING PLAN
 A-8.1 1/4" = 1'-0"

CEILING SCHEDULE	
ACT #1 =	2x2'x4" ARMSTRONG ULTIMA w/ BEVELED REGULAR EDGE (MATCH EXISTING) IN 1/4" WHITE EXPOSED WHITE TEE GRID
ACT #2 =	2x4'x8" VINYL FACED GYPSUM TILES (MATCH EXISTING) IN 1/4" EXPOSED WHITE TEE GRID

LEGEND	
	EXISTING BUILDING OUTSIDE TENANT SPACE
	NEW / ALTERED WALL
	EXISTING WALL
	NEW / MODIFIED SOFFIT
	DEMO / MODIFY DROP CEILING

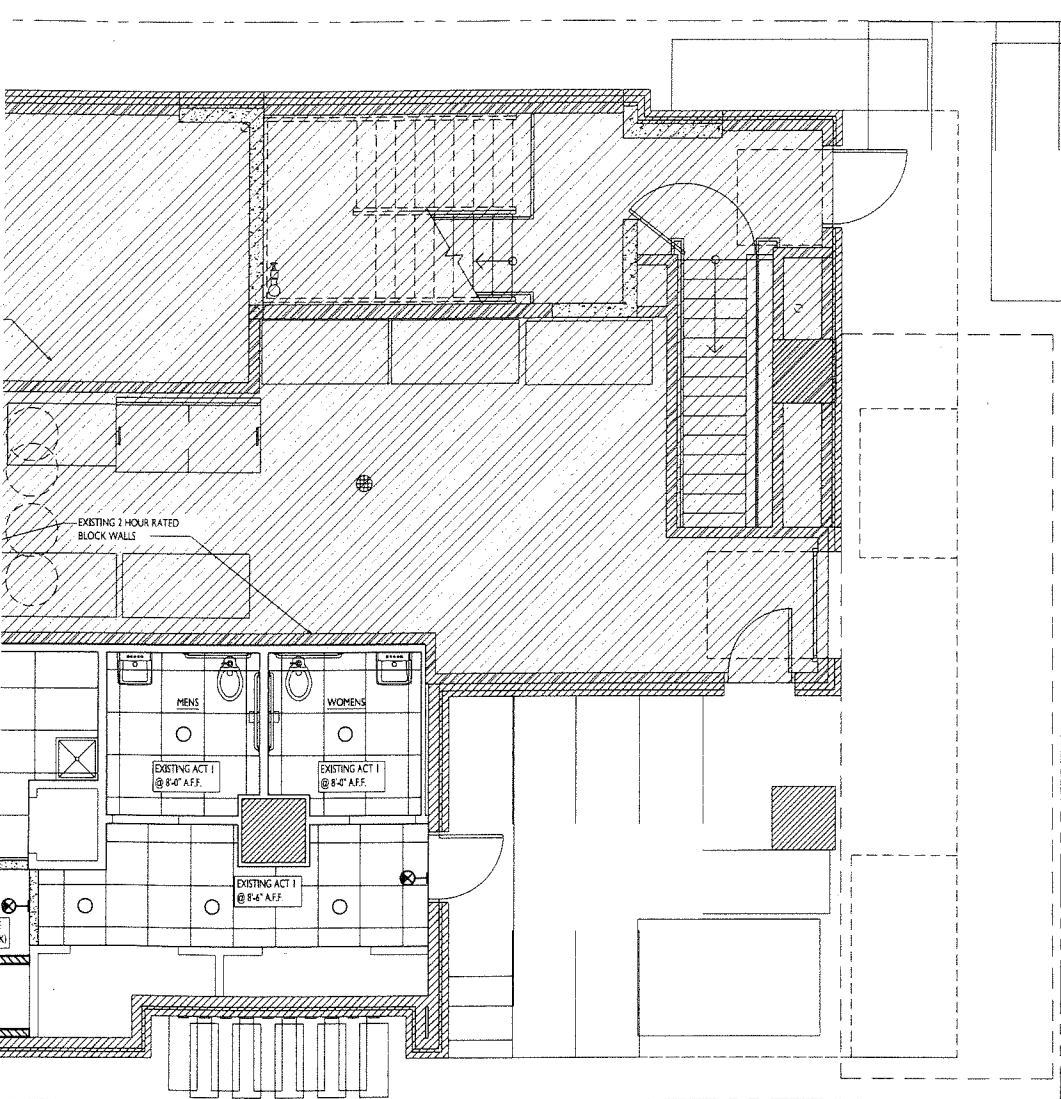
REFLECTED CEILING NOTES

1. ALL DROPPED SOFFITS / BULKHEADS TO BE CONSTRUCTED OF GYPSUM BOARD ON FINISHED METAL FRAMING
2. NEW SOFFIT AT FRONT LINE TO MATCH EXISTING SOFFIT HEIGHT
3. REPAIR / REPLACE DROP CEILING WHERE WALL HAS BEEN REMOVED. MATCH EXISTING
4. REPAIR / REPLACE DROP CEILING AT NEW VENT HOOD. MATCH EXISTING
5. REPAINT EXPOSED CEILING - (SEE FINISH SCHEDULE)
6. PAINT ACT-1 (SEE FINISH SCHEDULE)



knothe & bruce
ARCHITECTS

Phone: 7601 University Ave, Ste 201
608.836.3690 Middleton, WI 53562



ISSUED
Issued for Plan Review - TBD

PROJECT TITLE
STRINGS RAMEN

City View Building
Madison WI,
SHEET TITLE
**Reflected Ceiling
Plan**

SHEET NUMBER

A-8.1

PROJECT NO. **1704**
© Knothe & Bruce Architects, LLC

