

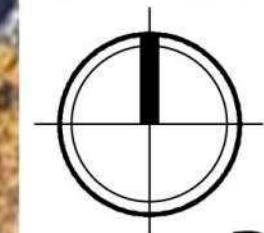


# 7601 Mineral Point Road



Locator Map  
7601 Mineral Point Rd  
Madison, WI





Aerial Site Plan  
Pizzeria Uno Site Redevelopment  
7601 Mineral Point Rd, Madison, WI  
September 22, 2021



CITY OF MADISON LANDSCAPE WORKSHEET

City of Madison, WI Landscape Worksheet  
Planned Development District  
09/16/2020

DEVELOPED LOTS	SQUARE FEET	LANDSCAPE POINTS REQ.
Total Developed Area	24,677	411
47,763 (lot) - 23,086 (building footprint)		

PLANT TYPE / ELEMENT	POINT VALUE	QUANTITY	TOTAL POINTS
Overstory Deciduous	35	4	140
Tall Evergreen Tree	35	0	0
Ornamental Tree	15	6	90
Upright Evergreen Shrub (i.e. arborvitae)	10	0	0
Shrub, deciduous	3	130	390
Shrub, evergreen	4	12	48
Ornamental Grasses/Perennials	2	292	584
Ornamental/Decorative Fencing or Wall (4pts / 10LF)	4		0
Existing Significant Specimen Tree	14		0
Landscape Furniture for public seating and/or transit connections	5		0
<b>POINTS PROVIDED</b>			<b>1252</b>

PLANT LIST

KEY	SCIENTIFIC NAME	COMMON NAME	QTY	SIZE	ROOT	STEM
<b>DECIDUOUS TREES</b>						
AF	<i>Acer x freemanii 'Jefersred'</i>	Autumn Blaze Maple	2	2"	B&B	
UN	<i>Ulmus 'New Horizon'</i>	New Horizon Elm	2	2"	B&B	
<b>ORNAMENTAL TREES</b>						
MJ	<i>Malus 'Jewelcole'</i>	Red Jewel Crabapple	6	2"	B&B	
<b>EVERGREEN SHRUBS</b>						
Pp	<i>Picea pungens 'Glauca Globosa'</i>	Globe Blue Spruce	1	#5	Cont.	
Rp	<i>Rhododendron 'PJM'</i>	PJM Rhododendron	1	#5	Cont.	
Tm	<i>Taxus x media 'Tauntoni'</i>	Taunton Yew	10	#5	Cont.	
<b>DECIDUOUS SHRUBS</b>						
Cs	<i>Clethra alnifolia 'Sixteen Candles'</i>	Sixteen Candles Summersweet	15	#3	Cont.	
DK	<i>Diervilla 'G2X885411'</i>	Kodiak Red Bush Honeysuckle	24	#3	Cont.	
Hp	<i>Hydrangea paniculata 'SMHPLQF'</i>	Little Quick Fire Hydrangea	21	#3	Cont.	
Pj	<i>Physocarpus opulifolius 'Jefam'</i>	Amber Jubilee Ninebark	7	#5	Cont.	
Po	<i>Physocarpus opulifolius 'SMPOTW'</i>	Tiny Wine Ninebark	16	#5	Cont.	
Ra	<i>Rhus aromatica 'Gro-Low'</i>	Gro-Low Sumac	12	#5	Cont.	
Rr	<i>Rosa rugosa 'Hiensa'</i>	Hiensa Rose	17	#3	Cont.	
Sb	<i>Syringa 'SMSJBP7'</i>	Dark Purple Bloomerang Lilac	2	#3	Cont.	
St	<i>Spiraea betulifolia 'Tor Gold'</i>	Glow Girl Spirea	6	#3	Cont.	
Vd	<i>Viburnum dentatum</i>	Arrowwood Viburnum	10	#5	Cont.	
<b>ORNAMENTAL GRASSES &amp; PERENNIALS</b>						
ca	<i>Calamagrostis x acutiflora 'Karl Foerster'</i>	Karl Foerster Feather Reed Grass	21	#1	Cont.	
em	<i>Echinacea 'Magnus'</i>	Magnus Coneflower	16	#1	Cont.	
he	<i>Hemerocallis 'Going Bananas'</i>	Going Bananas Daylily	55	#1	Cont.	
md	<i>Monarda didyma 'Raspberry Wine'</i>	Raspberry Wine Beebalm	25	#1	Cont.	
pa	<i>Perovskia atriplicifolia</i>	Russian Sage	24	#1	Cont.	
rf	<i>Rudbeckia fulgida 'Goldsturm'</i>	Goldsturm Black Eyed Susan	39	#1	Cont.	
sh	<i>Sporobolus heterolepis 'Tara'</i>	Dwarf Prairie Dropseed	28	#1	Cont.	
sn	<i>Salvia nemorosa 'Caradonna'</i>	Caradonna Salvia	47	#1	Cont.	
ss	<i>Schizachyrium scoparium 'Prairie Blues'</i>	Prairie Blues Little Bluestem	37	#1	Cont.	

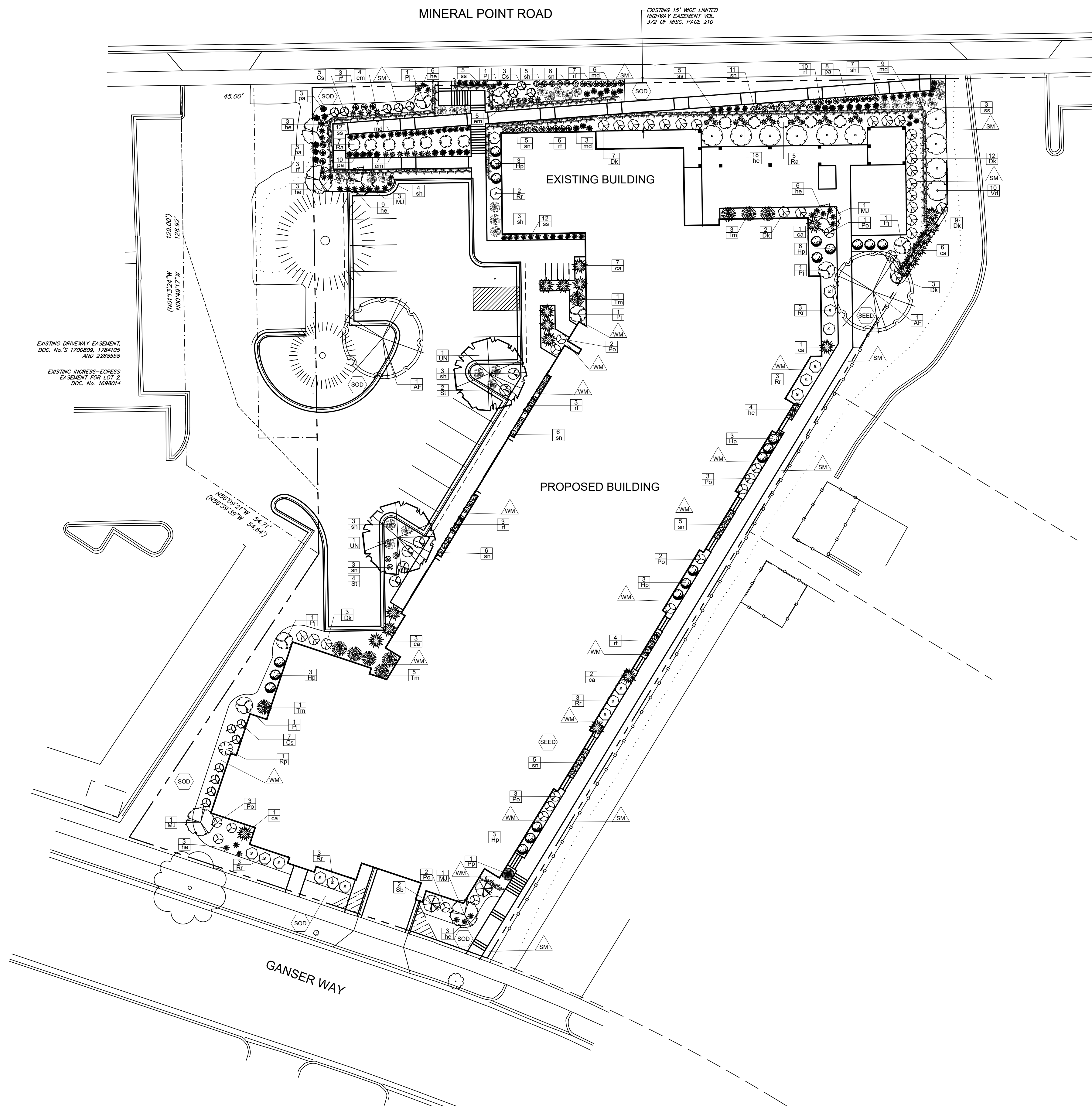
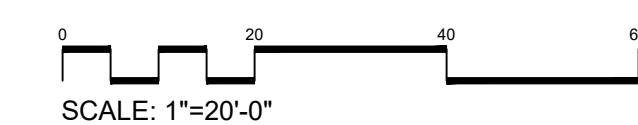
-  Capitol Washed Stone / Vinyl Edging
-  Brown Dyed Wood Mulch / Vinyl Edging
-  Premium Kentucky Bluegrass sod
-  Premium sunny seed blend with straw mat. (Class 1 Type B single net)
-  Limestone Boulder Wall

LANDSCAPE NOTES:

- Please refer to Grading & Erosion Control Plan for final contour information.
- Individual tree and shrub groupings in lawn areas to receive wood mulch rings with shovel cut edge.
- Add street trees per the direction of the City Forester.
- Vinyl edge is Dimex EdgePro polyvinyl edging or equivalent

STREET TREE NOTE:

Contractor shall install tree protection fencing in the area between the curb and sidewalk and extend it at least 5 feet from both sides of the tree along the length of the terrace. No excavation is permitted within 5 feet of the outside edge of a tree trunk. If excavation within 5 feet of any tree is necessary, contractor shall contact City Forestry (266-4816) prior to excavation to assess the impact to the tree and root system. Tree pruning shall be coordinated with City Forestry prior to the start of construction. Tree protection specifications can be found in section 107.13 of *City of Madison Standard Specifications for Public Works Construction* - <http://www.cityofmadison.com/business/pw/documents/StdSpecs/2013/Part1.pdf>. Any tree removals that are required for construction after the development plan is approved will require at least a 72 hour wait period before a tree removal permit can be issued by Forestry, to notify the Alder of the change in the tree plan.



**UNO'S SITE DEVELOPMENT**  
Mineral Point Road  
Madison, Wisconsin

Date: September 15, 2020  
Scale: 1" = 20'-0"  
Designer: kms  
Job #

Seal:  
To protect against legal liability, the plans presented herein are "schematic," and should not be outsourced as "biddable" or "construction documents" unless approved by the Landscape Designer. This is not an original document unless stamped in red, as ORIGINAL.

Revisions:  
2021.07.27

**L1.0**

Reference Name:  
Northpointe Development



PIZZERIA UNOS  
SITE REDEVELOPMENT

7601 Mineral Pt Rd  
Madison, WI 53719





PIZZERIA UNOS  
SITE REDEVELOPMENT

7601 Mineral Pt Rd  
Madison, WI 53719





PIZZERIA UNOS  
SITE REDEVELOPMENT

7601 Mineral Pt Rd  
Madison, WI 53719





Previous Design



Current Design

Pizzeria Uno Site Redevelopment  
7601 Mineral Point Rd, Madison, WI  
September 22, 2021



Previous Design



Current Design

Pizzeria Uno Site Redevelopment  
7601 Mineral Point Rd, Madison, WI  
September 22, 2021

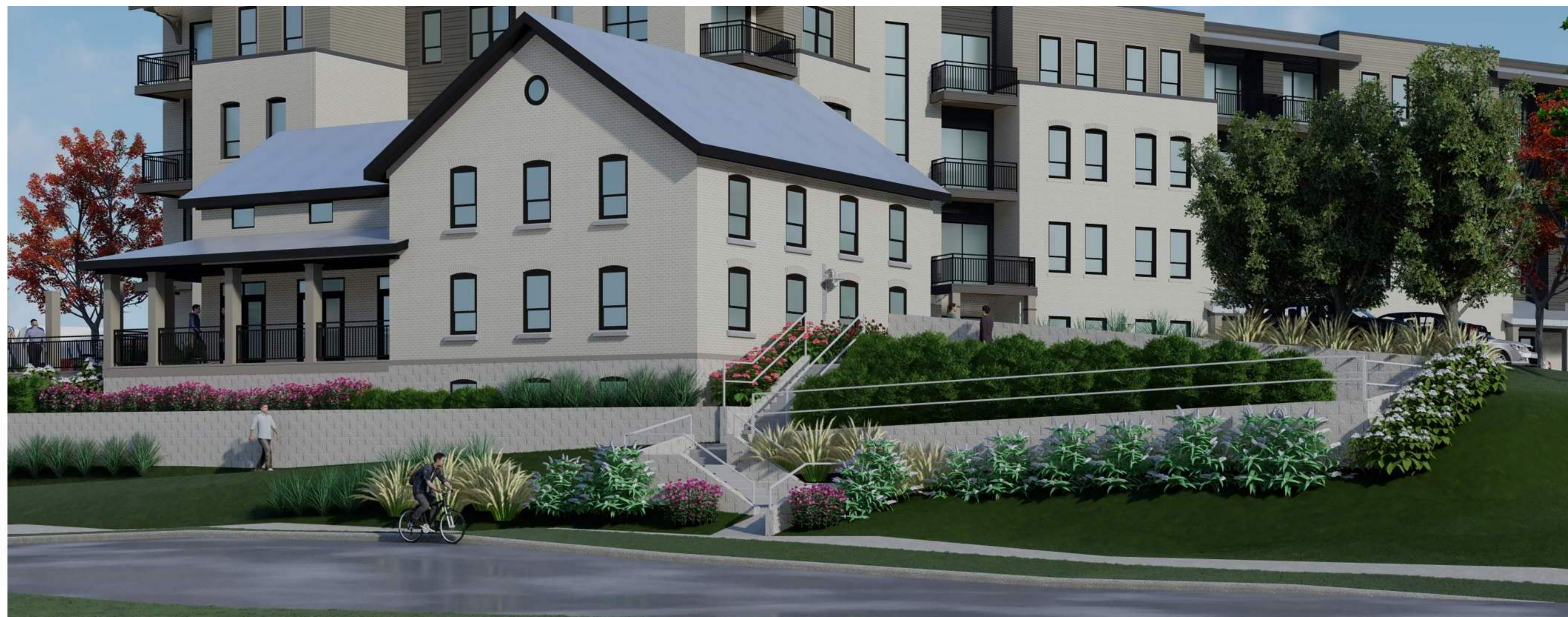






Current Design

Previous Design



Pizzeria Uno Site Redevelopment  
7601 Mineral Point Rd, Madison, WI  
September 22, 2021





Previous Design

Current Design



Pizzeria Uno Site Redevelopment  
7601 Mineral Point Rd, Madison, WI  
September 22, 2021





**STONE BASE | SILLS | BANDS**



**WINDOWS  
ALUMINIUM RAILINGS**



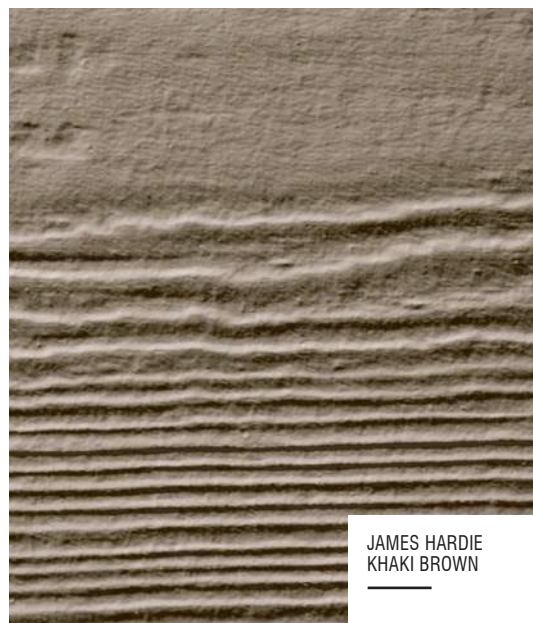
**METAL ROOF**



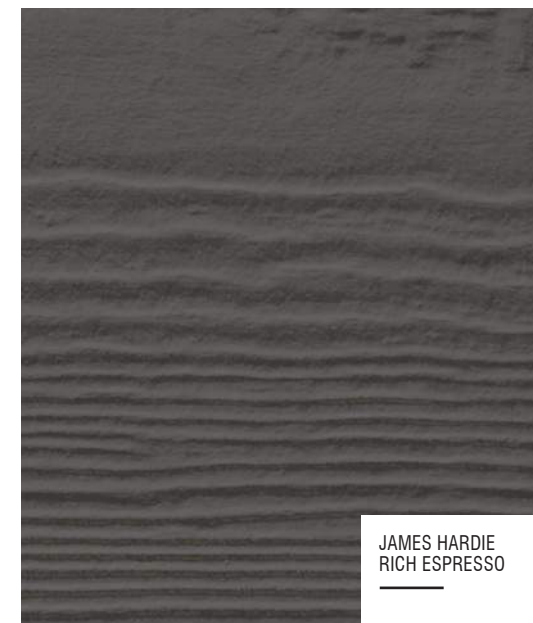
**METAL FLASHINGS**



**BRICK VENEER**



**COMPOSITE SIDING #1**



**COMPOSITE SIDING #2**

**MATERIAL BOARD**  
**NORTHPOINTE UNO'S SITE**  
 7601 MINERAL POINT ROAD  
 MADISON, WI  
 July 28, 2021





PIZZERIA UNOS  
SITE REDEVELOPMENT

7601 Mineral Pt Rd  
Madison, WI 53719





PIZZERIA UNOS  
SITE REDEVELOPMENT

7601 Mineral Pt Rd  
Madison, WI 53719





**PIZZERIA UNOS  
SITE REDEVELOPMENT**

7601 Mineral Pt Rd  
Madison, WI 53719





PIZZERIA UNOS  
SITE REDEVELOPMENT

7601 Mineral Pt Rd  
Madison, WI 53719





PIZZERIA UNOS  
SITE REDEVELOPMENT

7601 Mineral Pt Rd  
Madison, WI 53719







PIZZERIA UNOS  
SITE REDEVELOPMENT

7601 Mineral Pt Rd  
Madison, WI 53719

