

1 OVERALL LOWER LEVEL PLAN
A100 SCALE: 3/32"=1'-0"

CITY OF MADISON DEVELOPMENT REVIEW SUBMITTAL:

Submitted dated: February 17, 2016 for the following Meeting Dates
 Landmarks Commission - March 14, 2016
 Urban Design Commission - April 6, 2016
 Plan Commission - April 18, 2016
 Common Council - May 3, 2016

NOT FOR CONSTRUCTION

722 Williamson Street Apartments

722 Williamson Street
Madison, WI 53703

Project #: 15003.00

Design Development

Issued for:

No.	Description	Date
01	City of Madison Review	02-17-2016

Drawn by: CaS4 Architecture
Checked by: CaS4 Architecture

OVERALL LOWER LEVEL PLAN

CITY OF MADISON DEVELOPMENT REVIEW SUBMITTAL:
Submitted dated: February 17, 2016 for the following Meeting Dates
Landmarks Commission - March 14, 2016
Urban Design Commission - April 6, 2016
Plan Commission - April 18, 2016
Common Council - May 3, 2016

NOT FOR CONSTRUCTION

**722 Williamson Street
Apartments**
722 Williamson Street
Madison, WI 53703
Project #: 15003.00

Design Development

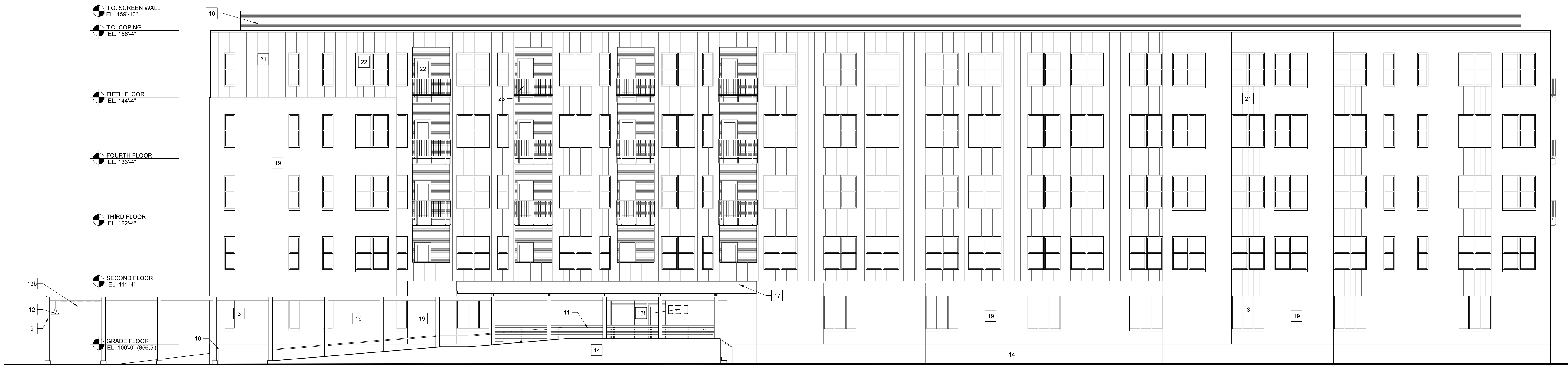
Issued for:

No.	Description	Date
01	City of Madison Review	02-17-2016

Drawn by: CaS4 Architecture
Checked by: CaS4 Architecture

**OVERALL BUILDING
ELEVATIONS**

A200



1 NORTH ELEVATION
SCALE: 1/8"=1'-0"



2 EAST ELEVATION
SCALE: 1/8"=1'-0"

ELEVATION KEYNOTE LEGEND

- 1 EXISTING MASONRY TO BE TUCK POINTED AS REQUIRED
- 2 NEW THERMALLY BROKEN ALUMINUM CLAD WINDOWS, MEDIUM BRONZE FINISH
- 3 NEW THERMALLY BROKEN ALUMINUM STOREFRONT, FINISH VARIES BY LOCATION
- 4 NEW THERMALLY BROKEN ALUMINUM GARAGE DOOR SYSTEMS, FINISH VARIES BY LOCATION
- 5 INSULATED CLEAR GLASS
- 6 INSULATED TEXTURED GLASS
- 7 NEW EIFS SYSTEM, REMOVING ALL EXISTING EIFS AND REPLACING WITH 2" EIFS SYSTEM ON DRAINAGE LAYER
- 8 ALUMINUM SILL FLASHING TO MATCH EIFS
- 9 GALVANIZED STRUCTURAL STEEL
- 10 GALVANIZED STEEL HANDRAILS AND/OR MESH GUARD
- 11 RECLAIMED WOOD SLAT WALL
- 12 LIGHTING
- 13a 1/2" ALUMINUM PLATE SIGNAGE - 18" TALL x 8'-0" WIDE
- 13b 1/2" ALUMINUM PLATE SIGNAGE - 18" TALL x 7'-0" WIDE
- 13c 1/2" ALUMINUM PLATE SIGNAGE POST MOUNTED IN PLANTER - 24" TALL x 5'-0" WIDE
- 13d 1/2" ALUMINUM PLATE SIGNAGE MOUNTED WITHIN THE DEPTH OF THE BRICK RETURN - 18" TALL x 8'-0" WIDE MAXIMUM
- 13e 1/2" ALUMINUM PLATE SIGNAGE POST MOUNTED IN PLANTER - 18" TALL x 4'-0" WIDE
- 13f 1/2" ALUMINUM PLATE SIGNAGE WALL MOUNTED - 18" TALL x 3'-6" WIDE
- 13g INTERIOR VINYL LETTERING ON GLAZING WITHIN 3'-0" x 3'-0" AREA
- 13h POST MOUNTED LIT SIGNAGE - 15" TALL x 12'-0" WIDE MAXIMUM
- 14 SANDBLASTED CAST IN PLACE CONCRETE
- 15 RECLAIMED WOOD BENCH SLABS
- 16 CORRUGATED METAL PANEL, CHARCOAL GRAY FINISH
- 17 STANDING SEAM METAL ROOF, COLOR TO BE CHARCOAL GRAY TO MATCH CORRUGATED METAL PANEL
- 18 GALVANIZED TUBE STEEL AND MESH GUARD FENCE AND EGRESS GATE
- 19 BRICK VENEER, MODULAR SIZE IN RUNNING BOND PATTERN, BUFF COLOR
- 20 BRICK VENEER, MODULAR SIZE IN RUNNING BOND PATTERN, REDDISH BROWN COLOR
- 21 HOOK AND STRAP FLAT SEAM METAL PANEL, 1/3 OFFSET HORIZONTAL JOINTS, SILVER METALLIC COLOR
- 22 FIBERGLASS WINDOW AND DOOR WITH INSULATED CLEAR GLASS
- 23 ALUMINUM RAILING SYSTEM, FINISH TO MATCH HOOK STRAP FLAT SEAM METAL PANEL

CITY OF MADISON DEVELOPMENT REVIEW SUBMITTAL:

Submitted dated: February 17, 2016 for the following Meeting Dates
Landmarks Commission - March 14, 2016
Urban Design Commission - April 6, 2016
Plan Commission - April 18, 2016
Common Council - May 3, 2016

NOT FOR CONSTRUCTION

722 Williamson Street Apartments

722 Williamson Street
Madison, WI 53703

Project #: 15003.00

Design Development

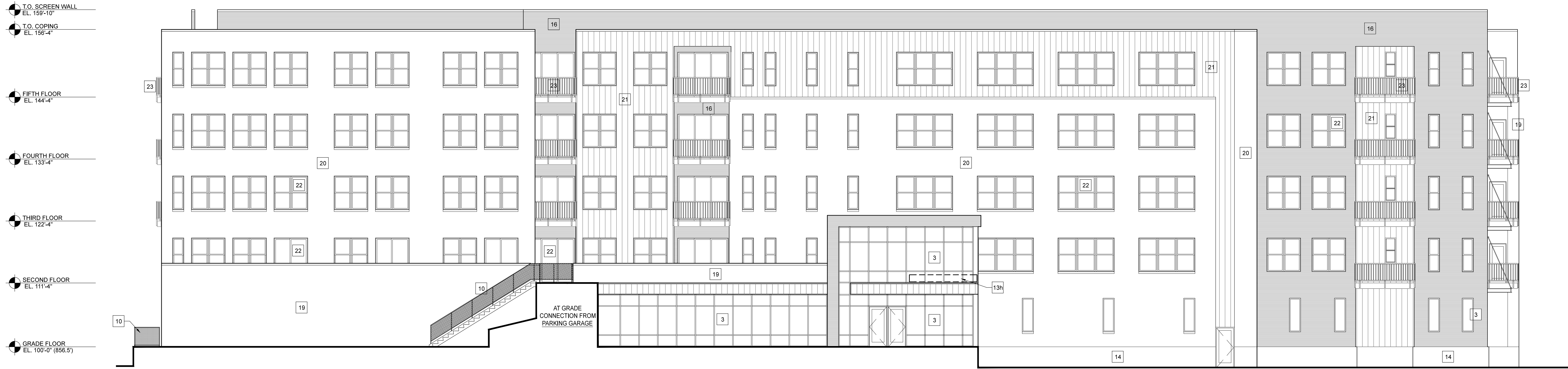
Issued for:

No.	Description	Date
01	City of Madison Review	02-17-2016

Drawn by: Cas4 Architecture
Checked by: Cas4 Architecture

OVERALL BUILDING ELEVATIONS

A201



1 SOUTH ELEVATION
SCALE: 1/8"=1'-0"



2 WEST ELEVATION
SCALE: 1/8"=1'-0"

ELEVATION KEYNOTE LEGEND

- 1 EXISTING MASONRY TO BE TUCK POINTED AS REQUIRED
- 2 NEW THERMALLY BROKEN ALUMINUM CLAD WINDOWS, MEDIUM BRONZE FINISH
- 3 NEW THERMALLY BROKEN ALUMINUM STOREFRONT, FINISH VARIES BY LOCATION
- 4 NEW THERMALLY BROKEN ALUMINUM GARAGE DOOR SYSTEMS, FINISH VARIES BY LOCATION
- 5 INSULATED CLEAR GLASS
- 6 INSULATED TEXTURED GLASS
- 7 NEW EIFS SYSTEM, REMOVING ALL EXISTING EIFS AND REPLACING WITH 2" EIFS SYSTEM ON DRAINAGE LAYER
- 8 ALUMINUM SILL FLASHING TO MATCH EIFS
- 9 GALVANIZED STRUCTURAL STEEL
- 10 GALVANIZED STEEL HANDRAILS AND/OR MESH GUARD
- 11 RECLAIMED WOOD SLAT WALL
- 12 LIGHTING
- 13A 1/2" ALUMINUM PLATE SIGNAGE - 18" TALL x 8'-0" WIDE
- 13B 1/2" ALUMINUM PLATE SIGNAGE - 18" TALL x 7'-0" WIDE
- 13C 1/2" ALUMINUM PLATE SIGNAGE POST MOUNTED IN PLANTER - 24" TALL x 5'-0" WIDE
- 13D 1/2" ALUMINUM PLATE SIGNAGE MOUNTED WITHIN THE DEPTH OF THE BRICK RETURN - 18" TALL x 8'-0" WIDE MAXIMUM
- 13E 1/2" ALUMINUM PLATE SIGNAGE POST MOUNTED IN PLANTER - 18" TALL x 4'-0" WIDE
- 13F 1/2" ALUMINUM PLATE SIGNAGE WALL MOUNTED - 18" TALL x 3'-6" WIDE
- 13G INTERIOR VINYL LETTERING ON GLAZING WITHIN 3'-0" x 3'-0" AREA
- 13H POST MOUNTED LIT SIGNAGE - 15" TALL x 12'-0" WIDE MAXIMUM
- 14 SANDBLASTED CAST IN PLACE CONCRETE
- 15 RECLAIMED WOOD BENCH SLABS
- 16 CORRUGATED METAL PANEL, CHARCOAL GRAY FINISH
- 17 STANDING SEAM METAL ROOF, COLOR TO BE CHARCOAL GRAY TO MATCH CORRUGATED METAL PANEL
- 18 GALVANIZED TUBE STEEL AND MESH GUARD FENCE AND EGRESS GATE
- 19 BRICK VENEER, MODULAR SIZE IN RUNNING BOND PATTERN, BUFF COLOR
- 20 BRICK VENEER, MODULAR SIZE IN RUNNING BOND PATTERN, REDDISH BROWN COLOR
- 21 HOOK AND STRAP FLAT SEAM METAL PANEL, 1/3 OFFSET HORIZONTAL JOINTS, SILVER METALLIC COLOR
- 22 FIBERGLASS WINDOW AND DOOR WITH INSULATED CLEAR GLASS
- 23 ALUMINUM RAILING SYSTEM, FINISH TO MATCH HOOK STRAP FLAT SEAM METAL PANEL

CITY OF MADISON DEVELOPMENT REVIEW SUBMITTAL:
 Submit dated: February 17, 2016 for the following Meeting Dates
 Landmarks Commission - March 14, 2016
 Urban Design Commission - April 6, 2016
 Plan Commission - April 18, 2016
 Common Council - May 3, 2016

NOT FOR CONSTRUCTION

**722 Williamson Street
Apartments**
 722 Williamson Street
 Madison, WI 53703
 Project # : 15003.00

Design Development

Issued for:

No.	Description	Date
01	City of Madison Review	02-17-2016

Drawn by: CaS4 Architecture
 Checked by: CaS4 Architecture

**RENDERED BUILDING
ELEVATIONS**

A202



1
A202
RENDERED NORTH ELEVATION
SCALE: 1/8"=1'-0"



2
A202
RENDERED EAST ELEVATION
SCALE: 1/8"=1'-0"

ELEVATION KEYNOTE LEGEND

- | | | |
|---|--|--|
| 1 EXISTING MASONRY TO BE TUCK POINTED AS REQUIRED | 13a 1/2" ALUMINUM PLATE SIGNAGE - 18" TALL x 8'-0" WIDE | 17 STANDING SEAM METAL ROOF. COLOR TO BE CHARCOAL GRAY TO MATCH CORRUGATED METAL PANEL |
| 2 NEW THERMALLY BROKEN ALUMINUM CLAD WINDOWS; MEDIUM BRONZE FINISH | 13b 1/2" ALUMINUM PLATE SIGNAGE - 18" TALL x 7'-0" WIDE | 18 GALVANIZED TUBE STEEL AND MESH GUARD FENCE AND EGRESS GATE |
| 3 NEW THERMALLY BROKEN ALUMINUM STOREFRONT; FINISH VARIES BY LOCATION | 13c 1/2" ALUMINUM PLATE SIGNAGE POST MOUNTED IN PLANTER - 24" TALL x 5'-0" WIDE | 19 BRICK VENEER. MODULAR SIZE IN RUNNING BOND PATTERN, BUFF COLOR |
| 4 NEW THERMALLY BROKEN ALUMINUM GARAGE DOOR SYSTEMS; FINISH VARIES BY LOCATION | 13d 1/2" ALUMINUM PLATE SIGNAGE MOUNTED WITHIN THE DEPTH OF THE BRICK RETURN - 18" TALL x 8'-0" WIDE MAXIMUM | 20 BRICK VENEER. MODULAR SIZE IN RUNNING BOND PATTERN, REDDISH BROWN COLOR |
| 5 INSULATED CLEAR GLASS | 13e 1/2" ALUMINUM PLATE SIGNAGE POST MOUNTED IN PLANTER - 18" TALL x 4'-0" WIDE | 21 HOOK AND STRAP FLAT SEAM METAL PANEL; 1/3 OFFSET HORIZONTAL JOINTS, SILVER METALLIC COLOR |
| 6 INSULATED TEXTURED GLASS | 13f 1/2" ALUMINUM PLATE SIGNAGE WALL MOUNTED - 18" TALL x 3'-0" WIDE | 22 FIBERGLASS WINDOW AND DOOR WITH INSULATED CLEAR GLASS |
| 7 NEW EIFS SYSTEM; REMOVING ALL EXISTING EIFS AND REPLACING WITH 2" EIFS SYSTEM ON DRAINAGE LAYER | 13g INTERIOR VINYL LETTERING ON GLAZING WITHIN 3'-0" x 3'-0" AREA | 23 ALUMINUM RAILING SYSTEM; FINISH TO MATCH HOOK STRAP FLAT SEAM METAL PANEL |
| 8 ALUMINUM SILL FLASHING TO MATCH EIFS | 13h POST MOUNTED LIT SIGNAGE - 15" TALL x 12'-0" WIDE MAXIMUM | |
| 9 GALVANIZED STRUCTURAL STEEL | 14 SANDBLASTED CAST IN PLACE CONCRETE | |
| 10 GALVANIZED STEEL HANDRAILS AND/OR MESH GUARD | 15 RECLAIMED WOOD BENCH SLABS | |
| 11 RECLAIMED WOOD SLAT WALL | 16 CORRUGATED METAL PANEL; CHARCOAL GRAY FINISH | |
| 12 LIGHTING | | |

Project Name: 722 Williamson Street Apartments
 Project #: 15003.00

CITY OF MADISON DEVELOPMENT REVIEW SUBMITTAL:
Submital dated: February 17, 2016 for the following Meeting Dates
Landmarks Commission - March 14, 2016
Urban Design Commission - April 6, 2016
Plan Commission - April 18, 2016
Common Council - May 3, 2016

NOT FOR CONSTRUCTION

**722 Williamson Street
Apartments**
722 Williamson Street
Madison, WI 53703
Project #: 15003.00

Design Development

Issued for:

No.	Description	Date
01	City of Madison Review	02-17-2016

Drawn by: CaS4 Architecture
Checked by: CaS4 Architecture

**RENDERED BUILDING
ELEVATIONS**

A203



1 RENDERED SOUTH ELEVATION
SCALE: 1/8"=1'-0"



2 RENDERED WEST ELEVATION
SCALE: 1/8"=1'-0"

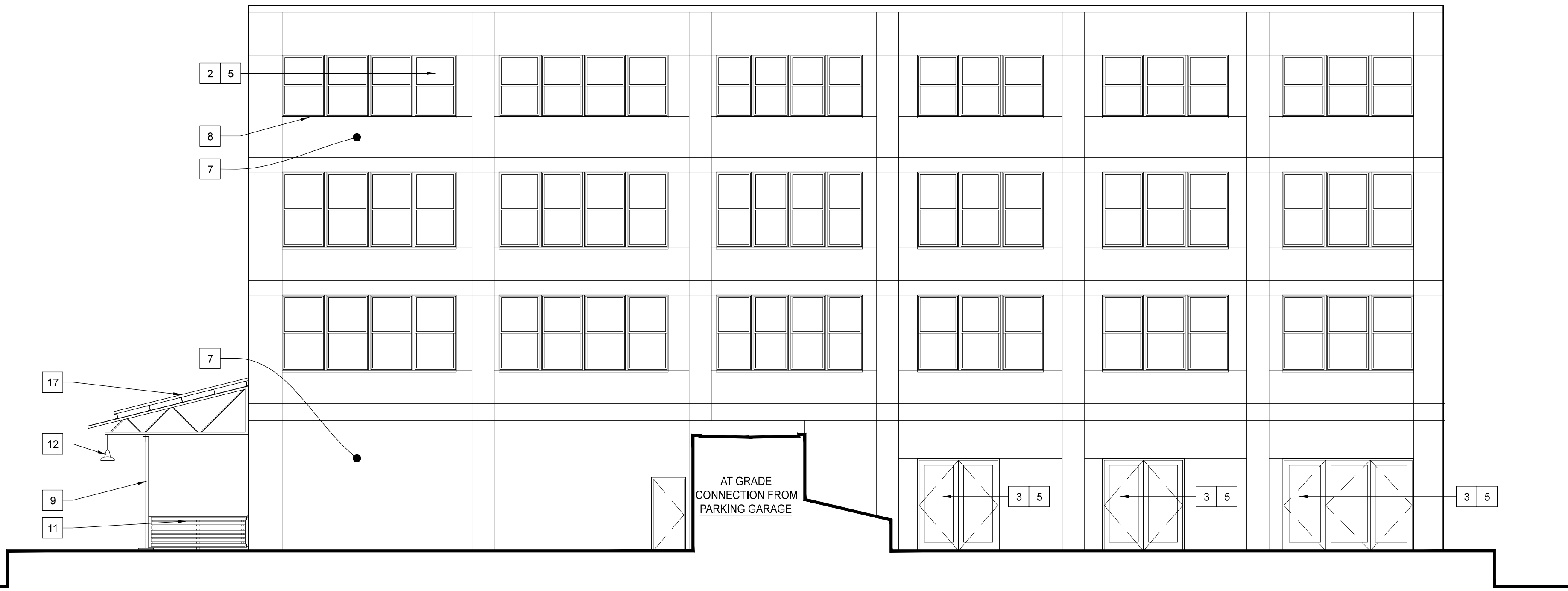
ELEVATION KEYNOTE LEGEND

- 1 EXISTING MASONRY TO BE TUCK POINTED AS REQUIRED
- 2 NEW THERMALLY BROKEN ALUMINUM CLAD WINDOWS; MEDIUM BRONZE FINISH
- 3 NEW THERMALLY BROKEN ALUMINUM STOREFRONT; FINISH VARIES BY LOCATION
- 4 NEW THERMALLY BROKEN ALUMINUM GARAGE DOOR SYSTEMS; FINISH VARIES BY LOCATION
- 5 INSULATED CLEAR GLASS
- 6 INSULATED TEXTURED GLASS
- 7 NEW EIFS SYSTEM; REMOVING ALL EXISTING EIFS AND REPLACING WITH 2" EIFS SYSTEM ON DRAINAGE LAYER
- 8 ALUMINUM SILL FLASHING TO MATCH EIFS
- 9 GALVANIZED STRUCTURAL STEEL
- 10 GALVANIZED STEEL HANDRAILS AND/OR MESH GUARD
- 11 RECLAIMED WOOD SLAT WALL
- 12 LIGHTING
- 13a 1/2" ALUMINUM PLATE SIGNAGE - 18" TALL x 8'-0" WIDE
- 13b 1/2" ALUMINUM PLATE SIGNAGE - 18" TALL x 7'-0" WIDE
- 13c 1/2" ALUMINUM PLATE SIGNAGE POST MOUNTED IN PLANTER - 24" TALL x 5'-0" WIDE
- 13d 1/2" ALUMINUM PLATE SIGNAGE MOUNTED WITHIN THE DEPTH OF THE BRICK RETURN - 18" TALL x 8'-0" WIDE MAXIMUM
- 13e 1/2" ALUMINUM PLATE SIGNAGE POST MOUNTED IN PLANTER - 18" TALL x 4'-0" WIDE
- 13f 1/2" ALUMINUM PLATE SIGNAGE WALL MOUNTED - 18" TALL x 3'-6" WIDE
- 13g INTERIOR VINYL LETTERING ON GLAZING WITHIN 3'-0" x 3'-0" AREA
- 13h POST MOUNTED LIT SIGNAGE - 15" TALL x 12'-0" WIDE MAXIMUM
- 14 SANDBLASTED CAST IN PLACE CONCRETE
- 15 RECLAIMED WOOD BENCH SLABS
- 16 CORRUGATED METAL PANEL; CHARCOAL GRAY FINISH
- 17 STANDING SEAM METAL ROOF; COLOR TO BE CHARCOAL GRAY TO MATCH CORRUGATED METAL PANEL
- 18 GALVANIZED TUBE STEEL AND MESH GUARD FENCE AND EGRESS GATE
- 19 BRICK VENEER; MODULAR SIZE IN RUNNING BOND PATTERN, BUFF COLOR
- 20 BRICK VENEER; MODULAR SIZE IN RUNNING BOND PATTERN, REDDISH BROWN COLOR
- 21 HOOK AND STRAP FLAT SEAM METAL PANEL; 1/3 OFFSET HORIZONTAL JOINTS, SILVER METALLIC COLOR
- 22 FIBERGLASS WINDOW AND DOOR WITH INSULATED CLEAR GLASS
- 23 ALUMINUM RAILING SYSTEM; FINISH TO MATCH HOOK STRAP FLAT SEAM METAL PANEL

- T.O. CONC. ROOF
EL. 151'-0"
 - FOURTH FLOOR
EL. 138'-4"
 - THIRD FLOOR
EL. 126'-4"
 - SECOND FLOOR
EL. 114'-4"
 - GRADE FLOOR
EL. 100'-0" (856.5)
 - BASEMENT FLOOR
EL. 90'-7"
- 1 NORTH ELEVATION**
SCALE: 1/8"=1'-0"

GENERAL NOTE:
TUCK POINTING TO OCCUR ON MASONRY ON WHERE DETERMINED THROUGH FURTHER INVESTIGATION. MASONRY COMPATIBILITY AND COLOR MATCH WILL BE FOLLOWED
**ALL DETAILING WITHIN FACADE MASONRY TO REMAIN

- T.O. CONC. ROOF
EL. 151'-0"
 - FOURTH FLOOR
EL. 138'-4"
 - THIRD FLOOR
EL. 126'-4"
 - SECOND FLOOR
EL. 114'-4"
 - GRADE FLOOR
EL. 100'-0" (856.5)
 - BASEMENT FLOOR
EL. 90'-7"
- 2 EAST ELEVATION**
SCALE: 1/8"=1'-0"



- ELEVATION KEYNOTE LEGEND**
- 1 EXISTING MASONRY TO BE TUCK POINTED AS REQUIRED
 - 2 NEW THERMALLY BROKEN ALUMINUM CLAD WINDOWS; MEDIUM BRONZE FINISH
 - 3 NEW THERMALLY BROKEN ALUMINUM STOREFRONT; FINISH VARIES BY LOCATION
 - 4 NEW THERMALLY BROKEN ALUMINUM GARAGE DOOR SYSTEMS; FINISH VARIES BY LOCATION
 - 5 INSULATED CLEAR GLASS
 - 6 INSULATED TEXTURED GLASS
 - 7 NEW EIFS SYSTEM, REMOVING ALL EXISTING EIFS AND REPLACING WITH 2" EIFS SYSTEM ON DRAINAGE LAYER
 - 8 ALUMINUM SILL FLASHING TO MATCH EIFS
 - 9 GALVANIZED STRUCTURAL STEEL
 - 10 GALVANIZED STEEL HANDRAILS AND/OR MESH GUARD
 - 11 RECLAIMED WOOD SLAT WALL
 - 12 LIGHTING
 - 13a 1/2" ALUMINUM PLATE SIGNAGE - 18" TALL x 6'-0" WIDE
 - 13b 1/2" ALUMINUM PLATE SIGNAGE - 18" TALL x 7'-0" WIDE
 - 13c 1/2" ALUMINUM PLATE SIGNAGE POST MOUNTED IN PLANTER - 24" TALL x 5'-0" WIDE
 - 13d 1/2" ALUMINUM PLATE SIGNAGE MOUNTED WITHIN THE DEPTH OF THE BRICK RETURN - 18" TALL x 8'-0" WIDE MAXIMUM
 - 13e 1/2" ALUMINUM PLATE SIGNAGE POST MOUNTED IN PLANTER - 18" TALL x 4'-0" WIDE
 - 13f 1/2" ALUMINUM PLATE SIGNAGE WALL MOUNTED - 18" TALL x 3'-6" WIDE
 - 13g INTERIOR VINYL LETTERING ON GLAZING WITHIN 3'-0" x 3'-0" AREA
 - 13h POST MOUNTED LIT SIGNAGE - 15" TALL x 12'-0" WIDE MAXIMUM
 - 14 SANDBLASTED CAST IN PLACE CONCRETE
 - 15 RECLAIMED WOOD BENCH SLABS
 - 16 CORRUGATED METAL PANEL, CHARCOAL GRAY FINISH
 - 17 STANDING SEAM METAL ROOF, COLOR TO BE CHARCOAL GRAY TO MATCH CORRUGATED METAL PANEL
 - 18 GALVANIZED TUBE STEEL AND MESH GUARD FENCE AND EGRESS GATE
 - 19 BRICK VENEER, MODULAR SIZE IN RUNNING BOND PATTERN, BUFF COLOR
 - 20 BRICK VENEER, MODULAR SIZE IN RUNNING BOND PATTERN, REDDISH BROWN COLOR
 - 21 HOOK AND STRAP FLAT SEAM METAL PANEL; 1/3 OFFSET HORIZONTAL JOINTS, SILVER METALLIC COLOR
 - 22 FIBERGLASS WINDOW AND DOOR WITH INSULATED CLEAR GLASS
 - 23 ALUMINUM RAILING SYSTEM; FINISH TO MATCH HOOK STRAP FLAT SEAM METAL PANEL

CaS₄
architecture, llc
303 South Paterson Street, Suite One
Madison, WI 53703
ph 608-709-1250

722 Williamson Street Apartments
722 Williamson Street
Madison, WI 53703
Project #: 15003.00

NOT FOR CONSTRUCTION

CITY OF MADISON DEVELOPMENT REVIEW SUBMITTAL:
Submitted dated: February 17, 2016 for the following Meeting Dates:
Landmarks Commission - March 14, 2016
Urban Design Commission - April 6, 2016
Plan Commission - April 18, 2016
Common Council - May 3, 2016

Design Development

Issued for:

No.	Description	Date
01	City of Madison Review	02-17-2016

Drawn by: CaS4 Architecture
Checked by: CaS4 Architecture

OVERALL BUILDING ELEVATIONS

A210

Volume 01 Project Elevation 000.00 - 722 Williamson Street Elevations, CDUS.dwg
Project Name: 722 Williamson Street Apartments
Project #: 15003.00

CITY OF MADISON DEVELOPMENT REVIEW SUBMITTAL:
Submitted dated: February 17, 2016 for the following Meeting Dates
Landmarks Commission - March 14, 2016
Urban Design Commission - April 6, 2016
Plan Commission - April 18, 2016
Common Council - May 3, 2016

NOT FOR CONSTRUCTION

**722 Williamson Street
Apartments**
722 Williamson Street
Madison, WI 53703
Project # 15003.00

Design Development

Issued for:

No.	Description	Date
01	City of Madison Review	02-17-2016

Drawn by: CaS4 Architecture
Checked by: CaS4 Architecture

**OVERALL BUILDING
ELEVATIONS**

A211

GENERAL NOTE:
TUCK POINTING TO OCCUR ON MASONRY ON WHERE DETERMINED THROUGH FURTHER INVESTIGATION. MASONRY COMPATIBILITY AND COLOR MATCH WILL BE FOLLOWED
**ALL DETAILING WITHIN FACADE MASONRY TO REMAIN

T.O. CONC. ROOF
EL. 151'-0"
FOURTH FLOOR
EL. 138'-4"
THIRD FLOOR
EL. 126'-4"
SECOND FLOOR
EL. 114'-4"
GRADE FLOOR
EL. 100'-0" (856.5)
BASEMENT FLOOR
EL. 90'-7"

1 SOUTH ELEVATION
A211 SCALE: 1/8"=1'-0"

GENERAL NOTE:
TUCK POINTING TO OCCUR ON MASONRY ON WHERE DETERMINED THROUGH FURTHER INVESTIGATION. MASONRY COMPATIBILITY AND COLOR MATCH WILL BE FOLLOWED
**ALL DETAILING WITHIN FACADE MASONRY TO REMAIN

T.O. CONC. ROOF
EL. 151'-0"
FOURTH FLOOR
EL. 138'-4"
THIRD FLOOR
EL. 126'-4"
SECOND FLOOR
EL. 114'-4"
GRADE LEVEL
PARKING GARAGE
GRADE FLOOR
EL. 100'-0" (856.5)
BASEMENT FLOOR
EL. 90'-7"

2 WEST ELEVATION
A211 SCALE: 1/8"=1'-0"

ELEVATION KEYNOTE LEGEND

- 1 EXISTING MASONRY TO BE TUCK POINTED AS REQUIRED
- 2 NEW THERMALLY BROKEN ALUMINUM CLAD WINDOWS; MEDIUM BRONZE FINISH
- 3 NEW THERMALLY BROKEN ALUMINUM STOREFRONT; FINISH VARIES BY LOCATION
- 4 NEW THERMALLY BROKEN ALUMINUM GARAGE DOOR SYSTEMS; FINISH VARIES BY LOCATION
- 5 INSULATED CLEAR GLASS
- 6 INSULATED TEXTURED GLASS
- 7 NEW EIFS SYSTEM. REMOVING ALL EXISTING EIFS AND REPLACING WITH 2" EIFS SYSTEM ON DRAINAGE LAYER
- 8 ALUMINUM SILL FLASHING TO MATCH EIFS
- 9 GALVANIZED STRUCTURAL STEEL
- 10 GALVANIZED STEEL HANDRAILS AND/OR MESH GUARD
- 11 RECLAIMED WOOD SLAT WALL
- 12 LIGHTING
- 13a 1/2" ALUMINUM PLATE SIGNAGE - 18" TALL x 6'-0" WIDE
- 13b 1/2" ALUMINUM PLATE SIGNAGE - 18" TALL x 7'-0" WIDE
- 13c 1/2" ALUMINUM PLATE SIGNAGE POST MOUNTED IN PLANTER - 24" TALL x 5'-0" WIDE
- 13d 1/2" ALUMINUM PLATE SIGNAGE MOUNTED WITHIN THE DEPTH OF THE BRICK RETURN - 18" TALL x 8'-0" WIDE MAXIMUM
- 13e 1/2" ALUMINUM PLATE SIGNAGE POST MOUNTED IN PLANTER - 18" TALL x 4'-0" WIDE
- 13f 1/2" ALUMINUM PLATE SIGNAGE WALL MOUNTED - 18" TALL x 3'-6" WIDE
- 13g INTERIOR VINYL LETTERING ON GLAZING WITHIN 3'-0" x 3'-0" AREA
- 13h POST MOUNTED LIT SIGNAGE - 15" TALL x 12'-0" WIDE MAXIMUM
- 14 SANDBLASTED CAST IN PLACE CONCRETE
- 15 RECLAIMED WOOD BENCH SLABS
- 16 CORRUGATED METAL PANEL; CHARCOAL GRAY FINISH
- 17 STANDING SEAM METAL ROOF; COLOR TO BE CHARCOAL GRAY TO MATCH CORRUGATED METAL PANEL
- 18 GALVANIZED TUBE STEEL AND MESH GUARD FENCE AND EGRESS GATE
- 19 BRICK VENEER; MODULAR SIZE IN RUNNING BOND PATTERN; BUFF COLOR
- 20 BRICK VENEER; MODULAR SIZE IN RUNNING BOND PATTERN; REDDISH BROWN COLOR
- 21 HOOK AND STRAP FLAT SEAM METAL PANEL; 1/3 OFFSET HORIZONTAL JOINTS; SILVER METALLIC COLOR
- 22 FIBERGLASS WINDOW AND DOOR WITH INSULATED CLEAR GLASS
- 23 ALUMINUM RAILING SYSTEM; FINISH TO MATCH HOOK STRAP FLAT SEAM METAL PANEL