



Barriques is a locally owned cafe/ wine shop business in Madison and surrounding communities. We are a neighborhood based establishment that provides a comfortable space for people to come together to converse, to launch ideas for a new company, to find an old friend or meet a new one, an escape for new mothers, a meeting point for a bicycle ride, a pick me up on the commute, to prepare for an exam, to get online, to wind down after a morning work out, an afternoon break, or just a nice walk to read the morning newspaper. Conceptually the community meeting space that Barriques provides is not unlike the diner cafe from my hometown of Mt. Horeb where I remember my father would go to every morning before work to meet with others to discuss anything from world policy to the changing of the weather. Barriques has a large selection of organic, Fair Trade coffees, specialty teas, breakfast sandwiches, a lunch/ dinner selection of wraps and sandwiches, cheese plates, tapas, wines by the glass and specialty beers on tap. We feature weekly wine tastings in our stores to help people learn about wine and develop their own palate.

Project at 961 & 967 S. Park Street: Our intention is to develop the building at 961 S. Park with accessible parking for bicycles and vehicles to easily access our space on the 967 S. Park parcel. The existing building is approx. 2,700sq ft with a Quonset design roof line and a cinder block exterior. We are planning to add architectural features to exterior like awnings, adding an additional 12' window, new ADA accessible aluminum & glass front door, tree & bush plantings along the Park St corridor, bicycle racks, new paint and signage. Accessible parking would be a one way starting from Parr Street on the north side of the building, wrapping around and exiting on to Park St. We felt that by designing the one way returning to Park St. we would mitigate parking and impact on the Monona Bay neighborhood. The 967 S. Park parcel would contain an outdoor seating area with tables and umbrellas, a red maple in the middle and two Heritage River Birch trees on the Park St. side to add shade and visual accents/ barriers to the commuting traffic. Along the seating area there would be angled parking stalls and an ADA parking stall for vehicle parking.

The interior space of the new Barriques, because of the Quonset ceiling with steel trusses and high ceiling heights, lends itself to a more industrial feel. We felt by utilizing recycled materials, barn door applications, stained concrete, refurbished woods and leaving the ceiling exposed would solidify a more urban atmosphere. Interior seating would be provided for approx. 64 guests along the front side of the building with an open room that could be closed off with rolling barn doors for private neighborhood meetings, etc. The café counter would run parallel to the south wall from the front towards the back of the building with a contiguous kitchen space for sandwich, bakery and smoothie preparations. Color tones would be earthy, natural and raw to match a more organic, warm atmosphere.

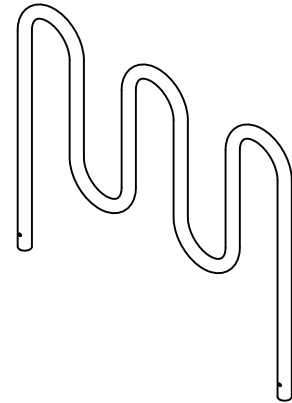
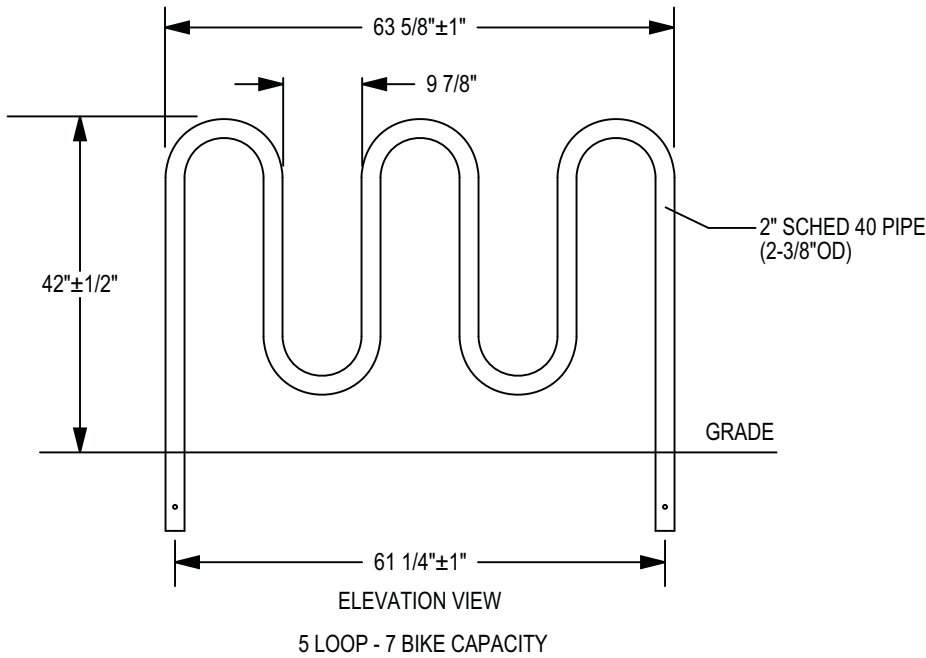
We appreciate your time in looking over our project and encourage any input from you, may it be criticism or praise, because we are always looking for ways to improve Barriques.

Sincerely,

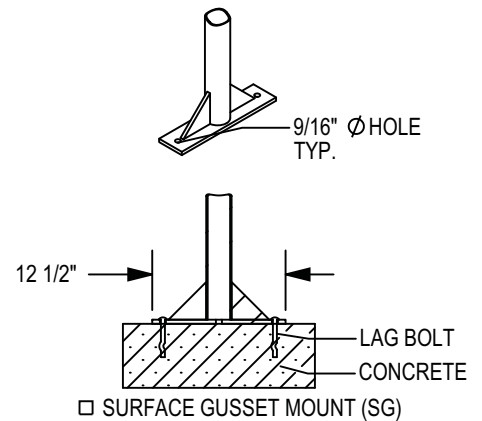
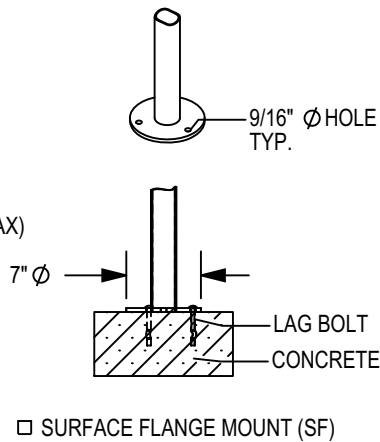
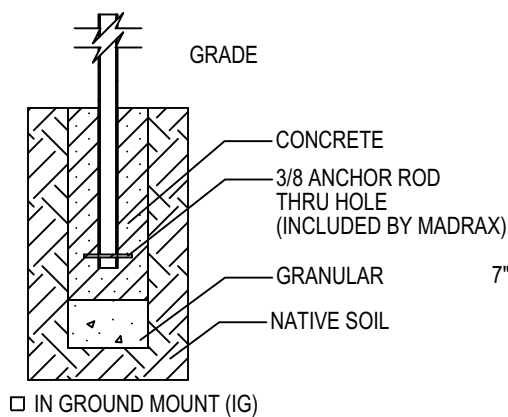
Finn V. Berge

finn@barriquesmarket.com

608-284-9463



CHECK DESIRED MOUNT □



SECTION VIEWS

PRODUCT: HW238-7-IG(SF,SG)
 DESCRIPTION: HEAVY DUTY WINDER BIKE RACK
 7 BIKE, SURFACE OR IN GROUND MOUNT
 DATE: 8-5-02
 ENG: TLG

CONFIDENTIAL DRAWING AND INFORMATION IS NOT TO BE COPIED OR DISCLOSED TO OTHERS WITHOUT THE CONSENT OF TRILARY, INC. SPECIFICATIONS ARE SUBJECT TO CHANGE WITHOUT NOTICE.

©2007 TRILARY, INC. ALL PROPRIETARY RIGHTS RESERVED.

NOTES:

1. INSTALL BIKE RACKS ACCORDING TO MANUFACTURER'S SPECIFICATIONS.
2. CONSULTANT TO SELECT COLOR(FINISH), SEE MANUFACTURER'S SPECIFICATIONS.
3. SEE SITE PLAN FOR LOCATION OR CONSULT OWNER.

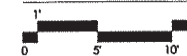


Barnett Architecture

118 NORTH BREESE TERRACE
SUITE I
MADISON, WISCONSIN 53726
608.233.4538
barnettarchitecture.com

NEW LOCATION FOR:
BARRIQUES

961 SOUTH PARK ST.
967. SOUTH PARK ST.
MADISON, WI 53715



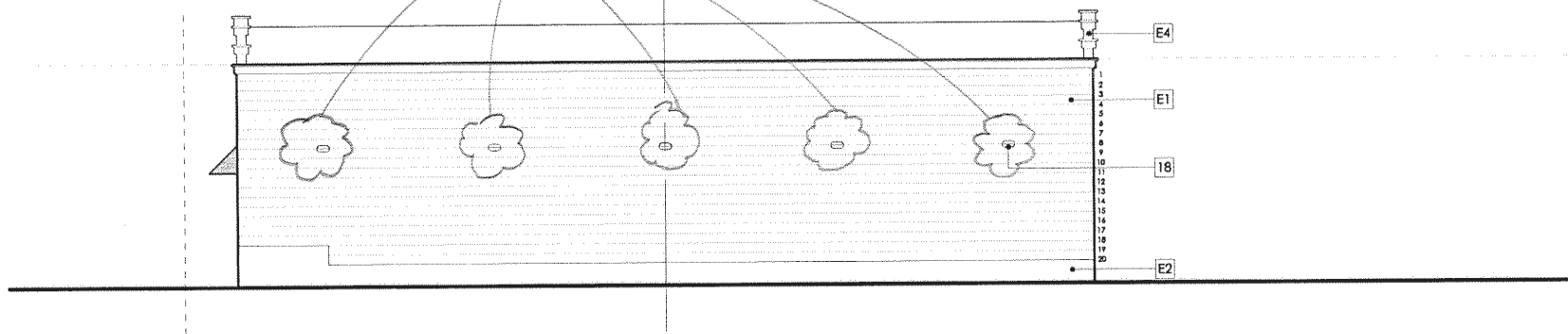
PRELIMINARY
NOT FOR CONSTRUCTION

FIRST ISSUE DATES
2-23-2011

4.2

This document contains confidential or proprietary information. Neither this document nor the information contained herein is to be used or disclosed other than in whole or in part, except as authorized.

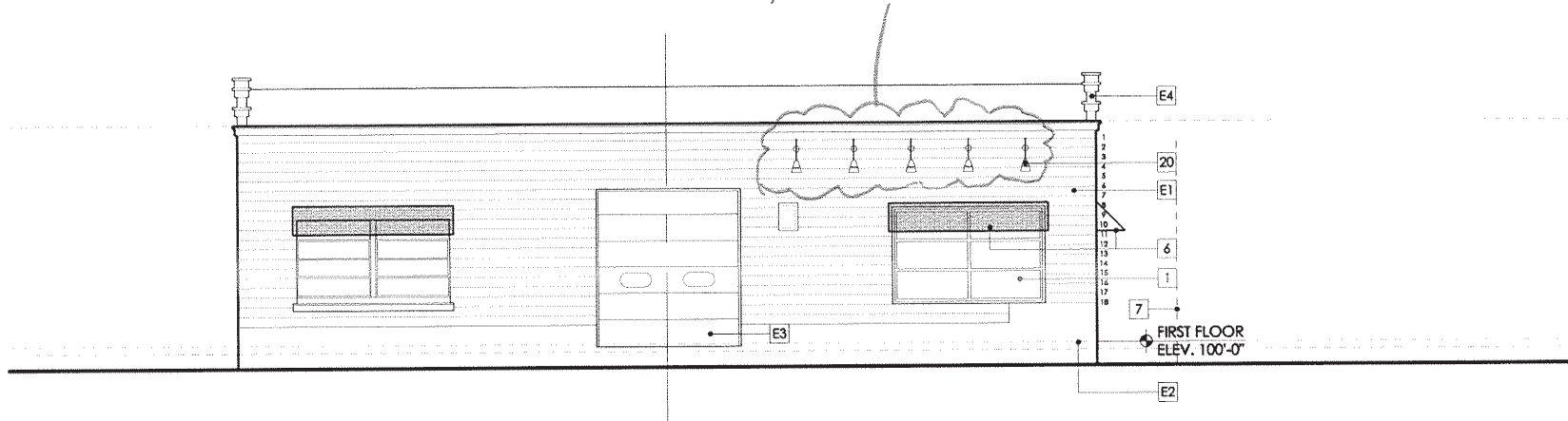
Fixt type "B" 8' above grade



1 SOUTH ELEVATION

SCALE: 1/8" = 1'-0"

Fixt Type "A" 10' above grade



2 NORTH ELEVATION

SCALE: 1/8" = 1'-0"

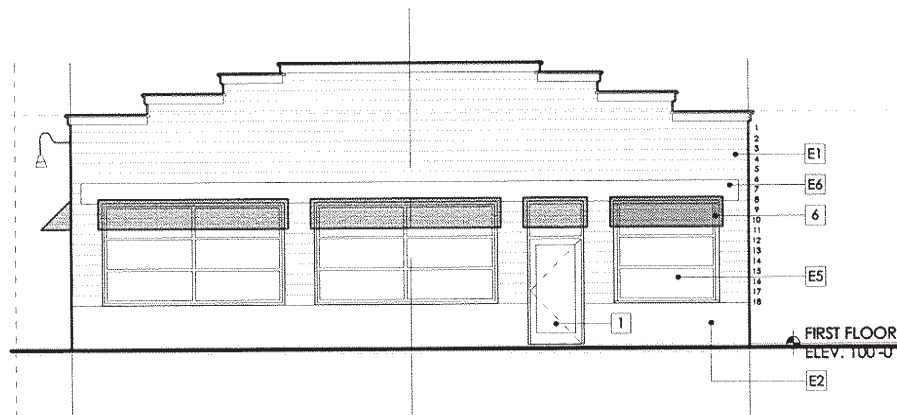


Barnett Architecture

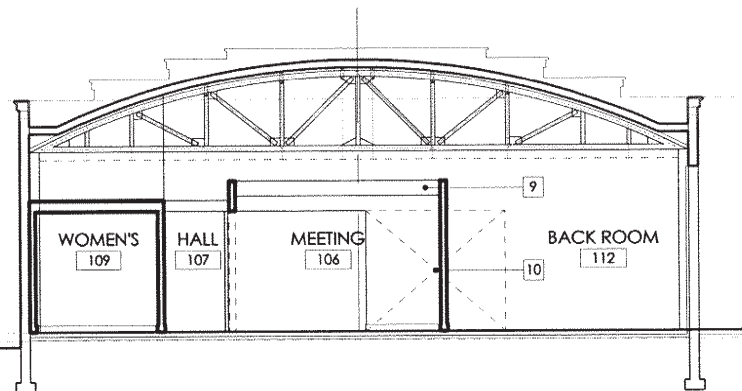
118 NORTH BREEZE TERRACE
SUITE I
MADISON, WISCONSIN 53726
608.233.4538
barnettarchitecture.com

NEW LOCATION FOR:
BARRIQUES

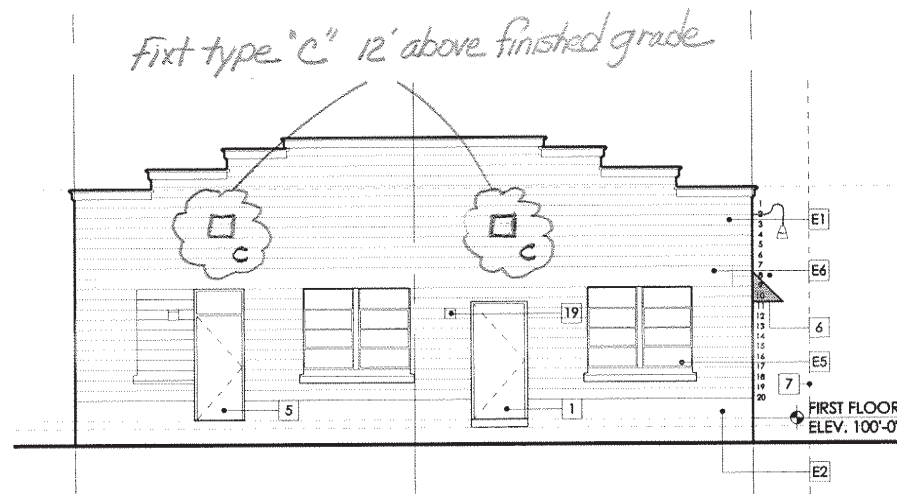
961 SOUTH PARK ST.
967. SOUTH PARK ST.
MADISON, WI 53715



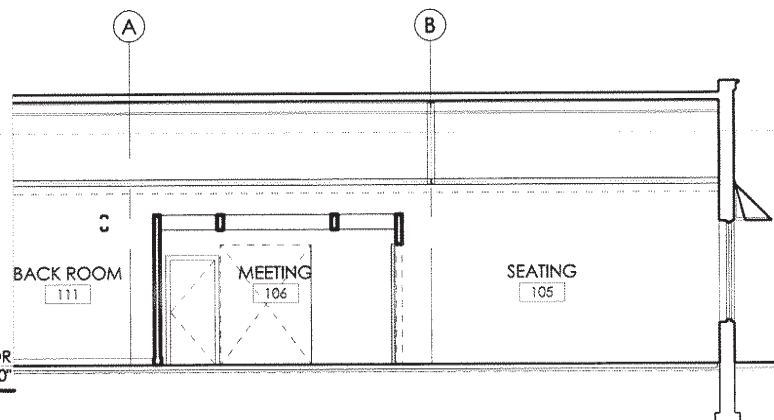
1 WEST ELEVATION
SCALE: 1/8"=1'-0"



3 SECTION LOOKING WEST
SCALE: 1/8"=1'-0"



2 EAST ELEVATION
SCALE: 1/8"=1'-0"



4 SECTION LOOKING SOUTH
SCALE: 1/8"=1'-0"



PRELIMINARY
NOT FOR CONSTRUCTION

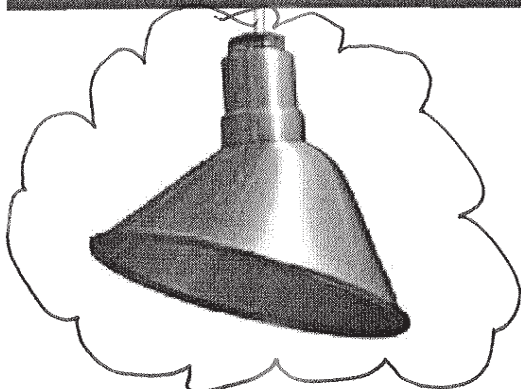
DRAWING ISSUE DATES
2-23-2011

4.1

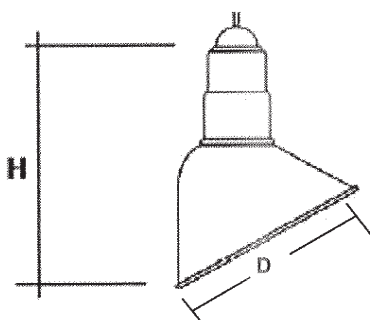
This document contains confidential or proprietary information. Neither this document nor the information contained herein is to be used or disclosed either in whole or in part, except as authorized.

Fixture type "A"

AA-ANGLE REFLECTOR



ANGLE REFLECTOR AA-11-SN shown:
Satin Nickel finish 11" diameter
Available in standard colors plus satin nickel and solid copper.

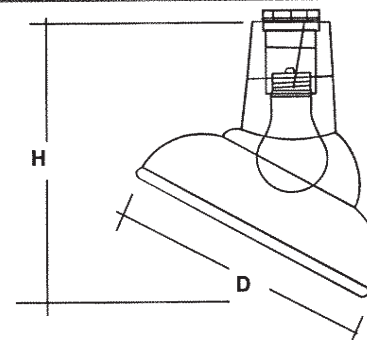
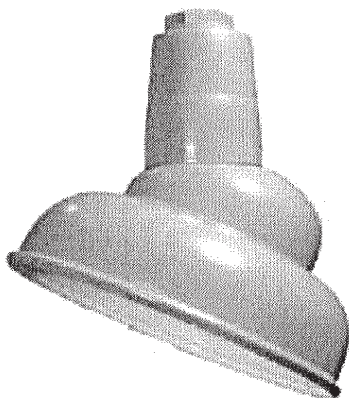


ANGLE REFLECTOR

Perfect for Highlighting Signs and Displays

CATALOG #	DIAM. (D)	HEIGHT (H)	MAX. WATT.
AA-7	7"	7"	150W
AA-9	9"	9"	150W
AA-11	11"	10"	200W
AA-14	14"	14"	200W

AA-11E & AA-14E-ANGLE ROUND REFLECTOR



AA-11E AA-14E ANGLE ROUND REFLECTOR

CLASSIC ELEGANCE AND SIMPLICITY OF DESIGN

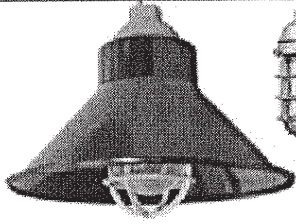
ANGLE ROUND REFLECTOR AA-11E-LG shown:
Light Green Finish, 11" Diameter
Available in standard colors plus satin nickel and solid copper.

CATALOG #	DIAM. (D)	HEIGHT (H)	MAX. WATT.
AA-11E	11"	10-1/4"	200W
AA-14E	14"	12"	200W



Fixture type "A"

H REFLECTOR



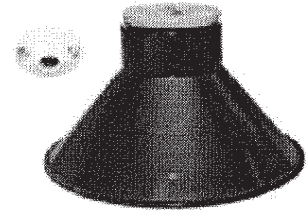
H12-AVP21
WITH AVP21



H REFLECTOR

FOR PORCELAIN CEILING LAMP HOLDERS KEYLESS
OR VAPOR PROOF FIXTURE (ORDER SEPARATELY)

CATALOG #	DIAM.(D)	HEIGHT (H)
H12	12"	6"
H16	16"	10"
H20	20"	12"
H12-AVP21	12"	6"
H16-AVP21	16"	10"
H20-AVP-21	20"	12"



H12
WITH PORCELAIN CEILING
LAMP HOLDERS KEYLESS

Available in standard colors plus satin nickel and solid copper.

TECHNICAL INFORMATION

AD-12 & AH-12

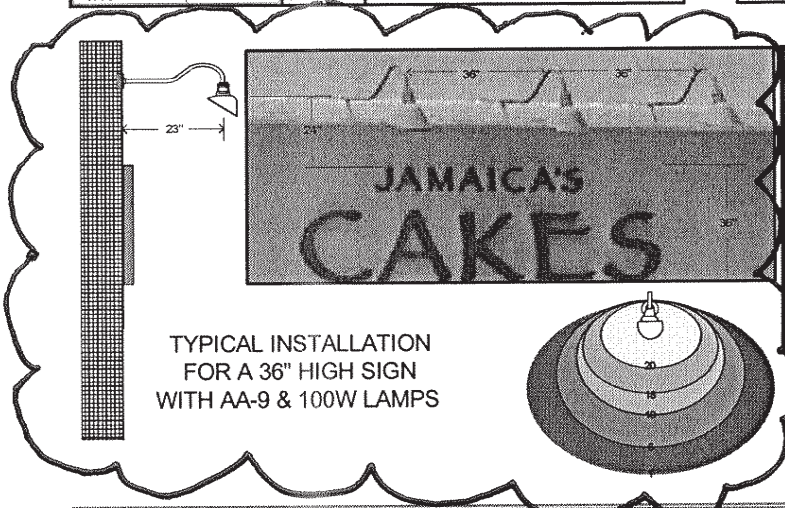
200 A21 LAMPS
4010 LUMENS-SPAC.CRIT.=1.0

ANG.	CP.	LUM.	ZONE	LUMENS	%LAMP									
0	1357		0-30	1033	25.7									
5	1331	127	0-60	2834	70.6									
15	1268	360	0-90	3206	82.1									
25	1181	546	90-180	0	0									
35	1043	653	0-180	3298	82.1									
45	883	670												
55	515	478	Rf	20										
65	263	271	Rc	80	50	10	0							
75	139	148	Rw	70	50	30	10	50	30	10	0			
85	38	43	Rcr											
90	0	0	0	98	98	98	91	91	84	84	82			
95	0	0	1	90	87	84	81	81	79	77	75	74	72	71
105	0	0	2	83	77	71	67	72	68	65	67	64	62	60
115	0	0	3	76	68	62	57	64	59	55	60	56	53	52
125	0	0	4	70	61	54	49	58	52	48	54	50	47	45
135	0	0	5	65	55	48	42	52	46	42	49	44	41	39
145	0	0	6	60	49	42	37	47	41	37	44	40	36	35
155	0	0	7	56	45	38	33	43	37	33	41	36	32	31
165	0	0	8	52	41	34	30	39	34	29	37	33	29	28
175	0	0	9	48	38	31	27	36	31	27	35	30	26	25
180	0	0	10	45	35	29	24	34	28	24	32	27	24	23

AC-14 AUL-16

150 A21 LAMPS
2850 LUMENS-SPAC.CRIT.=1.8

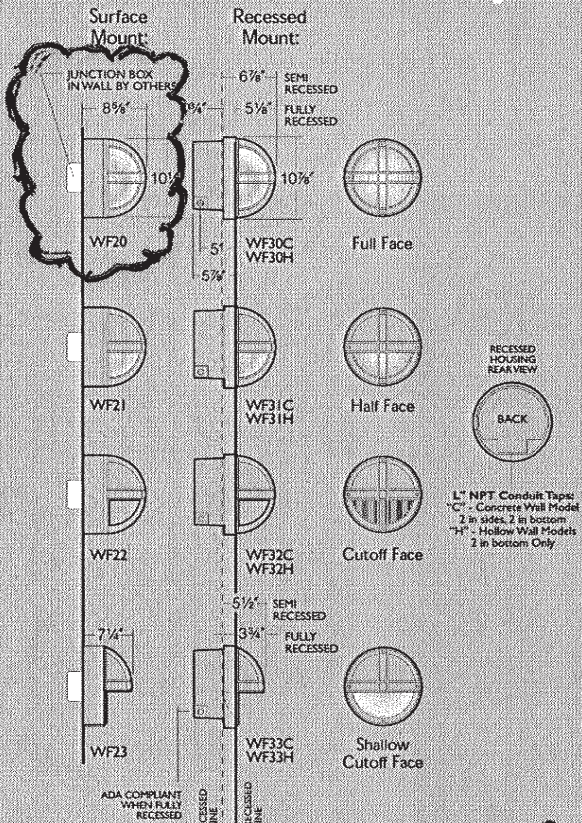
ANG.	CP.	LUM.	ZONE	LUMENS	%LAMP									
0	716		0-30	542	19									
5	686	66	0-60	1798	63									
15	653	185	0-90	2439	85.5									
25	629	291	90-180	5	0.1									
35	610	381	0-180	2444	85.7									
45	561	434												
55	493	441	Rf	20										
65	397	387	Rc	80	50	10	0							
75	215	218	Rw	70	50	30	10	50	30	10	0			
85	23	36	Rcr											
90	5	0	0	102	102	102	95	95	95	87	87	87	88	
95	0	5	1	93	88	84	81	83	80	77	78	74	72	70
105	0	0	2	83	76	70	64	71	66	62	65	62	59	57
115	0	0	3	75	68	58	52	62	56	51	57	53	49	47
125	0	0	4	69	58	50	43	54	48	42	50	45	41	39
135	0	0	5	63	51	43	37	48	41	36	45	39	35	33
145	0	0	6	58	46	37	32	43	36	31	40	35	31	29
155	0	0	7	53	41	33	28	39	32	27	36	31	27	25
165	0	0	8	49	37	30	24	35	29	24	33	28	24	22
175	0	0	9	46	34	27	22	33	26	22	31	25	21	20
180	0	0	10	43	31	24	20	30	24	19	28	23	19	18



Fixture type "B"



Luminaire Specifications



Housing: Surface Mount: Die-cast, low copper (<6% Cu) aluminum alloy with double side walls. Zinc plated steel mounting plate supplied for mounting to standard 3" or 4" junction box.

Recessed Concrete: Die-cast, low copper (<6% Cu) aluminum alloy with clear anodize under powder coat finish to match louver and face plate. Integral junction box (21 cubic inch volume) with four 3/4" NPT conduit taps. Presswood niche cover provided as temporary protection against moisture.

Recessed Hollow Wall: Die-cast, low copper (<6% Cu) aluminum alloy with clear anodize under powder coat finish to match louver and face plate. Integral junction box (21 cubic inch volume) with four 3/4" NPT conduit taps. Presswood niche cover provided as temporary protection against moisture. Supplied with adjustable stud mount brackets plus insulation detector in place of one side conduit tap. Quick disconnect plug supplied for electrical module.

Face Plate: Die-cast, low copper (<6% Cu) aluminum alloy with vertical and horizontal double ribs covering the full hemisphere. Ribs are minimum 3/8" depth and 3/16" thickness. Secures to housing with four stainless steel captive socket head screws.

Half Face: Solid upper half

Cutoff Face: Solid upper half and solid lower half with vertical light baffles.

Shallow Cutoff Face: Solid upper half protruding 3/4" from housing and concave lower half.

Lens: Molded and heat treated glass, 3/16" minimum thickness with internal sandblast. Retained in faceplate and sealed with a one-piece silicone gasket.

Full and Half Face: Choice of smooth (S) or internal prisms (P).

Cutoff and Shallow Cutoff Face: Flat tempered glass only.

LED Driver: 1or 2 constant current electronic driver(s). Rated for 15 watts each: 15W=900lm, 30W=1800lm. Available in 120V or 277V input. -40°F starting temperature. All drivers are Underwriters Laboratories recognized.

Finish: Super TGIC thermoset polyester powder coat paint, 2.5 mil nominal thickness, applied over a titanated zirconium conversion coating; 2500 hour salt spray test endurance rating. Standard colors are Black, Dark Bronze, Light Gray, Stealth Gray, Platinum Silver, or White. Custom colors are available, consult representative.

Pour Items: Recessed housings, devoid of all electrical components. Protective presswood niche covers are supplied to temporarily seal the open housings until the electrical modules and face plates are ready to install. Quick disconnect plugs supplied for electrical modules. For recessed hollow wall configurations, insulation detectors supplied in place of one conduit tap for insulation is permitted above the housing or within 3" of sides and bottom. Detectors will cut power if fixtures overheat due to insulation.

Finishing Items: Electrical modules and face plates. Each set of finishing items shall be in one container, clearly marked with the fixture catalog number.

Caution: Fixtures must be grounded in accordance with national, state, and/or local electrical codes. Failure to do so may result in serious personal injury.

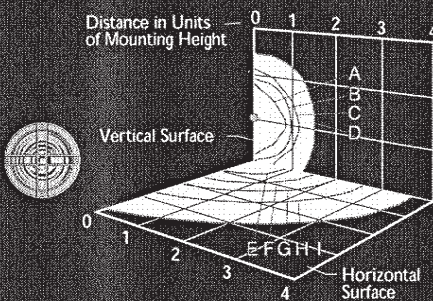
Bulbs are 22W (1200 Lumens)

Photometrics

WF20: Full Face - 30W LED

Initial Footcandles at Listed Mounting Height
1800 lumens

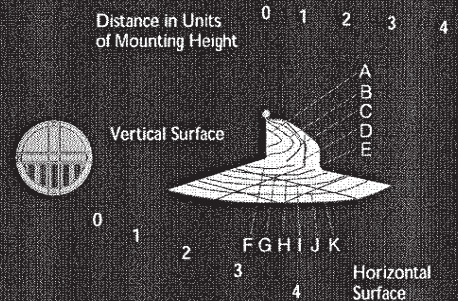
	7	8	9	10
A	.40	.31	.24	.20
B	.20	.15	.12	.10
C	.10	.10	.06	.05
D	.04	.03	.02	.02
E	.83	.64	.50	.41
F	.33	.25	.20	.16
G	.20	.15	.12	.10
H	.10	.10	.06	.05
I	.04	.03	.02	.02



WF22: Cutoff Face - 30W LED

Initial Footcandles at Listed Mounting Height
1800 lumens

	7	8	9	10
A	.40	.31	.24	.20
B	.20	.15	.12	.10
C	.10	.10	.06	.05
D	.04	.03	.02	.02
E	.01	.01	.01	.01
F	.83	.64	.50	.41
G	.33	.25	.20	.16
H	.20	.15	.12	.10
I	.01	.10	.06	.05
J	.04	.03	.02	.02
K	.01	.01	.01	.01



KIM LIGHTING
www.kimlighting.com

MAILING ADDRESS
P.O. BOX 60080
CITY OF INDUSTRY, CA
91716-0080

BUSINESS ADDRESS
16555 EAST GALE AVENUE
CITY OF INDUSTRY, CA 91745
PHONE: 626.968.5666
FAX: 626.369.2695

Printed in U.S.A.
5504308296
Version 2.0 (10/08)

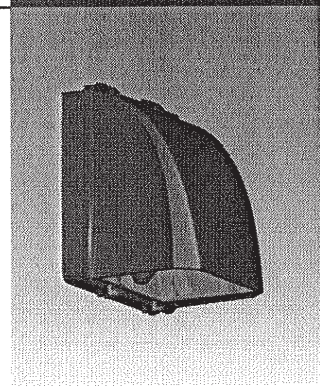
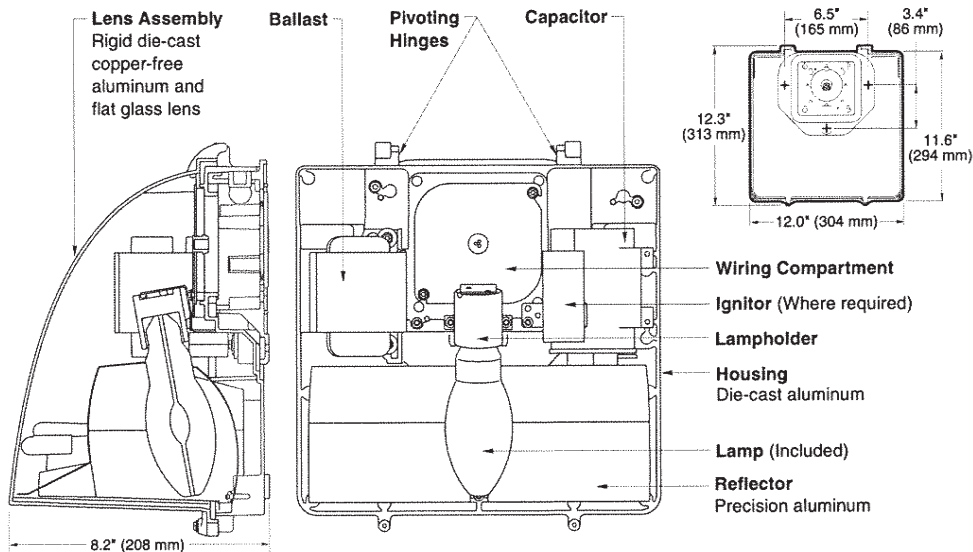


Fixture Type "C"

DIRECT MOUNT

12" FULL CUTOFF WALL PACK

**GWCO-12
SERIES**



SPEC #	WATTAGE	CATALOG #
PULSE START METAL HALIDE		
	125W PSMH	MGWC0612-(a)(b)
	150W PSMH	MGWC0615-(a)(b)
METAL HALIDE		
	50W MH	MGWC0405-(a)(b)
	70W MH	MGWC0407-(a)(b)
	100W MH	MGWC0410-(a)(b)
	175W MH	MGWC0417-(a)(b)
HIGH PRESSURE SODIUM		
	35W HPS	MGWC0503-(a)(b)
	50W HPS	MGWC0505-(a)(b)
	70W HPS	MGWC0507-(a)(b)
	100W HPS	MGWC0510-(a)(b)
	150W HPS	MGWC0515-(a)(b)

Specify (a) Voltage & (b) Options.

(a) VOLTAGE SUFFIX KEY	
D	120/277V (Standard: 125W PSMH; 50 – 100W MH; 50W HPS)
M	120/208/240/277V (Standard: 150W PSMH; 175W MH; 70 – 150W HPS)
T	120/277/347V (Canada Only) (Standard: 150W PSMH; 70 – 175W MH; 70 – 150W HPS)
1	120V (Standard: 35W HPS)
2	277V
27	277V Reactor (150W PSMH Only)
3	208V
4	240V
5	480V (175W MH; 70 – 150W HPS)
6	347V (Canada Only)

For voltage availability outside the US and Canada, see Bulletin TD-9 or contact your Ruud Lighting authorized International Distributor.

(b) OPTIONS (factory-installed)	
-(a)F	Fusing
-(a)P	Button Photocell
Q	Quartz Standby (includes 100W quartz lamp) (N/A on 277V Reactor)

Specify (a) Single Voltage — See Voltage Suffix Key

GENERAL DESCRIPTION

Full Cutoff Wall Pack fixture for HID lamp, totally enclosed. Housing is seamless copper-free die-cast aluminum. Lens assembly consists of a hinged, rigid die-cast copper-free aluminum frame and clear borosilicate glass lens held securely inside. Lens frame is easily removable and allows for easy attachment and serviceability using top pivoting hinge. Complete silicone gasketing around lens and gasketing at mounting provide a watertight seal. A precision specular aluminum reflector provides forward throw with wide distribution to ensure wide fixture spacings and maximum light levels. Fixture design provides excellent IES Full Cutoff light distribution without glare. The optical chamber is sealed to reduce dirt and insect contamination. Furnished with e-coated, copper-free, lightweight mounting box designed for installation over standard 4-inch square or octagonal and single-gang J boxes and for conduit entry from top, sides and rear. Designed and approved for easy through-wiring. All fixtures use vertical-lamp position.

ELECTRICAL

Fixture includes clear, medium-base lamp. Pulse-rated porcelain enclosed, 4kv-rated screw-shell-type lampholder. Lamp ignitor included where required. Fixtures require a minimum 90°C temperature feed wire. All ballast assemblies are high-power factor and use the following circuit types:

Reactor (277V PSMH)
150W PSMH

Reactor
120V: 35 – 150W HPS

HX — High Reactance
50 – 100W MH; 50 – 150W HPS

CWA — Constant Wattage Autotransformer
125 & 150W PSMH; 175W MH

LABELS

ANSI lamp wattage label supplied, visible during relamping. UL Listed in the US and Canada for wet locations.

FINISH

Exclusive Colorfast DeltaGuard™ finish features an E-coat epoxy primer with medium bronze ultra-durable powder topcoat, providing excellent resistance to corrosion, ultraviolet degradation and abrasion. The finish is covered by our seven-year limited warranty.

PATENTS

6,867,959 and Patents Pending.

ACCESSORIES

PC-1	Button Photocell (for fixtures set to 120V)
PC-2	Button Photocell (for fixtures set to 208, 240, 277V)
PC*6	Button Photocell (for fixtures set to 347V)

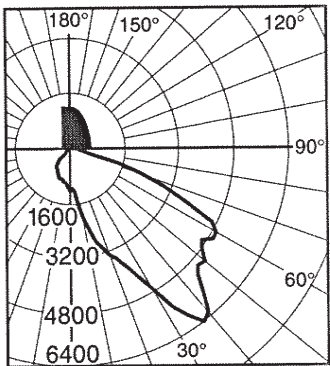
Fixture Type "C"

**GWCO-12
SERIES**

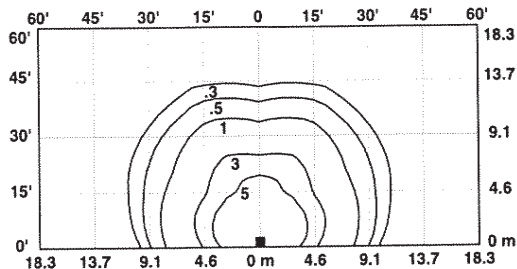
DIRECT MOUNT

12" FULL CUTOFF WALL PACK

Isofootcandle plots show initial footcandles at grade. (Footcandles ÷ 0.0929 = Lux)



**Candlepower Distribution Curve of 175W MH
12" AeroDome Full Cutoff Wall Pack.**



**Isofootcandle plot of one 175W MH
12" AeroDome Full Cutoff Wall Pack at 15' (4.6 m)
mounting height (plan view).**





KEY NOTES:

- B-1/8" Aluminum panel
- C- .063 Welded Aluminum Returns
- D- .080 Aluminum Backer Plate
- E- 1" Trim Cap
- F- Internal LED illumination (white)
- G- Secondary Lead to Remote Power Supply
- H- Wall Section
- I- Nighttime Illumination Rendering

FINISHES:

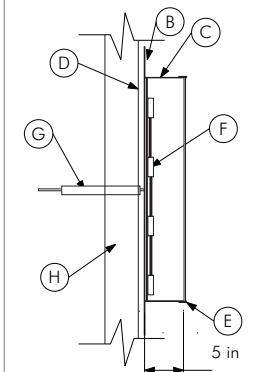
- 1 shot lettering enamel-Lighter shade of building color
- Mathews Satin Urethane-Black (panel, returns/trim cap)
- 7328 White acrylic
- Oracal Translucent Vinyl-Jungle Green

CALCULATIONS:

Signable Area:
 7' 6" x 27' 6" = 206 sq.ft.
 45' lineal building frontage

Sign Dimensions:
 Box 1 = 12' 0" x 7' 6" = 90sq.ft.
 Net = 84.96sq.ft.

LETTER SECTION:



S H E E T



126 S. FIRST ST. MT HOREB, WI 53537 P-608.437.2320
 WWW.SIGNARTMADISON.COM

CUSTOMER APPROVAL: _____

DATE: _____

LANDLORD APPROVAL: _____

DATE: _____

By signing this approval you are hereby authorizing Sign Art Studio LLC to proceed with the work as described. Any deviation from these specifications will become the customer's financial responsibility.

© The above artwork and or conceptual design, less customer provided artwork or plans, is property of Sign Art Studio and may not be reproduced without written consent .

SCALE: 1/2" = 1'

WS-1

SIGNAGE ELEVATIONS : WS - 1



KEY NOTES:

- A- Hand painted Logo.
- B- Customer provided painted stripe.

FINISHES:

- White
- Customer Provided TBD

CALCULATIONS:

Signable Area:
15' 3" x 25' 0" = 381.25 sq.ft.

Sign Dimensions:
Box 1 = 6' 0" x 1' 6" = 58.5sq.ft.

Net = 9sq.ft.



126 S. FIRST ST. MT HOREB, WI 535372 P-608.437.2320
WWW.SIGNARTMADISON.COM

CUSTOMER APPROVAL:

DATE:

LANDLORD APPROVAL:

DATE:

By signing this approval you are hereby authorizing Sign Art Studio LLC to proceed with the work as described. Any deviation from these specifications will become the customer's financial responsibility.

© The above artwork and or conceptual design, less customer provided artwork or plans, is property of Sign Art Studio and may not be reproduced without written consent .

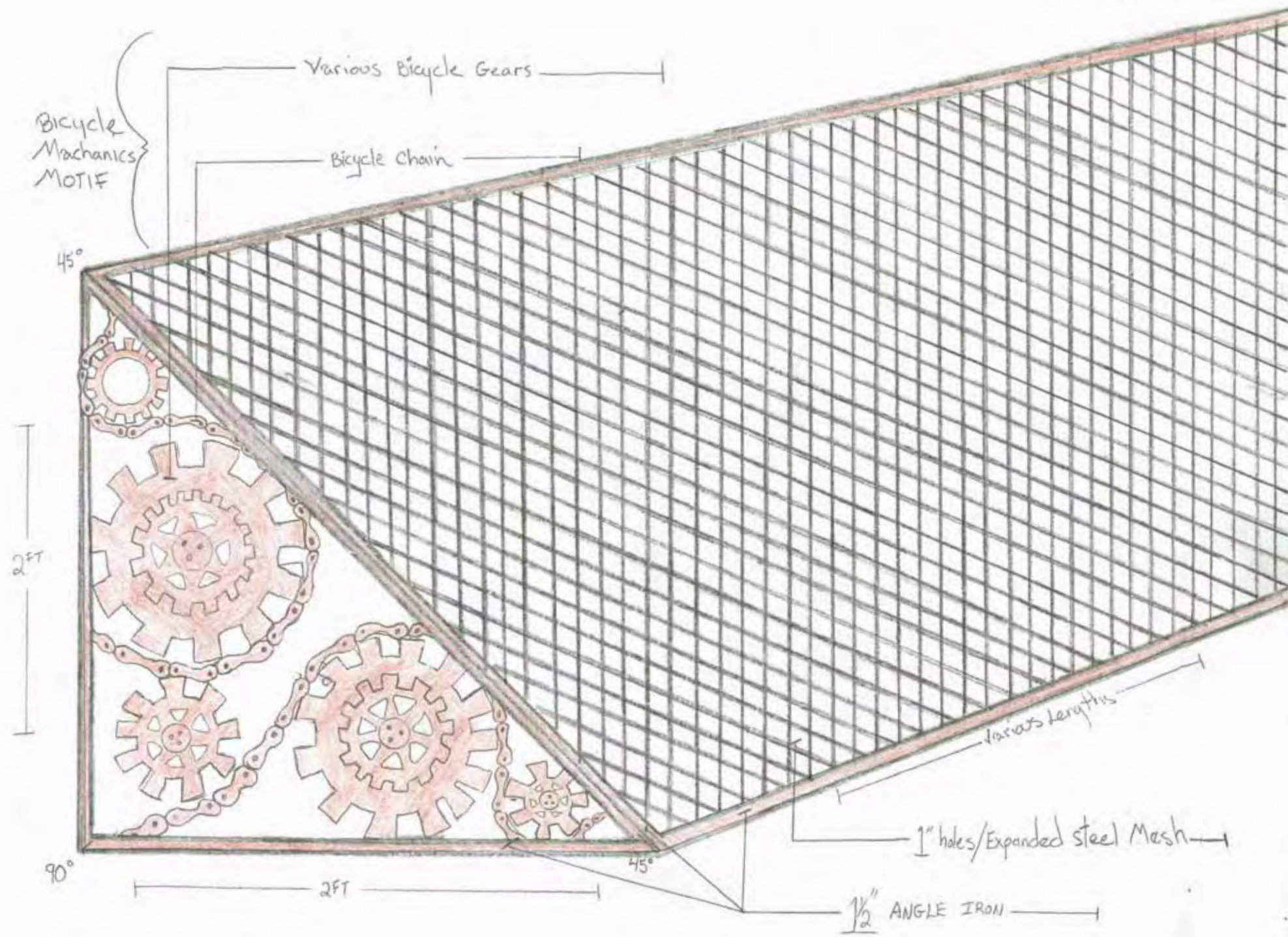
SCALE: 1/2" = 1'

S H E E T

WS-2

SIGNAGE ELEVATIONS : WS - 2

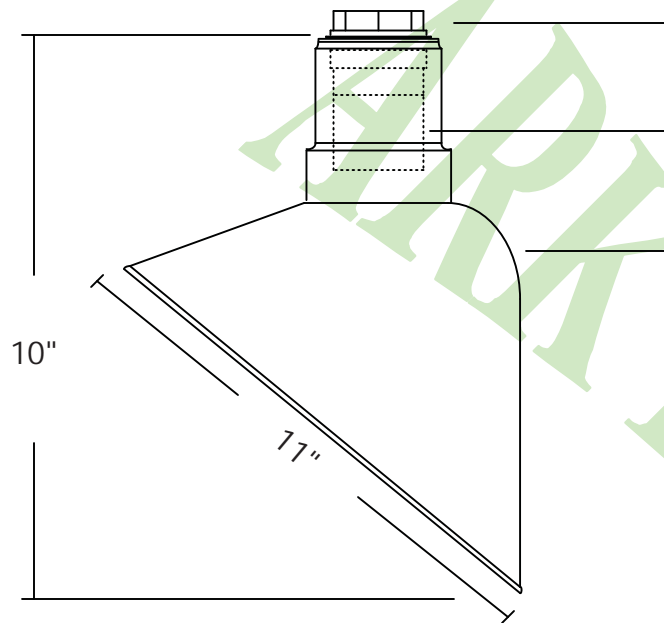
02/17/11 *[Signature]*





AA-11

11" ANGLE REFLECTOR 200W Max. INC



COVER NUT. Die cast aluminum with 1/2" N.P.T. or 3/4" N.P.T. accepts conduit pipe or cord strain relief.

SOCKET. Two-piece heavy duty ceramic medium base socket.

SHADE. Heavy gauge cold rolled steel, zinc anodized and coated with genuine powder or electro plating. Galvanized finish is hot zinc dip. (Also available in solid copper)

ACCESSORIES AND OTHER OPTIONS

- Wireguard
 - 26W, 32W & 42W Fluorescent 120V (ballast mounted inside the neck, globe option is required for outdoor use)
 - 35 to 100W High pressure sodium (remote ballast, globe option is required for outdoor use)
 - 50 to 150W Metal halide (remote ballast, globe option is required or use MP rated lamp for open fixture)
- NOTE: 42W CF & 150W MH option must use large globe

FINISHES

0=white, 1=black, 2=blue, 3=green, 4=dark bronze, 5=yellow, 6=red, 8=galvanized, 10=unfinish, 11=sa copper, 12=satin aluminum, 15=painted 20=sld copper & 21=sld brass

MUST BE INSTALLED BY A QUALIFIED ELECTRICIAN

ETL LISTED FOR WET LOCATION

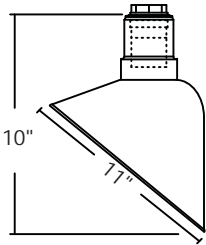




L I G H T I N G

AA-11

11" ANGLE REFLECTOR 200W Max. INCANDESCENT



COVER NUT. Die cast aluminum with 1/2" N.P.T. or 3/4" N.P.T. accepts conduit pipe or cord strain relief.

SOCKET. Two-piece heavy duty ceramic medium base socket.

SHADE. Heavy gauge cold rolled steel and coated with genuine powder or electro plating. Galvanized finish is hot zinc dip.

<p><u>Incandescent</u></p> <p><input type="checkbox"/> 200W</p>	<p><u>Hub Size</u></p> <p><input type="checkbox"/> 1/2"</p> <p><input type="checkbox"/> 3/4"</p>	<p><u>Ball Aligner for stem mount</u> <u>Slope Ceiling 3/4" hub w/ 1/2"</u> <u>reducer</u></p> <p><input type="checkbox"/> ACN002 (Round)</p> <p><input type="checkbox"/> ACN003 (Square)</p>	<p><u>Colors & Finishes</u></p> <p><input type="checkbox"/> 0 White</p> <p><input type="checkbox"/> 1 Black</p> <p><input type="checkbox"/> 2 Blue</p> <p><input type="checkbox"/> 3 Green</p> <p><input type="checkbox"/> 4 Dark Bronze</p> <p><input type="checkbox"/> 5 Yellow</p> <p><input type="checkbox"/> 6 Red</p> <p><input type="checkbox"/> 7 Yellow Zinc</p> <p><input type="checkbox"/> 8 Galvanized</p> <p><input type="checkbox"/> 10 Painted Chrome</p> <p><input type="checkbox"/> 11 Satin Copper</p> <p><input type="checkbox"/> 12 Satin Nickel</p> <p><input type="checkbox"/> 15 Painted Copper</p> <p><input type="checkbox"/> 20 Solid Copper</p> <p><input type="checkbox"/> 21 Solid Brass</p> <p><input type="checkbox"/> 22 Unfinished</p>
<p><u>Intregal Ballast.</u> <u>Globe is required for wet</u> <u>location.</u></p> <p><input type="checkbox"/> 13CF-120</p> <p><input type="checkbox"/> 18CF-120</p> <p><input type="checkbox"/> 26CFT-120</p> <p><input type="checkbox"/> 32CFT-120</p>	<p><u>Mounting Options</u></p> <p><input type="checkbox"/> stem</p> <p>____ " Length</p>	<p><u>HD box cover for stem mount</u> <u>Flat Ceiling</u></p> <p><input type="checkbox"/> ACN009 (1/2)</p> <p><input type="checkbox"/> ACN010 (3/4)</p>	<p><u>Accessories</u></p> <p><u>Colored Cap</u></p> <p><input type="checkbox"/> ACC-002</p> <p><u>Wireguard</u></p> <p><input type="checkbox"/> AG111</p>
<p><u>Remote ballast.</u> <u>Globe is required for wet</u> <u>location.</u></p> <p><input type="checkbox"/> 26CFT-UNV</p> <p><input type="checkbox"/> 32CFT-UNV</p> <p><input type="checkbox"/> 42CFT-UNV</p>	<p><u>Gooseneck w/ HD box wall plate</u></p> <p><input type="checkbox"/> AGB24-ELW</p> <p><input type="checkbox"/> AGB101</p> <p><input type="checkbox"/> AGB101-48L</p> <p><input type="checkbox"/> AGB102</p> <p><input type="checkbox"/> AGB103</p> <p><input type="checkbox"/> AGB104</p> <p><input type="checkbox"/> AGB105</p> <p><input type="checkbox"/> AGB106</p> <p><input type="checkbox"/> AGB110</p> <p><input type="checkbox"/> AGB111</p> <p><input type="checkbox"/> AGB110</p> <p><input type="checkbox"/> AGB111</p> <p><input type="checkbox"/> AGB141</p> <p><input type="checkbox"/> AGB1535</p>	<p><u>Globe & Guard</u></p> <p><input type="checkbox"/> AVX100DG Clear globe & guard</p> <p><input type="checkbox"/> AVX100GL Clear globe</p> <p><input type="checkbox"/> AVX100GLO Frost globe</p> <p><input type="checkbox"/> AVX100PRIS Prismatic Globe</p>	
<p><u>Remote ballast.</u> <u>Globe is required for wet</u> <u>location.</u></p> <p><input type="checkbox"/> 35W HPS</p> <p><input type="checkbox"/> 50W HPS</p> <p><input type="checkbox"/> 70W HPS</p> <p><input type="checkbox"/> 100W HPS</p> <p><input type="checkbox"/> 150W HPS</p>	<p><u>Wall bracket w/ ballast box</u></p> <p><input type="checkbox"/> AGB204-WM</p>	<p><u>Globe & Guard</u> <u>For 42W CFT & 150W HPS</u></p> <p><input type="checkbox"/> AVX200DG Clear globe & guard</p> <p><input type="checkbox"/> AVX200GL Clear globe</p> <p><input type="checkbox"/> AVX200GLO Frost globe</p> <p><input type="checkbox"/> AVX200PRIS Prismatic Globe</p>	
<p><u>Remote ballast.</u> <u>Globe is required for wet & dry</u> <u>location or open fixture with MP</u> <u>socket.</u></p> <p><input type="checkbox"/> 50W MH</p>	<p><u>Wall bracket</u></p> <p><input type="checkbox"/> AWM-207</p>	<p><u>Remote box</u></p> <p><input type="checkbox"/> Indoor</p> <p><input type="checkbox"/> Outdoor</p>	
<p><u>Remote ballast.</u> <u>Open fixture only</u></p> <p><input type="checkbox"/> 70W MH</p> <p><input type="checkbox"/> 100W MH</p> <p><input type="checkbox"/> 150W MH</p>	<p><u>Pole mount</u> <u>(specify slip fitter size)</u></p> <p><input type="checkbox"/> APB201</p> <p><input type="checkbox"/> APB202</p> <p><input type="checkbox"/> APB203</p> <p><input type="checkbox"/> APB204</p> <p><input type="checkbox"/> APB206</p> <p><input type="checkbox"/> APB207-2X</p> <p><input type="checkbox"/> 2" slip fitter</p> <p><input type="checkbox"/> 3" slip fitter</p>		

JOBNAME: _____

SPECIFIER: _____





VIEW FROM 967 SOUTH PARK STREET LOOKING NORTHWEST



VIEW FROM 967 SOUTH PARK STREET LOOKING NORTH



VIEW FROM PARR STREET LOOKING SOUTH



VIEW FROM PARK STREET LOOKING EAST



Barnett Architecture

118 NORTH BREEZE TERRACE
SUITE I
MADISON, WISCONSIN 53726
608.233.4538
barnettarchitecture.com

NEW LOCATION FOR:
BARRIQUES

961 SOUTH PARK ST.
967. SOUTH PARK ST.
MADISON, WI 53715



**PRELIMINARY
NOT FOR CONSTRUCTION**

DRAWING ISSUE DATES
2-23-2010

P.2

This document contains confidential or proprietary information. Neither this document nor the information contained herein is to be used or disclosed other than as stated or in part, except as authorized.



VIEW FROM PARK STREET LOOKING NORTH



VIEW FROM PARK STREET LOOKING NORTHEAST



VIEW FROM PARK STREET LOOKING NORTHEAST



VIEW FROM PARK STREET LOOKING NORTH



Barnett Architecture

118 NORTH BREEZE TERRACE
SUITE I
MADISON, WISCONSIN 53726
608.233.4538
barnettarchitecture.com

NEW LOCATION FOR:
BARRIQUES

961 SOUTH PARK ST.
967. SOUTH PARK ST.
MADISON, WI 53715



PRELIMINARY
NOT FOR CONSTRUCTION

DRAWING ISSUE DATES
2-23-2010

P.1

This document contains confidential or proprietary information. Neither this document nor the information contained herein is to be used or disclosed other than as stated or in part, except as authorized.

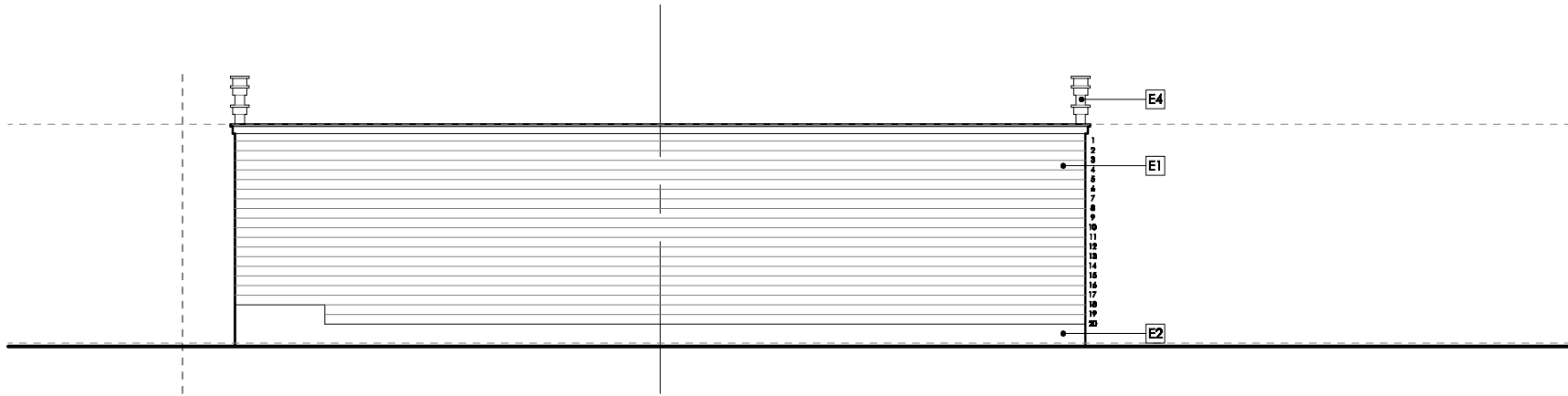


Barnett Architecture

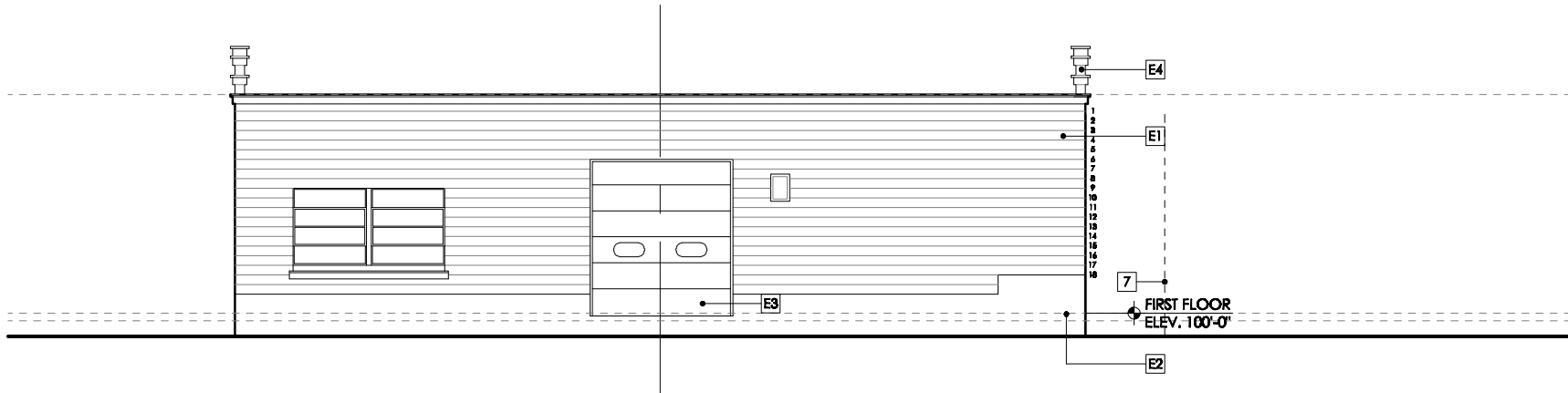
118 NORTH BREEZE TERRACE
SUITE I
MADISON, WISCONSIN 53726
608.233.4538
barnettarchitecture.com

NEW LOCATION FOR:
BARRIQUES

961 SOUTH PARK ST.
967. SOUTH PARK ST.
MADISON, WI 53715



1 SOUTH ELEVATION - exist.
SCALE: 1/8" = 1'-0"



2 NORTH ELEVATION - exist.
SCALE: 1/8" = 1'-0"



**PRELIMINARY
NOT FOR CONSTRUCTION**

DRAWING ISSUE DATES
2-23-2010

4.4

This document contains confidential or proprietary information. Neither this document nor the information contained herein is to be used or disclosed other than as stated or in part, except as authorized.

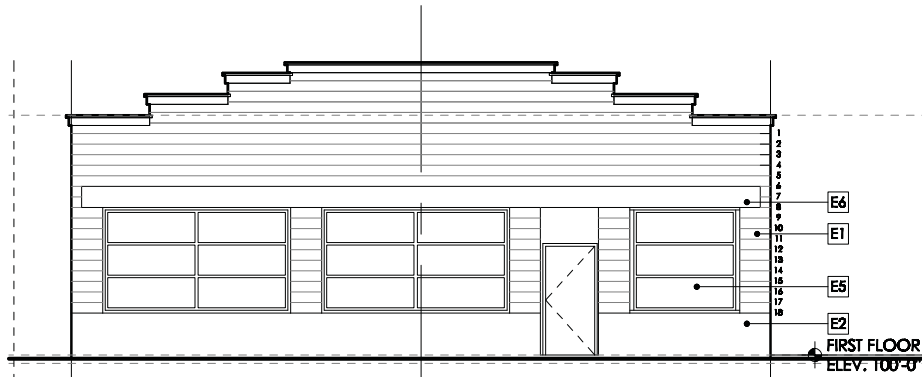


Barnett Architecture

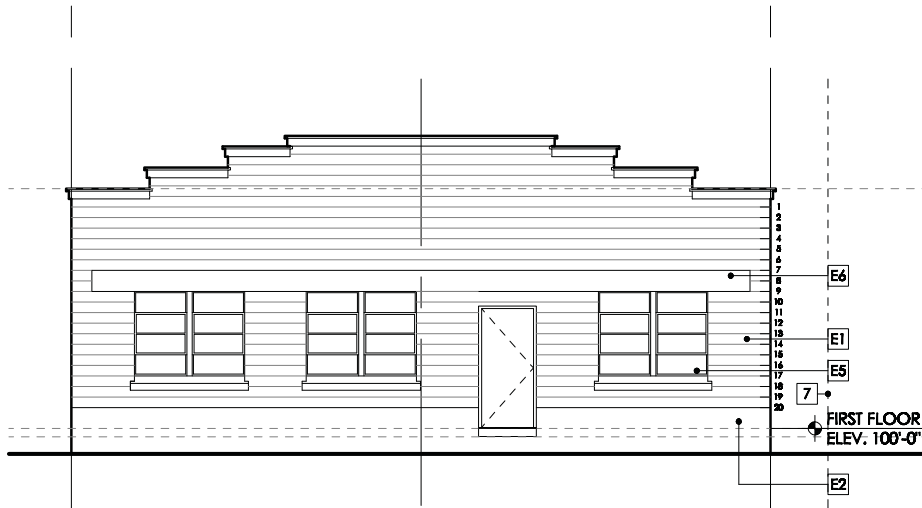
118 NORTH BREEZE TERRACE
SUITE I
MADISON, WISCONSIN 53726
608.233.4538
barnettarchitecture.com

NEW LOCATION FOR:
BARRIQUES

961 SOUTH PARK ST.
967. SOUTH PARK ST.
MADISON, WI 53715



1 WEST ELEVATION - exist.
SCALE: 1/8" = 1'-0"



2 EAST ELEVATION - exist.
SCALE: 1/8" = 1'-0"



**PRELIMINARY
NOT FOR CONSTRUCTION**

DRAWING ISSUE DATES
2-23-2010

4.3

This document contains confidential or proprietary information. Neither this document nor the information contained herein is to be used or disclosed other than as stated or in part, except as authorized.

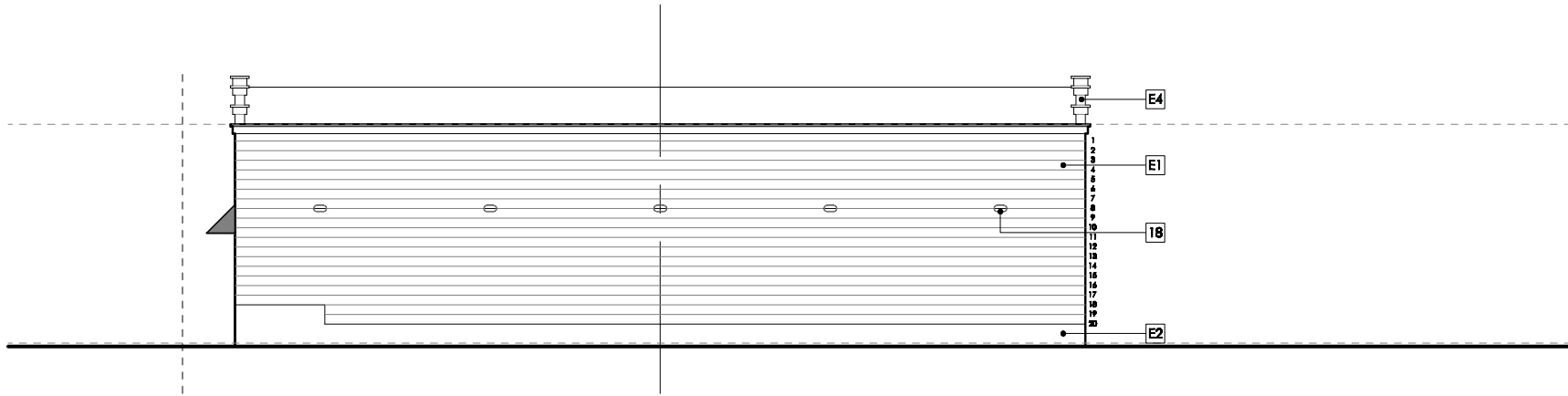


Barnett Architecture

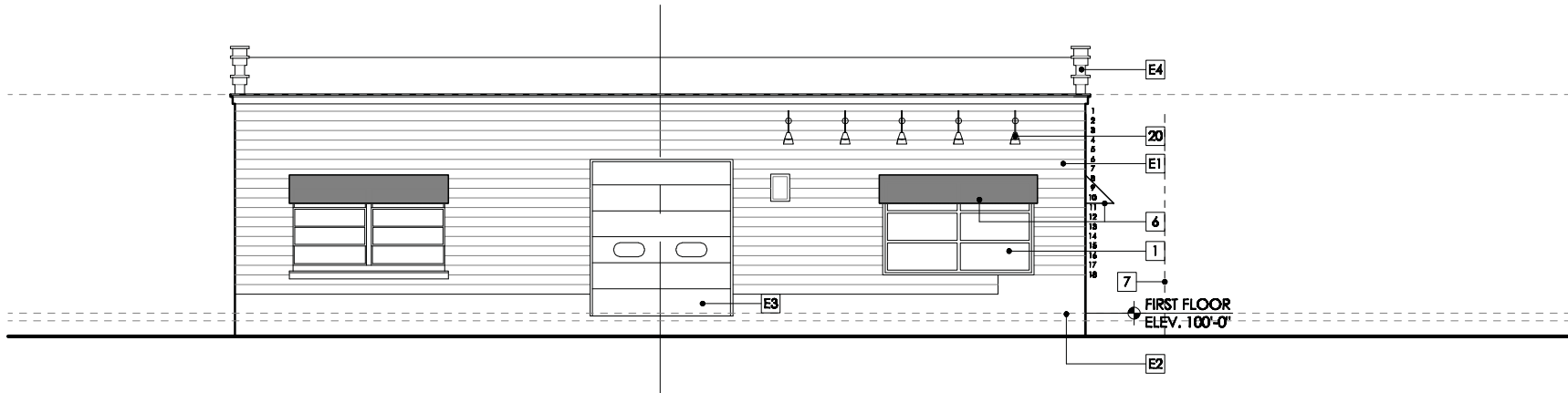
118 NORTH BREEZE TERRACE
SUITE I
MADISON, WISCONSIN 53726
608.233.4538
barnettarchitecture.com

NEW LOCATION FOR:
BARRIQUES

961 SOUTH PARK ST.
967. SOUTH PARK ST.
MADISON, WI 53715



1 SOUTH ELEVATION
SCALE: 1/8" = 1'-0"



2 NORTH ELEVATION
SCALE: 1/8" = 1'-0"



**PRELIMINARY
NOT FOR CONSTRUCTION**

DRAWING ISSUE DATES
2-23-2011

4.2

This document contains confidential or proprietary information. Neither this document nor the information contained herein is to be used or disclosed other than as stated or in part, except as authorized.

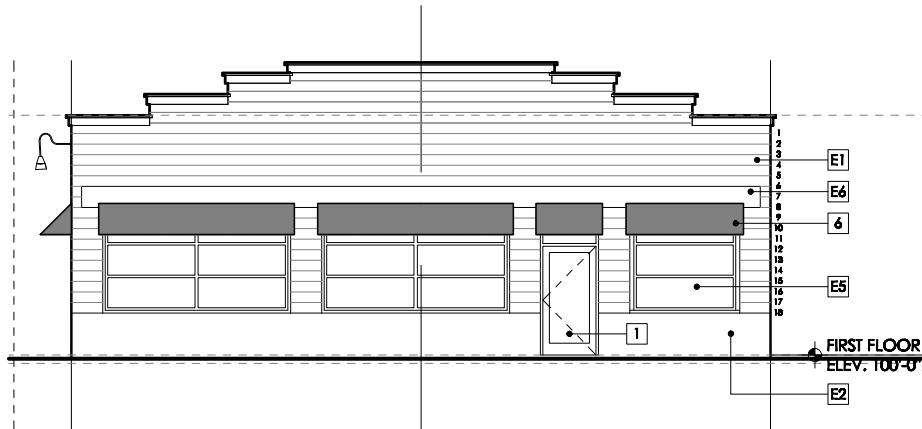


Barnett Architecture

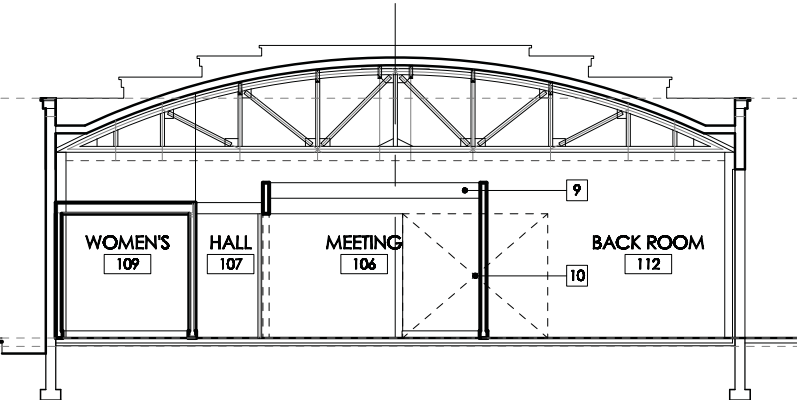
118 NORTH BREEZE TERRACE
SUITE I
MADISON, WISCONSIN 53726
608.233.4538
barnettarchitecture.com

NEW LOCATION FOR:
BARRIQUES

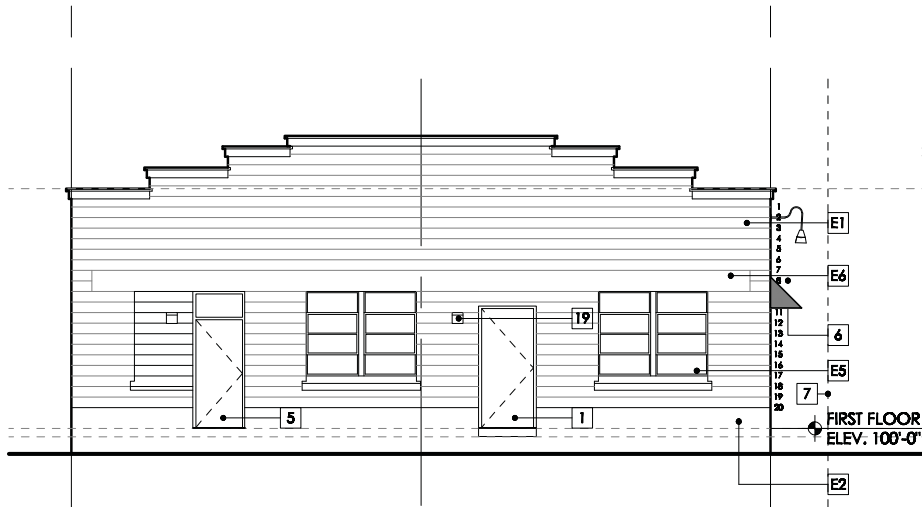
961 SOUTH PARK ST.
967. SOUTH PARK ST.
MADISON, WI 53715



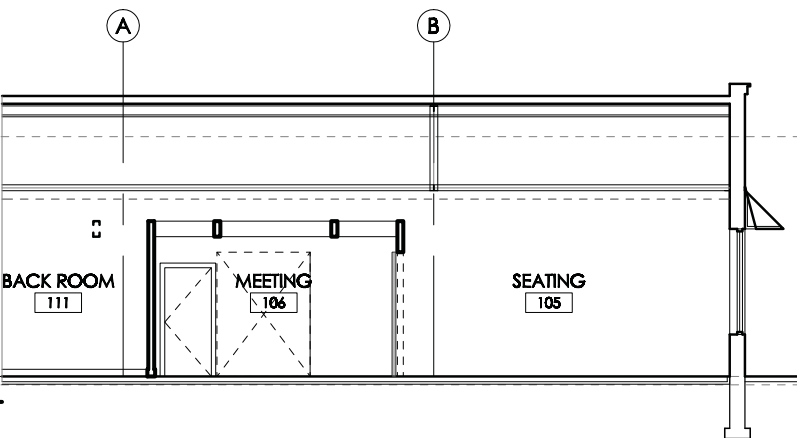
1 WEST ELEVATION
SCALE: 1/8" = 1'-0"



3 SECTION LOOKING WEST
SCALE: 1/8" = 1'-0"



2 EAST ELEVATION
SCALE: 1/8" = 1'-0"



4 SECTION LOOKING SOUTH
SCALE: 1/8" = 1'-0"

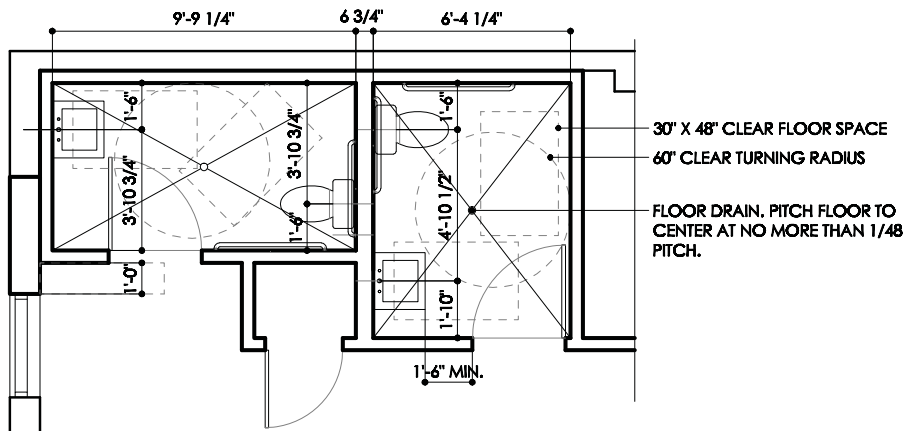


PRELIMINARY
NOT FOR CONSTRUCTION

DRAWING ISSUE DATES
2-23-2011

4.1

This document contains confidential or proprietary information. Neither this document nor the information contained herein is to be used or disclosed other than as stated or in part, except as authorized.



ADA DIMENSION NOTES

- T1. TO TOP OF SEAT.
- T2. TO CENTER OF TOILET PAPER DISPENSER.
- T3. TO TOP OF SANITARY NAPKIN DISPOSAL.
- T4. TO CENTER OF GRAB BAR.
- T5. TO BOTTOM OF MIRROR REFLECTIVE SURFACE.
- T6. TO TOP OF SINK EDGE.
- T7. CLEAR DIMENSION, MINIMUM.
- T8. TO CENTER OF SOAP DISPENSER CONTROL, MAX.
- T9. TO EDGE OF TOILET PAPER DISPENSER, MAX.



Barnett Architecture

118 NORTH BREEZE TERRACE
SUITE I
MADISON, WISCONSIN 53726
608.233.4538
barnettarchitecture.com

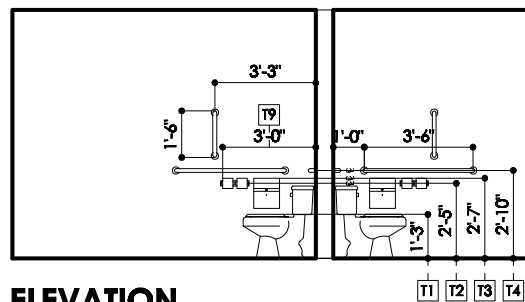
NEW LOCATION FOR:
BARRIQUES

961 SOUTH PARK ST.
967. SOUTH PARK ST.
MADISON, WI 53715



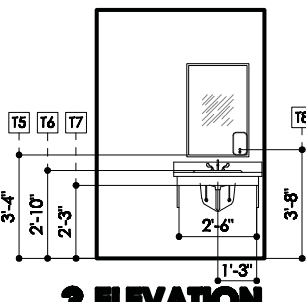
1 ENLARGED TOILET ROOM PLAN

SCALE: 1/4" = 1'-0"



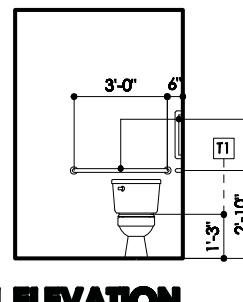
2 ELEVATION

SCALE: 1/4" = 1'-0"



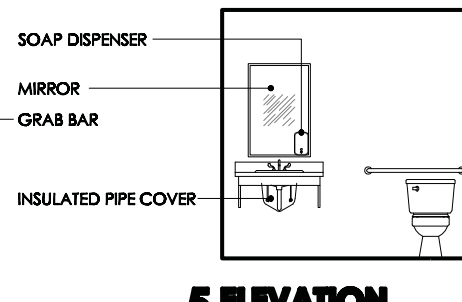
3 ELEVATION

SCALE: 1/4" = 1'-0"



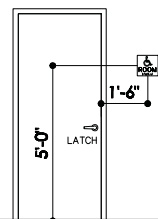
4 ELEVATION

SCALE: 1/4" = 1'-0"



5 ELEVATION

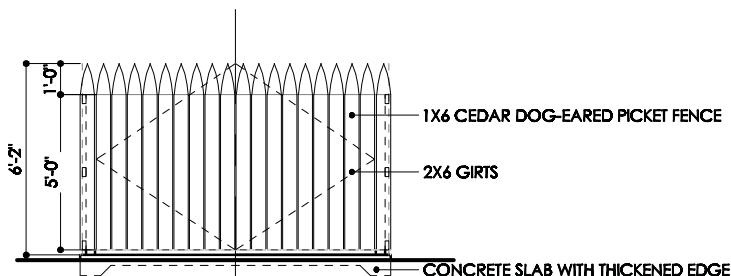
SCALE: 1/4" = 1'-0"



6 ADA SIGNAGE

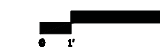
SCALE: 1/4" = 1'-0"

WHERE PERMANENT IDENTIFICATION IS PROVIDED FOR ROOMS AND SPACES, SIGNS SHALL BE INSTALLED IN THE WALL ADJACENT TO THE LATCH SIDE OF THE DOOR. WHERE THERE IS NO WALL SPACE TO THE LATCH SIDE OF THE DOOR, INCLUDING AT DOUBLE LEAF DOORS, SIGNS SHALL BE PLACED ON THE NEAREST ADJACENT WALL. MOUNTING HEIGHT SHALL BE 60" ABOVE FINISH FLOOR TO THE CENTERLINE OF THE SIGN. MOUNTING LOCATION FOR SUCH SIGNAGE SHALL BE SO THAT A PERSON MAY APPROACH TO WITHIN 3" OF SIGNAGE WITHOUT ENCOUNTERING PROTRUDING OBJECTS OR STANDING WITHIN THE SWING OF THE DOOR.



4 REFUSE ENCLOSURE

SCALE: 1/4" = 1'-0"



PRELIMINARY
NOT FOR CONSTRUCTION

DRAWING ISSUE DATES
2-23-2011

3.4

This document contains confidential or proprietary information. Neither this document nor the information contained herein is to be used or disclosed other than as stated or in part, except as authorized.

GENERAL NOTES FOR PROJECT

1. VERIFY EXISTING DIMENSIONS IN FIELD PRIOR TO CONSTRUCTION.
2. EXTERIOR DIMENSIONS ARE FROM OUTSIDE FACE OF SHEATHING TO OUTSIDE FACE OF SHEATHING/FACE OF FOUNDATION WALL.
3. INTERIOR DIMENSIONS ARE FROM FACE OF FINISH MATERIAL.
4. REPAIR AND MATCH EXISTING FINISHES.
5. SEE 3.3 FOR FINISH NOTES.
6. PROPOSED MECHANICAL, ELECTRICAL AND PLUMBING DEVICES AND EQUIPMENT ARE CONCEPTUAL ONLY AND ARE THE RESPONSIBILITY OF THE MEP CONTRACTORS.

EXISTING KEYED NOTES

- E1. EXISTING CMU.
- E2. EXISTING POURED CONCRETE WALL BASE.
- E3. EXISTING OVERHEAD DOOR.
- E4. EXISTING PARAPET.
- E5. EXISTING WINDOW.
- E6. EXISTING POURED CONCRETE LINTEL.

PROPOSED PLAN AND ELEVATION KEYED NOTES

1. REMOVE DOOR, FRAME AND ASSOCIATED CONSTRUCTION AND REPLACE WITH NEW DOOR AND TRANSOM WINDOW.
2. REMOVE SECTION OF EXISTING WALL WHERE WALL INFILL IS CLEAR FOR INSTALLATION OF NEW WINDOW TO MATCH ADJACENT.
3. MAINTAIN 12" X 48" CLEAR SPACE AT PULL SIDE OF DOOR.
4. SHADED AREA INDICATES VOLUME ABOVE EQUIPMENT 104, WOMEN'S 109 AND MENS. 110.
5. REMOVE EXISTING WINDOW AND SECTION OF CMU AS REQUIRED TO INSTALL PROPOSED DOOR ASSEMBLY AND INFILL CMU SECTION.
6. OUTLINE OF PROPOSED AWNING.
7. APPROXIMATE LINE OF PROPERTY LINE.
8. ADJUST THIS DIMENSION AS REQUIRED PER FIELD CONDITIONS, AS REQUIRED. HOLD OTHER DIMENSIONS.
9. WOOD CROSS WALL CROSS-BRACING
10. DOTTED OUTLINE OF BARN DOOR IN OPEN POSITION.
11. PROPOSED ELECTRICAL PANEL.
12. PROPOSED WATER SERVICE AND METER.
13. PROPOSED FURNACE.
14. PROPOSED MOP SINK.
15. PROPOSED HAND WASH SINK.
16. PROPOSED WATER HEATER.
17. PROPOSED WATER SOFTENER TANK.
18. LIGHT FIXTURE TYPE "A". 5 COUNT AT SOUTH WALL.
19. CUT-OFF SECURITY LIGHT FIXTURE TYPE "B". 2 COUNT AT EAST WALL.
20. GOOSE NECK LIGHT FIXTURE TYPE "C". 5 COUNT ON NORTH-PARR STREET.

ROOM FINISH SCHEDULE KEYED NOTES

1. CMU IS EXISTING EXCEPT AT INFILL AT DOOR 108 AND WINDOW A AREAS OF CONSTRUCTION.

DOOR SCHEDULE KEYED NOTES

1. CMU IS EXISTING EXCEPT AT INFILL AT DOOR 108 AND WINDOW A AREAS OF CONSTRUCTION.
 2. BARN DOOR ON TRACK.
 3. VERIFY SIZE WITH EXISTING OPENING.
 4. DOOR WITH INTEGRAL ALUMINUM FRAMED TRANSOM.
 5. FULL HEIGHT DOOR TO MATCH OR, AT OWNER OPTION, MINIMUM 84" TALL DOOR WITH BRAKE-METAL OR AZEK TRIM INFILL ABOVE DOOR HEAD. DOOR WIDTH TO SUIT EXISTING OPENING. VERIFY DIMENSION IN FIELD.
- H1. PRIVACY LOCKSET
H2. KEYED LOCKSET.

WINDOW SCHEDULE KEYED NOTES

1. MATCH WINDOW PATTERN, MATERIALS AND DETAILS ALONG PARK STREET.

ROOM FINISH SCHEDULE													
NO.	NAME	FLOOR	BASE	WALL				CEILING			NOTES	NO.	
				N	S	E	W	TYPE	HT.				
101	ENTRY	CONC-1	B-1	-	CMU-P	CMU-P	-	EX-P	VARIES	1	101		
102	PREP	CONC-1	B-1	GWB-P	GWB-P	GWB-P	GWB-P	EX-P	VARIES	1	102		
103	PREP	CONC-1	B-1	-	GWB-P	-	-	EX-P	VARIES	1	103		
104	EQUIPMENT	CONC-1	B-1	GWB-P	GWB-P	GWB-P	GWB-P	EX-P	VARIES		104		
105	SEATING	CONC-1	B-1	CMU-P	-	CMU-P	GWB-P	EX-P	VARIES		105		
106	MEETING	CONC-1	B-1	GWB-P	GWB-P	GWB-P	GWB-P	EX-P	VARIES		106		
107	HALL	CONC-1	B-1	GWB-P	GWB-P	-	-	EX-P	VARIES		107		
108	HALL	CONC-1	B-1	GWB-P	GWB-P	CMU-P	-	EX-P	VARIES		108		
109	WOMEN'S	CONC-1	B-1	GWB-P	GWB-P	GWB-P	GWB-P	GWB-P	8'-0"		109		
110	MEN'S	CONC-1	B-1	GWB-P	GWB-P	GWB-P	GWB-P	GWB-P	8'-0"		110		
111	BACK ROOM	CONC-1	B-1	CMU-P	GWB-P	CMU-P	GWB-P	EX-P	VARIES		111		
112	BACK ROOM	CONC-1	B-1	CMU-P	GWB-P	-	GWB-P	EX-P	VARIES	1	112		

DOOR SCHEDULE																		
DOOR																		
TAG	W	H	T	TYPE	MAT.	GLASS	LOUVER	U' CUT	HW	LBL.	FRAME					NOTES	TAG	
											MAT.	HEAD	JAMB	SILL				
101	41	84	1 3/4		ALUM						ALUM						3,4	
106A	36	84	1 3/4		SCW						WD.							
106B	72	84	1 3/4	-	SCW	-	-	-	-	-	WD.	-	-	-			2	
106C	111	84	1 3/4	-	SCW	-	-	-	-	-	WD.	-	-	-			2	
107A	30	84	1 3/4		SCW				H2		WD.							
108	36	84	1 3/4		HM						HM							
109	36	84	1 3/4		SCW				H1		WD.							
110	36	84	1 3/4		SCW				H1		WD.							
111A	34	84	1 3/4		SCW						WD.							
111B	40	91	1 3/4		HM						HM						5	
112	EXISTING																1	

WINDOW SCHEDULE							
TAG	STYLE	MANUF	MODEL	FRAME SIZE	ROUGH OPENING	NOTES	TAG
A	AWNING	MARVIN	CAWN4024	3'-4" X 1'-11 1/8"	3'-5" X 1'-11 5/8"	1	
ex	EXISTING WINDOW						ex

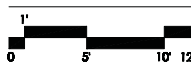
PRELIMINARY
NOT FOR CONSTRUCTION



Barnett Architecture
118 NORTH BREEZE TERRACE
SUITE 1
MADISON, WISCONSIN 53726
608.233.4538
barnettarchitecture.com

NEW LOCATION FOR:
BARRIQUES

961 SOUTH PARK ST.
967. SOUTH PARK ST.
MADISON, WI 53715



PRELIMINARY
NOT FOR CONSTRUCTION

DRAWING ISSUE DATES
2-23-2011

3.3

This document contains confidential or proprietary information. Neither this document nor the information contained herein is to be used or disclosed other than as stated or in part, except as authorized.



Barnett Architecture

118 NORTH BREEZE TERRACE
SUITE I
MADISON, WISCONSIN 53726
608.233.4538
barnettarchitecture.com

NEW LOCATION FOR:
BARRIQUES

961 SOUTH PARK ST.
967. SOUTH PARK ST.
MADISON, WI 53715



PRELIMINARY
NOT FOR CONSTRUCTION

DRAWING ISSUE DATES
2-23-2011

3.2

This document contains confidential or proprietary information. Neither this document nor the information contained herein is to be used or disclosed other in whole or in part, except as authorized.

FT-1 CONCRETE SLAB - BY OWNER
4" WELDED WIRE FABRIC REINFORCED
CONCRETE SLAB
VAPOR BARRIER
2" RIGID INSULATION
GRANULAR FILL BASE COURSE
Z STRIP CONTROL JOINTS
2" RIGID INSULATION THERMAL BREAK AT
SLAB-WALL

ROOF TYPES

RT-1 SHED ROOF - EXISTING
RUBBER ROOF MEMBRANE
RIGID INSULATION
SHEATHING
STEEL OPEN-WEB PURLINS
STEEL BOW-STRING TRUSSES
EDGE GUTTERS TO INTERIOR ROOF DRAINS

EXISTING WALL TYPES

WT-E1 EXTERIOR WALL - EXISTING
EXISTING CMU - VERIFY THICKNESS IN FIELD

EXTERIOR WALL TYPES

WT-E1 EXTERIOR WALL OPTION 1
EXISTING CMU - VERIFY THICKNESS IN FIELD
2" RIGID INSULATION TAPED AND CAULKED
2X4 FRAMING LAYED FLAT AT 16" O.C.
5/8" PAPERLESS GWB

INTERIOR WALL TYPES

WT-I1 INTERIOR WALL - PROPOSED
2X4 FRAMING AT 16" O.C.
5/8" GWB EACH FACE

WT-I2 INTERIOR WALL - PROPOSED
2X6 FRAMING AT 16" O.C.
5/8" GWB EACH FACE

WT-I3 INTERIOR WALL - PROPOSED
2X4 FRAMING AT 16" O.C.
5/8" GWB EACH FACE
LOW VOC FG SOUND ATTENUATION INSUL.

WT-I4 INTERIOR WALL - PROPOSED
2X6 FRAMING AT 16" O.C.
5/8" GWB EACH FACE
LOW VOC FG SOUND ATTENUATION INSUL.

WALL AND ROOF TYPE NOTES

1. PROVIDE CEMENT BOARD BEHIND BATH/SHOWER AND SHOWER WALLS IN LIEU OF GWB.
2. PROVIDE SOUND ATTENUATION BATTS IN PROPOSED BEDROOM AND BATHROOM WALLS.
3. COORDINATE TO OFF FLOOR FRAMING ELEVATION WITH PROPOSED FINISH FLOOR FOR LEVEL CONDITIONS.

FINISH FLOOR NOTES

1. SEE SPECIFICATIONS FOR FINISH FLOORING NOTES.

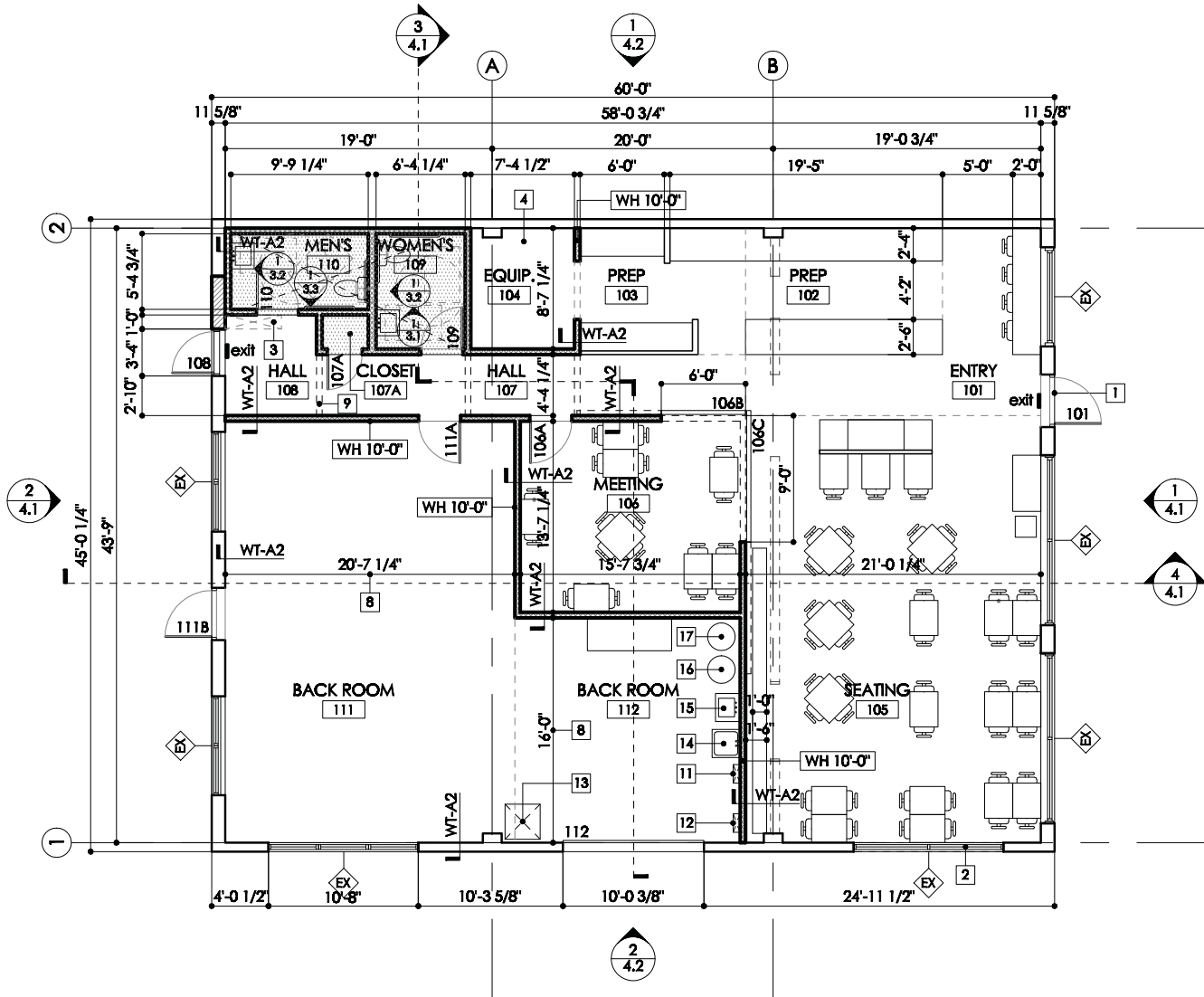
**PRELIMINARY
NOT FOR CONSTRUCTION**



Barnett Architecture
 118 NORTH BREEZE TERRACE
 SUITE 1
 MADISON, WISCONSIN 53726
 608.233.4538
 barnettarchitecture.com

NEW LOCATION FOR:
BARRIQUES

961 SOUTH PARK ST.
 967. SOUTH PARK ST.
 MADISON, WI 53715



PRELIMINARY
 NOT FOR CONSTRUCTION

DRAWING ISSUE DATES
 2-23-2011

1 FIRST FLOOR
 SCALE: 1/8" = 1'-0"

- LEGEND**
- EXISTING WALL TO REMAIN
 - - - EXISTING CONSTRUCTION TO BE REMOVED
 - ▨ PROPOSED FRAME WALL CONSTRUCTION
 - ▩ PROPOSED CMU WALL CONSTRUCTION



3.1

This document contains confidential or proprietary information. Neither this document nor the information contained herein is to be used or disclosed other than as stated or in part, except as authorized.

PLANT SCHEDULE AND LEGEND

Key	Botanical Name	Common Name	Qty	Planting Size	Root Spec	Spacing	Comments
Major Deciduous Trees							
BN	Betula nigra 'Heritage'	Heritage River Birch	2	2-2 1/2" cal	B&B	As shown	multi-stem
AR	Acer rubrum 'Red Sunset'	Red Sunset Maple	1	2-2 1/2" cal	B&B	As shown	Straight leader
Minor Deciduous Trees							
AG	Amelanchier grandiflora 'Autumn Brilliance'	Autumn Brilliance Serviceberry	2	6' HT min	B&B	As shown	Multi-stem, matched full plants
Evergreens							
BM	Buxus microphylla 'Wintergreen'	Wintergreen Boxwood	3	18" HT min	B&B	As shown	Full plants, matched
JS	Juniperus sabina 'Buffalo'	Buffalo Savin Juniper	3	18" HT min	B&B	As shown	Full plants, matched
JM	Juniperus x media 'Saybrook Gold'	Saybrook Gold Juniper	3	3' HT min	B&B	As shown	Full plants, matched
Deciduous Shrubs							
CS	Cornus sericea 'Kelsey'	Kelsey Redtwig Dogwood	3	3" HT min	CONT	As shown	Full, matched plants
VO	Viburnum opulus 'Compactum'	Compact Euro Cranberrybush	4	3" HT min	CONT	As shown	Full, matched plants
Perennials, Grasses and Groundcovers							
hm	heuchera micrantha 'Palace Purple'	Palace Purple Coral Bells	12	1 GAL	CONT	18" o.c.	Vigorous plants
ep	Echinacea purpurea	Purple Coneflower	14	3 Gal	CONT	18" o.c.	Vigorous plants
ms	Miscanthus sinensis 'Gracillimus'	Gracillimus Maiden Grass	6	3 GAL	CONT	As shown	Full, matched plants
pv	Panicum virgatum 'Shenandoah'	Shenandoah Switchgrass	12	1 GAL	CONT	18" o.c.	Full, matched plants



Stone Mulch



Shredded Bark Mulch: all planting areas shall receive bark mulch

961-967 S PARK STREET
PLANT SCHEDULE AND LEGEND
 SHEET:
 DATED: FEBRUARY 21, 2011



Barnett Architecture

18 NORTH BREEZE TERRACE
 SUITE I
 MADISON, WISCONSIN 53726
 608.233.4538
 barnettarchitecture.com

**NEW LOCATION FOR:
 BARRIQUES**

**961 SOUTH PARK ST.
 967 SOUTH PARK ST.
 MADISON, WI 53715**



**LANDSCAPE ARCHITECT:
 RICHARD SLAYTON, ASLA**

**PRELIMINARY
 DT FOR CONSTRUCTION**

**DRAWING ISSUE DATES
 2-23-2011**

2.5

This document contains confidential or proprietary information. Neither this document nor the information contained herein is to be used or disclosed other than as stated or in part, except as authorized.



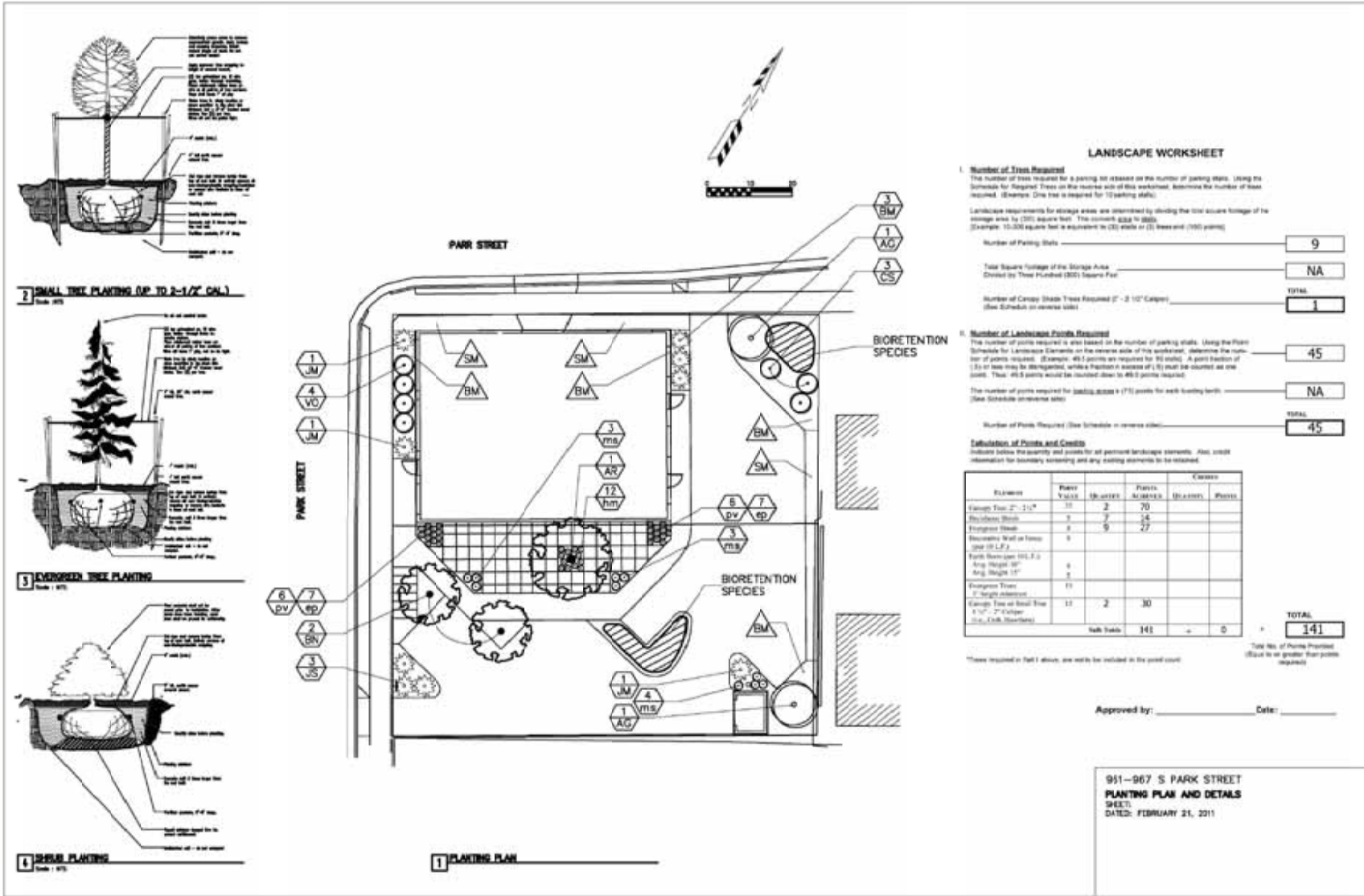
Barnett Architecture
 118 NORTH BREEZE TERRACE
 SUITE 1
 MADISON, WISCONSIN 53726
 608.233.4538
 barnettarchitecture.com

**NEW LOCATION FOR:
 BARRIQUES**

**961 SOUTH PARK ST.
 967. SOUTH PARK ST.
 MADISON, WI 53715**



**LANDSCAPE ARCHITECT:
 RICHARD SLAYTON, ASU**



LANDSCAPE WORKSHEET

I. Number of Trees Required
 The number of trees required for a parking lot is based on the number of parking stalls. Using the Schedule for Required Trees on the reverse side of this worksheet, determine the number of trees required. (Example: One tree is required for 10 parking stalls.)

Landscape requirements for storage areas are determined by dividing the total square footage of the storage area by 1000 square feet. This amount is then rounded up to the next whole number.
 (Example: 10,000 square feet is equivalent to 100 stalls or 10 trees and 1000 points)

Number of Parking Stalls

Total Square Footage of the Storage Area
 Divided by Three Hundred (300) Square Feet

Number of Canopy Shade Trees Required (2" - 10" Caliper)
 (See Schedule on reverse side)

II. Number of Landscape Points Required
 The number of points required is also based on the number of parking stalls. Using the Point Schedule for Landscape Elements on the reverse side of this worksheet, determine the number of points required. (Example: 40.0 points are required for 10 stalls. A point fraction of 1/2 or less may be disregarded, while a fraction in excess of 1/2 must be counted as one point. Thus, 40.5 points would be rounded down to 40.0 points required.)

The number of points required for landscape areas + (7.0) points for each existing tree:
 (See Schedule on reverse side)

Number of Points Required (See Schedule on reverse side)

Calculation of Points and Credits
 Indicate below the quantity and points for all percent landscape elements. Also, credit reductions for bioretention screening and any existing elements to be retained.

Element	Plant Value	Quantity	Points Allowed	Credits	Points
Example Tree 2" - 10"	10	2	20		
Bioretention Basin	5	2	10		
Evergreen Shrub	5	9	45		
Bioretention Wall or Screen (per 10 L.F.)	5				
Existing Trees (per 10 L.F.)	5				
Example Tree at Road Edge 1 1/2" - 2" Caliper (See Table Schedule)	11	2	22		
TOTAL			141		

Total No. of Points Permitted (Round to no greater than points required)

Approved by: _____ Date: _____

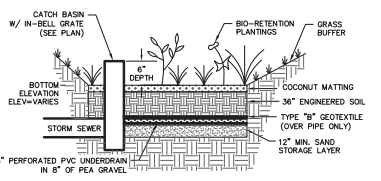
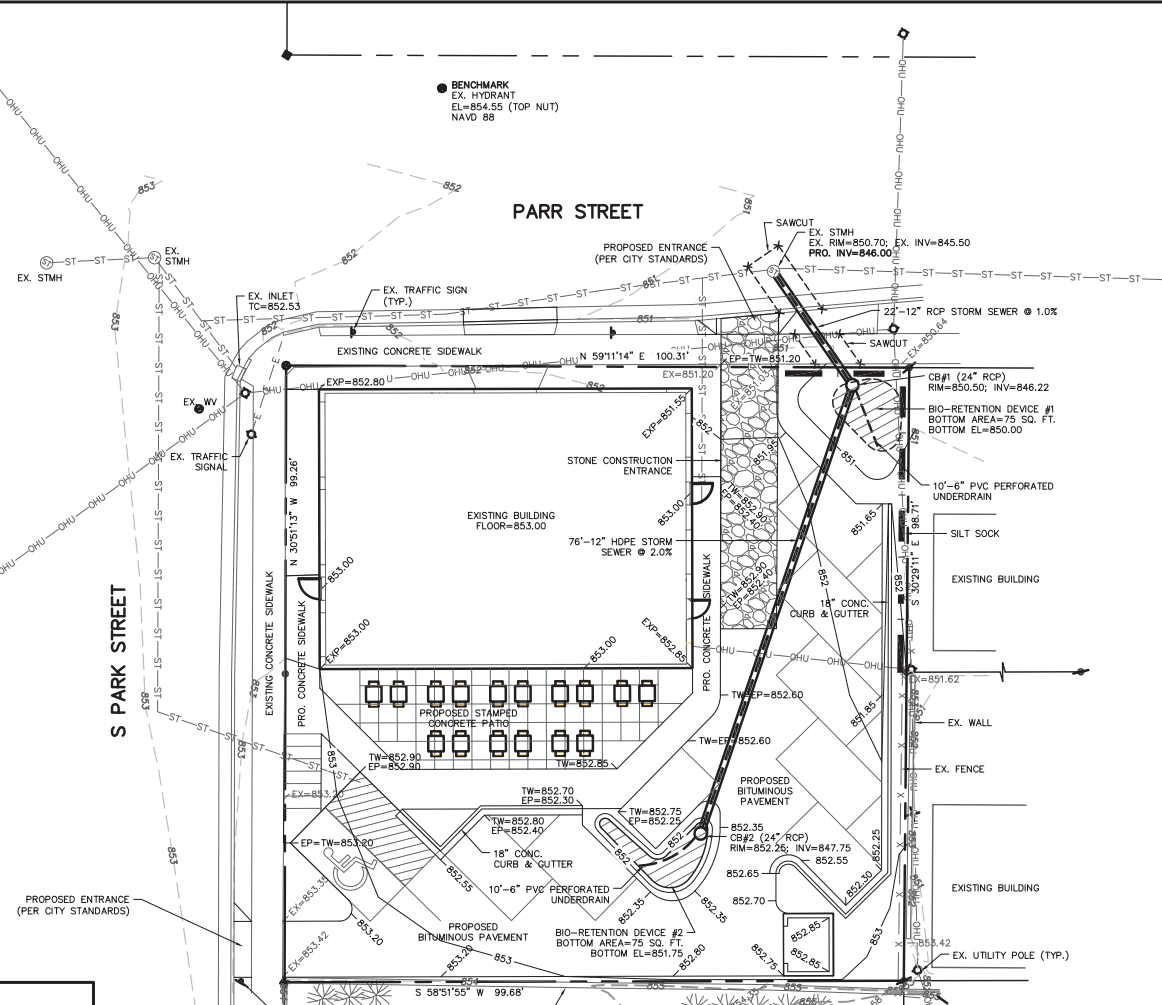
951-967 S PARK STREET
 PLANTING PLAN AND DETAILS
 SHEET
 DATED: FEBRUARY 21, 2011

**PRELIMINARY
 NOT FOR CONSTRUCTION**

**DRAWING ISSUE DATES
 2-23-2011**

2.4

This document contains confidential or proprietary information. Neither this document nor the information contained herein is to be used or disclosed other than as stated or in part, except as authorized.



BIORETENTION DETAIL

ENGINEERED SOIL SHALL CONSIST OF THE FOLLOWING:
 70% SILICA SAND; 30% COMPOST W/ PH 5.3-6.5
 COMPOST SHALL MEET NURS SPECIFICATION STDG.
 STORAGE/INTERFACE LAYER SHALL CONSIST OF SAND AS FOLLOWS:
 SAND: WASHED QUARTZ OR SILICA 0.02 - 0.04 INCHES IN DIA.
 BIORETENTION PLANTINGS TO BE PLANTED AT ONE PLUG PER SQUARE FOOT. PLUGS TO BE PLANT STOCK NAMED IN THE WET PRAIRIE SHORT STATURE MIX FROM AGRECOL CORPORATION OR APPROVED EQUIVALENT. A MINIMUM OF 10 DIFFERENT PLANT STOCK NAMES TO BE PLANTED.
 TO PREVENT COMPACTION OF ENGINEERED SOIL AND SUBSOL'S CONTRACTOR SHALL PROTECT AGAINST MACHINERY ENTERING OR COMPACTING THE BIORETENTION AREA.

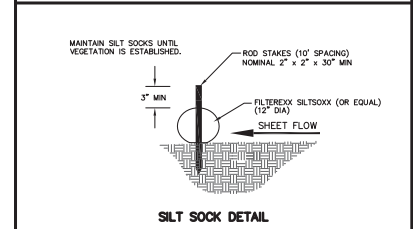
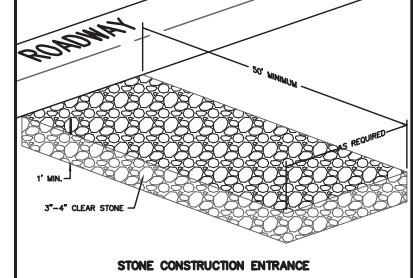
EROSION NOTES:
 THE STONE CONSTRUCTION ENTRANCE SHALL BE INSTALLED PRIOR TO ANY CONSTRUCTION. THE TRAPPING PAD IS TO BE MAINTAINED BY THE CONTRACTOR IN A CONDITION WHICH WILL PREVENT THE TRACK OF MUD OR DRY SEDIMENT ONTO THE ADJACENT PUBLIC STREET. SEDIMENT REACHING THE PUBLIC ROAD SHALL BE REMOVED BY STREET CLEANING (NOT HYDRAULIC FLUSHING) BEFORE THE END OF EACH WORKDAY.
 EROSION CONTROL DEVICES SHALL BE INSTALLED PRIOR TO GRADING OPERATIONS AND SHALL BE PROPERLY MAINTAINED FOR MAXIMUM EFFECTIVENESS UNTIL VEGETATION IS ESTABLISHED. ALL EROSION CONTROL MEASURES AND STRUCTURES SERVING THE SITE MUST BE INSPECTED AT LEAST WEEKLY OR WITHIN 24 HOURS OF A 0.5 INCH RAIN EVENT. ALL MAINTENANCE WILL FOLLOW AN INSPECTION WITHIN 24 HOURS.
 CUT AND FILL SLOPES SHALL BE NO GREATER THAN 3:1.
 EROSION CONTROL IS THE RESPONSIBILITY OF THE CONTRACTOR UNTIL ACCEPTANCE OF THIS PROJECT. EROSION CONTROL MEASURES AS SHOWN SHALL BE THE MINIMUM PRECAUTIONS THAT WILL BE ALLOWED. THE CONTRACTOR SHALL BE RESPONSIBLE FOR REDUCING AND CORRECTING ALL EROSION CONTROL PROBLEMS THAT ARE A RESULT OF CONSTRUCTION ACTIVITIES. ADDITIONAL EROSION CONTROL MEASURES, AS REQUESTED IN WRITING BY THE STATE OR LOCAL INSPECTORS, OR THE DEVELOPER'S ENGINEER, SHALL BE INSTALLED WITHIN 24 HOURS.

TIME SCHEDULE:
 APRIL 18, 2011 INSTALL INITIAL EROSION CONTROL DEVICES.
 APRIL 19 - MAY 31, 2011 CONSTRUCT PATIO, PARKING LOT AND DRIVEWAY AND RESTORE PERVIOUS DISTURBED AREAS.
 JUNE 1 - 10, 2011 CONSTRUCT BIO-RETENTION DEVICES.

RESTORATION NOTES:
 ALL PERVIOUS DISTURBED AREAS SHALL RECEIVE A MINIMUM OF FOUR (4) INCHES OF TOPSOIL, SEED AND MULCH. ALL PERVIOUS DISTURBED AREAS SHALL RECEIVE FERTILIZER EXCEPT NATIVE PLANTING AREAS. RESTORATION WILL OCCUR AS SOON AFTER THE DISTURBANCE AS PRACTICAL. SEED MIXTURE 40 SHALL BE USED ON ALL DISTURBED AREAS. MIXTURES SHALL BE IN ACCORDANCE WITH SECTION 650 OF D.O.T. SPECIFICATIONS. AN EQUAL AMOUNT OF ANNUAL RYEGRASS SHALL BE ADDED TO THE MIX.
 SEED MIXTURES SHALL BE APPLIED AT THE RATE OF FOUR (4) POUNDS PER 1,000 SQUARE FEET. FERTILIZER SHALL BE APPLIED AT THE RATE OF FOUR (4) POUNDS PER 1,000 SQUARE FEET. MULCH SHALL CONSIST OF HAY OR STRAW APPLIED AT THE RATE OF 2 TONS PER ACRE.
 FERTILIZER SHALL MEET THE MINIMUM REQUIREMENTS THAT FOLLOW: NITROGEN, NOT LESS THAN 16%; PHOSPHORIC ACID, NOT LESS THAN 8%; POTASH, NOT LESS THAN 8%.

OWNER: QUAM ENGINEERING, LLC
 ATTN: MATT WEGANDT AND FINN BERGE
 1531 MORRIS STREET
 MADISON, WI 53711

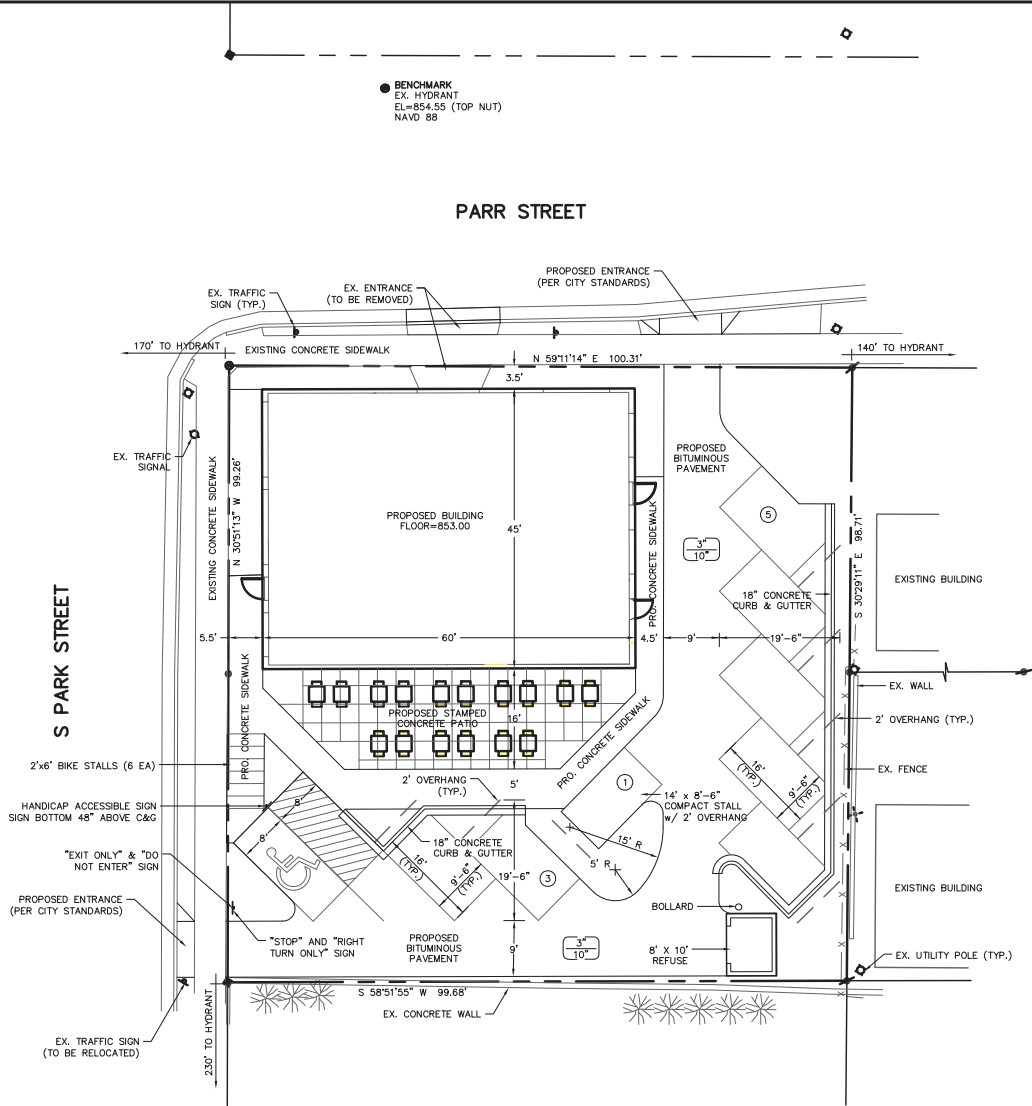
ENGINEER: RYAN QUAM
 4885 LARSON BEACH ROAD
 MCFARLAND, WI 53558



TO OBTAIN LOCATION OF PARTICIPANTS' UNDERGROUND FACILITIES BEFORE YOU DIG IN WISCONSIN
CALL DIGGERS HOTLINE 1-800-242-8511 TOLL FREE
 TDD(FOR THE HEARING IMPAIRED)(800)542-2289
 WIS. STATUTE 182.0175 (1974) REQUIRES MIN. OF 3 WORK DAYS NOTICE BEFORE YOU EXCAVATE.

961-967 S PARK STREET
 GRADING AND EROSION CONTROL PLAN
 SHEET: 2.3
 DATED: FEBRUARY 22, 2011

QUAM ENGINEERING, LLC
 Residential and Commercial Site Design Consultants
 www.quamengineering.com
 4604 Sigelkow Road, Suite A - McFarland, Wisconsin 53558
 Phone (608) 838-7750; Fax (608) 838-7752



PAVING LEGEND

-  3" ASPHALT PAVEMENT OVER 10" AGGREGATE BASE COURSE

PARKING LOT PLAN SITE INFORMATION BLOCK

Site Address <u>961-967 S Pk St</u>	
Site acreage (total) <u>0.3222 ACRES</u>	
Number of building stories (above grade)	<u>1 STORY</u>
Building height	<u>33'</u>
BLUR type of construction (see structures or additions)	<u>VB</u>
Total square footage of building	<u>7,361</u>
Use of property <u>RESTAURANT</u>	
Gross square feet of office	<u>N/A</u>
Gross square feet of retail area	<u>N/A</u>
Number of employees in warehouse	<u>N/A</u>
Number of employees in production	<u>N/A</u>
Capacity of restaurant/price of assembly	<u>180</u>
Number of bicycle stalls shown	<u>8</u>
Number of parking stalls:	
	SHOWN
Small Car	<u>1</u>
Large Car	<u>7</u>
Accessible	<u>1</u>
Total	<u>9</u>
Number of trees shown (See Landscape Plan)	

961-967 S PARK STREET

SITE PLAN

SHEET: 2.2

DATED: FEBRUARY 22, 2011

QUAM ENGINEERING, LLC

Residential and Commercial Site Design Consultants



www.quamengineering.com

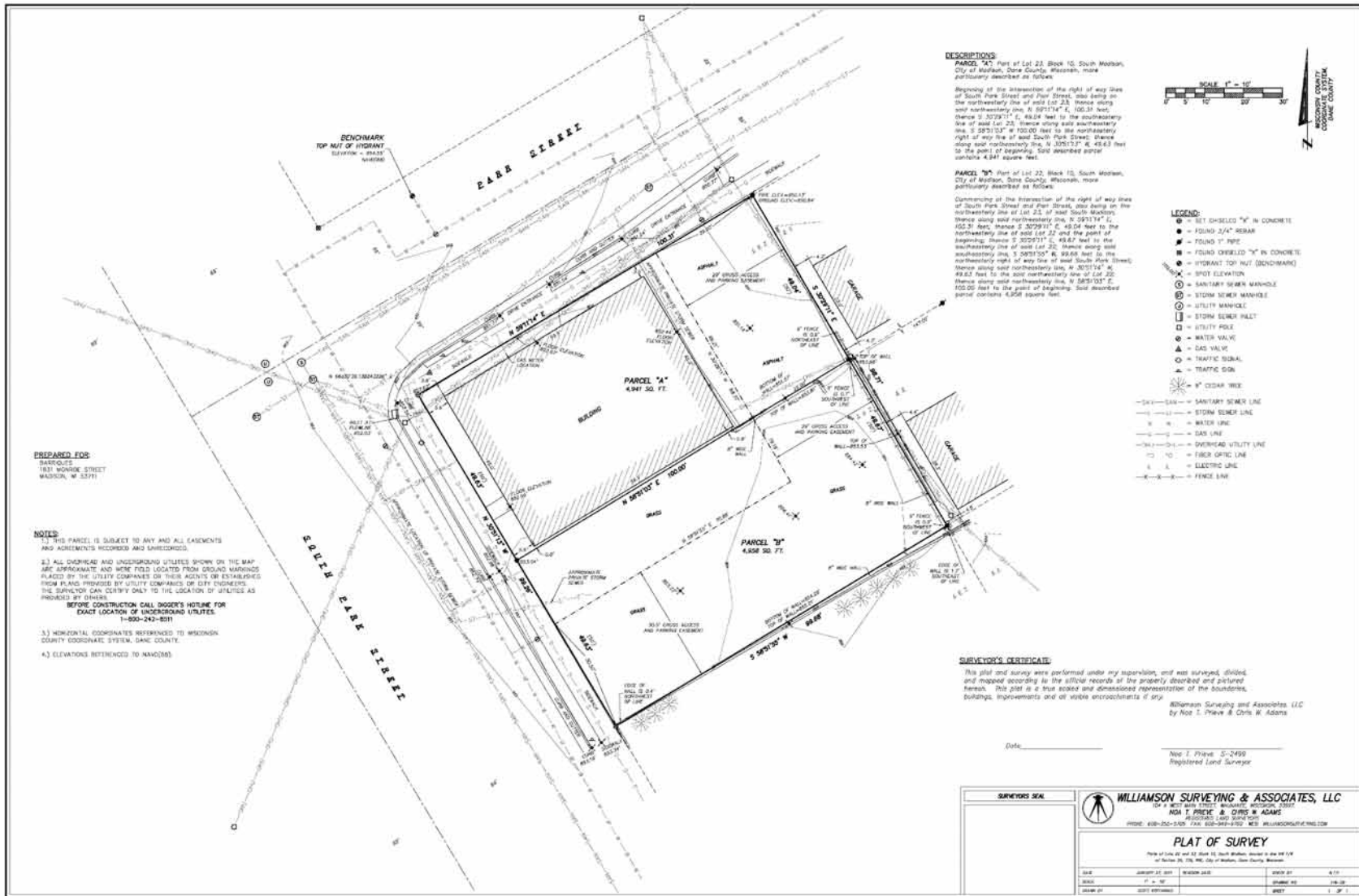
4604 Sigelkow Road, Suite A - McFarland, Wisconsin 53558
Phone (608) 838-7750; Fax (608) 838-7752



Barnett Architecture
 118 NORTH BREEZE TERRACE
 SUITE I
 MADISON, WISCONSIN 53726
 608.233.4536
 barnettarchitecture.com

**NEW LOCATION FOR:
 BARRIQUES**

**961 SOUTH PARK ST.
 967. SOUTH PARK ST.
 MADISON, WI 53715**



1 EXISTING SITE PLAN - NOT TO SCALE
 SCALE: NTS

**PRELIMINARY
 NOT FOR CONSTRUCTION**

**DRAWING ISSUE DATES
 2-23-2011**

2.1

This document contains confidential or proprietary information. Neither this document nor the information contained herein is to be used or disclosed other than as stated or in part, except as authorized.

PROJECT

NEW RETAIL LOCAITON FOR BARRIQUES

961 AND 967 SOUTH PARK STREET MADISON, WI



Barnett Architecture

118 NORTH BREEZE TERRACE
SUITE I
MADISON, WISCONSIN 53726
608.233.4538
barnettarchitecture.com

DRAWING INDEX

DRAWING INDEX
1.1 COVER SHEET

- 2.1 EXISTING SURVEY/SITE PLAN
- 2.2 PROPOSED SITE PLAN
- 2.3 GRADING/EROSION CONTROL PLAN
- 2.4 LANDSCAPE PLAN AND DETAILS
- 2.5 LANDSCAPE SCHEDULE

- 3.1 FIRST FLOOR PLAN
- 3.2 WALL TYPES
- 3.3 SCHEDULES AND NOTES
- 3.4 INTERIOR ELEVATIONS-REFUSE ELEVATION

- 4.1 ELEVATIONS AND SECTIONS
- 4.2 ELEVATIONS
- 4.3 EXISTING ELEVATIONS
- 4.4 EXISTING ELEVATIONS

S.1 STRUCTURAL INFORMATION

P. 1 CONTEXT PHOTOGRAPHS
P. 2 CONTEXT PHOTOGRAPHS

PROJECT TEAM

ARCHITECT
BARNETT ARCHITECTURE LLC
118 N. BREEZE TERRACE, SUITE I
MADISON, WI 53726
P. 608-233-4538
CONTACT: TODD BARNETT, ARCHITECT
email: todd@barnettarchitecture.com

CIVIL ENGINEER
QUAM ENGINEERING
SIGGLEKOW ROAD SUITE A
MCFARLAND, WI 53558
P. 608-838-7750
F. 608-838-7752
CONTACT: RYAN QUAM, PE
email: ryan@quamengineering.com

LANDSCAPE ARCHITECT
RICHARD SLAYTON, ASLA
MADISON, WI
email: rslayton@hotmail.com

STRUCTURAL ENGINEER
GUNNAR MALM AND ASSOCIATES
6402 ODANA ROAD
MADISON, WI 53719
P. 608-288-1108
F. 608-288-1109
CONTACT: GUNNAR MALM, PE
email: mail@GMAengineers.com

SURVEYOR
WILLIAMSON SURVEYING
104 A WEST MAIN STREET
WAUNAKEE, WI 53597
P. 608-255-5705
F. 608-849-9760
CONTACT: NOA PRIEVE
email: sai@RR.WI.com
email: noa@williamsonsurveying.com

CODE REFERENCES

MUNICIPALITY CITY OF MEQUON
BUILDING CODE WISCONSIN COMMERCIAL BUILDING CODE
ZONING CODE CITY OF MADISON GENERAL ORDINANCE CHAPTER 28

BUILDING DATA

1 NUMBER OF STORIES/LEVELS

AREAS - gross square footage: informational only

LEVEL	Existing SF	Proposed SF
First	2696	2696

PROPERTY INFORMATION

PLATE OF SURVEY
Parts of Lots 22 and 23, Block 10, South Madison, Located in the NW 1/4 of Section 26, T17N, R9E, City of Madison, Dane County, Wisconsin.

ZONING CODE INFORMATION

C2	ZONING CLASSIFICATION - both properties
YES	PERMITTED USE
4941SF	PARCEL A: 961 S. PARK STREET
4958 SF	PARCEL B: 967 S. PARK STREET
	BUILDING HEIGHT LIMIT
	FRONT YARD SETBACK
	SIDE YARD SETBACK
	REAR YARD SETBACK
	URBAN DESIGN COMMISSION APPROVAL DATE

STRUCTURAL INFORMATION - SEE "S" SHEETS

2000 SOIL BEARING PRESSURE PSF, ASSUMED

ALTERNATE BID INFORMATION

ALTERNATE BID NO. 1: PROVIDE

UNIT COST INFORMATION

UNIT COST NO. 1:



1 AREA LOCATION PLAN

SCALE: NONE



PRELIMINARY
NOT FOR CONSTRUCTION

DRAWING ISSUE DATES
2-23-2011

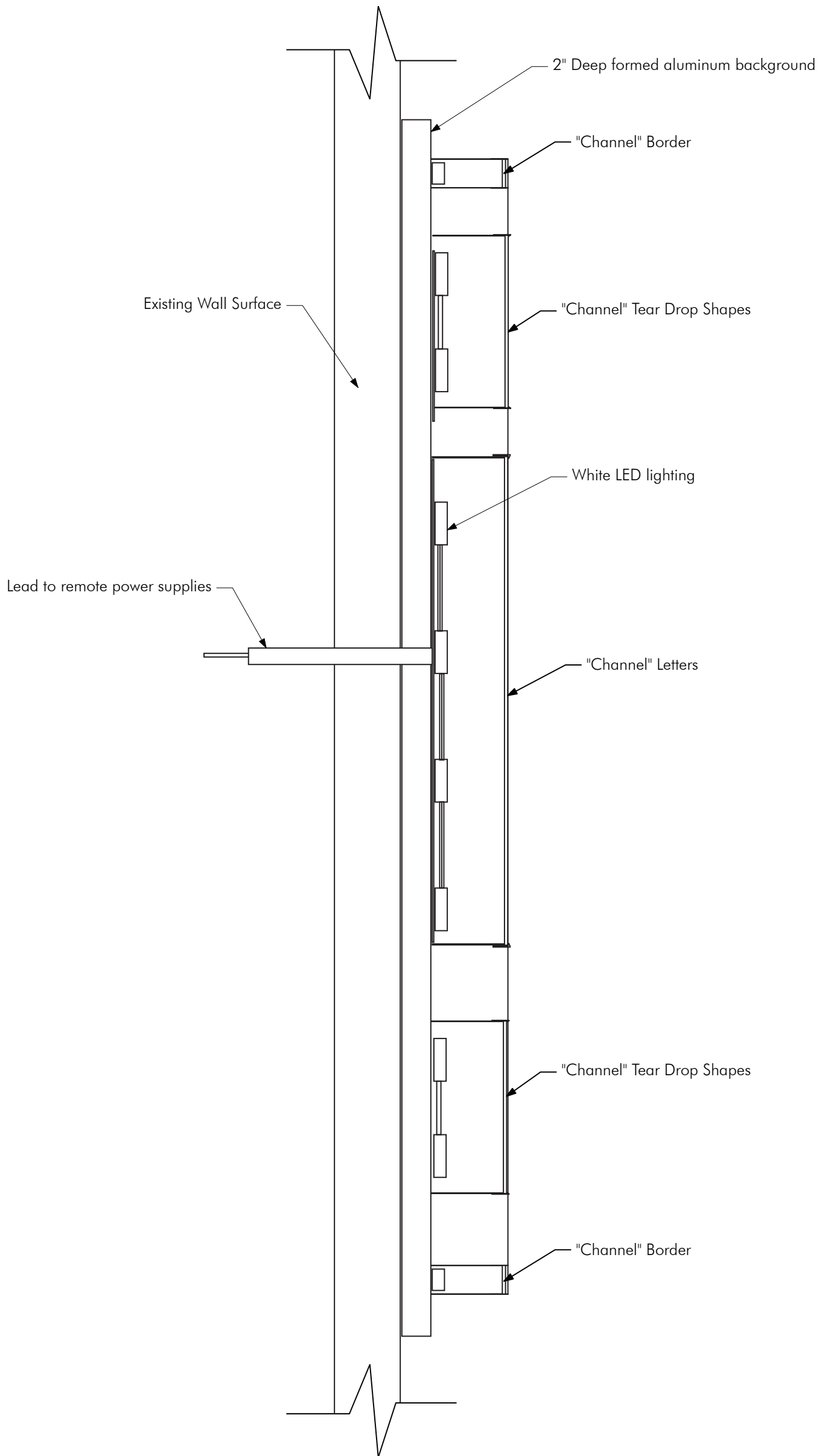
1.1

This document contains confidential or proprietary information. Neither this document nor the information contained herein is to be used or disclosed other than as stated or in part, except as authorized.

**PRELIMINARY
NOT FOR CONSTRUCTION**

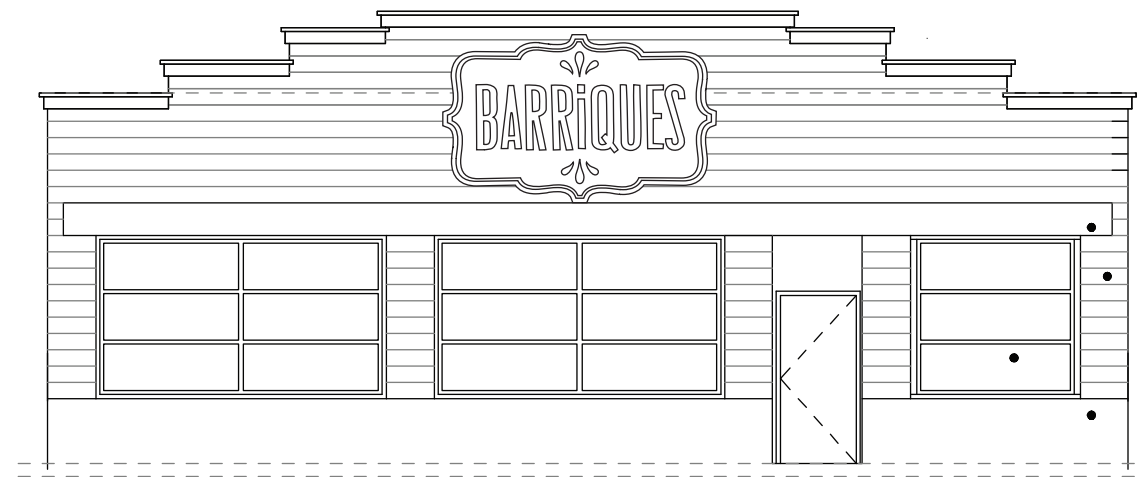


SIGN SECTION: WS - 1 - BARRIQUES



Scale: 1 1/2"=1'





1 WEST ELEVATION - exist.
SCALE: 1/8" = 1'-0"

KEY NOTES:

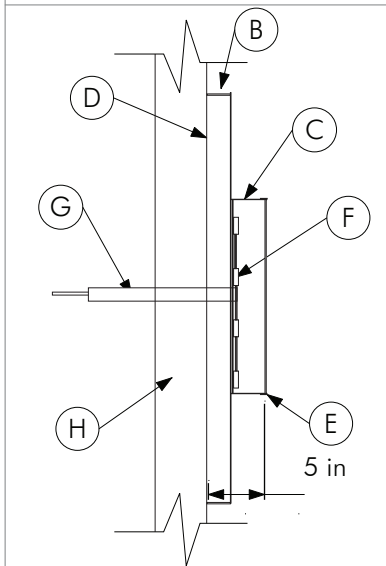
- A- 5" deep formed aluminum channel letters
- B- 2" deep backer panel made from 1/8" thick aluminum face with .090 alum returns, also houses electrical connections
- C- .063 Welded Aluminum Returns
- D- .080 Aluminum Backer Plate
- E- 1" Trim Cap
- F- Internal LED illumination (white)
- G- Secondary Lead to Remote Power Supply
- H- Wall Section
- I- Nighttime Illumination Rendering

FINISHES:

- Matthews Satin Urethane-Black (panel, returns/trim cap)
- 7328 White acrylic
- Oracal Translucent Vinyl-Jungle Green

CALCULATIONS:

- Signable Area:**
7' 6" x 27' 6" = 206 sq.ft.
45' lineal building frontage
- Sign Dimensions:**
7' 0" x 11' 4" = 79.33sq.ft.



126 S. FIRST ST. MT HOREB, WI 535372 P-608.437.2320
WWW.SIGNARTMADISON.COM

CUSTOMER APPROVAL:

By signing this approval you are hereby authorizing Sign Art Studio LLC to proceed with the work as described. Any deviation from these specifications will become the customer's financial responsibility.

© The above artwork and or conceptual design, less customer provided artwork or plans, is property of Sign Art Studio and may not be reproduced without written consent .

DATE:

LANDLORD APPROVAL:

DATE:

SCALE: 1/2" - 1'

S H E E T

WS-1

SIGNAGE ELEVATIONS: WS - 1

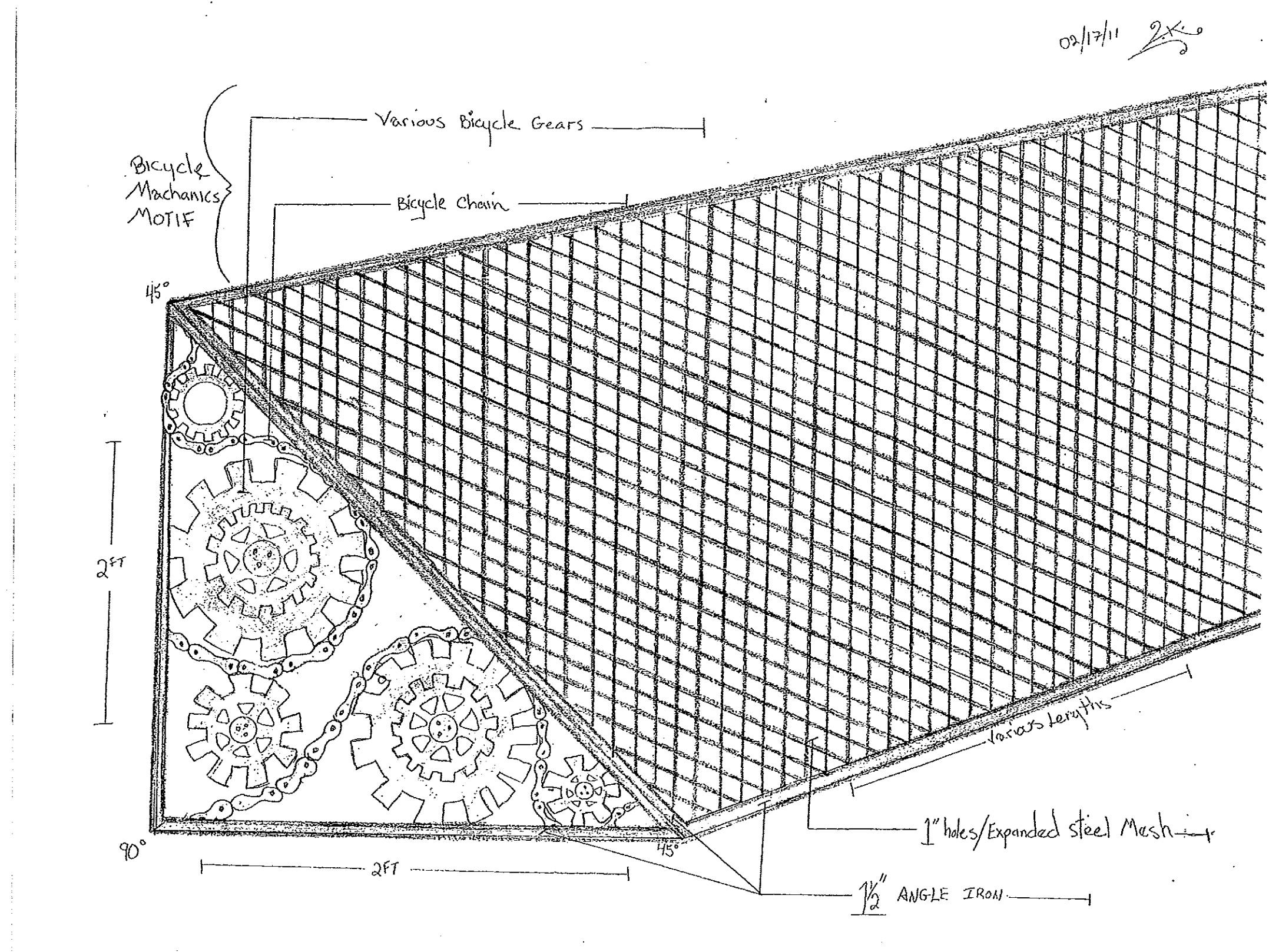


Barnett Architecture

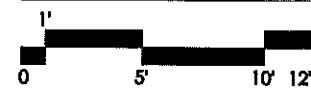
118 NORTH BREESE TERRACE
SUITE 1
MADISON, WISCONSIN 53726
608.233.4538
barnettarchitecture.com

NEW LOCATION FOR:
BARRIQUES

961 SOUTH PARK ST.
967. SOUTH PARK ST.
MADISON, WI 53715



AWNING CONCEPT



**PRELIMINARY
NOT FOR CONSTRUCTION**

DRAWING ISSUE DATES
3-9-2011

A.1

This document contains confidential or proprietary information. Neither this document nor the information contained herein is to be used or disclosed either in whole or in part, except as authorized.