

Madison, Wisconsin

CITY OF MADISON

CITY ENGINEERING DIVISION
DEPARTMENT OF PUBLIC WORKS
PLAN OF PROPOSED IMPROVEMENT

PUBLIC IMPROVEMENT PROJECT
APPROVED

BY THE COMMON COUNCIL
OF MADISON, WISCONSIN

PUBLIC IMPROVEMENT DESIGN
APPROVED BY:

City Engineer

Date

PROJECT
DESIGNED BY:

INDEX OF SHEETS

SHEET NO.	TITLE
1	PLAN
2	CHANNEL DETAILS
3	RAMP AND WEIR DETAILS
4	EROSION CONTROL
5	STORM SCHEDULE

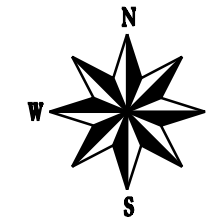
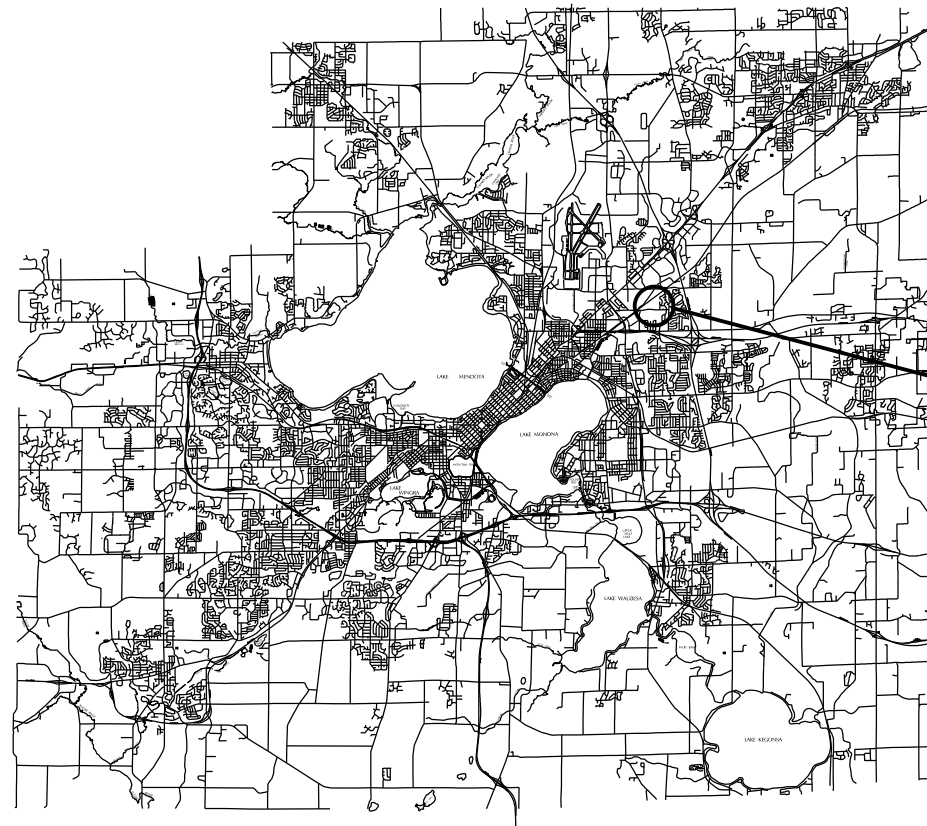
WILLOW CREEK STORMWATER TREATMENT

CITY PROJECT NO. 53W1734

CONVENTIONAL SIGNS

FIELD VERIFY ALL UTILITY LOCATIONS

GAS	G
STORM SEWER	ST
SANITARY SEWER	SAN
WATER	W
OVERHEAD ELECTRIC	OH
POWER POLE	
HANDICAP RAMP	
COMBUSTIBLE FLUIDS	



PROJECT
LOCATION

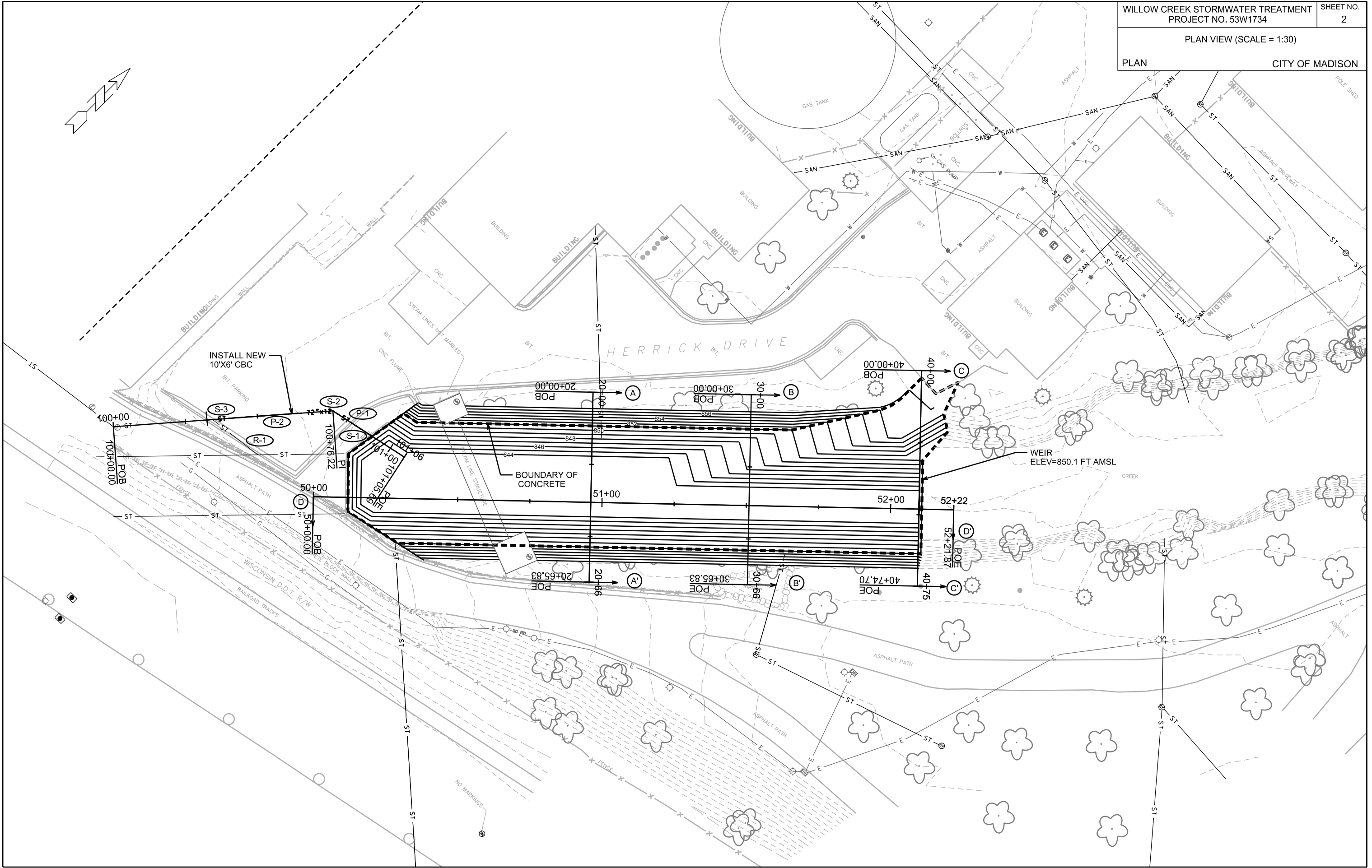
PLANNED EARTHWORK QUANTITIES
EXCAVATION CUT (MEASURED PLAN QUANTITY).....700 CY

PLOT SCALE:

PLOT NAME:

REV. DATE:

ORIGINATOR: CITY OF MADISON - STREETS DIVISION



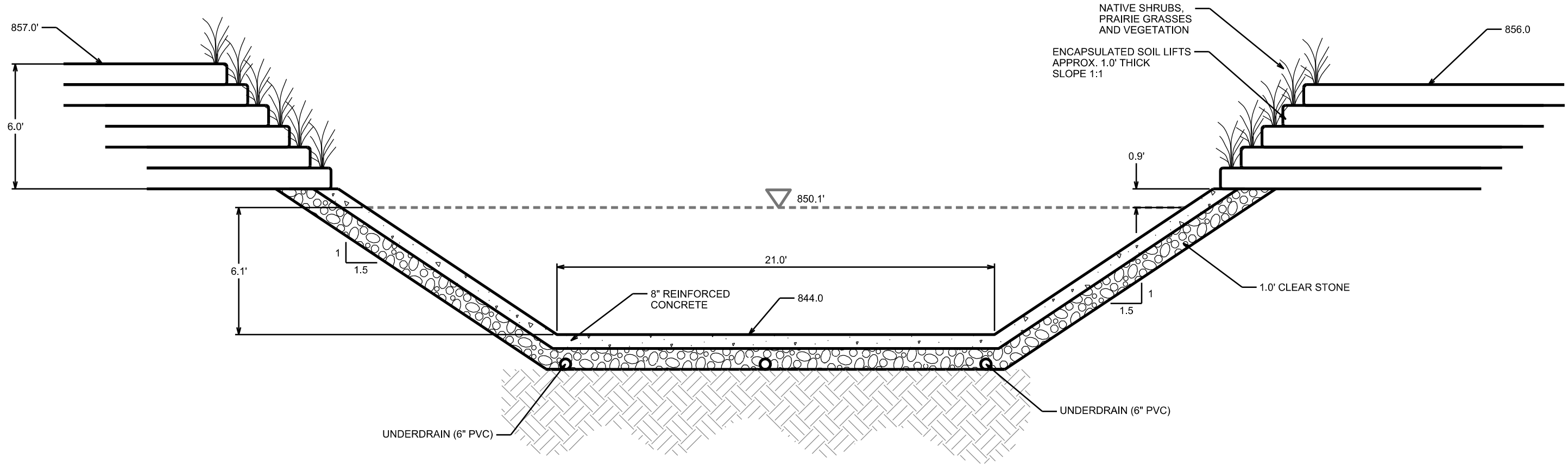
PLOT SCALE: _____

PLOT NAME: _____

REV. DATE: _____

ORIGINATOR: CITY OF MADISON, STREETS DIVISION

SECTION A-A'



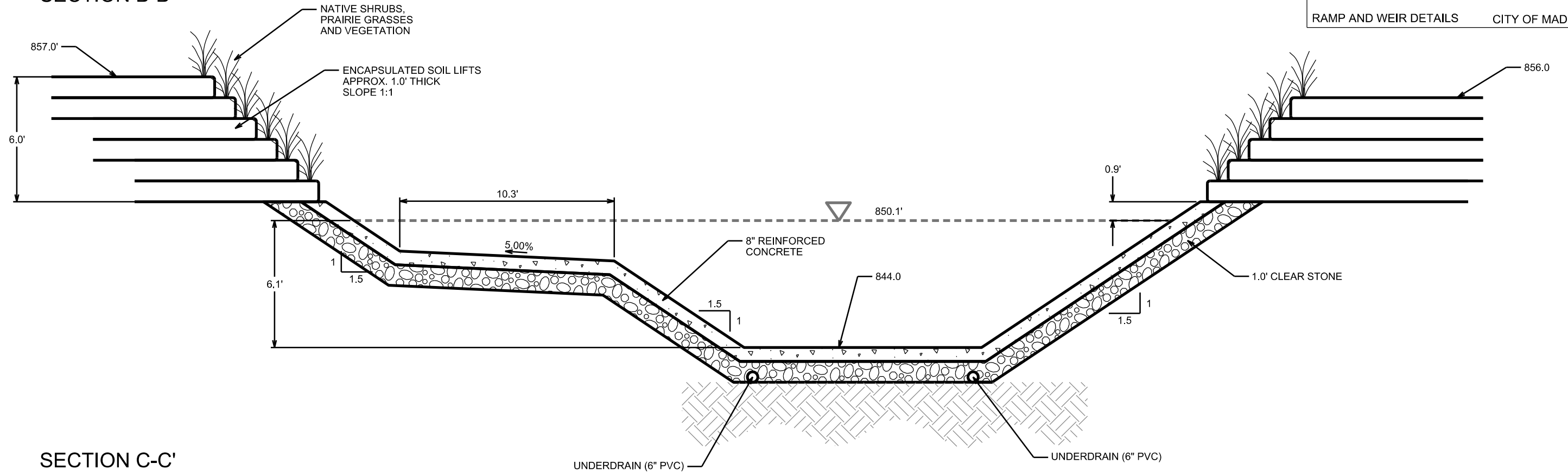
PLOT SCALE: _____

PLOT NAME: _____

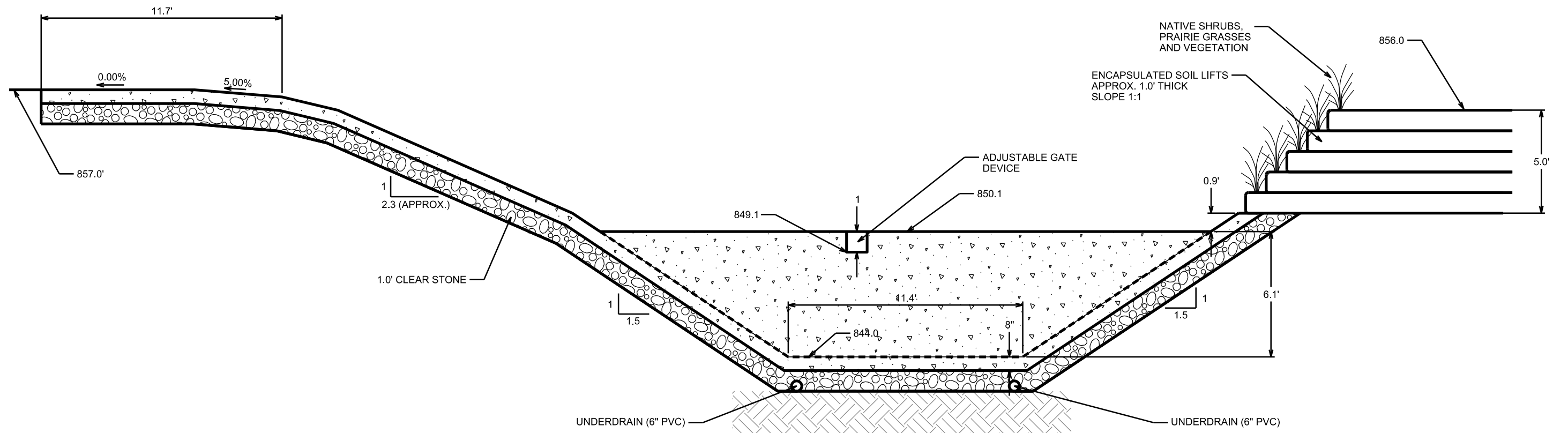
REV. DATE: _____

ORIGINATOR: CITY OF MADISON, STREETS DIVISION

SECTION B-B'



SECTION C-C'

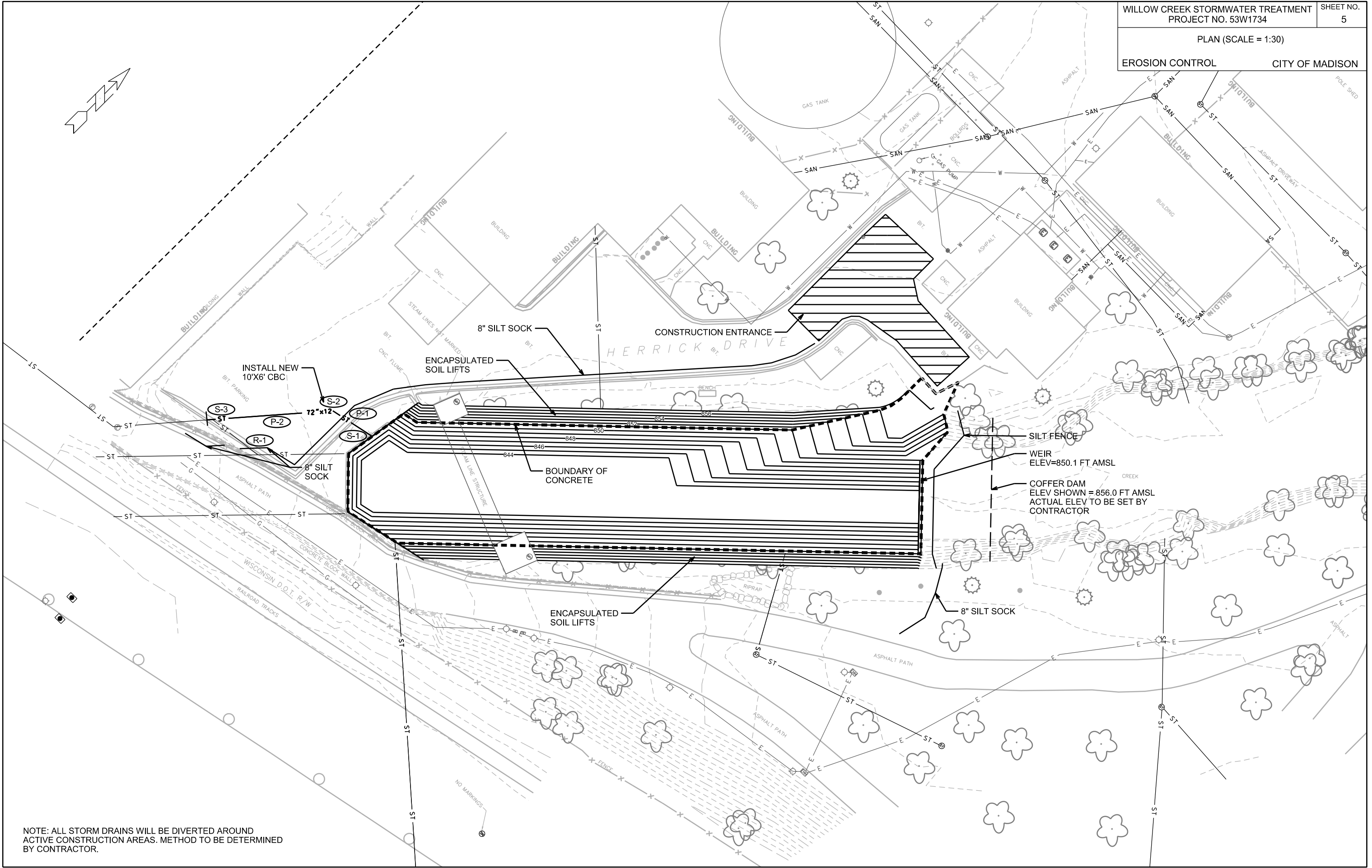


PLOT SCALE: _____

PLOT NAME: _____

REV. DATE: _____

ORIGINATOR: CITY OF MADISON, STREETS DIVISION



NOTE: ALL STORM DRAINS WILL BE DIVERTED AROUND ACTIVE CONSTRUCTION AREAS. METHOD TO BE DETERMINED BY CONTRACTOR.

PLOT SCALE: _____

PLOT NAME: _____

REV. DATE: _____

ORIGINATOR: CITY OF MADISON, STREETS DIVISION

STORM SEWER SCHEDULE

PROPOSED STORM STRUCTURES

STRUC NO.	STATION	LOCATION TYPE (OFFSET)	TYPE	TOP OF CASTING	E.I.	DEPTH	NOTES
S-1	100+92.51	RT-0.00	SQUARE-CUT HEADWALL	857.52	846.85	10.67	
S-2	100+76.22	RT-0.00	CONCRETE COLLAR	857.70	846.88	10.82	PER S.D.D. 5.4.5; SEE SPEC. NOTE 1
S-3	100+32.49	LT-0.05	CONCRETE COLLAR	858.64	846.97	11.67	PER S.D.D. 5.4.5; SEE SPEC. NOTE 1

PROPOSED STORM PIPES

PIPE NO.	FROM SAS (DWNSTRM)	TO SAS (UPSTREAM)	EI # (DWNSTRM)	EI # (UPSTRM)	PIPE LENGTH (FT)	PLAN LENGTH (FT)	SLOPE (%)	SIZE (DIA)	TYPE	NOTES
P-1	S-1	S-2	846.85	846.88	16	16	0.18%	10'X6'	CONCRETE BOX CULVERT	
P-2	S-2	S-3	846.88	846.97	44	44	0.21%	10'X6'	CONCRETE BOX CULVERT	

STORM PIPE REMOVAL

PIPE REMOVAL NO.	REMOVE FROM	REMOVE TO	LENGTH (FT)	PAID (Y/N)	SIZE	TYPE	NOTES
R-1	S-3	STA 100+49.19	RT-13.32 22	N	10'X6'	CONCRETE BOX CULVERT	

NOTE: PLAN LENGTH (PAY LENGTH) IS FROM CENTER OF STRUCTURE TO CENTER OF STRUCTURE. PIPE LENGTH IS ACTUAL LENGTH OF PIPE FROM STRUCTURE WALL TO STRUCTURE WALL. SLOPE CALCULATED USING PIPE LENGTH.

SPECIAL NOTES:

1) PLACE SEWER ELECTRONIC MARKER ABOVE STORM SEWER TAP AND BEND LOCATIONS

STANDARD NOTES:

- ABBREVIATIONS: AE = APRON ENDWALL; RCP = REINFORCED CONCRETE PIPE; HERCP = HORIZONTAL ELLIPTICAL REINFORCED CONCRETE PIPE; DNA = DOES NOT APPLY; SAS = SEWER ACCESS STRUCTURE; LP = LOW POINT INLET STRUCTURE; FP = FIELD POURED STRUCTURE; TR = TOP OF CONCRETE ROOF; NCM = NO CROWN MATCH FOR PIPES; UD = UNDERDRAIN
- APPROXIMATE DISCHARGE E.I. GIVEN, ADJUST E.I. AND PIPE SLOPE IN THE FIELD.
- TOP OF CASTING GRADE GIVEN IS THE TOP OF CURB FOR INLET STRUCTURES AND THE FLOWLINE OF THE CLOSED CASTING FOR SAS's.
- TOP OF CONCRETE ROOF (TR) IS 1.25' BELOW TOP OF CASTING UNLESS OTHERWISE NOTED.
- ALL REINFORCED CONCRETE PIPES TO BE CLASS III UNLESS OTHERWISE NOTED.
- SURVEYOR TO CONFIRM THAT ALL INLET STATION / OFFSETS LINE UP WITH PROPOSED CURB AND GUTTER.
- ALL STRUCTURES CALLED OUT AS FIELD POURED SHALL BE FIELD POURED. ALL OTHER STRUCTURES (NOT INDICATED AS FIELD POURED) SHALL BE SUBMITTED TO CITY ENGINEERING FOR APPROVAL IF PRECAST STRUCTURES ARE PREFERRED. CONTACT LAUREN STRIEGL OF CITY ENGINEERING AT (608) 266-4094, LSTRIEGL@CITYOFMADISON.COM, FOR PRECAST APPROVALS, OR FAX SHOP DRAWINGS TO (608) 264-9275.