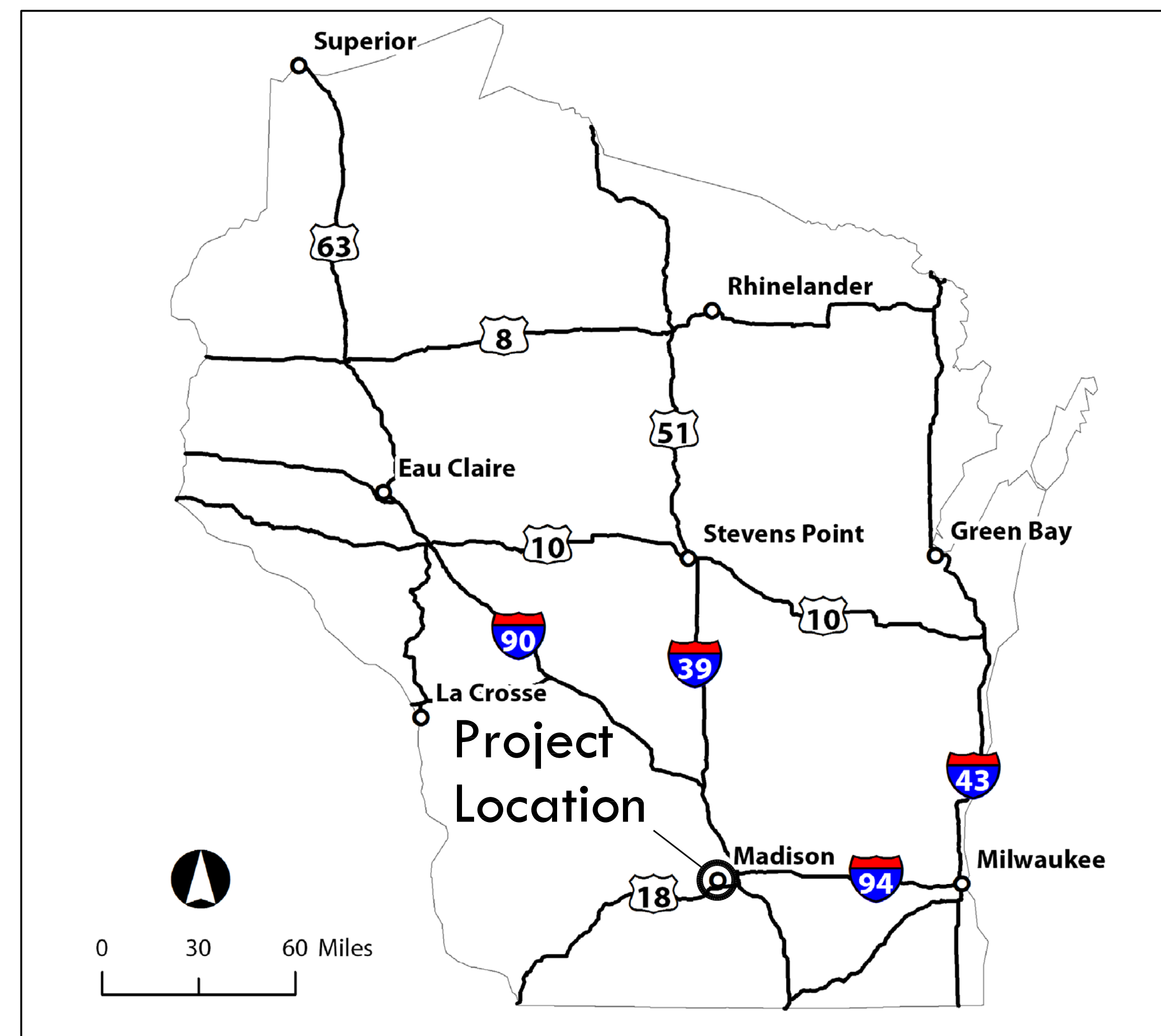


# GRAY TV - WMTV

615 FORWARD DRIVE  
MADISON, WISCONSIN

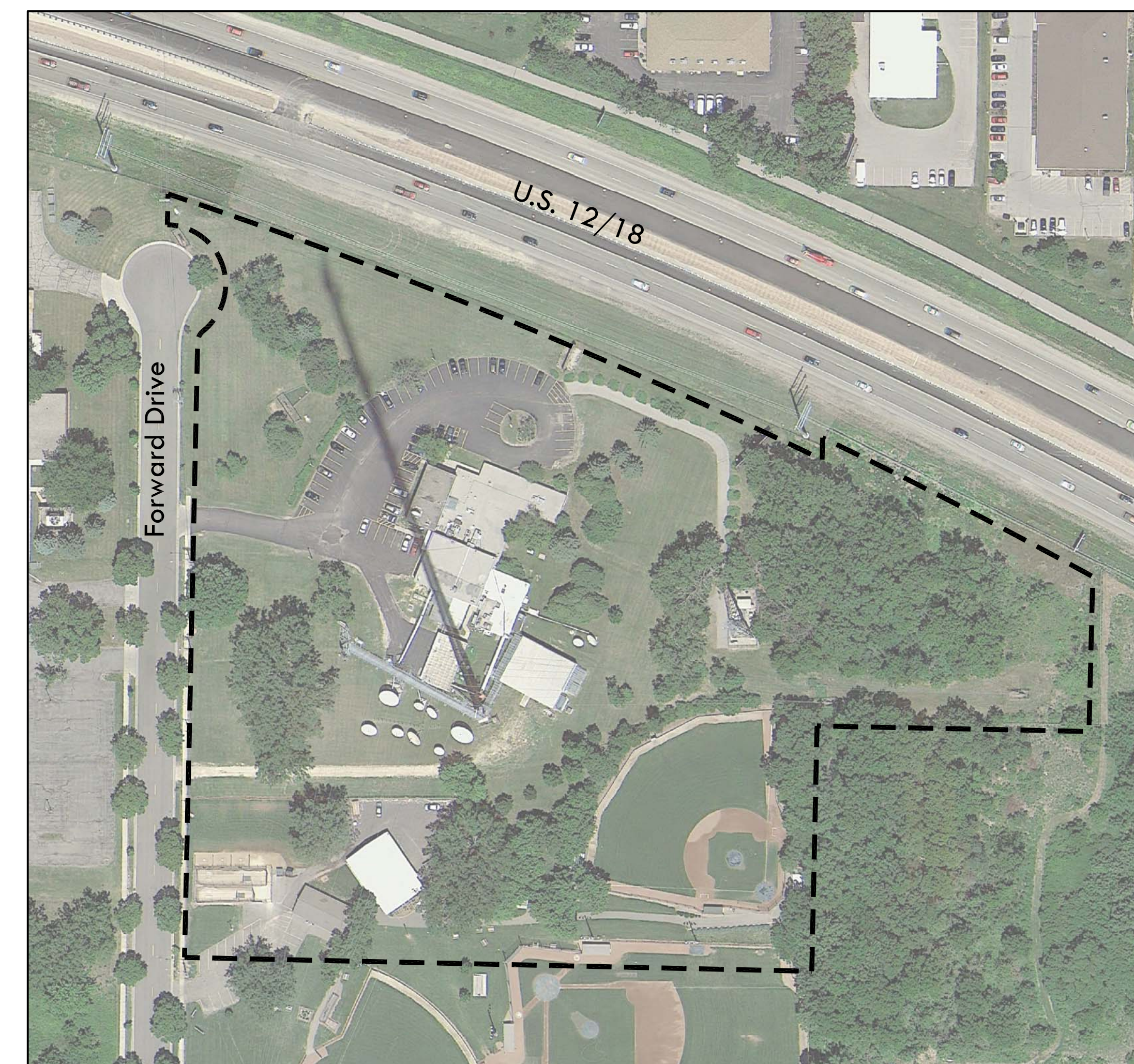
## INDEX TO DRAWINGS

T100	TITLE SHEET
C100	EXISTING CONDITIONS
C101	STAGING PLAN
C102	LAYOUT PLAN
C103	GRADING PLAN
C104	LANDSCAPE PLAN
C105	FIRE ACCESS PLAN
A2.01	1ST FLOOR PLAN
A2.01B	MEZZANINE FLOOR PLAN
A3.01	BUILDING ELEVATIONS
A3.02	BUILDING PERSPECTIVES



LOCATION MAP

1" = 30 Miles



SITE AERIAL

1" = 100 Feet



VICINITY MAP

1" = 0.25 Miles

ISSUES AND REVISIONS:		
No.	UDC SUBMITTAL Description	8/19/2015 Date

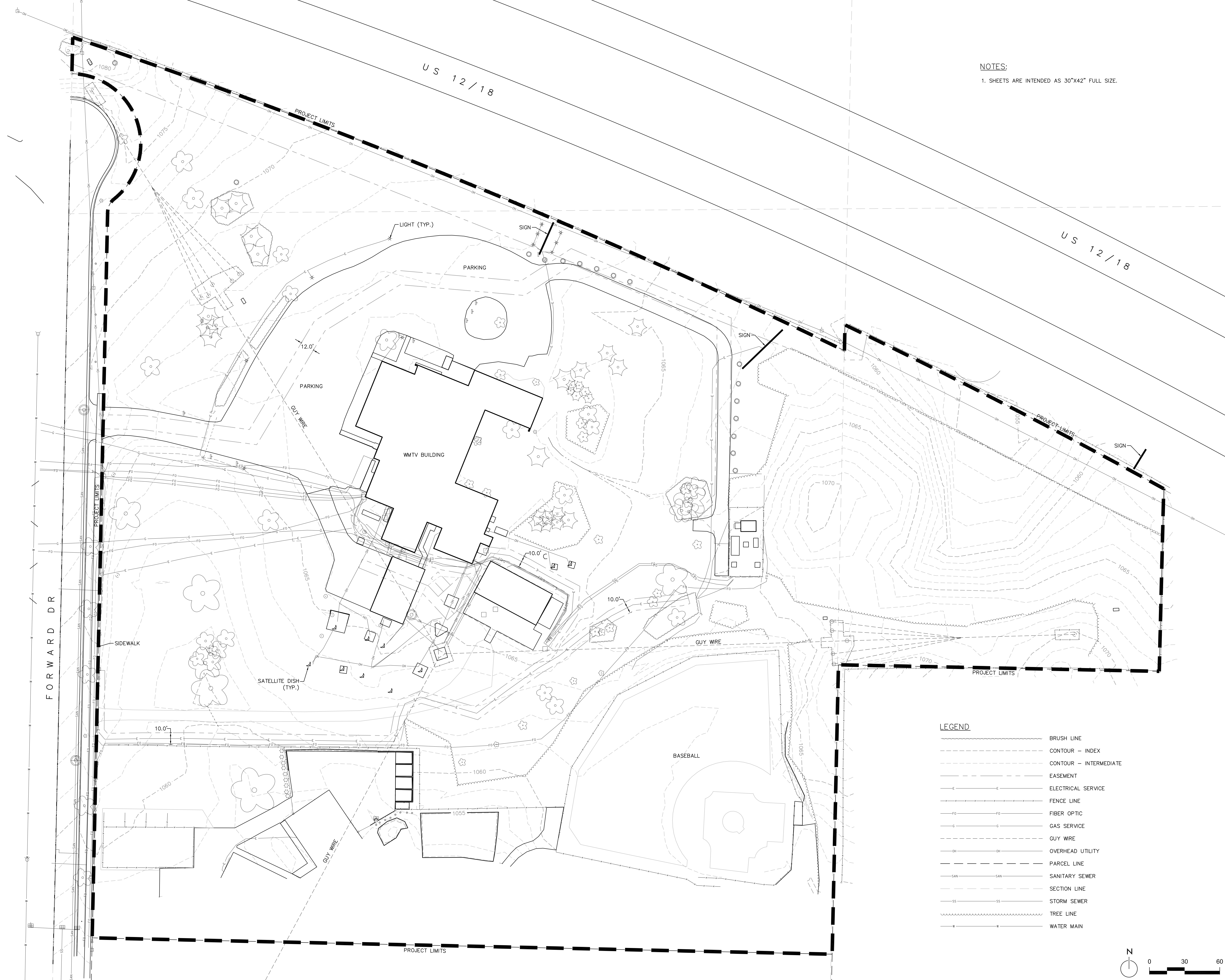
GRAY TV - WMTV  
615 FORWARD DRIVE  
MADISON, WI



TITLE SHEET

PROJECT: 15-0090  
DRAWN BY: Author  
T100

NOTES:  
 1. SHEETS ARE INTENDED AS 30"x42" FULL SIZE.



**LEGEND**

	BRUSH LINE
	CONTOUR - INDEX
	CONTOUR - INTERMEDIATE
	EASEMENT
	ELECTRICAL SERVICE
	FENCE LINE
	FIBER OPTIC
	GAS SERVICE
	GUY WIRE
	OVERHEAD UTILITY
	PARCEL LINE
	SANITARY SEWER
	SECTION LINE
	STORM SEWER
	TREE LINE
	WATER MAIN

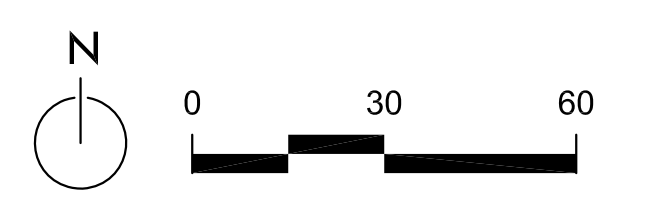
ISSUES AND REVISIONS:

No.	UDC SUBMITTAL Description	8/19/2015 Date

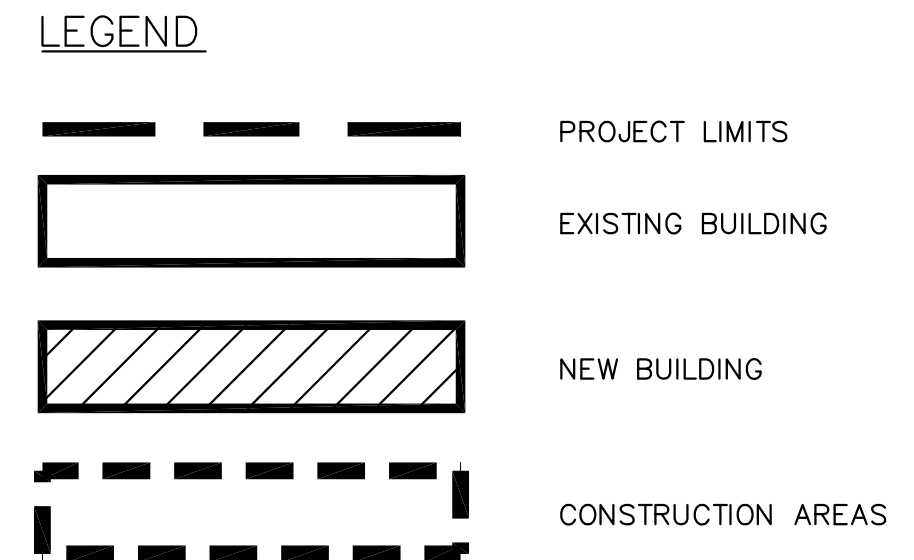
**GRAY TV - WMTV**  
 615 FORWARD DRIVE  
 MADISON, WI



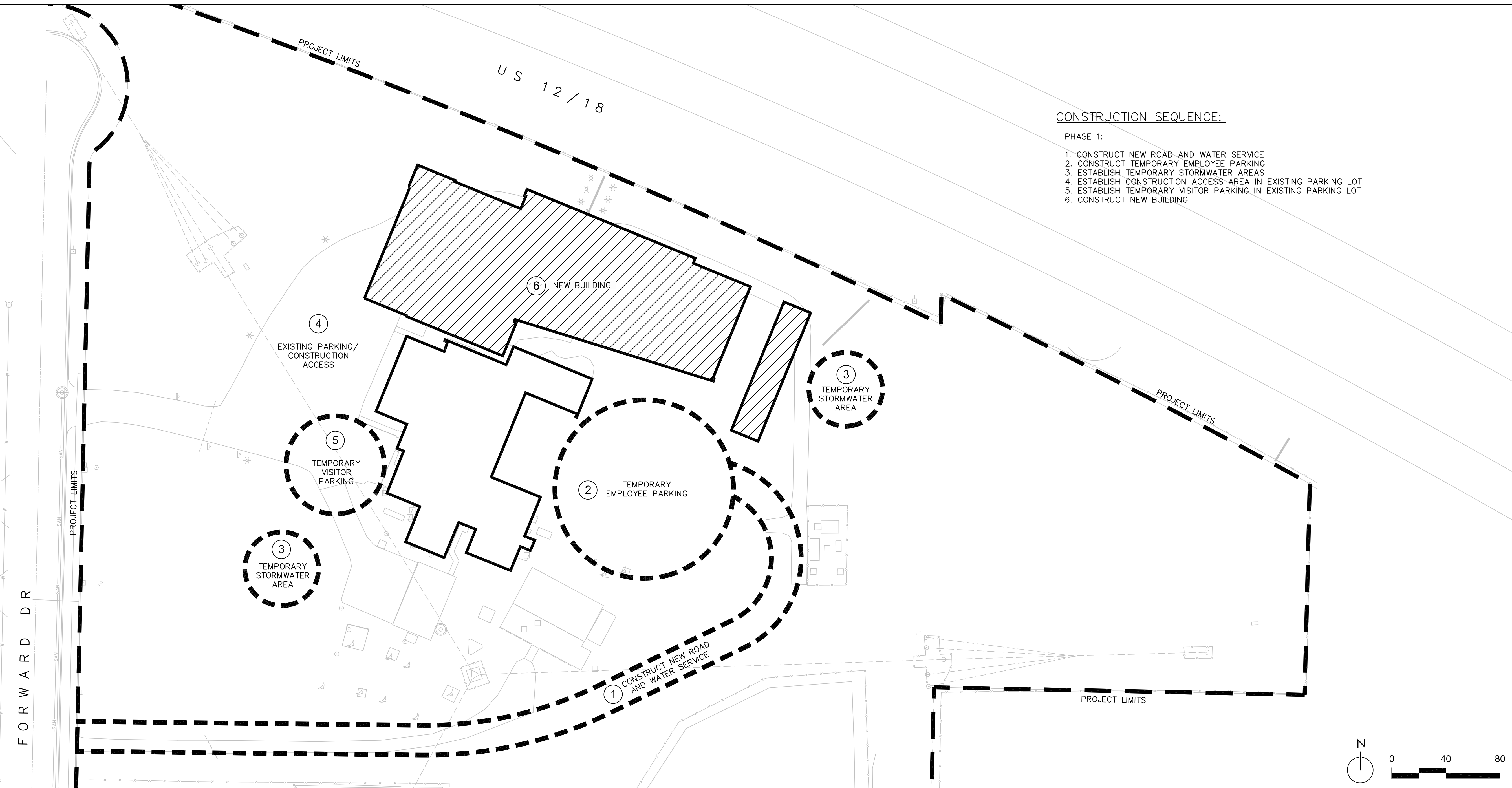
**EXISTING CONDITIONS**



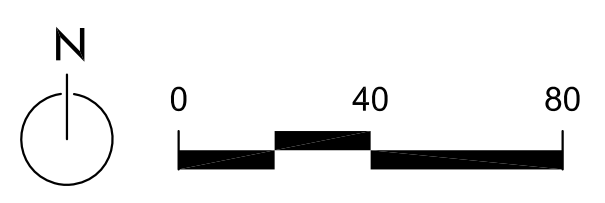
# PHASE 1



**NOTES:**  
1. SHEETS ARE INTENDED AS 30"x42" FULL SIZE.

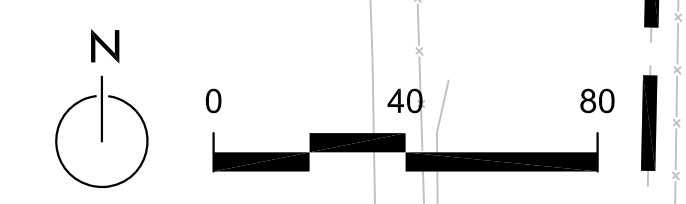
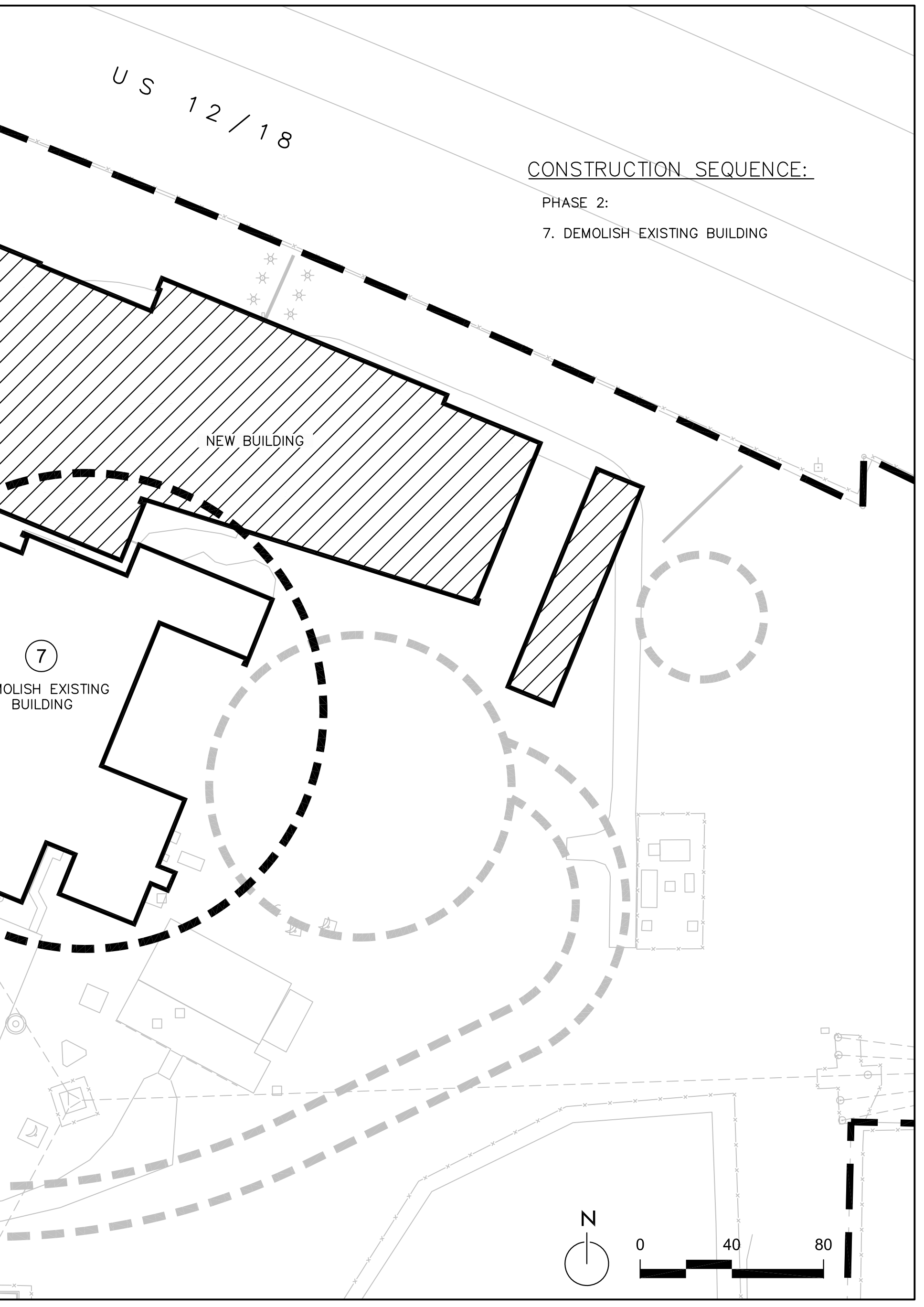


**CONSTRUCTION SEQUENCE:**  
PHASE 1:  
1. CONSTRUCT NEW ROAD AND WATER SERVICE  
2. CONSTRUCT TEMPORARY EMPLOYEE PARKING  
3. ESTABLISH TEMPORARY STORMWATER AREAS  
4. ESTABLISH CONSTRUCTION ACCESS AREA IN EXISTING PARKING LOT  
5. ESTABLISH TEMPORARY VISITOR PARKING IN EXISTING PARKING LOT  
6. CONSTRUCT NEW BUILDING



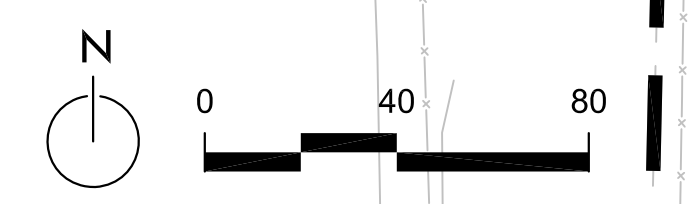
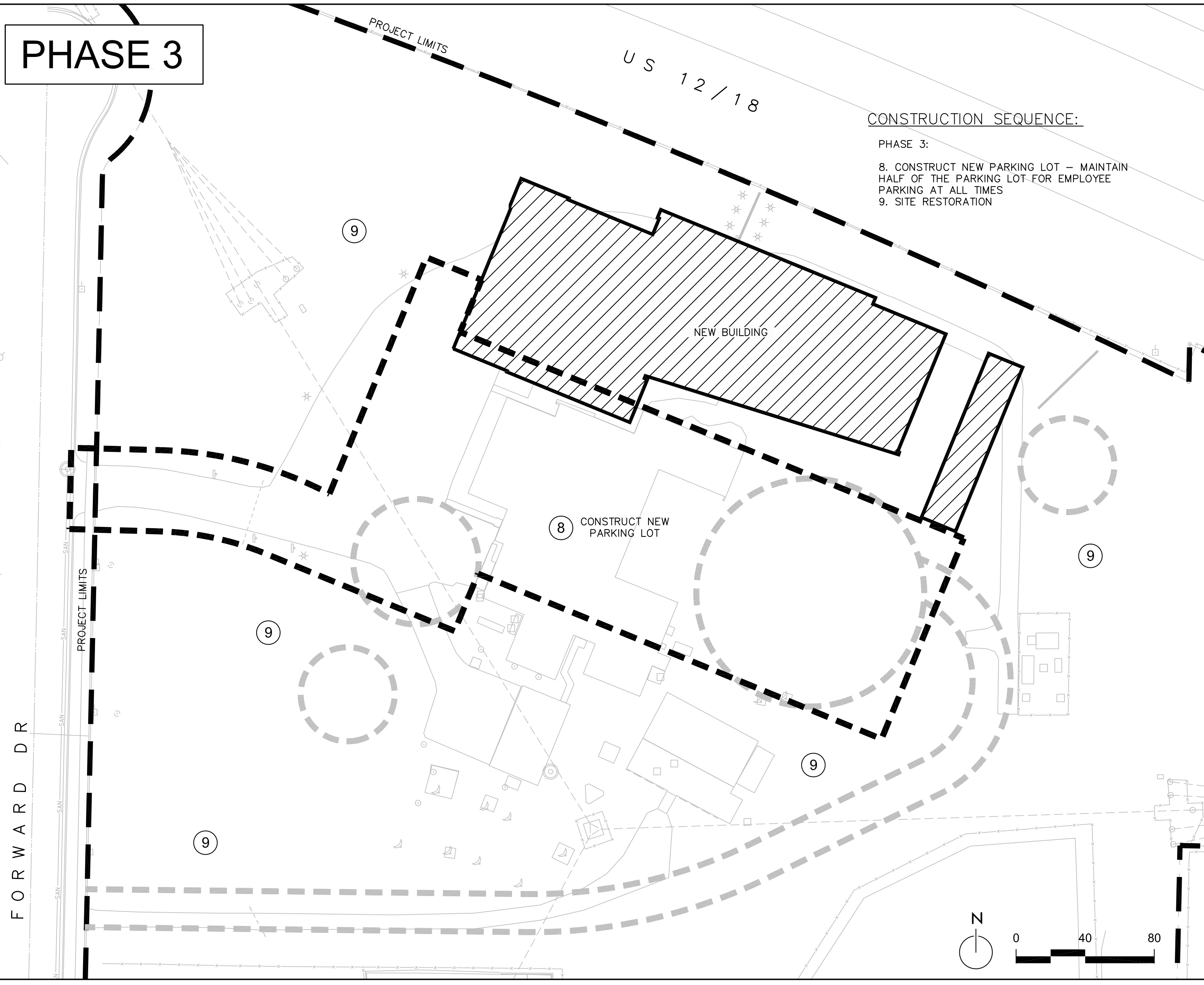
# PHASE 2

**CONSTRUCTION SEQUENCE:**  
PHASE 2:  
7. DEMOLISH EXISTING BUILDING



# PHASE 3

**CONSTRUCTION SEQUENCE:**  
PHASE 3:  
8. CONSTRUCT NEW PARKING LOT — MAINTAIN HALF OF THE PARKING LOT FOR EMPLOYEE PARKING AT ALL TIMES  
9. SITE RESTORATION



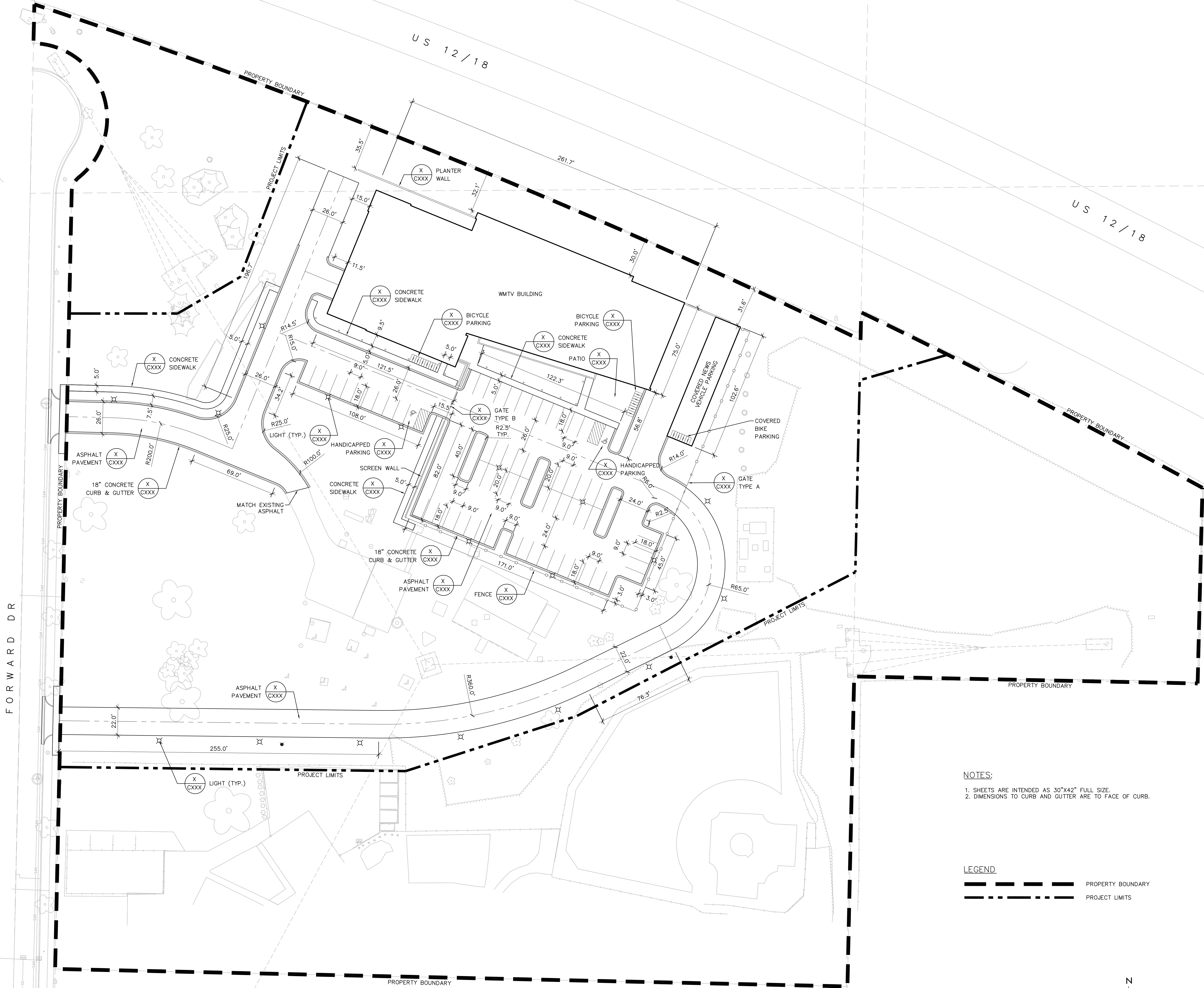
**ISSUES AND REVISIONS:**

No.	UDC SUBMITTAL Description	8/19/2015 Date

**GRAY TV - WMTV**  
615 FORWARD DRIVE  
MADISON, WI



**STAGING PLAN**



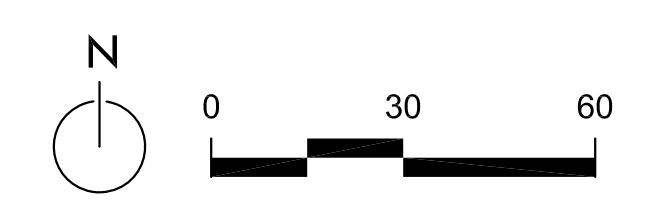
U S 12 / 18

U S 12 / 18

FORWARD DR

**NOTES:**  
 1. SHEETS ARE INTENDED AS 30"x42" FULL SIZE.  
 2. DIMENSIONS TO CURB AND GUTTER ARE TO FACE OF CURB.

**LEGEND**  
 ———— PROPERTY BOUNDARY  
 - - - - - PROJECT LIMITS



ISSUES AND REVISIONS:

No.	UDC SUBMITTAL Description	8/19/2015 Date

**GRAY TV - WMTV**  
 615 FORWARD DRIVE  
 MADISON, WI



**SITE LAYOUT PLAN**

PROJECT: 15-0090  
 DRAWN BY: Author

**C102**

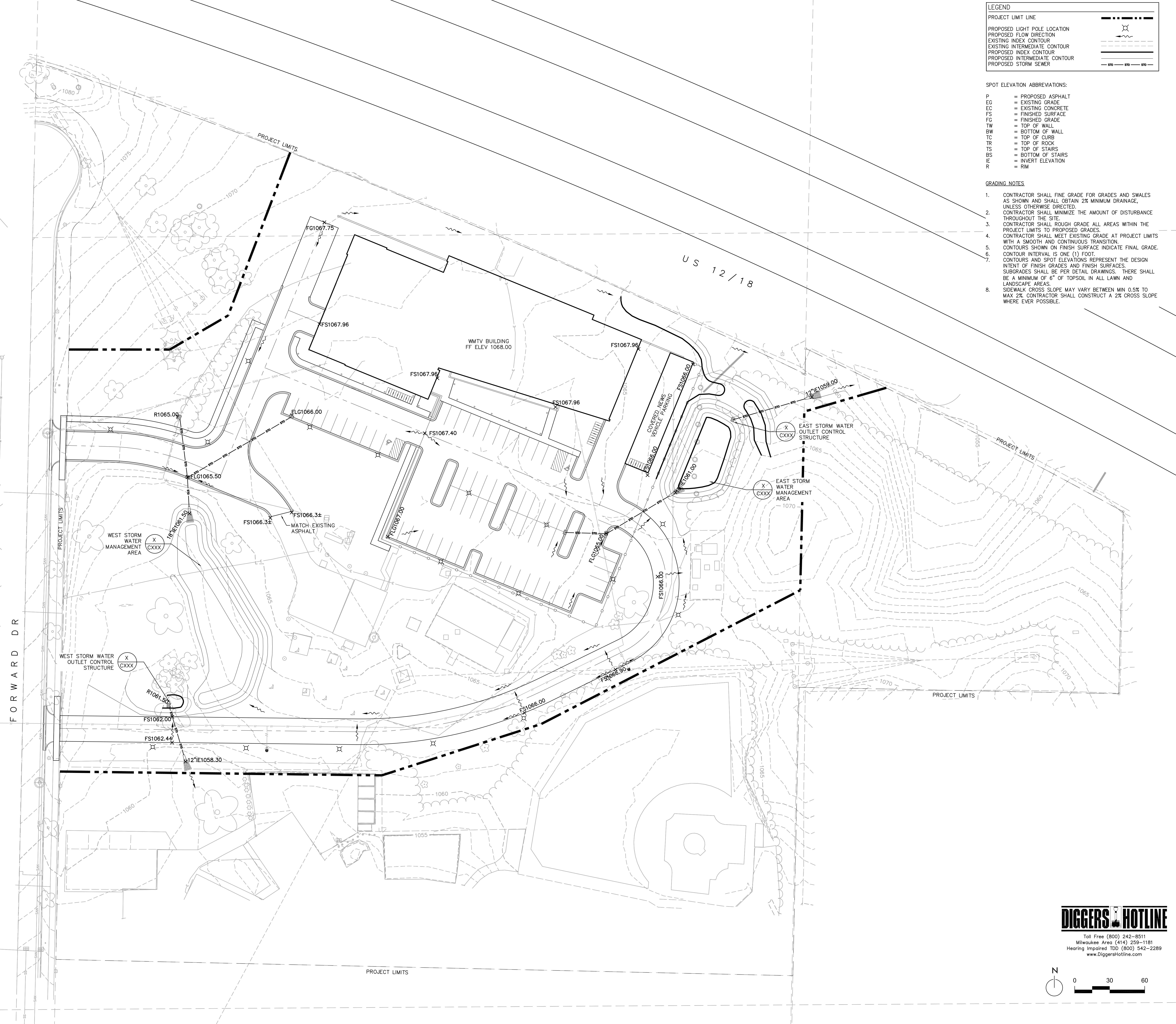
**LEGEND**

PROJECT LIMIT LINE	
PROPOSED LIGHT POLE LOCATION	
PROPOSED FLOW DIRECTION	
EXISTING INDEX CONTOUR	
EXISTING INTERMEDIATE CONTOUR	
PROPOSED INDEX CONTOUR	
PROPOSED INTERMEDIATE CONTOUR	
PROPOSED STORM SEWER	

**SPOT ELEVATION ABBREVIATIONS:**

P	= PROPOSED ASPHALT
EG	= EXISTING GRADE
EC	= EXISTING CONCRETE
FS	= FINISHED SURFACE
FG	= FINISHED GRADE
TW	= TOP OF WALL
BW	= BOTTOM OF WALL
TC	= TOP OF CURB
TR	= TOP OF ROCK
TS	= TOP OF STAIRS
BS	= BOTTOM OF STAIRS
IE	= INVERT ELEVATION
R	= RIM

- GRADING NOTES**
- CONTRACTOR SHALL FINE GRADE FOR GRADES AND SWALES AS SHOWN AND SHALL OBTAIN 2% MINIMUM DRAINAGE, UNLESS OTHERWISE DIRECTED.
  - CONTRACTOR SHALL MINIMIZE THE AMOUNT OF DISTURBANCE THROUGHOUT THE SITE.
  - CONTRACTOR SHALL ROUGH GRADE ALL AREAS WITHIN THE PROJECT LIMITS TO PROPOSED GRADES.
  - CONTRACTOR SHALL MEET EXISTING GRADE AT PROJECT LIMITS WITH A SMOOTH AND CONTINUOUS TRANSITION.
  - CONTOURS SHOWN ON FINISH SURFACE INDICATE FINAL GRADE.
  - CONTOUR INTERVAL IS ONE (1) FOOT.
  - CONTOURS AND SPOT ELEVATIONS REPRESENT THE DESIGN INTENT OF FINISH GRADES AND FINISH SURFACES. SUBGRADES SHALL BE PER DETAIL DRAWINGS. THERE SHALL BE A MINIMUM OF 6" OF TOPSOIL IN ALL LAWN AND LANDSCAPE AREAS.
  - SIDEWALK CROSS SLOPE MAY VARY BETWEEN MIN 0.5% TO MAX 2%. CONTRACTOR SHALL CONSTRUCT A 2% CROSS SLOPE WHERE EVER POSSIBLE.



**ISSUES AND REVISIONS:**

No.	UDC SUBMITTAL Description	8/19/2015 Date

GRAY TV - WMTV  
615 FORWARD DRIVE  
MADISON, WI

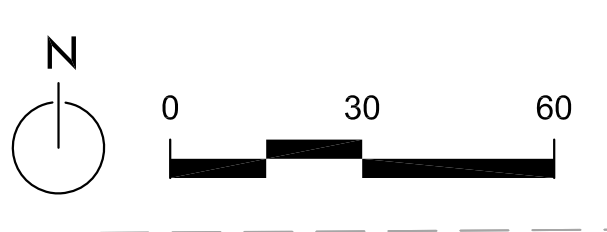


**SITE GRADING & DRAINAGE PLAN**

PROJECT: 15-0090  
DRAWN BY: Author

**C103**

**DIGGERS HOTLINE**  
Toll Free (800) 242-8511  
Milwaukee Area (414) 259-1181  
Hearing Impaired TDD (800) 542-2289  
www.DiggerHotline.com



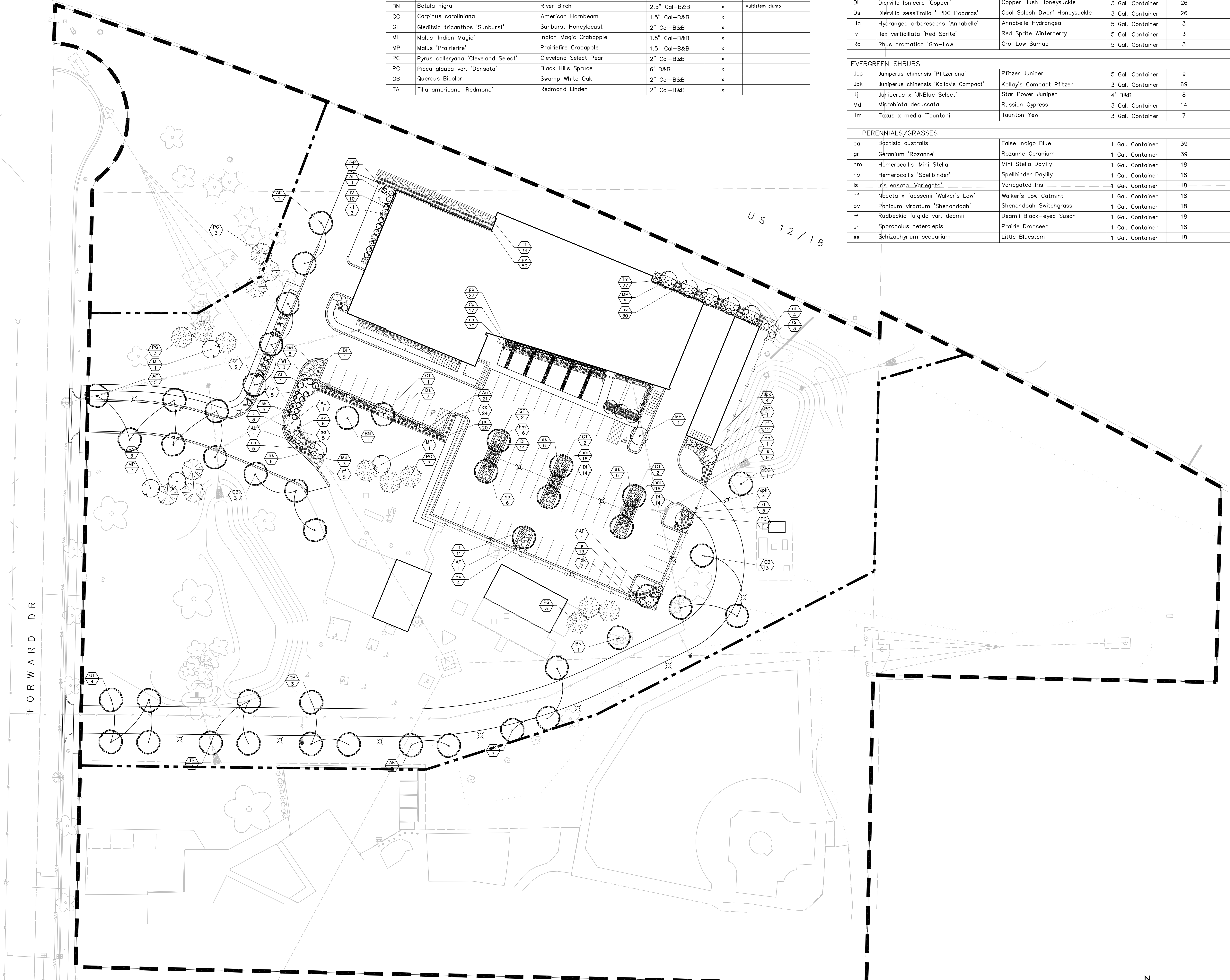
LANDSCAPE PLANT SCHEDULE

Symbol	Botanical name	Common Name	Size/Root	Quantity	Comments
<b>TREES</b>					
AF	Acer x freemanii 'Jeffersred'	Autumn Blaze Maple	2.5" Cal-B&B	x	
AL	Amelanchier x grandiflora 'Cole's Select'	Cole's Select Serviceberry	6" BB	x	Multistem clump
BN	Betula nigra	River Birch	2.5" Cal-B&B	x	Multistem clump
CC	Carpinus caroliniana	American Hornbeam	1.5" Cal-B&B	x	
GT	Gleditsia tricanthos 'Sunburst'	Sunburst Honeylocust	2" Cal-B&B	x	
MI	Malus 'Indian Magic'	Indian Magic Crabapple	1.5" Cal-B&B	x	
MP	Malus 'Prairiefire'	Prairiefire Crabapple	1.5" Cal-B&B	x	
PC	Pyrus calleryana 'Cleveland Select'	Cleveland Select Pear	2" Cal-B&B	x	
PG	Picea glauca var. 'Densata'	Black Hills Spruce	6" B&B	x	
QB	Quercus bicolor	Swamp White Oak	2" Cal-B&B	x	
TA	Tilia americana 'Redmond'	Redmond Linden	2" Cal-B&B	x	

<b>SHRUBS</b>					
Aa	Aronia melanocarpa 'Autumn Magic'	Autumn Magic Chokeberry	3 Gal. Container	26	
Am	Aronia melanocarpa	Black Chokeberry	3 Gal. Container	26	
Cr	Cornus racemosa	Gray Dogwood	5 Gal. Container	26	
DI	Diervilla lonicera 'Copper'	Copper Bush Honeysuckle	3 Gal. Container	26	
Ds	Diervilla sessilifolia 'LPDC Podaras'	Cool Splash Dwarf Honeysuckle	3 Gal. Container	26	
Ha	Hydrangea arborescens 'Annabelle'	Annabelle Hydrangea	5 Gal. Container	3	
Iv	Ilex verticillata 'Red Sprite'	Red Sprite Winterberry	5 Gal. Container	3	
Ra	Rhus aromatica 'Gro-Low'	Gro-Low Sumac	5 Gal. Container	3	

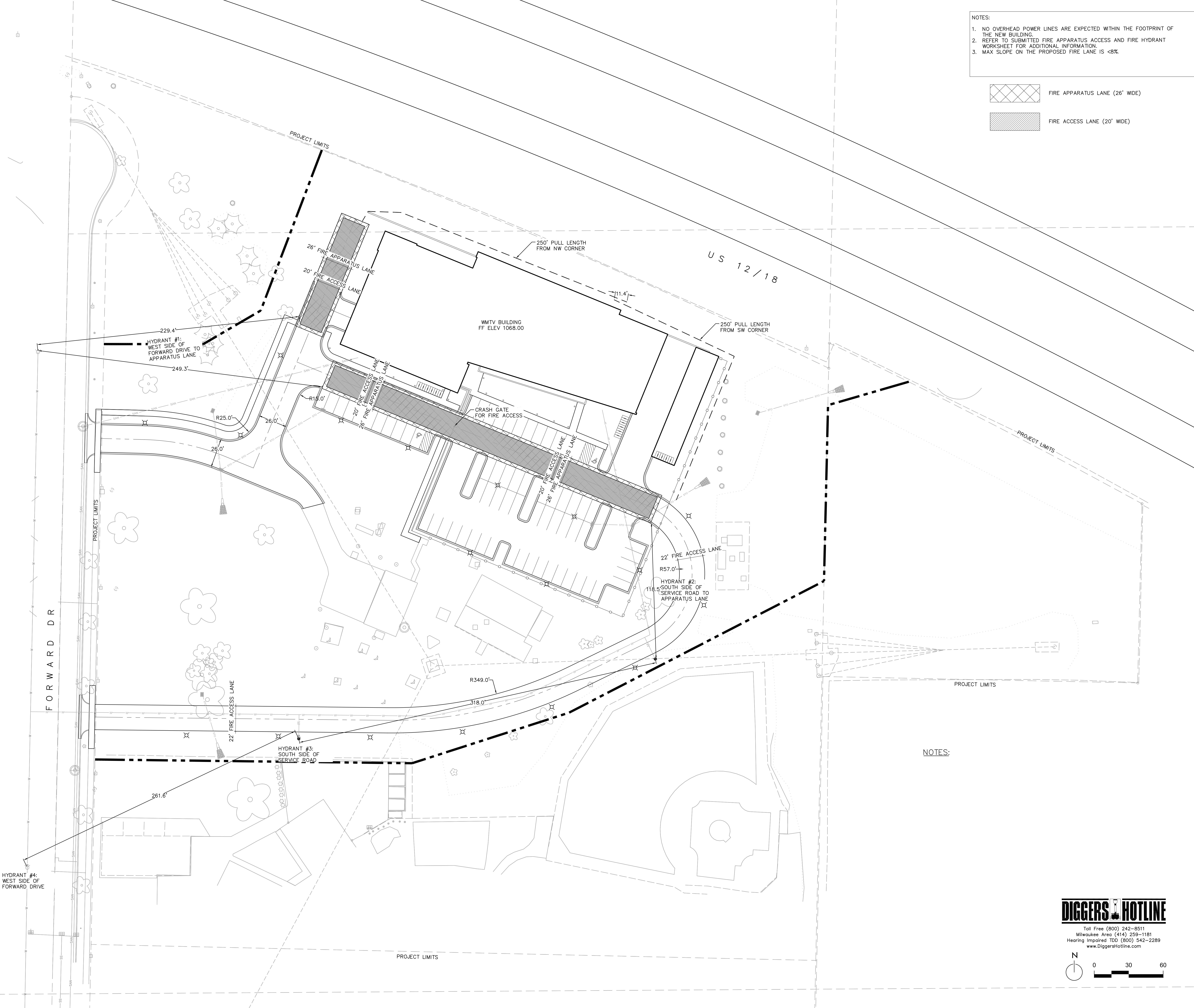
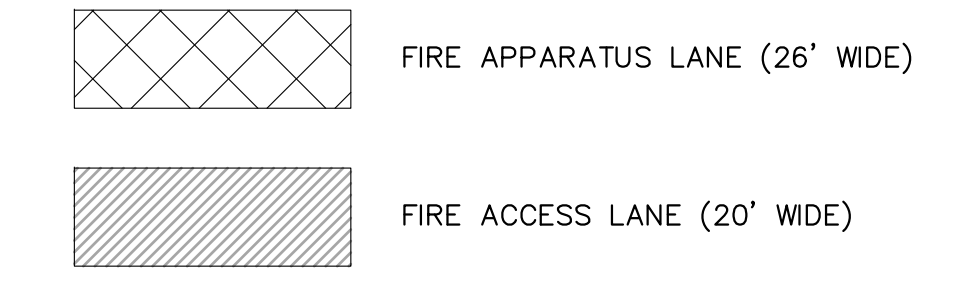
<b>EVERGREEN SHRUBS</b>					
Jcp	Juniperus chinensis 'Pfitzeriana'	Pfitzer Juniper	5 Gal. Container	9	
Jpk	Juniperus chinensis 'Kallay's Compact'	Kallay's Compact Pfitzer	3 Gal. Container	69	
Jj	Juniperus x 'UNBlue Select'	Star Power Juniper	4" B&B	8	
Md	Microbiota decussata	Russian Cypress	3 Gal. Container	14	
Tm	Taxus x media 'Tauntoni'	Taunton Yew	3 Gal. Container	7	

<b>PERENNIALS/GRASSES</b>					
ba	Baptisia australis	False Indigo Blue	1 Gal. Container	39	
gr	Geranium 'Rozanne'	Rozanne Geranium	1 Gal. Container	39	
hm	Hemerocallis 'Mini Stella'	Mini Stella Daylily	1 Gal. Container	18	
hs	Hemerocallis 'Spellbinder'	Spellbinder Daylily	1 Gal. Container	18	
is	Iris ensata 'Variegata'	Variegated Iris	1 Gal. Container	18	
nf	Nepeta x faassenii 'Walker's Low'	Walker's Low Catmint	1 Gal. Container	18	
pv	Panicum virgatum 'Shenandoah'	Shenandoah Switchgrass	1 Gal. Container	18	
rf	Rudbeckia fulgida var. deamii	Deamii Black-eyed Susan	1 Gal. Container	18	
sh	Sporobolus heterolepis	Prairie Dropseed	1 Gal. Container	18	
ss	Schizachyrium scoparium	Little Bluestem	1 Gal. Container	18	



<b>ISSUES AND REVISIONS:</b>		
No.	UDC SUBMITTAL Description	8/19/2015 Date

NOTES:  
1. NO OVERHEAD POWER LINES ARE EXPECTED WITHIN THE FOOTPRINT OF THE NEW BUILDING.  
2. REFER TO SUBMITTED FIRE APPARATUS ACCESS AND FIRE HYDRANT WORKSHEET FOR ADDITIONAL INFORMATION.  
3. MAX SLOPE ON THE PROPOSED FIRE LANE IS <8%.



NOTES:

ISSUES AND REVISIONS:

No.	UDC SUBMITTAL Description	8/19/2015 Date

GRAY TV - WMTV  
615 FORWARD DRIVE  
MADISON, WI

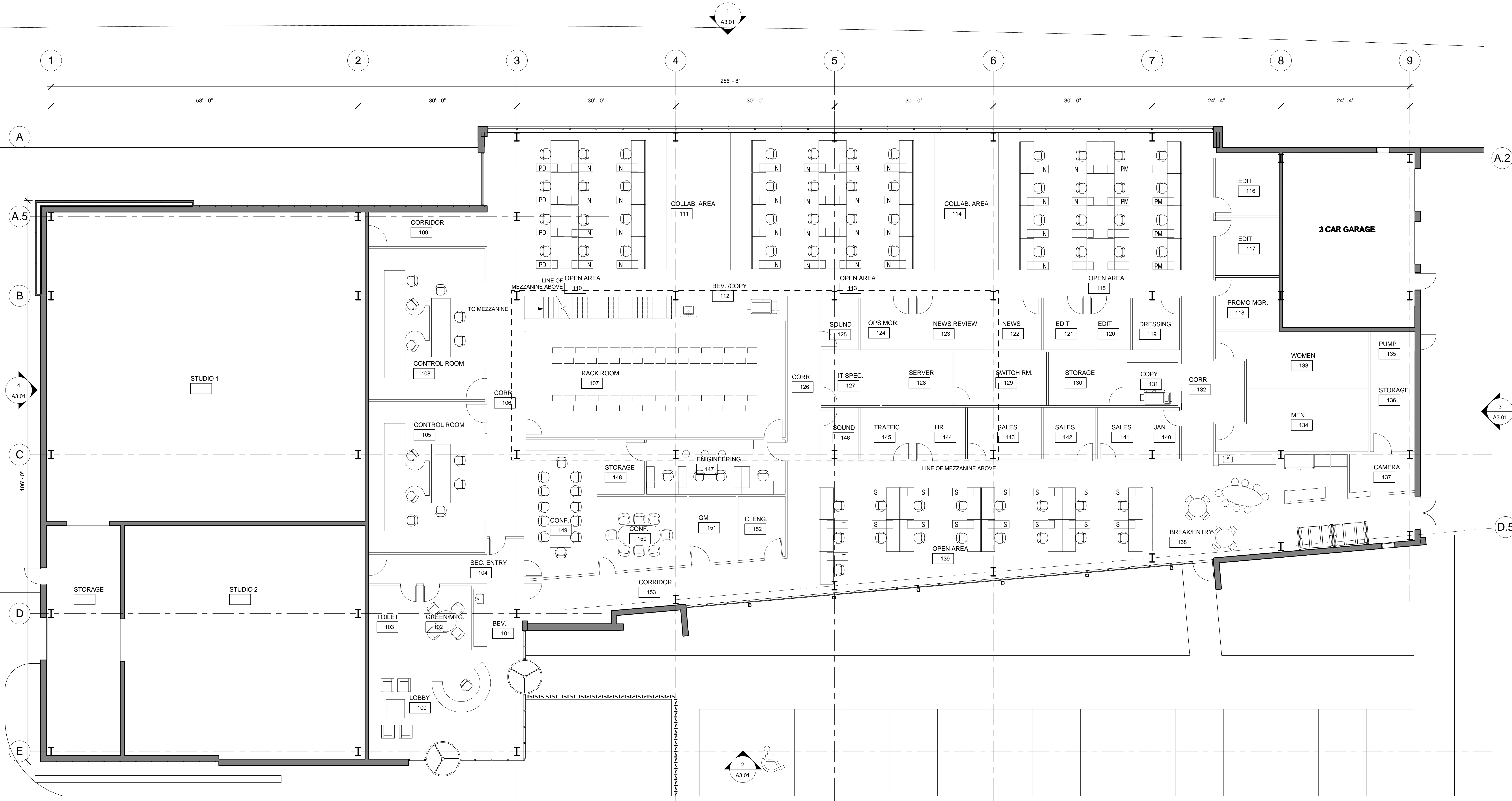


FIRE ACCESS PLAN

**DIGGERS HOTLINE**  
 Toll Free (800) 242-8511  
 Milwaukee Area (414) 259-1181  
 Hearing Impaired TDD (800) 542-2289  
 www.DiggersHotline.com



PROJECT: 15-0090  
 DRAWN BY: Author  
 C105



1 1ST FLOOR  
 1/8" = 1'-0"

ISSUES AND REVISIONS:

No.	Description	Date

LDC SUBMITTAL 08/19/2015  
 GRAY TV - WMTV  
 615 FORWARD DRIVE  
 MADISON, WI

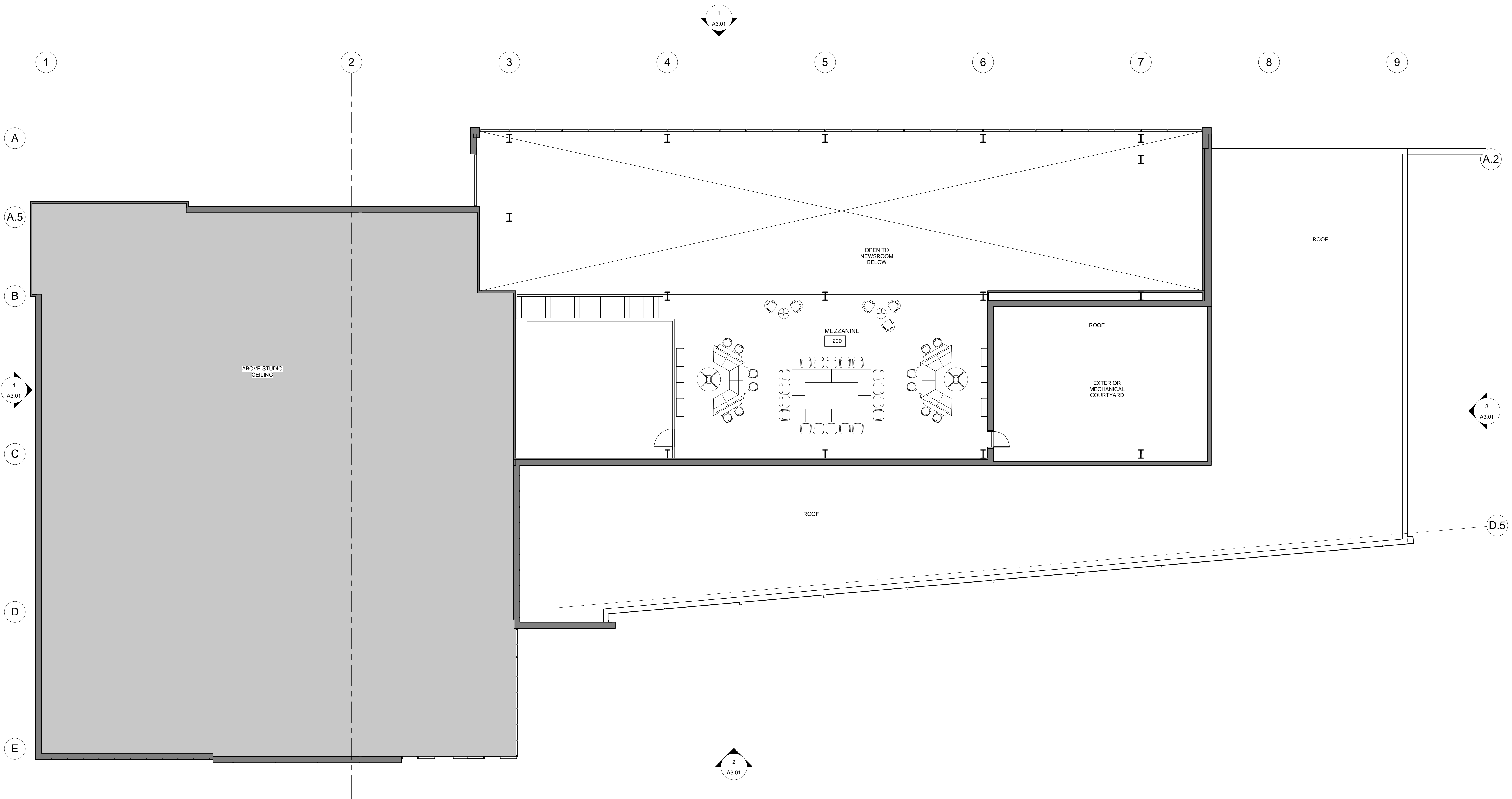


1ST FLOOR PLAN

PROJECT: 15-0090  
 DRAWN BY: PBD  
A2.01

8/18/2015 3:30:27 PM C:\projects\15-0090\15-0090.dwg





ISSUES AND REVISIONS:

No.	Description	Date

GRAY TV - WMTV  
 615 FORWARD DRIVE  
 MADISON, WI

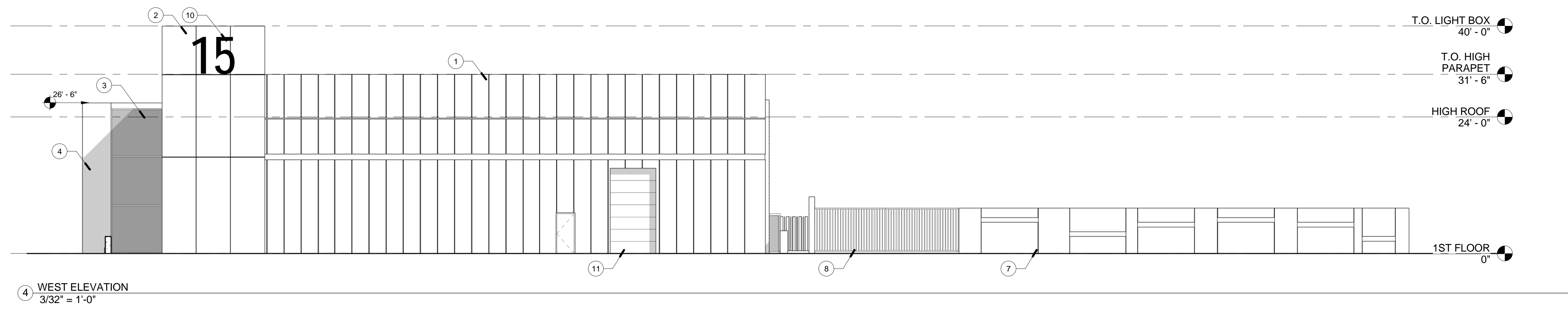


**MEZZANINE FLOOR  
 PLAN**

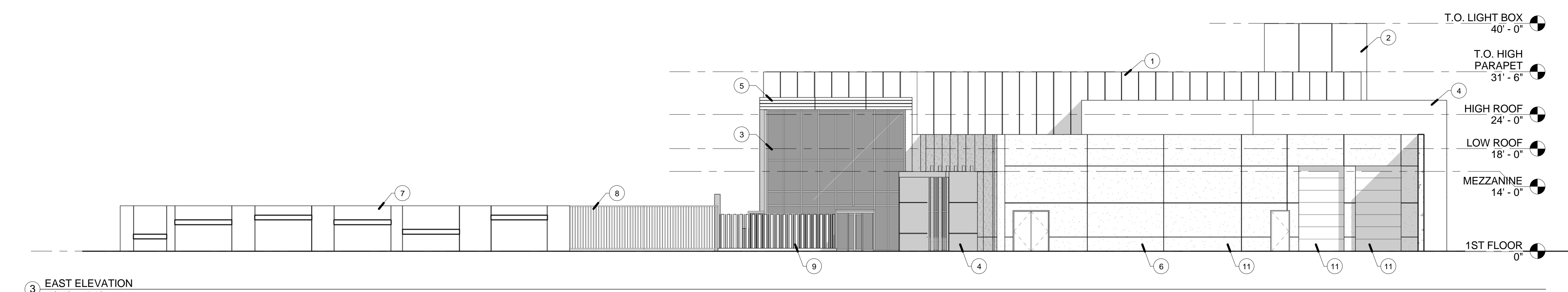
PROJECT:  
 15-0090  
 DRAWN BY:  
 Author

**A2.01B**

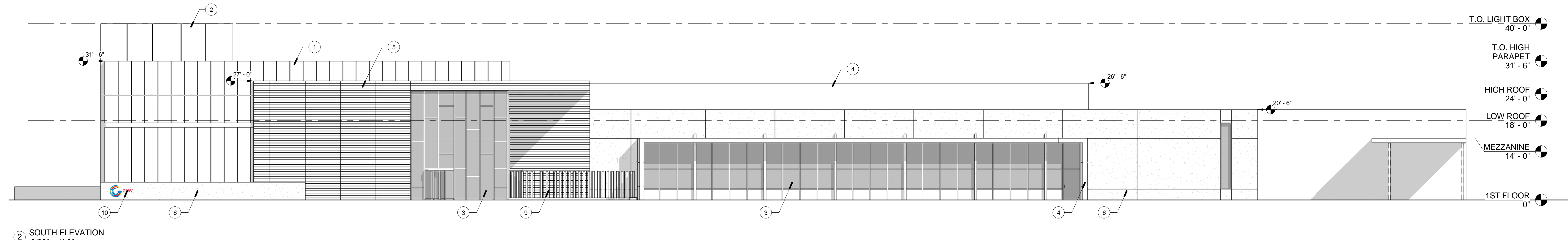
① MEZZANINE  
 1/8" = 1'-0"



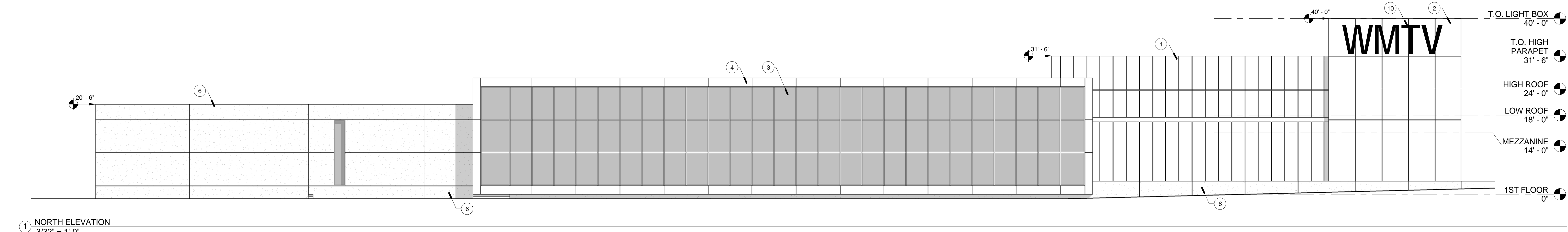
4 WEST ELEVATION  
3/32" = 1'-0"



3 EAST ELEVATION  
3/32" = 1'-0"



2 SOUTH ELEVATION  
3/32" = 1'-0"

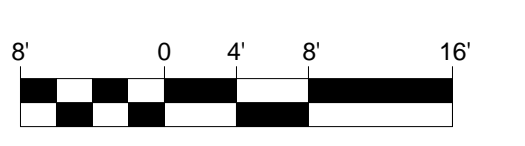


1 NORTH ELEVATION  
3/32" = 1'-0"



KEYNOTES

- 1 COMPOSITE METAL PANEL - VERTICALLY ORIENTED PANELS (STUDIO)
- 2 BACK LIT TRANSLUCENT GLASS (LIGHT BOX)
- 3 GLASS CURTAIN WALL
- 4 METAL FRAME/TRIM
- 5 COMPOSITE METAL PANEL - HORIZONTALLY ORIENTED PANELS (ENTRY)
- 6 STUCCO (LOW OFFICE VOLUME)/SITE WALLS
- 7 METAL PANEL SCREENWALL AT SECURED PARKING LOT
- 8 CRASH GATE AT DRIVE AISLE
- 9 DECORATIVE SCREENWALL/SECURE FENCE AT ENTRY
- 10 BACKLIT SIGNAGE
- 11 OVERHEAD DOOR
- 12 STUCCO CLAD SITE WALL



ISSUES AND REVISIONS:

No.	Description	Date

GRAY TV - WMTV  
615 FORWARD DRIVE  
MADISON, WI



BUILDING ELEVATIONS

PROJECT:  
15-0090  
DRAWN BY:  
Author

A3.01

8/15/2015 10:59:39 AM C:\Users\pbd\OneDrive\Drawings\15-0090\15-0090\_01.dwg



① FREEWAY RENDERED PERSPECTIVE



② ENTRANCE RENDERED PERSPECTIVE

ISSUES AND REVISIONS:

No.	Description	Date

GRAY TV - WMTV  
 615 FORWARD DRIVE  
 MADISON, WI



**BUILDING  
 PERSPECTIVES**

PROJECT:  
 15-0090  
 DRAWN BY:  
 Author  
A3.02