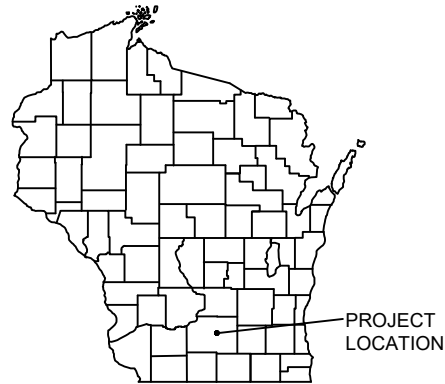


HARPER ROAD LIFT STATION UPGRADES

CITY OF MADISON DANE COUNTY, WISCONSIN



LOCATION OF PROPOSED LIFT STATION

SITE ADDRESS: 3402 HARPER RD. MADISON, DANE COUNTY, WI 53704.



SHEET INDEX

<u>GENERAL</u>	
G-1	TITLE SHEET
G-2	LEGEND, SYMBOLS AND ABBREVIATIONS
<u>GENERAL</u>	
C-1	EXISTING SITE PLAN
C-2	PROPOSED SITE PLAN
C-3	CIVIL DETAILS
C-4	CIVIL DETAILS
<u>MECHANICAL</u>	
M-1	EXISTING PUMP STATION REMOVAL PLAN
M-2	PROPOSED LIFT STATION PLAN
M-3	PROPOSED LIFT STATION SECTIONS
<u>ELECTRICAL</u>	
E-1	ELECTRICAL SYMBOLS AND ABBREVIATIONS NO.1
E-2	ELECTRICAL SYMBOLS AND ABBREVIATIONS NO.2
E-3	ELECTRICAL SITE PLAN - EXISTING
E-4	ELECTRICAL SITE PLAN - PROPOSED
E-5	ONE-LINE DIAGRAM
E-6	LIFT STATION P&ID
E-7	SCADA OVERVIEW
E-8	LIFT STATION PANEL LAYOUT
E-9	SCHEDULES
E-10	LIFT STATION ELECTRICAL DETAILS NO.1
E-11	LIFT STATION ELECTRICAL DETAILS NO.2
E-12	LIFT STATION ELECTRICAL DETAILS NO.3

LEGEND

	EXISTING WATER MAIN
	EXISTING GATE VALVE & HYDRANT
	EXISTING WATER SERVICE & CURB STOP
	PROPOSED WATERMAIN, VALVE, & HYDRANT
	PROPOSED WATER SERVICE & CURB STOP
	EXISTING SANITARY SEWER & MANHOLE
	EXISTING FORCEMAIN
	EXISTING STORM SEWER & INLET
	PROPOSED STORM SEWER & INLET
	PROPOSED SANITARY MANHOLE & SEWER MAIN
	PROPOSED FORCE MAIN
	PROPOSED BURIED ELECTRIC
	BURIED ELECTRIC
	PROPOSED BURIED GAS
	BURIED GAS & VALVE
	BURIED CABLE TELEVISION
	BURIED TELEPHONE
	BURIED FIBER OPTICS
	OVERHEAD UTILITY
	EXISTING SIDEWALK
	PROPOSED SIDEWALK
	EXISTING CULVERT PIPE
	PROPOSED CULVERT PIPE
	FENCE LINE
	SILT FENCE
	RIGHT-OF-WAY
	BASELINE
	PROPERTY LINE
	TREE LINE
	BENCHMARK
	IRON PIPE
	IRON ROD
	CONTROL POINT
	UTILITY POLE & GUY
	SOIL BORING
	LIGHT POLE
	PEDESTAL
	STREET SIGN
	TREE - DECIDUOUS
	TREE - CONIFEROUS
	TREE TO BE REMOVED
	HYDRANT

UTILITIES

GAS:
MADISON GAS & ELECTRIC COMPANY
133 S. BLAIR STREET
MADISON, WI 53701
CONTACT: SHAUN ENDRES
(608) 252-7224
SENDRES@MGE.COM

ELECTRIC:
ALLIANT ENERGY
4902 NORTH BILTMORE LANE
MADISON, WI 53713
CONTACT: MICHAEL BROLIN
(608) 458-4871
MICHAELBROLIN@ALLIANTENERGY.COM

TELEPHONE & CATV:
TDS TELECOM
525 JUNCTION ROAD
MADISON, WI 53717
CONTACT: JERRY MYERS
(608) 664-4404
JERRY.MYERS@TDSTELECOM.COM

CHARTER COMMUNICATIONS
2701 DANIELS STREET
MADISON, WI 53718
CONTACT: TOM PAYNE
(608) 574-3331
TOM.PAYNE@CHARTERCOM.COM

SANITARY SEWER:
MADISON METROPOLITAN SEWERAGE DISTRICT
1610 MOORLAND ROAD
MADISON, WI 53713
CONTACT: BRUCE BORELLI
(608) 222-1201
BRUCEB@MADSEWER.ORG

WATERMAIN:
CITY OF MADISON
119 E. OLIN AVENUE
MADISON, WI 53713
CONTACT: ADAM WIESERHOEFT
(608) 266-9121
AWIEDERHORFT@MADISONWATER.ORG
AFTER HOURS EMERGENCY: (608) 266-4665

STORM SEWER:
CITY OF MADISON
CITY - COUNTY BUILDING, ROOM 115
210 MARTIN LUTHER KING JR. BOULEVARD
MADISON, WI 53703
CONTACT: GREG FRIES
(608) 267-1199
GFRIES@CITY OF MADISON.COM

GENERAL, SITE/CIVIL, PROCESS MECHANICAL

ELECTRICAL

Dial 811 or (800) 242-8511

www.DiggersHotline.com

NOTE:
UTILITY LOCATIONS SHOWN ON PLANS ARE APPROXIMATE AND CONTRACTOR SHALL HAVE APPROPRIATE UTILITY MARK EXACT LOCATIONS PRIOR TO CONSTRUCTION.

GENERAL NOTES

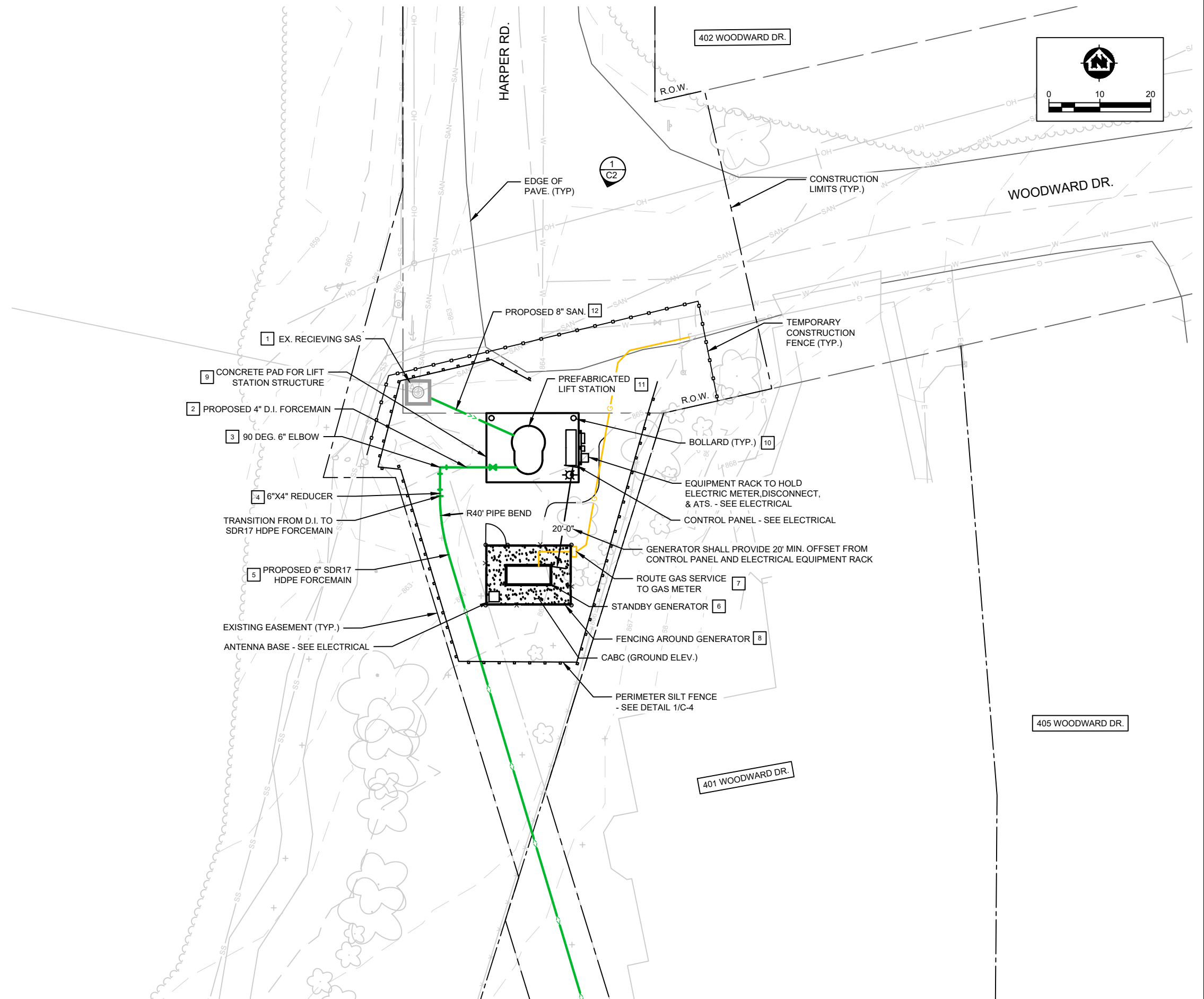
- A. SEE GENERAL NOTES ON G-1.
- B. SEE ELECTRICAL PLANS FOR ADDITIONAL SITE INFORMATION.
- C. ALL DISTURBED GRASS AREAS SHALL BE RESTORED W/ 6" TOPSOIL, SEE, FERTILIZER, AND EROSION MAT TO MATCH EXISTING GRADES.
- D. ALL DISTURBED PAVEMENT SHALL BE SAWCUT, REMOVED, AND RESTORED PER INCLUDED DETAILS. FINAL SAWCUT LIMITS SHALL BE NEAT, STRAIGHT, AND REQUIRE APPROVAL BY OWNER OR ENGINEER PRIOR TO PAVEMENT REMOVAL. DISTURBED PAVEMENT MARKINGS SHALL BE REPLACED PER MADISON STANDARD SPECIFICATIONS.
- E. SEE EROSION CONTROL DETAILS ON C-4 FOR EROSION CONTROL REQUIREMENTS. THE METHODS AND STRUCTURES USED TO CONTROL EROSION SHALL BE THE RESPONSIBILITY OF THE CONTRACTOR.

KEY NOTES: #

- 1. CORE EXISTING SEWER ACCESS STRUCTURE (SAS) FOR NEW SAN. CONNECTION - SEE B/M-3. COORDINATE WITH CONSTRUCTION PHASING TO SWITCH FLOW TO PROPOSED LIFT STATION.
- 2. FORCEMAIN PIPING SHALL BE REINFORCED - SEE SPECS. COORDINATE CONSTRUCTION PHASING WITH EXISTING PUMP STATION REMOVALS. SEE GENERAL NOTES.
- 3. M.J. ELBOW W/ JOINT RESTRAINTS AND THRUST BLOCKING - SEE DETAIL 3/C-3.
- 4. M.J. REDUCER W/ JOINT RESTRAINTS AND THRUST BLOCKING. TRANSITION FROM D.I. TO SDR 17 HDPE - SEE DETAIL 3/C-3.
- 5. REPLACE EXISTING 4" C.I. FORCEMAIN WITH 6" SDR 17 HDPE
- 6. STANDBY GENERATOR MOUNTED ON CONCRETE PAD - SEE ELECTRICAL. CLEAR AND GRUB AS NECESSARY TO INSTALL GENERATOR & FENCE. CONTRACTOR TO MINIMIZE CLEARING AND GRUBBING TO EXTENT POSSIBLE. (TRIMMING CONSIDERED INCLUSIVE).
- 7. COORDINATE GAS METER, SERVICE LOCATION, AND SIZE WITH GAS UTILITY. PROVIDE 4" THICK CONCRETE PAD BELOW.
- 8. FENCING SHALL BE ALUMINUM FIXED LOUVER FENCE W/ PERSONNEL GATE OPENING OF 48-IN MIN. FENCE SHALL BE A MINIMUM OF 1' TALLER THAN THE TOP OF THE GENERATOR. FENCE SHALL BE AMETCO MANUFACTURING CORP., OR EQUAL. CONTRACTOR SHALL SUBMIT CATALOG CUTS FOR REVIEW AND SELECTION OF STYLE AND COLOR BY ENGINEER. COORDINATE FENCING DIMENSIONS WITH GENERATOR DIMENSIONS AND GENERATOR CLEARANCE - SEE ELECTRICAL.
- 9. SEE MECHANICAL FOR CONCRETE PAD SECTION AND ELEVATIONS.
- 10. PROTECT LIFT STATION STRUCTURE W/ BOLLARDS - SEE DETAIL 5/C-3
- 11. PREFABRICATED LIFT STATION - SEE MECHANICAL FOR DETAILS AND SECTIONS.
- 12. 8" SDR26 PVC. COORDINATE INVERT ELEVATIONS WITH EXISTING AND PROPOSED STRUCTURES. SEE MECHANICAL.



1
C2
EXISTING SITE - PERSPECTIVE



PROJECT DATE:	DRAWN BY:	NO.	DATE	REVISION	BY:
	CJP				
	DESIGNED BY:	Init			
	CHECKED BY:	Init			

PRELIMINARY



ENGINEERING | ARCHITECTURE | SURVEYING
FUNDING | PLANNING | ENVIRONMENTAL
1702 Pankratz St Madison, WI 53704
(608) 242-7779 www.msa-ps.com
© MSA Professional Services, Inc.



00373105 HARPER RD. LIFT STATION UPGRADES
CITY OF MADISON
DANE COUNTY, WI

PROPOSED SITE PLAN

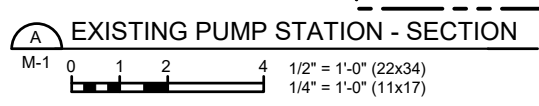
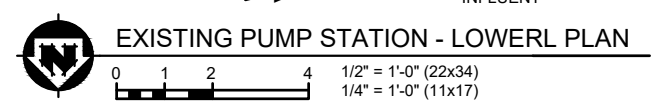
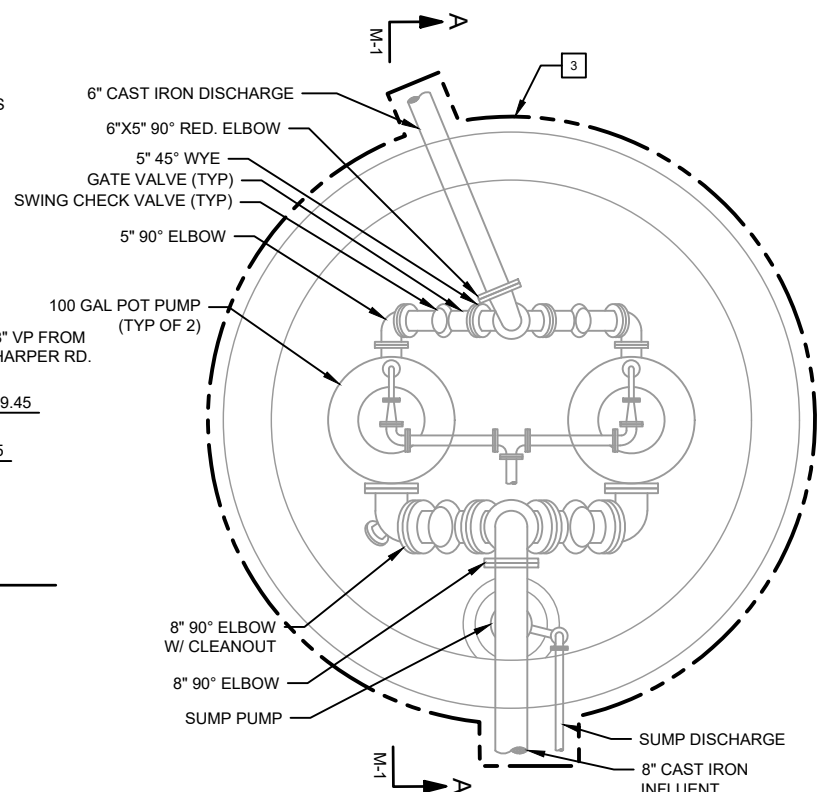
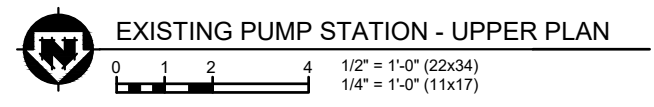
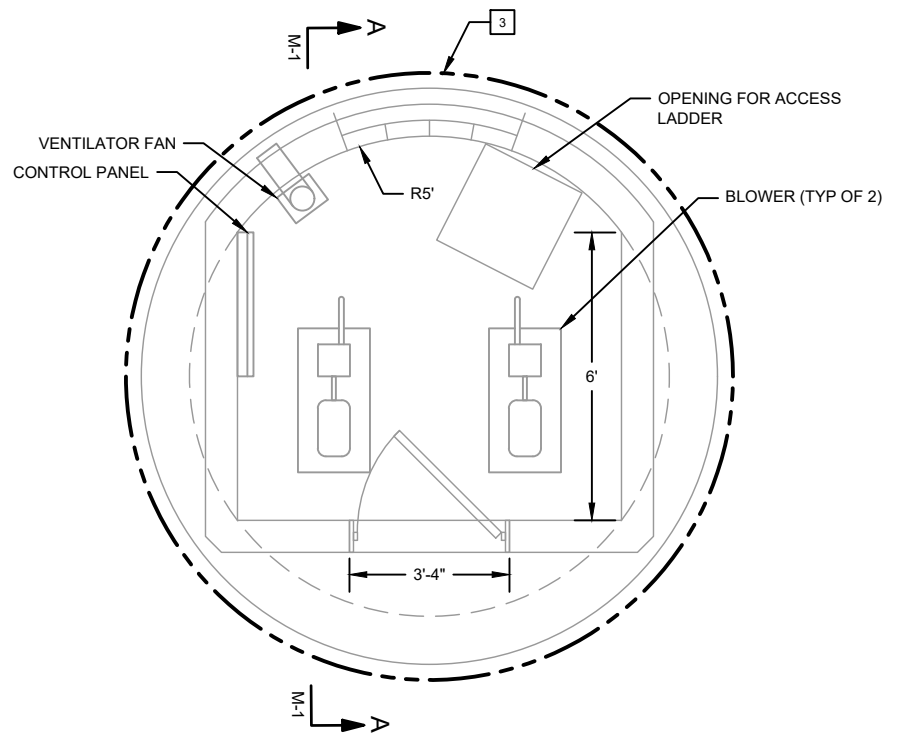
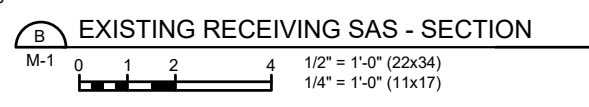
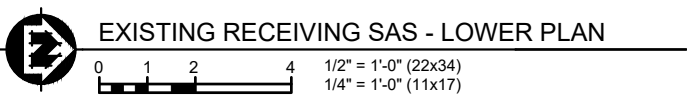
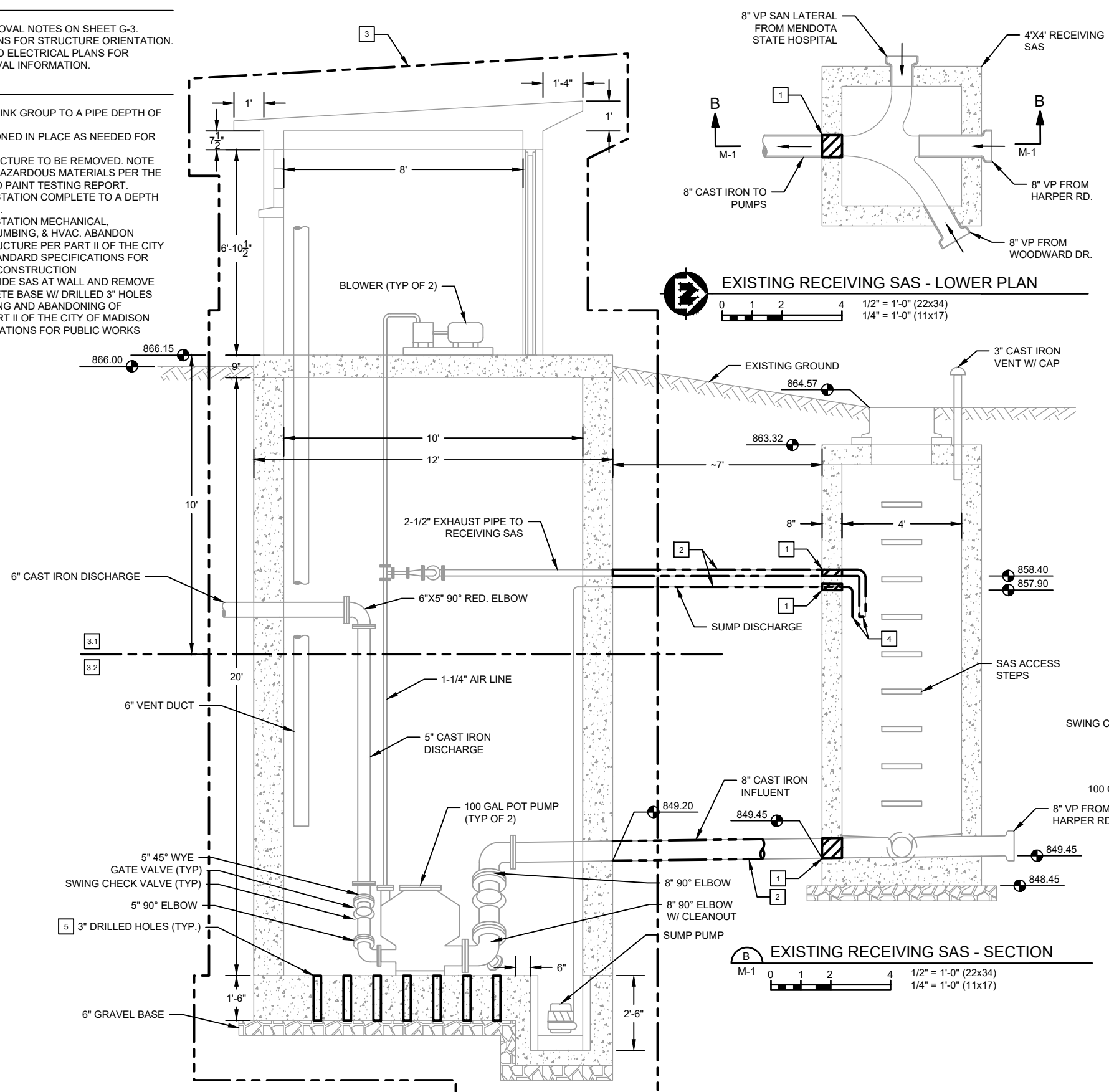
PROJECT NO.
00373105
SHEET
C-2

GENERAL NOTES:

- 1.) SEE GENERAL REMOVAL NOTES ON SHEET G-3.
- 2.) SEE CIVIL SITE PLANS FOR STRUCTURE ORIENTATION.
- 3.) REFER TO CIVIL AND ELECTRICAL PLANS FOR ADDITIONAL REMOVAL INFORMATION.

KEY NOTES:

1. PLUG WITH NON-SHRINK GROUT TO A PIPE DEPTH OF 12" MINIMUM.
2. REMOVE OR ABANDONED IN PLACE AS NEEDED FOR CONSTRUCTION.
3. PUMP STATION STRUCTURE TO BE REMOVED. NOTE THE PRESENCE OF HAZARDOUS MATERIALS PER THE ASBESTOS AND LEAD PAINT TESTING REPORT.
 - 3.1. REMOVE PUMP STATION COMPLETE TO A DEPTH OF 10' BELOW FF.
 - 3.2. REMOVE PUMP STATION MECHANICAL, ELECTRICAL, PLUMBING, & HVAC. ABANDON REMAINING STRUCTURE PER PART II OF THE CITY OF MADISON STANDARD SPECIFICATIONS FOR PUBLIC WORKS CONSTRUCTION.
4. SAWCUT PIPE AT INSIDE SAS AT WALL AND REMOVE PENETRATE CONCRETE BASE W/ DRILLED 3" HOLES PRIOR TO BACKFILLING AND ABANDONING OF STRUCTURE PER PART II OF THE CITY OF MADISON STANDARD SPECIFICATIONS FOR PUBLIC WORKS CONSTRUCTION.



PROJECT DATE:	DRAWN BY:	NO.	DATE	REVISION	BY:
	CJP				
	DESIGNED BY:	Init			
	CHECKED BY:	Init			

PRELIMINARY



ENGINEERING | ARCHITECTURE | SURVEYING
 FUNDING | PLANNING | ENVIRONMENTAL
 1702 Pankratz St Madison, WI 53704
 (608) 242-7779 www.msa-ps.com
 © MSA Professional Services, Inc.



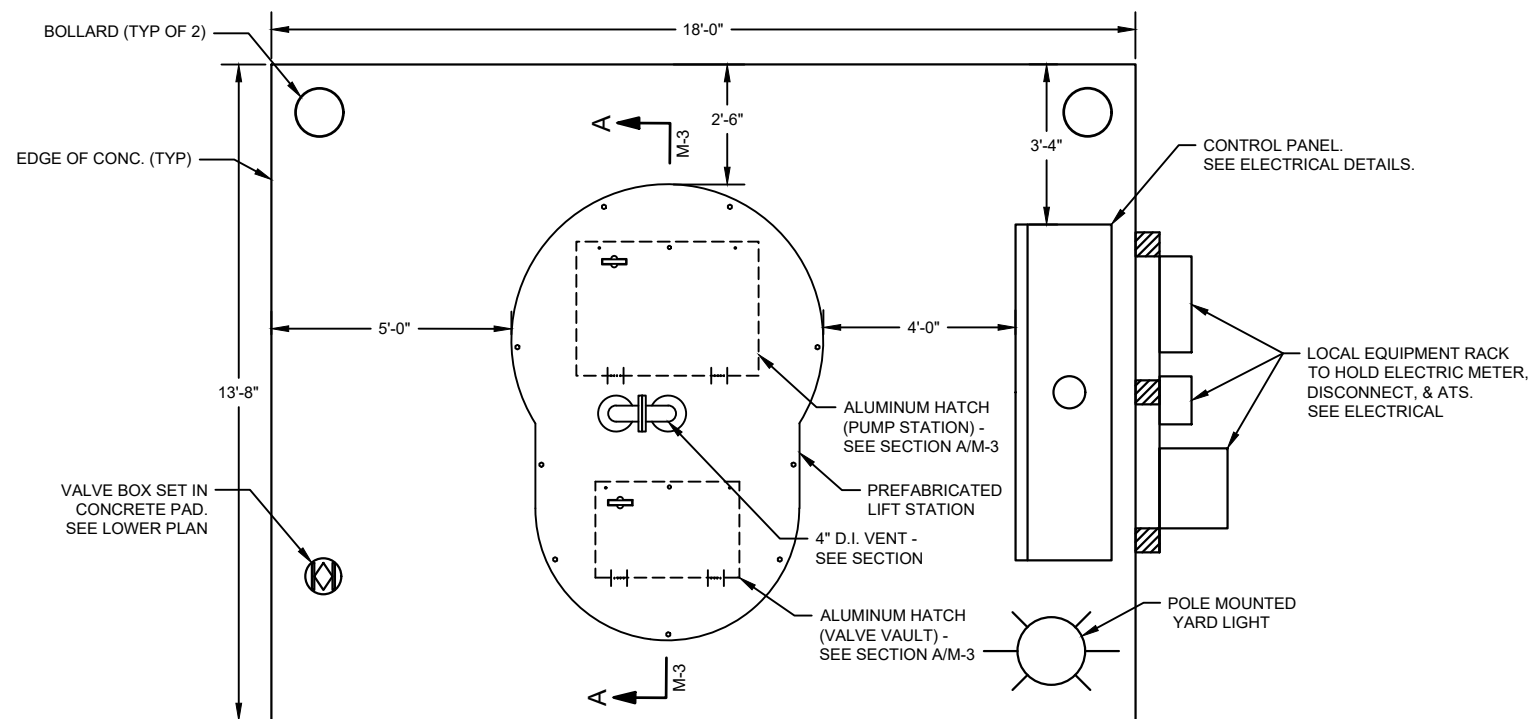
00373105 HARPER RD. LIFT STATION UPGRADES
 CITY OF MADISON
 DANE COUNTY, WI

EXISTING PUMP STATION REMOVAL PLAN

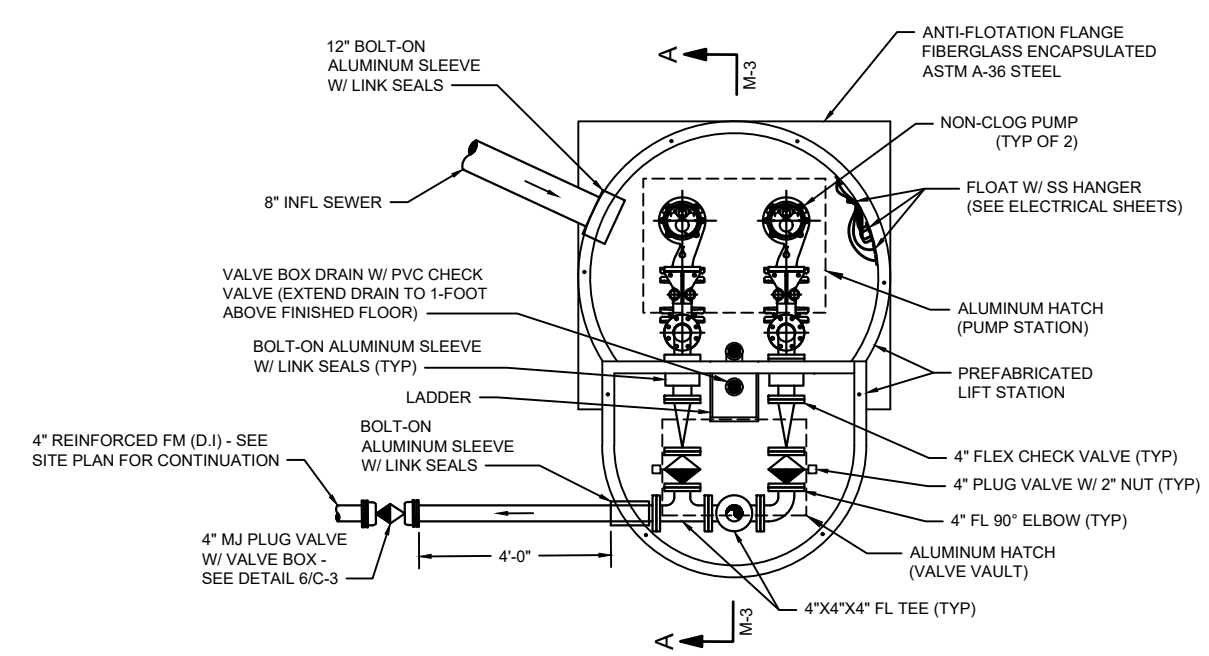
PROJECT NO.
00373105
 SHEET
M-1

GENERAL NOTES:

- 1.) ALL EXPOSED PIPING AND VALVES SHALL BE EPOXY COATED. THE COLOR SHALL BE LIGHT GRAY.
- 2.) ALL BURIED PIPING SHALL HAVE RESTRAINED JOINTS.
- 3.) ALL FITTINGS SHALL BE RESTRAINED MECHANICALLY BY MEGA-LUG OR EQUAL.
- 4.) ALL BACKFILL SHALL BE GRANULAR AND STRUCTURALLY STABLE, COMPACTED, AND TESTED TO 95% MODIFIED PROCTOR.
- 5.) EXTEND HATCH DRAINS TO FLOOR. (NOT SHOWN)
- 6.) ALL ELECTRICAL REF SHALL BE COORDINATED WITH ELECTRICAL SHEETS.
- 7.) HORIZONTAL DIMENSIONS FOR EXCAVATION OF STRUCTURES SHALL BE A MINIMUM OF 5 FEET LARGER THAN THE OUTSIDE WALL PLAN DIMENSIONS. ALL STRUCTURES SHALL BE EXCAVATED DOWN TO THE UNDERLYING MATERIAL. CONSTRUCTION SHALL BEGIN WITH THOROUGHLY COMPACTING THE EXISTING SOILS.
- 8.) SEE CIVIL, EROSION CONTROL, AND ELECTRICAL DETAILS FOR ADDITIONAL INFORMATION.
- 9.) ACCEPTABLE BACKFILL MATERIAL FOR THE PROPOSED LIFT STATION SHALL BE CLEAN, WELL GRANULATED, FREE FLOWING, NON CORROSIVE AND INERT. IT SHALL BE FREE OF ICE, SNOW, DEBRIS, ROCK, ORGANIC MATERIAL, ALL OF WHICH COULD DAMAGE THE TANK AND INTERFERE WITH THE COMPACTION OF THE BACKFILL MATERIAL. THE LARGEST PARTICLES SHALL NOT BE LARGER THAN 3/4". NOT MORE THAN 3% (BY WEIGHT) SHALL PASS THROUGH A #8 SIEVE, AND THE BACKFILL MATERIAL SHALL CONFORM TO ASTM C-33, PARAGRAPH 9.1 REQUIREMENTS.
- 10.) ACCEPTABLE BACKFILL MATERIAL FOR THE PROPOSED LIFT STATION SHALL INCLUDE PEA GRAVEL. (NATURALLY ROUNDED PARTICLES WITH A MINIMUM DIAMETER OF 1/8" AND MAXIMUM DIAMETER OF 3/4") OR CRUSHED ROCK (WASHED FREE-FLOWING ANGULAR PARTICLES BETWEEN 1/8" AND 1/2" IN SIZE).
- 11.) COMPACTED BACKFILL FOR PROPOSED LIFT STATION SHALL BE PLACED IN 12" LIFTS AND COMPACTED TO A MINIMUM OF 700 LBS. PER SQUARE FOOT. COMPACTED BACKFILL SHALL BE 12" MINIMUM HORIZONTAL DISTANCE FROM OUTSIDE WALL OF LIFT STATION.
- 12.) COORDINATE SIZE & LOCATION OF HATCHES W/ EQUIPMENT VENDOR



PROPOSED LIFT STATION - UPPER PLAN
 0 1 2 4
 1/2" = 1'-0" (22x34)
 1/4" = 1'-0" (11x17)



PROPOSED LIFT STATION - LOWER PLAN
 0 1 2 4
 1/2" = 1'-0" (22x34)
 1/4" = 1'-0" (11x17)

PROJECT DATE:	DRAWN BY: CJP	NO.	DATE	REVISION	BY:
	DESIGNED BY: Init				
	CHECKED BY: Init				

PRELIMINARY



ENGINEERING | ARCHITECTURE | SURVEYING
 FUNDING | PLANNING | ENVIRONMENTAL
 1702 Pankratz St Madison, WI 53704
 (608) 242-7779 www.msa-ps.com
 © MSA Professional Services, Inc.



00373105 HARPER RD. LIFT STATION UPGRADES
 CITY OF MADISON
 DANE COUNTY, WI

PROPOSED PUMP STATION PLAN

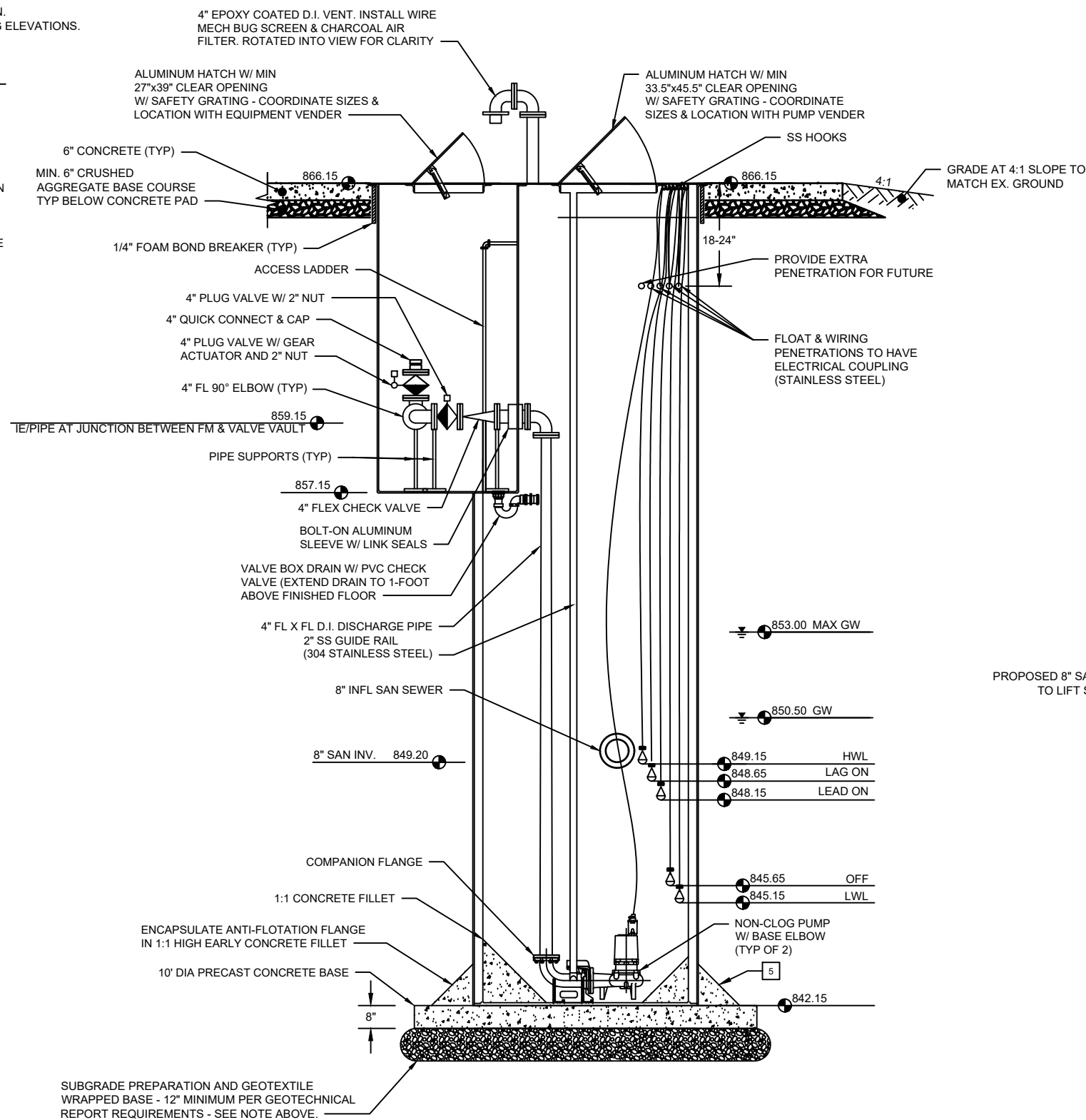
PROJECT NO.
00373105
 SHEET
M-2

GENERAL NOTES:

- 1.) SEE GENERAL NOTES ON SHEET M-2.
- 2.) SEE CIVIL SITE PLANS FOR STRUCTURE ORIENTATION.
- 3.) REFER TO REMOVAL PLAN FOR ADDITIONAL EXISTING ELEVATIONS.

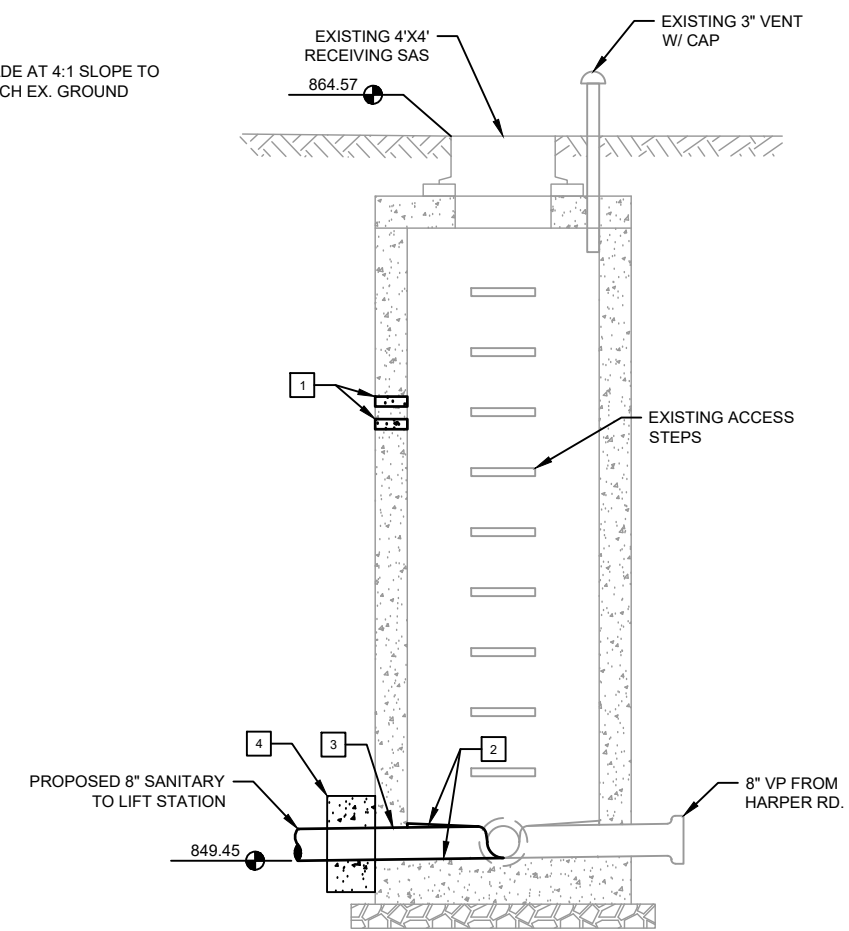
KEY NOTES: #

1. PLUG WITH NON-SHRINK GROUT TO A PIPE DEPTH OF 12" MINIMUM. SEE REMOVAL PLAN.
2. SAWCUT AND FORM NEW CHANNEL BOTTOM WITH NON-SHRINK GROUT
3. CORE - DRILL WALL FOR 8" SANITARY. FORM CHANNEL FLUSH TO INVERT. SEAL AROUND PIPE WITH MODULAR MECHANICAL RUBBER SEALS. VERIFY EXACT LOCATION IN FIELD.
4. CONCRETE COLLAR USING HIGH EARLY CONCRETE - SEE DETAIL 7/C-4.
5. ANCHOR PREFABRICATED LIFT STATION TO CONCRETE BASE PER MANUFACTURER'S RECOMMENDATIONS.

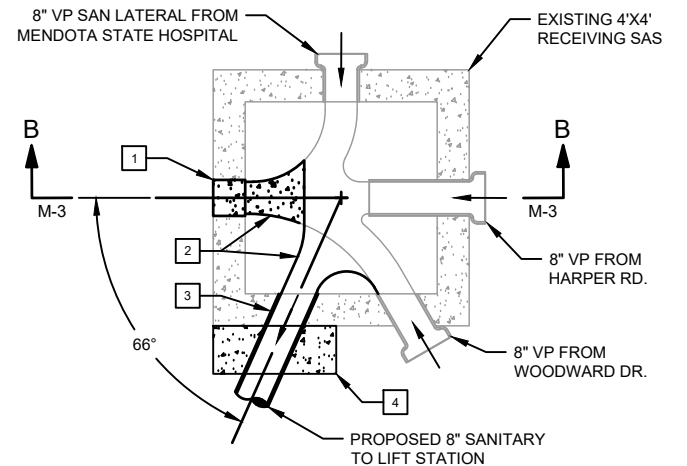


A PROPOSED LIFT STATION - SECTION
M-3
0 1 2 4 1/2" = 1'-0" (22x34)
1/4" = 1'-0" (11x17)

NOTE: CONTRACTOR TO PREPARE SUBGRADE AND PROVIDE GEOTEXTILE WRAPPED, COMPACTED STONE BASE AS DIRECTED BY THE GEOTECHNICAL REPORT.



B PROPOSED RECEIVING SAS - SECTION
M-3
0 1 2 4 1/2" = 1'-0" (22x34)
1/4" = 1'-0" (11x17)



PROPOSED RECEIVING SAS - LOWER PLAN
M-3
0 1 2 4 1/2" = 1'-0" (22x34)
1/4" = 1'-0" (11x17)

PROJECT DATE:	DRAWN BY:	NO.	DATE	REVISION	BY:
	CJP				
	DESIGNED BY:	Init			
	CHECKED BY:	Init			

PRELIMINARY



ENGINEERING | ARCHITECTURE | SURVEYING
FUNDING | PLANNING | ENVIRONMENTAL
1702 Pankratz St Madison, WI 53704
(608) 242-7779 www.msa-ps.com
© MSA Professional Services, Inc.



00373105 HARPER RD. LIFT STATION UPGRADES
CITY OF MADISON
DANE COUNTY, WI

PROPOSED PUMP STATION SECTIONS

PROJECT NO.
00373105
SHEET
M-3