

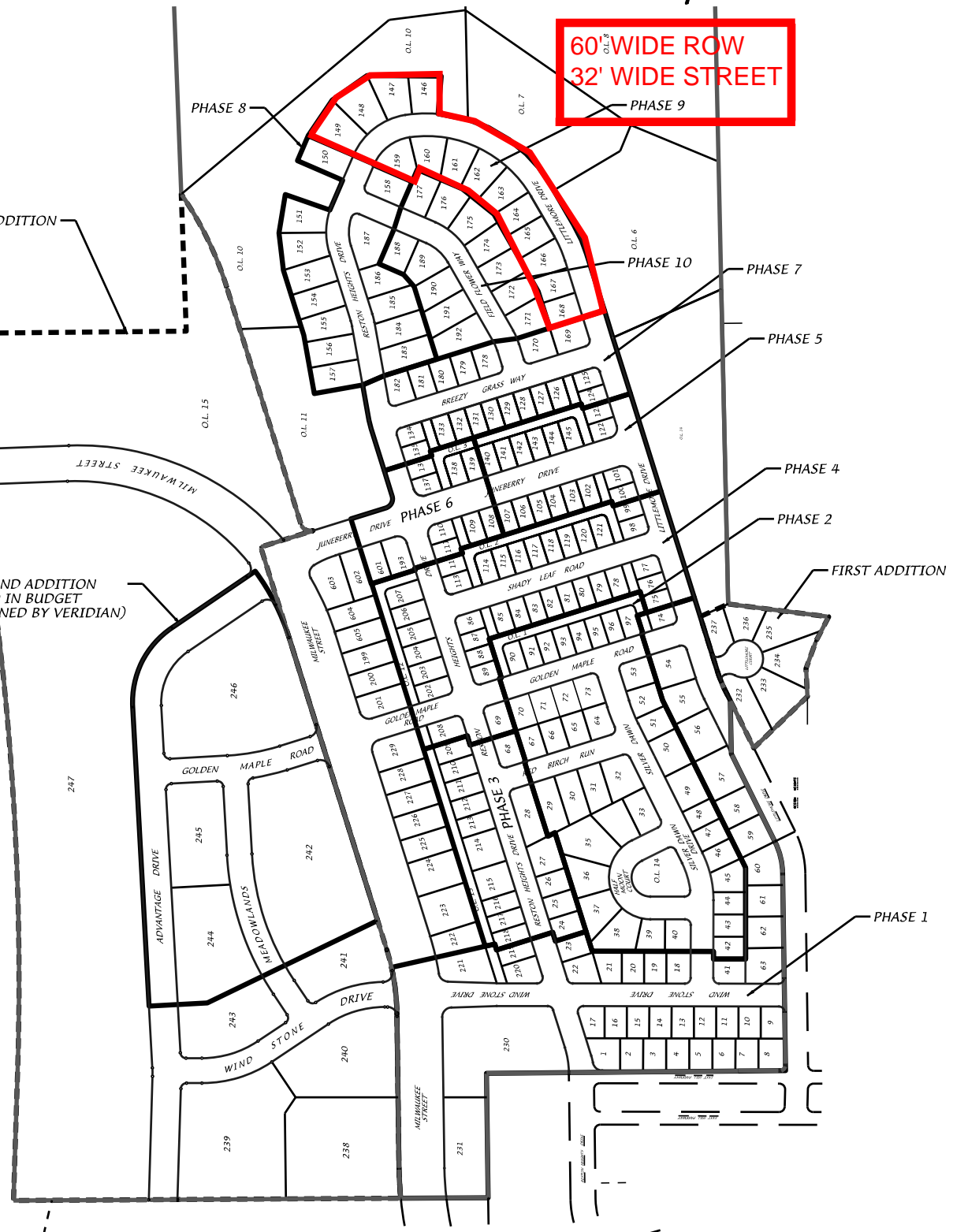
The Meadowlands - Phase Map

**60' WIDE ROW
32' WIDE STREET**

SECOND ADDITION

AREA OF 2ND ADDITION INCLUDED IN BUDGET (LOTS OWNED BY VERIDIAN)

INTERSTATE HIGHWAY 24



D'ONOFRIO KOTTKE AND ASSOCIATES, INC.
 7530 Westward Way, Madison, WI 53717
 Phone: 608.833.7530 • Fax: 608.833.1089
YOUR NATURAL RESOURCE FOR LAND DEVELOPMENT



0 400

 Scale 1" = 400'

DATE: 10-21-16
 F.N.: 14-05-121
 REV:

DRAWN BY:

U:/USER/0207118/DRAWINGS/Phase Map.DGN