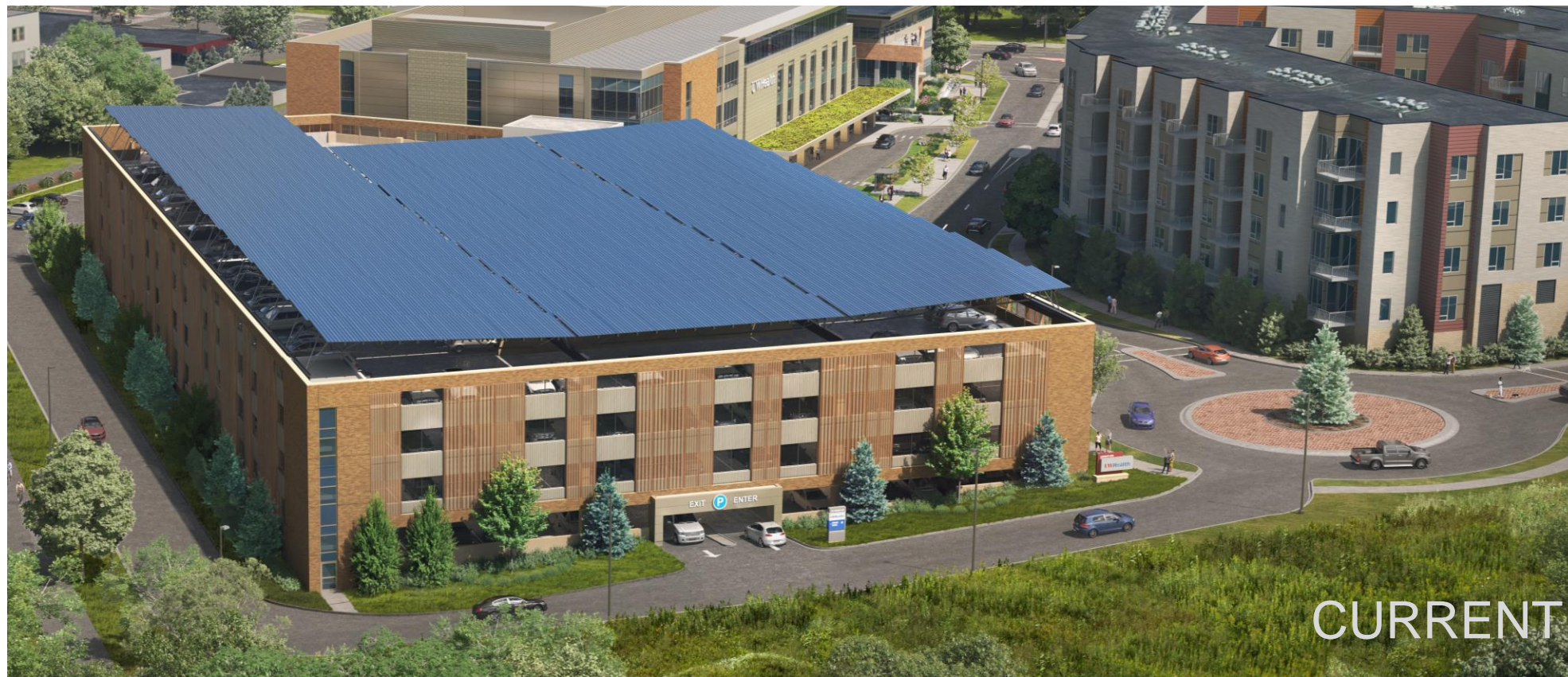
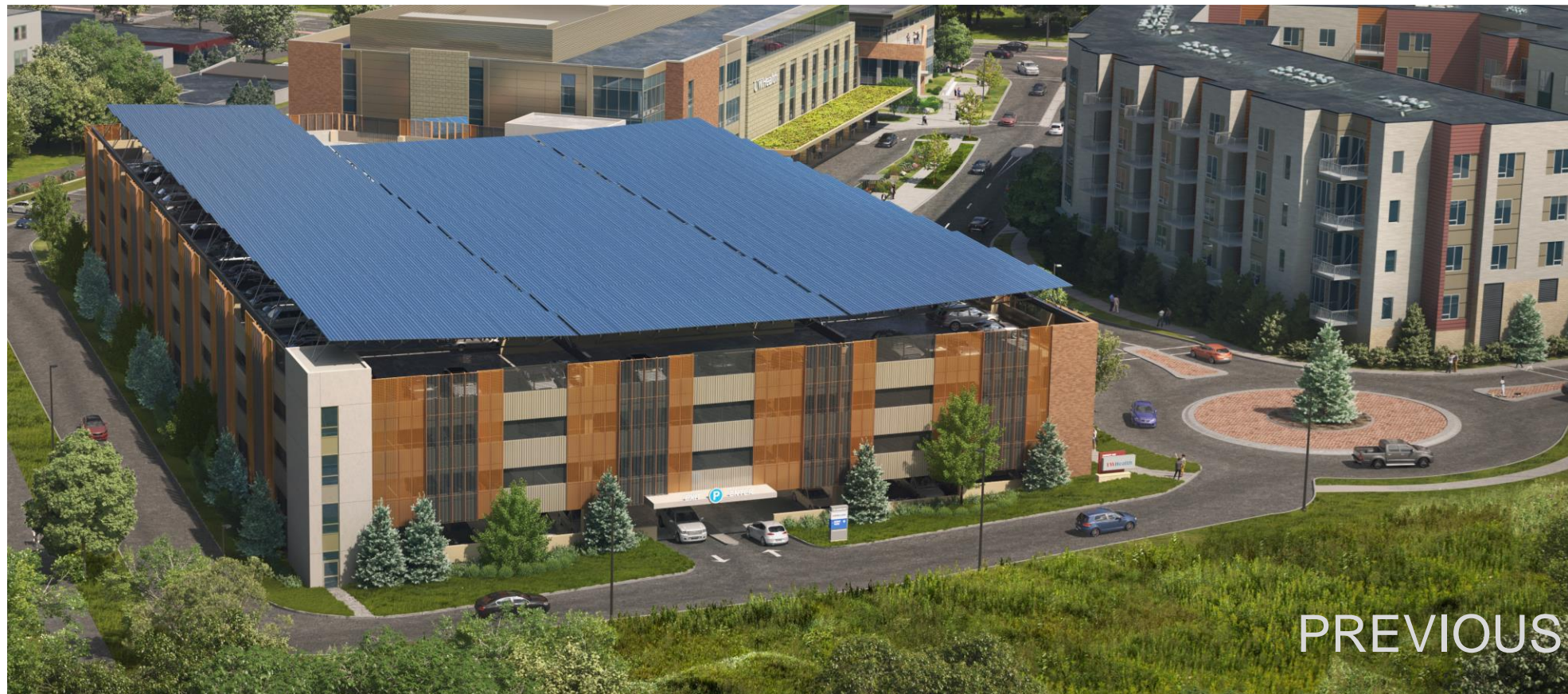


# 750 UNIVERSITY ROW EXPANSION







Expanded the use of brick to reinforce a consistent material palette

Established a “base” and “top” , allowing the metal panels to integrate better; This also became a counterpoint of horizontality, to soften the previous vertical reading

The rhythm of the metal panels was altered to create a more nuanced reading, picking up on the cues and scale of multifamily context across the street

















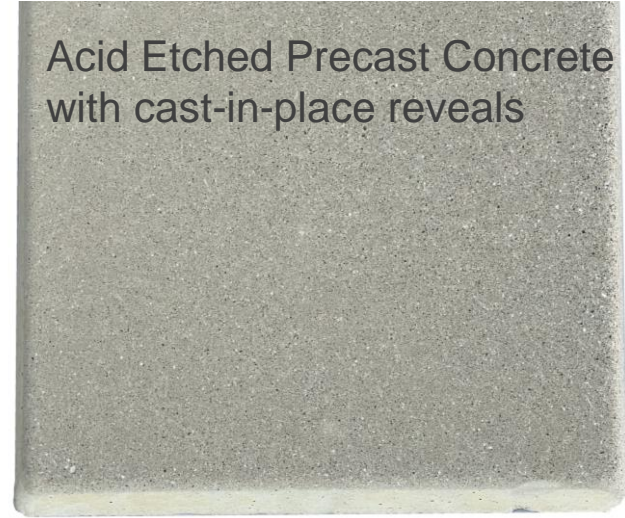




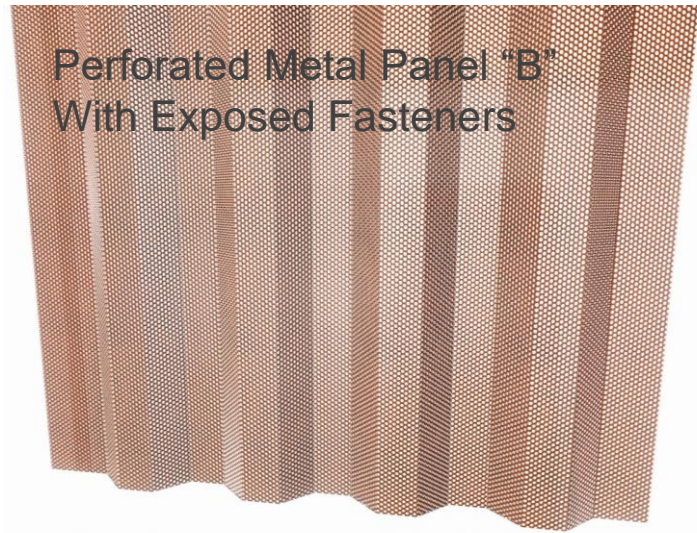




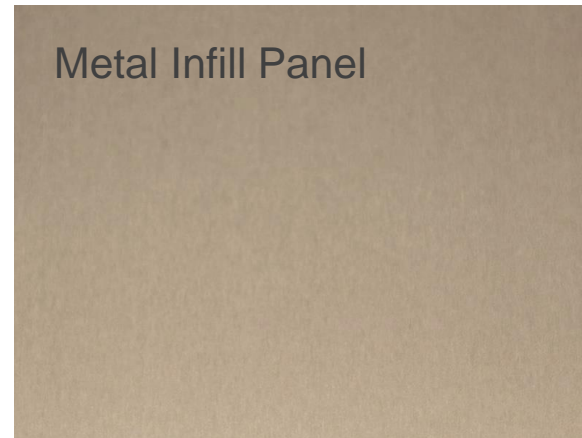
Precast-Thin Brick  
Endicott Coppertone



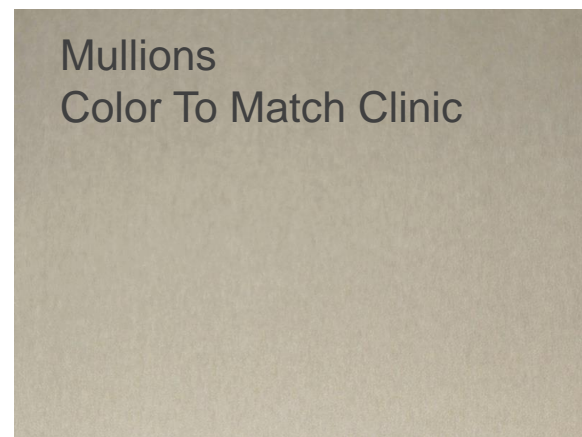
Acid Etched Precast Concrete  
with cast-in-place reveals



Perforated Metal Panel "B"  
With Exposed Fasteners



Metal Infill Panel



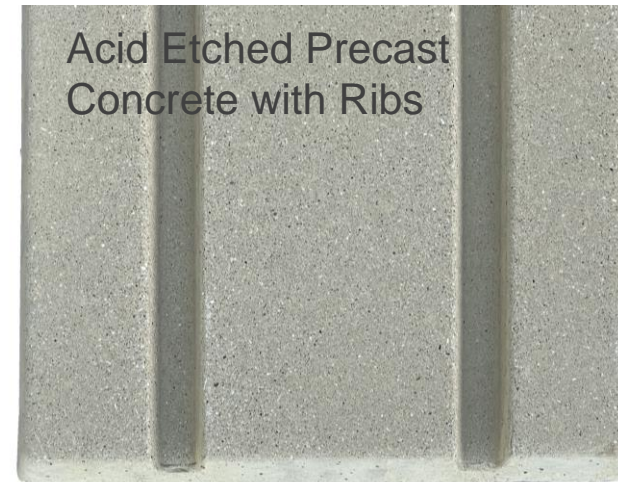
Mullions  
Color To Match Clinic







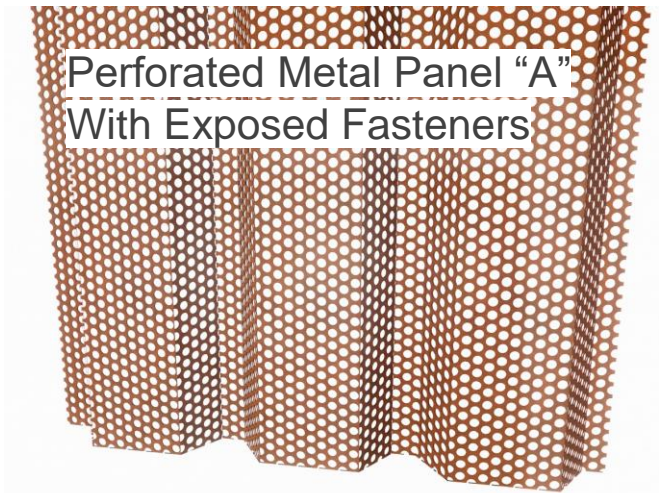
Precast-Thin Brick  
Endicott Coppertone



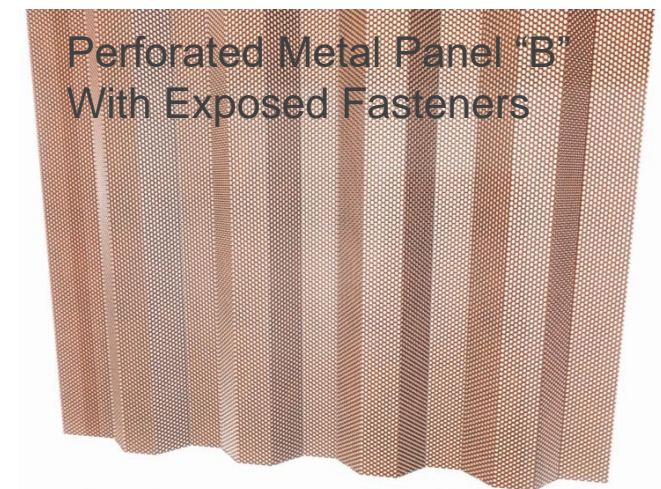
Acid Etched Precast  
Concrete with Ribs



Fence – Black Vinyl Coated  
Chain Link



Perforated Metal Panel "A"  
With Exposed Fasteners



Perforated Metal Panel "B"  
With Exposed Fasteners



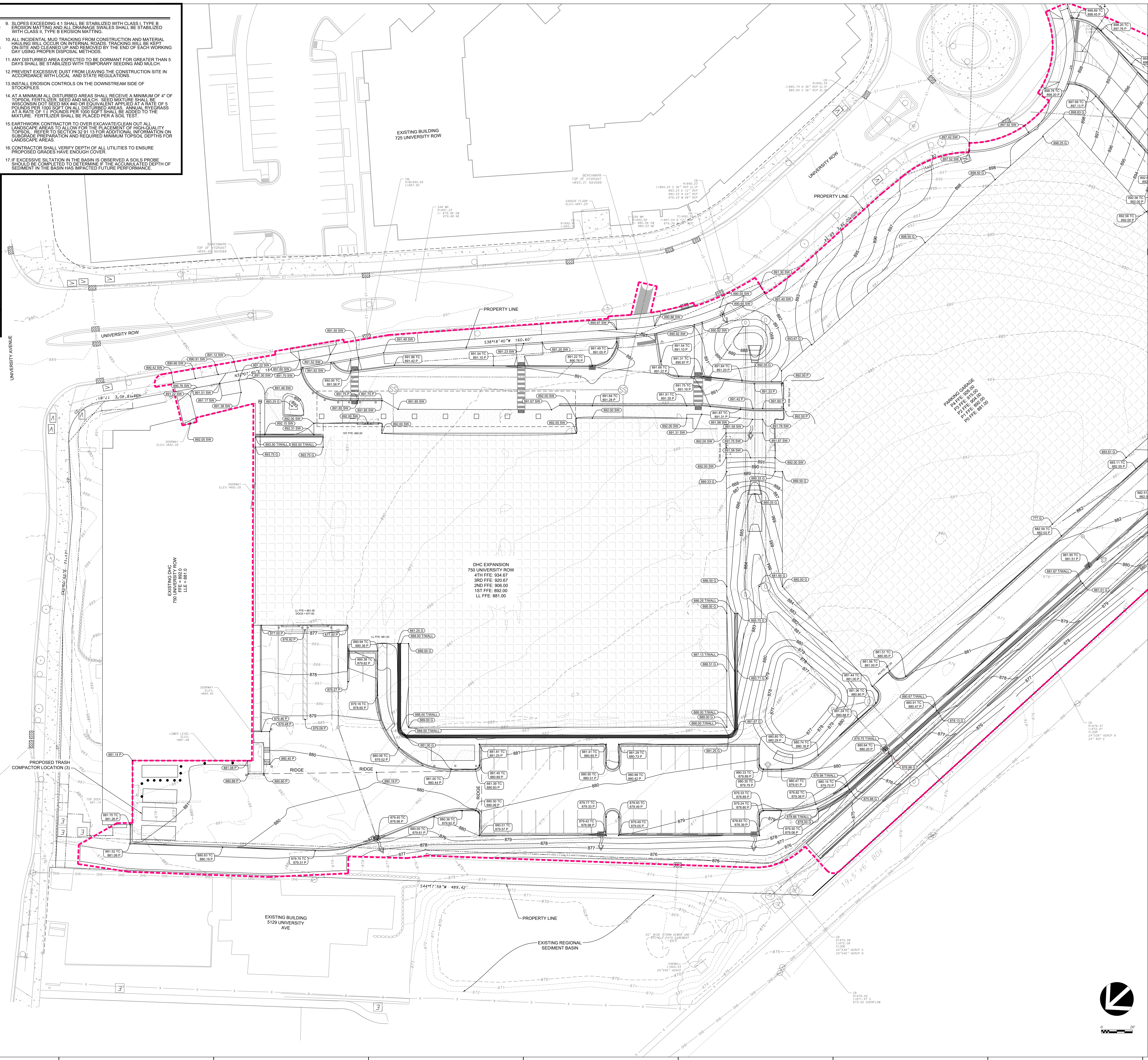
**GRADING AND EROSION CONTROL NOTES:**

- ALL EROSION CONTROL MEASURES SHALL BE CONSTRUCTED AND MAINTAINED BY THE CONTRACTOR IN ACCORDANCE WITH THE WISCONSIN DNR TECHNICAL STANDARDS. IT IS THE CONTRACTOR'S RESPONSIBILITY TO OBTAIN A COPY OF THESE STANDARDS.
- INSTALL EROSION CONTROL MEASURES PRIOR TO ANY SITE WORK INCLUDING GRADING OR DISTURBANCE OF EXISTING SURFACE MATERIALS AS SHOWN ON PLAN. MODIFICATIONS TO SEDIMENT CONTROL DESIGN MAY BE CONDUCTED TO MEET UNFORESEEN FIELD CONDITIONS IF MODIFICATIONS CONFORM TO WDNR TECHNICAL STANDARDS.
- EROSION CONTROL MEASURES INDICATED ON THE PLANS SHALL BE CONSIDERED MINIMUMS. IF DETERMINED NECESSARY DURING CONSTRUCTION ADDITIONAL MEASURES SHALL BE INSTALLED TO PREVENT SEDIMENT FROM LEAVING THE SITE.
- INSPECTIONS AND MAINTENANCE OF ALL EROSION CONTROL MEASURES SHALL BE ROUTINE (ONCE PER WEEK MINIMUM) TO ENSURE PROPER FUNCTION OF EROSION CONTROLS AT ALL TIMES. EROSION CONTROL MEASURES ARE TO BE IN WORKING ORDER AT THE END OF EACH WORK DAY.
- INSPECT EROSION CONTROL MEASURES AFTER EACH 1/2" OR GREATER RAINFALL. REPAIR ANY DAMAGE OBSERVED DURING THE INSPECTION.
- NO SITE GRADING OUTSIDE OF THE LIMITS OF DISTURBANCE.
- EROSION CONTROL MEASURES SHALL BE REMOVED ONLY AFTER SITE CONSTRUCTION IS COMPLETE WITH ALL SOIL SURFACES HAVING AN ESTABLISHED VEGETATIVE COVER.
- CUT AND FILL SLOPES SHALL BE NO GREATER THAN 3:1 WITH THE EXCEPTION OF SLOPES SURROUNDING THE UPSTREAM INLET OF THE CULVERT. AREAS OF 3:1 SLOPES AND NO LONGER THAN 30 FEET CAN BE STABILIZED USING CLASS 1, TYPE-B EROSION MAT OTHERWISE FOLLOW WISDOT FGM 10-S EROSION CONTROL MATRIX.
- SLOPES EXCEEDING 4:1 SHALL BE STABILIZED WITH CLASS 1, TYPE-B EROSION MATTING AND ALL DRAINAGE SWALES SHALL BE STABILIZED WITH CLASS 1, TYPE-B EROSION MATTING.
- ALL INCIDENTAL MUD TRACKING FROM CONSTRUCTION AND MATERIAL HAULING WILL OCCUR ON INTERNAL ROADS. TRACKING WILL BE KEPT ON-SITE AND CLEANED UP AND REMOVED BY THE END OF EACH WORKING DAY USING PROPER DISPOSAL METHODS.
- ANY DISTURBED AREA EXPECTED TO BE DORMANT FOR GREATER THAN 5 DAYS SHALL BE STABILIZED WITH TEMPORARY SEEDING AND MULCH.
- PREVENT EXCESSIVE DUST FROM LEAVING THE CONSTRUCTION SITE IN ACCORDANCE WITH LOCAL AND STATE REGULATIONS.
- INSTALL EROSION CONTROLS ON THE DOWNSTREAM SIDE OF STOCKPILES.
- AT A MINIMUM ALL DISTURBED AREAS SHALL RECEIVE A MINIMUM OF 4" OF TOPSOIL, FERTILIZER, SEED AND MULCH. SEED MIXTURE SHALL BE WISCONSIN DOT SEED MIX #40 OR EQUIVALENT APPLIED AT A RATE OF 5 POUNDS PER 1000 SQ FT ON ALL DISTURBED AREAS. ANNUAL RYEGRASS AT A RATE OF 1:1 SHOULD BE ADDED TO THE MIXTURE. FERTILIZER SHALL BE PLACED PER A SOIL TEST.
- EARTHWORK CONTRACTOR TO OVER EXCAVATED CLEAN OUT ALL LANDSCAPE AREAS TO ALLOW FOR THE PLACEMENT OF HIGH-QUALITY TOPSOIL. REFER TO SECTION 211 FOR ADDITIONAL INFORMATION ON SUBGRADE PREPARATION AND REQUIRED MINIMUM TOPSOIL DEPTHS FOR LANDSCAPE AREAS.
- CONTRACTOR SHALL VERIFY DEPTH OF ALL UTILITIES TO ENSURE PROPOSED GRADES HAVE ENOUGH COVER.
- IF EXCESSIVE SILTATION IN THE BASIN IS OBSERVED A SOILS PROBE SHOULD BE COMPLETED TO DETERMINE IF THE ACCUMULATED DEPTH OF SEDIMENT IN THE BASIN HAS IMPACTED FUTURE PERFORMANCE.

**GRADING PLAN LEGEND**

- PROPOSED CONTOURS
- EXISTING CONTOURS
- DISTURBED AREA
- SPOT GRADE - TOP (BACK) OF CURB
- SPOT GRADE - TOP OF WALL
- SPOT GRADE - FINISH GRADE (PAVEMENT)
- SPOT GRADE - SIDEWALK FINISH GRADE
- SPOT GRADE - GROUND (BOTTOM OF WALL)

**LIMITS OF DISTURBANCE**  
 = 258,830 SQ FT  
 = 5.94 AC



milwaukee | madison | green bay | denver | atlanta  
 333 East Chicago Street  
 Milwaukee, WI 53202  
 (414) 271-5350  
 www.eua.com



D'ONOFRIO KOTKIE AND ASSOCIATES, INC.  
 7530 Westward Way, Madison, WI 53717  
 Phone: 608.833.7510 • Fax: 608.833.1009  
 YOUR NATURAL RESOURCE FOR LAND DEVELOPMENT

**PROJECT INFORMATION**

**750 UNIVERSITY ROW EXPANSION**  
  
 750 University Row  
 Madison, WI 53705

**ISSUANCE AND REVISIONS**

DATE	DESCRIPTION
07/28/2024	LOC & LAND USE
10/21/2024	REVISED LOC & LAND USE

**KEY PLAN**

**SHEET INFORMATION**

**PROGRESS DOCUMENTS NOT FOR CONSTRUCTION**  
 These documents reflect progress and intent and may be subject to change, including additional details. These are not final construction documents and shall not be used for final bidding or construction-related purposes.

PROJECT MANAGER RB  
 PROJECT NUMBER 422291

**GRADING PLAN - NORTH**  
**C401 V2**