

March 7, 2018

3014 Worthington Avenue
Madison, Wisconsin 53714
Parcel No. 071005211017

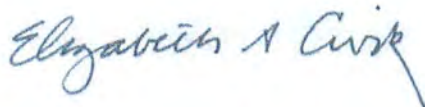
BUILDING CONDITION REPORT

Built in the eighties, 3014 Worthington Ave. is a six unit residential building with a full basement. The poured concrete foundation is partially exposed at grade and is in good condition. Several basement windows are either broken or boarded up; vegetation is growing in the basement window wells. The concrete entry steps and stoops are in fair condition. The structure is wood framed with vinyl and masonry cladding in fair condition. The vinyl windows are at the end of their useful life. The roof (asphalt shingles on wood trusses) and aluminum-clad wood fascia are in poor condition; plastic sheeting covers the deteriorated/leaking sections. There are two egress balconies serving the three upstairs units. These are wood and showing signs of rot. The guards are not code compliant.

The building is unoccupied and the mechanical and plumbing systems are deteriorated and/or non-operational. Cast iron waste pipes are corroded. Ductwork is dismantled in some locations. The electrical system appears to be functioning.

The interior finishes (gypsum board, vinyl composition tile, carpet, wood trim) are extremely worn and missing in some locations.

These assessments are based on exterior observation and interior photos on Wednesday, March 7, 2018.



Elizabeth Cwik, AIA
WI License No. A-8286

Google Maps 3014 Worthington Ave

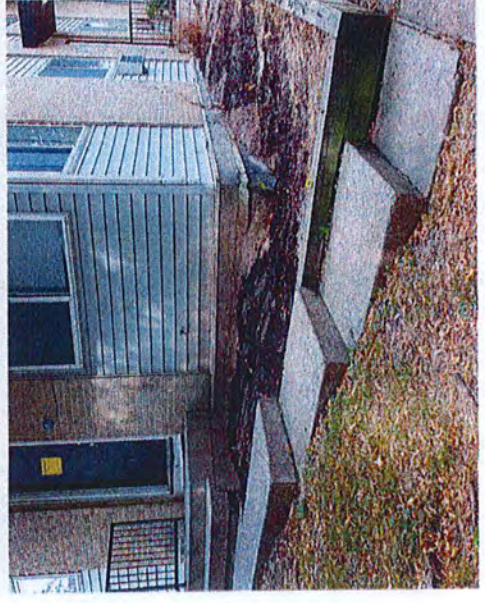
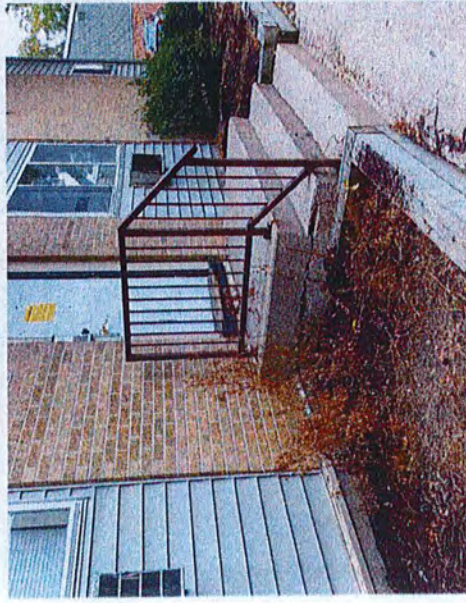
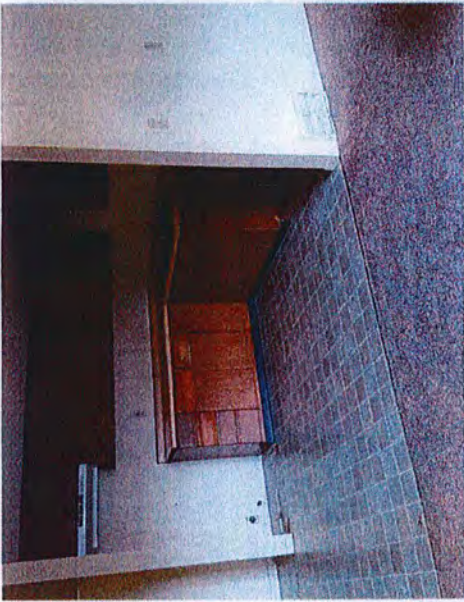


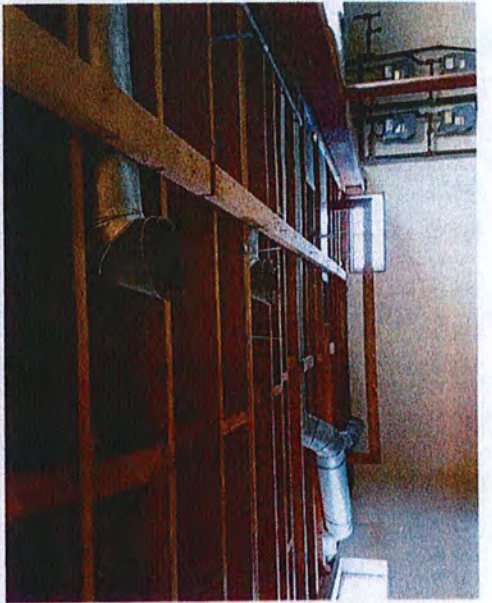
Imagery ©2017 Google, Map data ©2017 Google United States 50 ft



3014 Worthington Ave
Madison, WI 53714







Porchlight tornado damage October 7, 2017:

