

DIMENSION IV - MADISON

Architecture, Engineering and Interior Design

July 17, 2006

Mr. Al Martin
City of Madison
Planning Department
Urban Design Commission
215 Martin Luther King Jr Blvd
Madison, WI 53707

Reference: Lot 90 Midtown Commons
Dimension IV Project No. 06018

Dear Al:

Enclosed are the updated landscape plan, building elevations and site lighting plan for final approval of Lot 90 Midtown Commons at the July 26 meeting.

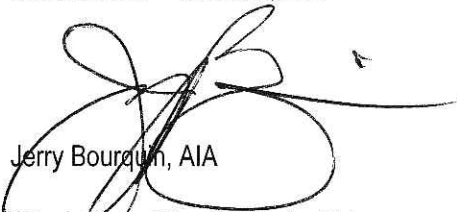
We have incorporated the following enhancements:

1. On the landscape plan additional trees have been added along the south parking lot.
2. Ivy has been added at the building edge along the south elevation to soften the transition of the building to the ground.
3. On the bump outs at the elevations the masonry has been returned around the corners to meet the main wall.
4. The banding on the masonry has been reduced to highlight these vertical elements.
5. On the south elevation:
 - The glass block windows have been increased in size.
 - The garage door has been enhanced to have a panel design.
 - Smooth block banding has been added to break up the lower wall.
 - The split face block will be two colors. The bases of the brick bump outs will be of a red/orange color to blend with the brick walls. The split face at the back walls will be the lighter cream/stone color. This will provide contrast and break up the masonry of the wall.
6. We have also included the site lighting plan. The site lighting is the same fixtures that are used on the adjacent buildings and street.

See you on the 26th. Please call me if you have any questions; 608-229-4444, ext. 18.

Thank you,

Dimension IV - Madison, LLC



Jerry Bourquin, AIA

Attachment: 14 sets of submittal

Description

STRUT enhances the rectilinear form with a housing that blends effortlessly to traditional or ambitious architectural environments. STRUT brings two housing sizes and a fluid form to match the culture in which it resides.

Catalog #		Type	
Project			
Comments		Date	
Prepared by			

SPECIFICATION FEATURES

A ... Housing

Two-piece heavy-wall, die-cast aluminum housing maintains a nominal .125 wall thickness and utilizes continuous silicone gasketing between castings for a forbidding seal. Optional strut rod supports manufactured of machined aluminum attach to housing top with recessed stainless steel fasteners.

B ... Door

Heavy-wall, die-cast aluminum door maintains a nominal .125 thickness. Continuous silicone gasketing provides IP66 compliant optical cavity. Toolless entry to housing is provided via two (2) flush mount quick release latches. Concealed hinging allows door to be removed from housing without the use of tools.

C ... Lens

Impact resistant 1/8" thick tempered clear or optional frosted flat glass for concealment of lamp image.

D ... Optical Systems

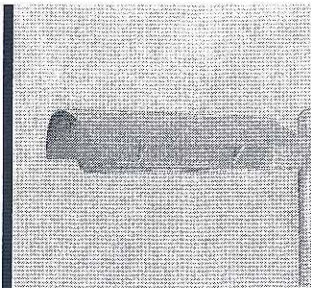
Choice of five (5) high efficiency segmented optical systems constructed of premium 95% reflective anodized aluminum sheet. Optical segments are rigidly mounted inside a thick gauge aluminum housing for superior protection. All segment faces are clean of rivet heads, tabs, or other means of attachment which may cause streaking in the light distribution. All reflector modules feature toolless removal, quick disconnect wiring plugs, and are toolless field rotatable in 90° increments. Medium housing (STM) optics feature mogul-base lampholders for HID lamp sources.

E ... Electrical Tray

Ballast and related electrical components are mounted to a toolless release reinforced one-piece, die-cast aluminum power tray. Quick disconnects allow tray to be completely removed from housing providing ample hand and tool room for attachment of luminaire during installation.

F ... Finish

Housing and arm finished in a 5 stage premium TGIC polyester powder coat paint, 2.5 mil nominal thickness for superior protection against fade and wear. Standard colors include black, bronze, grey, white, dark platinum, and graphite metallic. RAL and custom color matches available. Consult your INVUE Lighting Systems Representative for more information.

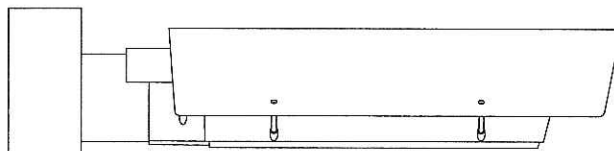


**STM
STRUT
SITE MEDIUM**

114-400W
Metal Halide
Pulse Start Metal Halide
High Pressure Sodium
Compact Fluorescent

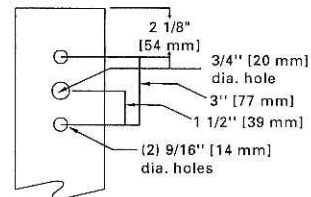
ARCHITECTURAL
AREA LUMINAIRE

**DARK SKY
COMPLIANT** FCO
Full Cutoff



DRILLING PATTERNS

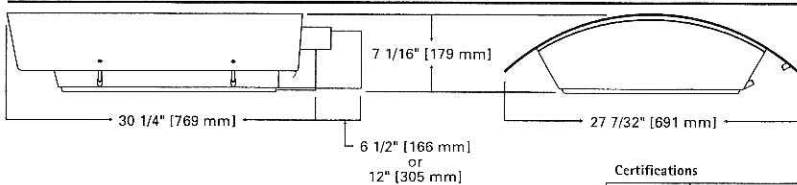
(TYPE "C")



Wattage Table

	STM
Metal Halide	175, 250, 400W
Pulse Start Metal Halide	250, 320, 350, 400W
High Pressure Sodium	150, 250, 400W
Compact Fluorescent	(2) 57, (2) 60W, (2) 70W, (2) 85W, (2) 120W

DIMENSIONS



Certifications

IP66 Rated	U.L. 1598 Listed	3G Vibration Tested	FCO Full Cutoff
CSA Listed	40°C Ambient	ISO 9001	

Shipping DATA (approx.)
Net Weight (lbs.): 51
Volume (cu. ft): 3.18

ORDERING INFORMATION

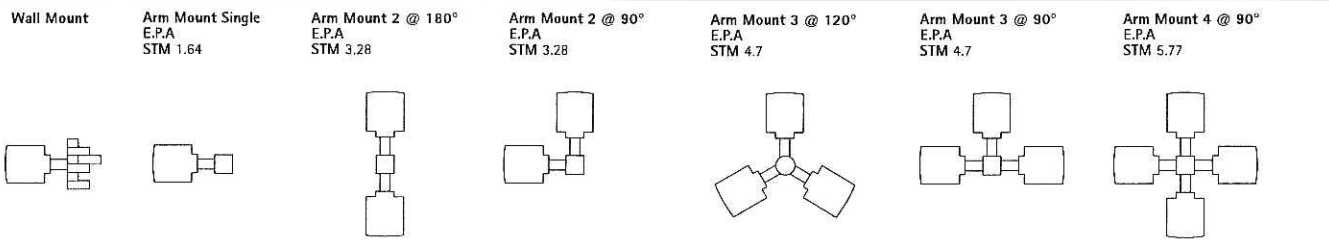
Sample Number: STM-400-MH-MT-3S-BK-STR-L

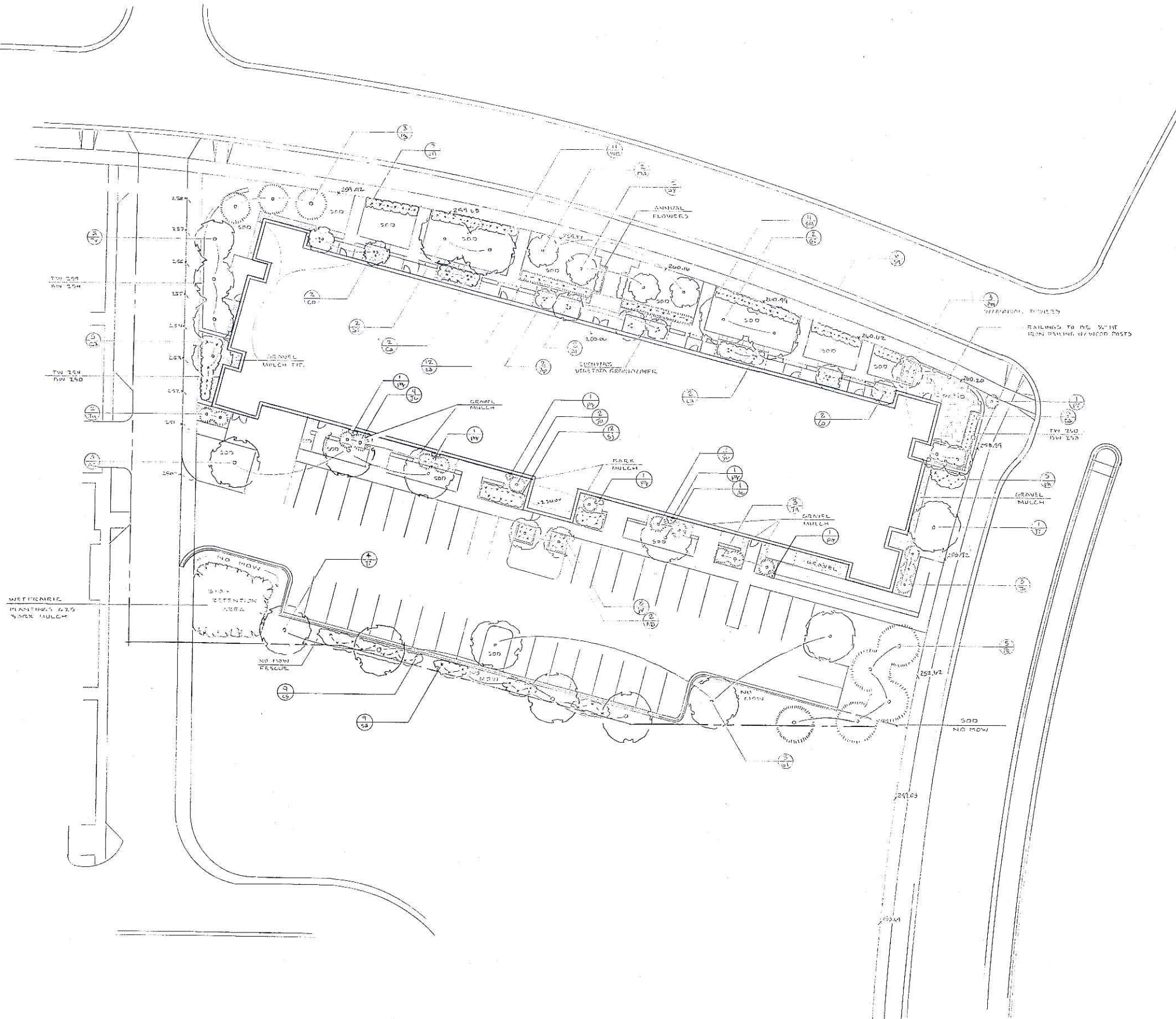


Product Family ¹ STM : STRUT Site Medium	Lamp Type MH : Metal Halide MP : Pulse Start Metal Halide HPS : High Pressure Sodium CF : Compact Fluorescent ⁶	Optical System 2S : Type II 3S : Type III 4S : Type IV 5S : Type V SL : Forward Throw w/ Spill Light Eliminator	Structural Options STR : Strut Rod Supports (Painted to match fixture)	Accessories ¹⁸ OA/RA1016 : NEMA Photocontrol - Multi-Tap OA/RA1027 : NEMA Photocontrol - 480V OA/RA1201 : NEMA Photocontrol - 347V VA1050-XX : Wall Mount Kit w/ 6-1/2" Arm ¹⁷ VA1055-XX : 6-1/2" Arm for Square Pole VA1069-XX : 12" Arm for Square Pole ¹⁸ VA1057-XX : 6-1/2" Arm for Round Pole VA1072-XX : 12" Arm for Round Pole ¹⁸ VA1018-XX : Mast Arm Adapter Kit VA1033-XX : Single-arm Tenon Adapter for 2 3/8" O.D. Tenon VA1034-XX : 2@180° Tenon Adapter for 2 3/8" O.D. Tenon VA1035-XX : 3@120° Tenon Adapter for 2 3/8" O.D. Tenon VA1036-XX : 4@90° Tenon Adapter for 2 3/8" O.D. Tenon VA1037-XX : 2@90° Tenon Adapter for 2 3/8" O.D. Tenon VA1038-XX : 3@90° Tenon Adapter for 2 3/8" O.D. Tenon VA1039-XX : 2@120° Tenon Adapter for 2 3/8" O.D. Tenon VA1040-XX : Single-arm Tenon Adapter for 3 1/2" O.D. Tenon VA1041-XX : 2@180° Tenon Adapter for 3 1/2" O.D. Tenon VA1042-XX : 3@120° Tenon Adapter for 3 1/2" O.D. Tenon VA1043-XX : 4@90° Tenon Adapter for 3 1/2" O.D. Tenon VA1044-XX : 2@90° Tenon Adapter for 3 1/2" O.D. Tenon VA1046-XX : 2@120° Tenon Adapter for 3 1/2" O.D. Tenon VA1045-XX : 3@90° Tenon Adapter for 3 1/2" O.D. Tenon
Lamp Wattage HID ² 150 : 150W 175 : 175W 250 : 250W 320 : 320W ³ 350 : 350W ³ 400 : 400W ⁴ Compact Fluorescent 114 : (2) 57W ⁵ 120 : (2) 60W ⁵ 140 : (2) 70W ⁵ 170 : (2) 85W ⁵ 240 : (2) 120W ⁵	Voltage ⁷ 120 : 120V 208 : 208V 240 : 240V 277 : 277V 347 : 347V 480 : 480V DT : Dual-Tap wired 277V ⁸ MT : Multi-Tap wired 277V ⁹ TT : Triple-Tap wired 347V ¹⁰ UNV : 120-277V Universal Electronic Ballast	Color ¹¹ BK : Black AP : Grey BZ : Bronze WH : White DP : Dark Platinum GM : Graphite Metallic	Options ¹² F : Single Fuse (120, 277 or 347V) Specify Voltage FF : Double Fuse (208, 240 or 480V) Specify Voltage Q : Quartz Restrike ¹³ EM : Quartz Restrike w/ Time Delay ¹³ (Also Strikes at Cold Start) EM/SC : Quartz Emergency Separate ¹³ Circuit R : NEMA Twistlock Photocell Receptacle PC : Button Type Photocontrol (Specify Voltage) DS : Dual Fluorescent Switching Control ¹⁴ HS : House Side Shield ¹⁵ FR : Frosted Flat Glass Lens L : Lamp Included	

- Notes: 1 Arm not included. See accessories.
 2 All HID lamps are mogul-base.
 3 320W and 350W Pulse Start Metal Halide lamps only.
 4 400W Metal Halide requires reduced envelope ED28 lamp.
 5 Dual Compact Fluorescent lamp options available in Type 4S distribution only.
 6 Compact Fluorescent ballasts contain internal fusing. No supplemental fusing is necessary. CF ballasts are 120 through 277V. Specify with UNV voltage designation.
 7 Products also available in non-US voltages and 50Hz for international markets. Consult factory for availability and ordering information.
 8 Dual-tap is 120/277V wired 277V.
 9 Multi-tap is 120/208/240/277V wired 277V.
 10 Triple-tap is 120/277/347V wired 347V.
 11 Custom and RAL color matching available upon request. Consult your INVUE Lighting Systems Representative for further information.
 12 Add as suffix in the order shown.
 13 Quartz options not available with SL optic.
 14 Dual switching requires dual 57W or dual 70W Compact Fluorescent lamps. Allows independent switching control of each lamp through use of two (2) electronic ballasts. Allows 50% power reduction when dual ballasts are independently wired and controlled.
 15 House side shield not available on 5S and SL optics.
 16 Order separately, replace XX with color suffix.
 17 For use in down lighting applications only.
 18 Use when mounting fixture heads at 90° increments.

MOUNTING VARIATIONS





Planting Schedule for Parcel A, Lot 90, Mid Town Commons
As per Landscape Plan Revised 7-19-06
Ziegler Design Associates

Deciduous Canopy Trees

Sym.	Qty.	Size	Rt Cond	Botanical Name, Common Name
Ac	4	2" cal	B&B	<i>Acer freemanii</i> , Armstrong Red Maple
Gi	4	2" cal	B&B	<i>Ginkgo biloba</i> , Male Ginkgo
Gl	4	2" cal	B&B	<i>Gleditsia triacanthos</i> , Honeylocust
Ti	4	2" cal	B&B	<i>Tilia x 'Redmond'</i> , Redmond Linden

Evergreen Trees

Sym.	Qty.	Size	Rt Cond	Botanical Name, Common Name
Jc	6	5'	B&B	<i>Juniperus chinensis 'Hooks #6'</i> , Hooks Juniper
Ju	7	5'	B&B	<i>Juniperus chinensis 'Mountbatten'</i> , Mountbatten Juniper
Pg	3	5'	B&B	<i>Picea glauca 'Densata'</i> , Black Hills Spruce
Pl	1	36"	B&B	<i>Pinus aristata</i> , Bristlecone Pine
Ps	4	5'	B&B	<i>Pinus strobus</i> , White Pine
Th	3	5'	B&B	<i>Thuja occidentalis 'Nigra'</i> , Dark Green Arborvitae

Deciduous Small Trees

Sym.	Qty.	Size	Rt Cond	Botanical Name, Common Name
Ap	2	4-5'	B&B	<i>Acer palmatum</i> , 'Bloodgood' Japanese Maple
Al	2	6'	B&B	<i>Amelanchier laevis</i> , Allegheny Serviceberry
Am	3	2" cal	B&B	<i>Amelanchier laevis</i> , 'Cumulus' Serviceberry
Ca	4	5'	B&B	<i>Carpinus caroliniana</i> , Muscledwood
Co	4	5'	B&B	<i>Cornus alternifolia</i> , Pagoda Dogwood
Ma	4	2" cal	B&B	<i>Malus x species</i> , Prairiefire Crabapple
Py	4	2" cal	B&B	<i>Pyrus calleryana</i> , Bradford Pear
Sy	2	2" cal	B&B	<i>Syringa reticulata</i> , Japanese Tree Lilac

Deciduous Shrubs

Sym.	Qty.	Size	Rt Cond	Botanical Name, Common Name
cs	9	24-30"	cont	<i>Cornus sericea</i> , Bailey Redwig Dogwood
ea	5	36"	B&B	<i>Euonymus alatus</i> , Burning Bush
ph	5	24-30"	cont	<i>Physocarpus opulifolius 'Diablo'</i> , Diablo Ninebark
sa	9	24-30"	cont	<i>Sambucus canadensis</i> , Elderberry
sj	12	18-24"	cont	<i>Spiraea japonica</i> , 'Anthony Waterer' Spirea
sn	16	24"	cont	<i>Spiraea nipponica</i> , 'Snowmound' Spirea
sm	11	24"	cont	<i>Syringa meyeri 'Palibin'</i> , DWf. Korean Lilac
we	11	18"	cont	<i>Weigela florida</i> , Dark Horse Weigela

Evergreen Shrubs

Sym.	Qty.	Size	Rt Cond	Botanical Name, Common Name
eu	50	1 gal	cont	<i>Euonymus fortunei 'Vegetus'</i> , Big Leaf Wintercreeper
iv	8	15-18"	cont	<i>Juniperus virginiana 'Gray Owl'</i> , Grey Owl Juniper
ta	12	18-24"	B&B	<i>Taxus x media 'Tauntonii'</i> , Taunton Yew

Grasses, Forbs and Vines

Sym.	Qty.	Size	Rt Cond	Botanical Name, Common Name
pd	6	2 gal	cont	<i>Parthenocissus quinquefolia 'Engelmannii'</i> , Engelmann Ivy
-	625	plug	cont	Assorted wet prairie species

Field Notes

- LAWN AREAS**
- All lawn areas and tree way area to be sod.
 - All disturbed areas to the south of parking to be no-mow fescue seed mix.
- MULCHES**
- All individual trees and shrub beds to receive bark mulch unless otherwise specified.
 - All bark mulch to be shredded hardwood, 3" minimum depth.
 - All gravel mulch to be 3/4" clear Dresser Trap Rock or equivalent; 3" depth minimum on weed barrier fabric with plastic edging as needed.
- WALLS**
- All walls to be modular concrete block, Keystone, Versa-Lok or equivalent.

Landscape Worksheet and Plant Points
As per Landscape Plan Revised 7-19-06
Ziegler Design Associates

Element	Point Value	Quantity	Points Achieved	Number required
Canopy Tree: 2"-2 1/2" cal.	35	11	280	3
Deciduous Shrub	2	30	60	
Evergreen Shrub	3	8	24	
Decorative Wall or Fence	5	-	-	
Earth Berm	5 or 2	-	-	193
Evergreen Trees	15	21	315	
Canopy Tree or Small Tree: 1 1/2"-2" cal.	15	2	30	
Totals				709



PARCEL A, LOT 90
MID TOWN COMMONS
Landscape Planting Plan
Mayo Drive and Waldorf Blvd., Madison, WI

ZIEGLER DESIGN ASSOCIATES
4697 Capitol View Road
Middleton, WI 53562
608.831.5098
Drawn by: SGZ/MLG 7-19-06
REVISED: 7-17-06

Drawing Scale: 1" = 20'-0"

0 10' 20' 40' NORTH

DIMENSION IV MADISON

Architecture
Engineering
Interior Design

313 West Beltline Hwy., Suite 161
Madison, WI 53713
phone (608) 229-4444 fax (608) 229-4445

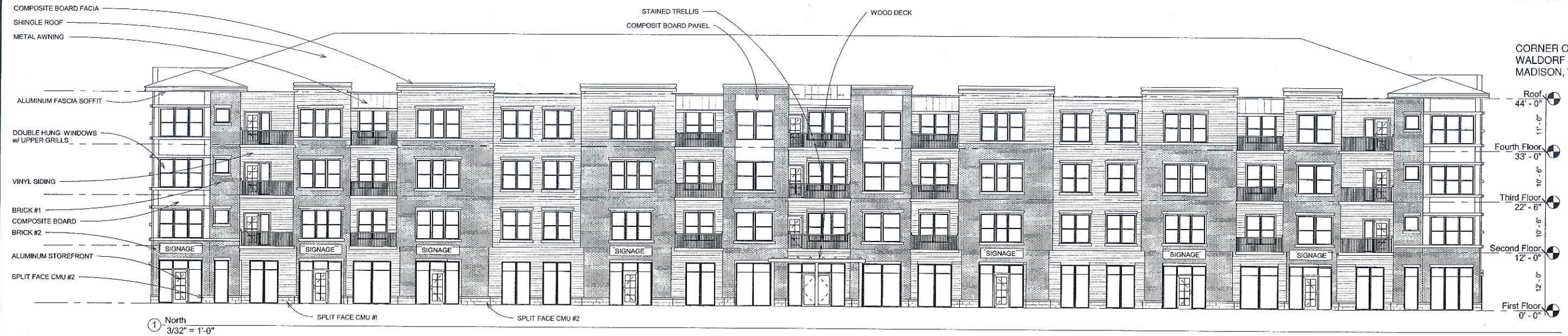
CONSULTANTS:

LOT 90 MIDTOWN

CORNER OF MAYO DRIVE &
WALDORF BLVD
MADISON, WI 53719



② South
3/32" = 1'-0"



① North
3/32" = 1'-0"



③ West
3/32" = 1'-0"



④ East
3/32" = 1'-0"

DATE OF ISSUE: JUNE 14 2006

REVISIONS:	

PROJECT # 06018

Exterior Elevations

LitePRO 2.017 lighting design software

CALCULATION SUMMARY										
AREA NAME	DIMENSIONS	GRID / TYPE	# PTS	SPAC	GROUP	AVE	MAX	MIN	MAX/MIN	AVE/MIN
Entire Site	495.00x705.00ft	Parking / H-H	413	10.00	<+>	1.20	2.89	0.28	10.48	4.34
			175	10.00	<*>	1.07	2.74	0.13	21.41	8.39

LUMINAIRE SCHEDULE						
TYP	SYMBOL	DESCRIPTION	LAMP	LUMENS	MOUNTING/BALLAST	LLF QTY
SPA	⊕	COOPER LIGHTING (1) "254" STM-250-MH-X(1)4S	X(1)4S	14000		0.90 9
SRA	⊕	COOPER LIGHTING (1) "252" STM-250-MH-X(1)2S	X(1)2S	14000		0.90 4

Calculations completed for:
Madison Electric INC.
Contact: Ed @ (608)669-1971

Calculations completed by:
Enterprise Lighting LTD.
Contact: Dustin Blotz @ (608)838-7555

Additional Lighting Specifications and Notes:
1. Lighting calculations represent proposed lighting levels using the fixtures as specified below. Selection of a different product family will require a revision of these calculations.

2. Complete fixtures model numbers shall be:
SPA STM-175WMHMT-4S-COLOR-L/VA1055-COLOR
SRA STM-175WMHMT-2S-COLOR-L/VA1055-COLOR

Fixtures shall be installed on 25-foot square steel poles. Poles shall be painted to match.

