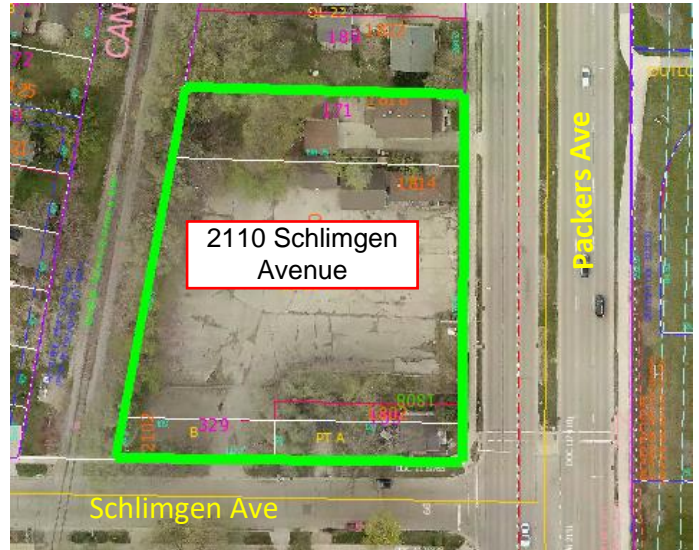


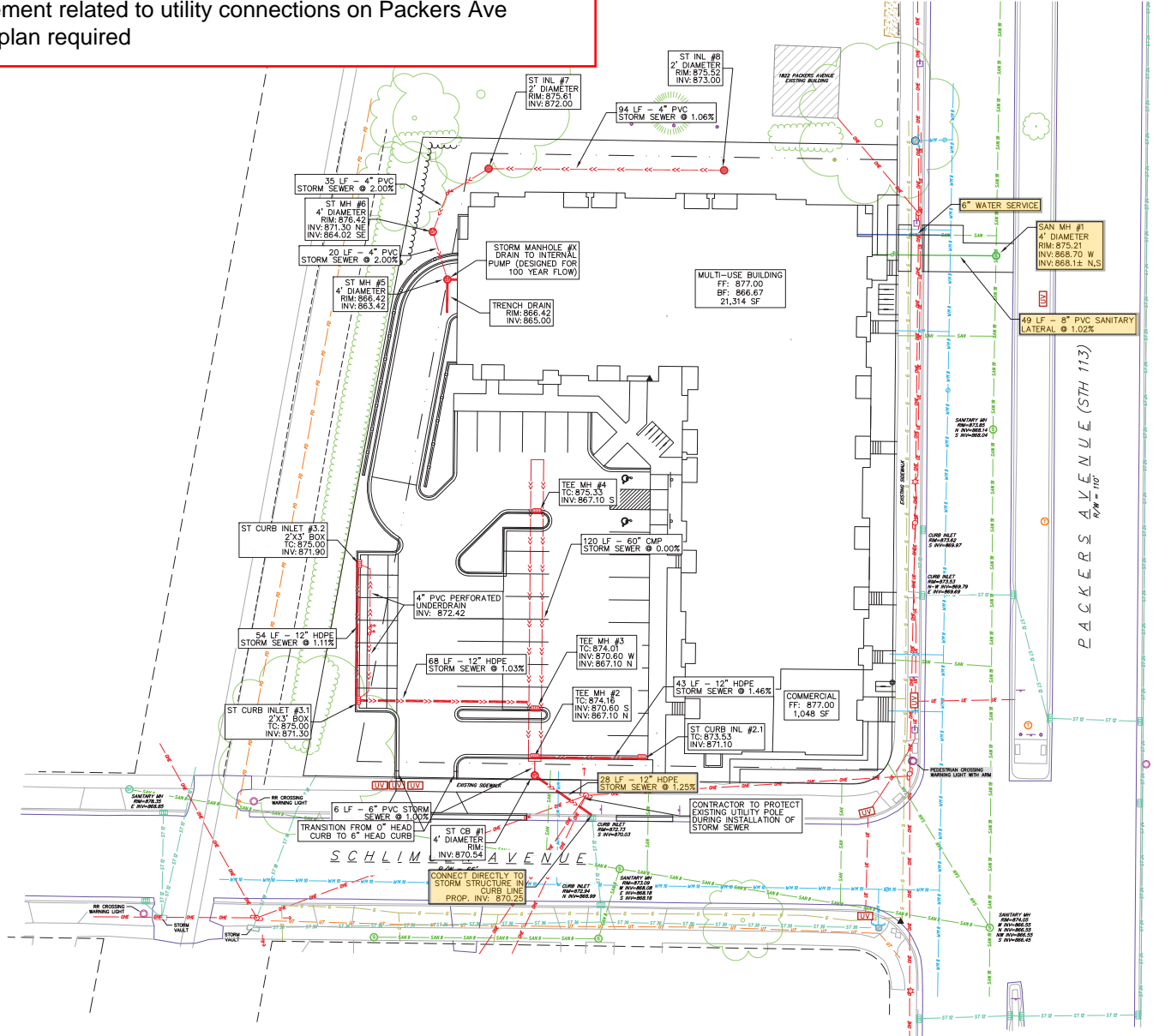
2110 SCHLIMGEN AVENUE
Project: 14242 Contract: 9194
Entity: Odessa Affordable Housing, LLC



Work Covered By Developer Agreement:

- Private lateral sewer plug permits
- Removal and replacement of concrete pavement, curb/gutter, driveway aprons, and sidewalk
- Plant four new terrace trees on Schlimgen Avenue
- Private water and sanitary sewer lateral connections into mains on Packers Avenue
- Install 48" sanitary sewer manhole on Packers Avenue
- Driveway apron on Schlimgen Avenue
- Traffic control with special attention to lane closures on Packers Avenue for utility installation
- Lighting, signing, and marking as required by Traffic Engineering

UTILITY WORK IN PUBLIC RIGHT OF WAY
 Private storm lateral connection into existing inlet on Schlimgen Ave
 Private water and sanitary later connections into mains on Packers Ave
 Installation of 4' sanitary manhole on Packers Ave
 Concrete pavement related to utility connections on Packers Ave
 Traffic control plan required



PROPOSED UTILITY LEGEND	
	STORM SEWER PIPE
	STORM SEWER MANHOLE
	STORM SEWER FIELD INLET
	STORM SEWER CURB INLET
	STORM SEWER CLEANOUT
	SANITARY SEWER LATERAL PIPE
	SANITARY SEWER MANHOLE
	SANITARY SEWER CLEANOUT
	WATER SERVICE LATERAL PIPE

knothe + bruce
 ARCHITECTS
 Phone: 7601 University Ave. Ste 201
 488.836.3690 Madison, WI 53542

CONSULTANT
vierbicher
 planners | engineers | architects
 Phone: (608) 261-0898

ISSUED
 Issued for Land Use & UDC - May 20, 2020
 Revised for Land Use & UDC - July 17, 2020
 Issued for Review - October 29, 2020
 Issued for Review - November 24, 2020
 Issued for Review - February 4, 2022
 Site Plan Review Submittal - February 23, 2022

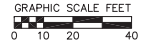
PROJECT TITLE
Avenue Square Apartments
 LNDUSE-2020-00067

2110 Schlimgen Ave.
 Madison, Wisconsin
 SHEET TITLE
Utility Plan

SHEET NUMBER

C-5.0
 PROJECT NO. 1973
 © Knothe + Bruce Architects, LLC

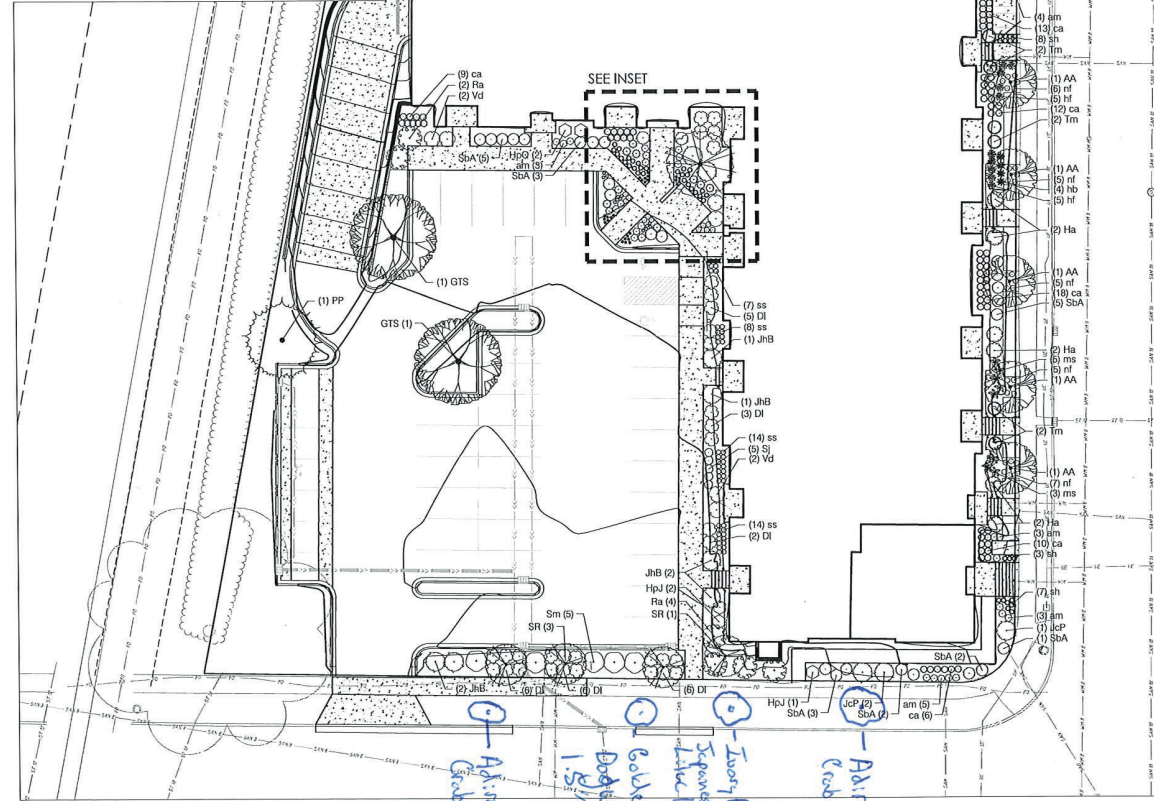
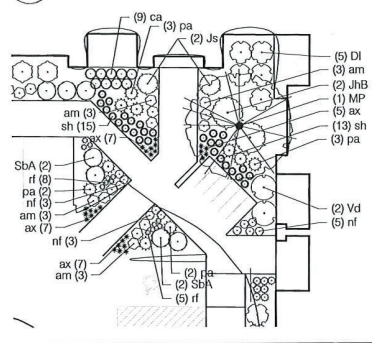
1 UTILITY PLAN
 C-5.0 1" = 20'-0"



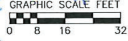
NOT FOR CONSTRUCTION

NEW TREE PLANTING REQUIRED ON PACKERS AVE
Adirondack Crab 1.5" (2)
Golden Glory Dogwood 1.5"
Ivory Pillar Japanese Lilac 1.5"

2 ENTRANCE AREA DETAIL
 L-1.1 1" = 10'-0"



1 LANDSCAPE PLAN
 L-1.1 1" = 16'-0"



Handwritten notes:
 Adirondack Crab 1.5"
 Dogwood 1.5"
 Golden Glory 1.5"
 Ivory Pillar Japanese Lilac 1.5"
 Adirondack Crab 1.5"

PLANT SCHEDULE

DECIDUOUS TREES	BOTANICAL / COMMON NAME	ROOT COND.	SIZE	NOTES	QTY
AA	Acer x freemanii 'Armstrong' / Armstrong Freeman Maple	B & B	7' Cal		2
GTS	Gleditsia tricanthos Inermis 'Shademaster' TM / Shademaster Locust	B & B	2.5' Cal		2
EVERGREEN TREES	BOTANICAL / COMMON NAME	ROOT COND.	SIZE	NOTES	QTY
FP	Picea pungens / Colorado Spruce	B & B	6" TL		1
TC	Taxus canadensis / Canadian Hemlock	B & B	6" TL		3
UNDERSTORY TREES	BOTANICAL / COMMON NAME	ROOT COND.	SIZE	NOTES	QTY
AL	Araliancher laevis / Allegheny Serviceberry	B & B	7" TL	Multi-Stem	1
MP	Malus x 'Prunkle Post' / Prunkle Post Crabapple	B & B	2' Cal		1
SR	Syringa reticulata 'Ivory Silk' / Ivory Silk Japanese Tree Lilac	B & B	2' Cal		5
DECIDUOUS SHRUBS	BOTANICAL / COMMON NAME	ROOT COND.	SIZE	NOTES	QTY
DI	Dierfilla loricata / Dwarf Bush Honeysuckle	Con.	3 Gal.		33
Ha	Hydrangea arborescens 'Incrediball' / Incrediball White Hydrangea	Con.	5 Gal.		6
HpJ	Hydrangea paniculata 'Jazz' TM / Little Lime Hydrangea	Con.	5 Gal.		3
HqQ	Hydrangea paniculata 'Little Quick Fire' / Little Quick Fire Hydrangea	Con.	5 Gal.		2
RH	Rhus aromatica 'Cora-Lov' / Cora-Lov Fragrant Sumac	Con.	5 Gal.		6
SJ	Spiraea japonica 'Magic Carpet' / Magic Carpet Spiraea	Con.	3 Gal.		5
SbA	Spiraea x bumalda 'Anthony Waterer' / Anthony Waterer Spiraea	Con.	3 Gal.		25
Sm	Spiraea meyeri 'Patrol' / Dwarf Korean Lilac	Con.	2' Cal		5
Vd	Viburnum dentatum 'Little Joe' / Little Joe Viburnum	Con.	5 Gal.		6
EVERGREEN SHRUBS	BOTANICAL / COMMON NAME	ROOT COND.	SIZE	NOTES	QTY
XP	Juniperus chinensis 'Plazmora Compacta' / Compacta Plizer Juniper	Con.	5 Gal.		3
JhB	Juniperus horizontalis 'Blue Chip' / Blue Chip Juniper	Con.	5 Gal.		8
JF	Juniperus sabinna 'Blue Forest' / Blue Forest Juniper	Con.	5 Gal.		2
Tm	Taxus media 'Everlow' / Everlow Yew	Con.	5 Gal.		11
PERENNIALS	BOTANICAL / COMMON NAME	ROOT COND.	SIZE	NOTES	QTY
AK	Allium x 'Summer Beauty' / Summer Beauty Allium	Con.	4 in		26
Am	Anemone x 'Blue Ice' / Blue Ice Anemone	Con.	4 in		33
Ca	Calamagrostis x acutiflora 'Karl Foerster' / Feather Reed Grass	Con.	1 Gal.		98
ms	Hosta x 'Blue Cadet' / Flurish Lil	Con.	1 Gal.		10
Hf	Hosta x 'Frances' / Flurish Lil	Con.	1 Gal.		10
nb	Helleborus struthiofolius / Ostich Fern	Con.	1 Gal.		13
nf	Neptuca x fassenii 'Walkers Low' / Walkers Low Catmint	Con.	4 in		39
pa	Parosela angustifolia 'Little Spire' / Little Spire Russian Sage	Con.	1 Gal.		10
rf	Rudbeckia huldga 'Goldsturm' / Goldsturm Coneflower	Con.	1 Gal.		13
sh	Schizanthus scapularium / Little Bluestem Grass	Con.	1 Gal.		5
sh	Sporobolus heterolepis / Prairie Dropseed	Con.	1 Gal.		52

GENERAL NOTES:

- All plantings shall conform to quality requirements as per ANSI Z60.1.
- All plant material shall be true to the species, variety and size specified, nursery grown in accordance with good horticultural practices, and under climatic conditions similar to those of the project's site.
- Contact Landscapes Architect in writing, to request and plant material substitutions due to availability issues.
- All disturbed areas, unless otherwise noted, to be seeded with Madison Parks Mix by LaCrosse Seed Company or equivalent, per manufacturer's specified application rates. All seeded areas are to be watered daily to maintain adequate soil moisture for proper germination. After vigorous growth is established, apply 1/2" water twice weekly until final acceptance.
- All plants shall be guaranteed to be in healthy and flourishing condition during the growing season following installation. All plant material shall be guaranteed for one year from the time of installation.
- Contractor shall provide a suitable amended topsoil bed for all planting areas where soil conditions are unsuitable for plant growth. Topsoil shall conform to quality requirements as per Section 625.2(1) of the Standard Specifications for Highway Construction. Provide a minimum of 12" of topsoil in all planting areas and 6" of topsoil in areas to be seeded/sodded.
- Landscape beds to be mulched with undyed shredded hardwood bark mulch to 3" depth min. and edged with commercial grade aluminum landscape edging, Permatoc CleanLine 6" x 4" or equal, color black anodized.

City of Madison Landscape Worksheet							
Address:	1814 Packers Ave		Date:	02.04.2022			
Total Square Footage of Developed Area:	(Site Area)	53760	(Building Footprint at Grade)	21,500	=	32260	if
Total Landscape Points Required (<45 ac):	32,260 / 300 =	108	x 5 =	538	538		
Landscape Points Required >5 ac:		0 / 100 =	0	x 1 =	0		
		Credits/ Existing Landscaping	New/ Proposed Landscaping				
Plant Type/ Element	Min. Size at Installation	Points	Quantity	Points Achieved	Quantity	Points Achieved	
Overstory deciduous tree	2.5' cal	35	0	7	245		
Tall Evergreen Tree	5-6 feet tall	35	0	4	140		
Ornamental tree	1.5' cal	15	0	6	90		
Upright evergreen shrub	3-4 feet tall	10	0	0	0		
Shrub, deciduous	#3 gallon container size, Min. 12-24"	3	0	91	273		
Shrub, evergreen	#3 gallon container size, Min. 12-24"	4	0	24	96		
Ornamental grasses/perennials	#1 gallon container size, Min. 8-18"	2	0	254	508		
Ornamenta/decorative fencing or wall	n/a	4 per 10 LF	0	0	0		
Existing significant specimen tree	Min. Size 2.5' cal. Trees must be within developed area and cannot comprise more than 30% of total required points.	14 per caliper inch. Max. points per tree: 200	0	0	0		
Landscape Furniture for public seating and/or transit connections	Furniture must be within developed area, publicly accessible, and cannot comprise more than 5% of total required points	5 points per "seat"	0	0	0		
Sub Totals			0	1352	1352		
		Total Points Provided:		1352			



ISSUED
 Issued for Land Use & HDC - May 20, 2020
 Revised for Land Use & UDC - July 17, 2020
 Issued for Review - October 25, 2020
 Issued for Review - November 24, 2020
 Issued for Review - February 4, 2022
 Site Plan Review Schedule - February 23, 2022

PROJECT TITLE
Avenue Square Apartments
 LDNUSE-2020-00067



2110 Schlimgen Ave.
 Madison, Wisconsin
SHEET TITLE
Landscape Plan

SHEET NUMBER

L-1.1

NOT FOR CONSTRUCTION

PROJECT NO. 1973
 ©Knothe + Bruce Architects, LLC