

MADISON - JOHNSON & BROOM

UDC INFORMATIONAL PRESENTATION R1

AUGUST 16, 2023

CORE
MADISON BROOM, LLC

vierbicher
planners | engineers | advisors



site

ANTUNOVICH
ASSOCIATES
ARCHITECTURE · PLANNING · INTERIOR DESIGN

Chicago • Washington, D.C. • Los Angeles • antunovich.com



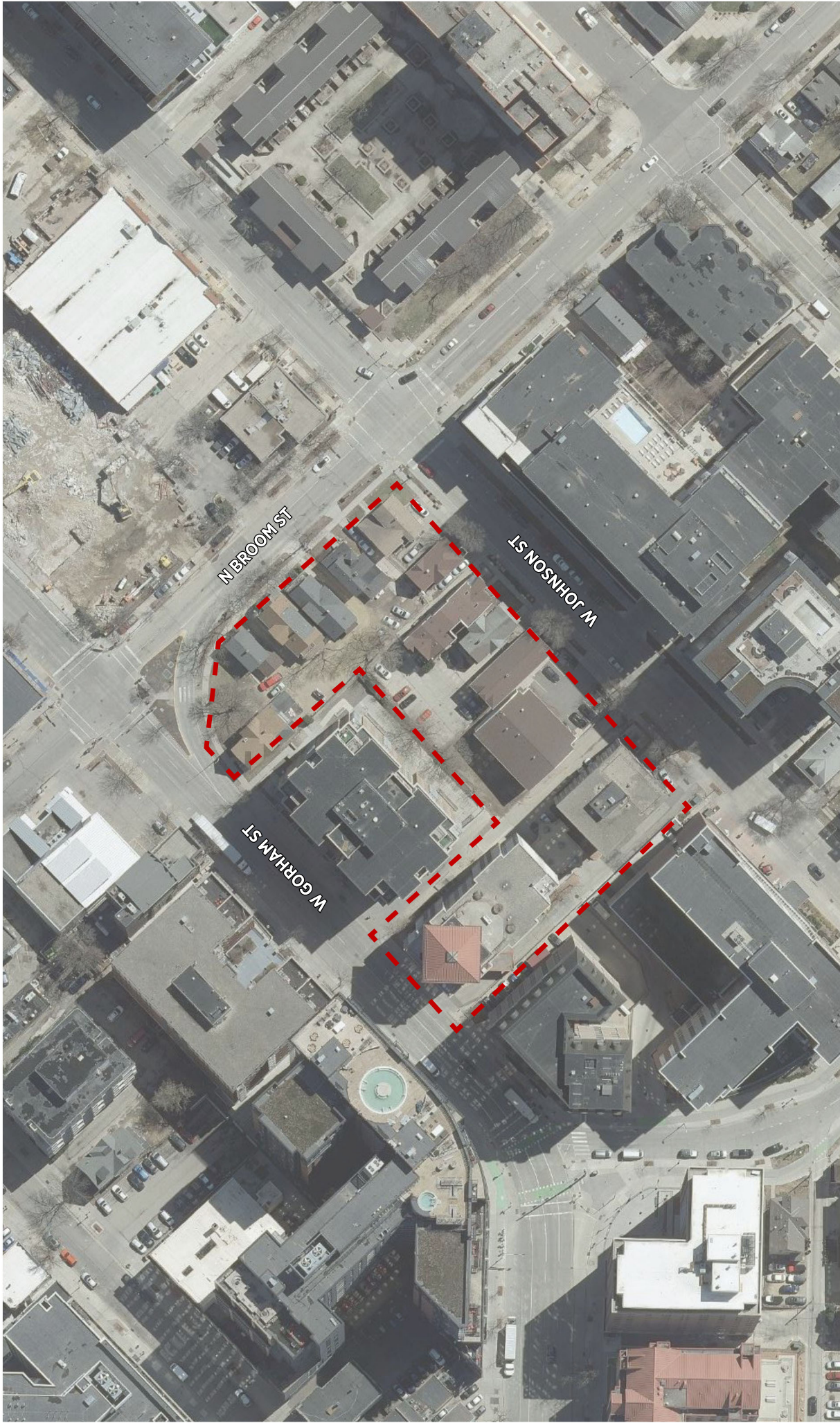
MADISON - JOHNSON & BROOM

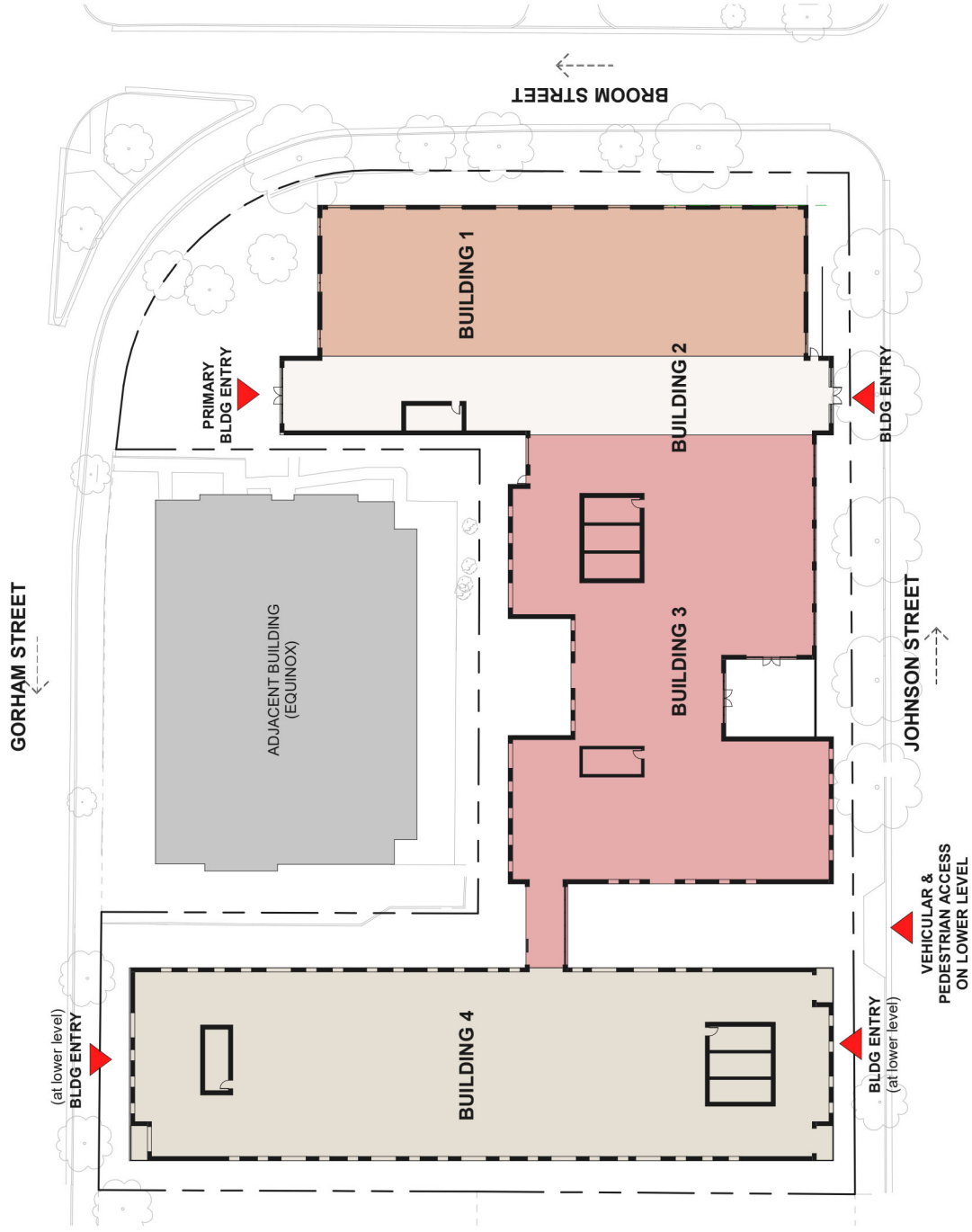
ANTUNOVICH ASSOCIATES • ARCHITECT • CORE MADISON BROOM, LLC • DEVELOPER

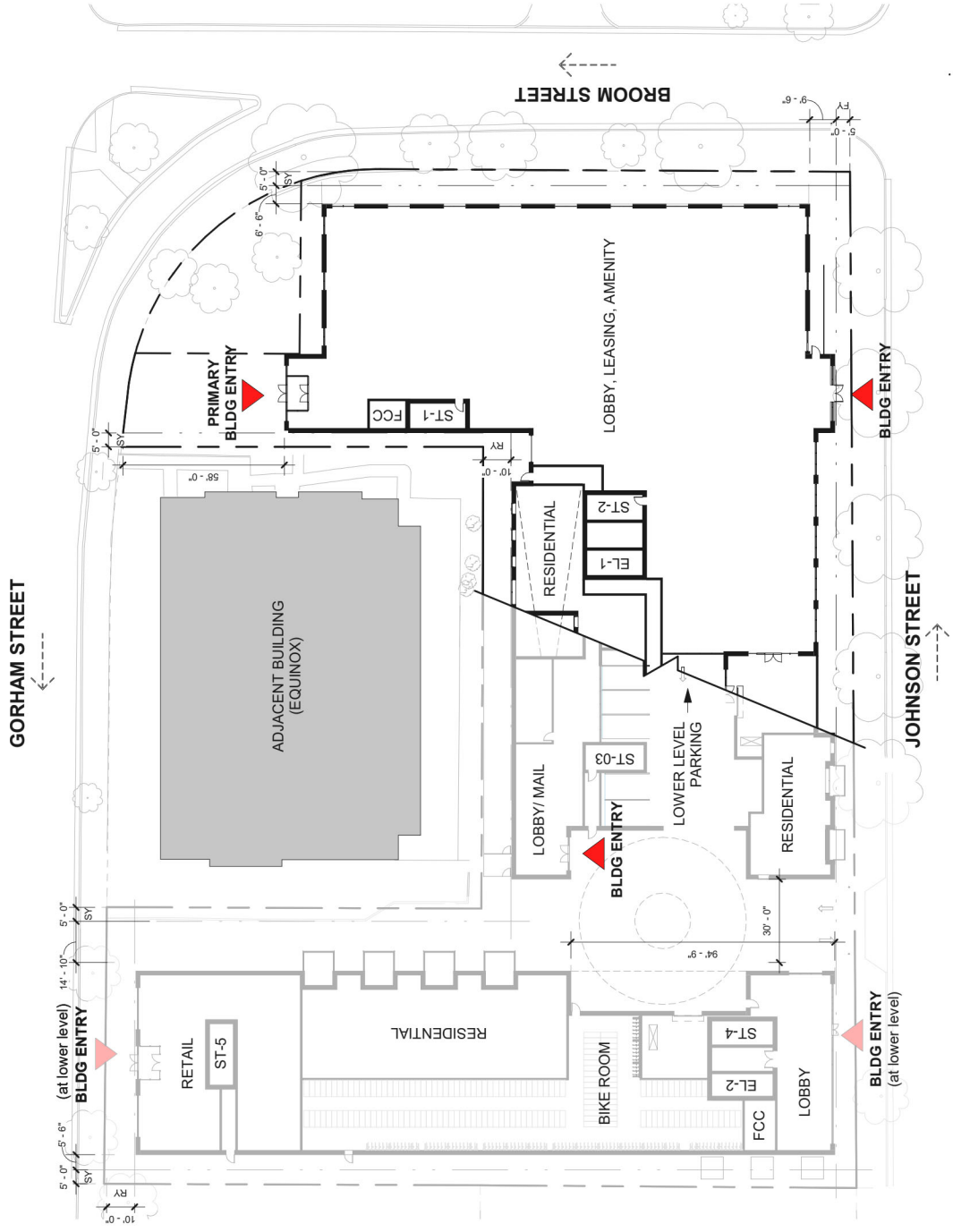
UDC INFORMATIONAL PRESENTATION R1

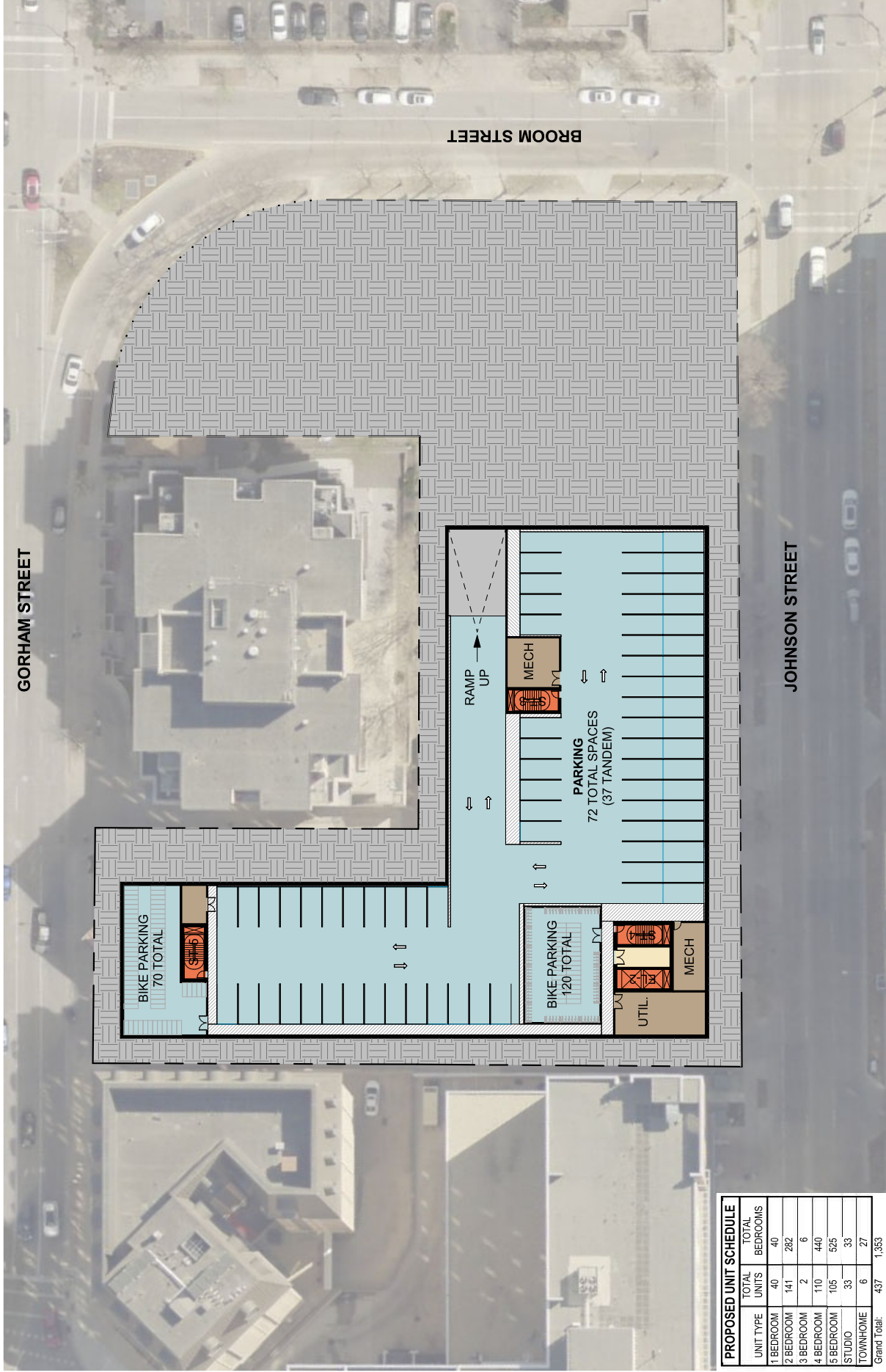
AERIAL PERSPECTIVE LOCATION MAP

MADISON, WISCONSIN • AUGUST 16, 2023









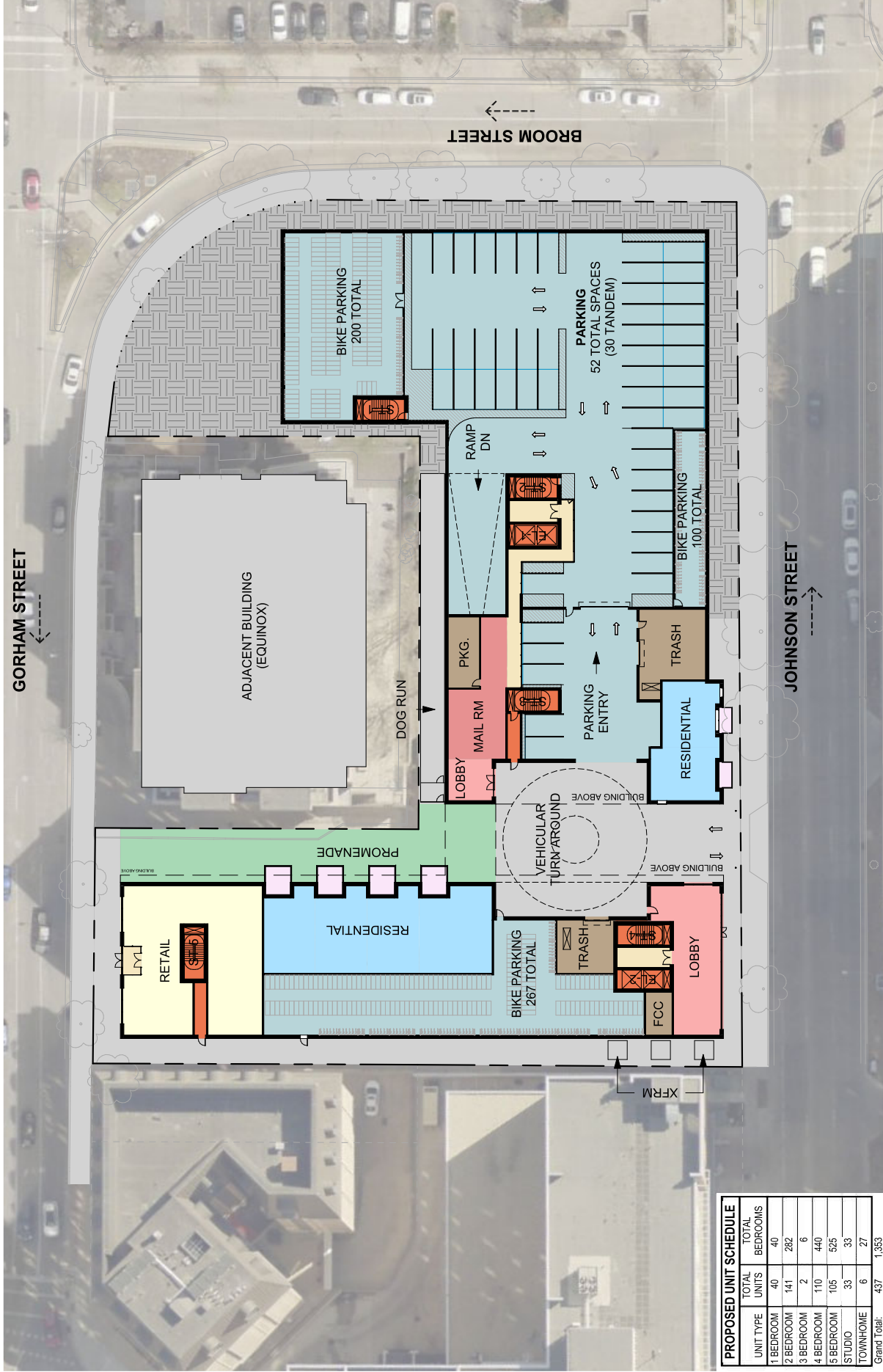
PROPOSED UNIT SCHEDULE		
UNIT TYPE	TOTAL UNITS	TOTAL BEDROOMS
1 BEDROOM	40	40
2 BEDROOM	141	282
3 BEDROOM	2	6
4 BEDROOM	110	440
5 BEDROOM	105	525
STUDIO	33	33
TOWNHOME	6	27
Grand Total:	437	1,353

GORHAM STREET

BROOM STREET

JOHNSON STREET

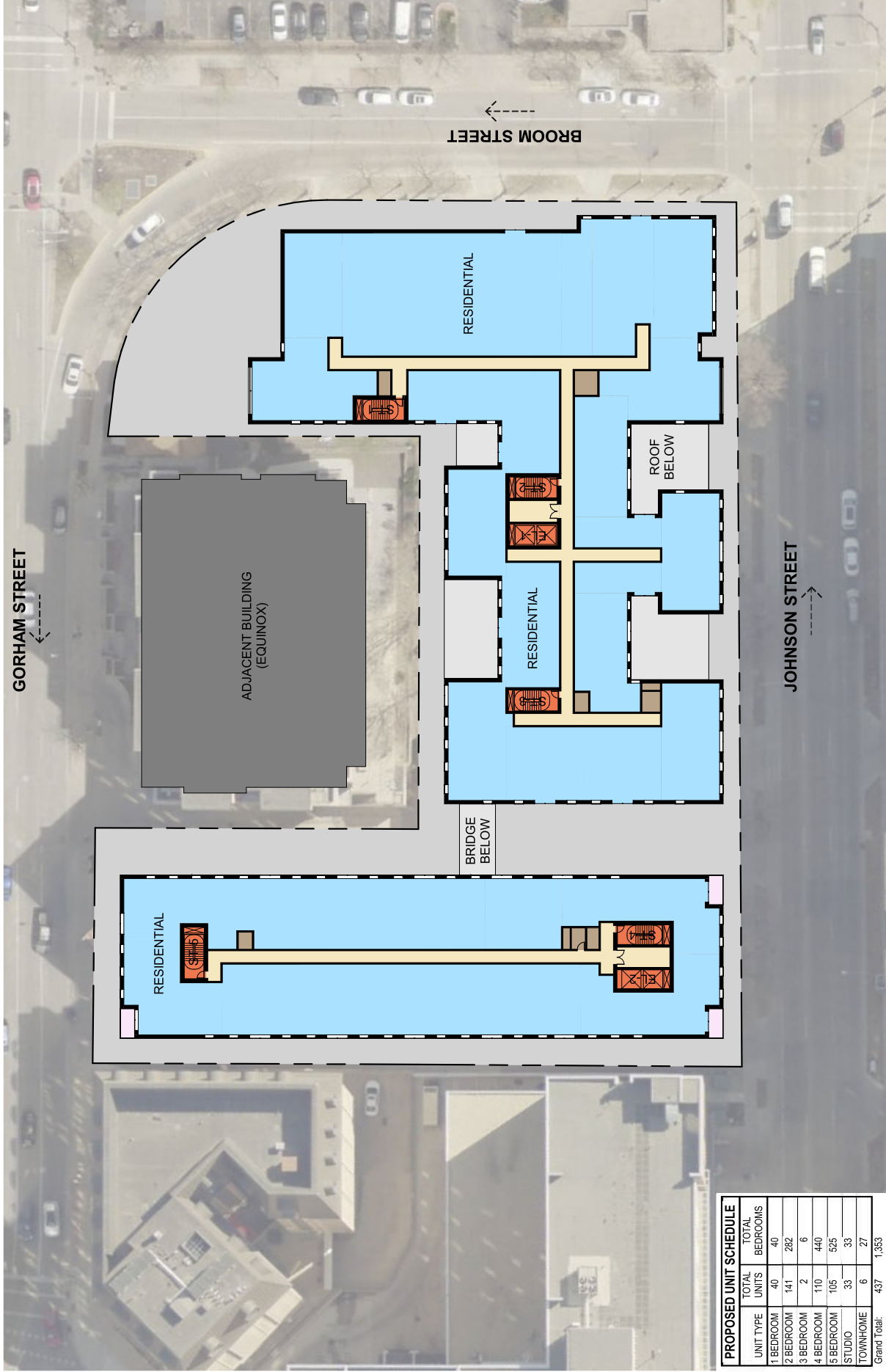




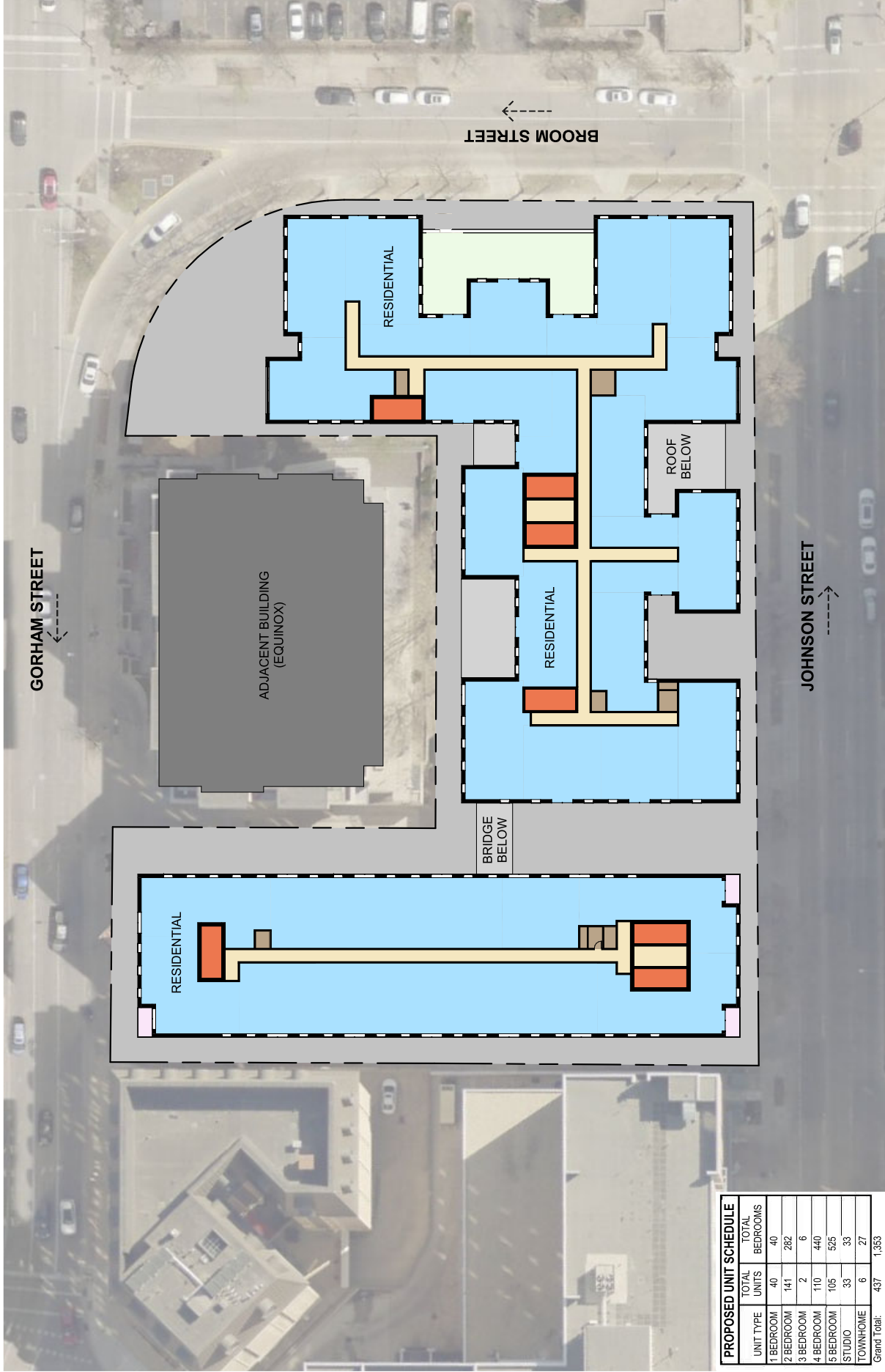
PROPOSED UNIT SCHEDULE	
UNIT TYPE	TOTAL UNITS
1 BEDROOM	40
2 BEDROOM	141
3 BEDROOM	2
4 BEDROOM	110
5 BEDROOM	105
STUDIO	33
TOWNHOME	6
Grand Total:	437



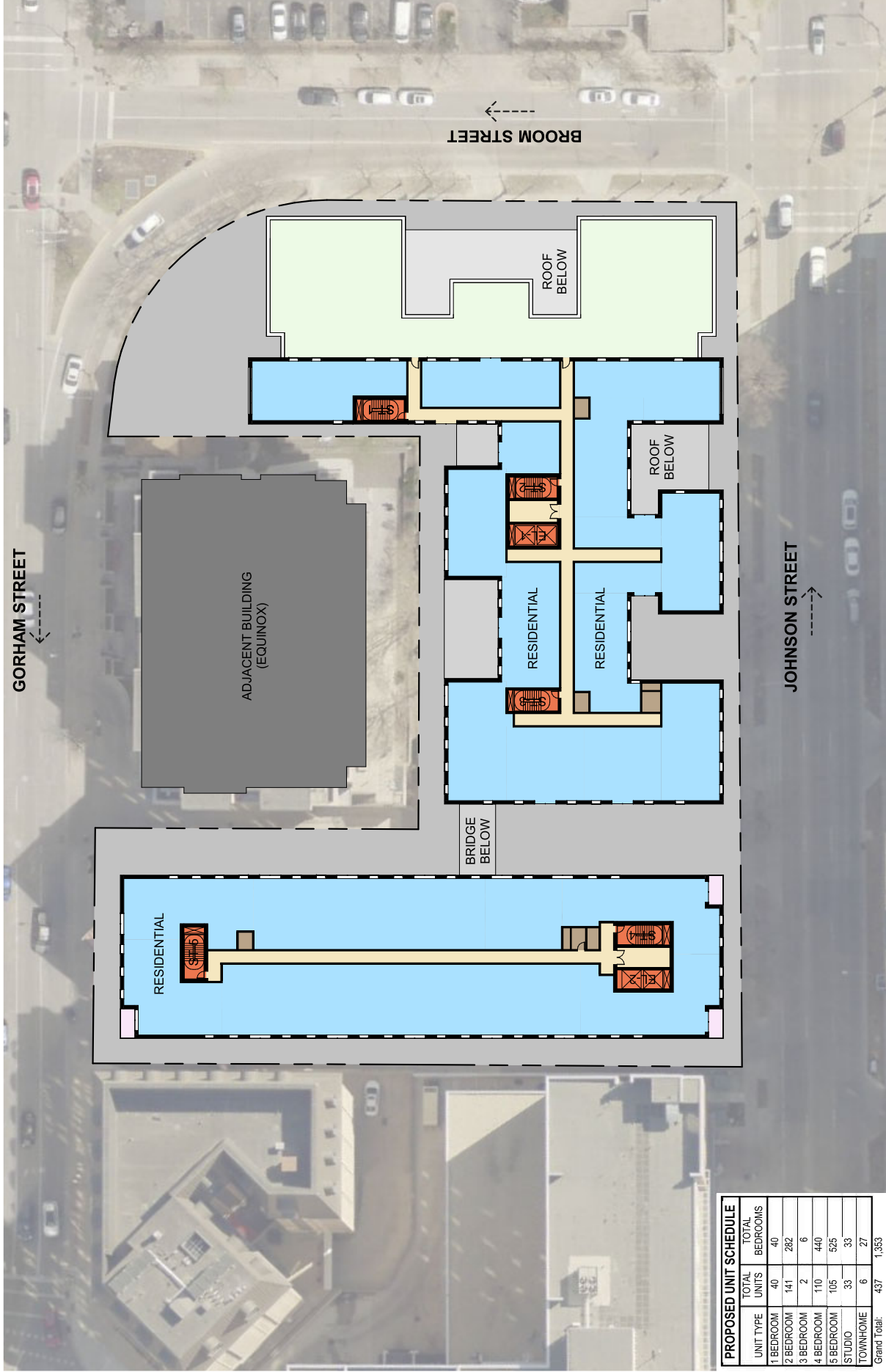
PROPOSED UNIT SCHEDULE		TOTAL	TOTAL
UNIT TYPE	TOTAL UNITS	UNITS	BEDROOMS
1 BEDROOM	40	40	40
2 BEDROOM	141	282	282
3 BEDROOM	2	6	6
4 BEDROOM	110	440	440
5 BEDROOM	105	525	525
STUDIO	33	33	33
TOWNHOME	6	27	27
Grand Total:		437	1,353



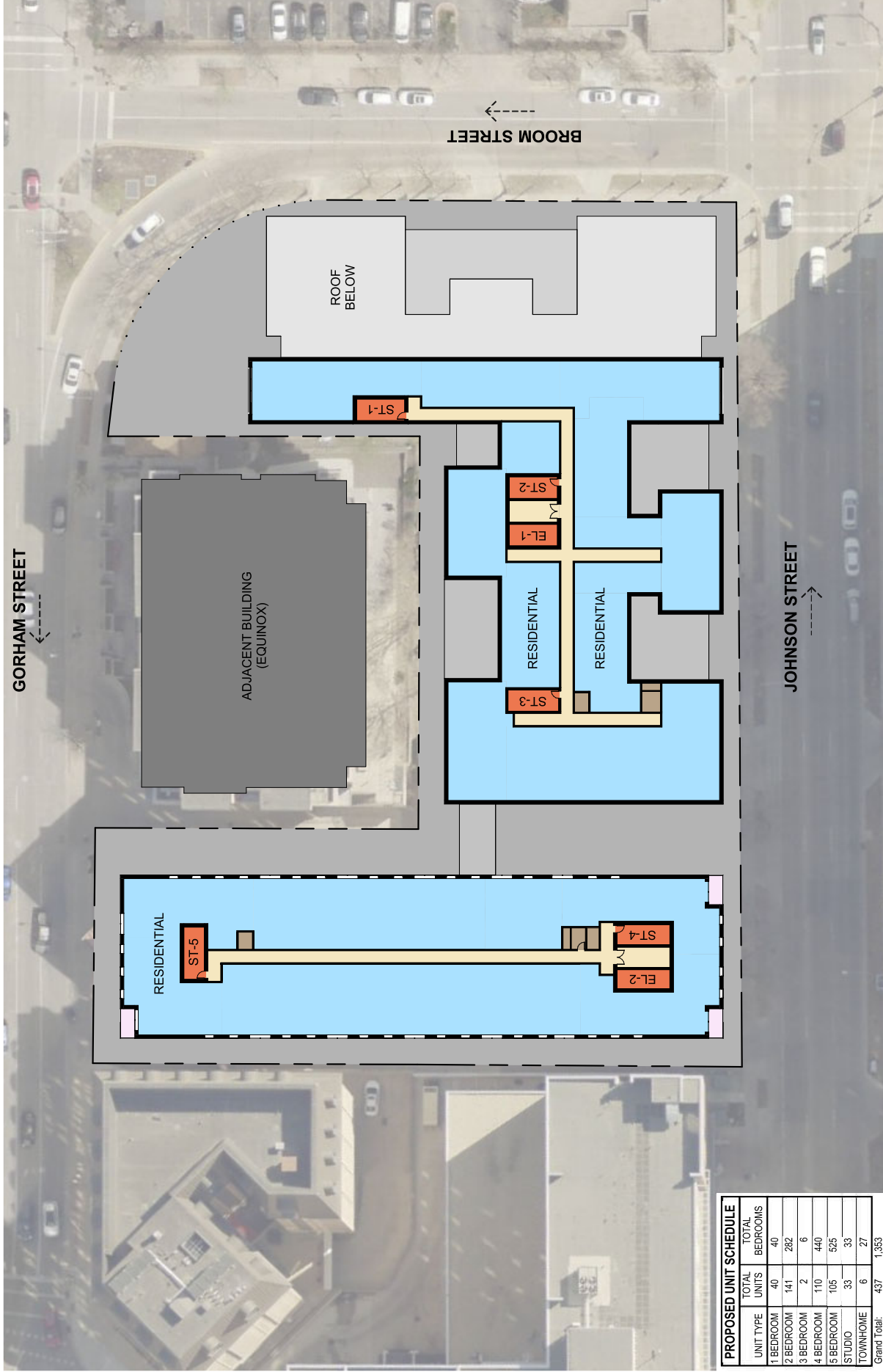
PROPOSED UNIT SCHEDULE		
UNIT TYPE	TOTAL UNITS	TOTAL BEDROOMS
1 BEDROOM	40	40
2 BEDROOM	141	282
3 BEDROOM	2	6
4 BEDROOM	110	440
5 BEDROOM	105	525
STUDIO	33	33
TOWNHOME	6	27
Grand Total:	437	1,353



PROPOSED UNIT SCHEDULE		
UNIT TYPE	TOTAL UNITS	TOTAL BEDROOMS
1 BEDROOM	40	40
2 BEDROOM	141	282
3 BEDROOM	2	6
4 BEDROOM	110	440
5 BEDROOM	105	525
STUDIO	33	33
TOWNHOME	6	27
Grand Total:		437 1,353

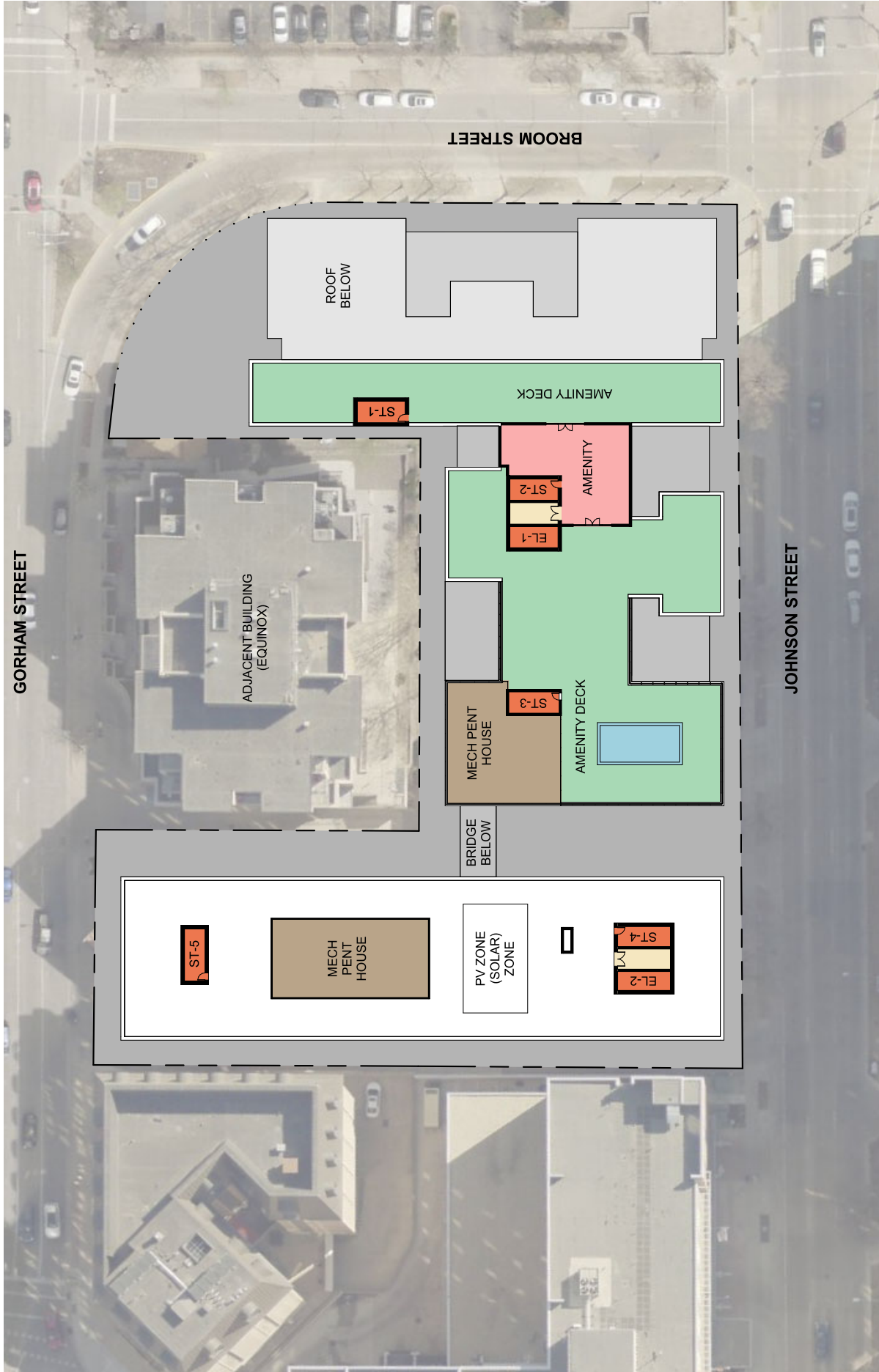


PROPOSED UNIT SCHEDULE		TOTAL UNITS	TOTAL BEDROOMS
1 BEDROOM	40	40	
2 BEDROOM	141	282	
3 BEDROOM	2	6	
4 BEDROOM	110	440	
5 BEDROOM	105	525	
STUDIO	33	33	
TOWNHOME	6	27	
Grand Total:	437	1,353	



PROPOSED UNIT SCHEDULE		
UNIT TYPE	TOTAL UNITS	TOTAL BEDROOMS
1 BEDROOM	40	40
2 BEDROOM	141	282
3 BEDROOM	2	6
4 BEDROOM	110	440
5 BEDROOM	105	525
STUDIO	33	33
TOWNHOME	6	27
Grand Total:	437	1,353



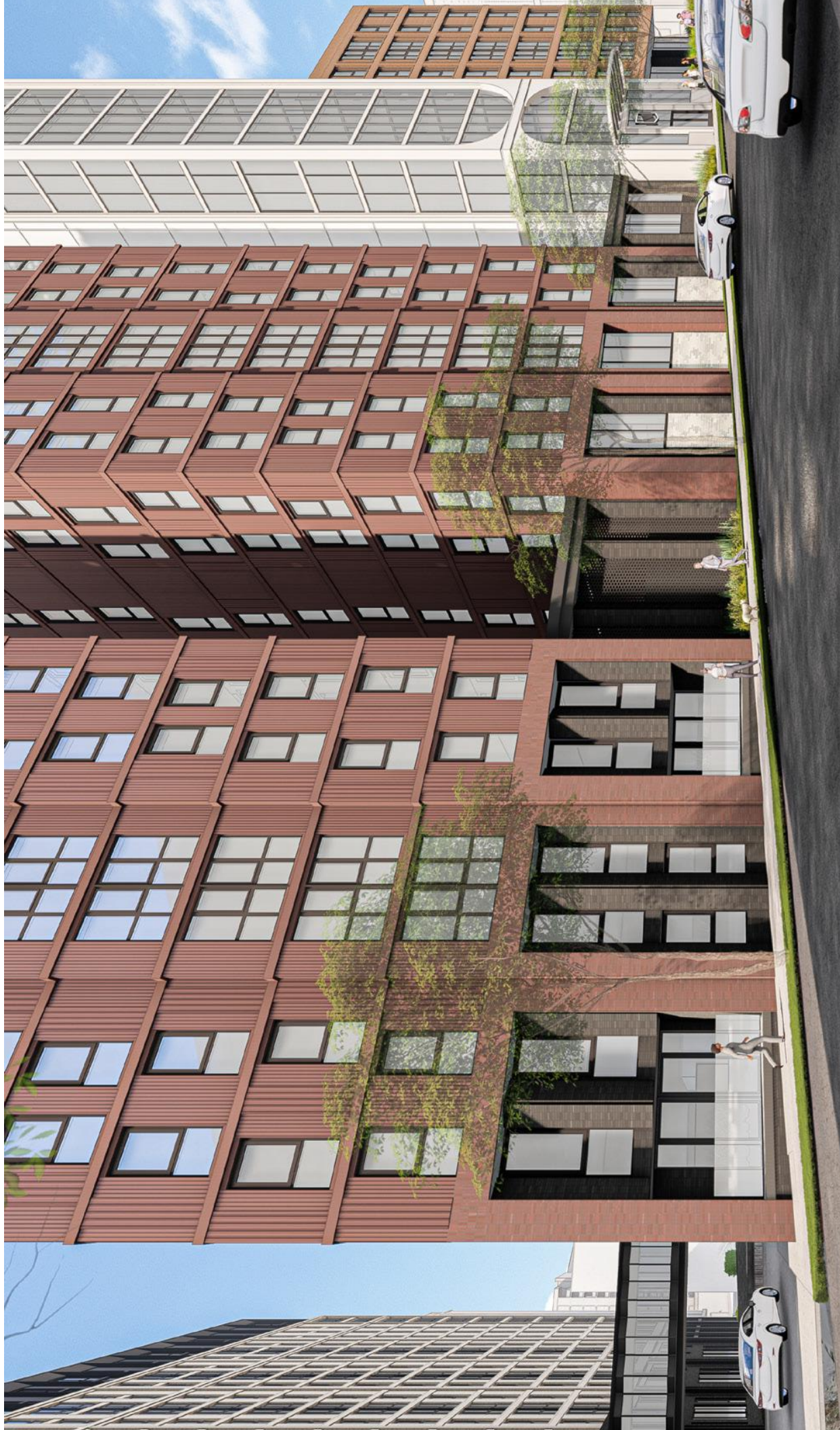










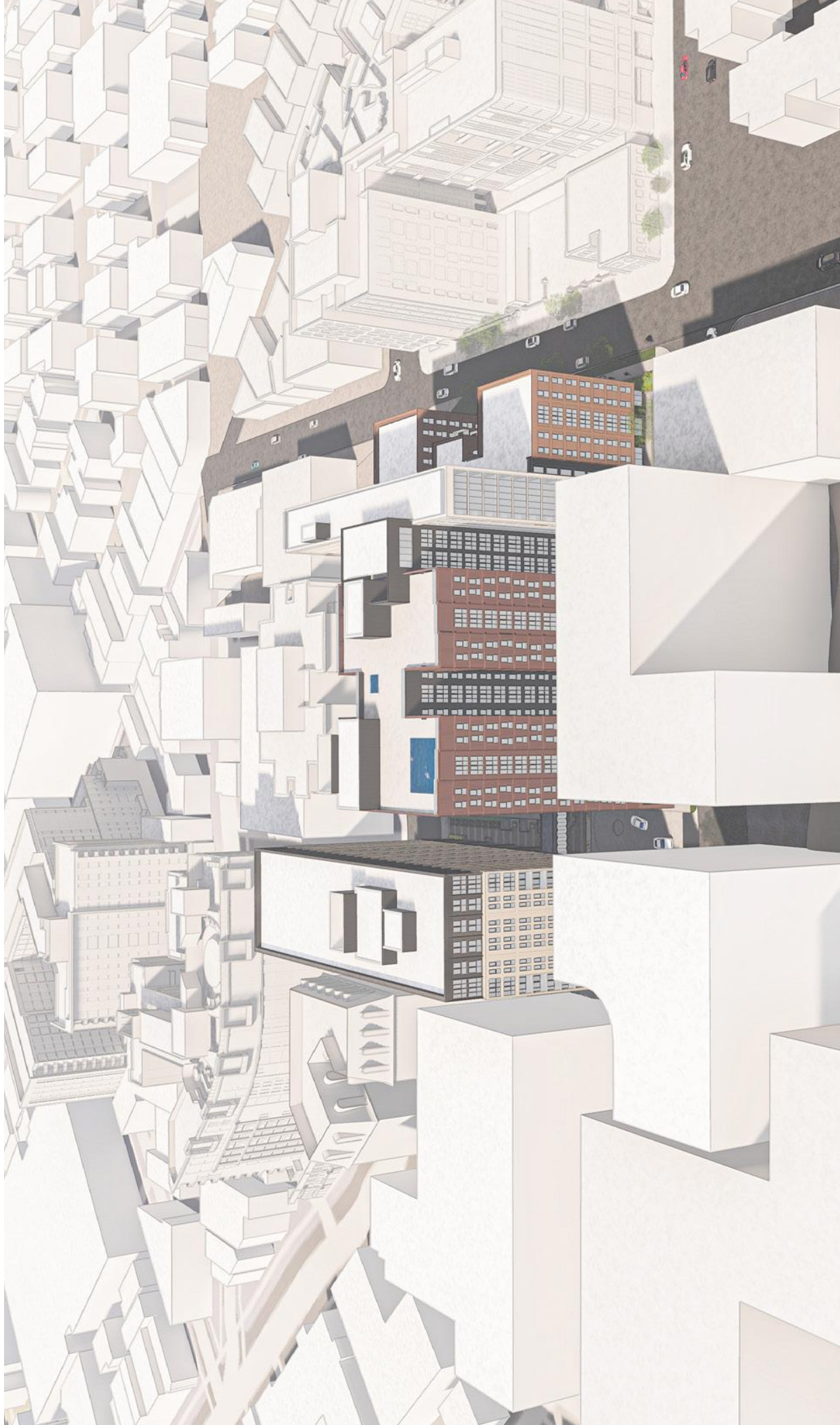




















PREVIOUS



CURRENT



PREVIOUS



CURRENT



PREVIOUS



CURRENT



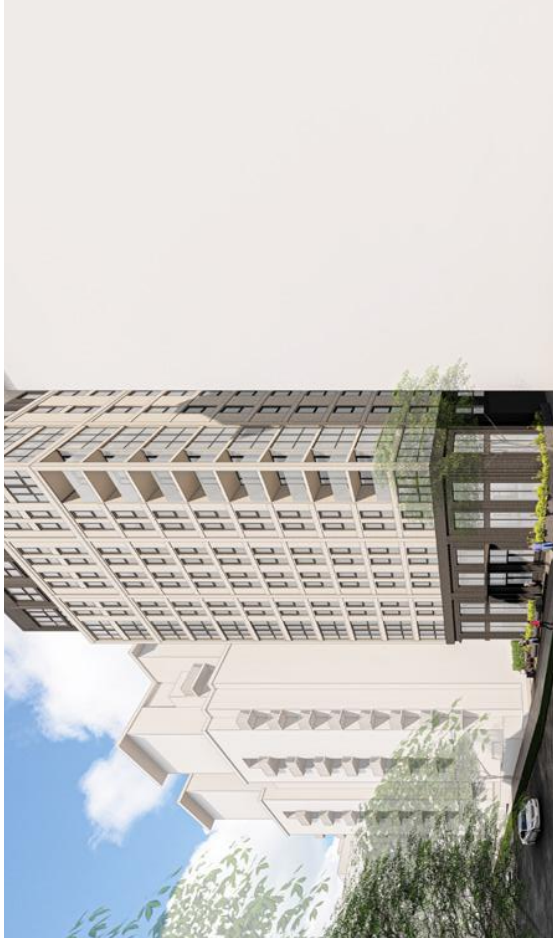
PREVIOUS



CURRENT



PREVIOUS



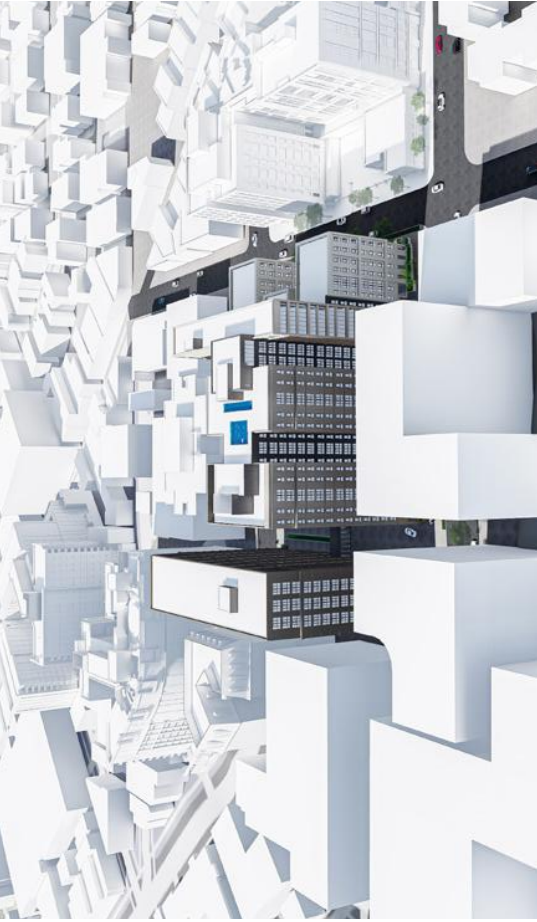
CURRENT



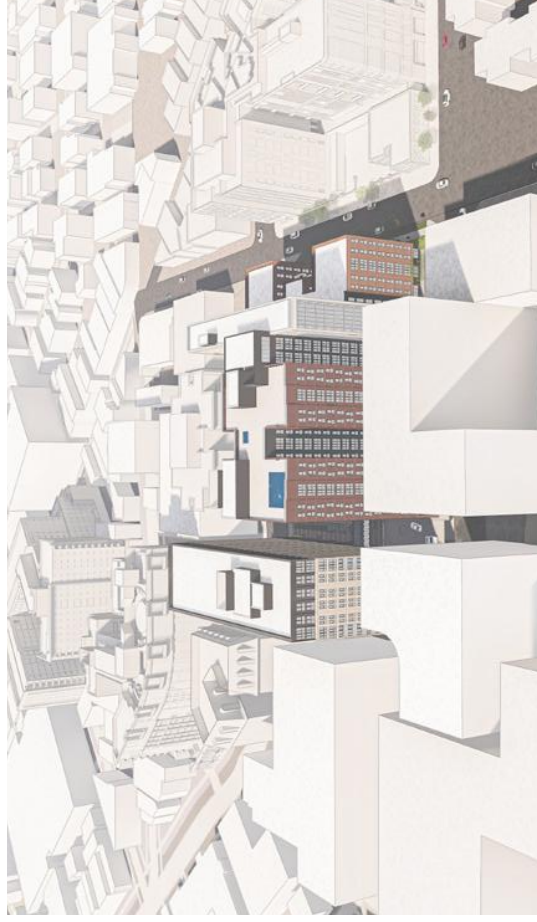
PREVIOUS



CURRENT



PREVIOUS



CURRENT



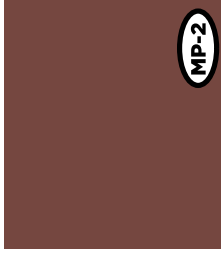
PREVIOUS



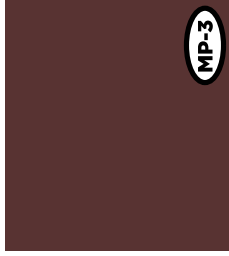
CURRENT



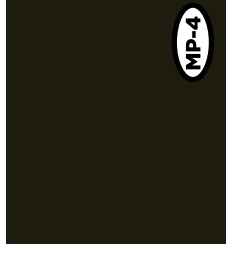
MP-1
METAL PANEL
COLOR, WARM WHITE



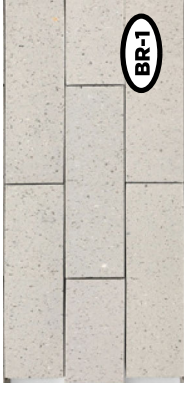
MP-2
METAL PANEL
COLOR, RED



MP-3
METAL PANEL
COLOR, RED



MP-4
METAL PANEL
COLOR, MIDNIGHT BRONZE



BR-1
BRICK
COLOR, CEDAR



BR-2
BRICK
COLOR, COPPERSTONE



BR-3
BRICK
COLOR, RED



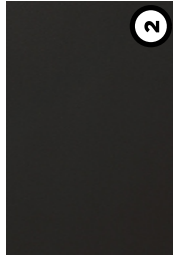
BR-4
BRICK
COLOR, COAL BRINDLE



GLAZING UNITS
LOW IRON CLEAR



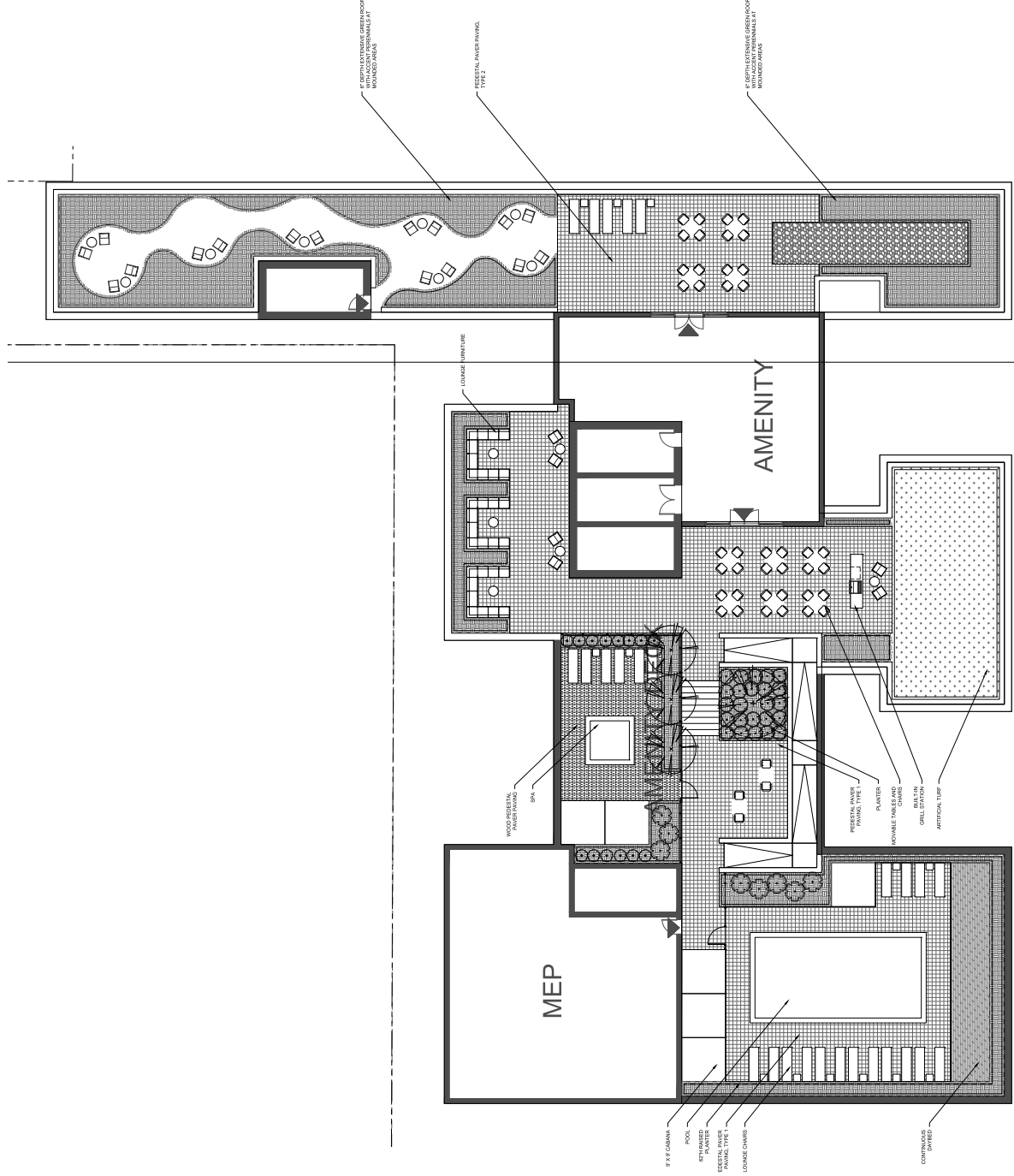
1
STOREFRONT SYSTEM
COLOR, BLACK



2
POLYMER WINDOW SYSTEM
COLOR, BLACK

LEGEND

	PROPERTY LINE
	PROJECT UNIT LINE (OFFSET BY PER QUARTY)
	PAVED CONCRETE
	PEDESTAL CONCRETE PAVING TYPE 2
	PEDESTAL CONCRETE PAVING TYPE 1
	WOOD PAVER PAVING
	WOOD PAVER PAVING TYPE 1
	WOOD PAVER PAVING TYPE 2
	AGGREGATE PAVING (TYPE 1)
	AGGREGATE PAVING (TYPE 2)
	RAISED PLANTER
	DAINED
	BENCH
	SHRUB TREE
	ORNAMENTAL TREE
	GRASS/DECORATIVE PERENNIALS
	SOD





Madison, WI 53706
5000 Wisconsin Ave
Madison, WI 53706

PLANT SCHEDULE - GROUND FLOOR

Table with columns: CODE, QTY, BOTANICAL NAME, COMMON NAME, ROOT, SIZE, REMARKS. Includes sections for DECIDUOUS TREES, EVERGREEN TREES, DECIDUOUS SHRUBS, PERENNIALS, and ORNAMENTAL GRASSES & PERENNIALS.

PLANT MATERIAL & GROWING MEDIA PRODUCT DATA FOR REVIEW AND APPROVAL BY LANDSCAPE ARCHITECT, ADR, & OWNER'S REP PRIOR TO PURCHASE AND INSTALLATION. INCLUDE PHOTOS AND NOTE HEIGHTS AND WIDTHS OF ALL PLANT MATERIAL.

PLANT SCHEDULE - LEVEL 9

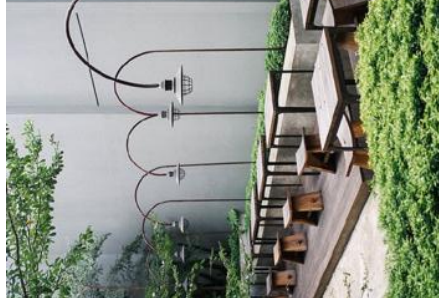
Table with columns: CODE, QTY, BOTANICAL NAME, COMMON NAME, ROOT, SIZE, REMARKS. Includes sections for DECIDUOUS TREES, EVERGREEN TREES, DECIDUOUS SHRUBS, PERENNIALS, and ORNAMENTAL GRASSES & PERENNIALS.

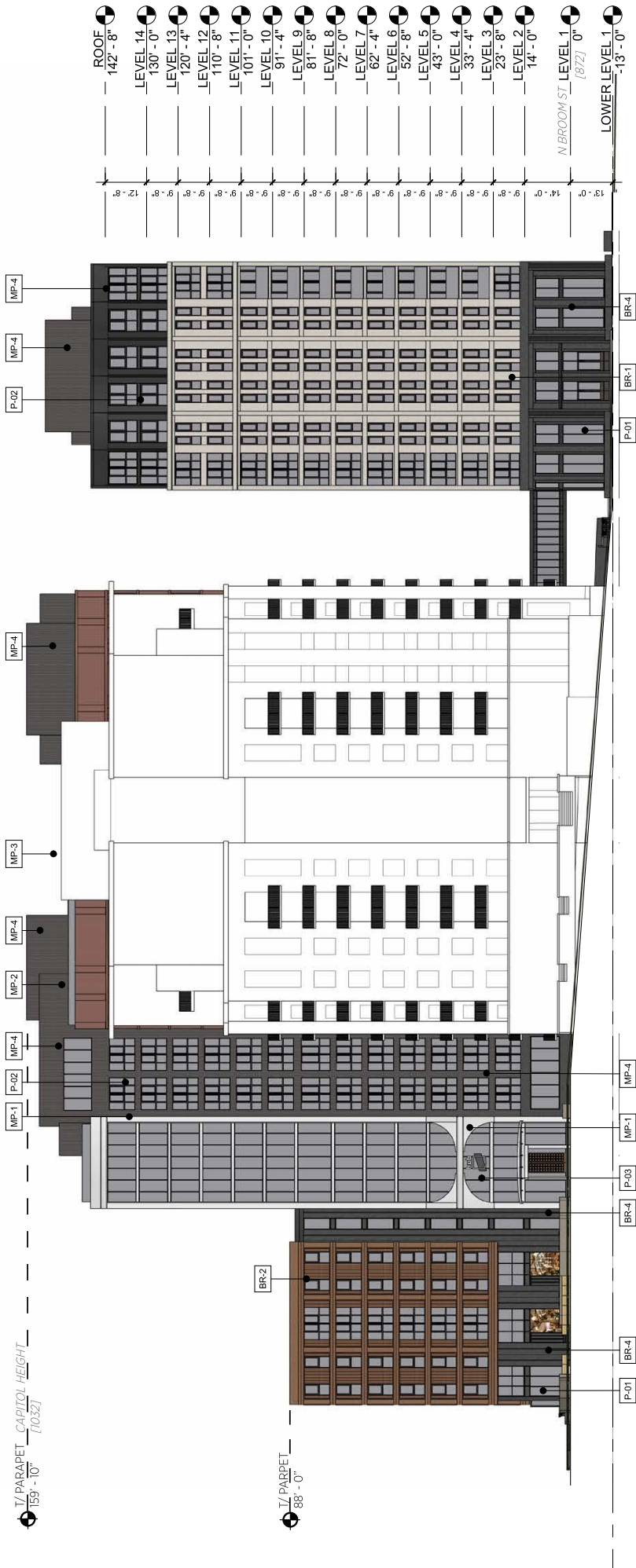
PLANT MATERIAL & GROWING MEDIA PRODUCT DATA FOR REVIEW AND APPROVAL BY LANDSCAPE ARCHITECT, ADR, & OWNER'S REP PRIOR TO PURCHASE AND INSTALLATION. INCLUDE PHOTOS AND NOTE HEIGHTS AND WIDTHS OF ALL PLANT MATERIAL.

PLANT SCHEDULE - ROOF

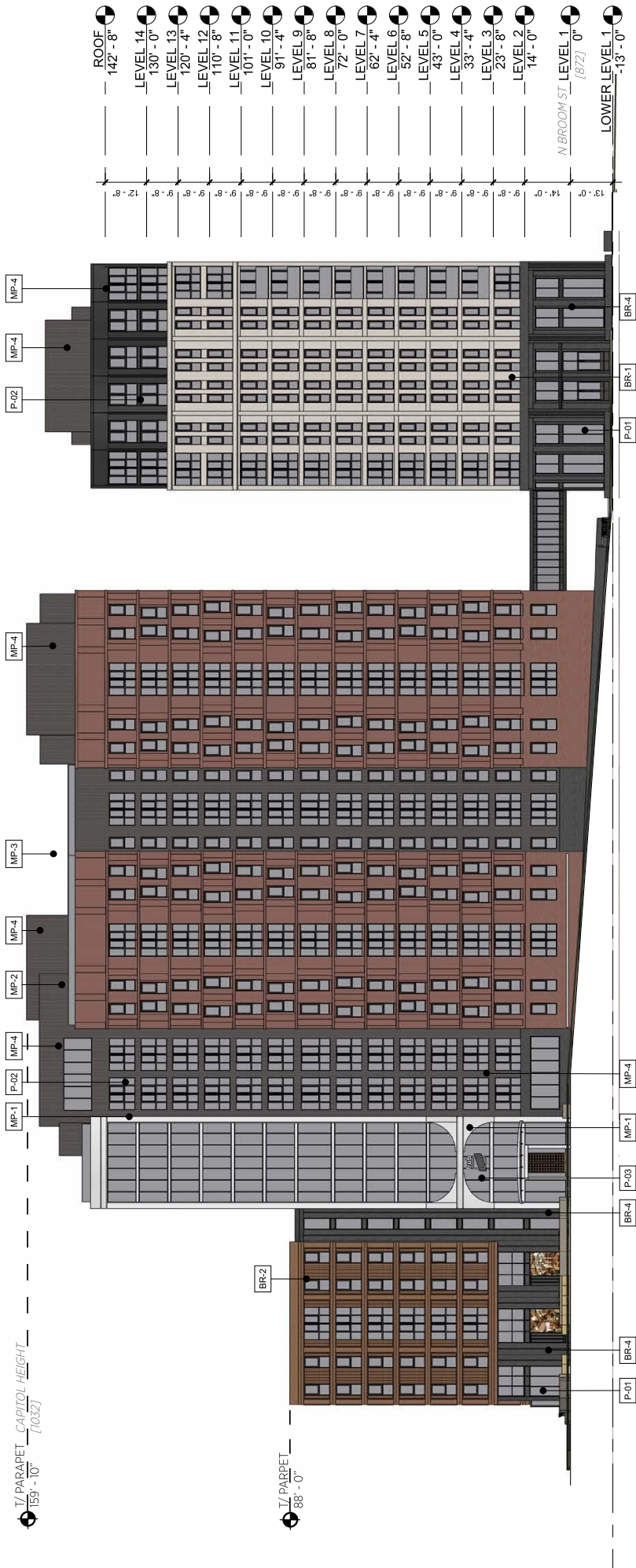
Table with columns: CODE, QTY, BOTANICAL NAME, COMMON NAME, ROOT, SIZE, REMARKS. Includes sections for DECIDUOUS TREES, EVERGREEN TREES, DECIDUOUS SHRUBS, PERENNIALS, and ORNAMENTAL GRASSES & PERENNIALS.

PLANT MATERIAL & GROWING MEDIA PRODUCT DATA FOR REVIEW AND APPROVAL BY LANDSCAPE ARCHITECT, ADR, & OWNER'S REP PRIOR TO PURCHASE AND INSTALLATION. INCLUDE PHOTOS AND NOTE HEIGHTS AND WIDTHS OF ALL PLANT MATERIAL.





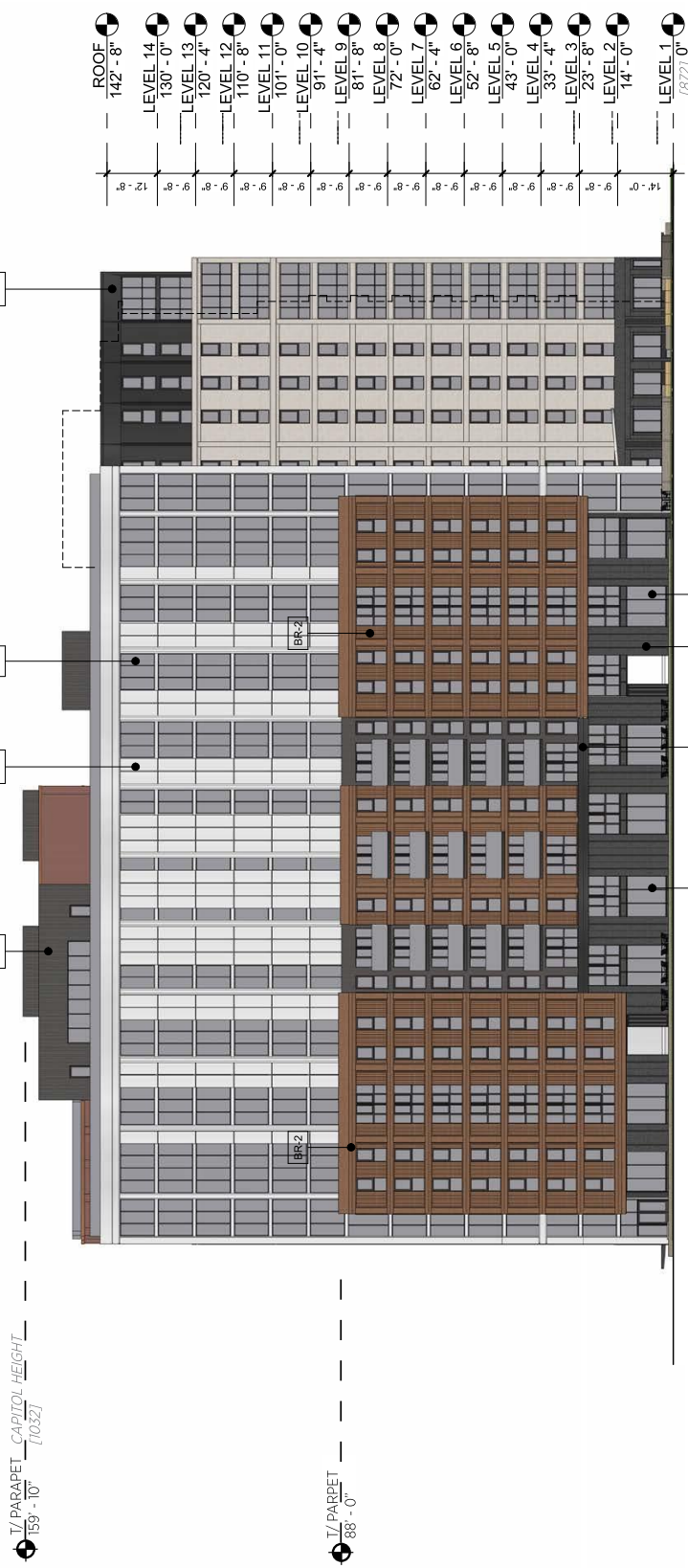
- P-01 STOREFRONT SYSTEM, COLOR: BLACK
- P-02 POLYMER WINDOW SYSTEM, COLOR: BLACK
- P-03 POLYMER WINDOW SYSTEM, COLOR: WARM STONE
- MP-1 METAL PANEL, COLOR: WARM WHITE
- MP-2 METAL PANEL, COLOR: RED
- MP-3 METAL PANEL, COLOR: RED
- MP-4 METAL PANEL, COLOR: DARK BRONZE
- BR-1 BRICK, COLOR: CEDAR
- BR-2 BRICK, COLOR: COPPERSTONE
- BR-3 BRICK, COLOR: RED
- BR-4 BRICK, COLOR: COAL BRINDLE



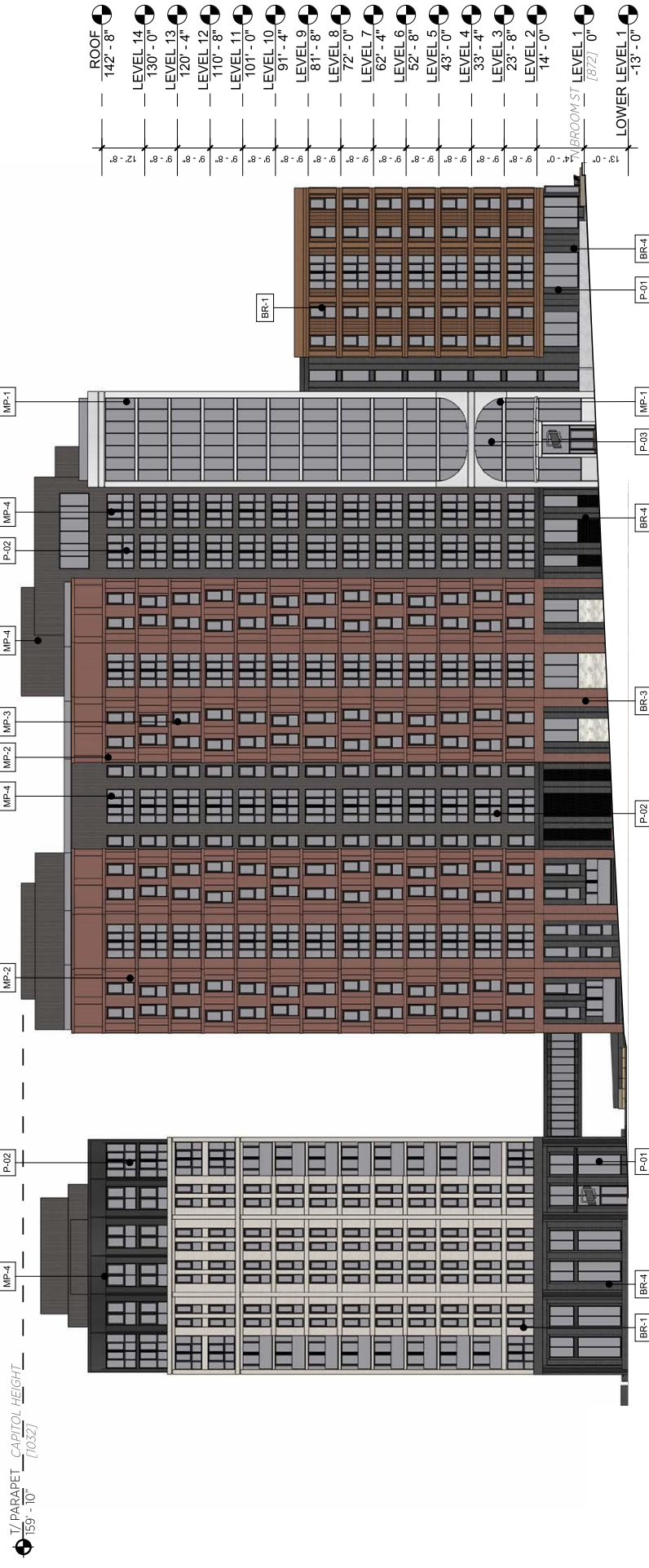
- BR-1 BRICK, COLOR: CEDAR
- BR-2 BRICK, COLOR: COPPERSTONE
- BR-3 BRICK, COLOR: RED
- BR-4 BRICK, COLOR: COAL BRINDLE

- MP-1 METAL PANEL, COLOR: WARM WHITE
- MP-2 METAL PANEL, COLOR: RED
- MP-3 METAL PANEL, COLOR: RED
- MP-4 METAL PANEL, COLOR: DARK BRONZE

- P-01 STOREFRONT SYSTEM, COLOR: BLACK
- P-02 POLYMER WINDOW SYSTEM, COLOR: BLACK
- P-03 POLYMER WINDOW SYSTEM, COLOR: WARM STONE



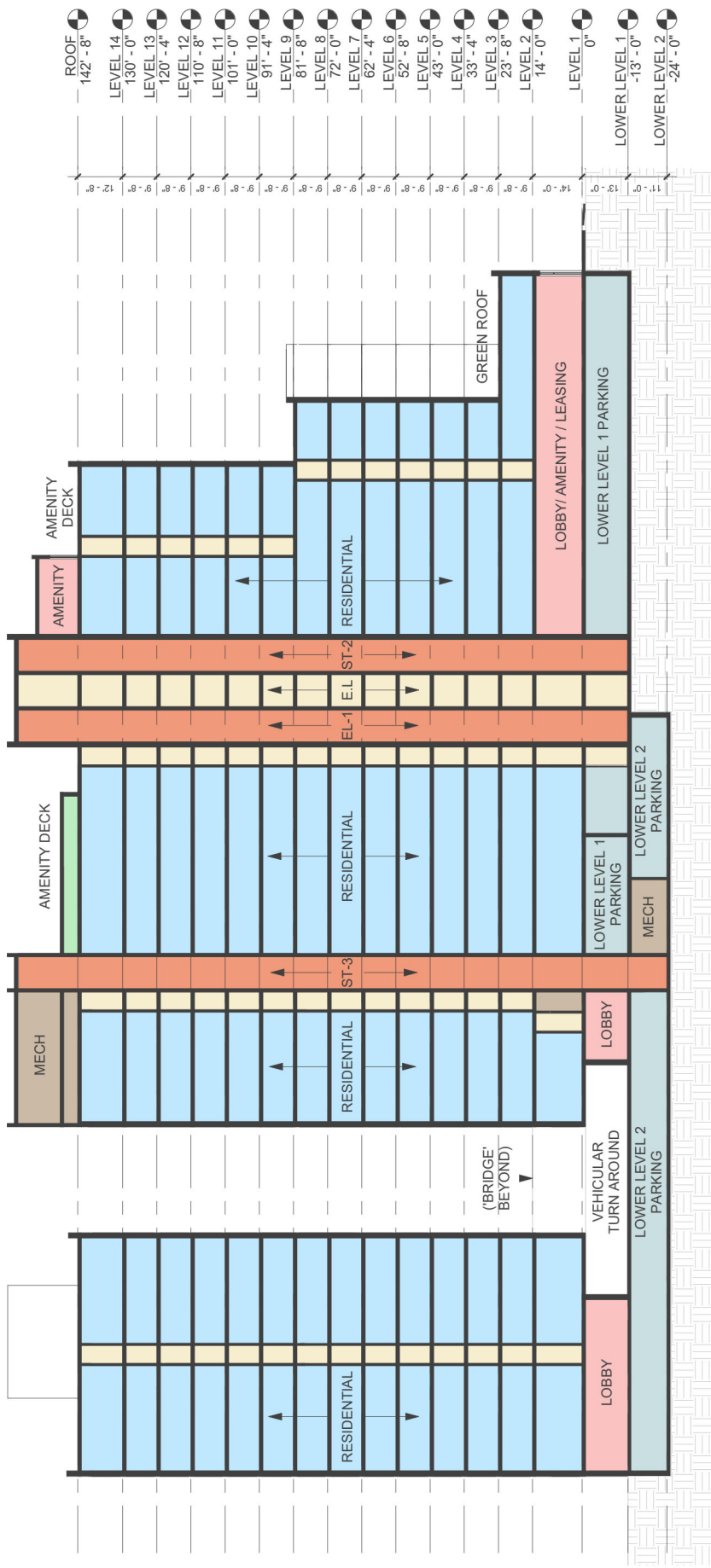
- P-01 STOREFRONT SYSTEM, COLOR: BLACK
- P-02 POLYMER WINDOW SYSTEM, COLOR: BLACK
- P-03 POLYMER WINDOW SYSTEM, COLOR: WARM STONE
- MP-1 METAL PANEL, COLOR: WARM WHITE
- MP-2 METAL PANEL, COLOR: RED
- MP-3 METAL PANEL, COLOR: RED
- MP-4 METAL PANEL, COLOR: DARK BRONZE
- BR-1 BRICK, COLOR: CEDAR
- BR-2 BRICK, COLOR: COPPERSTONE
- BR-3 BRICK, COLOR: RED
- BR-4 BRICK, COLOR: COAL BRINDLE



P-01 STOREFRONT SYSTEM, COLOR: BLACK
 P-02 POLYMER WINDOW SYSTEM, COLOR: BLACK
 P-03 POLYMER WINDOW SYSTEM, COLOR: WARM STONE

MP-1 METAL PANEL, COLOR: WARM WHITE
 MP-2 METAL PANEL, COLOR: RED
 MP-3 METAL PANEL, COLOR: RED
 MP-4 METAL PANEL, COLOR: DARK BRONZE

BR-1 BRICK, COLOR: CEDAR
 BR-2 BRICK, COLOR: COPPERSTONE
 BR-3 BRICK, COLOR: RED
 BR-4 BRICK, COLOR: COAL BRINDLE



KEY PLAN



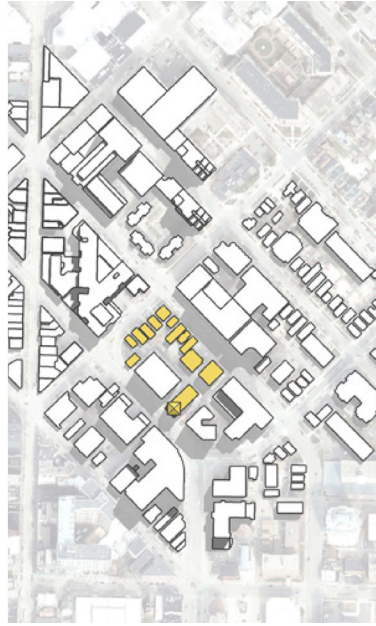
SPRING 10 AM



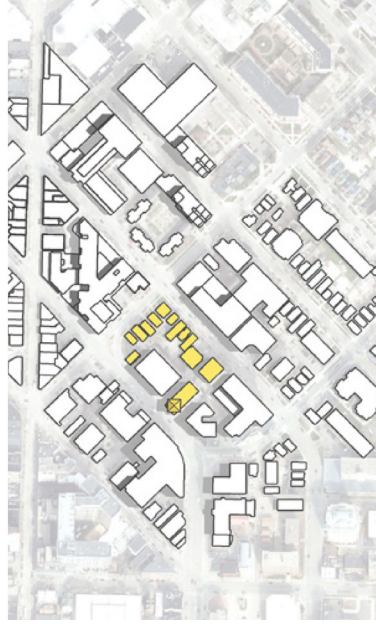
SPRING 12 PM



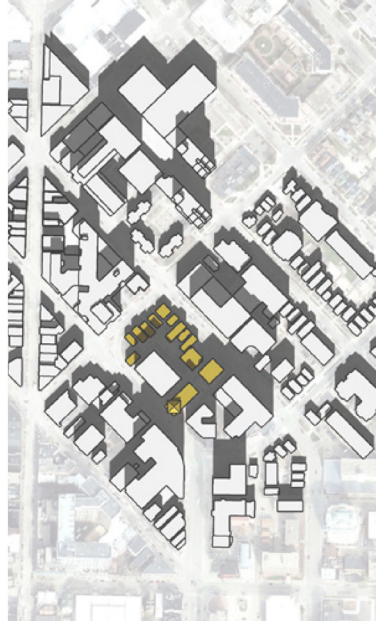
SPRING 4 PM



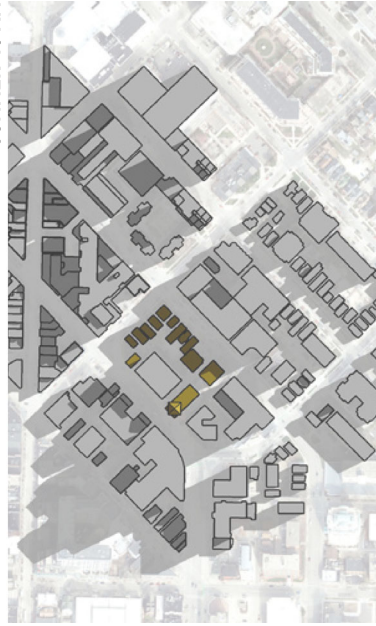
SUMMER 10 AM



SUMMER 12 PM



SUMMER 4 PM



WINTER 10 AM



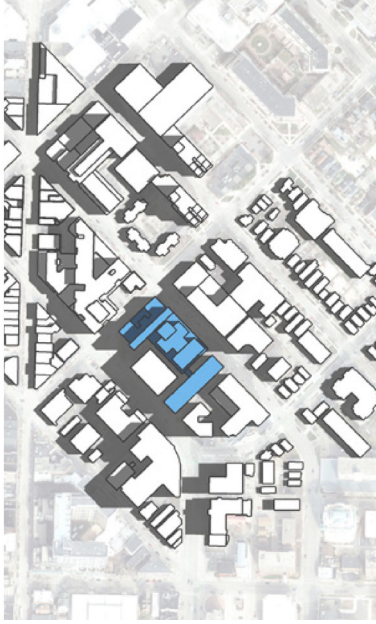
WINTER 12 PM



WINTER 4 PM



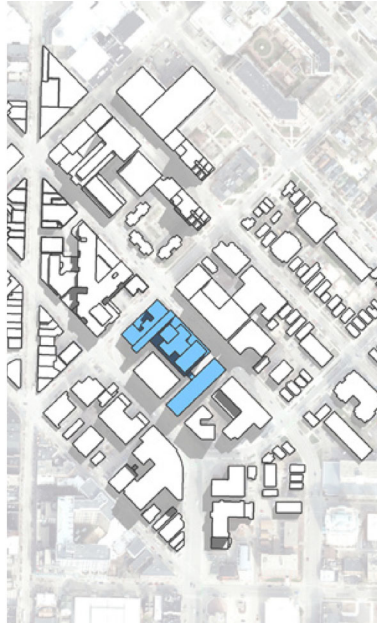
SPRING 10 AM



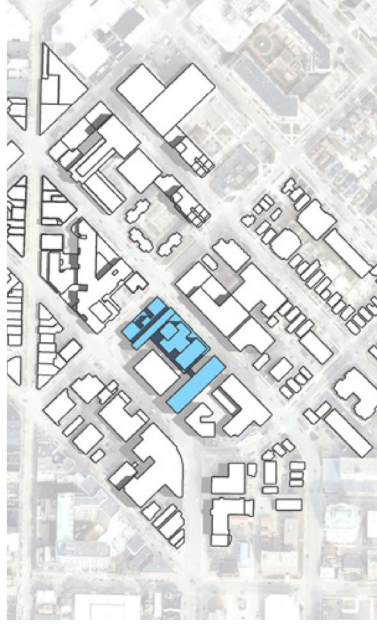
SPRING 12 PM



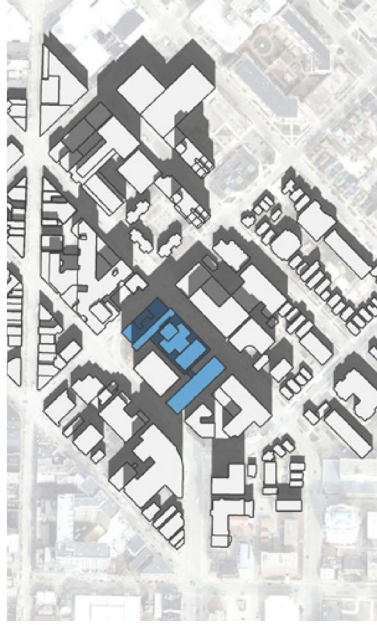
SPRING 4 PM



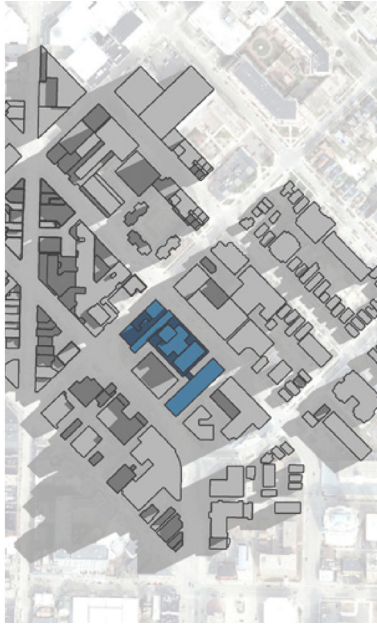
SUMMER 10 AM



SUMMER 12 PM



SUMMER 4 PM



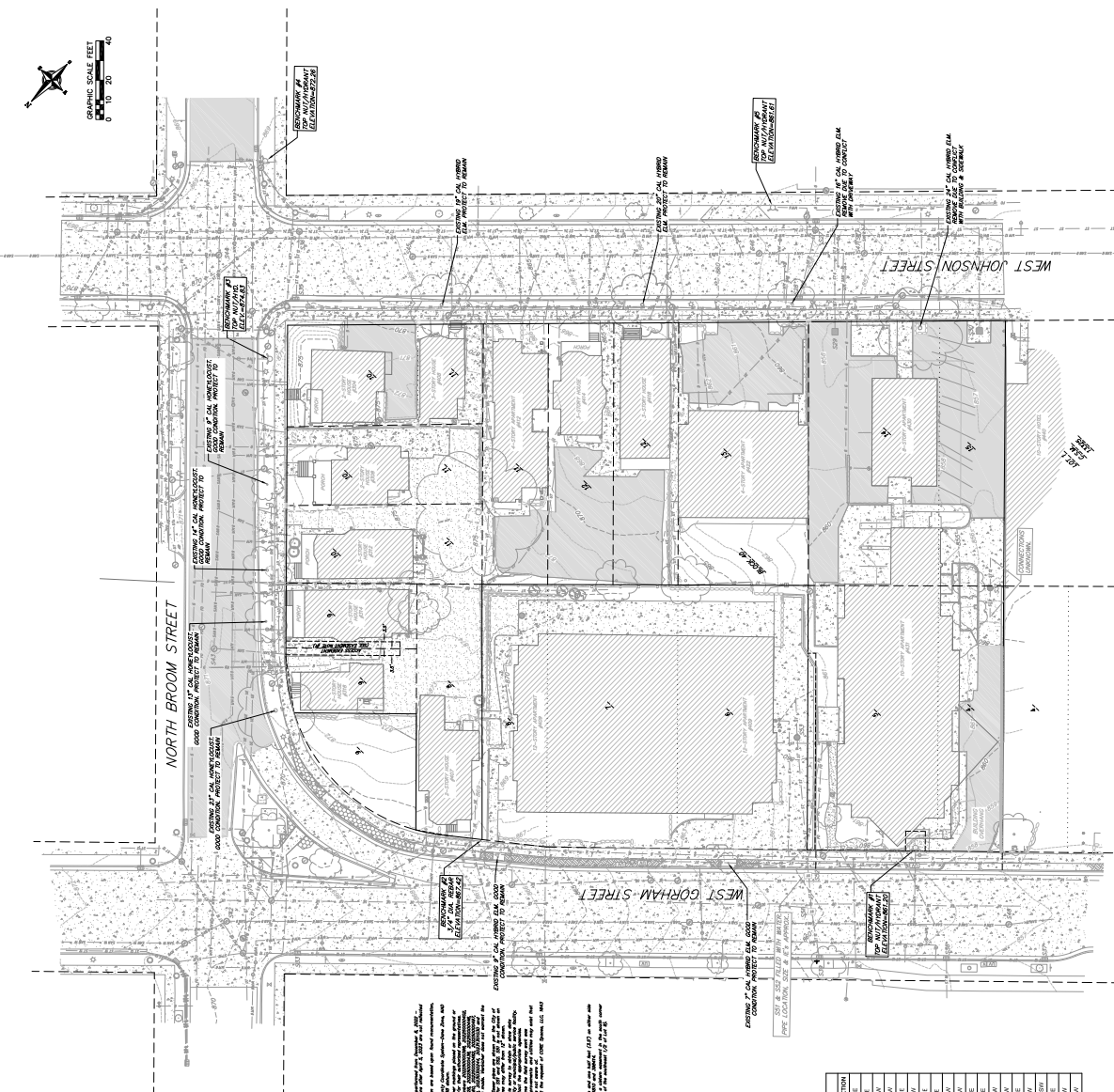
WINTER 10 AM



WINTER 12 PM



WINTER 4 PM



- IMPROVING SYMBOL LEGEND**
- EXISTING BALLARD
 - EXISTING BALLARD (TYPE NOTED)
 - ▭ EXISTING PARKING METER
 - ▭ EXISTING FIELD INLET RECTANGULAR
 - ▭ EXISTING FIELD INLET
 - ▭ EXISTING STORM MANHOLE
 - ▭ EXISTING SANITARY CLEANOUT
 - ▭ EXISTING SANITARY CLEANOUT
 - ▭ EXISTING FIRE HYDRANT
 - ▭ EXISTING FIRE DEPARTMENT CONNECTION
 - ▭ EXISTING CURB STOP
 - ▭ EXISTING GAS VALVE
 - ▭ EXISTING AIR CONDITIONING REFRIGERANT
 - ▭ EXISTING ELECTRIC MANHOLE
 - ▭ EXISTING ELECTRIC REFRIGERANT
 - ▭ EXISTING ELECTRIC METER
 - ▭ EXISTING LIGHT POLE
 - ▭ EXISTING UTILITY POLE
 - ▭ EXISTING TELEPHONE MANHOLE
 - ▭ EXISTING TRAFFIC SIGNAL
 - ▭ EXISTING CONCRETE TREE
 - EXISTING DECIDUOUS TREE

- TOPOGRAPHIC LANDSCAPE LEGEND**
- EXISTING UNDERGROUND CABLE TV
 - EXISTING FIBER OPTIC LINE
 - EXISTING TELEPHONE
 - EXISTING RETAINING WALL
 - EXISTING GRASS LAWN FENCE
 - EXISTING GAS LINE
 - EXISTING OVERHEAD ELECTRIC LINE
 - EXISTING SANITARY SEWER LINE (SIZE NOTED)
 - EXISTING WATER MAIN (SIZE NOTED)
 - EXISTING MAJOR CONTIGUOUS
 - EXISTING EDGE OF PARKWAY
 - EXISTING GRAVEL SURFACE
 - EXISTING CONCRETE SURFACE
 - EXISTING ASPHALT SURFACE
 - EXISTING PAVED BLOCK SURFACE

NOTES

1. ALL UTILITIES SHOWN ARE BASED ON RECORD DRAWINGS AND FIELD SURVEY DATA. THE CLIENT IS RESPONSIBLE FOR VERIFYING THE ACCURACY OF ALL UTILITIES.
2. THE CLIENT IS RESPONSIBLE FOR OBTAINING ALL NECESSARY PERMITS AND APPROVALS FROM THE APPROPRIATE AGENCIES.
3. ALL UTILITIES SHALL BE DEPTH MARKED AND IDENTIFIED BY THE CONTRACTOR.
4. THE CONTRACTOR SHALL BE RESPONSIBLE FOR PROTECTING ALL EXISTING UTILITIES AND STRUCTURES.
5. ALL UTILITIES SHALL BE INSTALLED IN ACCORDANCE WITH THE LATEST EDITIONS OF THE APPROPRIATE CODES AND STANDARDS.
6. THE CONTRACTOR SHALL BE RESPONSIBLE FOR MAINTAINING ACCESS TO ALL ADJACENT PROPERTIES AND UTILITIES.
7. ALL UTILITIES SHALL BE INSTALLED IN ACCORDANCE WITH THE LATEST EDITIONS OF THE APPROPRIATE CODES AND STANDARDS.
8. THE CONTRACTOR SHALL BE RESPONSIBLE FOR MAINTAINING ACCESS TO ALL ADJACENT PROPERTIES AND UTILITIES.
9. ALL UTILITIES SHALL BE INSTALLED IN ACCORDANCE WITH THE LATEST EDITIONS OF THE APPROPRIATE CODES AND STANDARDS.
10. THE CONTRACTOR SHALL BE RESPONSIBLE FOR MAINTAINING ACCESS TO ALL ADJACENT PROPERTIES AND UTILITIES.

EXISTING EASEMENTS (SEE PLAN SHEET)

NAME	TYPE	BM	INVERT	DIRECTION
141	SEWER	862.62	864.06	NE
142	SEWER	870.18	869.47	NE
143	SEWER	873.27	869.47	NE
144	SEWER	869.00	865.70	NE
145	SEWER	867.24	865.11	SW
146	SEWER	869.00	865.70	NE
147	SEWER	869.00	865.70	NE
148	SEWER	867.24	865.11	SW
149	SEWER	869.00	865.70	NE
150	SEWER	869.00	865.70	NE
151	SEWER	867.24	865.11	SW
152	SEWER	869.00	865.70	NE
153	SEWER	867.24	865.11	SW
154	SEWER	869.00	865.70	NE
155	SEWER	869.00	865.70	NE
156	SEWER	867.24	865.11	SW
157	SEWER	869.00	865.70	NE
158	SEWER	869.00	865.70	NE
159	SEWER	867.24	865.11	SW
160	SEWER	869.00	865.70	NE
161	SEWER	869.00	865.70	NE
162	SEWER	867.24	865.11	SW
163	SEWER	869.00	865.70	NE
164	SEWER	869.00	865.70	NE
165	SEWER	867.24	865.11	SW
166	SEWER	869.00	865.70	NE
167	SEWER	869.00	865.70	NE
168	SEWER	867.24	865.11	SW
169	SEWER	869.00	865.70	NE
170	SEWER	869.00	865.70	NE
171	SEWER	867.24	865.11	SW
172	SEWER	869.00	865.70	NE
173	SEWER	869.00	865.70	NE
174	SEWER	867.24	865.11	SW
175	SEWER	869.00	865.70	NE
176	SEWER	869.00	865.70	NE
177	SEWER	867.24	865.11	SW
178	SEWER	869.00	865.70	NE
179	SEWER	869.00	865.70	NE
180	SEWER	867.24	865.11	SW

EXISTING EASEMENTS (SEE PLAN SHEET)

NAME	TYPE	BM	INVERT	DIRECTION
127	SEWER	865.73	865.52	NE
128	SEWER	862.62	864.06	NE
129	SEWER	862.62	864.06	NE
130	SEWER	865.62	865.59	SE
131	SEWER	865.73	864.50	SE
132	SEWER	865.73	865.52	SW
133	SEWER	865.73	865.52	SW
134	SEWER	865.73	865.52	SW
135	SEWER	873.27	866.54	SW
136	SEWER	873.27	866.54	SW
137	SEWER	865.62	865.59	SE
138	SEWER	865.62	865.59	SE
139	SEWER	865.62	865.59	SE
140	SEWER	865.62	865.59	SE
141	SEWER	865.62	865.59	SE
142	SEWER	865.62	865.59	SE
143	SEWER	865.62	865.59	SE
144	SEWER	865.62	865.59	SE
145	SEWER	865.62	865.59	SE
146	SEWER	865.62	865.59	SE
147	SEWER	865.62	865.59	SE
148	SEWER	865.62	865.59	SE
149	SEWER	865.62	865.59	SE
150	SEWER	865.62	865.59	SE
151	SEWER	865.62	865.59	SE
152	SEWER	865.62	865.59	SE
153	SEWER	865.62	865.59	SE
154	SEWER	865.62	865.59	SE
155	SEWER	865.62	865.59	SE
156	SEWER	865.62	865.59	SE
157	SEWER	865.62	865.59	SE
158	SEWER	865.62	865.59	SE
159	SEWER	865.62	865.59	SE
160	SEWER	865.62	865.59	SE
161	SEWER	865.62	865.59	SE
162	SEWER	865.62	865.59	SE
163	SEWER	865.62	865.59	SE
164	SEWER	865.62	865.59	SE
165	SEWER	865.62	865.59	SE
166	SEWER	865.62	865.59	SE
167	SEWER	865.62	865.59	SE
168	SEWER	865.62	865.59	SE
169	SEWER	865.62	865.59	SE
170	SEWER	865.62	865.59	SE
171	SEWER	865.62	865.59	SE
172	SEWER	865.62	865.59	SE
173	SEWER	865.62	865.59	SE
174	SEWER	865.62	865.59	SE
175	SEWER	865.62	865.59	SE
176	SEWER	865.62	865.59	SE
177	SEWER	865.62	865.59	SE
178	SEWER	865.62	865.59	SE
179	SEWER	865.62	865.59	SE
180	SEWER	865.62	865.59	SE