



PUBLIC MEETINGS ON PROPOSED REDUCTIONS TO UW CAMPUS SERVICE

CAMPUS BUS SERVICE MEETING

Thursday, May 3 at 7 PM

Memorial Union - [Inn Wisconsin](#) (Second Level East Wing)

There will be a meeting to discuss proposed service reductions on the University of Wisconsin Campus.

Details:

In an effort to address a budget deficit, Transportation Services is making changes to many of its programs, including adjusting funding for the campus bus service. This adjustment will lead to a decrease of campus bus service by approximately 10%. There will be no major changes to route geography and no routes will be eliminated. Campus bus starting and ending times will remain the same.

The proposed adjustments, made mostly to "headways", the time between bus arrivals, will be effective at the beginning of the fall 2012 semester and will include at least two of the following options:

- Headways for the Route 81 night bus route increase from 15 minutes to 30 minutes. This change brings the headway for Route 81 in line with the existing headway for Route 82.
- Headways for the Route 85 bus increase from 10 minutes to 20 minutes between the hours of 10:00 a.m. and 5:30 p.m., Monday through Friday. Headways remain at 10 minutes between the hours of 7:00 a.m. and 10:00 a.m., Monday through Friday.
- Adjust the Route 80 and Route 85 bus schedules to optimize service. The adjusted schedules preserve most Route 80 headways, increase Route 85 headways slightly and combine a portion of the Route 85 geography with the Route 80 geography.

Currently, campus bus service is funded jointly by UW Housing, the Associated Students of Madison (through segregated fees), and Transportation Services. UW Housing funds approximately 6% of the campus bus services and the Associated Students of Madison and Transportation Services equally fund the balance.

A 2008 Metro Transit survey showed that UW-Madison students represent about 81% of campus bus ridership. Another survey, conducted by UW Transportation Services in March, 2012, showed similar results.

- [View Survey](#)

Because of the Transportation Services budget deficit and a decision by ASM's Student Transportation Board to hold funding at current levels, campus bus costs will be reduced to be consistent with the level of available funding.

Comments can be submitted at the meeting or using Metro's [online feedback form](#). Written comments can also be sent to: Metro Transit Public Hearing Comments, 1245 E. Washington Ave., Madison WI 53703 or emailed to mymetrobus@cityofmadison.com.

NOTICE OF PUBLIC HEARING

[En Español](#)

Wednesday, May 9 at 6 PM

Madison Municipal Building, RM 260
215 Martin Luther King Jr. Blvd.
Accessible entrance located on Doty St.

On Wednesday, May 9, Metro Transit and the City of Madison Transit and Parking Commission will hold a public hearing at 6 PM to discuss proposed reductions in service on the University of Wisconsin campus. Adjustments will also be proposed on Route 11 (PM's) and Route 25.

- [Reductions on UW Campus](#)

ROUTE 11 - PMs

To help afternoon trips stay on schedule more consistently, Metro proposes removing service from the WPS campus. Route proposed to operate on westbound Broadway. All regular bus stops along Broadway would be served. ([See map](#))

ROUTE 25

To help route stay on time, Metro proposes removing service from the Alliant Energy parking lot and East Park Blvd. Route would instead operate on Buttonwood Dr. to Biltmore Ln. Bus stop #9358, on Biltmore Ln. at Buttonwood Dr., would be served by the proposed route. ([See map](#))

STAY INFORMED

- [Get text/email updates](#)
- [Follow on Twitter](#)
- [Watch on YouTube](#)
- [Subscribe to RSS](#)
- [Find on Facebook](#)
- [Explore on Flickr](#)

DETOURS

Modified Capitol Loop
MLK Stop Closed
Wilson St. Stop Closed
All Detours
Sign-up for Email or Text Alerts

Interested persons are encouraged to attend the public hearing to give feedback. Consideration will be given to views and comments expressed at the public hearing as well as to all written comments received.

Submit public hearing comments using Metro's [online feedback form](#). Written comments can also be sent to: Metro Transit Public Hearing Comments, 1245 E. Washington Ave., Madison WI 53703 or emailed to mymetrobus@cityofmadison.com.

The Madison Municipal Building is accessible to people who use mobility aids and is equipped with assistive listening devices.

If you need an interpreter, translator, materials in alternate formats or other accommodations to access this service, activity or program, please contact Metro Transit at (608) 266-4904 (TTY/Textnet at 1-866-704-2316) at least three business days prior to the meeting.

- [Print Bus Flyer](#) (PDF)

Metro Transit: (608) 266-4466; E-mail: mymetrobus@cityofmadison.com

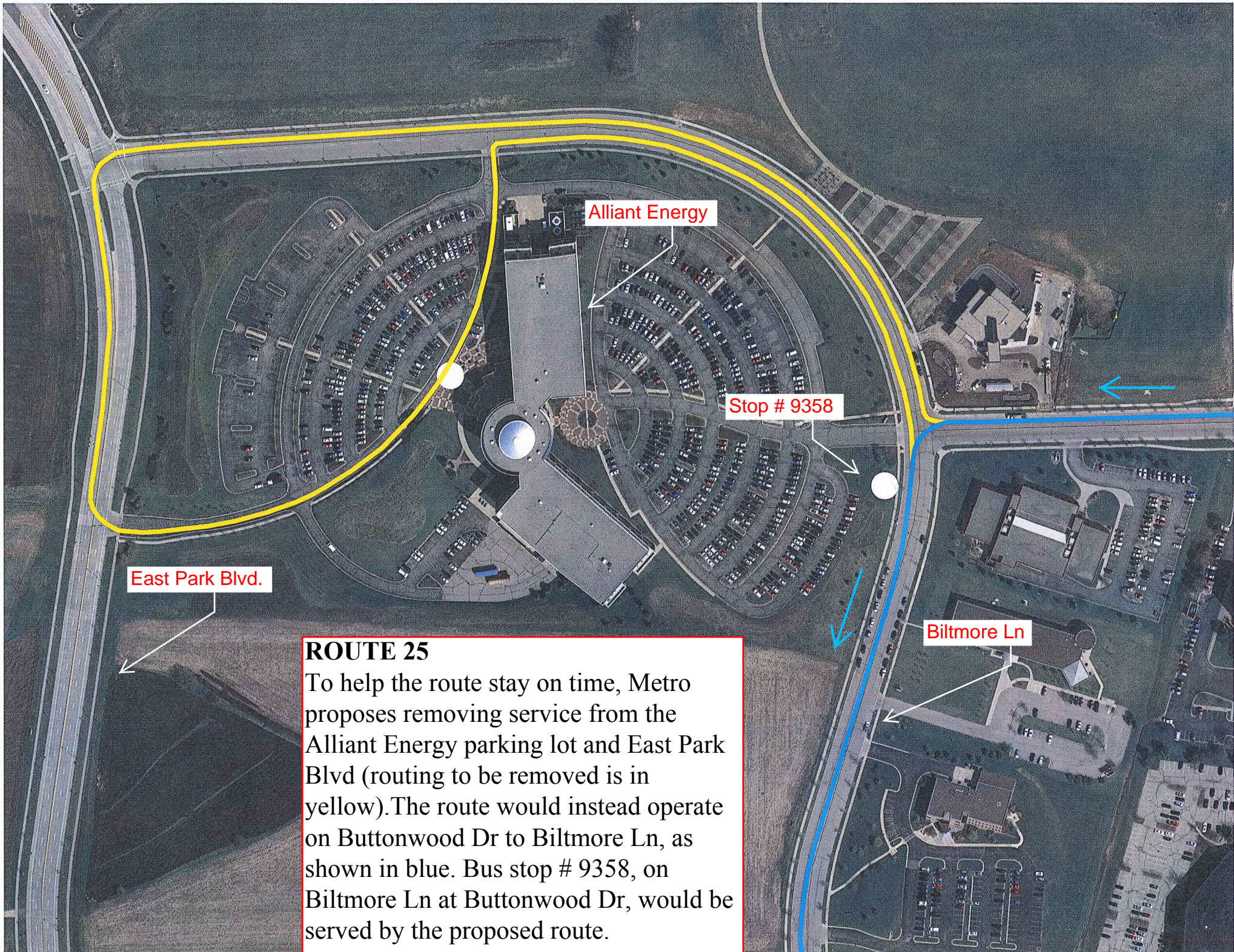


Broadway

Bridge Rd

WPS

ROUTE 11--p.m.
To help afternoon trips stay on schedule more consistently, Metro proposes removing service from the WPS campus (routing to be removed is in yellow). Instead, the route would operate on westbound Broadway (as shown in blue). All regular bus stops along Broadway would be served.



ROUTE 25

To help the route stay on time, Metro proposes removing service from the Alliant Energy parking lot and East Park Blvd (routing to be removed is in yellow). The route would instead operate on Buttonwood Dr to Biltmore Ln, as shown in blue. Bus stop # 9358, on Biltmore Ln at Buttonwood Dr, would be served by the proposed route.