

# The Edgewater

666 Wisconsin Avenue  
Madison, WI 53703

Owner:  
**Landmark X, LLC**  
22 East Mifflin Street, Suite 800  
Madison, WI 53703

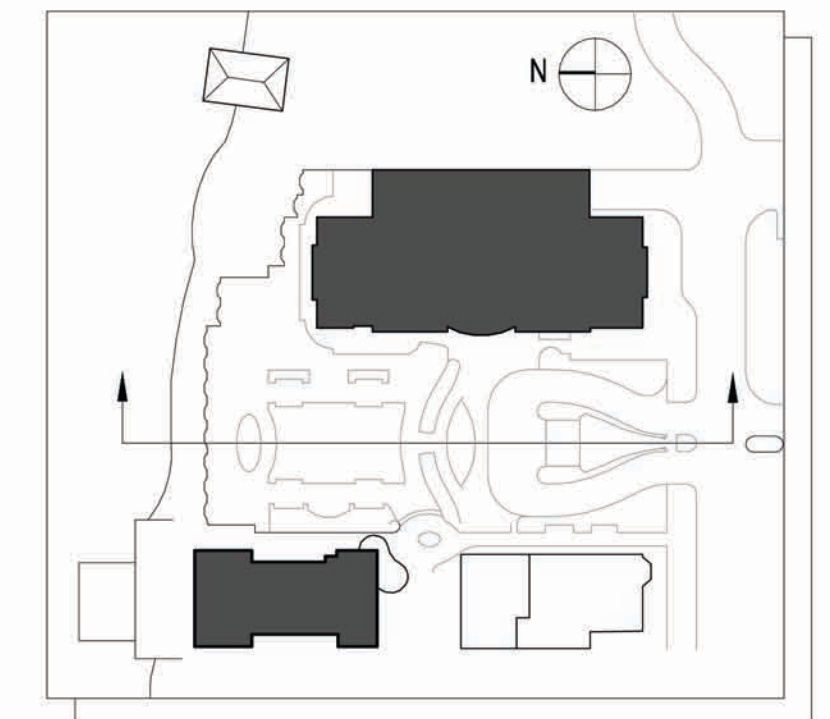
Developer:  
**Hammes Company**  
22 East Mifflin Street, Suite 800  
Madison, WI 53703

Civil Engineer:  
**BT<sup>2</sup>, Inc.**  
2830 Dairy Drive  
Madison, WI 53718

Landscape Architect:  
**Ken Saiki Design, Inc.**  
303 S. Patterson, Suite One  
Madison, WI 53703



**2 Illustrative Building Base Elevation**  
SCALE: 1"=20'-0"



Plan Diagram

PROJECT NUMBER: 08105.00

DATE: January 27, 2010

REVISIONS:

SCALE: 1"= 20'-0"

DRAWING NAME:

**Base Elevation  
and Perspective**

DRAWING NUMBER:

# A2.05