



Office of the Common Council Alder Grant Foster, District 15

City-County Building, Room 417
210 Martin Luther King, Jr. Boulevard
Madison, Wisconsin 53703-3345
Phone (608) 266-4071
Fax (608) 267-8669
district15@cityofmadison.com
www.cityofmadison.com/council/district15

14 September, 2021

To: Ad Hoc Redistricting Committee Members
CC: Redistricting Staff
From: Alder Foster, District 15
Re: Eastside Alder District Analysis

Members of the Ad Hoc Redistricting Committee:

In anticipation of your detailed review of potential eastside alder district configurations at your Wednesday meeting, I wanted to share some of the thinking that lies under the redistricting map (Fig. 1) that I sent to you last week.

As an alder that has represented a district that includes portions of a number of fragmented communities of interest, I have had a keen interest in helping work towards future district boundaries that minimize the number of communities of interest that are impacted in this way in the future, and with a special eye towards communities that already struggle with equitable representation in the city.

I hope that you've all had an opportunity to look closely at the race/ethnicity dot density map that was provided by city staff. This visualization gives the best bird's eye view of where communities of interest exist in the city. These communities of interest are often separated by busier roads or natural features like rivers or wetlands and by large 'residential deserts' where no one lives due to commercial/industrial land uses.

I roughly outlined in my copy of this map the different communities of interest as I understand them (Fig. 2). These boundaries often coincide with neighborhood association boundaries, but sometimes identify smaller COIs within a larger neighborhood. Sometimes adjacent neighborhoods are very similar to each other in terms of demographics and shared interests (Eastmorland, Lake Edge, Glendale) and other times represent big differences in spite of the geographic closeness (Burke Heights & Ridgewood). Worth highlighting in this big picture view are the vast areas with no residential use across the north/east side of Madison. The airport, railyard, and East Towne mall areas are several such 'people deserts' as well as the corridors adjacent to and including limited access highways of 30, 90/94, 51 and 18. These areas represent natural splits between communities of interest and offer the best locations for natural dividing lines between communities.

With the current alder district boundaries, District 15 includes four broken/split communities of interest including: Glendale (D16), Hiestand Park (D3), Ridgewood (D17), and Carpenter-Ridgeway (D12). While some splitting of COIs is inevitable in order to achieve the other goals of redistricting, I believe that we have an opportunity to reduce the number of these divisions, and particularly for those communities/neighborhoods that already suffer from poorer representation and access to local government. In cases where we do need to split a COI, we should choose COIs that represent people with greater access and privilege vs those that are already struggling to have a voice.

Of particular interest for me is the COI represented by the Hawthorne, Carpenter-Ridgeway, Truax and Sycamore Park neighborhoods, as well as the nearby unnamed COI in the Orin/Onsgaard area (Fig. 3). While technically represented by multiple neighborhood associations, this area also forms one coherent COI that is relatively isolated from the rest of the city. It was identified by Planning Division staff for the [Carpenter-Ridgeway-Hawthorne-Truax Neighborhood Plan](#) in 2001 and is expected to be the focus of a renewed planning effort in 2022. This area is centered around the 3100-3700 blocks of E. Washington commercial district and anchored by Hawthorne Elementary school.

In the plan that I submitted last week (Fig. 4), the entirety of this COI was able to be maintained within one alder district (D12) with the exception of the Sycamore Park neighborhood. This neighborhood instead would be included in District 3 along with the similarly situated, small neighborhood to the east of Burke Heights.

Other mending of COIs in the plan that I submitted, includes reuniting the Glendale neighborhood (D15), the Hiestand Park neighborhood (D3), and the Ridgewood neighborhood (D17). The only new split of a COI in exchange for this is that of the SASY neighborhood (D15 & D6). Given what we know of representation in city government, I believe this shift will produce the most equitable results with the best representation.

There are a number of other elements that were considered in the plan that I submitted and I'd be happy to share additional details during the discussion on Wednesday, but I wanted to take the time to share this information out via memo today in order to respect the limited time the committee has to deliberate on the alternatives prior to recommending an alternative for community input.

Thanks again for all your work on this and I look forward to the discussion tomorrow.

Sincerely,

Alder Grant Foster
District 15

Enclosed:

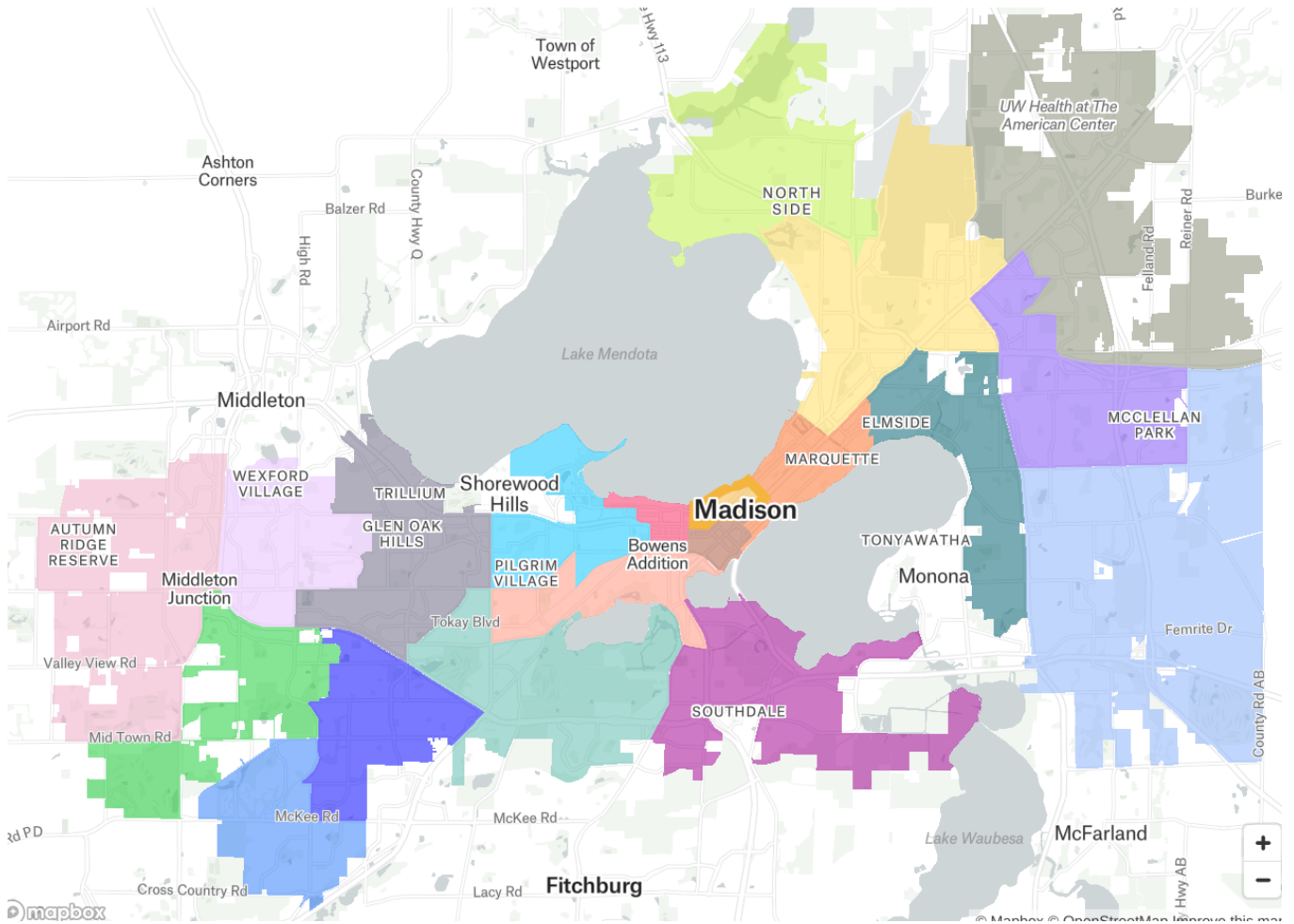
Proposed Foster Redistricting Plan (Fig. 1)

Foster COIs (Fig. 2)

Carpenter-Ridgeway-Hawthorne-Truax Neighborhood Plan Area Map (Fig. 3)

Foster COIs w/Foster Redistricting Plan Overlay (Fig. 4)

Fig. 1



Access an interactive version of this map online at:

<https://app.districtbuilder.org/projects/57865049-47a3-4228-b7da-556786dc6d45>

Fig. 2

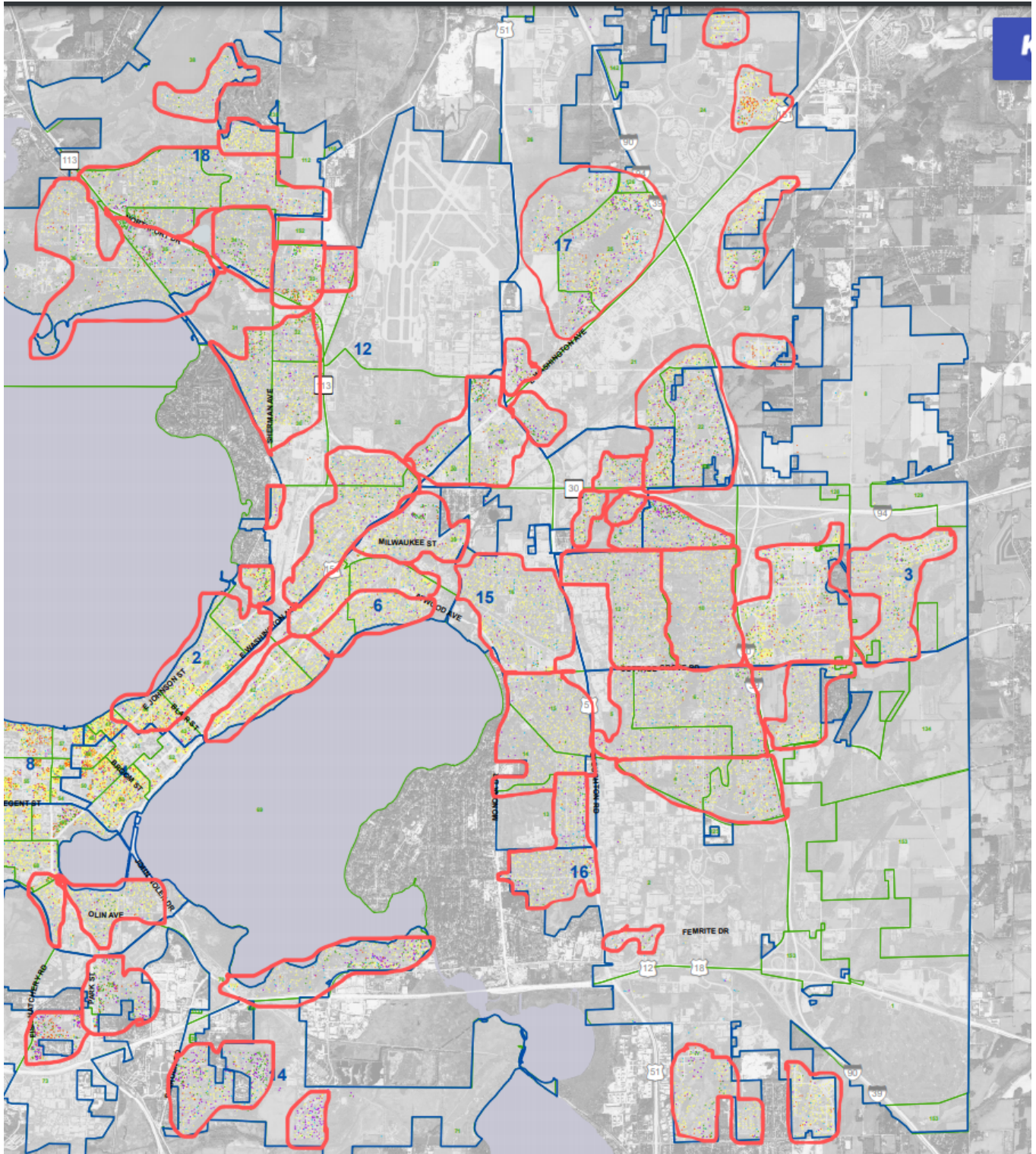
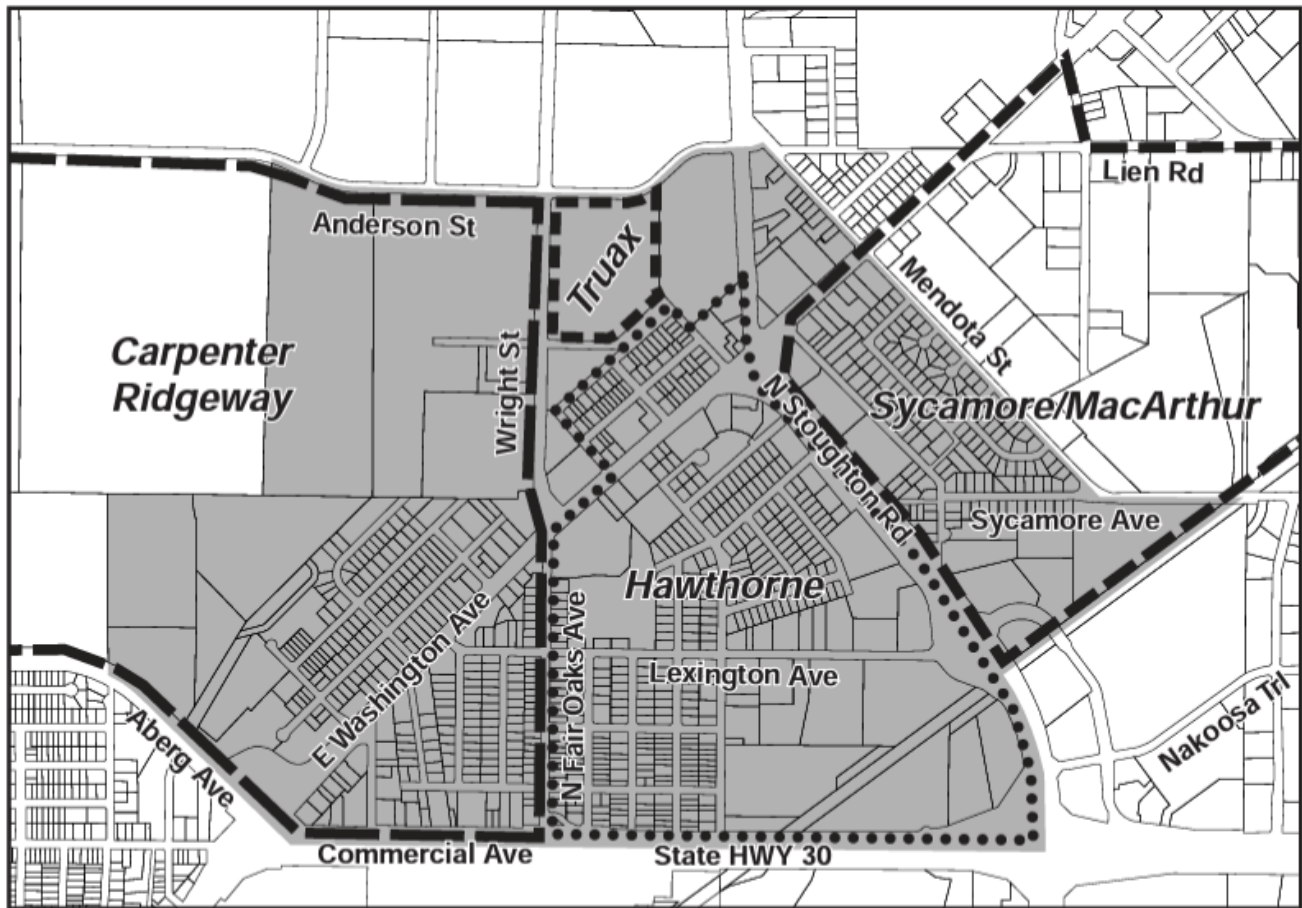


Fig. 3

Neighborhood Planning Study Boundaries



Map 1 - Planning Area Boundaries

Fig. 4

